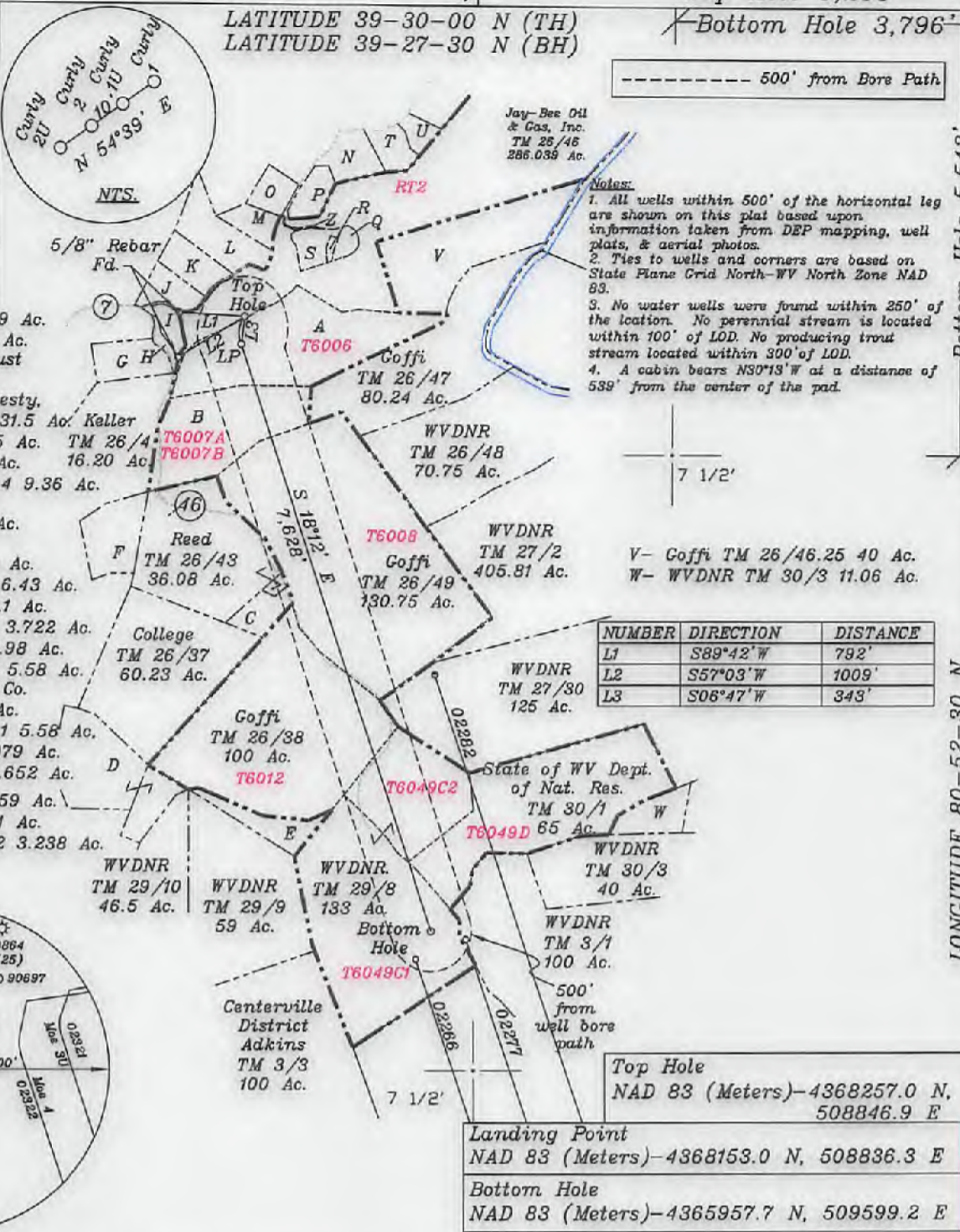
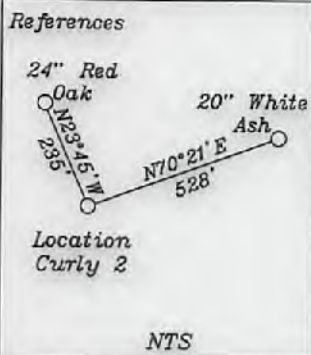
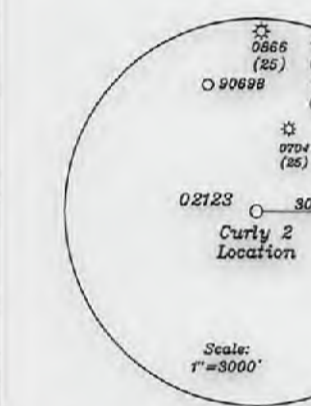


Top Hole 6,253'
Bottom Hole 3,796'



- A- Coffi TM 26-45 52.9 Ac.
- B- Coffi TM 26/44 39 Ac.
- C- Coffi Irrevocable Trust TM 26/39 8.17 Ac.
- D- Stevens, Reed, Hardesty, & Holmes TM 29/6 31.5 Ac. Keller
- E- WVDNR TM 29/7 7.5 Ac. TM 26/4
- F- Reed TM 26/42 13 Ac. 16.20 Ac
- G- Westbrook TM 26/19.4 9.36 Ac.
- H- Jay Bee Oil & Gas TM 26/19.9 8.693 Ac.
- I- Jay Bee Oil & Gas TM 26/46.24 3.059 Ac.
- J- Walton TM 26/46.11 6.43 Ac.
- K- Kanz TM 26/46.4 8.1 Ac.
- L- Patera TM 26/46.15 3.722 Ac.
- M- Ison TM 26/46.10 4.98 Ac.
- N- Shrader TM 26/46.7 5.58 Ac.
- O- Jay-Bee Production Co. TM 26/46.16 5.09 Ac.
- P- Shrader TM 26/46.1 5.56 Ac.
- Q- Peek TM 26/46.8 2.079 Ac.
- R- Peek TM 26/46.20 0.652 Ac.
- S- Peek TM 26/46.19 4.59 Ac.
- T- Kanz TM 26/46.3 5.4 Ac.
- U- Holliday TM 26/46.12 3.238 Ac.



(+) DENOTES LOCATION OF WELL ON UNITED STATES TOPOGRAPHIC MAPS

FILE NO. _____
DRAWING NO. 1
SCALE 1" = 2000'
MINIMUM DEGREE OF ACCURACY 1 in 200
PROVEN SOURCE OF ELEVATION GPS
submeter unit

I THE UNDERSIGNED, HEREBY CERTIFY THAT THIS PLAT IS CORRECT TO THE BEST OF MY KNOWLEDGE AND BELIEF AND SHOWS ALL THE INFORMATION REQUIRED BY LAW AND THE RULES ISSUED AND PRESCRIBED BY THE DEPARTMENT OF ENVIRONMENTAL PROTECTION.

(SIGNED) David L. Jackson
R.P.E. _____ P.S. 708



STATE OF WEST VIRGINIA
Division of Environmental Protection
OFFICE OF OIL AND GAS

DATE March 17, 2017
OPERATOR'S WELL NO. Curly 2
API WELL NO. _____

WELL TYPE: OIL GAS LIQUID INJECTION X WASTE DISPOSAL _____
(IF 'GAS') PRODUCTION X STORAGE DEEP SHALLOW X

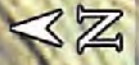
LOCATION: ELEVATION 1,123.38' WATER SHED Middle Island Creek
DISTRICT Ellsworth COUNTY Tyler
QUADRANGLE Middlebourne 7 1/2'

SURFACE OWNER Jay-Bee Oil & Gas Inc. ACREAGE 286.039 Ac.
OIL & GAS ROYALTY OWNER Ridgetop Capital LP, & Ridgetop Capital II, LP PLEASE ACREAGE 286.039 Ac.
LEASE NO. RT2 02/09/2018

PROPOSED WORK: DRILL X CONVERT _____ REDRILL _____ FRACTURE OR STIMULATE X PLUG OFF OLD FORMATION _____ PERFORATE NEW FORMATION X OTHER PHYSICAL CHANGE IN WELL (SPECIFY) _____

PLUG AND ABANDON _____ CLEAN OUT AND REPLUG _____
TARGET FORMATION Marcellus ESTIMATED DEPTH 6,425.5'-TVD 14,896.5'-TMD
WELL OPERATOR Jay-Bee Oil & Gas, Inc. DESIGNATED AGENT Randy Broda
ADDRESS 1720 Route 22 E, Union, NJ 07083 ADDRESS 3570 Shields Hill Rd., Cairo, WV 26337

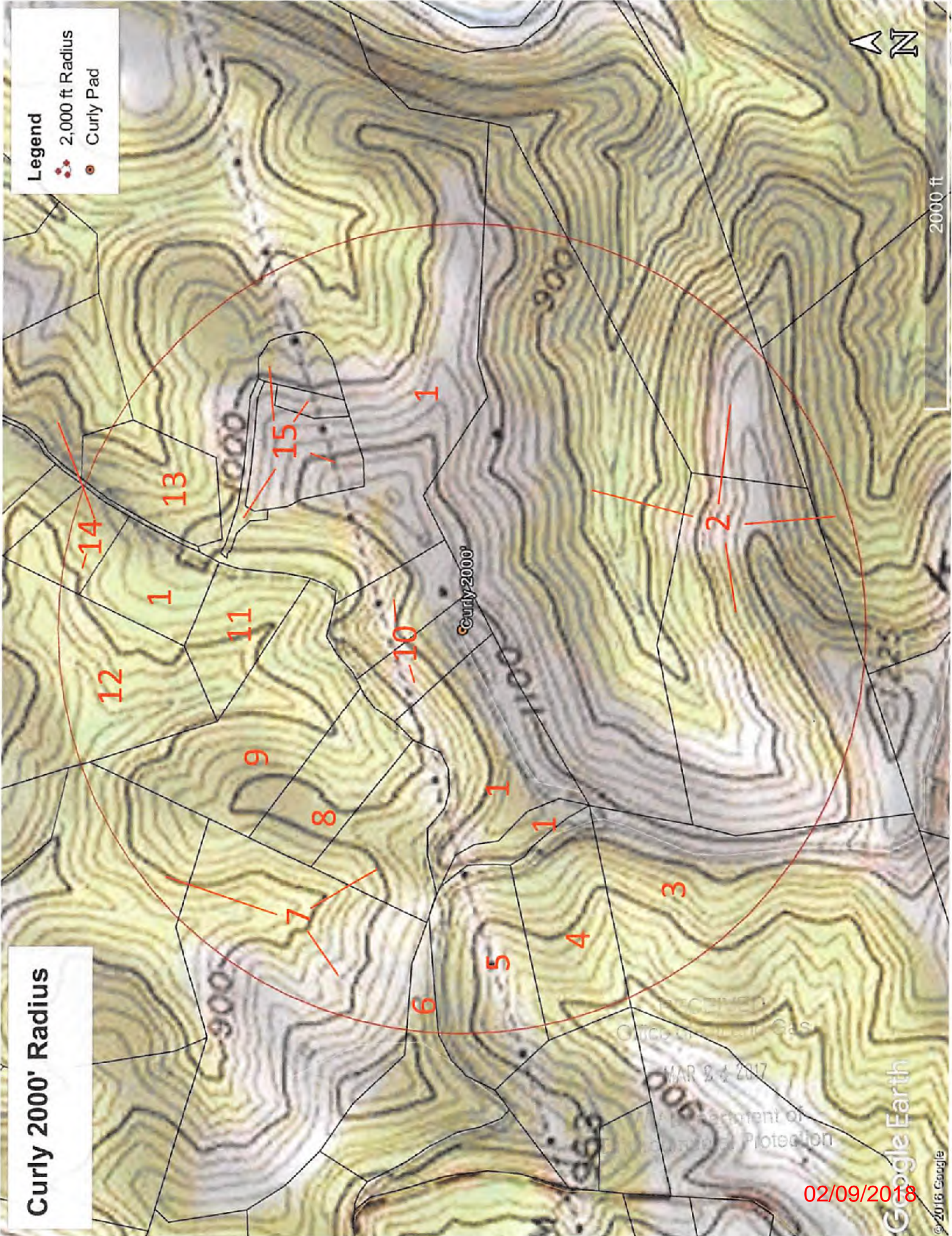
Top Hole 5,542'
Bottom Hole 13,170'
LONGITUDE 80-52-30 N



Legend

- 2,000 ft Radius
- Curly Pad

Curly 2000' Radius



02/09/2018