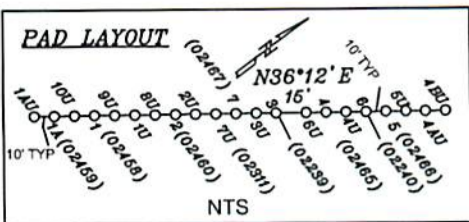


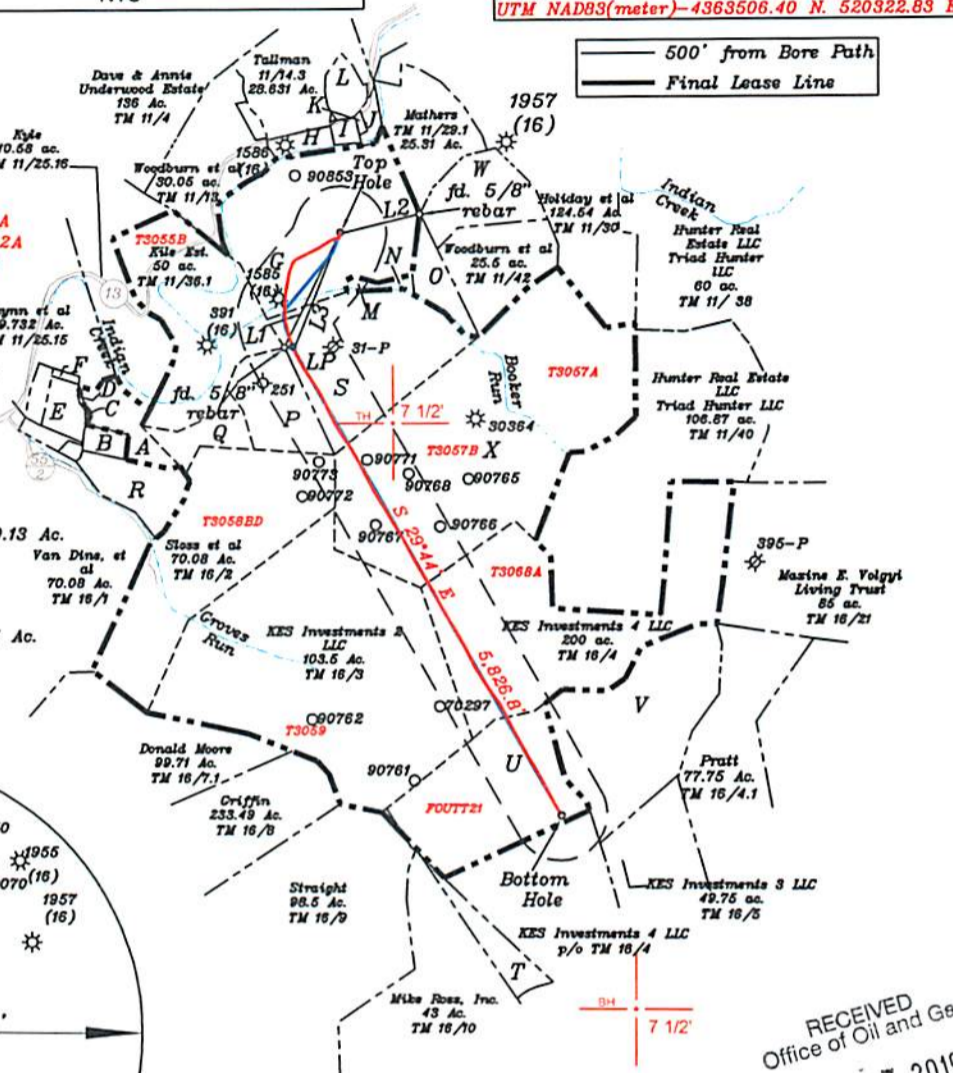
References



Top Hole	UTM NAD83(meter)-4365409.40 N. 519568.98 E
Landing Point	UTM NAD83(meter)-4364983.34 N. 519443.79 E
Bottom Hole	UTM NAD83(meter)-4363509.76 N. 520319.30 E
Top Hole	UTM NAD83(meter)-4365409.33 N. 519568.85 E
Landing Point	UTM NAD83(meter)-4365033.28 N. 519416.91 E
Bottom Hole	UTM NAD83(meter)-4363506.40 N. 520322.83 E

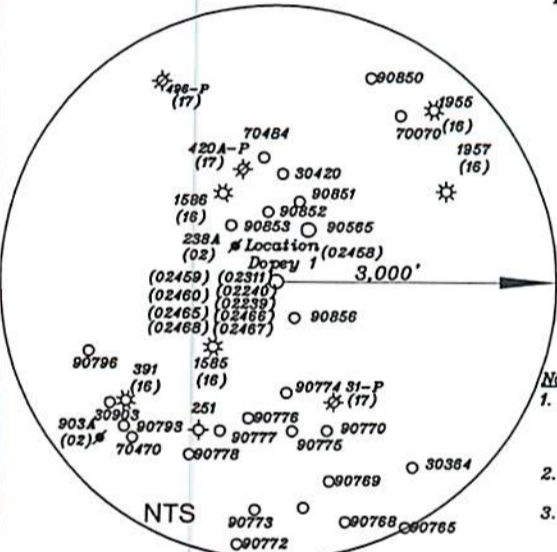
500' from Bore Path
Final Lease Line

- A- L. Davis TM 11/25.15 12.28 Ac.
- B- T. Davis TM 11/25.7 3.032 Ac.
- C- Cramer TM 11/25.16 0.14 Ac.
- D- L. Davis TM 11/25.15 12.28 Ac.
- E- Cramer TM 11/25.10 2.44 Ac.
- F- Cramer TM 11/25.14 0.54 Ac.
- G- Montgomery TM 11/27 65 Ac. T3055A
- H- Montgomery TM 11/14 2.18 Ac. T3052A
- I- Vincent TM 11/14.4 1.82 Ac. T3052A
- J- Riter (Life) TM 11 /29 1.63 Ac.
- K- Stillman TM 11 /28 0.37 Ac.
- L- Tallman TM 11 /14.5 5.135 Ac. T3052A
- M- Woodburn et al TM 11/45 0.755 Ac.
- N- Woodburn et al TM 11/44 1.5 Ac.
- O- Woodburn et al TM 11/44 6.75 Ac.
- P- Davis TM 11/41 18.82 Ac.
- Q- Davis TM 11/25.18 10 Ac.
- R- Yeater TM 11/25.12 13.75 Ac.
- S- Kile estate TM 11/36 57 Ac.
- T- Straight TM 16/11 12 Ac.
- U- KES Investments 3 LLC TM 16/4 49.13 Ac.
- V- KES Investments 3 LLL TM 16/4 Residue of 78.4 Ac.
- W- Woodburn et al TM 11/43 35 Ac.
- X- Hunter Real Estate LLC Triad Hunter LLC TM 11/37 147 Ac.



NORTH

Bottom Hole 13,655'
Top Hole 7,342'
LONGITUDE 80-45-00 W



Notes:

1. All wells within 500' of the horizontal leg are shown on this plat based upon information taken from DEP mapping, well plats, & aerial photos.
2. Ties to wells and corners are based on State Plane Grid North-WV North Zone NAD 83.
3. No water wells were found within 250' of the well location. A house was found N55°54'W 614.3' from the center of the well pad.

RECEIVED
Office of Oil and Gas
MAY 7 2019
WV Department of Environmental Protection
AS-DRILLED LEC
PROPOSED LEC

NUMBER	DIRECTION	DISTANCE
L1	S 26°15' W	1,376.1'
L2	N 57°58' E	437.1'
L3	S 22°57' W	1,331.1'

(+) DENOTES LOCATION OF WELL ON UNITED STATES TOPOGRAPHIC MAPS

FILE NO. _____
DRAWING NO. 1
SCALE 1" = 2000'
MINIMUM DEGREE OF ACCURACY 1 in 200
PROVEN SOURCE OF ELEVATION GPS
submeter unit

I THE UNDERSIGNED, HEREBY CERTIFY THAT THIS PLAT IS CORRECT TO THE BEST OF MY KNOWLEDGE AND BELIEF AND SHOWS ALL THE INFORMATION REQUIRED BY LAW AND THE RULES ISSUED AND PRESCRIBED BY THE DEPARTMENT OF ENVIRONMENTAL PROTECTION.

(SIGNED) David L Jackson
R.P.E. _____ P.S. 708



STATE OF WEST VIRGINIA
Division of Environmental Protection
OFFICE OF OIL AND GAS

DATE February 12, 2019
OPERATOR'S WELL NO. Dopey 1
API WELL NO. 47 - 095 - 02458

WELL TYPE: OIL ___ GAS X LIQUID INJECTION ___ WASTE DISPOSAL ___ STATE COUNTY PERMIT
(IF "GAS") PRODUCTION X STORAGE ___ DEEP ___ SHALLOW X

LOCATION: ELEVATION 910.3' WATER SHED Indian Creek - Outlet Middle Island Creek (HUC-10)
DISTRICT McElroy COUNTY Tyler
QUADRANGLE Shirley 7 1/2'

SURFACE OWNER John & Patty Montgomery ACREAGE 65 ac.
OIL & GAS ROYALTY OWNER & LEASE NO. See Above for Lease Numbers

PROPOSED WORK: DRILL ___ CONVERT ___ DRILL DEEPER ___ REDRILL ___ FRACTURE OR STIMULATE ___ PLUG OFF OLD FORMATION ___ PERFORATE NEW FORMATION ___ OTHER PHYSICAL CHANGE IN WELL (SPECIFY) ASDRILLED

PLUG AND ABANDON ___ CLEAN OUT AND REPLUG ___
TARGET FORMATION Marcellus ESTIMATED DEPTH TVD = 6,659.2'; TMD = 13,261'
WELL OPERATOR Jay Bee Oil & Gas, Inc. DESIGNATED AGENT Randy Broda
ADDRESS 1720 Rt. 22, East Union, NJ 07083 ADDRESS 3570 Shields Hill Road, Cairo, WV 26337