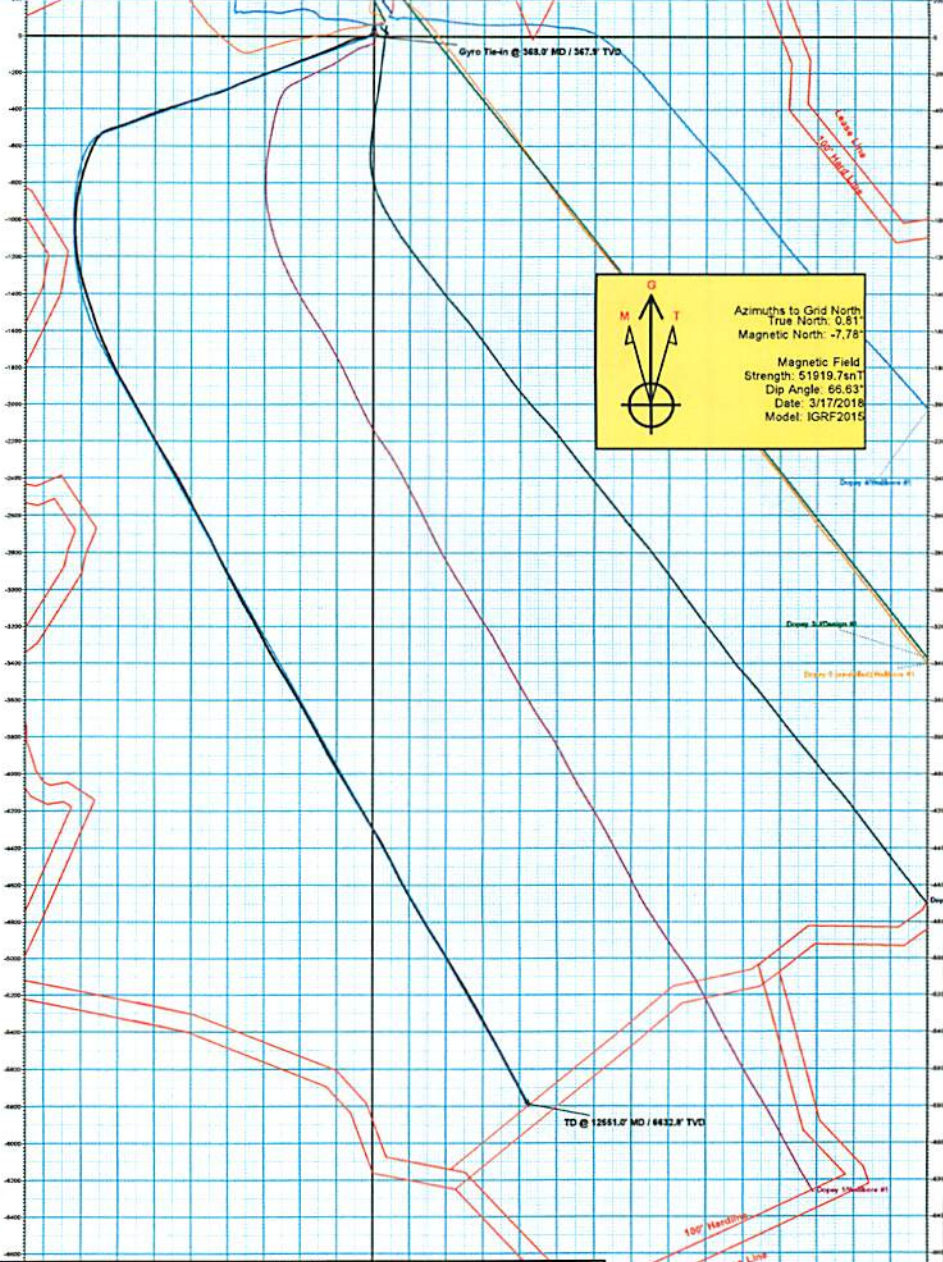


Company Name: Jay-Bee Oil & Gas
 Dopey 1A
 Tyler County
 Rig: Nomac #31
 Created By: Will Jircik
 Date: 3/30/2018

Dopey 1A
 Tyler County
 Q180346 & AM-180303
 Design #4

PROJECT DETAILS: Tyler County
 Geodetic System: US State Plane 1983
 Datum: North American Datum 1983
 Ellipsoid: GRS 1980
 Zone: West Virginia Northern Zone
 System Datum: Mean Sea Level

WELL DETAILS: Dopey 1A
 +N-S: 0.0
 +E-W: 0.0
 Northing: 844177.73
 Easting: 163078.44
 Ground Level: 813.7
 Elevation: 163078.44
 Latitude: 39° 25' 13.858" N
 Longitude: 80° 40' 21.519" W



MD	Inc	Azi	TVD	+N-S	+E-W	VSec	Departure	Annotation
368.0	0.76	170.93	347.3	-0.5	4.6	1.2	6.0	Gyro Tie-in @ 368.0' MD / 347.3' TVD
12561.0	90.50	163.00	6632.8	-786.6	842.2	5847.5	7529.3	TD @ 12561.0' MD / 6632.8' TVD

Sec	MD	Inc	Azi	TVD	+N-S	+E-W	Diag	TFace	VFace	Annotation
1	368.0	0.76	170.93	347.3	-0.5	4.6	0.00	0.00	1.2	Gyro Tie-in
2	400.0	0.76	170.93	399.9	-0.9	4.6	0.00	0.00	1.6	Build 4" / 100'
3	528.4	6.00	270.00	528.1	-1.8	-0.9	4.00	167.39	1.6	EOB @ 6.00' Inc. / 270.00' Azm
4	728.4	6.00	270.00	727.4	-1.9	-18.2	0.00	0.00	-0.9	Drop 4" / 100'
5	883.4	0.00	0.00	882.2	-1.8	-23.7	4.00	180.00	-1.7	EOB @ Vertical
6	1700.0	0.00	0.00	1698.9	-1.9	-23.7	0.00	0.00	-1.7	Build 4" / 100'
7	2212.6	20.80	250.00	2200.5	-32.9	-108.9	4.00	250.00	14.6	EOB @ 20.80' Inc. / 250.00' Azm
8	6426.4	20.80	250.00	6148.4	-537.4	-1495.3	0.00	0.00	314.5	Build 10" / 100'
9	7264.6	90.60	177.30	6630.0	-1114.8	-1640.8	10.00	-73.74	864.5	EOB @ 90.00' Inc. / 177.30' Azm / Turn 4"
10	7942.3	90.60	160.23	6630.0	-1788.4	-1453.4	4.00	-90.00	1520.6	EOB @ 160.23' Azm
11	12561.0	90.50	163.00	6630.0	-786.6	842.2	0.00	0.00	5847.2	TD @ 12561.0' MD / 6630.0' TVD

Name	TVD	+N-S	+E-W	Northing	Easting	Latitude	Longitude
PEHC - Dopey 1A - Dea	6630.0	-786.6	842.2	328332.33	163078.04	39° 25' 13.810" N	80° 40' 5.538" W

RECEIVED
 Office of Oil and Gas

MAY 7 2019

WV Department of
 Environmental Protection



Jay-Bee Oil & Gas

Tyler County

Dopey Pad

Dopey 1A

Wellbore #1

Design: Wellbore #1

QES Survey Certification Report

30 March, 2018

RECEIVED
Office of Oil and Gas

MAY 7 2019



WV Department of
Environmental Protection

Quintana Energy Services

11390 FM 830
Willis, TX 77318
Phone: (936) 856-4332
Fax: (936) 856-8678



Survey Certification Sheet

Company	Job Number	Date
Jay- Bee Oil& Gas	AM-180303	4/24/2018

Lease	Well Name	County & State
N/A	Dopey 1A	Tyler County, WV

API No.	Survey Depth Range	Survey Type
47-095-02459	368 feet to 12551 feet MD	MWD

Sidetrack Information	Directional Supervisor/Surveyor
Click here to enter text.	Adam Ball

Certification Statement

The data and calculations for this survey have been checked by me and conform to the standards and procedures set forth by Quintana Energy Services (QES). This report represents a true and correct directional survey of this well based on the original data obtained at the well site. Wellbore coordinates are calculated using minimum curvature.

Christopher Hughes

Digitally signed by Christopher Hughes
DN: cn=Christopher Hughes, o=QES,
ou=compliance, email=chrish@qeslp.com, c=US
Date: 2018.05.02 15:09:57 -05'00'

Christopher Hughes
MWD Compliance Manager
Quintana Energy Services

RECEIVED
Office of Oil and Gas

MAY 7 2019

WV Department of
Environmental Protection



QES Survey Certification Report



Company:	Jay-Bee Oil & Gas	Local Co-ordinate Reference:	Well Dopey 1A
Project:	Tyler County	TVD Reference:	well @ 931.3usft (Nomac #81)
Site:	Dopey Pad	MD Reference:	well @ 931.3usft (Nomac #81)
Well:	Dopey 1A	North Reference:	Grid
Wellbore:	Wellbore #1	Survey Calculation Method:	Minimum Curvature
Design:	Wellbore #1	Database:	EDM 5000.1 Single User Db

Project	Tyler County		
Map System:	US State Plane 1983	System Datum:	Mean Sea Level
Geo Datum:	North American Datum 1983		
Map Zone:	West Virginia Northern Zone		

Site	Dopey Pad				
Site Position:		Northing:	344,194.77 usft	Latitude:	39° 26' 16.836 N
From:	Lat/Long	Easting:	1,609,090.36 usft	Longitude:	80° 46' 21.360 W
Position Uncertainty:	0.0 usft	Slot Radius:	13-3/16"	Grid Convergence:	-0.81 °

Well	Dopey 1A					
Well Position	+N/-S	0.0 usft	Northing:	344,177.72 usft	Latitude:	39° 26' 16.666 N
	+E/-W	0.0 usft	Easting:	1,609,078.44 usft	Longitude:	80° 46' 21.509 W
Position Uncertainty		0.0 usft	Wellhead Elevation:	0.0 usft	Ground Level:	910.7 usft

Wellbore	Wellbore #1				
Magnetics	Model Name	Sample Date	Declination (°)	Dip Angle (°)	Field Strength (nT)
	IGRF2015	3/17/2018	-8.60	66.63	51,919.69470021

Design	Wellbore #1				
Audit Notes:					
Version:	1.0	Phase:	ACTUAL	Tie On Depth:	0.0
Vertical Section:		Depth From (TVD) (usft)	+N/-S (usft)	+E/-W (usft)	Direction (°)
		0.0	0.0	0.0	171.65

Survey Program	Date	3/30/2018			
From (usft)	To (usft)	Survey (Wellbore)	Tool Name	Description	
50.0	368.0	Gyro (Wellbore #1)	GYRO-NS	OWSG Gyrocompass Gyro	
424.0	12,551.0	QES MWD Surveys (Wellbore #1)	OWSG MWD - Standard	OWSG MWD - Standard	

RECEIVED
Office of Oil and Gas
MAY 7 2019
WV Department of
Environmental Protection

Survey	MD (usft)	Inc (°)	Azi (azimuth) (°)	TVD (usft)	N/S (usft)	E/W (usft)	Closure Distance (usft)	Closure Azimuth (°)
	368.0	0.76	170.93	367.9	-0.5	4.6	4.6	96.55
	Gyro Tie-in @ 368.0' MD / 367.9' TVD							
	424.0	1.09	271.12	423.9	-0.9	4.1	4.2	102.13
	519.0	3.27	285.57	518.9	-0.1	0.6	0.6	103.11
	614.0	4.84	288.01	613.6	1.8	-5.8	6.1	287.41
	709.0	5.29	288.16	708.3	4.4	-13.8	14.5	287.80
	804.0	2.62	248.94	803.0	5.0	-20.0	20.6	284.09
	899.0	1.96	192.08	898.0	2.6	-22.4	22.5	276.76
	993.0	1.01	147.94	991.9	0.4	-22.3	22.3	270.97
	1,088.0	0.64	19.27	1,086.9	0.2	-21.6	21.6	270.44
	1,183.0	0.88	354.26	1,181.9	1.4	-21.5	21.6	273.70



QES Survey Certification Report



Company:	Jay-Bee Oil & Gas	Local Co-ordinate Reference:	Well Dopey 1A
Project:	Tyler County	TVD Reference:	well @ 931.3usft (Nomac #81)
Site:	Dopey Pad	MD Reference:	well @ 931.3usft (Nomac #81)
Well:	Dopey 1A	North Reference:	Grid
Wellbore:	Wellbore #1	Survey Calculation Method:	Minimum Curvature
Design:	Wellbore #1	Database:	EDM 5000.1 Single User Db

Survey	MD (usft)	Inc (°)	Azi (azimuth) (°)	TVD (usft)	N/S (usft)	E/W (usft)	Closure Distance (usft)	Closure Azimuth (°)
	1,277.0	0.34	57.80	1,275.9	2.3	-21.4	21.5	276.04
	1,372.0	0.51	194.57	1,370.9	2.0	-21.2	21.3	275.38
	1,467.0	0.76	188.73	1,465.9	1.0	-21.4	21.5	272.59
	1,561.0	0.72	210.63	1,559.9	-0.2	-21.8	21.8	269.59
	1,656.0	1.05	247.52	1,654.9	-1.0	-22.9	23.0	267.50
	1,750.0	4.73	262.86	1,748.8	-1.8	-27.6	27.7	266.24
	1,845.0	8.69	262.73	1,843.1	-3.2	-38.6	38.7	265.25
	1,940.0	12.39	261.31	1,936.5	-5.7	-55.8	56.1	264.21
	2,035.0	14.93	258.97	2,028.8	-9.5	-77.9	78.5	263.02
	2,126.0	16.23	259.94	2,116.4	-14.0	-101.9	102.9	262.18
	2,220.0	19.36	247.44	2,206.0	-22.3	-129.3	131.2	260.22
	2,315.0	20.06	245.24	2,295.4	-35.1	-158.6	162.4	257.50
	2,409.0	19.72	244.87	2,383.8	-48.6	-187.6	193.8	255.47
	2,504.0	20.44	246.66	2,473.0	-62.0	-217.3	226.0	254.08
	2,602.0	19.85	248.76	2,565.0	-74.8	-248.6	259.6	253.25
	2,696.0	19.65	247.68	2,653.5	-86.6	-278.1	291.2	252.70
	2,791.0	20.54	249.78	2,742.7	-98.4	-308.5	323.8	252.30
	2,885.0	20.40	247.20	2,830.8	-110.5	-339.0	356.6	251.95
	2,980.0	20.71	249.04	2,919.7	-122.9	-370.0	389.9	251.62
	3,074.0	21.12	250.35	3,007.5	-134.5	-401.5	423.4	251.47
	3,169.0	20.04	247.36	3,096.5	-146.6	-432.6	456.8	251.28
	3,263.0	20.29	248.91	3,184.7	-158.6	-462.7	489.1	251.08
	3,358.0	20.99	247.22	3,273.6	-171.1	-493.7	522.6	250.88
	3,453.0	19.64	252.77	3,362.7	-182.5	-524.7	555.5	250.82
	3,548.0	19.19	250.64	3,452.3	-192.4	-554.7	587.1	250.87
	3,643.0	19.10	250.51	3,542.1	-202.7	-584.0	618.2	250.86
	3,737.0	19.27	251.10	3,630.8	-212.9	-613.2	649.1	250.85
	3,835.0	19.32	249.39	3,723.3	-223.8	-643.7	681.5	250.83
	3,930.0	18.53	247.89	3,813.2	-235.0	-672.4	712.3	250.73
	4,024.0	19.50	249.12	3,902.1	-246.3	-700.9	742.9	250.64
	4,119.0	20.09	247.03	3,991.4	-258.3	-730.7	775.0	250.53
	4,214.0	19.21	246.68	4,080.9	-270.8	-760.1	806.9	250.39
	4,309.0	19.90	247.69	4,170.4	-283.2	-789.4	838.7	250.27
	4,403.0	20.06	249.43	4,258.8	-294.9	-819.3	870.8	250.20
	4,498.0	20.21	249.17	4,348.0	-306.5	-849.9	903.5	250.17
	4,593.0	20.64	255.10	4,437.0	-316.6	-881.4	936.5	250.24
	4,688.0	22.14	252.86	4,525.5	-326.2	-914.7	971.1	250.37
	4,783.0	20.65	249.05	4,613.9	-337.4	-947.5	1,005.7	250.40
	4,877.0	21.46	253.50	4,701.6	-348.3	-979.4	1,039.5	250.43
	4,972.0	21.81	252.45	4,790.0	-358.5	-1,012.9	1,074.5	250.51
	5,066.0	19.98	249.21	4,877.8	-369.5	-1,044.6	1,108.0	250.52
	5,161.0	20.82	253.16	4,966.8	-380.1	-1,075.9	1,141.1	250.54
	5,256.0	21.05	254.87	5,055.5	-389.5	-1,108.5	1,175.0	250.64
	5,350.0	20.92	252.31	5,143.3	-399.0	-1,140.8	1,208.6	250.72

RECEIVED
Office of Oil and Gas

MAY 7 2019



QES Survey Certification Report



Company:	Jay-Bee Oil & Gas	Local Co-ordinate Reference:	Well Dopey 1A
Project:	Tyler County	TVD Reference:	well @ 931.3usft (Nomac #81)
Site:	Dopey Pad	MD Reference:	well @ 931.3usft (Nomac #81)
Well:	Dopey 1A	North Reference:	Grid
Wellbore:	Wellbore #1	Survey Calculation Method:	Minimum Curvature
Design:	Wellbore #1	Database:	EDM 5000.1 Single User Db

Survey	MD (usft)	Inc (°)	Azi (azimuth) (°)	TVD (usft)	N/S (usft)	E/W (usft)	Closure Distance (usft)	Closure Azimuth (°)
	5,445.0	20.55	250.94	5,232.2	-409.6	-1,172.7	1,242.2	250.75
	5,540.0	19.76	249.98	5,321.3	-420.5	-1,203.6	1,274.9	250.74
	5,635.0	19.99	248.76	5,410.7	-431.9	-1,233.8	1,307.2	250.71
	5,730.0	19.94	248.14	5,500.0	-443.8	-1,264.0	1,339.6	250.65
	5,825.0	20.95	247.27	5,589.0	-456.4	-1,294.7	1,372.8	250.58
	5,920.0	20.56	247.53	5,677.8	-469.4	-1,325.8	1,406.4	250.50
	6,014.0	19.82	250.74	5,766.1	-480.9	-1,356.1	1,438.8	250.47
	6,109.0	21.74	253.13	5,854.9	-491.3	-1,388.1	1,472.5	250.51
	6,204.0	21.41	251.95	5,943.2	-501.8	-1,421.4	1,507.4	250.56
	6,293.0	22.30	249.40	6,025.8	-512.8	-1,452.7	1,540.5	250.56
	6,387.0	21.70	238.70	6,113.0	-528.1	-1,484.2	1,575.4	250.41
	6,434.0	23.30	224.10	6,156.5	-539.3	-1,498.1	1,592.3	250.20
	6,482.0	27.80	216.30	6,199.8	-555.1	-1,511.4	1,610.1	249.83
	6,529.0	30.90	209.70	6,240.7	-574.5	-1,523.9	1,628.6	249.34
	6,576.0	35.10	206.00	6,280.2	-597.1	-1,535.8	1,647.8	248.75
	6,623.0	36.80	203.30	6,318.2	-622.2	-1,547.3	1,667.7	248.09
	6,671.0	39.20	201.50	6,356.0	-649.5	-1,558.5	1,688.4	247.38
	6,718.0	40.90	200.20	6,392.0	-677.8	-1,569.3	1,709.4	246.64
	6,766.0	43.60	197.80	6,427.5	-708.3	-1,579.8	1,731.3	245.85
	6,813.0	47.20	196.10	6,460.5	-740.3	-1,589.5	1,753.4	245.03
	6,861.0	51.30	195.10	6,491.9	-775.3	-1,599.3	1,777.3	244.14
	6,908.0	54.20	193.50	6,520.3	-811.6	-1,608.5	1,801.6	243.23
	6,955.0	57.40	190.50	6,546.7	-849.6	-1,616.6	1,826.2	242.28
	7,002.0	60.40	187.90	6,571.0	-889.3	-1,623.0	1,850.6	241.28
	7,050.0	63.30	186.30	6,593.6	-931.3	-1,628.2	1,875.7	240.23
	7,097.0	68.50	183.90	6,612.8	-974.0	-1,632.0	1,900.5	239.17
	7,145.0	72.50	182.80	6,628.9	-1,019.2	-1,634.6	1,926.3	238.06
	7,192.0	78.40	179.70	6,640.7	-1,064.6	-1,635.6	1,951.6	236.94
	7,240.0	85.10	176.20	6,647.5	-1,112.1	-1,633.9	1,976.4	235.76
	7,287.0	91.50	173.60	6,648.9	-1,158.8	-1,629.7	1,999.7	234.58
	7,335.0	91.40	171.90	6,647.7	-1,206.4	-1,623.7	2,022.8	233.39
	7,429.0	90.20	165.20	6,646.4	-1,298.5	-1,605.0	2,064.5	231.03
	7,524.0	89.50	161.00	6,646.7	-1,389.4	-1,577.4	2,102.0	228.63
	7,619.0	89.50	163.00	6,647.5	-1,479.7	-1,548.0	2,141.5	226.29
	7,713.0	92.00	162.00	6,646.3	-1,569.3	-1,519.8	2,184.6	224.08
	7,807.0	90.90	155.90	6,643.9	-1,657.0	-1,486.1	2,225.8	221.89
	7,902.0	91.30	156.40	6,642.1	-1,743.9	-1,447.6	2,266.4	219.70
	7,997.0	89.90	151.70	6,641.1	-1,829.3	-1,406.1	2,307.2	217.55
	8,092.0	89.50	150.40	6,641.6	-1,912.4	-1,360.1	2,346.7	215.42
	8,187.0	89.40	150.00	6,642.5	-1,994.8	-1,312.9	2,388.1	213.35
	8,282.0	92.00	152.00	6,641.3	-2,077.9	-1,266.8	2,433.6	211.37
	8,376.0	90.60	150.10	6,639.2	-2,160.1	-1,221.4	2,481.5	209.48
	8,471.0	89.80	148.30	6,638.8	-2,241.7	-1,172.7	2,529.9	207.62
	8,566.0	88.60	147.20	6,640.2	-2,322.0		2,578.9	205.79

RECEIVED
Office of Oil and Gas

MAY 7 2019

WV Department of
Environmental Protection



QES Survey Certification Report



Company: Jay-Bee Oil & Gas	Local Co-ordinate Reference: Well Dopey 1A
Project: Tyler County	TVD Reference: well @ 931.3usft (Nomac #81)
Site: Dopey Pad	MD Reference: well @ 931.3usft (Nomac #81)
Well: Dopey 1A	North Reference: Grid
Wellbore: Wellbore #1	Survey Calculation Method: Minimum Curvature
Design: Wellbore #1	Database: EDM 5000.1 Single User Db

Survey	MD (usft)	Inc (°)	Azi (azimuth) (°)	TVD (usft)	N/S (usft)	E/W (usft)	Closure Distance (usft)	Closure Azimuth (°)
	8,661.0	88.70	149.90	6,642.4	-2,403.1	-1,072.5	2,631.5	204.05
	8,756.0	91.10	152.40	6,642.6	-2,486.3	-1,026.7	2,689.9	202.44
	8,851.0	92.00	153.10	6,640.0	-2,570.7	-983.2	2,752.3	200.93
	8,946.0	90.90	149.80	6,637.6	-2,654.1	-937.8	2,814.9	199.46
	9,040.0	90.80	152.30	6,636.2	-2,736.3	-892.3	2,878.1	198.06
	9,135.0	89.10	153.30	6,636.3	-2,820.8	-848.9	2,945.8	196.75
	9,229.0	88.40	152.30	6,638.3	-2,904.4	-805.9	3,014.1	195.51
	9,324.0	88.00	152.30	6,641.3	-2,988.5	-761.8	3,084.0	194.30
	9,418.0	87.60	149.70	6,644.9	-3,070.6	-716.2	3,153.1	193.13
	9,513.0	89.70	149.70	6,647.2	-3,152.6	-668.3	3,222.7	191.97
	9,608.0	90.30	153.40	6,647.2	-3,236.1	-623.1	3,295.6	190.90
	9,703.0	88.90	151.30	6,647.8	-3,320.3	-579.0	3,370.4	189.89
	9,798.0	89.60	147.70	6,649.1	-3,402.1	-530.8	3,443.3	188.87
	9,893.0	89.10	148.60	6,650.2	-3,482.8	-480.7	3,515.8	187.86
	9,988.0	89.10	148.70	6,651.6	-3,563.9	-431.3	3,589.9	186.90
	10,083.0	90.60	149.50	6,651.9	-3,645.4	-382.5	3,665.4	185.99
	10,178.0	90.60	151.20	6,650.9	-3,728.0	-335.5	3,743.0	185.14
	10,272.0	90.40	150.90	6,650.1	-3,810.2	-290.0	3,821.3	184.35
	10,367.0	90.80	152.20	6,649.1	-3,893.8	-244.7	3,901.4	183.60
	10,462.0	88.20	145.30	6,649.9	-3,974.9	-195.5	3,979.7	182.82
	10,557.0	88.80	149.40	6,652.4	-4,054.9	-144.3	4,057.4	182.04
	10,651.0	89.90	149.00	6,653.5	-4,135.6	-96.1	4,136.7	181.33
	10,746.0	89.70	149.40	6,653.8	-4,217.2	-47.5	4,217.5	180.65
	10,841.0	89.50	146.80	6,654.5	-4,297.8	2.7	4,297.8	179.96
	10,936.0	92.40	150.90	6,652.9	-4,379.1	51.8	4,379.4	179.32
	11,031.0	91.30	152.30	6,649.8	-4,462.6	97.0	4,463.7	178.75
	11,126.0	91.40	152.60	6,647.6	-4,546.8	140.9	4,549.0	178.22
	11,221.0	90.00	150.90	6,646.4	-4,630.5	185.9	4,634.2	177.70
	11,316.0	89.80	150.10	6,646.6	-4,713.2	232.7	4,718.9	177.17
	11,410.0	89.60	149.60	6,647.1	-4,794.5	279.9	4,802.6	176.66
	11,505.0	90.00	148.50	6,647.4	-4,875.9	328.7	4,887.0	176.14
	11,600.0	89.40	148.50	6,647.9	-4,956.9	378.4	4,971.4	175.64
	11,695.0	92.20	149.90	6,646.6	-5,038.5	427.0	5,056.6	175.16
	11,790.0	91.10	147.70	6,643.8	-5,119.7	476.2	5,141.8	174.69
	11,885.0	91.90	151.30	6,641.4	-5,201.5	524.4	5,227.9	174.24
	11,980.0	91.60	150.50	6,638.5	-5,284.5	570.6	5,315.2	173.84
	12,075.0	92.40	150.90	6,635.1	-5,367.3	617.0	5,402.7	173.44
	12,170.0	90.90	151.70	6,632.4	-5,450.6	662.6	5,490.7	173.07
	12,265.0	89.60	151.50	6,632.0	-5,534.2	707.8	5,579.2	172.71
	12,360.0	89.00	150.70	6,633.2	-5,617.3	753.7	5,667.7	172.36
	12,423.0	90.10	152.40	6,633.6	-5,672.7	783.7	5,726.6	172.13
	12,499.0	90.50	153.00	6,633.3	-5,740.2	818.6	5,798.3	171.88
	12,551.0	90.50	153.00	6,632.8	-5,786.6	842.2	5,847.5	171.72

TD @ 12551.0' MD / 6632.8' TVD

Office of Environmental Protection
MAY 7 2019



QES Survey Certification Report



Company:	Jay-Bee Oil & Gas	Local Co-ordinate Reference:	Well Dopey 1A
Project:	Tyler County	TVD Reference:	well @ 931.3usft (Nomac #81)
Site:	Dopey Pad	MD Reference:	well @ 931.3usft (Nomac #81)
Well:	Dopey 1A	North Reference:	Grid
Wellbore:	Wellbore #1	Survey Calculation Method:	Minimum Curvature
Design:	Wellbore #1	Database:	EDM 5000.1 Single User Db

Design Annotations				
Measured Depth (usft)	Vertical Depth (usft)	Local Coordinates		Comment
		+N/-S (usft)	+E/-W (usft)	
368.0	367.9	-0.5	4.6	Gyro Tie-in @ 368.0' MD / 367.9' TVD
12,551.0	6,632.8	-5,786.6	842.2	TD @ 12551.0' MD / 6632.8' TVD

RECEIVED
Office of Oil and Gas
MAY 7 2019
WV Department of
Environmental Protection