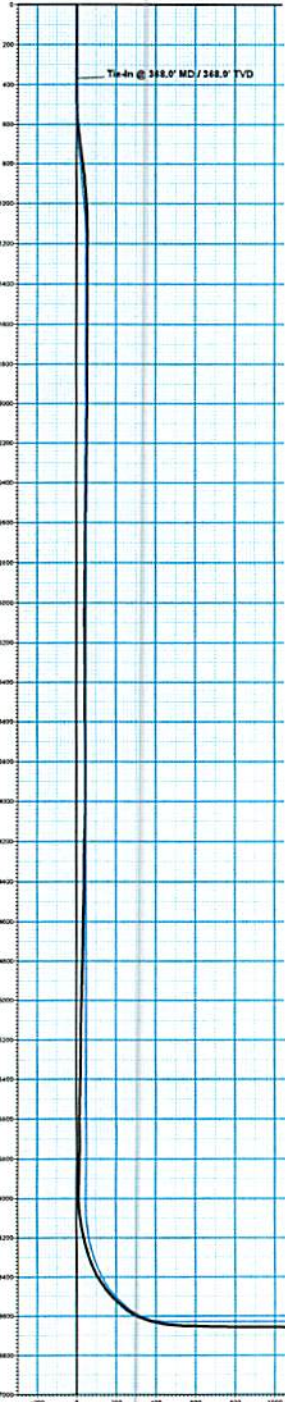
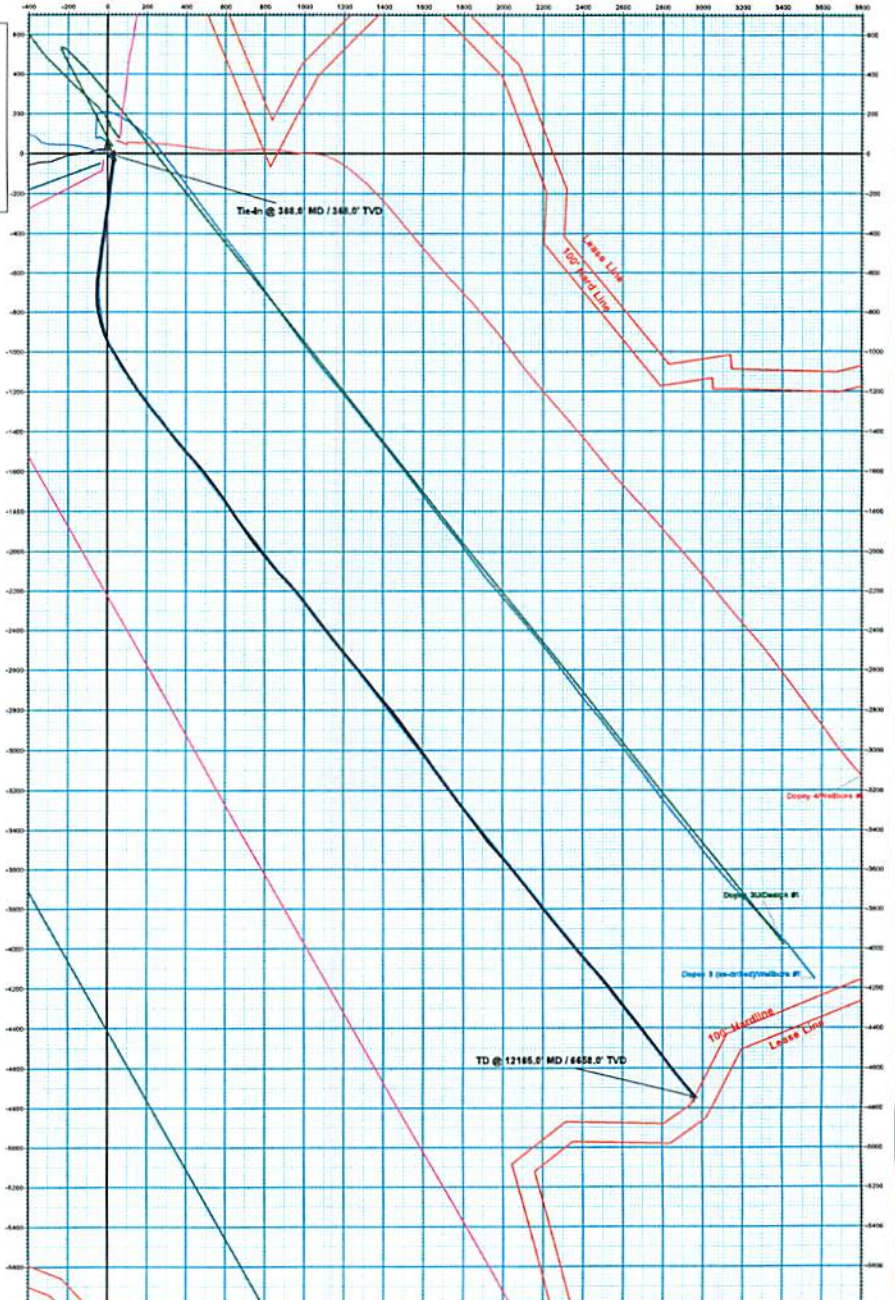
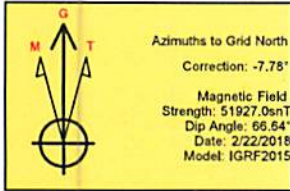


Company Name: Jay-Bee Oil & Gas  
 Dopey 2  
 Tyler County  
 Rig: Patterson #581  
 Created By: Will Jircik  
 Date: 3/6/2018

Dopey 2  
 Tyler County  
 Q180255 & AM-180223  
 Design #4

PROJECT DETAILS: Tyler County  
 Geodetic System: US State Plane 1983  
 Datum: North American Datum 1983  
 Ellipsoid: GRS 1980  
 Zone: West Virginia Northern Zone  
 System Datum: Mean Sea Level

WELL DETAILS: Dopey 2  
 Ground Level: 916.7  
 Northing: 344224.54  
 Easting: 1609113.52  
 Latitude: 39° 25' 17.153 N  
 Longitude: 80° 45' 21.871 W



ANNOTATIONS

MD	Inc	Azi	TVD	+N-S	+E-W	VSec	Departure	Annotation
368.0	0.34	35.58	368.0	0.7	0.4	-0.3	1.0	Tie-In @ 368.0' MD / 368.0' TVD
12166.0	90.10	139.20	6658.0	-4746.0	2964.4	6542.7	5924.3	TD @ 12166.0' MD / 6658.0' TVD

SECTION DETAILS

Sec	MD	Inc	Azi	TVD	+N-S	+E-W	Diag	TFace	VSec	Notes
1	368.0	0.34	35.58	368.0	0.7	0.4	0.00	0.00	-0.3	gyro Tie-in
2	609.0	0.34	35.63	609.0	1.4	0.8	0.00	0.00	-0.6	Build 4" / 100'
3	826.7	5.00	135.00	826.8	-2.2	5.0	4.00	193.21	4.8	ECB @ 5.00° Inc. / 135.00° Azm
4	1076.7	5.00	135.00	1073.8	-29.9	32.8	0.00	0.00	43.7	Drop 4" / 100'
5	1300.7	0.00	0.00	1188.6	-33.8	36.5	4.00	180.00	49.1	ECB @ Vertical
6	6059.1	0.00	0.00	6057.0	-33.8	36.5	0.00	0.00	49.1	Build 10" / 100'
7	6959.1	90.00	187.23	6630.0	-602.2	-35.6	10.00	187.23	491.1	ECB @ 90.00° Inc. / 187.23° Azm / Turn 8" / 100'
8	7537.1	90.00	141.78	6630.0	-1135.4	113.2	0.00	-90.00	961.4	ECB @ 141.78° Azm
9	12128.4	90.00	141.78	6616.0	-4750.5	2958.6	0.00	0.00	6562.7	TD @ 12128.4' MD / 6630.0' TVD

DESIGN TARGET DETAILS

Name	TVD	+N-S	+E-W	Northing	Easting	Latitude	Longitude
PdSL - Dopey 2	6630.0	-4750.5	2958.6	339478.63	1612072.54	39° 25' 36.817 N	80° 45' 42.512 W

RECEIVED  
 Office of Oil and Gas  
 MAY 7 2019  
 Department of Energy

Vertical Section at 141.78° (200 us/Min)



# Jay-Bee Oil & Gas

Tyler County

Dopey Pad

Dopey 2

Wellbore #1

Design: Wellbore #1

## QES Survey Certification Report

06 March, 2018

RECEIVED  
Office of Oil and Gas

MAY 7 2019

WV Department of  
Environmental Protection



## Quintana Energy Services

11390 FM 830  
Willis, TX 77318  
Phone: (936) 856-4332  
Fax: (936) 856-8678



### Survey Certification Sheet

Company	Job Number	Date
Jay- Bee Oil& Gas	AM-180223	4/23/2018

Lease	Well Name	County & State
N/A	Dopey #2	Tyler County, West Virginia

API No.	Survey Depth Range	Survey Type
47-095-02460	368 feet to 12165 feet MD	MWD

Sidetrack Information	Directional Supervisor/Surveyor
<a href="#">Click here to enter text.</a>	Adam Ball

### Certification Statement

The data and calculations for this survey have been checked by me and conform to the standards and procedures set forth by Quintana Energy Services (QES). This report represents a true and correct directional survey of this well based on the original data obtained at the well site. Wellbore coordinates are calculated using minimum curvature.

**Christopher Hughes**

Digitally signed by Christopher Hughes  
DN: cn=Christopher Hughes, o=QES,  
ou=compliance, email=chrish@qeslp.com, c=US  
Date: 2018.04.27 09:56:59 -05'00'

Christopher Hughes  
MWD Compliance Manager  
Quintana Energy Services

RECEIVED  
Office of Oil and Gas  
MAY 7 2019  
WV Department of  
Environmental Protection



QES Survey Certification Report



<b>Company:</b>	Jay-Bee Oil & Gas	<b>Local Co-ordinate Reference:</b>	Well Dopey 2
<b>Project:</b>	Tyler County	<b>TVD Reference:</b>	well @ 931.3usft (Nomac #81)
<b>Site:</b>	Dopey Pad	<b>MD Reference:</b>	well @ 931.3usft (Nomac #81)
<b>Well:</b>	Dopey 2	<b>North Reference:</b>	Grid
<b>Wellbore:</b>	Wellbore #1	<b>Survey Calculation Method:</b>	Minimum Curvature
<b>Design:</b>	Wellbore #1	<b>Database:</b>	EDM 5000.1 Single User Db

<b>Project</b>	Tyler County		
<b>Map System:</b>	US State Plane 1983	<b>System Datum:</b>	Mean Sea Level
<b>Geo Datum:</b>	North American Datum 1983		
<b>Map Zone:</b>	West Virginia Northern Zone		

<b>Site</b>	Dopey Pad				
<b>Site Position:</b>		<b>Northing:</b>	344,194.77 usft	<b>Latitude:</b>	39° 26' 16.836 N
<b>From:</b>	Lat/Long	<b>Easting:</b>	1,609,090.36 usft	<b>Longitude:</b>	80° 46' 21.360 W
<b>Position Uncertainty:</b>	0.0 usft	<b>Slot Radius:</b>	13-3/16"	<b>Grid Convergence:</b>	-0.81 °

<b>Well</b>	Dopey 2					
<b>Well Position</b>	<b>+N/-S</b>	0.0 usft	<b>Northing:</b>	344,226.54 usft	<b>Latitude:</b>	39° 26' 17.153 N
	<b>+E/-W</b>	0.0 usft	<b>Easting:</b>	1,609,113.52 usft	<b>Longitude:</b>	80° 46' 21.071 W
<b>Position Uncertainty</b>		0.0 usft	<b>Wellhead Elevation:</b>	0.0 usft	<b>Ground Level:</b>	910.7 usft

<b>Wellbore</b>	Wellbore #1				
<b>Magnetics</b>	<b>Model Name</b>	<b>Sample Date</b>	<b>Declination (°)</b>	<b>Dip Angle (°)</b>	<b>Field Strength (nT)</b>
	IGRF2015	2/22/2018	-8.59	66.64	51,927.04201567

<b>Design</b>	Wellbore #1				
<b>Audit Notes:</b>					
<b>Version:</b>	1.0	<b>Phase:</b>	ACTUAL	<b>Tie On Depth:</b>	0.0
<b>Vertical Section:</b>		<b>Depth From (TVD) (usft)</b>	<b>+N/-S (usft)</b>	<b>+E/-W (usft)</b>	<b>Direction (°)</b>
		0.0	0.0	0.0	141.78

<b>Survey Program</b>	<b>Date</b>	3/6/2018			
<b>From (usft)</b>	<b>To (usft)</b>	<b>Survey (Wellbore)</b>	<b>Tool Name</b>	<b>Description</b>	
50.0	368.0	Gyro (Wellbore #1)	GYRO-NS	OWSG Gyrocompass Gyro	
417.0	12,165.0	QES MWD Surveys (Wellbore #1)	OWSG MWD - Standard	OWSG MWD - Standard	

RECEIVED  
Office of Oil and Gas  
MAY 7 2019

<b>Survey</b>	<b>MD (usft)</b>	<b>Inc (°)</b>	<b>Azi (azimuth) (°)</b>	<b>TVD (usft)</b>	<b>N/S (usft)</b>	<b>E/W (usft)</b>	<b>Closure Distance (usft)</b>	<b>Closure Azimuth (°)</b>
	368.0	0.34	35.58	368.0	0.7	0.4	0.8	29.10
	<b>Tie-In @ 368.0' MD / 368.0' TVD</b>							
	417.0	0.27	3.58	417.0	0.9	0.5	1.1	27.31
	512.0	2.36	133.02	512.0	-0.2	1.9	1.9	94.82
	607.0	5.85	138.48	606.7	-5.1	6.6	8.3	127.93
	702.0	7.37	136.09	701.1	-13.1	14.0	19.2	133.16
	797.0	7.41	136.04	795.3	-21.9	22.5	31.4	134.29
	892.0	5.17	134.11	889.7	-29.3	29.8	41.8	134.53
	987.0	3.71	127.88	984.4	-34.2	35.3	49.2	134.08
	1,081.0	1.47	115.61	1,078.3	-36.6	38.8	53.3	133.31
	1,176.0	1.00	334.97	1,173.3	-36.4	39.6	53.7	132.59

WV Department of Environmental Protection



QES Survey Certification Report



<b>Company:</b>	Jay-Bee Oil & Gas	<b>Local Co-ordinate Reference:</b>	Well Dopey 2
<b>Project:</b>	Tyler County	<b>TVD Reference:</b>	well @ 931.3usft (Nomac #81)
<b>Site:</b>	Dopey Pad	<b>MD Reference:</b>	well @ 931.3usft (Nomac #81)
<b>Well:</b>	Dopey 2	<b>North Reference:</b>	Grid
<b>Wellbore:</b>	Wellbore #1	<b>Survey Calculation Method:</b>	Minimum Curvature
<b>Design:</b>	Wellbore #1	<b>Database:</b>	EDM 5000.1 Single User Db

Survey	MD (usft)	Inc (°)	Azi (azimuth) (°)	TVD (usft)	N/S (usft)	E/W (usft)	Closure Distance (usft)	Closure Azimuth (°)
	1,270.0	0.39	320.21	1,267.3	-35.4	39.0	52.6	132.21
	1,365.0	0.29	249.11	1,362.3	-35.2	38.6	52.2	132.39
	1,460.0	0.08	255.56	1,457.3	-35.3	38.3	52.1	132.69
	1,555.0	0.26	128.57	1,552.3	-35.5	38.4	52.3	132.73
	1,649.0	0.55	70.65	1,646.3	-35.4	39.0	52.7	132.28
	1,743.0	0.83	78.66	1,740.3	-35.2	40.1	53.3	131.27
	1,838.0	0.14	8.28	1,835.3	-34.9	40.8	53.7	130.58
	1,933.0	0.42	291.09	1,930.3	-34.7	40.5	53.3	130.60
	2,028.0	0.34	292.49	2,025.3	-34.4	39.9	52.7	130.82
	2,126.0	0.42	302.74	2,123.3	-34.1	39.3	52.0	130.98
	2,220.0	0.51	312.98	2,217.3	-33.7	38.7	51.3	131.02
	2,315.0	0.48	300.73	2,312.3	-33.2	38.0	50.5	131.08
	2,410.0	0.38	291.82	2,407.3	-32.8	37.4	49.8	131.28
	2,504.0	1.40	351.86	2,501.3	-31.6	37.0	48.6	130.52
	2,599.0	1.54	339.79	2,596.2	-29.2	36.4	46.7	128.82
	2,697.0	0.71	267.36	2,694.2	-28.0	35.3	45.1	128.47
	2,792.0	0.60	266.83	2,789.2	-28.1	34.2	44.3	129.39
	2,887.0	0.70	236.11	2,884.2	-28.4	33.2	43.7	130.56
	2,981.0	0.93	337.90	2,978.2	-28.1	32.5	42.9	130.83
	3,076.0	0.58	108.02	3,073.2	-27.5	32.6	42.7	130.11
	3,171.0	0.34	85.81	3,168.2	-27.6	33.4	43.3	129.61
	3,266.0	0.43	109.39	3,263.2	-27.7	34.0	43.9	129.20
	3,361.0	0.52	99.67	3,358.2	-27.9	34.8	44.6	128.77
	3,455.0	0.59	116.31	3,452.2	-28.2	35.6	45.4	128.38
	3,550.0	0.53	107.00	3,547.2	-28.5	36.5	46.3	128.05
	3,645.0	0.29	104.36	3,642.2	-28.7	37.1	46.9	127.74
	3,739.0	0.32	81.50	3,736.2	-28.8	37.6	47.3	127.40
	3,834.0	0.60	56.73	3,831.2	-28.4	38.3	47.7	126.60
	3,929.0	0.71	51.78	3,926.2	-27.8	39.2	48.0	125.37
	4,024.0	1.01	315.04	4,021.2	-26.8	39.0	47.4	124.52
	4,118.0	1.17	298.95	4,115.1	-25.8	37.6	45.6	124.44
	4,213.0	1.20	301.00	4,210.1	-24.8	35.9	43.6	124.64
	4,308.0	1.25	287.43	4,305.1	-24.0	34.1	41.7	125.15
	4,402.0	0.98	278.84	4,399.1	-23.6	32.3	40.0	126.11
	4,496.0	1.13	346.87	4,493.1	-22.5	31.3	38.6	125.76
	4,591.0	1.51	352.78	4,588.0	-20.4	30.9	37.0	123.39
	4,686.0	1.48	346.70	4,683.0	-17.9	30.5	35.4	120.48
	4,781.0	1.42	345.86	4,778.0	-15.6	29.9	33.7	117.56
	4,876.0	1.46	347.19	4,873.0	-13.3	29.4	32.2	114.35
	4,971.0	1.61	346.34	4,967.9	-10.8	28.8	30.7	110.59
	5,065.0	1.83	345.06	5,061.9	-8.1	28.1	29.2	106.05
	5,160.0	0.71	22.32	5,156.9	-6.1	27.9	28.6	102.26
	5,254.0	1.39	29.29	5,250.8	-4.5	29.5	29.0	98.98
	5,348.0	1.37	11.67	5,344.8	-2.4			94.73

RECEIVED  
Office of Oil and Gas  
MAY 7 2019



QES Survey Certification Report



<b>Company:</b>	Jay-Bee Oil & Gas	<b>Local Co-ordinate Reference:</b>	Well Dopey 2
<b>Project:</b>	Tyler County	<b>TVD Reference:</b>	well @ 931.3usft (Nomac #81)
<b>Site:</b>	Dopey Pad	<b>MD Reference:</b>	well @ 931.3usft (Nomac #81)
<b>Well:</b>	Dopey 2	<b>North Reference:</b>	Grid
<b>Wellbore:</b>	Wellbore #1	<b>Survey Calculation Method:</b>	Minimum Curvature
<b>Design:</b>	Wellbore #1	<b>Database:</b>	EDM 5000.1 Single User Db

Survey	MD (usft)	Inc (°)	Azi (azimuth) (°)	TVD (usft)	N/S (usft)	E/W (usft)	Closure Distance (usft)	Closure Azimuth (°)
	5,443.0	1.61	7.73	5,439.8	0.0	29.9	29.9	90.01
	5,537.0	1.92	5.03	5,533.7	2.9	30.2	30.3	84.56
	5,632.0	1.02	44.38	5,628.7	5.1	30.9	31.3	80.70
	5,726.0	1.09	24.11	5,722.7	6.5	31.9	32.5	78.51
	5,821.0	1.07	3.66	5,817.7	8.2	32.3	33.3	75.78
	5,915.0	1.08	27.59	5,911.7	9.8	32.8	34.2	73.27
	5,960.0	1.50	24.60	5,956.6	10.8	33.2	34.9	72.05
	6,007.0	1.60	192.30	6,003.6	10.7	33.3	35.0	72.23
	6,054.0	6.50	192.20	6,050.5	7.4	32.6	33.5	77.16
	6,102.0	9.20	189.60	6,098.1	1.0	31.4	31.4	88.19
	6,149.0	13.00	187.60	6,144.2	-8.0	30.1	31.1	104.81
	6,197.0	16.60	187.30	6,190.6	-20.1	28.5	34.9	125.21
	6,244.0	19.40	186.90	6,235.3	-34.5	26.7	43.6	142.27
	6,292.0	23.90	187.20	6,279.9	-52.1	24.5	57.6	154.79
	6,339.0	28.90	187.40	6,321.9	-72.8	21.9	76.0	163.28
	6,386.0	33.50	185.80	6,362.1	-97.0	19.1	98.9	168.86
	6,433.0	37.80	185.60	6,400.3	-124.2	16.4	125.3	172.49
	6,481.0	42.30	185.80	6,437.1	-155.0	13.3	155.5	175.09
	6,528.0	46.50	186.30	6,470.6	-187.7	9.8	187.9	177.00
	6,576.0	51.70	187.10	6,502.0	-223.7	5.6	223.8	178.57
	6,623.0	56.40	187.20	6,529.6	-261.4	0.9	261.4	179.81
	6,671.0	60.40	187.90	6,554.8	-301.9	-4.5	302.0	180.86
	6,718.0	64.20	189.20	6,576.6	-343.1	-10.7	343.2	181.79
	6,765.0	69.10	188.30	6,595.2	-385.7	-17.3	386.1	182.56
	6,812.0	73.60	187.80	6,610.3	-429.8	-23.5	430.4	183.13
	6,860.0	77.50	187.50	6,622.2	-475.9	-29.7	476.8	183.57
	6,907.0	80.10	187.80	6,631.4	-521.5	-35.8	522.8	183.93
	6,955.0	82.40	187.90	6,638.7	-568.5	-42.3	570.1	184.25
	7,002.0	85.00	186.10	6,643.8	-614.9	-48.0	616.8	184.46
	7,050.0	86.60	183.80	6,647.3	-662.6	-52.1	664.6	184.50
	7,097.0	88.20	180.00	6,649.5	-709.5	-53.7	711.5	184.33
	7,144.0	88.60	174.40	6,650.8	-756.4	-51.4	758.2	183.89
	7,191.0	88.50	169.10	6,652.0	-802.9	-44.6	804.1	183.18
	7,239.0	88.20	165.50	6,653.4	-849.7	-34.1	850.4	182.30
	7,286.0	88.00	160.40	6,654.9	-894.6	-20.3	894.8	181.30
	7,333.0	88.90	155.10	6,656.2	-938.1	-2.5	938.1	180.16
	7,380.0	88.70	151.00	6,657.2	-979.9	18.8	980.1	178.90
	7,428.0	89.70	148.80	6,657.9	-1,021.5	42.8	1,022.4	177.60
	7,523.0	91.40	148.10	6,656.9	-1,102.4	92.5	1,106.3	175.20
	7,617.0	88.40	143.00	6,657.1	-1,179.9	145.7	1,188.8	172.96
	7,712.0	87.40	143.10	6,660.6	-1,255.8	202.7	1,272.0	170.83
	7,807.0	88.50	140.50	6,664.0	-1,330.4	261.4	1,355.8	168.88
	7,901.0	90.30	142.20	6,665.0	-1,403.8	320.1	1,439.8	167.15
	7,996.0	90.70	139.70	6,664.1	-1,477.5	380.0	1,525.6	165.58



QES Survey Certification Report



<b>Company:</b>	Jay-Bee Oil & Gas	<b>Local Co-ordinate Reference:</b>	Well Dopey 2
<b>Project:</b>	Tyler County	<b>TVD Reference:</b>	well @ 931.3usft (Nomac #81)
<b>Site:</b>	Dopey Pad	<b>MD Reference:</b>	well @ 931.3usft (Nomac #81)
<b>Well:</b>	Dopey 2	<b>North Reference:</b>	Grid
<b>Wellbore:</b>	Wellbore #1	<b>Survey Calculation Method:</b>	Minimum Curvature
<b>Design:</b>	Wellbore #1	<b>Database:</b>	EDM 5000.1 Single User Db

Survey								
MD (usft)	Inc (°)	Azi (azimuth) (°)	TVD (usft)	N/S (usft)	E/W (usft)	Closure Distance (usft)	Closure Azimuth (°)	
8,091.0	88.90	137.70	6,664.5	-1,548.9	442.7	1,610.9	164.05	
8,186.0	89.10	142.00	6,666.1	-1,621.5	503.9	1,698.0	162.74	
8,281.0	89.60	143.70	6,667.2	-1,697.2	561.3	1,787.6	161.70	
8,376.0	90.40	144.60	6,667.2	-1,774.2	616.9	1,878.4	160.83	
8,471.0	91.20	145.90	6,665.9	-1,852.2	671.1	1,970.1	160.08	
8,566.0	90.60	143.50	6,664.4	-1,929.8	725.9	2,061.8	159.38	
8,661.0	89.80	140.20	6,664.1	-2,004.4	784.6	2,152.5	158.62	
8,756.0	89.60	139.40	6,664.6	-2,077.0	845.9	2,242.7	157.84	
8,850.0	89.20	136.90	6,665.5	-2,147.0	908.6	2,331.4	157.06	
8,945.0	90.10	142.00	6,666.1	-2,219.2	970.4	2,422.1	156.38	
9,040.0	90.50	143.00	6,665.6	-2,294.5	1,028.2	2,514.4	155.86	
9,134.0	90.10	142.10	6,665.1	-2,369.2	1,085.4	2,606.0	155.39	
9,229.0	89.30	141.40	6,665.6	-2,443.8	1,144.2	2,698.4	154.91	
9,323.0	88.80	140.50	6,667.2	-2,516.8	1,203.4	2,789.7	154.45	
9,418.0	90.20	141.00	6,668.0	-2,590.3	1,263.5	2,882.0	154.00	
9,513.0	91.00	141.70	6,667.0	-2,664.5	1,322.8	2,974.8	153.60	
9,608.0	90.10	139.00	6,666.1	-2,737.6	1,383.4	3,067.3	153.19	
9,703.0	88.90	140.60	6,666.9	-2,810.2	1,444.7	3,159.8	152.79	
9,797.0	89.20	142.70	6,668.5	-2,883.9	1,503.1	3,252.1	152.47	
9,892.0	89.10	142.90	6,669.9	-2,959.6	1,560.5	3,345.8	152.20	
9,987.0	90.50	144.80	6,670.2	-3,036.3	1,616.5	3,439.8	151.97	
10,081.0	90.70	143.70	6,669.3	-3,112.6	1,671.4	3,532.9	151.76	
10,176.0	90.70	143.50	6,668.1	-3,189.0	1,727.8	3,627.0	151.55	
10,271.0	89.90	142.00	6,667.6	-3,264.6	1,785.3	3,720.9	151.33	
10,365.0	90.40	143.50	6,667.4	-3,339.4	1,842.2	3,813.9	151.12	
10,460.0	90.70	144.50	6,666.4	-3,416.3	1,898.0	3,908.2	150.94	
10,555.0	89.60	138.90	6,666.2	-3,490.8	1,956.9	4,001.9	150.73	
10,649.0	89.90	140.00	6,666.6	-3,562.2	2,018.0	4,094.1	150.47	
10,744.0	91.30	141.90	6,665.6	-3,636.0	2,077.9	4,187.8	150.25	
10,839.0	91.60	142.00	6,663.2	-3,710.8	2,136.4	4,281.8	150.07	
10,934.0	90.90	142.90	6,661.1	-3,786.1	2,194.3	4,376.0	149.91	
11,028.0	89.60	141.00	6,660.7	-3,860.1	2,252.2	4,469.1	149.74	
11,123.0	89.70	140.20	6,661.3	-3,933.5	2,312.5	4,562.9	149.55	
11,218.0	90.60	141.30	6,661.1	-4,007.1	2,372.6	4,656.8	149.37	
11,313.0	90.20	138.80	6,660.4	-4,079.9	2,433.6	4,750.6	149.18	
11,408.0	89.10	139.60	6,661.0	-4,151.8	2,495.7	4,844.2	148.99	
11,503.0	91.10	142.70	6,660.8	-4,225.8	2,555.3	4,938.3	148.84	
11,598.0	88.70	142.20	6,661.0	-4,301.1	2,613.1	5,032.7	148.72	
11,692.0	89.10	141.80	6,662.8	-4,375.2	2,671.0	5,126.0	148.60	
11,787.0	90.50	142.90	6,663.1	-4,450.4	2,729.0	5,220.5	148.48	
11,882.0	91.10	142.20	6,661.8	-4,525.8	2,786.8	5,315.0	148.38	
11,976.0	91.00	141.90	6,660.1	-4,599.9	2,844.6	5,408.4	148.27	
12,070.0	90.90	141.30	6,658.5	-4,673.6	2,903.0	5,501.8	148.15	
12,113.0	90.10	139.20	6,658.1	-4,706.6	2,930.5	5,544.4	148.09	

MAY 7 2018  
 WV Department of  
 Environmental Protection



QES Survey Certification Report



<b>Company:</b>	Jay-Bee Oil & Gas	<b>Local Co-ordinate Reference:</b>	Well Dopey 2
<b>Project:</b>	Tyler County	<b>TVD Reference:</b>	well @ 931.3usft (Nomac #81)
<b>Site:</b>	Dopey Pad	<b>MD Reference:</b>	well @ 931.3usft (Nomac #81)
<b>Well:</b>	Dopey 2	<b>North Reference:</b>	Grid
<b>Wellbore:</b>	Wellbore #1	<b>Survey Calculation Method:</b>	Minimum Curvature
<b>Design:</b>	Wellbore #1	<b>Database:</b>	EDM 5000.1 Single User Db

MD (usft)	Inc (°)	Azi (azimuth) (°)	TVD (usft)	N/S (usft)	E/W (usft)	Closure Distance (usft)	Closure Azimuth (°)
12,165.0	90.10	139.20	6,658.0	-4,746.0	2,964.4	5,595.7	148.01
TD @ 12165.0' MD / 6658.0' TVD							

Measured Depth (usft)	Vertical Depth (usft)	Local Coordinates		Comment
		+N/-S (usft)	+E/-W (usft)	
368.0	368.0	0.7	0.4	Tie-In @ 368.0' MD / 368.0' TVD
12,165.0	6,658.0	-4,746.0	2,964.4	TD @ 12165.0' MD / 6658.0' TVD

Checked By: \_\_\_\_\_ Approved By: \_\_\_\_\_ Date: \_\_\_\_\_

RECEIVED  
Office of Oil and Gas  
MAY 7 2019  
WV Department of  
Environmental Protection