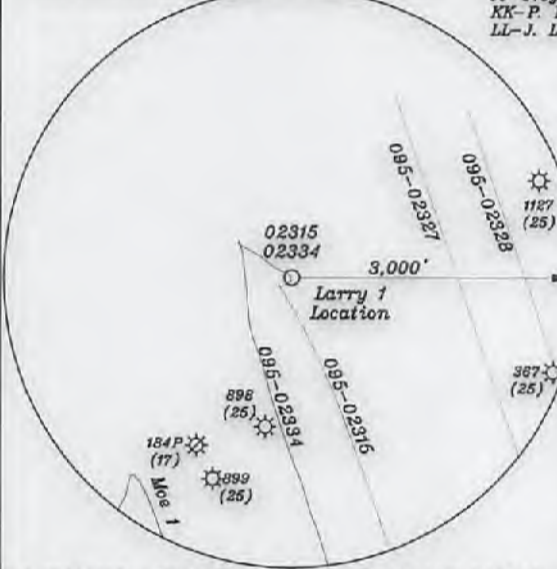
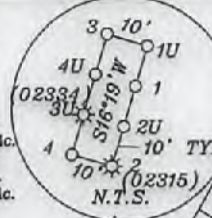


LATITUDE 39-30-00 N (TH) Bottom Hole 9,645'
LATITUDE 39-27-30 N (BH)

NUMBER	DIRECTION	DISTANCE
L1	N68°20' E	1,000.0'
L2	N16°28' E	2,498.3'
L3	S86°37' E	949.9'

- A-Peek TM. 26-46.8 2.079 Ac.
- B-Peek TM. 26-46.20 0.652 Ac.
- C-Peek TM. 26-46.19 4.59 Ac.
- D-Peek TM. 26-46.21 0.22 Ac.
- E-Sulser TM. 20-110 4.412 Ac.
- F-Kelly TM. 26-46.18 4.323 Ac.
- G-Kelly TM. 26-46.17 4.114 Ac.
- H-Johnson TM. 26-46.23 3.598 Ac.
- I-Johnson TM. 26-46.22 2.92 Ac.
- J-Holiday TM. 26-46.13 5.94 Ac.
- K-Holiday TM. 26-46.12 3.239 Ac.
- L-Kanz TM. 26-46.7 5.4 Ac.
- M-Kanz TM. 26-46.7 7.32 Ac.
- N-JayBee TM. 26-46.14 8.692 Ac.
- O-Pittman TM. 26-46.2 5.135 Ac.
- P-Johnson TM. 26-46.9 5 Ac.
- Q-Kanz TM. 26-46.6 1.702 Ac.
- R-Kanz TM. 26-46.15 3.722 Ac.
- S-JayBee TM. 26-46.16 5.094 Ac.
- T-Shrader TM. 26-46.1 5.58 Ac.
- U-Ison TM. 26-46.10 4.98 Ac.
- V-Doty TM. 26-46.5 13.14 Ac.
- W-Kanz TM. 26-46.4 8.1 Ac.
- X-Walton TM. 26-46.11 6.43 Ac.
- Y-JayBee TM. 26-46.24 3.059 Ac.
- Z-JayBee TM. 26-19.9 1.496 Ac.
- AA-Weigle TM. 27-22 60.19 Ac.
- BB-Weigle TM. 27-23 61.62 Ac.
- CC-Seckman et al TM. 27-26 128.5 Ac.
- DD-WVDNR TM. 27-3 0.44 Ac. WVDNR
- EE-Villers & Eskew TM. 20-62 67.67 Ac.
- FF-Suder TM. 20-65.1 1.58 Ac.
- GG-Baker TM. 21-39 3.15 Ac.
- HH-Fletcher & Mitchell TM. 21-37 3.86 Ac.



— LEGEND —

- Lease lines
- 500' from well bore path
- Surface tracts within lease
- Adjoiner tracts

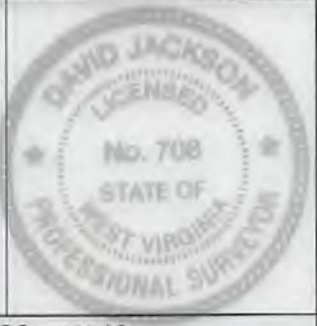
Notes:
 1. All wells within 500' of the horizontal leg are shown on this plat based upon information taken from DEP mapping, well plats, & aerial photos.
 2. Ties to wells and corners are based on State Plane Grid North-WV North Zone NAD 83.
 3. No water wells were found within 250' of the well location. A house was found 564'59" W 580' from the center of the well pad. A wetlands is located 103' from LOD.

Top Hole - TH
 Geo NAD 83 - 39.475242 N, 80.880692 W
 UTM NAD 83(Meters) - 4369523.64 N, 510261.66 E
 UTM NAD 83(Feet) - 14336678.80 N, 1674083.46 E
Landing Point - LP
 Geo NAD 83 - 39.475128 N, 80.877330 W
 UTM NAD 83(Meters) - 4369511.39 N, 510550.84 E
 UTM NAD 83(Feet) - 14336638.61 N, 1675032.21 E
Bottom Hole - BH
 Geo NAD 83 - 39.454428 N, 80.867491 W
 UTM NAD 83(Meters) - 4367215.31 N, 511400.47 E
 UTM NAD 83(Feet) - 14328105.57 N, 1677819.72 E

FILE NO. _____
 DRAWING NO. 1
 SCALE 1" = 2000'
 MINIMUM DEGREE OF ACCURACY 1 in 200
 PROVEN SOURCE OF ELEVATION GPS
submeter unit

I THE UNDERSIGNED, HEREBY CERTIFY THAT THIS PLAT IS CORRECT TO THE BEST OF MY KNOWLEDGE AND BELIEF AND SHOWS ALL THE INFORMATION REQUIRED BY LAW AND THE RULES ISSUED AND PRESCRIBED BY THE DEPARTMENT OF ENVIRONMENTAL PROTECTION.

(SIGNED) David L Jackson
 R.P.E. _____ P.S. 708



STATE OF WEST VIRGINIA
 Division of Environmental Protection
 OFFICE OF OIL AND GAS

DATE February 22, 2018
 OPERATOR'S WELL NO. Larry 1
 API WELL NO. _____

WELL TYPE: OIL X GAS X LIQUID INJECTION _____ WASTE DISPOSAL _____ STATE COUNTY PERMIT
 (IF "GAS") PRODUCTION X STORAGE _____ DEEP _____ SHALLOW X

LOCATION: ELEVATION 738.9' WATER SHED Outlet Middle Island Creek (HUC-10)
 DISTRICT Ellsworth COUNTY Tyler
 QUADRANGLE Middlebourne 7 1/2' (TH), Shirley 7 1/2' (BH)

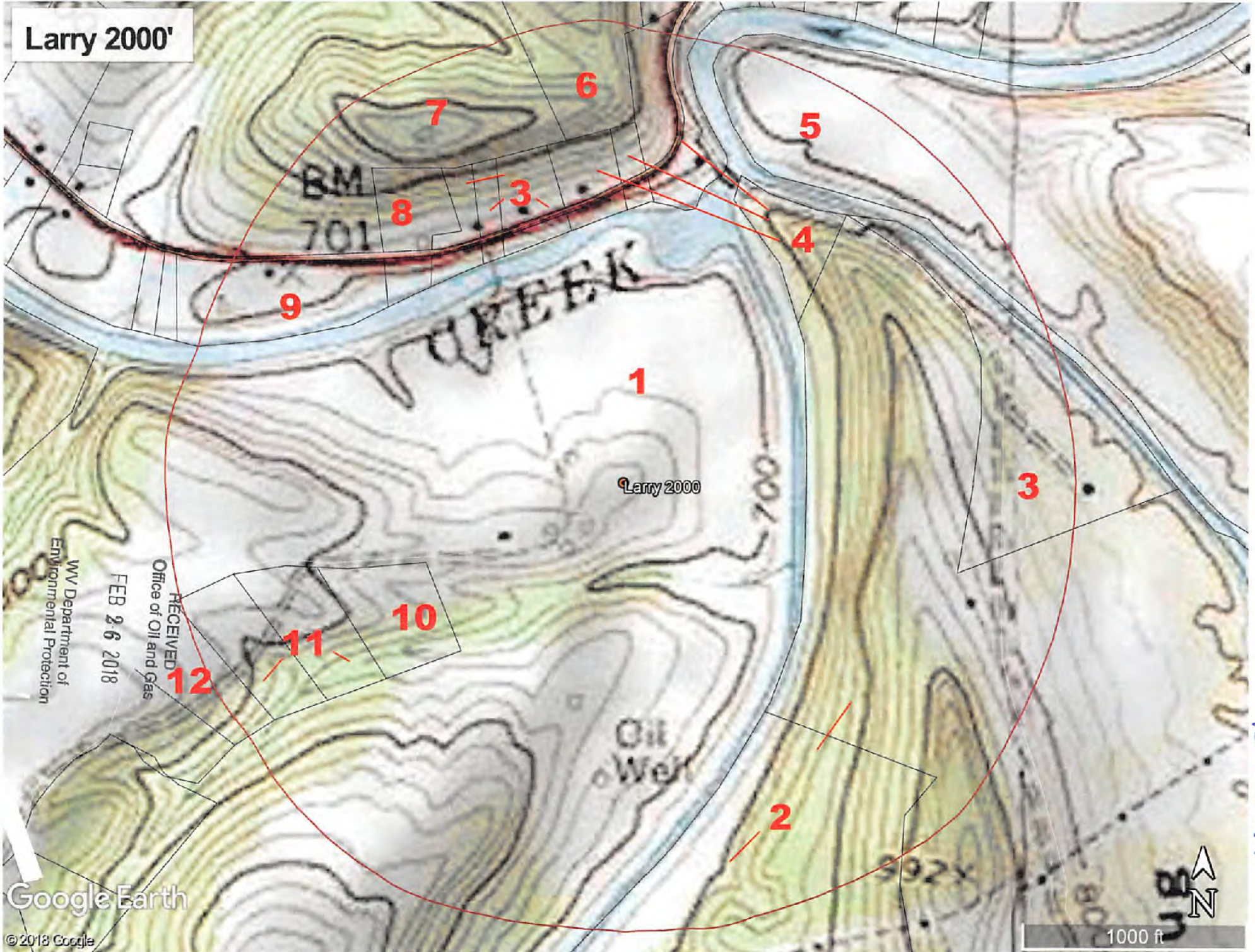
SURFACE OWNER Jay Bee Oil & Gas, Inc. ACREAGE 286.03 ac.
 OIL & GAS ROYALTY OWNER Ridgetop Capital LP, and Ridgetop Capital II, LP LEASE ACREAGE 286.03 ac
 LEASE NO. RT2

PROPOSED WORK: DRILL X CONVERT _____ DRILL DEEPER _____ REDRILL _____ FRACTURE OR STIMULATE X PLUG OFF OLD FORMATION _____ PERFORATE NEW FORMATION _____ OTHER PHYSICAL CHANGE IN WELL (SPECIFY) _____

PLUG AND ABANDON _____ CLEAN OUT AND REPLUG _____
 TARGET FORMATION Marcellus ESTIMATED DEPTH TVD = 6,201'; TMD = 15,686'
 WELL OPERATOR Jay-Bee Oil & Gas, Inc. DESIGNATED AGENT Randy Broda
 ADDRESS 1720 Route 22 E, Union, NJ 07083 ADDRESS 3570 Shields Hill Rd., Cairo, WV 26337

06/01/2018

Larry 2000'



RECEIVED
Office of Oil and Gas
FEB 26 2018
WV Department of
Environmental Protection

Google Earth

© 2018 Google

1000 ft



95-02497
L3120-SB