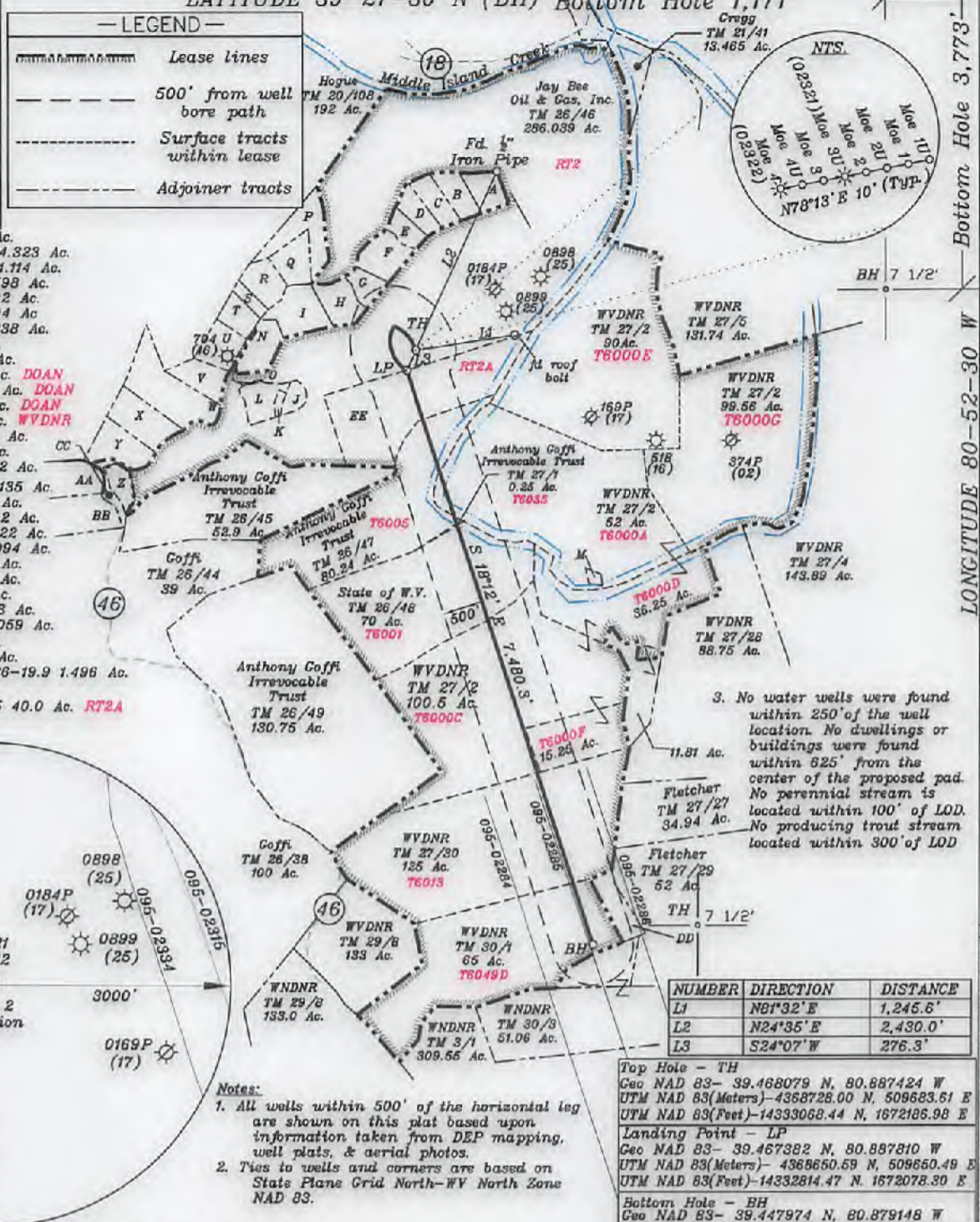
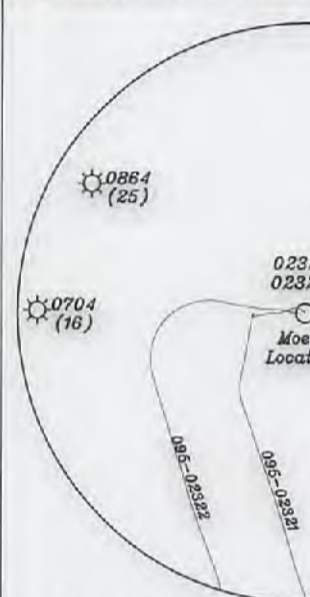


- A-Sulser TM. 20-110 4.412 Ac.
- B-Kelly et al TM. 26-46.18 4.323 Ac.
- C-Kelly et al TM. 26-46.17 4.114 Ac.
- D-Johnson TM. 26-46.23 3.598 Ac.
- E-Johnson TM. 26-46.22 2.92 Ac.
- F-Holiday TM. 26-46.13 5.94 Ac.
- G-Holiday TM. 26-46.12 3.238 Ac.
- H-Kanz TM. 26-46.3 5.4 Ac.
- I-Patera TM. 26-46.7 7.32 Ac.
- J-Peek TM. 26-46.8 2.079 Ac. **DOAN**
- K-Peek TM. 26-46.20 0.852 Ac. **DOAN**
- L-Peek TM. 26-46.19 4.59 Ac. **DOAN**
- M-WVDNR TM. 27-3 0.44 Ac. **WVDNR**
- N-Shrader TM. 26-46.1 5.58 Ac.
- O-Peek TM. 26-46.21 0.22 Ac.
- P-JayBee TM. 26-46.14 8.692 Ac.
- Q-Pittman TM. 26-46.2 5.135 Ac.
- R-Johnson TM. 26-46.9 5 Ac.
- S-Patera TM. 26-46.6 1.702 Ac.
- T-Patera TM. 26-46.15 3.722 Ac.
- U-JayBee TM. 26-46.16 5.094 Ac.
- V-Ison TM. 26-46.10 4.98 Ac.
- W-Doty TM. 26-46.5 13.14 Ac.
- X-Kanz TM. 26-46.4 8.1 Ac.
- Y-Walton TM. 26-46.11 6.43 Ac.
- Z-JayBee TM. 26-46.24 3.059 Ac.
- AA-Palmer TM. 26-19.11 9.40 Ac.
- BB-Westbrook TM. 26-19.4 9.36 Ac.
- CC-JayBee Oil & Gas, Inc. TM. 26-19.9 1.496 Ac.
- DD-WVDNR TM. 30/2 8.0 Ac.
- EE-Anthony Coffi TM. 26/46.25 40.0 Ac. **RT2A**



NUMBER	DIRECTION	DISTANCE
L1	N81°32' E	1,245.6'
L2	N24°35' E	2,430.0'
L3	S24°07' W	276.3'

- Notes:
- All wells within 500' of the horizontal leg are shown on this plat based upon information taken from DEP mapping, well plats, & aerial photos.
  - Ties to wells and corners are based on State Plane Grid North-WV North Zone NAD 83.

Top Hole - TH  
 Geo NAD 83- 39.468079 N, 80.887424 W  
 UTM NAD 83(Meters)-4358728.00 N, 509683.61 E  
 UTM NAD 83(Feet)-14333068.44 N, 1672186.98 E

Landing Point - LP  
 Geo NAD 83- 39.467382 N, 80.887810 W  
 UTM NAD 83(Meters)- 4368650.59 N, 509650.49 E  
 UTM NAD 83(Feet)-14332814.47 N, 1672078.30 E

Bottom Hole - BH  
 Geo NAD 83- 39.447974 N, 80.879148 W  
 UTM NAD 83(Meters)- 4366497.62 N, 510398.49 E  
 UTM NAD 83(Feet)-14325760.93 N, 1674532.38 E

(+) DENOTES LOCATION OF WELL ON UNITED STATES TOPOGRAPHIC MAPS

FILE NO. \_\_\_\_\_  
 DRAWING NO. 1  
 SCALE 1" = 2000'  
 MINIMUM DEGREE OF ACCURACY 1 in 200  
 PROVEN SOURCE OF ELEVATION GPS  
submeter unit

I THE UNDERSIGNED, HEREBY CERTIFY THAT THIS PLAT IS CORRECT TO THE BEST OF MY KNOWLEDGE AND BELIEF AND SHOWS ALL THE INFORMATION REQUIRED BY LAW AND THE RULES ISSUED AND PRESCRIBED BY THE DEPARTMENT OF ENVIRONMENTAL PROTECTION.

(SIGNED) David L Jackson  
 R.P.E. \_\_\_\_\_ P.S. 708



STATE OF WEST VIRGINIA  
 Division of Environmental Protection  
 OFFICE OF OIL AND GAS

DATE February 21, 2018  
 OPERATOR'S WELL NO. Moe 2  
 API WELL NO. \_\_\_\_\_

WELL TYPE: OIL GAS LIQUID INJECTION \_\_\_\_\_ WASTE DISPOSAL \_\_\_\_\_  
 (IF "GAS") PRODUCTION X STORAGE \_\_\_\_\_ DEEP X SHALLOW \_\_\_\_\_

LOCATION: ELEVATION 962.4' WATER SHED Outlet Middle Island Creek (HUC-10)  
 DISTRICT Ellsworth COUNTY Tyler  
 QUADRANGLE Middlebourne 7 1/2'

SURFACE OWNER Jay Bee Oil & Gas, Inc. ACREAGE 286.03 ac.  
 OIL & GAS ROYALTY OWNER Ridgetop Capital LP and Ridgetop Capital II, LP LEASE ACRES 286.03  
 LEASE NO. RT2

PROPOSED WORK: DRILL X CONVERT \_\_\_\_\_ DRILL DEEPER \_\_\_\_\_ REDRILL \_\_\_\_\_ FRACTURE OR STIMULATE X PLUG OFF OLD FORMATION \_\_\_\_\_ PERFORATE NEW FORMATION \_\_\_\_\_ OTHER PHYSICAL CHANGE IN WELL (SPECIFY) \_\_\_\_\_

PLUG AND ABANDON \_\_\_\_\_ CLEAN OUT AND REPLUG \_\_\_\_\_  
 TARGET FORMATION Marcellus ESTIMATED DEPTH TVD = 6,395' TMD = 14,652'  
 WELL OPERATOR Jay-Bee Oil & Gas, Inc. DESIGNATED AGENT Randy Broda  
 ADDRESS 1720 Route 22 E, Union, NJ 07083 ADDRESS 3570 Shields Hill Rd., Cairo, WV 26337

95-02498

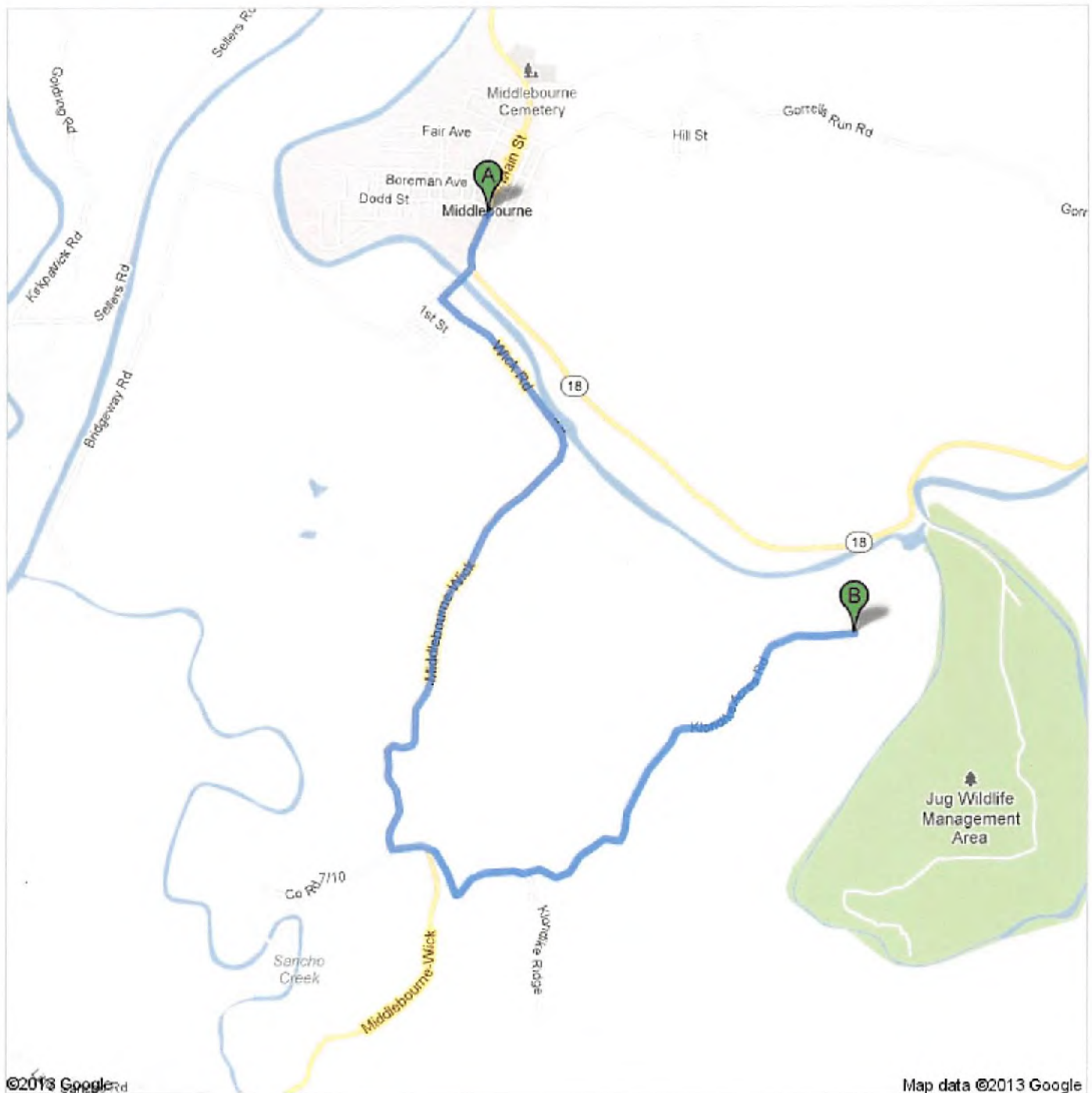
6/5/13

Middlebourne, WV to Klondike Acres Rd - Google Maps



### Directions to Klondike Acres Rd

4.2 mi – about 11 mins



©2013 Google

Map data ©2013 Google

06/29/2018