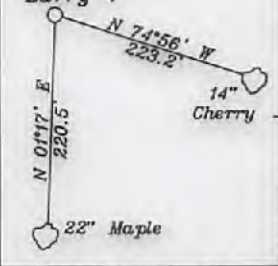
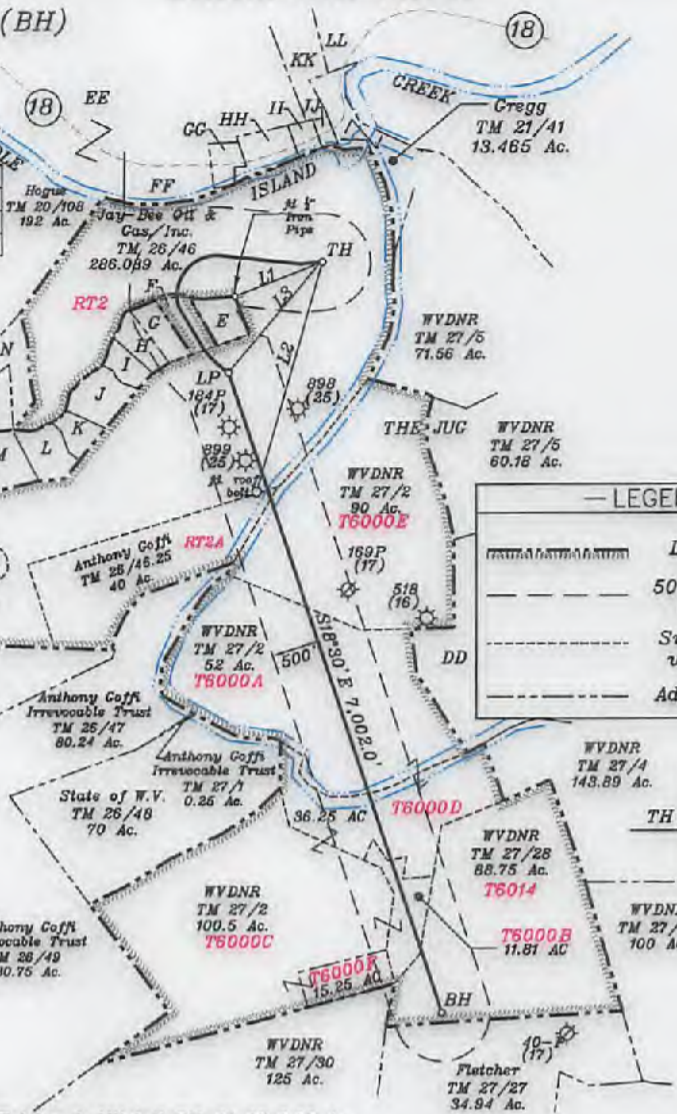
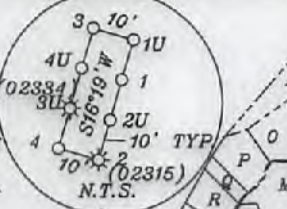


References:



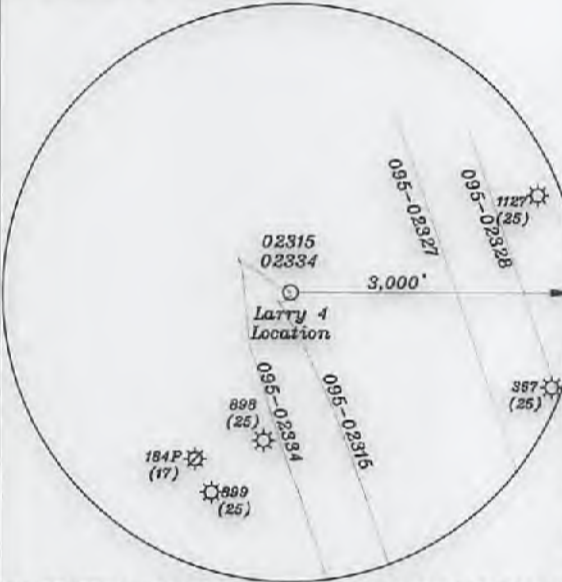
NUMBER	DIRECTION	DISTANCE
L1	N68°53' E	979.8'
L2	N16°15' E	2,478.3'
L3	S40°37' W	1,508.7'

- A-Peek TM. 26-46.8 2,079 Ac.
- B-Peek TM. 26-46.20 0,652 Ac.
- C-Peek TM. 26-46.19 4,59 Ac.
- D-Peek TM. 26-46.21 0,22 Ac.
- E-Sulser TM. 20-110 4,412 Ac.
- F-Kelly TM. 26-46.18 4,323 Ac.
- G-Kelly TM. 26-46.17 4,114 Ac.
- H-Johnson TM. 26-46.23 3,598 Ac.
- I-Johnson TM. 26-46.22 2,92 Ac.
- J-Holiday TM. 26-46.13 5,94 Ac.
- K-Holiday TM. 26-46.12 3,238 Ac.
- L-Kanz TM. 26-46.3 5,4 Ac.
- M-Kanz TM. 26-46.7 7,32 Ac.
- N-JayBee TM. 26-46.14 8,692 Ac.
- O-Pittman TM. 26-46.2 6,135 Ac.
- P-Johnson TM. 26-46.9 5 Ac.
- Q-Kanz TM. 26-46.6 1,702 Ac.
- R-Kanz TM. 26-46.15 3,722 Ac.
- S-JayBee TM. 26-46.16 5,094 Ac.
- T-Shrader TM. 26-46.1 5,58 Ac.
- U-Ison TM. 26-46.10 4,98 Ac.
- V-Doty TM. 26-46.5 13,14 Ac.
- W-Kanz TM. 26-46.4 8,1 Ac.
- X-Waiton TM. 26-46.11 6,43 Ac.
- Y-JayBee TM. 26-46.24 3,059 Ac.
- Z-JayBee TM. 26-19.9 1,498 Ac.
- AA-Weigle TM. 27-22 60,19 Ac.
- BB-Weigle TM. 27-23 61,62 Ac.
- CC-Seckman et al TM. 27-26 128.5 Ac.
- DD-WVDNR TM. 27-2 99,66 Ac.
- EE-Villers & Eskew TM. 20-62 67,67 Ac.
- FF-Suter TM. 20-65.1 1,58 Ac.
- GG-Baber TM. 21-39 3,15 Ac.



**— LEGEND —**

- — — — — Lease lines
- - - - - 500' from well bore path
- Surface tracts within lease
- - - - - Adjoinder tracts



- HH-Fletcher & Mitchell TM. 21-37 3,88 Ac.
- II-Spencer TM. 21-36 2,06 Ac.
- JJ-Cragg TM. 21-35 0,72 Ac.
- KK-P. Leisure TM. 21-26 30 Ac.
- LL-J. Leisure & Gilmore TM. 21-27 40 Ac.

- Notes:**
- All wells within 500' of the horizontal leg are shown on this plat based upon information taken from DEP mapping, well plats, & aerial photos.
  - Ties to wells and corners are based on State Plane Grid North-WV North Zone NAD 83.
  - No water wells were found within 250' of the well location. A house was found S64°59'W 580' from the center of the well pad. A wetlands is located 103' from LOD.

<b>Top Hole - TH</b>
Geo NAD 83 - 39,475196 N, 80,880745 W
UTM NAD 83(Meters)- 4369518,57 N, 510257,11 E
UTM NAD 83(Feet)-14335862,17 N, 1674068,53 E
<b>Landing Point - LP</b>
Geo NAD 83 - 39,472011 N, 80,884161 W
UTM NAD 83(Meters)- 4369164,71 N, 509963,68 E
UTM NAD 83(Feet)-14334501,21 N, 1673105,85 E
<b>Bottom Hole - BH</b>
Geo NAD 83 - 39,463877 N, 80,875932 W
UTM NAD 83(Meters)- 4367153,07 N, 510674,32 E
UTM NAD 83(Feet)-14327901,36 N, 1675437,33 E

(+) DENOTES LOCATION OF WELL ON UNITED STATES TOPOGRAPHIC MAPS

FILE NO. \_\_\_\_\_

DRAWING NO. 1

SCALE 1" = 2000'

MINIMUM DEGREE OF ACCURACY 1 in 200

PROVEN SOURCE OF ELEVATION GPS

submeter unit

I THE UNDERSIGNED, HEREBY CERTIFY THAT THIS PLAT IS CORRECT TO THE BEST OF MY KNOWLEDGE AND BELIEF AND SHOWS ALL THE INFORMATION REQUIRED BY LAW AND THE RULES ISSUED AND PRESCRIBED BY THE DEPARTMENT OF ENVIRONMENTAL PROTECTION.

(SIGNED) David L. Jackson  
R.P.E. \_\_\_\_\_ P.S. 708



STATE OF WEST VIRGINIA  
Division of Environmental Protection  
OFFICE OF OIL AND GAS

DATE February 26, 2018

OPERATOR'S WELL NO. Larry 4  
API WELL NO. \_\_\_\_\_

WELL TYPE: OIL GAS X LIQUID INJECTION WASTE DISPOSAL STATE COUNTY 47 095 02500 H6A  
(IF "GAS") PRODUCTION X STORAGE DEEP SHALLOW X

LOCATION: ELEVATION 738.9' WATER SHED Outlet Middle Island Creek (HUC-10)

DISTRICT Ellsworth COUNTY Tyler

QUADRANGLE Middlebourne 7 1/2' (TH), Shirley 7 1/2' (BH)

SURFACE OWNER Jay Bee Oil & Gas, Inc. ACREAGE 286.03 ac.

OIL & GAS ROYALTY OWNER Ridgetop Capital LP, and Ridgetop Capital II, LP LEASE ACREAGE 286.03 ac.

LEASE NO. RT2

PROPOSED WORK: DRILL X CONVERT DRILL DEEPER REDRILL FRACTURE OR STIMULATE X PLUG OFF OLD FORMATION PERFORATE NEW FORMATION OTHER PHYSICAL CHANGE IN WELL (SPECIFY) \_\_\_\_\_

PLUG AND ABANDON CLEAN OUT AND REPLUG \_\_\_\_\_

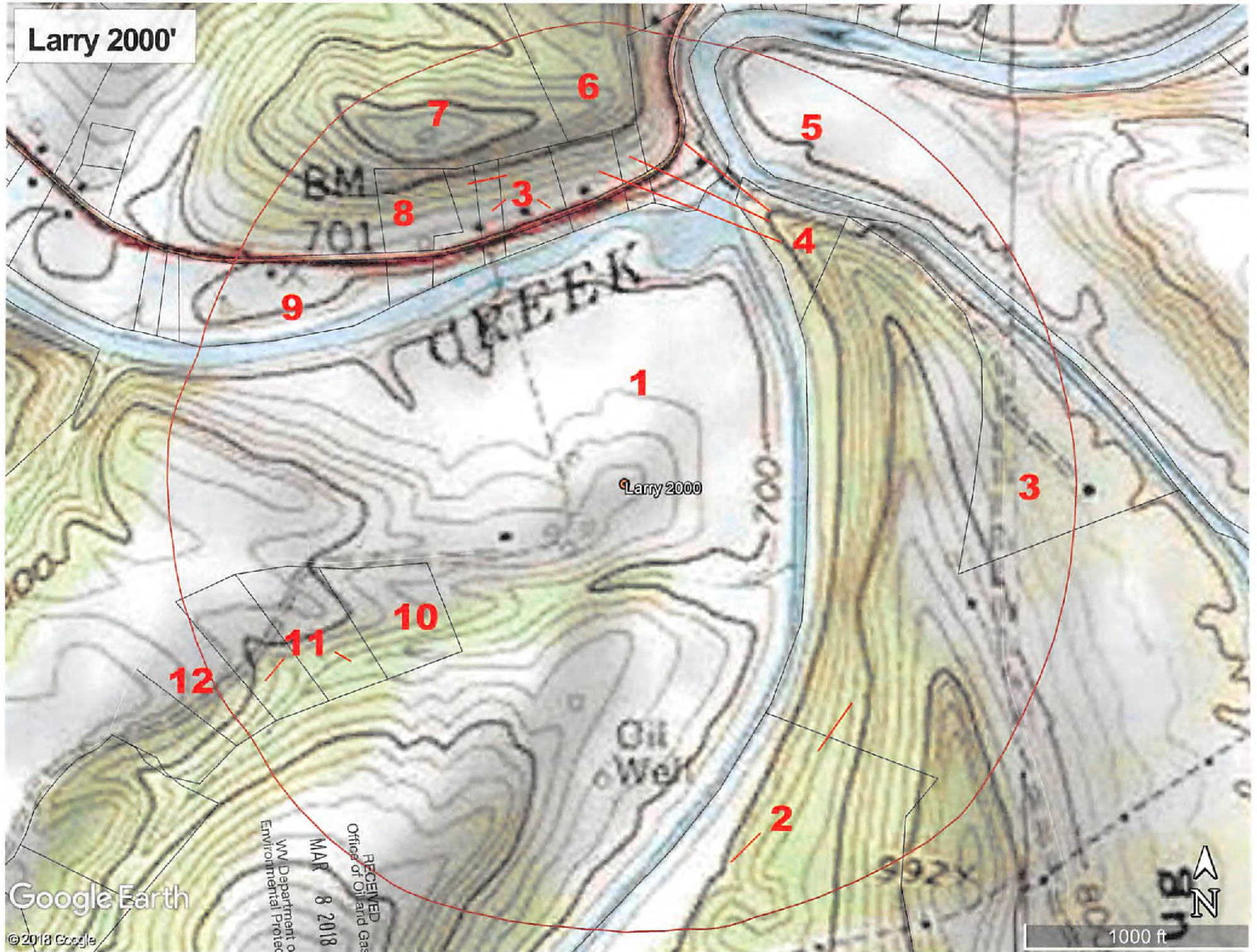
TARGET FORMATION Marcellus ESTIMATED DEPTH TVD = 6,201'; TMD = 15,212'

WELL OPERATOR Jay-Bee Oil & Gas, Inc. DESIGNATED AGENT Randy Broda

ADDRESS 1720 Route 22 E, Union, NJ 07083 ADDRESS 3570 Shields Hill Rd., Cairo, WV 26337

06/01/2018

Larry 2000'



Google Earth

© 2018 Google

RECEIVED  
Office of Oil and Gas  
MAR 8 2018  
WV Department of  
Environmental Protection

1000 ft



95-02500