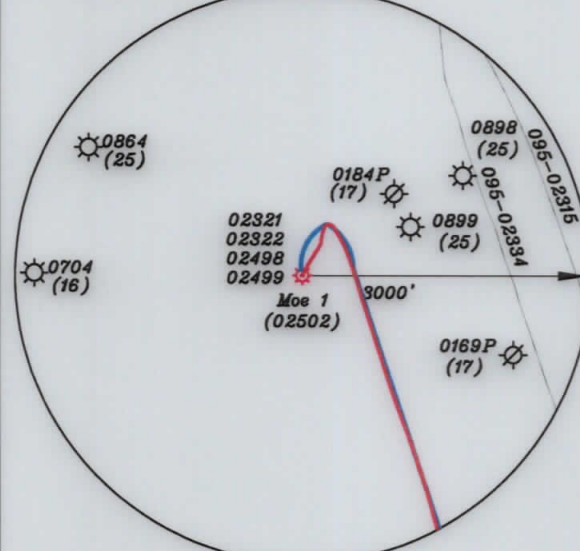
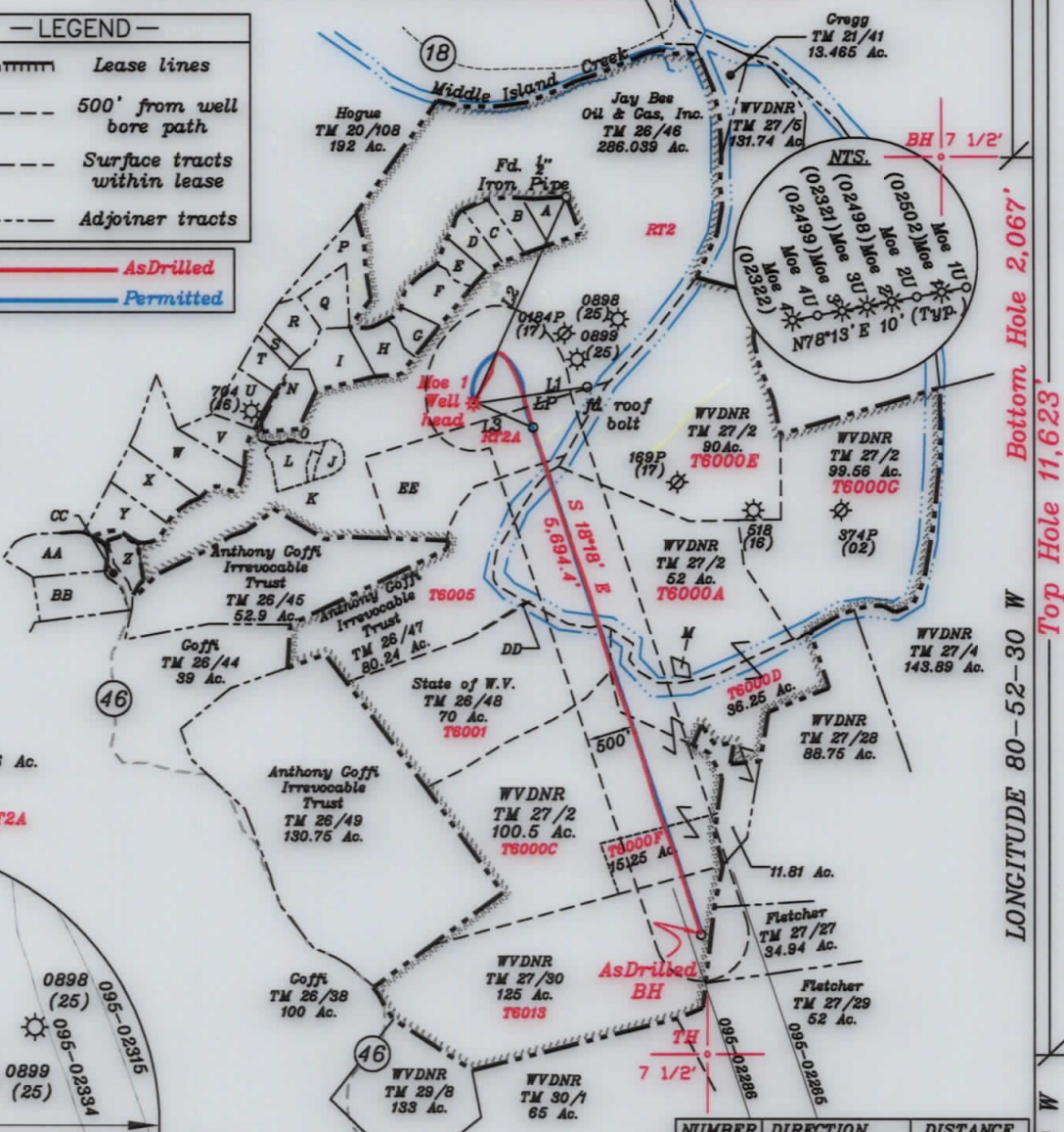


- A-Sulser TM. 20-110 4.412 Ac.
- B-Kelly et al TM. 26-46.18 4.323 Ac.
- C-Kelly et al TM. 26-46.17 4.114 Ac.
- D-Johnson TM. 26-46.23 3.598 Ac.
- E-Johnson TM. 26-46.22 2.92 Ac.
- F-Holliday TM. 26-46.13 5.94 Ac.
- G-Holliday TM. 26-46.12 3.238 Ac.
- H-Kanz TM. 26-46.3 5.4 Ac.
- I-Patera TM. 26-46.7 7.32 Ac.
- J-Peak TM. 26-46.8 2.079 Ac. **DOAN**
- K-Peak TM. 26-46.20 0.652 Ac. **DOAN**
- L-Peak TM. 26-46.19 4.59 Ac. **DOAN**
- M-WVDNR TM. 27-3 4.54 Ac. **WVDNR**
- N-Shrader TM. 26-46.1 5.58 Ac.
- O-Peak TM. 26-46.21 0.22 Ac.
- P-JayBee TM. 26-46.14 8.692 Ac.
- Q-Pittman TM. 26-46.2 5.135 Ac.
- R-Johnson TM. 26-46.9 5 Ac.
- S-Patera TM. 26-46.6 1.702 Ac.
- T-Patera TM. 26-46.15 3.722 Ac.
- U-JayBee TM. 26-46.16 5.094 Ac.
- V-Ison TM. 26-46.10 4.98 Ac.
- W-Doty TM. 26-46.5 13.14 Ac.
- X-Kanz TM. 26-46.4 8.1 Ac.
- Y-Walton TM. 26-46.11 6.43 Ac.
- Z-JayBee TM. 26-46.24 3.059 Ac.
- AA-Palmer TM. 26-19.11 9.40 Ac.
- BB-Westbrook TM. 26-19.4 9.36 Ac.
- CC-JayBee Oil & Gas, Inc. TM. 26-19.9 1.496 Ac.
- DD-Anthony Coffi Irrevocable Trust TM. 27/1 0.24 Ac. **T6035**
- EE-Anthony Coffi TM. 26/46.25 40 Ac. **RT2A**



Notes:

- All wells within 500' of the horizontal leg are shown on this plat based upon information taken from DEP mapping, well plats, & aerial photos.
- Ties to wells and corners are based on State Plane Grid North-WV North Zone NAD 83.
- No water wells were found within 250' of the well location. No dwellings or buildings were found within 625' from the center of the proposed pad. No perennial stream is located within 100' of LOD. No producing trout stream located within 300' of LOD.

NUMBER	DIRECTION	DISTANCE
L1	N81°31' E	1,225.6'
L2	N24°11' E	2,419.6'
L3	S65°18' E	679.6'

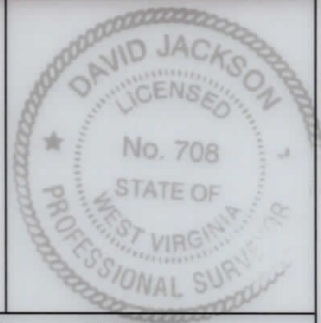
Top Hole - TH
UTM NAD 83(Meters)-4368729.34 N, 509689.55 E
Landing Point - LP
UTM NAD 83(Meters)- 4368741.56 N, 509851.27 E
Bottom Hole - BH
UTM NAD 83(Meters)- 4367018.89 N, 510457.59 E
Top Hole - TH
UTM NAD 83(Meters)-4368728.96 N, 509689.62 E
Landing Point - LP
UTM NAD 83(Meters)- 4368655.61 N, 509883.26 E
Bottom Hole - BH
UTM NAD 83(Meters)- 4367017.56 N, 510455.31 E

(+) DENOTES LOCATION OF WELL ON UNITED STATES TOPOGRAPHIC MAPS

FILE NO. _____
DRAWING NO. 1
SCALE 1" = 2000'
MINIMUM DEGREE OF ACCURACY 1 in 200
PROVEN SOURCE OF ELEVATION GPS
submeter unit

I THE UNDERSIGNED, HEREBY CERTIFY THAT THIS PLAT IS CORRECT TO THE BEST OF MY KNOWLEDGE AND BELIEF AND SHOWS ALL THE INFORMATION REQUIRED BY LAW AND THE RULES ISSUED AND PRESCRIBED BY THE DEPARTMENT OF ENVIRONMENTAL PROTECTION.

(SIGNED) David L Jackson
R.P.E. _____ P.S. 708



STATE OF WEST VIRGINIA
Division of Environmental Protection
OFFICE OF OIL AND GAS

DATE October 02, 2019
OPERATOR'S WELL NO. Moe 1
API WELL NO. _____

WELL TYPE: OIL GAS LIQUID INJECTION X WASTE DISPOSAL _____
(IF 'GAS') PRODUCTION X STORAGE _____ DEEP X SHALLOW _____

LOCATION: ELEVATION 962.0' WATER SHED Outlet Middle Island Cree (HUC-10)
DISTRICT Ellsworth COUNTY Tyler
QUADRANGLE Middlebourne 7 1/2'

SURFACE OWNER Jay Bee Oil & Gas, Inc. ACREAGE 286.03 ac.
OIL & GAS ROYALTY OWNER Ridgetop Capital LP and Ridgetop Capital II, LP LEASE ACREAGE 286.03 ac.
LEASE NO. RT2

PROPOSED WORK: DRILL _____ CONVERT _____ DRILL DEEPER _____ REDRILL _____ FRACTURE OR STIMULATE _____ PLUG OFF OLD FORMATION _____ PERFORATE NEW FORMATION _____ OTHER PHYSICAL CHANGE IN WELL (SPECIFY) As Drilled

PLUG AND ABANDON _____ CLEAN OUT AND REPLUG _____
TARGET FORMATION Marcellus ESTIMATED DEPTH TVD = 6,427' TMD = 12,746'
WELL OPERATOR Jay-Bee Oil & Gas, Inc. DESIGNATED AGENT Randy Broda
ADDRESS 60 Walnut Avenue, Suite 190, Clark, NJ 07066 ADDRESS 3570 Shields Hill Rd., Cairo, WV 26337