

LATITUDE 39°27'30"

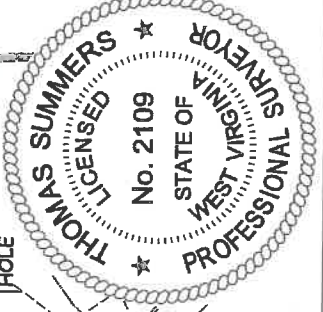
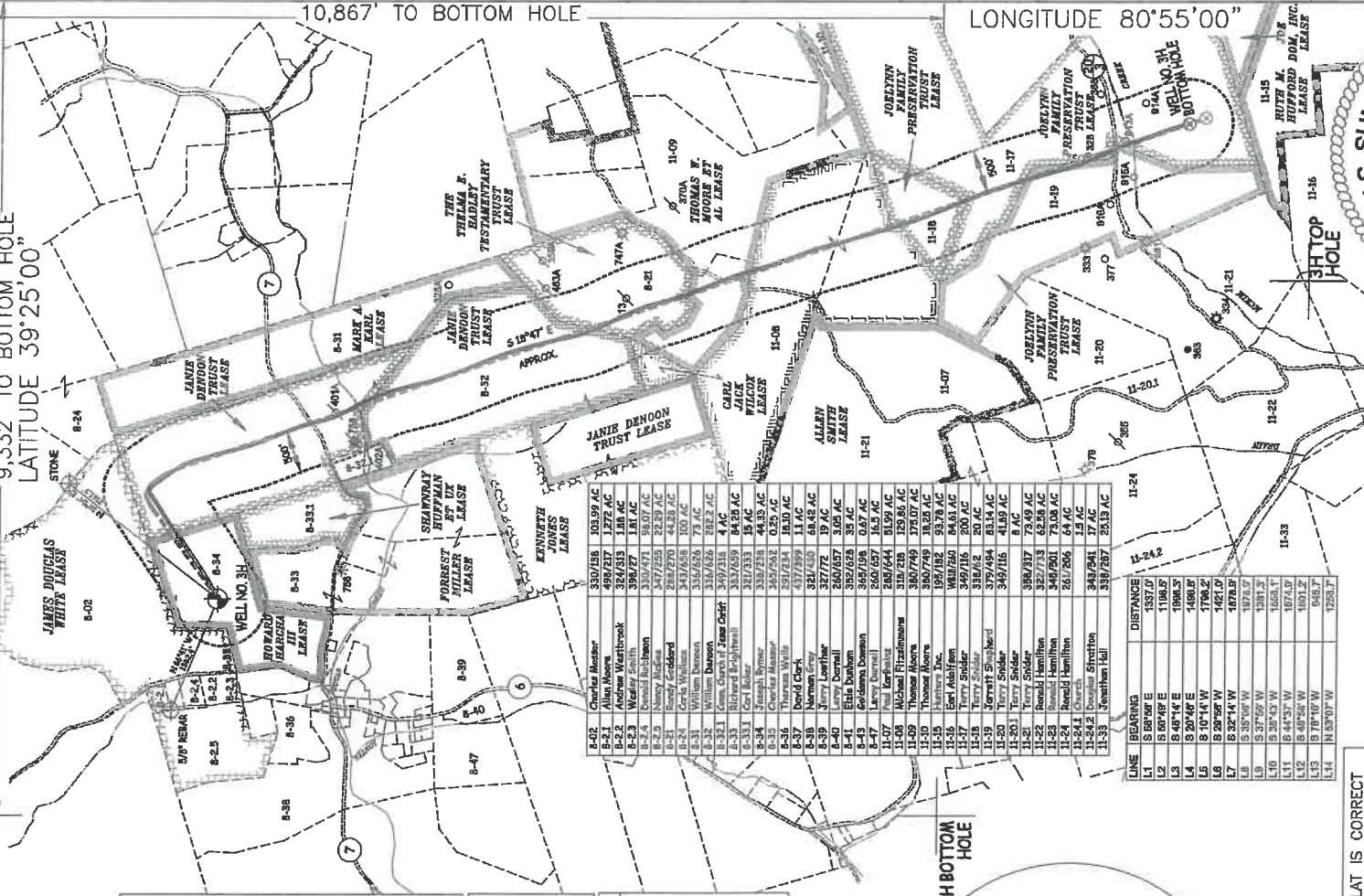
9,332' TO BOTTOM HOLE

LATITUDE 39°25'00"

15,065'

LONGITUDE 80°55'00"

LONGITUDE 80°57'30"

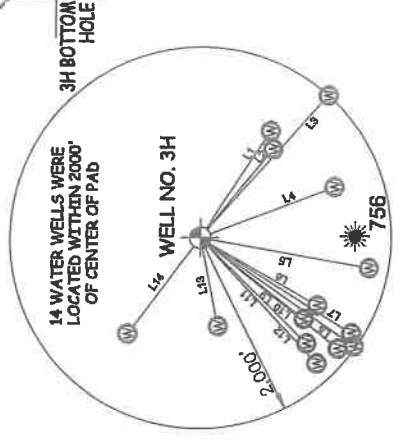
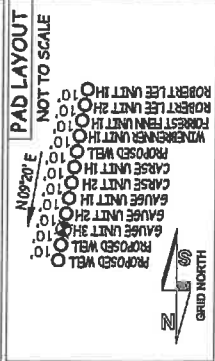


RECEIVED
Office of Oil and Gas
AUG 3 1 2020
WV Department of
Environmental Protection

Antero Resources Corporation
Well No. Gauge Unit 3H

AS DRILLED DATA:
WELL 3H TOP HOLE INFORMATION:
N: 337,376ft E: 1,584,815ft
LAT: 39°25'01.10" LON: 80°58'10.65"
BOTTOM HOLE INFORMATION:
N: 326,308ft E: 1,590,271ft
LAT: 39°23'12.60" LON: 80°56'58.86"
WEST VIRGINIA COORDINATE
SYSTEM OF 1927 NORTH ZONE.
MEASUREMENTS TAKEN WITH
TRIMBLE GEOXT SUBMETER
MAPPING GRADE GPS UNIT.
PLAT ORIENTATION, CORNER,
AND WELL REFERENCE TIE LINES
ARE BASED ON GRID NORTH.

(NAD) 83 (UTM) ZONE 17 COORDS:
WELL 3H TOP HOLE INFORMATION:
N: 4,363,059m E: 502,629m
BOTTOM HOLE INFORMATION:
N: 4,359,715m E: 504,348m



WELL #	OWNER	ACRES	WELL #	OWNER	ACRES
B-02	JAMES DOUGLAS WHITE LEASE	8-02	B-24	STONE	8-24
B-03	ROBERT HARRIS LEASE	8-03	B-25	58" DEEP	8-25
B-04	ROBERT HARRIS LEASE	8-04	B-26	58" DEEP	8-26
B-05	ROBERT HARRIS LEASE	8-05	B-27	58" DEEP	8-27
B-06	ROBERT HARRIS LEASE	8-06	B-28	58" DEEP	8-28
B-07	ROBERT HARRIS LEASE	8-07	B-29	58" DEEP	8-29
B-08	ROBERT HARRIS LEASE	8-08	B-30	58" DEEP	8-30
B-09	ROBERT HARRIS LEASE	8-09	B-31	JANIE DENON TRUST LEASE	8-31
B-10	ROBERT HARRIS LEASE	8-10	B-32	JANIE DENON TRUST LEASE	8-32
B-11	ROBERT HARRIS LEASE	8-11	B-33	JANIE DENON TRUST LEASE	8-33
B-12	ROBERT HARRIS LEASE	8-12	B-34	JANIE DENON TRUST LEASE	8-34
B-13	ROBERT HARRIS LEASE	8-13	B-35	JANIE DENON TRUST LEASE	8-35
B-14	ROBERT HARRIS LEASE	8-14	B-36	JANIE DENON TRUST LEASE	8-36
B-15	ROBERT HARRIS LEASE	8-15	B-37	JANIE DENON TRUST LEASE	8-37
B-16	ROBERT HARRIS LEASE	8-16	B-38	JANIE DENON TRUST LEASE	8-38
B-17	ROBERT HARRIS LEASE	8-17	B-39	JANIE DENON TRUST LEASE	8-39
B-18	ROBERT HARRIS LEASE	8-18	B-40	JANIE DENON TRUST LEASE	8-40
B-19	ROBERT HARRIS LEASE	8-19	B-41	JANIE DENON TRUST LEASE	8-41
B-20	ROBERT HARRIS LEASE	8-20	B-42	JANIE DENON TRUST LEASE	8-42
B-21	ROBERT HARRIS LEASE	8-21	B-43	JANIE DENON TRUST LEASE	8-43
B-22	ROBERT HARRIS LEASE	8-22	B-44	JANIE DENON TRUST LEASE	8-44
B-23	ROBERT HARRIS LEASE	8-23	B-45	JANIE DENON TRUST LEASE	8-45
B-24	ROBERT HARRIS LEASE	8-24	B-46	JANIE DENON TRUST LEASE	8-46
B-25	ROBERT HARRIS LEASE	8-25	B-47	JANIE DENON TRUST LEASE	8-47
B-26	ROBERT HARRIS LEASE	8-26	B-48	JANIE DENON TRUST LEASE	8-48
B-27	ROBERT HARRIS LEASE	8-27	B-49	JANIE DENON TRUST LEASE	8-49
B-28	ROBERT HARRIS LEASE	8-28	B-50	JANIE DENON TRUST LEASE	8-50
B-29	ROBERT HARRIS LEASE	8-29	B-51	JANIE DENON TRUST LEASE	8-51
B-30	ROBERT HARRIS LEASE	8-30	B-52	JANIE DENON TRUST LEASE	8-52
B-31	ROBERT HARRIS LEASE	8-31	B-53	JANIE DENON TRUST LEASE	8-53
B-32	ROBERT HARRIS LEASE	8-32	B-54	JANIE DENON TRUST LEASE	8-54
B-33	ROBERT HARRIS LEASE	8-33	B-55	JANIE DENON TRUST LEASE	8-55
B-34	ROBERT HARRIS LEASE	8-34	B-56	JANIE DENON TRUST LEASE	8-56
B-35	ROBERT HARRIS LEASE	8-35	B-57	JANIE DENON TRUST LEASE	8-57
B-36	ROBERT HARRIS LEASE	8-36	B-58	JANIE DENON TRUST LEASE	8-58
B-37	ROBERT HARRIS LEASE	8-37	B-59	JANIE DENON TRUST LEASE	8-59
B-38	ROBERT HARRIS LEASE	8-38	B-60	JANIE DENON TRUST LEASE	8-60
B-39	ROBERT HARRIS LEASE	8-39	B-61	JANIE DENON TRUST LEASE	8-61
B-40	ROBERT HARRIS LEASE	8-40	B-62	JANIE DENON TRUST LEASE	8-62
B-41	ROBERT HARRIS LEASE	8-41	B-63	JANIE DENON TRUST LEASE	8-63
B-42	ROBERT HARRIS LEASE	8-42	B-64	JANIE DENON TRUST LEASE	8-64
B-43	ROBERT HARRIS LEASE	8-43	B-65	JANIE DENON TRUST LEASE	8-65
B-44	ROBERT HARRIS LEASE	8-44	B-66	JANIE DENON TRUST LEASE	8-66
B-45	ROBERT HARRIS LEASE	8-45	B-67	JANIE DENON TRUST LEASE	8-67
B-46	ROBERT HARRIS LEASE	8-46	B-68	JANIE DENON TRUST LEASE	8-68
B-47	ROBERT HARRIS LEASE	8-47	B-69	JANIE DENON TRUST LEASE	8-69
B-48	ROBERT HARRIS LEASE	8-48	B-70	JANIE DENON TRUST LEASE	8-70
B-49	ROBERT HARRIS LEASE	8-49	B-71	JANIE DENON TRUST LEASE	8-71
B-50	ROBERT HARRIS LEASE	8-50	B-72	JANIE DENON TRUST LEASE	8-72
B-51	ROBERT HARRIS LEASE	8-51	B-73	JANIE DENON TRUST LEASE	8-73
B-52	ROBERT HARRIS LEASE	8-52	B-74	JANIE DENON TRUST LEASE	8-74
B-53	ROBERT HARRIS LEASE	8-53	B-75	JANIE DENON TRUST LEASE	8-75
B-54	ROBERT HARRIS LEASE	8-54	B-76	JANIE DENON TRUST LEASE	8-76
B-55	ROBERT HARRIS LEASE	8-55	B-77	JANIE DENON TRUST LEASE	8-77
B-56	ROBERT HARRIS LEASE	8-56	B-78	JANIE DENON TRUST LEASE	8-78
B-57	ROBERT HARRIS LEASE	8-57	B-79	JANIE DENON TRUST LEASE	8-79
B-58	ROBERT HARRIS LEASE	8-58	B-80	JANIE DENON TRUST LEASE	8-80
B-59	ROBERT HARRIS LEASE	8-59	B-81	JANIE DENON TRUST LEASE	8-81
B-60	ROBERT HARRIS LEASE	8-60	B-82	JANIE DENON TRUST LEASE	8-82
B-61	ROBERT HARRIS LEASE	8-61	B-83	JANIE DENON TRUST LEASE	8-83
B-62	ROBERT HARRIS LEASE	8-62	B-84	JANIE DENON TRUST LEASE	8-84
B-63	ROBERT HARRIS LEASE	8-63	B-85	JANIE DENON TRUST LEASE	8-85
B-64	ROBERT HARRIS LEASE	8-64	B-86	JANIE DENON TRUST LEASE	8-86
B-65	ROBERT HARRIS LEASE	8-65	B-87	JANIE DENON TRUST LEASE	8-87
B-66	ROBERT HARRIS LEASE	8-66	B-88	JANIE DENON TRUST LEASE	8-88
B-67	ROBERT HARRIS LEASE	8-67	B-89	JANIE DENON TRUST LEASE	8-89
B-68	ROBERT HARRIS LEASE	8-68	B-90	JANIE DENON TRUST LEASE	8-90
B-69	ROBERT HARRIS LEASE	8-69	B-91	JANIE DENON TRUST LEASE	8-91
B-70	ROBERT HARRIS LEASE	8-70	B-92	JANIE DENON TRUST LEASE	8-92
B-71	ROBERT HARRIS LEASE	8-71	B-93	JANIE DENON TRUST LEASE	8-93
B-72	ROBERT HARRIS LEASE	8-72	B-94	JANIE DENON TRUST LEASE	8-94
B-73	ROBERT HARRIS LEASE	8-73	B-95	JANIE DENON TRUST LEASE	8-95
B-74	ROBERT HARRIS LEASE	8-74	B-96	JANIE DENON TRUST LEASE	8-96
B-75	ROBERT HARRIS LEASE	8-75	B-97	JANIE DENON TRUST LEASE	8-97
B-76	ROBERT HARRIS LEASE	8-76	B-98	JANIE DENON TRUST LEASE	8-98
B-77	ROBERT HARRIS LEASE	8-77	B-99	JANIE DENON TRUST LEASE	8-99
B-78	ROBERT HARRIS LEASE	8-78	B-100	JANIE DENON TRUST LEASE	8-100

WELL #	BEARING	DISTANCE	WELL #	BEARING	DISTANCE
11	S 89°42' E	137.0'	11-24		
12	S 89°42' E	137.0'	11-24.2		
13	S 89°42' E	137.0'	11-24.2		
14	S 20°42' E	148.8'	11-24.2		
15	S 10°14' W	178.2'	11-24.2		
16	S 20°52' W	147.0'	11-24.2		
17	S 32°14' W	172.0'	11-24.2		
18	S 37°52' W	131.3'	11-24.2		
19	S 39°43' W	107.1'	11-24.2		
20	S 44°31' W	163.0'	11-24.2		
21	S 49°52' W	180.2'	11-24.2		
22	S 79°10' W	94.8'	11-24.2		
23	S 83°07' W	125.0'	11-24.2		

I, THE UNDERSIGNED, HEREBY CERTIFY THAT THIS PLAN IS CORRECT TO THE BEST OF MY KNOWLEDGE AND BELIEF AND SHOWS ALL THE INFORMATION REQUIRED BY LAW AND THE RULES ISSUED AND PRESCRIBED BY THE DEPARTMENT OF ENVIRONMENTAL PROTECTION.

STATE OF WEST VIRGINIA, DIVISION OF ENVIRONMENTAL PROTECTION, OFFICE OF OIL AND GAS
WILLOW LAND SURVEYING PLLC
220 MASONIC AVE. PENNSBORO WEST VIRGINIA 26415



JOB # 17-023WA
DRAWING # GAUGERHAD
SCALE 1" = 2000'
MINIMUM DEGREE OF ACCURACY SUBMETER
PROVEN SOURCE OF ELEV. SUBMETER MAPPING GRADE GPS
STATE OF WEST VIRGINIA DEPARTMENT OF ENERGY DIVISION OF OIL AND GAS

LEGEND
--- Surface Owner Boundary Lines +/-
--- Interior Surface Tracts +/-
--- Proposed Well Path
--- As Drilled Well Path

NOTES
1. NO OCCUPIED DWELLINGS OR BUILDINGS TWO THOUSAND FIVE HUNDRED (2,500) SQUARE FEET OR LARGER USED TO HOUSE OR SHELTER DAIRY CATTLE OR POULTRY. HUSBANDRY ARE LOCATED WITHIN SIX HUNDRED TWENTY-FIVE (625) FEET OF THE CENTER OF THE WELL PAD.
2. TOP HOLE DATA SHOWN HEREON WAS PROVIDED BY RESOURCES CORPORATION.
3. AS DRILLED DATA WAS PROVIDED BY ANTERO RESOURCES CORPORATION.
4. WLS IS NOT CERTIFYING THE DATA AND INFORMATION PROVIDED LISTED IN NOTES 2 AND 3, ONLY THE RELATIONSHIP TO THE LEASE BOUNDARIES.
5. WLS IS BY NO MEANS RESPONSIBLE FOR ANY ERRORS OR INACCURACIES WITH THE DATA AND INFORMATION THAT HAS BEEN PROVIDED.

WELL TYPE: OIL GAS X LIQUID INJECTION WASTE DISPOSAL
(IF "GAS") PRODUCTION X STORAGE DEEP X SHALLOW X
LOCATION: ELEVATION 985' AS BUILT WATERSHED OUTLET MIDDLE ISLAND CREEK DISTRICT MEADE COUNTY TYLER ACREAGE 44.33 ACRES +/- LEASE ACREAGE 44.33 AC ± 88.2 AC ± 85.3 AC ± 44.28 AC ± 109.11 AC ± 129.86 AC ± 20AC ± 200 AC ± 88.14 AC ±
SURFACE OWNER JOSEPH R. RYMER JR.
OIL & GAS ROYALTY OWNER HOWARD HARCHA III; JANIE DENON TRUST; JANIE DENON TRUST;
THE THELMA E. HADLEY TESTAMENTARY TRUST; THOMAS W. MOORE ET AL; CARL JACK WILCOX;
JOE LYNN FAMILY PRESERVATION TRUST; JOE LYNN FAMILY PRESERVATION TRUST; JOE LYNN FAMILY PRESERVATION TRUST
PROPOSED WORK: DRILL CONVERT DRILL DEEPER REDRILL FRACTURE OR STIMULATE
PLUG OFF OLD FORMATION PERFORATE NEW FORMATION OTHER PHYSICAL CHANGE IN WELL CLEAN OUT & REPLUG
(SPECIFY AS DRILLED) AS DRILLED PERFORATE NEW FORMATION PLUG & ABANDON ESTIMATED DEPTH 6,320' TVD 18,769' MD
TARGET FORMATION MARCELLUS
WELL OPERATOR ANTERO RESOURCES CORP. DESIGNATED AGENT DIANNA STAMPER - CT CORPORATION SYSTEM
ADDRESS 1615 WYNKOOP ST. ADDRESS 5400 D BIG TYLER ROAD CHARLESTON, WV 25313
FORM WW-6 DENVER, CO 80202