



ANTERO RESOURCES CORPORATION

Location: Tyler County, WV
 Field: Tyler
 Facility: Gorrell Pad

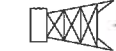
Slot: Slot #04
 Well: Wick Unit 3H
 Wellbore: Wick Unit 3H PWB



Plot reference wellbore is Wick Unit 3H PWP Rev-B.0
 True vertical depths are referenced to H&P 510 (RB)
 Measured depths are referenced to H&P 510 (RB)
 H&P 510 (RB) to Mean Sea Level: 1075 Feet
 Mean Sea Level to Ground level (At Slot Slot #04): -1045 feet
 Coordinates are in feet referenced to Slot

Location Information			
Facility Name	Grid East (US ft)	Grid North (US ft)	Longitude
Gorrell Pad	1643134.326	14314301.475	80°59'25.388"W
Slot	Local E (ft)	Local N (US ft)	Longitude
Slot #04	20.03	-3.30	80°59'25.400"W
H&P 510 (RB) to Ground level (At Slot Slot #04)	30ft		
Mean Sea Level to Ground level (At Slot Slot #04)	-1045ft		
H&P 510 (RB) to Mean Sea Level	1075ft		

Slot	Well	Wellbore	Wellpath
Slot #04	Wick Unit 3H	Wick Unit 3H AWP	Wick Unit 3H AWP Prof: 16938
Slot #04	Wick Unit 3H	Wick Unit 3H PWB	Wick Unit 3H PWP Rev-B.0



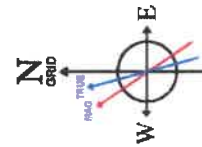
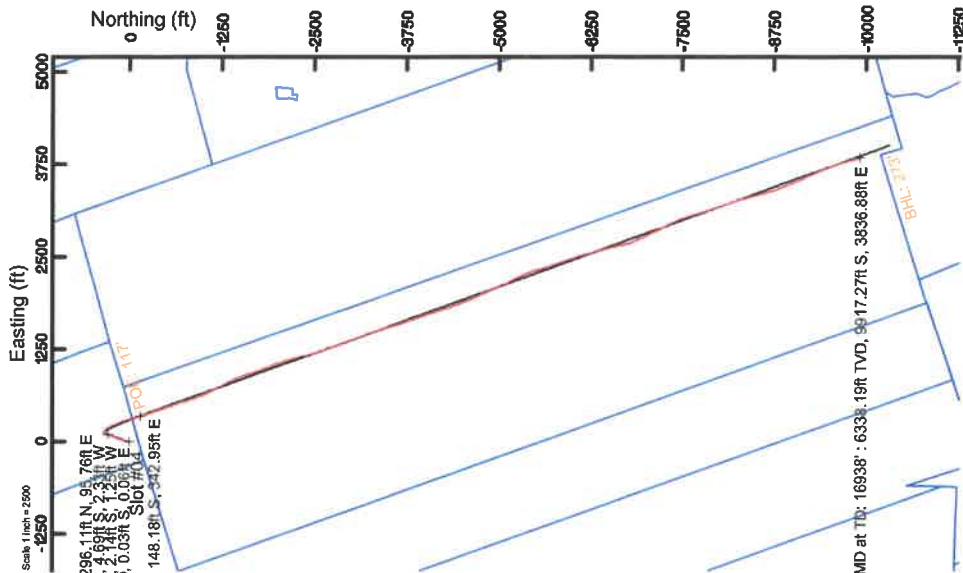
Gyrodatta MS Gyro <17-1/2>(100-613) : 0.11° Inc, 100.00ft MD, 100.00ft TVD, 0.05ft VS

APS EIM <12-1/4>(613)(690-2528) : 0.50° Inc, 690.00ft MD, 689.99ft TVD, 1.59ft VS

Well Profile Data								
Design Comment	MD (ft)	Inc (")	Az (°)	TVD (ft)	Local E (ft)	Local N (ft)	D.L.S. (°/100ft)	VS (ft)
Tie On	2528.00	0.720	238.020	2527.39	-4.25	-1.86	0.22	3.44
Prof. To Bottom	2857.00	0.720	238.020	2856.39	-4.70	-2.40	0.00	3.61
KOP 1	2650.62	0.720	238.020	2650.00	-5.04	-2.96	0.00	3.74
End of Build	3092.45	8.281	18.035	3090.93	23.84	4.51	2.00	-20.80
Curve KOP	5493.70	8.281	18.035	5488.60	352.67	111.57	0.00	-204.07
POE	6466.93	71.252	160.211	6225.00	-83.56	322.83	8.00	187.93
Landing Pt.	6701.27	90.000	160.211	6263.00	-900.16	400.76	8.00	418.12
BHL	17345.00	90.000	160.211	6263.00	-1038.15	4005.26	0.00	11064.84

APS EIM <8-3/4>(2528)(2596-5042) : 0.64° Inc, 2596.00ft MD, 2595.39ft TVD, 3.63ft VS

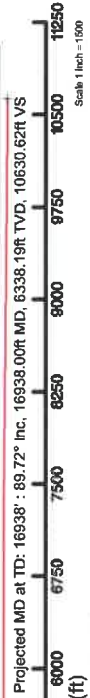
BH AT Curve <8-1/2>(5042)(5082-16913) : 8.36° Inc, 5082.00ft MD, 5059.30ft TVD, -246.20ft VS



User specified (HDGM) Dip: 66.47° Field: 51714.nT
 Magnetic North is 7.81 degrees West of True North (at 6/9/2019)
 Grid North is 0.01 degrees East of True North
 To correct azimuth from True to Grid subtract 0.01 degrees
 To correct azimuth from Magnetic to Grid subtract 7.82 degrees

API: 47-095-02595-0000
 BHI Job #: 109806187A
 Rig: H&P 519
 Duration: 05/06/2019-06/16/2019

Marcellus POE: 6539° MD : 76.34° Inc, 6539.00ft MD, 6242.39ft TVD, 255.54ft VS



Projected MD at TD: 16938 : 89.72° Inc, 16938.00ft MD, 6338.19ft TVD, 10630.62ft VS

Azimuth 160.21° with reference 0.00 N, 0.00 E

Scale 1 inch = 100



Actual Wellpath Report

Wick Unit 3H AWP Proj: 16938'

Page 1 of 10



REFERENCE WELLPATH IDENTIFICATION	
Operator	ANTERO RESOURCES CORPORATION
Area	Tyler County, WV
Field	Tyler
Facility	Gorrell Pad
	Slot #04
	Wick Unit 3H
	Wick Unit 3H AWB

REPORT SETUP INFORMATION	
Projection System	NAD27 / UTM Zone 17 North, US feet
North Reference	Grid
Scale	0.999600
Convergence at slot	0.01° East
	Software System
	User
	Report Generated
	Database/Source file
	WellArchitect® 5.1
	Delaset
	7/1/2019 at 3:29:51 PM
	WA_MPL_EasternUS_DefmWick_Unit_3H_AWP_Proj_16938_.xml

WELLPATH LOCATION			
	Local coordinates		Geographic coordinates
	North [ft]	East [ft]	
Slot Location	20.03	-3.30	
Facility Reference Pt	1643131.03	14314321.50	39°25'06.700"N
Field Reference Pt	1643134.33	14314301.48	39°25'06.502"N
	0.00	0.00	0°00'00.000"
			85°29'19.301"W

WELLPATH DATUM	
Calculation method	H&P 519 (RKB) to Facility Vertical Datum
Horizontal Reference Pt	H&P 519 (RKB) to Mean Sea Level
Vertical Reference Pt	H&P 519 (RKB) to Ground Level at Slot (Slot #04)
MD Reference Pt	Section Origin
Field Vertical Reference	Section Azimuth
	30.00ft
	1075.00ft
	30.00ft
	N 0.00, E 0.00 ft
	160.21°



Actual Wellpath Report

Wick Unit 3H AWP Proj: 16938'
Page 2 of 10



REFERENCE WELLPATH IDENTIFICATION

Operator	ANTERO RESOURCES CORPORATION	Slot	Slot #04
Area	Tyler County, WV	Well	Wick Unit 3H
Field	Tyler	Wellbore	Wick Unit 3H AWB
Facility	Gorrell Pad		

WELLPATH DATA (209 stations) † = interpolated/extrapolated station

MD ft	Inclination °	Azimuth °	TVD ft	Vert Sect ft	North ft	East ft	Grid East (US ft)	Grid North (US ft)	Latitude	Longitude	Closure Dist ft	Closure Dir °	DLS ft/100ft	Build Rate ft/100ft	Turn Rate °/100ft	Comments
0.00	0.000	118.000	0.00	0.00	0.00	0.00	1643131.03	14314321.50	39°25'06.700"N	80°59'25.400"W	0.00	0.000	0.00	0.00	0.00	
30.00	0.000	118.000	30.00	0.00	0.00	0.00	1643131.03	14314321.50	39°25'06.700"N	80°59'25.400"W	0.00	0.000	0.00	0.00	0.00	
100.00	0.110	118.000	100.00	0.05	-0.03	0.06	1643131.09	14314321.47	39°25'06.700"N	80°59'25.399"W	0.07	118.000	0.16	168.57	168.57	Gyrodata MS Gyro <17-1/2">(100'-613')
125.00	0.120	168.160	125.00	0.09	-0.07	0.09	1643131.11	14314321.43	39°25'06.699"N	80°59'25.399"W	0.11	128.547	0.39	0.04	200.64	
150.00	0.070	178.920	150.00	0.13	-0.11	0.09	1643131.12	14314321.39	39°25'06.699"N	80°59'25.399"W	0.14	140.057	0.21	-0.20	43.04	
175.00	0.090	170.190	175.00	0.17	-0.14	0.10	1643131.12	14314321.36	39°25'06.699"N	80°59'25.399"W	0.17	146.525	0.09	0.08	-34.92	
200.00	0.110	194.450	200.00	0.21	-0.19	0.09	1643131.12	14314321.31	39°25'06.698"N	80°59'25.399"W	0.21	153.613	0.19	0.08	97.04	
225.00	0.220	219.750	225.00	0.25	-0.25	0.06	1643131.08	14314320.47	39°25'06.698"N	80°59'25.399"W	0.25	167.240	0.52	0.44	101.20	
250.00	0.280	231.280	250.00	0.30	-0.32	-0.02	1643131.01	14314321.18	39°25'06.697"N	80°59'25.400"W	0.32	183.998	0.31	0.24	46.12	
275.00	0.330	236.240	275.00	0.33	-0.40	-0.13	1643130.90	14314321.01	39°25'06.696"N	80°59'25.400"W	0.42	188.005	0.23	0.20	19.84	
300.00	0.370	232.940	300.00	0.37	-0.49	-0.25	1643130.77	14314321.01	39°25'06.695"N	80°59'25.403"W	0.55	207.490	0.18	0.16	-13.20	
325.00	0.290	228.170	325.00	0.42	-0.58	-0.37	1643130.66	14314320.92	39°25'06.694"N	80°59'25.405"W	0.69	212.264	0.34	-0.32	-19.08	
350.00	0.300	232.320	350.00	0.47	-0.66	-0.46	1643130.56	14314320.84	39°25'06.693"N	80°59'25.406"W	0.81	215.084	0.09	0.04	16.60	
375.00	0.300	226.710	375.00	0.51	-0.75	-0.56	1643130.46	14314320.75	39°25'06.693"N	80°59'25.407"W	0.94	217.079	0.12	0.00	-22.44	
400.00	0.340	229.120	400.00	0.56	-0.84	-0.67	1643130.36	14314320.66	39°25'06.692"N	80°59'25.409"W	1.07	218.490	0.17	0.16	9.64	
425.00	0.350	229.450	425.00	0.62	-0.94	-0.78	1643130.25	14314320.56	39°25'06.691"N	80°59'25.410"W	1.22	219.813	0.04	0.04	1.32	
450.00	0.240	220.610	450.00	0.67	-1.03	-0.87	1643130.15	14314320.47	39°25'06.690"N	80°59'25.411"W	1.35	220.387	0.47	-0.44	-35.36	
475.00	0.120	196.640	475.00	0.72	-1.09	-0.92	1643130.11	14314320.41	39°25'06.689"N	80°59'25.412"W	1.43	219.971	0.56	-0.48	-95.88	
500.00	0.150	199.740	500.00	0.76	-1.15	-0.93	1643130.09	14314320.35	39°25'06.689"N	80°59'25.412"W	1.48	219.132	0.12	0.12	12.40	
525.00	0.280	184.340	525.00	0.85	-1.24	-0.95	1643130.08	14314320.26	39°25'06.688"N	80°59'25.412"W	1.56	217.455	0.56	0.52	-61.60	
550.00	0.310	182.200	550.00	0.96	-1.37	-0.96	1643130.07	14314320.13	39°25'06.686"N	80°59'25.412"W	1.67	214.970	0.13	0.12	-8.56	
575.00	0.230	183.170	575.00	1.07	-1.48	-0.97	1643130.06	14314320.02	39°25'06.685"N	80°59'25.412"W	1.77	213.186	0.38	-0.32	43.88	
600.00	0.350	188.520	600.00	1.18	-1.61	-0.99	1643130.04	14314319.89	39°25'06.684"N	80°59'25.413"W	1.89	211.700	0.49	0.48	-18.60	
613.00	0.300	186.800	613.00	1.24	-1.68	-1.00	1643130.03	14314319.82	39°25'06.683"N	80°59'25.413"W	1.96	210.824	0.39	-0.38	-13.23	
690.00	0.500	220.680	689.99	1.59	-2.14	-1.25	1643129.78	14314319.36	39°25'06.679"N	80°59'25.416"W	2.47	210.255	0.39	0.26	44.00	APS EM <12-1/4">(613')(690'-2528')
751.00	0.580	246.520	750.99	1.74	-2.46	-1.70	1643129.33	14314319.04	39°25'06.676"N	80°59'25.422"W	2.99	214.676	0.42	0.13	42.36	
843.00	0.860	250.320	842.98	1.77	-2.88	-2.78	1643128.25	14314318.62	39°25'06.672"N	80°59'25.435"W	4.00	223.991	0.31	0.30	4.13	
904.00	0.990	254.060	903.98	1.73	-3.18	-3.72	1643127.31	14314318.32	39°25'06.669"N	80°59'25.447"W	4.89	229.470	0.23	0.21	6.13	
994.00	1.050	253.650	993.96	1.63	-3.62	-5.26	1643125.77	14314317.88	39°25'06.664"N	80°59'25.467"W	6.39	235.414	0.07	0.07	-0.46	
1086.00	0.720	18.950	1085.96	1.13	-3.32	-5.88	1643125.15	14314318.19	39°25'06.667"W	80°59'25.475"W	6.75	240.577	1.72	-0.36	136.20	



Actual Wellpath Report

Wick Unit 3H AWP Proj: 16938'
Page 3 of 10



REFERENCE WELLPATH IDENTIFICATION

Operator	ANTERO RESOURCES CORPORATION	Slot	Slot #04
Area	Tyler County, WV	Well	Wick Unit 3H
Field	Tyler	Wellbore	Wick Unit 3H AWB
Facility	Correll Pad		

WELLPATH DATA (209 stations)

MD (ft)	Inclination (°)	Azimuth (°)	TVD (ft)	Vert Sect (ft)	North (ft)	East (ft)	Grid East (US ft)	Grid North (US ft)	Latitude	Longitude	Closure Dist (ft)	Closure Dir (°)	DLS (ft/100ft)	Build Rate (ft/100ft)	Turn Rate (°/100ft)	Comments
1178.00	1.470	52.000	1177.94	0.31	-2.04	-4.76	1643126.27	14314319.46	39°25'06.680"N	80°59'25.461"W	5.18	246.783	1.03	0.82	35.92	
1239.00	2.060	52.910	1238.91	-0.26	-0.90	-3.27	1643127.76	14314320.60	39°25'06.691"N	80°59'25.442"W	3.39	254.623	0.97	0.97	1.49	
1332.00	2.450	52.310	1331.84	-1.37	1.32	-0.36	1643130.67	14314322.82	39°25'06.713"N	80°59'25.405"W	1.37	344.657	0.42	0.42	-0.65	
1427.00	2.790	54.470	1426.74	-2.62	3.91	3.13	1643134.15	14314325.41	39°25'06.739"N	80°59'25.360"W	5.00	38.640	0.37	0.36	2.27	
1521.00	2.250	54.940	1520.65	-3.73	6.30	6.50	1643137.52	14314327.80	39°25'06.762"N	80°59'25.317"W	9.05	45.890	0.57	-0.57	0.50	
1710.00	1.090	60.760	1615.60	-4.97	7.81	8.81	1643139.84	14314329.31	39°25'06.777"N	80°59'25.288"W	11.78	48.446	1.23	-1.22	6.13	
1710.00	0.610	204.220	1709.60	-4.15	7.79	9.39	1643140.41	14314329.29	39°25'06.777"N	80°59'25.280"W	12.20	50.306	1.72	-0.51	152.62	
1805.00	1.640	226.910	1804.58	-3.25	6.40	8.19	1643139.21	14314327.90	39°25'06.763"N	80°59'25.296"W	10.39	51.977	1.16	1.08	23.88	
1899.00	1.570	188.260	1898.55	-1.58	4.21	7.02	1643138.05	14314325.71	39°25'06.742"N	80°59'25.311"W	8.18	59.056	1.13	-0.07	-41.12	
1994.00	2.440	223.690	1993.49	0.47	1.46	5.44	1643136.46	14314322.96	39°25'06.714"N	80°59'25.331"W	5.63	74.984	1.55	0.92	37.23	
2088.00	1.520	228.660	2087.43	1.82	-0.81	3.12	1643134.14	14314320.69	39°25'06.692"N	80°59'25.360"W	3.22	104.604	0.99	-0.98	5.23	
2183.00	0.730	233.450	2182.41	2.46	-2.00	1.69	1643132.71	14314319.50	39°25'06.680"N	80°59'25.379"W	2.62	139.951	0.84	-0.83	5.04	
2278.00	0.580	233.640	2277.41	2.77	-2.65	0.81	1643131.84	14314318.85	39°25'06.674"N	80°59'25.390"W	2.77	162.969	0.16	-0.16	0.20	
2372.00	0.640	245.520	2371.40	2.95	-3.15	-0.05	1643130.98	14314318.35	39°25'06.669"N	80°59'25.401"W	3.15	180.892	0.15	0.06	12.64	
2467.00	0.770	229.370	2466.40	3.22	-3.79	-1.02	1643130.01	14314317.72	39°25'06.663"N	80°59'25.413"W	3.92	195.029	0.25	0.14	-17.00	
2528.00	0.720	239.020	2527.39	3.44	-4.25	-1.66	1643129.37	14314317.25	39°25'06.658"N	80°59'25.421"W	4.56	201.290	0.22	-0.08	15.82	
2596.00	0.640	233.770	2595.39	3.63	-4.69	-2.33	1643128.70	14314316.81	39°25'06.654"N	80°59'25.430"W	5.24	206.385	0.15	-0.12	-7.72	APS EM <8-3/4"> (2528') (2596'-5042')
2660.00	0.520	284.260	2659.38	3.66	-4.93	-2.91	1643128.12	14314316.57	39°25'06.651"N	80°59'25.437"W	5.73	210.495	0.51	-0.19	47.64	
2755.00	4.300	35.660	2754.30	1.53	-2.08	-1.26	1643129.77	14314319.42	39°25'06.679"N	80°59'25.416"W	2.43	211.133	4.91	3.98	138.32	
2851.00	5.990	24.090	2849.91	-4.12	5.42	2.89	1643133.91	14314326.91	39°25'06.754"N	80°59'25.363"W	6.14	28.049	2.06	1.78	-12.05	
2946.00	5.960	14.020	2944.40	-11.79	14.73	6.10	1643137.13	14314336.22	39°25'06.846"N	80°59'25.322"W	15.94	22.513	1.10	-0.03	-10.60	
3041.00	6.490	6.920	3038.84	-20.68	24.84	7.95	1643138.97	14314346.33	39°25'06.946"N	80°59'25.299"W	26.08	17.737	0.98	0.56	-7.47	
3136.00	7.120	10.600	3133.17	-30.56	35.96	9.68	1643140.70	14314357.44	39°25'07.055"N	80°59'25.277"W	37.24	15.060	0.81	0.66	3.87	
3232.00	6.800	10.720	3228.46	-40.59	47.39	11.83	1643142.85	14314368.87	39°25'07.168"N	80°59'25.249"W	48.84	14.013	0.33	-0.33	0.12	
3326.00	6.530	9.330	3321.83	-50.05	58.13	13.73	1643144.75	14314379.61	39°25'07.275"N	80°59'25.225"W	59.73	13.287	0.33	-0.29	-1.48	
3422.00	7.620	16.660	3417.10	-59.94	69.62	16.44	1643147.46	14314391.09	39°25'07.388"N	80°59'25.190"W	71.53	13.286	1.47	1.14	7.64	
3517.00	9.290	21.030	3511.06	-70.81	82.81	21.00	1643152.02	14314404.28	39°25'07.518"N	80°59'25.132"W	85.43	14.227	1.88	1.76	4.60	
3612.00	8.270	13.550	3604.95	-82.32	96.61	25.35	1643156.37	14314418.07	39°25'07.655"N	80°59'25.077"W	99.88	14.702	1.61	-1.07	-7.87	
3710.00	7.500	10.540	3702.02	-93.73	109.75	28.17	1643159.19	14314431.21	39°25'07.785"N	80°59'25.041"W	113.31	14.396	0.89	-0.79	-3.07	
3805.00	7.770	14.870	3796.18	-104.36	122.05	30.95	1643161.97	14314443.50	39°25'07.906"N	80°59'25.005"W	125.92	14.230	0.67	0.28	4.56	



Actual Wellpath Report

Wick Unit 3H AWP Proj: 16938'
Page 4 of 10



REFERENCE WELLPATH IDENTIFICATION

Operator	ANTERO RESOURCES CORPORATION	Slot	Slot #04
Area	Tyler County, WV	Well	Wick Unit 3H
Field	Tyler	Wellbore	Wick Unit 3H AWB
Facility	Correll Pad		

WELLPATH DATA (209 stations) † = interpolated/extrapolated station

MD (ft)	Inclination (°)	Azimuth (°)	TVD (ft)	Vert Sect (ft)	North (ft)	East (ft)	Grid East (US ft)	Grid North (US ft)	Latitude	Longitude	Closure Dist (ft)	Closure Dir (°)	DLS (°/100ft)	Build Rate (°/100ft)	Turn Rate (°/100ft)	Comments
3900.00	9.710	21.090	3890.08	-115.71	135.74	35.48	1643166.50	14314457.18	39°25'08.042"N	80°59'24.948"W	140.30	14.650	2.27	2.04	6.55	
3996.00	10.730	17.560	3984.55	-128.93	151.81	41.09	1643172.11	14314473.25	39°25'08.200"N	80°59'24.876"W	157.27	15.146	1.25	1.06	-3.88	
4091.00	10.120	17.600	4077.98	-142.59	168.20	46.29	1643177.30	14314489.63	39°25'08.362"N	80°59'24.810"W	174.45	15.386	0.64	-0.64	0.04	
4186.00	9.610	24.030	4171.58	-154.95	183.40	52.04	1643183.05	14314504.82	39°25'08.513"N	80°59'24.737"W	190.64	15.841	1.28	-0.54	6.77	
4281.00	8.870	26.160	4265.35	-165.76	197.21	58.50	1643189.50	14314518.63	39°25'08.649"N	80°59'24.654"W	205.71	16.521	0.86	-0.78	2.24	
4376.00	8.500	23.590	4359.26	-175.96	210.22	64.54	1643195.54	14314531.64	39°25'08.778"N	80°59'24.577"W	219.90	17.066	0.56	-0.39	-2.71	
4471.00	7.390	17.310	4453.35	-185.93	222.49	69.16	1643200.12	14314543.90	39°25'08.898"N	80°59'24.518"W	232.99	17.268	1.48	-1.17	-6.61	
4566.00	7.160	21.190	4547.58	-195.27	233.84	73.12	1643204.12	14314556.25	39°25'09.011"N	80°59'24.468"W	245.01	17.364	0.57	-0.24	4.08	
4661.00	7.460	22.960	4641.81	-204.27	245.04	77.67	1643208.66	14314568.44	39°25'09.122"N	80°59'24.410"W	257.05	17.586	0.39	0.32	1.86	
4756.00	7.400	17.780	4736.02	-213.65	256.54	81.94	1643212.94	14314577.94	39°25'09.235"N	80°59'24.356"W	269.31	17.714	0.71	-0.06	-5.45	
4851.00	7.400	16.940	4830.22	-223.40	268.22	85.59	1643216.59	14314589.61	39°25'09.351"N	80°59'24.309"W	281.55	17.698	0.11	0.00	-0.88	
4946.00	6.700	19.380	4924.51	-232.60	279.30	89.21	1643220.21	14314600.69	39°25'09.460"N	80°59'24.263"W	293.20	17.714	0.80	-0.74	2.67	
5042.00	8.060	22.580	5019.71	-241.92	290.80	93.66	1643224.65	14314612.18	39°25'09.574"N	80°59'24.206"W	305.51	17.852	1.48	1.42	3.33	
5082.00	8.360	20.770	5059.30	-246.20	296.11	95.76	1643226.75	14314617.49	39°25'09.628"N	80°59'24.179"W	311.21	17.922	0.99	0.75	-4.53	BH AT Curve <8-1/2"> (5042)-(5082)-16913'
5131.00	7.280	18.060	5107.84	-251.36	302.39	97.99	1643228.98	14314623.77	39°25'09.689"N	80°59'24.151"W	317.87	17.955	2.33	-2.20	-5.53	
5225.00	6.830	19.140	5201.13	-260.41	313.33	101.67	1643232.66	14314634.71	39°25'09.797"N	80°59'24.104"W	329.42	17.977	0.50	-0.48	1.15	
5320.00	7.420	21.370	5295.40	-269.42	324.38	105.76	1643236.74	14314645.75	39°25'09.906"N	80°59'24.052"W	341.19	18.057	0.69	0.62	2.35	
5415.00	7.350	22.110	5389.61	-278.56	335.73	110.28	1643241.26	14314657.09	39°25'10.018"N	80°59'23.994"W	353.37	18.184	0.12	-0.07	0.78	
5510.00	7.000	43.350	5483.88	-285.70	345.57	116.54	1643247.52	14314666.93	39°25'10.115"N	80°59'23.915"W	364.69	18.636	2.80	-0.37	22.36	
5605.00	8.400	77.730	5578.07	-287.41	351.25	127.30	1643258.28	14314672.61	39°25'10.171"N	80°59'23.777"W	373.61	19.921	4.98	1.47	36.19	
5699.00	11.540	117.480	5670.74	-279.59	348.37	142.37	1643273.34	14314669.73	39°25'10.149"N	80°59'23.585"W	376.34	22.229	7.84	3.34	42.29	
5794.00	17.360	139.590	5762.77	-259.31	333.17	160.02	1643290.98	14314654.54	39°25'09.993"N	80°59'23.361"W	369.60	25.654	8.34	6.13	23.27	
5890.00	23.610	148.100	5852.67	-227.07	305.91	179.48	1643310.44	14314627.29	39°25'09.723"N	80°59'23.113"W	354.68	30.401	7.20	6.51	8.86	
5985.00	30.740	152.750	5937.14	-184.34	268.12	200.68	1643331.63	14314589.51	39°25'09.350"N	80°59'22.843"W	334.91	36.814	7.83	7.51	4.89	
6081.00	38.860	156.450	6015.91	-129.86	218.61	223.99	1643354.93	14314540.03	39°25'08.860"N	80°59'22.546"W	312.99	45.696	8.74	8.46	3.85	
6176.00	46.540	159.120	6085.68	-65.55	158.99	248.23	1643379.16	14314480.42	39°25'08.271"N	80°59'22.237"W	294.78	57.361	8.30	8.08	2.81	
6245.00†	53.273	161.053	6130.10	-12.80	109.37	266.15	1643397.07	14314430.83	39°25'07.781"N	80°59'22.009"W	287.75	67.660	9.99	9.76	2.80	Middlesex: 6245 MD
6270.00	55.723	161.670	6144.62	7.54	90.09	272.65	1643403.57	14314411.56	39°25'07.590"N	80°59'21.925"W	287.15	71.715	9.99	9.79	2.47	
6365.00	65.000	163.260	6191.55	89.95	11.43	297.45	1643428.36	14314332.93	39°25'06.813"N	80°59'21.610"W	297.67	87.799	9.88	9.77	1.67	
6412.00	70.180	164.160	6209.46	133.31	-30.26	309.63	1643440.53	14314291.25	39°25'06.401"N	80°59'21.455"W	311.11	95.582	11.16	11.02	1.91	



Actual Wellpath Report

Wick Unit 3H AWP Proj: 16938'
Page 5 of 10



REFERENCE WELLPATH IDENTIFICATION

Operator	ANTERO RESOURCES CORPORATION	Slot	Slot #04
Area	Tyler County, WV	Well	Wick Unit 3H
Field	Tyler	Wellbore	Wick Unit 3H AWB
Facility	Correll Pad		

WELLPATH DATA (209 stations) † = interpolated/extrapolated station

MD (ft)	Inclination (°)	Azimuth (°)	TVD (ft)	Vert Sect (ft)	North (ft)	East (ft)	Grid East (US ft)	Grid North (US ft)	Latitude	Longitude	Closure Dist (ft)	Closure Dir (°)	DLS (°/100ft)	Build Rate (°/100ft)	Turn Rate (°/100ft)	Comments
6437.00	72.26	164.23	6217.51	156.92	-53.04	316.07	1643446.97	14314268.49	39°25'06.175"N	80°59'21.373"W	320.49	99.525	8.33	8.33	0.37	Burkett: 6437' MD
6459.00	74.09	164.33	6223.88	177.92	-73.31	321.77	1643452.67	14314248.22	39°25'05.975"N	80°59'21.300"W	330.02	102.834	8.33	8.33	0.36	Tully: 6459' MD
6461.00	74.26	164.34	6224.42	179.84	-75.16	322.29	1643453.19	14314246.37	39°25'05.957"N	80°59'21.294"W	330.94	103.127	8.33	8.33	0.36	
6508.00	77.47	164.17	6235.90	225.30	-119.02	334.66	1643465.55	14314202.53	39°25'05.235"N	80°59'21.136"W	355.19	109.578	8.34	6.83	-0.36	
6539.00	78.34	164.07	6242.39	255.54	-148.18	342.95	1643473.84	14314173.38	39°25'05.235"N	80°59'21.030"W	373.59	113.367	2.83	2.81	-0.31	Marcellus POE: 6539' MD
6556.00	78.82	164.02	6245.76	272.16	-164.20	347.53	1643478.42	14314157.37	39°25'05.077"N	80°59'20.972"W	384.37	115.289	2.83	2.81	-0.31	
6603.00	78.88	163.25	6254.85	318.19	-208.44	360.52	1643491.41	14314113.14	39°25'04.639"N	80°59'20.870"W	416.44	120.035	1.61	0.13	-1.64	
6651.00	78.88	162.21	6264.11	365.25	-253.42	374.51	1643505.38	14314068.18	39°25'04.195"N	80°59'20.628"W	452.19	124.085	2.13	0.00	-2.17	
6698.00	82.41	161.34	6271.74	411.60	-297.46	389.01	1643519.88	14314024.16	39°25'03.760"N	80°59'20.444"W	489.70	127.403	7.73	7.51	-1.95	
6746.00	86.40	159.33	6276.42	459.36	-342.43	405.08	1643535.95	14313979.21	39°25'03.315"N	80°59'20.239"W	530.43	130.209	9.30	8.31	-4.19	
6842.00	88.24	160.58	6280.91	555.24	-432.51	437.95	1643568.80	14313889.16	39°25'02.425"N	80°59'19.820"W	615.52	134.642	2.32	1.92	1.30	
6937.00	88.28	161.43	6283.80	650.19	-522.29	468.86	1643599.70	14313799.42	39°25'01.537"N	80°59'19.427"W	701.87	138.086	0.90	0.04	0.89	
7032.00	88.34	161.76	6286.60	745.12	-612.40	498.84	1643629.67	14313709.35	39°25'00.647"N	80°59'19.045"W	789.85	140.835	0.35	0.06	0.35	
7127.00	88.43	162.04	6289.28	840.04	-702.66	528.34	1643659.16	14313619.12	39°24'59.755"N	80°59'18.669"W	879.13	143.060	0.31	0.09	0.29	
7222.00	88.74	162.30	6291.62	934.96	-793.07	557.42	1643688.22	14313528.75	39°24'58.861"N	80°59'18.299"W	969.37	144.898	0.43	0.33	0.27	
7318.00	89.91	161.49	6292.75	1030.91	-884.31	587.25	1643718.04	14313437.55	39°24'57.959"N	80°59'17.919"W	1061.54	146.413	1.48	1.22	-0.84	
7413.00	89.91	157.34	6292.90	1125.88	-973.22	620.64	1643751.42	14313348.67	39°24'57.080"N	80°59'17.493"W	1154.28	147.473	4.37	0.00	-4.37	
7508.00	89.85	154.07	6293.10	1220.57	-1059.80	659.73	1643790.49	14313262.13	39°24'56.225"N	80°59'16.996"W	1248.36	148.098	3.44	-0.06	-3.44	
7603.00	89.82	152.81	6293.38	1314.91	-1144.77	702.20	1643832.95	14313177.19	39°24'55.385"N	80°59'16.455"W	1342.98	148.475	1.33	-0.03	-1.33	
7698.00	90.18	152.86	6293.38	1409.12	-1229.29	745.57	1643876.30	14313092.71	39°24'54.549"N	80°59'15.902"W	1437.72	148.763	0.38	0.36	0.05	
7793.00	89.94	153.85	6293.28	1503.44	-1314.20	788.18	1643918.89	14313007.83	39°24'53.710"N	80°59'15.359"W	1532.43	149.047	1.07	-0.25	1.04	
7888.00	89.69	154.17	6293.56	1597.88	-1399.59	829.81	1643960.50	14312922.47	39°24'52.866"N	80°59'14.829"W	1627.09	149.337	0.43	-0.26	0.34	
7984.00	90.18	158.59	6293.69	1693.64	-1487.53	868.26	1643998.94	14312834.57	39°24'51.997"N	80°59'14.339"W	1722.39	149.728	4.63	0.51	4.60	
8079.00	90.15	161.49	6293.42	1788.63	-1576.81	930.13	1644031.36	14312745.32	39°24'51.114"N	80°59'13.926"W	1815.92	150.265	3.05	-0.03	3.05	
8174.00	90.15	162.40	6293.17	1883.59	-1667.13	930.13	1644060.79	14312655.04	39°24'50.222"N	80°59'13.551"W	1909.05	150.842	0.96	0.00	0.96	
8270.00	89.97	160.73	6293.07	1979.56	-1758.20	960.49	1644091.13	14312564.01	39°24'49.322"N	80°59'13.165"W	2003.45	151.353	1.75	-0.19	-1.74	
8365.00	89.57	159.09	6293.45	2074.55	-1847.42	993.12	1644123.75	14312474.83	39°24'48.440"N	80°59'12.749"W	2097.44	151.739	1.78	-0.42	-1.73	
8460.00	89.60	157.82	6294.14	2169.50	-1935.78	1028.00	1644158.62	14312386.50	39°24'47.566"N	80°59'12.305"W	2191.81	152.029	1.34	0.03	-1.34	
8555.00	89.82	158.74	6294.62	2264.45	-2024.03	1063.16	1644193.76	14312298.29	39°24'46.894"N	80°59'11.867"W	2286.26	152.288	1.00	0.22	0.87	
8650.00	90.12	163.30	6294.67	2359.41	-2113.84	1094.05	1644224.64	14312208.51	39°24'45.806"N	80°59'11.464"W	2380.18	152.635	4.81	0.32	4.80	



Actual Wellpath Report

Wick Unit 3H AWP Proj: 16938'

Page 6 of 10



REFERENCE WELLPATH IDENTIFICATION

Operator	Slot	Slot #04
ANTERO RESOURCES CORPORATION	Well	Wick Unit 3H
Tyler County, WV	Wellbore	Wick Unit 3H AWB
Tyler		
Correll Pad		

WELLPATH DATA (209 stations)

MD (ft)	Inclination (°)	Azimuth (°)	TVD (ft)	Vert Sect (ft)	North (ft)	East (ft)	Grid East (US ft)	Grid North (US ft)	Latitude	Longitude	Closure Dist (ft)	Closure Dir (°)	DLS (ft/100ft)	Build Rate (ft/100ft)	Turn Rate (ft/100ft)	Comments
8745.00	90.090	165.270	6294.49	2454.17	-2205.28	1119.78	1644250.36	14312117.10	39°24'44.903"N	80°59'11.136"W	2473.29	153.080	2.07	-0.03	2.07	
8840.00	90.120	166.150	6294.32	2548.73	-2297.34	1143.23	1644273.80	14312025.08	39°24'43.993"N	80°59'10.838"W	2566.08	153.544	0.93	0.03	0.93	
8935.00	90.000	166.490	6294.22	2643.19	-2389.65	1165.70	1644296.26	14311932.81	39°24'43.080"N	80°59'10.551"W	2658.81	153.986	0.38	-0.13	0.36	
9030.00	89.940	165.870	6294.27	2737.67	-2481.90	1188.39	1644318.94	14311840.60	39°24'42.169"N	80°59'10.263"W	2751.74	154.414	0.66	-0.06	-0.65	
9125.00	89.820	161.140	6294.47	2832.49	-2572.96	1215.35	1644345.89	14311749.57	39°24'41.269"N	80°59'09.919"W	2845.56	154.716	4.98	-0.13	-4.98	
9221.00	89.910	158.850	6294.70	2928.48	-2663.16	1248.19	1644378.72	14311659.41	39°24'40.377"N	80°59'09.501"W	2941.16	154.888	2.39	0.09	-2.39	
9315.00	89.910	159.380	6294.84	3022.46	-2750.99	1281.70	1644412.22	14311571.62	39°24'39.509"N	80°59'09.074"W	3034.91	155.019	0.56	0.00	0.56	
9410.00	89.780	159.810	6295.10	3117.46	-2840.03	1314.83	1644445.33	14311482.62	39°24'38.629"N	80°59'08.652"W	3129.82	155.158	0.47	-0.14	0.45	
9506.00	90.000	159.860	6295.28	3213.46	-2930.14	1347.92	1644478.41	14311392.54	39°24'37.738"N	80°59'08.231"W	3225.31	155.297	0.24	0.23	0.05	
9601.00	89.820	159.470	6295.43	3308.45	-3019.22	1380.93	1644511.41	14311303.49	39°24'36.858"N	80°59'07.811"W	3320.04	155.422	0.45	-0.19	-0.41	
9696.00	89.880	159.280	6295.68	3403.44	-3108.13	1414.40	1644544.86	14311214.62	39°24'35.979"N	80°59'07.384"W	3414.82	155.531	0.21	0.06	-0.20	
9792.00	89.970	159.240	6295.81	3499.43	-3197.91	1448.39	1644578.84	14311124.88	39°24'35.092"N	80°59'06.951"W	3510.82	155.633	0.10	0.09	-0.04	
9887.00	89.750	161.110	6296.04	3594.42	-3287.27	1480.61	1644611.04	14311035.55	39°24'34.208"N	80°59'06.541"W	3605.33	155.753	1.98	-0.23	1.97	
9982.00	89.660	163.320	6296.53	3689.36	-3377.73	1509.62	1644640.05	14310945.13	39°24'33.314"N	80°59'06.172"W	3699.73	155.918	2.33	-0.09	2.33	
10077.00	89.350	164.350	6297.35	3784.16	-3468.97	1536.07	1644666.48	14310853.93	39°24'32.412"N	80°59'05.835"W	3793.84	156.116	1.13	-0.33	1.08	
10172.00	89.320	163.230	6298.45	3878.97	-3560.18	1562.59	1644692.99	14310762.75	39°24'31.511"N	80°59'05.497"W	3888.01	156.303	1.18	-0.03	-1.18	
10267.00	89.570	162.320	6299.37	3973.87	-3650.92	1590.72	1644721.11	14310672.05	39°24'30.614"N	80°59'05.139"W	3982.41	156.457	0.99	0.26	-0.96	
10362.00	89.450	160.570	6300.19	4068.84	-3740.97	1620.95	1644751.32	14310582.03	39°24'29.724"N	80°59'04.754"W	4077.05	156.573	1.85	-0.13	-1.84	
10457.00	89.690	161.800	6300.90	4163.82	-3830.89	1651.59	1644781.95	14310492.15	39°24'28.835"N	80°59'04.364"W	4171.75	156.678	1.32	0.25	1.29	
10551.00	89.830	160.160	6301.46	4257.81	-3919.75	1682.22	1644812.57	14310403.32	39°24'27.957"N	80°59'03.974"W	4265.48	156.773	1.75	-0.06	-1.74	
10646.00	89.750	160.330	6301.97	4352.81	-4009.16	1714.33	1644844.67	14310313.95	39°24'27.073"N	80°59'03.565"W	4360.31	156.848	0.22	0.13	0.18	
10741.00	90.060	163.170	6302.13	4447.76	-4099.37	1744.07	1644874.40	14310223.77	39°24'26.181"N	80°59'03.186"W	4454.96	156.953	3.01	0.33	2.99	
10836.00	89.750	162.570	6302.29	4542.66	-4190.16	1772.06	1644902.37	14310133.03	39°24'25.284"N	80°59'02.830"W	4549.46	157.076	0.71	-0.33	-0.63	
10931.00	89.720	162.120	6302.73	4637.59	-4280.68	1800.87	1644931.17	14310042.54	39°24'24.389"N	80°59'02.463"W	4644.07	157.184	0.47	-0.03	-0.47	
11026.00	89.910	161.700	6303.03	4732.55	-4370.99	1830.37	1644960.66	14309952.27	39°24'23.497"N	80°59'02.088"W	4738.75	157.278	0.49	0.20	-0.44	
11121.00	90.180	159.530	6302.96	4827.54	-4460.60	1861.90	1644992.18	14309862.70	39°24'22.611"N	80°59'01.686"W	4833.59	157.344	2.30	0.28	-2.28	
11215.00	90.250	159.250	6302.60	4921.53	-4548.58	1894.98	1645025.25	14309774.75	39°24'21.741"N	80°59'01.265"W	4927.53	157.383	0.31	0.07	-0.30	
11309.00	90.120	155.210	6302.30	5015.38	-4635.23	1931.36	1645061.61	14309688.13	39°24'20.885"N	80°59'00.802"W	5021.51	157.380	4.30	-0.14	-4.30	
11403.00	89.510	154.440	6302.60	5108.97	-4720.30	1971.34	1645101.58	14309603.09	39°24'20.044"N	80°59'00.292"W	5115.41	157.333	1.05	-0.65	-0.82	
11498.00	89.720	156.760	6303.24	5203.65	-4806.81	2010.98	1645140.80	14309516.62	39°24'19.189"N	80°58'59.793"W	5210.36	157.302	2.45	0.22	2.44	



Actual Wellpath Report

Wick Unit 3H AWP Proj: 16938'
Page 7 of 10



REFERENCE WELLPATH IDENTIFICATION

Operator	ANTERO RESOURCES CORPORATION	Slot	Slot #04
Area	Tyler County, WV	Well	Wick Unit 3H
Field	Tyler	Wellbore	Wick Unit 3H AWB
Facility	Correll Pad		

WELLPATH DATA (209 stations)

MD (ft)	Inclination (°)	Azimuth (°)	TVD (ft)	Vert Sect (ft)	North (ft)	East (ft)	Grid East (US ft)	Grid North (US ft)	Latitude	Longitude	Closure Dist (ft)	Closure Dir (°)	DLS (F/100ft)	Build Rate (F/100ft)	Turn Rate (F/100ft)	Comments
11592.00	89.320	156.870	6304.03	5297.48	-4993.22	2047.59	1645177.80	14309430.25	39°24'18.335"N	80°58'59.321"W	5304.36	157.293	0.44	-0.43	0.12	
11687.00	89.570	156.310	6304.95	5392.29	-4980.39	2085.33	1645215.52	14309343.11	39°24'17.473"N	80°58'58.841"W	5399.34	157.281	0.65	0.26	-0.59	
11781.00	89.850	156.070	6305.43	5486.06	-5066.39	2123.28	1645253.46	14309257.15	39°24'16.623"N	80°58'58.358"W	5493.33	157.262	0.39	0.30	-0.26	
11876.00	89.910	154.430	6305.63	5580.70	-5152.66	2163.05	1645293.21	14309170.91	39°24'15.770"N	80°58'57.851"W	5588.27	157.228	1.73	0.06	-1.73	
11970.00	89.600	153.240	6306.03	5674.11	-5237.03	2204.50	1645334.64	14309086.58	39°24'14.937"N	80°58'57.323"W	5682.10	157.172	1.31	-0.33	-1.27	
12064.00	89.450	155.440	6306.81	5767.61	-5321.75	2245.20	1645375.33	14309001.89	39°24'14.099"N	80°58'56.805"W	5775.98	157.126	2.35	-0.16	2.34	
12160.00	90.090	159.400	6307.19	5863.48	-5410.37	2282.06	1645412.17	14308913.31	39°24'13.223"N	80°58'56.336"W	5871.96	157.130	4.18	0.67	4.12	
12254.00	89.880	163.010	6307.22	5957.45	-5499.34	2312.34	1645442.43	14308824.37	39°24'12.344"N	80°58'55.950"W	5965.71	157.194	3.85	-0.22	3.84	
12348.00	90.120	163.400	6307.22	6051.32	-5589.33	2339.50	1645469.58	14308734.41	39°24'11.454"N	80°58'55.605"W	6059.20	157.288	0.49	0.26	0.41	
12443.00	90.090	162.190	6307.04	6146.22	-5680.08	2367.60	1645497.67	14308643.70	39°24'10.557"N	80°58'55.247"W	6153.76	157.372	1.27	-0.03	-1.27	
12537.00	90.220	162.000	6306.79	6240.17	-5769.53	2396.50	1645526.56	14308554.29	39°24'09.673"N	80°58'54.879"W	6247.45	157.443	0.24	0.14	-0.20	
12632.00	90.250	160.850	6306.40	6335.14	-5859.58	2426.76	1645556.81	14308464.28	39°24'08.783"N	80°58'54.494"W	6342.22	157.503	1.21	0.03	-1.21	
12727.00	89.750	161.140	6306.40	6430.14	-5949.40	2457.69	1645587.73	14308374.49	39°24'07.895"N	80°58'54.100"W	6437.05	157.555	0.61	-0.53	0.31	
12822.00	89.750	162.000	6306.81	6525.11	-6039.52	2487.73	1645617.76	14308284.41	39°24'07.004"N	80°58'53.717"W	6531.92	157.613	0.91	0.00	0.91	
12916.00	89.850	164.000	6307.14	6618.99	-6129.41	2515.21	1645645.23	14308194.55	39°24'06.116"N	80°58'53.368"W	6625.40	157.689	2.13	0.11	2.13	
13011.00	89.780	165.960	6307.45	6713.66	-6221.16	2539.83	1645669.83	14308102.84	39°24'05.209"N	80°58'53.054"W	6719.64	157.792	2.06	-0.07	2.06	
13105.00	89.780	164.350	6307.81	6807.30	-6312.02	2563.91	1645693.91	14308012.02	39°24'04.311"N	80°58'52.748"W	6812.87	157.893	1.71	0.00	-1.71	
13200.00	89.720	163.370	6308.22	6902.11	-6403.27	2590.32	1645720.30	14307920.80	39°24'03.409"N	80°58'52.411"W	6907.36	157.975	1.03	-0.06	-1.03	
13295.00	89.720	166.300	6308.69	6996.79	-6494.95	2615.17	1645745.14	14307829.16	39°24'02.503"N	80°58'52.095"W	7001.68	158.068	3.08	0.00	3.08	
13389.00	89.690	167.690	6309.17	7090.12	-6586.54	2636.32	1645766.29	14307737.61	39°24'01.598"N	80°58'51.826"W	7094.55	158.186	1.48	-0.03	1.48	
13483.00	90.460	166.960	6309.05	7183.40	-6678.25	2656.94	1645786.90	14307645.94	39°24'00.691"N	80°58'51.563"W	7187.37	158.305	1.13	0.82	-0.78	
13577.00	90.580	162.080	6308.20	7277.10	-6768.81	2682.02	1645811.97	14307555.42	39°23'59.796"N	80°58'51.244"W	7280.79	158.385	5.19	0.13	-5.19	
13671.00	89.690	157.380	6307.97	7371.07	-6856.96	2714.58	1645844.52	14307467.30	39°23'58.925"N	80°58'50.830"W	7374.74	158.402	5.09	-0.95	-5.00	
13765.00	89.260	154.660	6308.84	7464.81	-6942.83	2752.78	1645882.70	14307381.46	39°23'58.076"N	80°58'50.343"W	7468.65	158.372	2.93	-0.46	-2.89	
13858.00	89.380	153.460	6309.94	7557.26	-7026.46	2793.46	1645923.36	14307297.87	39°23'57.249"N	80°58'49.825"W	7561.38	158.319	1.30	0.13	-1.29	
13951.00	89.260	154.900	6311.04	7649.74	-7110.16	2833.96	1645963.85	14307214.20	39°23'56.422"N	80°58'49.310"W	7654.13	158.269	1.55	-0.13	1.55	
14045.00	89.350	155.140	6312.18	7743.35	-7195.36	2873.65	1646003.52	14307129.03	39°23'55.580"N	80°58'48.804"W	7747.98	158.229	0.27	0.10	0.26	
14139.00	89.510	152.940	6313.12	7836.79	-7279.87	2914.79	1646044.65	14307044.66	39°23'54.745"N	80°58'48.281"W	7841.72	158.179	2.35	0.17	-2.34	
14233.00	89.170	154.200	6314.20	7930.15	-7364.04	2956.63	1646086.47	14306960.42	39°23'53.913"N	80°58'47.748"W	7935.41	158.125	1.39	-0.36	1.34	
14326.00	89.170	158.250	6315.55	8022.90	-7449.12	2994.11	1646123.94	14306875.38	39°23'53.072"N	80°58'47.271"W	8028.33	158.103	4.35	0.00	4.35	



Actual Wellpath Report

Wick Unit 3H AWP Proj: 16938'

Page 8 of 10



REFERENCE WELLPATH IDENTIFICATION

Operator	Antero Resources Corporation	Slot	Slot #04
Area	Tyler County, WV	Well	Wick Unit 3H
Field	Tyler	Wellbore	Wick Unit 3H AWB
Facility	Gorrell Pad		

WELLPATH DATA (209 stations)

MD (ft)	Inclination (°)	Azimuth (°)	TVD (ft)	Vert Sect (ft)	North (ft)	East (ft)	Grid East (US ft)	Grid North (US ft)	Latitude	Longitude	Closure Dist (ft)	Closure Dir (°)	DLS (°/100ft)	Build Rate (ft/100ft)	Turn Rate (°/100ft)	Comments
14420.00	89.380	161.520	6316.74	8116.88	-7537.37	3026.43	1646156.24	14306787.16	39°23'52.199"N	80°58'46.859"W	8122.26	158.123	3.49	0.22	3.48	
14514.00	89.540	163.460	6317.62	8210.79	-7627.00	3054.71	1646184.51	14306897.56	39°23'51.313"N	80°58'46.499"W	8215.98	158.173	2.07	0.17	2.06	
14608.00	89.480	163.570	6318.43	8304.63	-7717.13	3081.38	1646211.17	14306607.47	39°23'50.422"N	80°58'46.160"W	8309.58	158.234	0.13	-0.06	0.12	
14702.00	89.510	161.200	6319.26	8398.56	-7806.72	3109.83	1646239.60	14306651.92	39°23'49.537"N	80°58'45.798"W	8403.32	158.280	2.52	0.03	-2.52	
14796.00	89.420	161.270	6320.13	8492.54	-7895.72	3140.06	1646269.83	14306428.96	39°23'48.657"N	80°58'45.413"W	8497.20	158.313	0.12	-0.10	0.07	
14890.00	89.450	161.880	6321.06	8586.51	-7984.89	3169.77	1646299.53	14306339.82	39°23'47.776"N	80°58'45.035"W	8591.04	158.348	0.65	0.03	0.65	
14984.00	89.540	161.420	6321.89	8680.47	-8074.11	3198.36	1646329.11	14306250.64	39°23'46.894"N	80°58'44.638"W	8684.88	158.384	0.10	-0.43	-0.43	
15079.00	89.510	161.110	6322.68	8775.45	-8164.07	3229.88	1646359.61	14306160.71	39°23'46.005"N	80°58'44.270"W	8779.76	158.415	0.33	-0.03	-0.33	
15173.00	89.420	162.310	6323.56	8869.41	-8253.32	3259.37	1646389.09	14306071.50	39°23'45.123"N	80°58'43.894"W	8873.60	158.450	1.28	-0.10	1.28	
15267.00	89.510	164.130	6324.43	8963.28	-8343.31	3288.51	1646416.22	14305981.55	39°23'44.233"N	80°58'43.549"W	8967.27	158.500	1.94	0.10	1.94	
15362.00	89.350	166.020	6325.38	9057.33	-8435.09	3310.97	1646440.67	14305889.80	39°23'43.326"N	80°58'43.237"W	9061.64	158.569	2.00	-0.17	1.99	
15456.00	89.480	165.850	6326.34	9151.45	-8526.27	3333.82	1646463.51	14305798.66	39°23'42.425"N	80°58'42.947"W	9154.87	158.644	0.23	0.14	-0.18	
15551.00	89.660	165.580	6327.05	9246.01	-8618.33	3357.26	1646486.94	14305706.63	39°23'41.515"N	80°58'42.648"W	9249.15	158.717	0.34	0.19	-0.28	
15646.00	89.970	162.890	6327.36	9340.77	-8709.75	3383.07	1646512.73	14305615.25	39°23'40.611"N	80°58'42.370"W	9343.71	158.773	2.85	0.33	-2.83	
15740.00	89.350	159.370	6327.92	9434.74	-8798.68	3413.46	1646543.12	14305526.36	39°23'39.732"N	80°58'41.933"W	9437.61	158.796	3.80	-0.66	-3.74	
15834.00	89.510	158.530	6328.85	9528.71	-8886.40	3447.22	1646576.87	14305438.67	39°23'38.865"N	80°58'41.503"W	9531.61	158.798	0.91	0.17	-0.85	
15928.00	89.600	157.090	6329.58	9622.62	-8973.44	3482.72	1646612.35	14305351.67	39°23'38.005"N	80°58'41.051"W	9625.59	158.788	1.53	0.10	-1.53	
16022.00	89.540	156.430	6330.29	9716.45	-9059.81	3519.81	1646649.43	14305265.34	39°23'37.151"N	80°58'40.579"W	9719.53	158.768	0.71	-0.06	-0.70	
16116.00	89.540	156.540	6331.04	9810.25	-9146.00	3557.32	1646686.91	14305179.18	39°23'36.299"N	80°58'40.102"W	9813.45	158.747	0.12	0.00	0.12	
16210.00	89.570	155.990	6331.77	9904.02	-9232.04	3595.15	1646724.73	14305093.17	39°23'35.449"N	80°58'39.620"W	9907.36	158.723	0.59	0.03	-0.59	
16305.00	89.380	156.670	6332.64	9998.80	-9319.05	3633.29	1646762.86	14305006.20	39°23'34.589"N	80°58'39.135"W	10002.27	158.700	0.74	-0.20	0.72	
16399.00	89.350	156.730	6333.68	10092.62	-9405.38	3670.47	1646800.02	14304919.91	39°23'33.735"N	80°58'38.661"W	10096.21	158.682	0.07	-0.03	0.06	
16493.00	89.540	158.200	6334.59	10186.50	-9492.19	3708.49	1646836.03	14304833.12	39°23'32.877"N	80°58'38.203"W	10190.18	158.670	1.58	0.20	1.56	
16588.00	89.420	160.340	6335.46	10281.48	-9581.03	3740.11	1646869.64	14304744.32	39°23'31.999"N	80°58'37.775"W	10285.17	158.676	2.26	-0.13	2.25	
16682.00	89.450	163.380	6336.38	10375.43	-9670.35	3769.37	1646898.89	14304655.04	39°23'31.116"N	80°58'37.402"W	10379.01	158.705	3.23	0.03	3.23	
16777.00	89.630	165.590	6337.15	10470.15	-9761.88	3794.78	1646924.29	14304563.55	39°23'30.211"N	80°58'37.079"W	10473.52	158.757	2.33	0.19	2.33	
16871.00	89.570	164.790	6337.80	10563.79	-9852.75	3818.81	1646948.30	14304472.71	39°23'29.313"N	80°58'36.773"W	10566.93	158.814	0.85	-0.06	-0.85	
16913.00	89.720	164.160	6338.06	10605.68	-9893.22	3830.05	1646969.54	14304382.26	39°23'28.913"N	80°58'36.630"W	10608.72	158.837	1.54	0.36	-1.50	
16938.00	89.720	164.160	6338.19	10630.82	-9917.27	3838.88	1646966.36	14304308.22	39°23'28.676"N	80°58'36.543"W	10633.62	158.849	0.00	0.00	0.00	Projected MD at TD: 16938'

HOLE & CASING SECTIONS - Ref Wellbore: Wick Unit 3H AWB Ref Wellpath: Wick Unit 3H AWP Proj: 16938'

String/Diameter	Start MD (ft)	End MD (ft)	Interval (ft)	Start TVD (ft)	End TVD (ft)	Start N/S (ft)	End N/S (ft)	Start E/W (ft)	End E/W (ft)
20in Conductor	30.00	110.00	80.00	30.00	110.00	0.00	-0.04	0.00	0.07
17.5in Open Hole	110.00	650.00	540.00	110.00	649.99	-0.04	-1.89	0.07	-1.07
13.375in Casing Surface	30.00	632.30	602.30	30.00	632.29	0.00	-1.79	0.00	-1.03
12.25in Open Hole	632.30	2597.00	1964.70	632.29	2596.39	-1.79	-4.70	-1.03	-2.34
9.625in Open Hole	30.00	2577.40	2547.40	30.00	2576.79	0.00	-4.57	0.00	-2.16
8.75in Open Hole	2597.00	5110.00	2513.00	2596.39	5087.02	-4.70	299.79	-2.34	97.11
8.5in Open Hole	5110.00	16938.00	11828.00	5087.02	6338.19	299.79	-9917.27	97.11	3836.88
5.5in Casing Production	30.00	16938.00	16908.00	30.00	6338.19	0.00	-9917.27	0.00	3836.88

TARGETS

Name	TVD (ft)	North (ft)	East (ft)	Grid East (US ft)	Grid North (US ft)	Latitude	Longitude	Shape
Wick Unit 3H - POE - Rev-1	6225.00	-83.56	322.83	1643453.73	14314237.97	39°25'05.874"N	80°59'21.287"W	point
Wick Unit 3H - LP - Rev-1	6263.00	-300.16	400.76	1643531.63	14314021.47	39°25'03.733"N	80°59'20.294"W	point
Wick Unit 3H - BHL - Rev-1	6263.00	-10404.94	4036.51	1647165.92	14303920.74	39°23'23.855"N	80°58'34.002"W	point
Wick Unit 3H BHL Rev-2	6263.00	-10318.15	4005.28	1647134.70	14304007.50	39°23'24.713"N	80°58'34.400"W	point



Actual Wellpath Report

Wick Unit 3H AWP Proj: 16938'
Page 9 of 10



REFERENCE WELLPATH IDENTIFICATION			
Operator	ANTERO RESOURCES CORPORATION	Slot	Slot #04
Area	Tyler County, WV	Well	Wick Unit 3H
Field	Tyler	Wellbore	Wick Unit 3H AWB
Facility	Gorrell Pad		

WELLPATH COMPOSITION - Ref Wellbore: Wick Unit 3H AWB Ref Wellpath: Wick Unit 3H AWP Proj: 16938'			
Start MD (ft)	End MD (ft)	Positional Uncertainty Model	Log Name/Comment
30.00	613.00	Gyrodata standard - Drop gyro or Multi-shot	01 Gyrodata MS Gyro <17-1/2">(100'-613')
613.00	2528.00	BHI NaviTrak (Axial)	02 APS EM <12-1/4">(613')\690'-2528')
2528.00	5042.00	BHI NaviTrak (Axial)	03 APS EM <8-3/4">(2528')\2596'-5042')
5042.00	16913.00	BHI AutoTrak Curve (Short)	04 BH AT Curve <8-1/2">(5042')\5082'-16913')
16913.00	16938.00	Blind Drilling (std)	Projection to bit
			Wellbore



Actual Wellpath Report

Wick Unit 3H AWP Proj: 16938'
Page 10 of 10



REFERENCE WELLPATH IDENTIFICATION			
Operator	ANTERO RESOURCES CORPORATION	Slot	Slot #04
Area	Tyler County, WV	Well	Wick Unit 3H
Field	Tyler	Wellbore	Wick Unit 3H AWB
Facility	Gorrell Pad		

COMMENTS
<p>Wellpath general comments API: 47-095-02595-0000 BHI Job #: 109806187A Rig: H&P 519 Duration: 05/06/2019-06/16/2019 Gyrodatta MS Gyro <17-1/2">-(100'-613') APS EM <12-1/4">(613')(690'-2528') APS EM <8-3/4"> (2528')(2596'-5042') BH AT Curve <8-1/2"> (5042')(5082'-16913') Middlesex: 6245' MD Burkett: 6437' MD Tully: 6459' MD Marcellus POE: 6539' MD Projected MD at TD: 16938'</p>