



Actual Wellpath Report

Alpine East Unit 2H AWP Proj: 22152'
Page 1 of 13



REFERENCE WELLPATH IDENTIFICATION

Operator	ANTERO RESOURCES CORPORATION	Well	Alpine East Unit 2H
Field	Tyler	API	47-095-02597-0000
Facility	Sine Pad	Wellbore	Alpine East Unit 2H AWB
Slot	Slot #04		

REPORT SETUP INFORMATION

Projection System	NAD27 / UTM Zone 17 North, US feet	Software System	WellArchitect® 6.0
North Reference	Grid	User	Delaset
Scale	0.999600	Report Generated	6/10/2020 at 1:51:40 PM
Convergence at slot	0.03° East	Database	WA_MPL_EasternUS_Defn

WELLPATH LOCATION

	Local coordinates		Grid coordinates		Geographic coordinates	
	North[ft]	East[ft]	Easting[US ft]	Northing[US ft]	Latitude	Longitude
Slot Location	16.11	-175.03	1652478.91	14313077.18	39°24'54.3700"N	80°57'26.2500"W
Facility Reference Pt			1652653.87	14313061.08	39°24'54.2100"N	80°57'24.0200"W
Field Reference Pt			0.00	0.00	0°00'0.0000"	85°29'19.3013"W

WELLPATH DATUM

Calculation method	Minimum curvature	H&P 519 (RKB) to Facility Vertical Datum	30.00ft
Horizontal Reference Pt	Slot	H&P 519 (RKB) to Mean Sea Level	829.00ft
Vertical Reference Pt	H&P 519 (RKB)	H&P 519 (RKB) to Ground Level at Slot (Slot #04)	30.00ft
MD Reference Pt	H&P 519 (RKB)	Section Origin	N 0.00, E 0.00 ft
Field Vertical Reference	Mean Sea Level	Section Azimuth	340.14°



Actual Wellpath Report

Alpine East Unit 2H AWP Proj: 22152'
Page 2 of 13



REFERENCE WELLPATH IDENTIFICATION				
Operator	ANTERO RESOURCES CORPORATION		Well	Alpine East Unit 2H
Field	Tyler		API	47-095-02597-0000
Facility	Sine Pad		Wellbore	Alpine East Unit 2H AWB
Slot	Slot #04			

WELLPATH DATA (247 stations) † = interpolated, ‡ = extrapolated station																	
MD (ft)	Inclination (°)	Azimuth (°)	TVD (ft)	Vert Sect (ft)	North (ft)	East (ft)	Grid East (US ft)	Grid North (US ft)	Latitude	Longitude	Closure Dist (ft)	Closure Dir (°)	DLS (°/100ft)	Build Rate (°/100ft)	Turn Rate (°/100ft)	Comments	
0.00	†	0.000	348.310	0.00	0.00	0.00	1652478.91	14313077.18	39°24'54.3700"N	80°57'26.2500"W	0.00	0.000	0.00	0.00	0.00		
30.00		0.000	348.310	30.00	0.00	0.00	1652478.91	14313077.18	39°24'54.3700"N	80°57'26.2500"W	0.00	0.000	0.00	0.00	0.00		
100.00		0.150	348.310	100.00	0.09	0.09	1652478.89	14313077.27	39°24'54.3709"N	80°57'26.2502"W	0.09	348.310	0.21	0.21	0.00		Gyrodata MS Gyro <17-1/2">(100'-267')
125.00		0.110	327.050	125.00	0.15	0.14	-0.04	1652478.87	14313077.32	39°24'54.3714"N	80°57'26.2505"W	0.15	344.916	0.25	-0.16	-85.04	
150.00		0.110	31.470	150.00	0.18	0.18	-0.04	1652478.87	14313077.36	39°24'54.3718"N	80°57'26.2505"W	0.19	348.007	0.47	0.00	257.68	
175.00		0.090	291.510	175.00	0.21	0.21	-0.04	1652478.86	14313077.39	39°24'54.3721"N	80°57'26.2506"W	0.21	348.043	0.61	-0.08	-399.84	
200.00		0.020	311.620	200.00	0.23	0.22	-0.07	1652478.84	14313077.40	39°24'54.3722"N	80°57'26.2508"W	0.23	343.311	0.29	-0.28	80.44	
225.00		0.080	12.300	225.00	0.24	0.24	-0.07	1652478.84	14313077.41	39°24'54.3723"N	80°57'26.2508"W	0.25	344.258	0.21	0.16	242.72	
250.00		0.060	74.170	250.00	0.25	0.25	-0.05	1652478.86	14313077.43	39°24'54.3725"N	80°57'26.2506"W	0.26	348.545	0.25	0.00	247.48	
267.00		0.110	66.210	267.00	0.26	0.26	-0.03	1652478.88	14313077.44	39°24'54.3726"N	80°57'26.2504"W	0.26	353.963	0.30	0.29	-46.82	
415.00		0.170	331.270	415.00	0.48	0.51	0.00	1652478.91	14313077.69	39°24'54.3751"N	80°57'26.2500"W	0.51	359.644	0.14	0.04	-64.15	APS EM <12-1/4">(267')(415'-2546')
506.00		0.280	342.800	506.00	0.84	0.84	-0.13	1652478.78	14313078.02	39°24'54.3783"N	80°57'26.2517"W	0.85	350.969	0.13	0.12	12.67	
597.00		0.490	346.620	597.00	1.45	1.43	-0.29	1652478.62	14313078.61	39°24'54.3842"N	80°57'26.2537"W	1.46	348.574	0.23	0.23	4.20	
688.00		0.780	352.260	687.99	2.44	2.43	-0.46	1652478.45	14313079.60	39°24'54.3940"N	80°57'26.2559"W	2.47	349.190	0.33	0.32	6.20	
778.00		1.170	353.730	777.98	3.93	3.95	-0.65	1652478.26	14313081.12	39°24'54.4090"N	80°57'26.2582"W	4.00	350.703	0.43	0.43	1.63	
869.00		1.570	356.320	868.95	6.03	6.11	-0.83	1652478.08	14313083.29	39°24'54.4304"N	80°57'26.2605"W	6.17	352.292	0.44	0.44	2.85	
959.00		1.010	355.930	958.93	7.98	8.13	-0.96	1652477.95	14313085.31	39°24'54.4504"N	80°57'26.2622"W	8.19	353.250	0.62	-0.62	-0.43	
1050.00		0.610	217.170	1049.92	8.49	8.55	-1.31	1652477.60	14313085.72	39°24'54.4545"N	80°57'26.2667"W	8.65	351.272	1.67	-0.44	-152.48	
1144.00		1.640	204.480	1143.90	7.25	6.93	-2.17	1652476.74	14313084.10	39°24'54.4385"N	80°57'26.2776"W	7.26	342.587	1.12	1.10	-13.50	
1239.00		1.940	196.890	1238.86	4.99	4.15	-3.20	1652475.71	14313081.33	39°24'54.4110"N	80°57'26.2908"W	5.24	322.341	0.40	0.32	-7.99	
1333.00		1.480	171.520	1332.82	2.53	1.43	-3.49	1652475.42	14313078.60	39°24'54.3841"N	80°57'26.2944"W	3.77	292.260	0.93	-0.49	-26.99	
1427.00		1.000	66.010	1426.80	1.40	0.56	-2.56	1652476.35	14313077.74	39°24'54.3755"N	80°57'26.2826"W	2.62	282.342	2.12	-0.51	-112.24	
1522.00		2.500	29.000	1521.76	2.82	2.71	-0.80	1652478.11	14313079.89	39°24'54.3968"N	80°57'26.2601"W	2.82	343.636	1.90	1.58	-38.96	
1616.00		2.460	59.520	1615.68	4.54	5.53	1.94	1652480.85	14313082.70	39°24'54.4246"N	80°57'26.2253"W	5.86	19.320	1.39	-0.04	32.47	
1710.00		2.190	148.700	1709.62	3.15	5.01	4.61	1652483.52	14313082.19	39°24'54.4195"N	80°57'26.1912"W	6.81	42.594	3.48	-0.29	94.87	
1805.00		3.850	175.410	1804.49	-1.71	0.28	5.81	1652484.71	14313077.46	39°24'54.3728"N	80°57'26.1760"W	5.81	87.208	2.25	1.75	28.12	
1899.00		2.870	191.320	1898.33	-6.76	-5.17	5.60	1652484.51	14313072.01	39°24'54.3189"N	80°57'26.1787"W	7.62	132.722	1.43	-1.04	16.93	
1994.00		1.310	303.960	1993.29	-7.92	-6.90	4.23	1652483.14	14313070.29	39°24'54.3018"N	80°57'26.1961"W	8.09	148.473	3.77	-1.64	118.57	
2088.00		3.330	339.310	2087.21	-4.33	-3.74	2.37	1652481.28	14313073.44	39°24'54.3330"N	80°57'26.2198"W	4.43	147.600	2.54	2.15	37.61	
2182.00		1.950	343.480	2181.11	0.00	0.35	0.96	1652479.86	14313077.52	39°24'54.3734"N	80°57'26.2378"W	1.02	70.085	1.48	-1.47	4.44	

RECEIVED
 Office of Oil and Gas
 FEB 17 2023
 WY Department of
 Environmental Protection



Actual Wellpath Report

Alpine East Unit 2H AWP Proj: 22152'
Page 3 of 13



REFERENCE WELLPATH IDENTIFICATION				
Operator	ANTERO RESOURCES CORPORATION		Well	Alpine East Unit 2H
Field	Tyler		API	47-095-02597-0000
Facility	Sine Pad		Wellbore	Alpine East Unit 2H AWB
Slot	Slot #04			

WELLPATH DATA (247 stations)																
MD [ft]	Inclination [°]	Azimuth [°]	TVD [ft]	Vert Sect [ft]	North [ft]	East [ft]	Grid East [US ft]	Grid North [US ft]	Latitude	Longitude	Closure Dist [ft]	Closure Dir [°]	DLS [°/100ft]	Build Rate [°/100ft]	Turn Rate [°/100ft]	Comments
2277.00	0.330	122.870	2276.09	1.40	1.75	0.73	1652479.63	14313078.93	39°24'54.3873"N	80°57'26.2407"W	1.89	22.540	2.33	-1.71	146.73	
2371.00	0.910	141.730	2370.09	0.47	1.01	1.41	1652480.32	14313078.19	39°24'54.3800"N	80°57'26.2320"W	1.74	54.364	0.65	0.62	20.06	
2466.00	0.820	151.600	2465.08	-0.91	-0.18	2.21	1652481.11	14313077.00	39°24'54.3683"N	80°57'26.2219"W	2.21	94.561	0.18	-0.09	10.39	
2546.00	0.240	194.530	2545.07	-1.62	-0.84	2.44	1652481.34	14313076.34	39°24'54.3617"N	80°57'26.2190"W	2.58	109.064	0.83	-0.72	53.66	
2659.00	0.740	229.570	2658.07	-2.07	-1.54	1.82	1652480.73	14313075.64	39°24'54.3547"N	80°57'26.2268"W	2.39	130.297	0.50	0.44	31.01	APS EM <-8-3/4"> (2546')(2659-5307')
2753.00	3.240	137.530	2752.02	-4.74	-3.90	3.15	1652482.06	14313073.28	39°24'54.3315"N	80°57'26.2099"W	5.01	141.032	3.56	2.66	-97.91	
2847.00	5.790	121.730	2845.72	-10.91	-8.35	8.98	1652487.89	14313068.83	39°24'54.2874"N	80°57'26.1356"W	12.26	132.923	2.99	2.71	-16.81	
2942.00	5.120	116.860	2940.29	-17.75	-12.79	16.84	1652495.74	14313064.40	39°24'54.2435"N	80°57'26.0355"W	21.14	127.214	0.86	-0.71	-5.13	
3039.00	6.780	104.210	3036.77	-24.11	-16.15	26.25	1652505.15	14313061.04	39°24'54.2103"N	80°57'25.9156"W	30.82	121.599	2.17	1.71	-13.04	
3134.00	7.590	97.940	3131.02	-30.17	-18.39	37.90	1652516.79	14313058.79	39°24'54.1880"N	80°57'25.7672"W	42.13	115.886	1.19	0.85	-6.60	
3228.00	9.310	92.390	3224.00	-35.95	-19.57	51.65	1652530.54	14313057.62	39°24'54.1764"N	80°57'25.5921"W	55.23	110.749	2.02	1.83	-5.90	
3323.00	11.020	95.320	3317.51	-42.72	-20.73	68.37	1652547.25	14313056.46	39°24'54.1648"N	80°57'25.3790"W	71.44	106.867	1.88	1.80	3.08	
3417.00	11.450	103.110	3409.71	-51.62	-23.68	86.40	1652565.28	14313053.51	39°24'54.1356"N	80°57'25.1493"W	89.59	105.326	1.68	0.46	8.29	
3512.00	12.150	112.950	3502.71	-63.55	-29.72	104.79	1652583.66	14313047.47	39°24'54.0758"N	80°57'24.9150"W	108.92	105.832	2.24	0.74	10.36	
3607.00	15.010	116.680	3595.05	-79.28	-39.14	125.00	1652603.85	14313038.05	39°24'53.9826"N	80°57'24.6576"W	130.98	107.387	3.15	3.01	3.93	
3701.00	17.360	116.350	3685.32	-98.24	-50.83	148.44	1652627.29	14313026.37	39°24'53.8669"N	80°57'24.3590"W	156.90	108.903	2.50	2.50	-0.35	
3796.00	20.010	116.570	3775.30	-120.25	-64.40	175.68	1652654.52	14313012.81	39°24'53.7327"N	80°57'24.0120"W	187.11	110.130	2.79	2.79	0.23	
3891.00	23.290	111.830	3863.60	-144.53	-78.65	207.67	1652686.49	14312998.56	39°24'53.5916"N	80°57'23.6046"W	222.06	110.744	3.91	3.45	-4.99	
3986.00	22.650	105.600	3951.08	-167.63	-90.56	242.72	1652721.54	14312986.66	39°24'53.4738"N	80°57'23.1579"W	259.07	110.460	2.65	-0.67	-6.56	
4080.00	20.950	99.120	4038.36	-186.28	-98.09	276.76	1652755.56	14312979.13	39°24'53.3992"N	80°57'22.7244"W	293.63	109.516	3.13	-1.81	-6.89	
4175.00	19.500	93.590	4127.51	-200.82	-101.78	309.36	1652788.14	14312975.44	39°24'53.3626"N	80°57'22.3090"W	325.67	108.211	2.52	-1.53	-5.82	
4270.00	19.230	94.060	4217.14	-213.47	-103.88	340.79	1652819.56	14312973.34	39°24'53.3417"N	80°57'21.9086"W	356.27	106.952	0.33	-0.28	0.49	
4364.00	19.110	98.760	4305.93	-227.12	-107.32	371.44	1652850.20	14312969.90	39°24'53.3076"N	80°57'21.5181"W	386.63	106.115	1.65	-0.13	5.00	
4458.00	20.790	105.800	4394.30	-244.22	-114.20	402.70	1652881.45	14312963.02	39°24'53.2393"N	80°57'21.1198"W	418.58	105.833	3.12	1.79	7.49	
4553.00	20.550	108.380	4483.18	-264.37	-124.05	434.75	1652913.48	14312953.18	39°24'53.1419"N	80°57'20.7115"W	452.10	105.926	0.99	-0.25	2.72	
4647.00	21.840	107.540	4570.82	-285.20	-134.52	467.08	1652945.80	14312942.71	39°24'53.0382"N	80°57'20.2997"W	486.07	106.067	1.41	1.37	-0.89	
4742.00	19.960	111.930	4659.58	-306.74	-145.91	498.97	1652977.68	14312931.33	39°24'52.9255"N	80°57'19.8933"W	519.87	106.300	2.57	-1.98	4.62	
4837.00	20.390	112.180	4748.75	-328.63	-158.21	529.34	1653008.04	14312919.03	39°24'52.8038"N	80°57'19.5065"W	552.48	106.640	0.46	0.45	0.26	
4931.00	19.520	103.090	4837.12	-348.14	-167.95	559.81	1653038.49	14312909.29	39°24'52.7074"N	80°57'19.1184"W	584.46	106.700	3.42	-0.93	-9.67	
5026.00	19.760	99.340	4926.60	-364.61	-174.15	591.12	1653069.79	14312903.10	39°24'52.6459"N	80°57'18.7195"W	616.24	106.416	1.35	0.25	-3.95	

RECEIVED
Office of Oil and Gas
FEB 17 2023
WV Department of
Environmental Protection



Actual Wellpath Report

Alpine East Unit 2H AWP Proj: 22152'
Page 4 of 13



REFERENCE WELLPATH IDENTIFICATION				
Operator	ANTERO RESOURCES CORPORATION		Well	Alpine East Unit 2H
Field	Tyler		API	47-095-02597-0000
Facility	Sine Pad		Wellbore	Alpine East Unit 2H AWB
Slot	Slot #04			

WELLPATH DATA (247 stations) † = interpolated, ‡ = extrapolated station																
MD (ft)	Inclination (°)	Azimuth (°)	TVD (ft)	Vert Sect (ft)	North (ft)	East (ft)	Grid East (US ft)	Grid North (US ft)	Latitude	Longitude	Closure Dist (ft)	Closure Dir (°)	DLS (°/100ft)	Build Rate (°/100ft)	Turn Rate (°/100ft)	Comments
5120.00	21.540	103.140	5014.56	-381.76	-180.66	623.60	1653102.26	14312896.60	39°24'52.5815"N	80°57'18.3057"W	649.24	106.156	2.37	1.89	4.04	
5215.00	22.440	104.890	5102.65	-401.60	-189.28	658.11	1653136.75	14312887.97	39°24'52.4961"N	80°57'17.8661"W	684.79	106.046	1.17	0.95	1.84	
5307.00	20.620	97.200	5188.24	-418.98	-195.82	691.16	1653169.79	14312881.43	39°24'52.4312"N	80°57'17.4450"W	718.37	105.819	3.65	-1.98	-8.36	
5427.00	16.460	91.590	5302.00	-434.82	-198.95	729.14	1653207.75	14312878.31	39°24'52.4002"N	80°57'16.9611"W	755.79	105.262	3.77	-3.47	-4.68	BH AT Curve <8-1/2">(5307)(5427-22127')
5521.00	16.800	93.930	5392.12	-445.10	-200.24	755.85	1653234.45	14312877.02	39°24'52.3873"N	80°57'16.6209"W	781.92	104.838	0.72	0.15	2.49	
5616.00	16.780	68.540	5483.24	-450.20	-196.14	782.18	1653260.78	14312881.11	39°24'52.4276"N	80°57'16.2853"W	806.40	104.077	7.62	0.19	-26.73	
5710.00	19.770	55.280	5572.52	-445.74	-182.11	807.89	1653286.48	14312895.14	39°24'52.5662"N	80°57'15.9576"W	828.17	102.703	5.43	3.18	-14.11	
5805.00	24.820	32.900	5660.55	-429.52	-156.16	831.99	1653310.56	14312921.08	39°24'52.8226"N	80°57'15.6504"W	846.52	100.630	10.31	5.32	-23.56	
5899.00	31.340	12.100	5743.64	-396.72	-115.55	847.88	1653326.45	14312961.67	39°24'53.2238"N	80°57'15.4476"W	855.72	97.761	12.42	6.94	-22.13	
5994.00	37.800	0.420	5821.91	-348.35	-62.17	853.29	1653331.85	14313015.04	39°24'53.7514"N	80°57'15.3784"W	855.55	94.167	9.72	6.80	-12.29	
6089.00	46.260	355.520	5892.43	-287.83	1.29	850.82	1653329.38	14313078.47	39°24'54.3786"N	80°57'15.4095"W	850.82	89.913	9.55	8.91	-5.16	
6141.00†	51.631	355.796	5926.57	-250.06	40.38	847.85	1653326.42	14313117.54	39°24'54.7650"N	80°57'15.4470"W	848.81	87.273	10.34	10.33	0.53	Middlesex: 6141' MD
6183.00	55.970	355.990	5951.37	-217.45	74.17	845.43	1653324.00	14313151.32	39°24'55.0990"N	80°57'15.4777"W	848.67	84.986	10.34	10.33	0.46	
6230.00	60.680	358.280	5976.05	-179.22	114.11	843.45	1653322.02	14313191.24	39°24'55.4937"N	80°57'15.5027"W	851.13	82.295	10.84	10.02	4.87	
6278.00	64.390	0.320	5998.18	-139.00	156.69	842.94	1653321.51	14313233.80	39°24'55.9145"N	80°57'15.5089"W	857.38	79.470	8.60	7.73	4.25	
6313.00†	67.359	1.746	6012.49	-109.16	188.62	843.52	1653322.09	14313265.72	39°24'56.2301"N	80°57'15.5013"W	864.35	77.396	9.26	8.48	4.07	Burkett: 6313' MD
6325.00	68.380	2.220	6017.01	-98.85	199.73	843.91	1653322.48	14313276.83	39°24'56.3399"N	80°57'15.4963"W	867.22	76.685	9.26	8.51	3.95	
6373.00	71.300	1.970	6033.55	-57.06	244.75	845.55	1653324.12	14313321.83	39°24'56.7849"N	80°57'15.4750"W	880.26	73.857	6.10	6.08	-0.52	
6402.00†	72.783	2.887	6042.49	-31.53	272.31	846.72	1653325.29	14313349.38	39°24'57.0573"N	80°57'15.4599"W	889.43	72.172	5.93	5.11	3.16	Marcellus POE: 6402' MD
6467.00	76.120	4.890	6059.91	25.77	334.78	850.98	1653329.54	14313411.82	39°24'57.6746"N	80°57'15.4053"W	914.46	68.525	5.93	5.13	3.08	
6562.00	83.250	0.230	6076.92	112.11	428.06	855.10	1653333.67	14313505.07	39°24'58.5966"N	80°57'15.3521"W	956.26	63.408	8.92	7.51	-4.91	
6657.00	91.230	353.290	6081.50	202.91	522.66	849.73	1653328.30	14313599.63	39°24'59.5316"N	80°57'15.4200"W	997.61	58.405	11.12	8.40	-7.31	
6751.00	91.170	346.000	6079.53	295.53	615.05	832.85	1653311.42	14313691.98	39°25'0.4448"N	80°57'15.6345"W	1035.34	53.554	7.75	-0.06	-7.76	
6845.00	90.490	341.820	6078.16	389.30	705.34	806.80	1653285.39	14313782.23	39°25'1.3373"N	80°57'15.9658"W	1071.65	48.839	4.50	-0.72	-4.45	
6940.00	90.800	343.340	6077.09	484.20	795.97	778.37	1653256.96	14313872.83	39°25'2.2332"N	80°57'16.3275"W	1113.30	44.359	1.63	0.33	1.60	
7035.00	90.770	344.030	6075.79	579.01	887.14	751.68	1653230.29	14313963.96	39°25'3.1344"N	80°57'16.6669"W	1162.77	40.275	0.73	-0.03	0.73	
7130.00	90.740	342.040	6074.54	673.88	977.99	723.97	1653202.58	14314054.78	39°25'4.0325"N	80°57'17.0195"W	1216.80	36.511	2.09	-0.03	-2.09	
7224.00	91.110	339.960	6073.02	767.85	1066.85	693.37	1653172.00	14314143.60	39°25'4.9109"N	80°57'17.4088"W	1272.38	33.021	2.25	0.39	-2.21	
7319.00	90.490	338.400	6071.70	862.82	1155.64	659.61	1653138.25	14314232.35	39°25'5.7886"N	80°57'17.8384"W	1330.63	29.717	1.77	-0.65	-1.64	
7413.00	90.990	338.630	6070.48	956.78	1243.10	625.18	1653103.84	14314319.78	39°25'6.6532"N	80°57'18.2765"W	1391.46	26.699	0.59	0.53	0.24	



Actual Wellpath Report

Alpine East Unit 2H AWP Proj: 22152'
Page 5 of 13



REFERENCE WELLPATH IDENTIFICATION			
Operator	ANTERO RESOURCES CORPORATION	Well	Alpine East Unit 2H
Field	Tyler	API	47-095-02597-0000
Facility	Sine Pad	Wellbore	Alpine East Unit 2H AWB
Slot	Slot #04		

WELLPATH DATA (247 stations)																
MD [ft]	Inclination [°]	Azimuth [°]	TVD [ft]	Vert Sect [ft]	North [ft]	East [ft]	Grid East [US ft]	Grid North [US ft]	Latitude	Longitude	Closure Dist [ft]	Closure Dir [°]	DLS [ft/100ft]	Build Rate [ft/100ft]	Turn Rate [ft/100ft]	Comments
7508.00	90.770	341.750	6069.02	1051.76	1332.46	592.99	1653071.66	14314409.10	39°25'7.5365"N	80°57'18.6861"W	1458.45	23.991	3.29	-0.23	3.28	
7602.00	90.920	341.800	6067.64	1145.71	1421.73	563.60	1653042.28	14314498.34	39°25'8.4190"N	80°57'19.0601"W	1529.37	21.624	0.17	0.16	0.05	
7697.00	90.680	343.680	6066.31	1240.60	1512.44	535.42	1653014.11	14314589.01	39°25'9.3156"N	80°57'19.4186"W	1604.41	19.494	1.99	-0.25	1.98	
7792.00	90.580	344.970	6065.27	1335.33	1603.90	509.75	1652988.45	14314680.43	39°25'10.2197"N	80°57'19.7451"W	1682.96	17.631	1.36	-0.11	1.36	
7887.00	90.800	344.640	6064.12	1430.01	1695.57	484.85	1652963.57	14314772.07	39°25'11.1259"N	80°57'20.0617"W	1763.53	15.958	0.42	0.23	-0.35	
7981.00	90.830	341.740	6062.78	1523.86	1785.54	457.67	1652936.40	14314862.00	39°25'12.0152"N	80°57'20.4075"W	1843.26	14.377	3.08	0.03	-3.09	
8076.00	90.770	339.040	6061.46	1618.84	1875.01	425.80	1652904.53	14314951.43	39°25'12.8996"N	80°57'20.8131"W	1922.75	12.794	2.84	-0.06	-2.84	
8170.00	90.890	339.180	6060.10	1712.82	1962.82	392.28	1652871.03	14315039.21	39°25'13.7677"N	80°57'21.2396"W	2001.64	11.302	0.20	0.13	0.15	
8265.00	91.020	339.860	6058.51	1807.80	2051.80	359.05	1652837.81	14315128.16	39°25'14.6473"N	80°57'21.6625"W	2082.98	9.926	0.73	0.14	0.72	
8359.00	90.550	338.310	6057.23	1901.77	2139.60	325.50	1652804.27	14315215.92	39°25'15.5152"N	80°57'22.0895"W	2164.22	8.650	1.72	-0.50	-1.65	
8454.00	90.490	338.460	6056.36	1996.72	2227.91	290.50	1652769.29	14315304.20	39°25'16.3882"N	80°57'22.5349"W	2246.77	7.429	0.17	-0.06	0.16	
8548.00	90.550	336.750	6055.51	2090.62	2314.82	254.69	1652733.50	14315391.07	39°25'17.2473"N	80°57'22.9907"W	2328.79	6.279	1.82	0.06	-1.82	
8643.00	90.520	338.010	6054.62	2185.50	2402.50	218.16	1652696.98	14315478.72	39°25'18.1141"N	80°57'23.4557"W	2412.39	5.188	1.33	-0.03	1.33	
8737.00	90.550	335.970	6053.74	2279.35	2489.02	181.42	1652660.25	14315565.20	39°25'18.9693"N	80°57'23.9233"W	2495.62	4.169	2.17	0.03	-2.17	
8832.00	90.980	336.990	6052.48	2374.15	2576.12	143.51	1652622.36	14315652.26	39°25'19.8304"N	80°57'24.4058"W	2580.11	3.188	1.17	0.45	1.07	
8927.00	90.830	337.200	6050.98	2469.00	2663.61	106.54	1652585.40	14315739.72	39°25'20.6953"N	80°57'24.8764"W	2665.74	2.290	0.27	-0.16	0.22	
9021.00	91.020	339.340	6049.46	2562.94	2750.92	71.74	1652550.62	14315826.99	39°25'21.5584"N	80°57'25.3192"W	2751.85	1.494	2.29	0.20	2.28	
9115.00	90.490	336.380	6048.22	2656.84	2837.97	36.32	1652515.22	14315914.01	39°25'22.4189"N	80°57'25.7700"W	2838.20	0.733	3.20	-0.56	-3.15	
9210.00	90.460	335.220	6047.43	2751.57	2924.62	-2.62	1652476.29	14316000.62	39°25'23.2755"N	80°57'26.2657"W	2924.62	359.949	1.22	-0.03	-1.22	
9304.00	90.460	341.010	6046.88	2845.46	3011.80	-37.64	1652441.28	14316087.77	39°25'24.1373"N	80°57'26.7115"W	3012.04	359.284	6.16	0.00	6.16	
9399.00	90.740	341.430	6045.68	2940.44	3101.74	-68.22	1652410.72	14316177.67	39°25'25.0264"N	80°57'27.1006"W	3102.49	358.740	0.53	0.29	0.44	
9493.00	90.770	343.530	6044.44	3034.35	3191.37	-96.51	1652382.43	14316267.26	39°25'25.9123"N	80°57'27.4606"W	3192.82	358.268	2.23	0.03	2.23	
9588.00	90.740	343.020	6043.19	3129.20	3282.34	-123.85	1652355.11	14316358.20	39°25'26.8116"N	80°57'27.8084"W	3284.67	357.839	0.54	-0.03	-0.54	
9682.00	90.740	346.570	6041.98	3222.87	3373.03	-148.50	1652330.47	14316448.85	39°25'27.7080"N	80°57'28.1220"W	3376.29	357.479	3.78	0.00	3.78	
9777.00	90.990	350.230	6040.54	3316.85	3466.06	-167.60	1652311.38	14316541.85	39°25'28.6276"N	80°57'28.3648"W	3470.11	357.232	3.86	0.26	3.85	
9871.00	90.740	348.110	6039.12	3409.67	3558.37	-185.26	1652293.73	14316634.12	39°25'29.5400"N	80°57'28.5893"W	3563.19	357.020	2.27	-0.27	-2.26	
9966.00	90.580	343.330	6038.03	3504.19	3650.40	-208.68	1652270.31	14316726.11	39°25'30.4497"N	80°57'28.8872"W	3656.36	356.728	5.03	-0.17	-5.03	
10060.00	90.550	341.580	6037.10	3598.10	3740.02	-237.01	1652241.99	14316815.70	39°25'31.3356"N	80°57'29.2477"W	3747.52	356.374	1.86	-0.03	-1.86	
10155.00	90.620	344.380	6036.13	3692.97	3830.85	-264.82	1652214.20	14316906.48	39°25'32.2334"N	80°57'29.6015"W	3839.99	356.046	2.95	0.07	2.95	
10249.00	91.080	345.380	6034.74	3786.64	3921.58	-289.33	1652189.69	14316997.18	39°25'33.1303"N	80°57'29.9134"W	3932.24	355.780	1.17	0.49	1.06	

RECEIVED
Office of Oil and Gas
FEB 17 2023
WV Department of
Environmental Protection



Actual Wellpath Report

Alpine East Unit 2H AWP Proj: 22152'
Page 6 of 13



REFERENCE WELLPATH IDENTIFICATION				
Operator	ANTERO RESOURCES CORPORATION		Well	Alpine East Unit 2H
Field	Tyler		API	47-095-02597-0000
Facility	Sine Pad		Wellbore	Alpine East Unit 2H AWB
Slot	Slot #04			

WELLPATH DATA (247 stations)																
MD (ft)	Inclination (°)	Azimuth (°)	TVD (ft)	Vert Sect (ft)	North (ft)	East (ft)	Grid East (US ft)	Grid North (US ft)	Latitude	Longitude	Closure Dist (ft)	Closure Dir (°)	DLS (ft/100ft)	Build Rate (ft/100ft)	Turn Rate (ft/100ft)	Comments
10344.00	90.520	343.140	6033.41	3881.38	4013.00	-315.10	1652163.94	14317088.57	39°25'34.0340"N	80°57'30.2412"W	4025.35	355.510	2.43	-0.59	-2.36	
10438.00	90.520	341.860	6032.56	3975.29	4102.65	-343.36	1652135.68	14317178.18	39°25'34.9201"N	80°57'30.6009"W	4116.99	355.216	1.36	0.00	-1.36	
10533.00	90.550	339.620	6031.67	4070.28	4192.32	-374.70	1652104.36	14317267.81	39°25'35.8065"N	80°57'30.9996"W	4209.03	354.893	2.36	0.03	-2.36	
10627.00	90.620	335.330	6030.71	4164.15	4279.12	-410.70	1652068.38	14317354.58	39°25'36.6646"N	80°57'31.4579"W	4298.79	354.518	4.56	0.07	-4.56	
10721.00	91.140	334.900	6029.27	4257.78	4364.39	-450.25	1652028.84	14317439.81	39°25'37.5075"N	80°57'31.9614"W	4387.55	354.110	0.72	0.55	-0.46	
10816.00	90.430	333.970	6027.96	4352.29	4450.08	-491.24	1651987.87	14317525.47	39°25'38.3546"N	80°57'32.4832"W	4477.11	353.701	1.23	-0.75	-0.98	
10911.00	90.460	334.620	6027.23	4446.80	4535.67	-532.44	1651946.68	14317611.03	39°25'39.2007"N	80°57'33.0078"W	4566.82	353.305	0.68	0.03	0.68	
11005.00	90.430	334.210	6026.50	4540.33	4620.45	-573.03	1651906.10	14317695.77	39°25'40.0388"N	80°57'33.5246"W	4655.85	352.930	0.44	-0.03	-0.44	
11100.00	90.550	335.920	6025.68	4634.95	4706.59	-613.08	1651866.07	14317781.88	39°25'40.8904"N	80°57'34.0345"W	4746.35	352.578	1.80	0.13	1.80	
11194.00	90.550	339.350	6024.78	4728.84	4793.50	-648.84	1651830.33	14317868.75	39°25'41.7495"N	80°57'34.4897"W	4837.22	352.291	3.65	0.00	3.65	
11289.00	90.620	339.780	6023.81	4823.83	4882.52	-682.01	1651797.17	14317957.74	39°25'42.6294"N	80°57'34.9119"W	4929.92	352.048	0.46	0.07	0.45	
11384.00	90.830	342.310	6022.61	4918.80	4972.35	-712.86	1651766.33	14318047.53	39°25'43.5175"N	80°57'35.3046"W	5023.19	351.841	2.67	0.22	2.66	
11478.00	90.580	347.270	6021.45	5012.46	5063.02	-737.52	1651741.69	14318138.17	39°25'44.4137"N	80°57'35.6182"W	5116.46	351.712	5.28	-0.27	5.28	
11573.00	90.580	346.810	6020.49	5106.76	5155.60	-758.82	1651720.39	14318230.71	39°25'45.3288"N	80°57'35.8892"W	5211.14	351.627	0.48	0.00	-0.48	
11668.00	90.550	344.250	6019.55	5201.33	5247.57	-782.56	1651696.67	14318322.64	39°25'46.2379"N	80°57'36.1911"W	5305.60	351.518	2.69	-0.03	-2.69	
11762.00	90.620	341.930	6018.59	5295.19	5337.50	-809.89	1651669.34	14318412.53	39°25'47.1268"N	80°57'36.5390"W	5398.59	351.372	2.47	0.07	-2.47	
11857.00	90.460	338.470	6017.70	5390.17	5426.87	-842.07	1651637.18	14318501.86	39°25'48.0102"N	80°57'36.9485"W	5491.81	351.180	3.65	-0.17	-3.64	
11952.00	90.430	338.050	6016.96	5485.12	5515.11	-877.25	1651602.01	14318590.07	39°25'48.8825"N	80°57'37.3965"W	5584.44	350.962	0.44	-0.03	-0.44	
12046.00	89.750	337.630	6016.81	5579.04	5602.16	-912.71	1651566.57	14318677.09	39°25'49.7430"N	80°57'37.8478"W	5676.02	350.747	0.85	-0.72	-0.45	
12141.00	89.880	337.860	6017.12	5673.96	5690.08	-948.69	1651530.60	14318764.98	39°25'50.6122"N	80°57'38.3059"W	5768.63	350.534	0.28	0.14	0.24	
12235.00	89.850	336.890	6017.34	5767.85	5776.85	-984.85	1651494.46	14318851.71	39°25'51.4699"N	80°57'38.7662"W	5860.20	350.325	1.03	-0.03	-1.03	
12330.00	89.940	337.050	6017.51	5862.70	5864.28	-1022.01	1651457.30	14318939.10	39°25'52.3341"N	80°57'39.2394"W	5952.67	350.114	0.19	0.09	0.17	
12424.00	89.940	336.650	6017.61	5956.55	5950.71	-1058.97	1651420.36	14319025.50	39°25'53.1885"N	80°57'39.7099"W	6044.20	349.909	0.43	0.00	-0.43	
12519.00	90.000	338.930	6017.66	6051.46	6038.65	-1094.88	1651384.47	14319113.41	39°25'54.0579"N	80°57'40.1670"W	6137.11	349.723	2.40	0.06	2.40	
12614.00	90.060	338.910	6017.61	6146.44	6127.30	-1129.05	1651350.32	14319202.01	39°25'54.9341"N	80°57'40.6020"W	6230.45	349.560	0.07	0.06	-0.02	
12708.00	90.000	338.940	6017.56	6240.42	6215.01	-1162.85	1651316.53	14319289.69	39°25'55.8012"N	80°57'41.0323"W	6322.86	349.402	0.07	-0.06	0.03	
12803.00	89.880	338.820	6017.66	6335.40	6303.63	-1197.08	1651282.31	14319378.27	39°25'56.6772"N	80°57'41.4680"W	6416.28	349.247	0.18	-0.13	-0.13	
12898.00	89.940	338.910	6017.81	6430.37	6392.24	-1231.33	1651248.07	14319466.85	39°25'57.5531"N	80°57'41.9041"W	6509.75	349.097	0.11	0.06	0.09	
12992.00	90.000	339.510	6017.86	6524.36	6480.12	-1264.70	1651214.72	14319554.69	39°25'58.4218"N	80°57'42.3288"W	6602.37	348.957	0.64	0.06	0.64	
13086.00	90.030	340.740	6017.84	6618.36	6568.51	-1296.65	1651182.78	14319643.05	39°25'59.2956"N	80°57'42.7356"W	6695.27	348.833	1.31	0.03	1.31	

RECEIVED
Office of Oil and Gas
FEB 17 2023
WV Department of
Environmental Protection



Actual Wellpath Report

Alpine East Unit 2H AWP Proj: 22152'

Page 7 of 13



REFERENCE WELLPATH IDENTIFICATION				
Operator	ANTERO RESOURCES CORPORATION		Well	Alpine East Unit 2H
Field	Tyler		API	47-095-02597-0000
Facility	Sine Pad		Wellbore	Alpine East Unit 2H AWB
Slot	Slot #04			

WELLPATH DATA (247 stations)																
MD [ft]	Inclination [°]	Azimuth [°]	TVD [ft]	Vert Sect [ft]	North [ft]	East [ft]	Grid East [US ft]	Grid North [US ft]	Latitude	Longitude	Closure Dist [ft]	Closure Dir [°]	DLS [°/100ft]	Build Rate [°/100ft]	Turn Rate [°/100ft]	Comments
13181.00	90.180	343.930	6017.66	6713.28	6659.02	-1325.48	1651153.96	14319733.53	39°26'0.1903"N	80°57'43.1025"W	6789.66	348.742	3.36	0.16	3.36	
13275.00	90.060	344.480	6017.47	6807.04	6749.47	-1351.06	1651128.39	14319823.94	39°26'1.0843"N	80°57'43.4281"W	6883.37	348.681	0.60	-0.13	0.59	
13370.00	89.880	345.300	6017.52	6901.71	6841.19	-1375.83	1651103.63	14319915.62	39°26'1.9909"N	80°57'43.7432"W	6978.16	348.629	0.88	-0.19	0.86	
13464.00	89.910	345.920	6017.69	6995.28	6932.24	-1399.19	1651080.28	14320006.63	39°26'2.8909"N	80°57'44.0405"W	7072.03	348.589	0.66	0.03	0.66	
13558.00	90.000	345.740	6017.76	7088.82	7023.38	-1422.20	1651057.28	14320097.73	39°26'3.7917"N	80°57'44.3332"W	7165.93	348.553	0.21	0.10	-0.19	
13653.00	89.940	341.510	6017.81	7183.62	7114.50	-1448.98	1651030.52	14320188.82	39°26'4.6925"N	80°57'44.6740"W	7260.56	348.488	4.45	-0.06	-4.45	
13747.00	90.220	340.820	6017.88	7277.61	7203.47	-1479.32	1651000.18	14320277.75	39°26'5.5719"N	80°57'45.0603"W	7353.80	348.395	0.79	0.30	-0.73	
13842.00	90.030	339.230	6017.47	7372.60	7292.75	-1511.77	1650967.74	14320367.00	39°26'6.4545"N	80°57'45.4734"W	7447.80	348.289	1.69	-0.20	-1.67	
13936.00	89.940	339.090	6017.50	7466.59	7380.60	-1545.22	1650934.31	14320454.81	39°26'7.3229"N	80°57'45.8992"W	7540.62	348.175	0.18	-0.10	-0.15	
14031.00	89.540	338.340	6017.93	7561.56	7469.12	-1579.70	1650899.84	14320543.30	39°26'8.1979"N	80°57'46.3382"W	7634.34	348.058	0.89	-0.42	-0.79	
14125.00	89.690	338.910	6018.56	7655.52	7556.65	-1613.96	1650865.60	14320630.79	39°26'9.0631"N	80°57'46.7744"W	7727.09	347.944	0.63	0.16	0.61	
14220.00	89.660	339.540	6019.10	7750.51	7645.47	-1647.66	1650831.91	14320719.58	39°26'9.9411"N	80°57'47.2034"W	7821.00	347.838	0.66	-0.03	0.66	
14315.00	89.780	340.350	6019.56	7845.51	7734.71	-1680.23	1650799.35	14320808.78	39°26'10.8232"N	80°57'47.6181"W	7915.11	347.744	0.86	0.13	0.85	
14409.00	89.660	339.150	6020.02	7939.50	7822.90	-1712.77	1650766.83	14320896.93	39°26'11.6950"N	80°57'48.0323"W	8008.20	347.650	1.28	-0.13	-1.28	
14504.00	89.780	338.890	6020.49	8034.48	7911.60	-1746.78	1650732.83	14320985.60	39°26'12.5718"N	80°57'48.4654"W	8102.14	347.550	0.30	0.13	-0.27	
14598.00	89.630	339.440	6020.97	8128.47	7999.45	-1780.21	1650699.41	14321073.41	39°26'13.4402"N	80°57'48.8910"W	8195.14	347.454	0.61	-0.16	0.59	
14693.00	89.690	339.690	6021.53	8223.46	8088.47	-1813.38	1650666.26	14321162.40	39°26'14.3201"N	80°57'49.3133"W	8289.25	347.364	0.27	0.06	0.26	
14787.00	89.690	341.430	6022.04	8317.45	8177.11	-1844.67	1650634.98	14321251.00	39°26'15.1963"N	80°57'49.7116"W	8382.59	347.287	1.85	0.00	1.85	
14882.00	89.320	341.940	6022.86	8412.41	8267.29	-1874.52	1650605.15	14321341.15	39°26'16.0877"N	80°57'50.0916"W	8477.14	347.225	0.66	-0.39	0.54	
14976.00	89.140	342.000	6024.13	8506.36	8356.67	-1903.61	1650576.07	14321430.49	39°26'16.9712"N	80°57'50.4619"W	8570.74	347.167	0.20	-0.19	0.06	
15071.00	89.110	340.610	6025.58	8601.33	8446.64	-1934.05	1650545.63	14321520.43	39°26'17.8606"N	80°57'50.8495"W	8665.24	347.103	1.46	-0.03	-1.46	
15166.00	89.170	341.590	6027.00	8696.30	8536.51	-1964.82	1650514.88	14321610.26	39°26'18.7489"N	80°57'51.2412"W	8759.71	347.038	1.03	0.06	1.03	
15260.00	89.110	339.580	6028.41	8790.28	8625.15	-1996.06	1650483.65	14321698.86	39°26'19.6251"N	80°57'51.6389"W	8853.10	346.970	2.14	-0.06	-2.14	
15355.00	89.170	340.170	6029.84	8885.27	8714.34	-2028.75	1650450.98	14321788.01	39°26'20.5067"N	80°57'52.0551"W	8947.37	346.895	0.62	0.06	0.62	
15449.00	89.200	340.780	6031.18	8979.26	8802.92	-2060.16	1650419.58	14321876.56	39°26'21.3824"N	80°57'52.4550"W	9040.78	346.828	0.65	0.03	0.65	
15544.00	89.200	339.820	6032.50	9074.25	8892.35	-2092.18	1650387.57	14321965.96	39°26'22.2664"N	80°57'52.8627"W	9135.16	346.760	1.01	0.00	-1.01	
15638.00	90.030	339.630	6033.14	9168.24	8980.53	-2124.75	1650355.01	14322054.10	39°26'23.1380"N	80°57'53.2774"W	9228.46	346.689	0.91	0.88	-0.20	
15733.00	89.940	338.210	6033.16	9263.22	9069.17	-2158.92	1650320.86	14322142.70	39°26'24.0142"N	80°57'53.7124"W	9322.59	346.610	1.50	-0.09	-1.49	
15828.00	89.910	338.170	6033.29	9358.16	9157.37	-2194.22	1650285.57	14322230.87	39°26'24.8860"N	80°57'54.1619"W	9416.58	346.525	0.05	-0.03	-0.04	
15922.00	89.780	337.540	6033.54	9452.09	9244.43	-2229.65	1650250.16	14322317.90	39°26'25.7467"N	80°57'54.6131"W	9509.51	346.440	0.68	-0.14	-0.67	

RECEIVED
Office of Oil and Gas
FEB 17 2023
WV Department of
Environmental Protection



Actual Wellpath Report

Alpine East Unit 2H AWP Proj: 22152'
Page 8 of 13



REFERENCE WELLPATH IDENTIFICATION			
Operator	ANTERO RESOURCES CORPORATION	Well	Alpine East Unit 2H
Field	Tyler	API	47-095-02597-0000
Facility	Sine Pad	Wellbore	Alpine East Unit 2H AWB
Slot	Slot #04		

WELLPATH DATA (247 stations)																
MD (ft)	Inclination (°)	Azimuth (°)	TVD (ft)	Vert Sect (ft)	North (ft)	East (ft)	Grid East (US ft)	Grid North (US ft)	Latitude	Longitude	Closure Dist (ft)	Closure Dir (°)	DLS (°/100ft)	Build Rate (°/100ft)	Turn Rate (°/100ft)	Comments
16017.00	90.180	335.510	6033.57	9546.89	9331.56	-2267.49	1650212.33	14322404.99	39°26'26.6080"N	80°57'55.0950"W	9603.10	346.342	2.18	0.42	-2.14	
16111.00	90.830	337.920	6032.74	9640.71	9417.90	-2304.65	1650175.19	14322491.29	39°26'27.4614"N	80°57'55.5681"W	9695.78	346.249	2.66	0.69	2.56	
16206.00	91.380	340.680	6030.91	9735.68	9506.74	-2338.22	1650141.63	14322580.10	39°26'28.3396"N	80°57'55.9956"W	9790.06	346.182	2.96	0.58	2.91	
16300.00	90.370	340.810	6029.48	9829.66	9595.47	-2369.21	1650110.65	14322668.79	39°26'29.2167"N	80°57'56.3902"W	9883.63	346.131	1.08	-1.07	0.14	
16394.00	89.880	340.740	6029.27	9923.65	9684.23	-2400.16	1650079.71	14322757.51	39°26'30.0940"N	80°57'56.7843"W	9977.23	346.080	0.53	-0.52	-0.07	
16489.00	89.750	339.960	6029.58	10018.65	9773.69	-2432.11	1650047.78	14322846.94	39°26'30.9784"N	80°57'57.1910"W	10071.75	346.026	0.83	-0.14	-0.82	
16583.00	89.820	338.580	6029.93	10112.64	9861.60	-2465.38	1650014.52	14322934.82	39°26'31.8474"N	80°57'57.6147"W	10165.10	345.964	1.47	0.07	-1.47	
16678.00	89.970	338.670	6030.10	10207.60	9950.07	-2500.00	1649979.91	14323023.25	39°26'32.7218"N	80°57'58.0556"W	10259.33	345.896	0.18	0.16	0.09	
16772.00	90.000	338.050	6030.13	10301.56	10037.44	-2534.67	1649945.26	14323110.59	39°26'33.5855"N	80°57'58.4970"W	10352.53	345.828	0.66	0.03	-0.66	
16867.00	89.910	338.090	6030.20	10396.50	10125.57	-2570.15	1649909.79	14323198.68	39°26'34.4566"N	80°57'58.9489"W	10446.67	345.758	0.10	-0.09	0.04	
16961.00	89.720	337.990	6030.51	10490.43	10212.75	-2605.30	1649874.66	14323285.82	39°26'35.3184"N	80°57'59.3965"W	10539.82	345.689	0.23	-0.20	-0.11	
17056.00	89.630	338.800	6031.05	10585.39	10301.07	-2640.28	1649839.69	14323374.11	39°26'36.1915"N	80°57'59.8419"W	10634.06	345.624	0.86	-0.09	0.85	
17150.00	89.600	338.000	6031.68	10679.34	10388.47	-2674.88	1649805.10	14323461.47	39°26'37.0554"N	80°58'0.2826"W	10727.32	345.561	0.85	-0.03	-0.85	
17245.00	89.720	339.060	6032.24	10774.30	10476.87	-2709.65	1649770.35	14323549.84	39°26'37.9293"N	80°58'0.7254"W	10821.60	345.499	1.12	0.13	1.12	
17339.00	89.600	340.940	6032.80	10868.29	10565.20	-2741.80	1649738.21	14323638.13	39°26'38.8023"N	80°58'1.1347"W	10915.17	345.452	2.00	-0.13	2.00	
17434.00	89.630	342.610	6033.44	10963.25	10655.43	-2771.51	1649708.51	14323728.33	39°26'39.6942"N	80°58'1.5130"W	11009.97	345.420	1.76	0.03	1.76	
17528.00	89.690	343.970	6034.00	11057.10	10745.46	-2798.54	1649681.50	14323818.32	39°26'40.5841"N	80°58'1.8571"W	11103.90	345.402	1.45	0.06	1.45	
17623.00	89.420	343.870	6034.73	11151.89	10836.74	-2824.85	1649655.20	14323909.56	39°26'41.4863"N	80°58'2.1920"W	11198.87	345.390	0.30	-0.28	-0.11	
17717.00	89.380	343.390	6035.72	11245.71	10926.92	-2851.34	1649628.72	14323999.71	39°26'42.3778"N	80°58'2.5293"W	11292.82	345.375	0.51	-0.04	-0.51	
17812.00	89.200	343.630	6036.90	11340.54	11018.01	-2878.30	1649601.76	14324090.76	39°26'43.2781"N	80°58'2.8726"W	11387.76	345.359	0.32	-0.19	0.25	
17906.00	89.140	343.450	6038.26	11434.37	11108.14	-2904.93	1649575.14	14324180.86	39°26'44.1691"N	80°58'3.2116"W	11481.70	345.345	0.20	-0.06	-0.19	
18000.00	89.110	343.330	6039.69	11528.20	11198.21	-2931.80	1649548.28	14324270.89	39°26'45.0594"N	80°58'3.5537"W	11575.64	345.329	0.13	-0.03	-0.13	
18095.00	88.770	342.120	6041.45	11623.09	11288.91	-2960.01	1649520.09	14324361.55	39°26'45.9559"N	80°58'3.9128"W	11670.52	345.308	1.32	-0.36	-1.27	
18189.00	89.140	341.420	6043.16	11717.04	11378.17	-2989.41	1649490.70	14324450.78	39°26'46.8382"N	80°58'4.2872"W	11764.33	345.279	0.84	0.39	-0.74	
18284.00	89.080	339.470	6044.64	11812.02	11467.68	-3021.20	1649458.92	14324540.25	39°26'47.7230"N	80°58'4.6920"W	11858.98	345.241	2.05	-0.06	-2.05	
18378.00	89.690	340.100	6045.65	11906.01	11555.88	-3053.68	1649426.46	14324628.42	39°26'48.5948"N	80°58'5.1056"W	11952.55	345.198	0.93	0.65	0.67	
18472.00	90.830	341.950	6045.22	11999.99	11644.77	-3084.24	1649395.91	14324717.27	39°26'49.4734"N	80°58'5.4948"W	12046.29	345.165	2.31	1.21	1.97	
18567.00	89.630	339.530	6044.84	12094.98	11734.44	-3115.58	1649364.59	14324806.91	39°26'50.3598"N	80°58'5.8938"W	12141.00	345.131	2.84	-1.26	-2.55	
18661.00	90.250	339.440	6044.94	12188.97	11822.48	-3148.52	1649331.66	14324894.91	39°26'51.2301"N	80°58'6.3134"W	12234.55	345.087	0.67	0.66	-0.10	
18756.00	90.150	337.510	6044.61	12283.93	11910.65	-3183.37	1649296.82	14324983.24	39°26'52.1036"N	80°58'6.7573"W	12328.92	345.036	2.03	-0.11	-2.03	

RECEIVED
Office of Oil and Gas
FEB 17 2023
WV Department of
Environmental Protection



Actual Wellpath Report

Alpine East Unit 2H AWP Proj: 22152'
Page 9 of 13



REFERENCE WELLPATH IDENTIFICATION				
Operator	ANTERO RESOURCES CORPORATION		Well	Alpine East Unit 2H
Field	Tyler		API	47-095-02597-0000
Facility	Sine Pad		Wellbore	Alpine East Unit 2H AWB
Slot	Slot #04			

WELLPATH DATA (247 stations)																
MD (ft)	Inclination (°)	Azimuth (°)	TVD (ft)	Vert Sect (ft)	North (ft)	East (ft)	Grid East (US ft)	Grid North (US ft)	Latitude	Longitude	Closure Dist (ft)	Closure Dir (°)	DLS (°/100ft)	Build Rate (°/100ft)	Turn Rate (°/100ft)	Comments
18850.00	90.180	336.080	6044.34	12377.76	11997.24	-3220.41	1649259.79	14325069.60	39°26'52.9576"N	80°58'7.2290"W	12421.95	344.974	1.52	0.03	-1.52	
18945.00	90.220	335.670	6044.01	12472.50	12083.95	-3259.24	1649220.98	14325156.27	39°26'53.8146"N	80°58'7.7236"W	12515.77	344.906	0.43	0.04	-0.43	
19039.00	90.400	335.890	6043.50	12566.22	12169.67	-3297.80	1649182.43	14325241.96	39°26'54.6620"N	80°58'8.2148"W	12608.58	344.838	0.30	0.19	0.23	
19134.00	90.340	337.010	6042.88	12661.02	12256.76	-3335.76	1649144.49	14325329.01	39°26'55.5228"N	80°58'8.6982"W	12702.57	344.775	1.18	-0.06	1.18	
19228.00	90.370	336.940	6042.30	12754.88	12343.26	-3372.52	1649107.74	14325415.48	39°26'56.3780"N	80°58'9.1665"W	12795.71	344.718	0.08	0.03	-0.07	
19323.00	90.310	336.900	6041.74	12849.73	12430.66	-3409.76	1649070.52	14325502.84	39°26'57.2418"N	80°58'9.6409"W	12889.83	344.661	0.08	-0.06	-0.04	
19417.00	90.310	337.860	6041.23	12943.62	12517.43	-3445.92	1649034.38	14325589.57	39°26'58.0995"N	80°58'10.1013"W	12983.08	344.608	1.02	0.00	1.02	
19512.00	90.310	339.450	6040.71	13038.58	12605.91	-3480.49	1648999.81	14325678.02	39°26'58.9741"N	80°58'10.5417"W	13077.56	344.565	1.67	0.00	1.67	
19606.00	90.280	339.920	6040.23	13132.58	12694.06	-3513.13	1648967.19	14325766.13	39°26'59.8455"N	80°58'10.9574"W	13171.22	344.530	0.50	-0.03	0.50	
19701.00	90.310	340.570	6039.74	13227.57	12783.46	-3545.24	1648935.10	14325855.51	39°27'0.7292"N	80°58'11.3663"W	13265.96	344.500	0.68	0.03	0.68	
19795.00	89.750	341.390	6039.69	13321.56	12872.33	-3575.87	1648904.48	14325944.34	39°27'1.6076"N	80°58'11.7564"W	13359.78	344.475	1.06	-0.60	0.87	
19889.00	89.940	342.520	6039.95	13415.51	12961.71	-3604.99	1648875.37	14326033.68	39°27'2.4911"N	80°58'12.1272"W	13453.69	344.457	1.22	0.20	1.20	
19984.00	89.780	343.580	6040.18	13510.39	13052.58	-3632.68	1648847.69	14326124.51	39°27'3.3893"N	80°58'12.4799"W	13548.66	344.447	1.13	-0.17	1.12	
20078.00	89.780	343.890	6040.54	13604.20	13142.81	-3659.01	1648821.37	14326214.71	39°27'4.2812"N	80°58'12.8151"W	13642.65	344.443	0.33	0.00	0.33	
20173.00	89.910	343.980	6040.80	13698.99	13234.10	-3685.30	1648795.09	14326305.97	39°27'5.1836"N	80°58'13.1499"W	13737.65	344.439	0.17	0.14	0.09	
20267.00	89.820	342.800	6041.02	13792.84	13324.18	-3712.17	1648768.23	14326396.00	39°27'6.0739"N	80°58'13.4920"W	13831.63	344.432	1.26	-0.10	-1.26	
20362.00	89.880	340.790	6041.27	13887.80	13414.42	-3741.85	1648738.57	14326486.21	39°27'6.9659"N	80°58'13.8700"W	13926.52	344.414	2.12	0.06	-2.12	
20456.00	90.280	338.930	6041.14	13981.79	13502.67	-3774.21	1648706.21	14326574.42	39°27'7.8382"N	80°58'14.2822"W	14020.23	344.383	2.02	0.43	-1.98	
20551.00	90.150	337.320	6040.78	14076.73	13590.82	-3809.61	1648670.83	14326662.54	39°27'8.7096"N	80°58'14.7331"W	14114.66	344.341	1.70	-0.14	-1.69	
20645.00	90.280	336.320	6040.43	14170.57	13677.23	-3846.61	1648633.85	14326748.92	39°27'9.5637"N	80°58'15.2044"W	14207.85	344.292	1.07	0.14	-1.06	
20740.00	90.250	335.640	6039.99	14265.32	13764.01	-3885.27	1648595.20	14326835.65	39°27'10.4215"N	80°58'15.6970"W	14301.86	344.237	0.72	-0.03	-0.72	
20835.00	90.180	335.920	6039.63	14360.04	13850.64	-3924.25	1648556.24	14326922.26	39°27'11.2779"N	80°58'16.1935"W	14395.83	344.181	0.30	-0.07	0.29	
20929.00	90.250	336.660	6039.28	14453.83	13936.71	-3962.05	1648518.46	14327008.29	39°27'12.1286"N	80°58'16.6750"W	14488.95	344.130	0.79	0.07	0.79	
21024.00	90.340	337.690	6038.79	14548.70	14024.27	-3998.90	1648481.62	14327095.81	39°27'12.9941"N	80°58'17.1444"W	14583.25	344.085	1.09	0.09	1.08	
21118.00	90.370	339.150	6038.21	14642.65	14111.67	-4033.47	1648447.06	14327183.18	39°27'13.8581"N	80°58'17.5848"W	14676.79	344.049	1.55	0.03	1.55	
21213.00	90.250	341.170	6037.69	14737.64	14201.03	-4065.71	1648414.83	14327272.50	39°27'14.7413"N	80°58'17.9954"W	14771.57	344.024	2.13	-0.13	2.13	
21308.00	90.150	341.220	6037.36	14832.63	14290.96	-4096.33	1648384.22	14327362.39	39°27'15.6302"N	80°58'18.3855"W	14866.45	344.006	0.12	-0.11	0.05	
21402.00	90.150	339.770	6037.11	14926.62	14379.56	-4127.72	1648352.85	14327450.96	39°27'16.5060"N	80°58'18.7852"W	14960.27	343.984	1.54	0.00	-1.54	
21497.00	90.220	340.330	6036.81	15021.62	14468.86	-4160.13	1648320.45	14327540.22	39°27'17.3887"N	80°58'19.1981"W	15055.05	343.959	0.59	0.07	0.59	
21592.00	90.220	341.180	6036.44	15116.62	14558.55	-4191.44	1648289.15	14327629.88	39°27'18.2752"N	80°58'19.5969"W	15149.90	343.939	0.89	0.00	0.89	

RECEIVED
Office of Oil and Gas
FEB 17 2023
WV Department of
Environmental Protection



Actual Wellpath Report

Alpine East Unit 2H AWP Proj: 22152'
Page 10 of 13



REFERENCE WELLPATH IDENTIFICATION				
Operator	ANTERO RESOURCES CORPORATION		Well	Alpine East Unit 2H
Field	Tyler		API	47-095-02597-0000
Facility	Sine Pad		Wellbore	Alpine East Unit 2H AWB
Slot	Slot #04			

WELLPATH DATA (247 stations) † = interpolated, ‡ = extrapolated station																
MD [ft]	Inclination [°]	Azimuth [°]	TVD [ft]	Vert Sect [ft]	North [ft]	East [ft]	Grid East [US ft]	Grid North [US ft]	Latitude	Longitude	Closure Dist [ft]	Closure Dir [°]	DLS ["/100ft]	Build Rate ["/100ft]	Turn Rate ["/100ft]	Comments
21686.00	90.250	342.400	6036.06	15210.57	14647.84	-4220.82	1648259.79	14327719.13	39°27'19.1578"N	80°58'19.9710"W	15243.83	343.926	1.30	0.03	1.30	
21781.00	90.250	342.270	6035.64	15305.50	14738.36	-4249.64	1648230.97	14327809.61	39°27'20.0525"N	80°58'20.3382"W	15338.80	343.916	0.14	0.00	-0.14	
21876.00	90.370	341.850	6035.13	15400.45	14828.74	-4278.91	1648201.72	14327899.96	39°27'20.9459"N	80°58'20.7109"W	15433.74	343.904	0.46	0.13	-0.44	
21971.00	90.220	343.190	6034.64	15495.36	14919.35	-4307.44	1648173.20	14327990.53	39°27'21.8415"N	80°58'21.0743"W	15528.71	343.896	1.42	-0.16	1.41	
22065.00	90.340	343.880	6034.18	15589.20	15009.49	-4334.08	1648146.57	14328080.64	39°27'22.7325"N	80°58'21.4136"W	15622.71	343.894	0.75	0.13	0.73	
22127.00	90.490	344.630	6033.73	15651.03	15069.16	-4350.90	1648129.75	14328140.29	39°27'23.3223"N	80°58'21.6279"W	15684.71	343.895	1.23	0.24	1.21	
22152.00‡	90.490	344.630	6033.52	15675.96	15093.27	-4357.53	1648123.13	14328164.38	39°27'23.5606"N	80°58'21.7122"W	15709.70	343.896	0.00	0.00	0.00	Projected MD at TD: 22152' MD

HOLE & CASING SECTIONS - Ref Wellbore: Alpine East Unit 2H AWB Ref Wellpath: Alpine East Unit 2H AWP Proj: 22152'										
String/Diameter	Start MD [ft]	End MD [ft]	Interval [ft]	Start TVD [ft]	End TVD [ft]	Start N/S [ft]	Start E/W [ft]	End N/S [ft]	End E/W [ft]	
20in Conductor	30.00	110.00	80.00	30.00	110.00	0.00	0.00	0.11	-0.02	
17.5in Open Hole	110.00	370.90	260.90	110.00	370.90	0.11	-0.02	0.41	0.04	
13.375in Casing Surface	30.00	370.90	340.90	30.00	370.90	0.00	0.00	0.41	0.04	
12.25in Open Hole	370.90	2618.00	2247.10	370.90	2617.07	0.41	0.04	-1.23	2.16	
9.625in Casing Intermediate	30.00	2598.50	2568.50	30.00	2597.57	0.00	0.00	-1.11	2.27	
8.75in Open Hole	2618.00	5377.00	2759.00	2617.07	5254.27	-1.23	2.16	-198.17	714.28	
8.5in Open Hole	5377.00	22152.00	16775.00	5254.27	6033.52	-198.17	714.28	15093.27	-4357.53	
5.5in Casing Production	30.00	22152.00	22122.00	30.00	6033.52	0.00	0.00	15093.27	-4357.53	

RECEIVED
 Office of Oil and Gas
 FEB 17 2023
 WV Department of
 Environmental Protection



Actual Wellpath Report

Alpine East Unit 2H AWP Proj: 22152'
Page 11 of 13



REFERENCE WELLPATH IDENTIFICATION			
Operator	ANTERO RESOURCES CORPORATION	Well	Alpine East Unit 2H
Field	Tyler	API	47-095-02597-0000
Facility	Sine Pad	Wellbore	Alpine East Unit 2H AWB
Slot	Slot #04		

TARGETS								
Name	TVD [ft]	North [ft]	East [ft]	Grid East [US ft]	Grid North [US ft]	Latitude	Longitude	Shape
Alpine East Unit 2H - POE - Plat	6045.00	315.95	979.48	1653458.00	14313393.00	39°24'57.4879"N	80°57'13.7681"W	point
Alpine East Unit 2H POE Rev-2	6049.00	284.29	862.37	1653340.93	14313361.35	39°24'57.1756"N	80°57'15.2605"W	point
Alpine East Unit 2H - BHL - Plat	6081.00	15106.89	-4363.66	1648117.00	14328178.00	39°27'23.6953"N	80°58'21.7904"W	point
Alpine East Unit 2H AZI Rev-1	6085.00	990.09	736.48	1653215.10	14314066.87	39°25'4.1520"N	80°57'16.8599"W	point
Alpine East Unit 2H BHL Rev-2	6085.00	15128.61	-4371.07	1648109.60	14328199.71	39°27'23.9099"N	80°58'21.8847"W	point
Alpine East Unit 2H LP Rev-2	6085.00	507.65	842.83	1653321.40	14313584.62	39°24'59.3832"N	80°57'15.5080"W	point
Alpine East Unit 2H 50' L/R Hard Line	6250.00	8059.35	-1817.29	1650662.35	14321133.29	39°26'14.0323"N	80°57'49.3633"W	rectangle
2D Rectangle 15032.8 x 100.								

RECEIVED
 Office of Oil and Gas
FEB 17 2023
 WV Department of
 Environmental Protection



Actual Wellpath Report

Alpine East Unit 2H AWP Proj: 22152'
Page 12 of 13



REFERENCE WELLPATH IDENTIFICATION			
Operator	ANTERO RESOURCES CORPORATION	Well	Alpine East Unit 2H
Field	Tyler	API	47-095-02597-0000
Facility	Sine Pad	Wellbore	Alpine East Unit 2H AWB
Slot	Slot #04		

WELLPATH COMPOSITION - Ref Wellbore: Alpine East Unit 2H AWB Ref Wellpath: Alpine East Unit 2H AWP Proj: 22152'					
Start MD [ft]	End MD [ft]	Positional Uncertainty Model	Log Name/Comment	Wellbore	Survey Date
30.00	267.00	Gyrodatta 2015 - GC+WIR+DPIPE	01_Gyrodatta MS Gyro <17-1/2">(100'-267')	Alpine East Unit 2H AWB	4/27/2020
267.00	2546.00	BH NaviTrak (2019) (Axial)	02_APS EM <12-1/4">(267')(415'-2546')	Alpine East Unit 2H AWB	4/27/2020
2546.00	5307.00	BH NaviTrak (2019) (Axial)	03_APS EM <8-3/4">(2546')(2659'-5307')	Alpine East Unit 2H AWB	4/27/2020
5307.00	22152.00	BH AutoTrak Curve (2019) (Short spacing)	04_BH AT Curve <8-1/2">(5307')(5427'-22127')	Alpine East Unit 2H AWB	4/27/2020

RECEIVED
 Office of Oil and Gas
FEB 17 2023
 WV Department of
 Environmental Protection



Actual Wellpath Report

Alpine East Unit 2H AWP Proj: 22152'
Page 13 of 13



REFERENCE WELLPATH IDENTIFICATION			
Operator	ANTERO RESOURCES CORPORATION	Well	Alpine East Unit 2H
Field	Tyler	API	47-095-02597-0000
Facility	Sine Pad	Wellbore	Alpine East Unit 2H AWB
Slot	Slot #04		

COMMENTS
<p>Wellpath general comments API: 47-095-02597-0000 BHI Job #: 110392706B Rig: H&P 519 Duration: 04/28/2020-06/01/2020 Gyrodata MS Gyro <17-1/2">(100'-267') APS EM <12-1/4">(267')(415'-2546') APS EM <8-3/4"> (2546')(2659'-5307') BH AT Curve <8-1/2">(5307')(5427'-22127') Middlesex: 6141' MD Burkett: 6313' MD Marcellus POE: 6402' MD Projected MD at TD: 22152' MD</p>

RECEIVED
Office of Oil and Gas
FEB 17 2023
WV Department of
Environmental Protection

ANTERO RESOURCES CORPORATION

Location: Tyler County, WV
 Field: Tyler
 Facility: Sine Pad

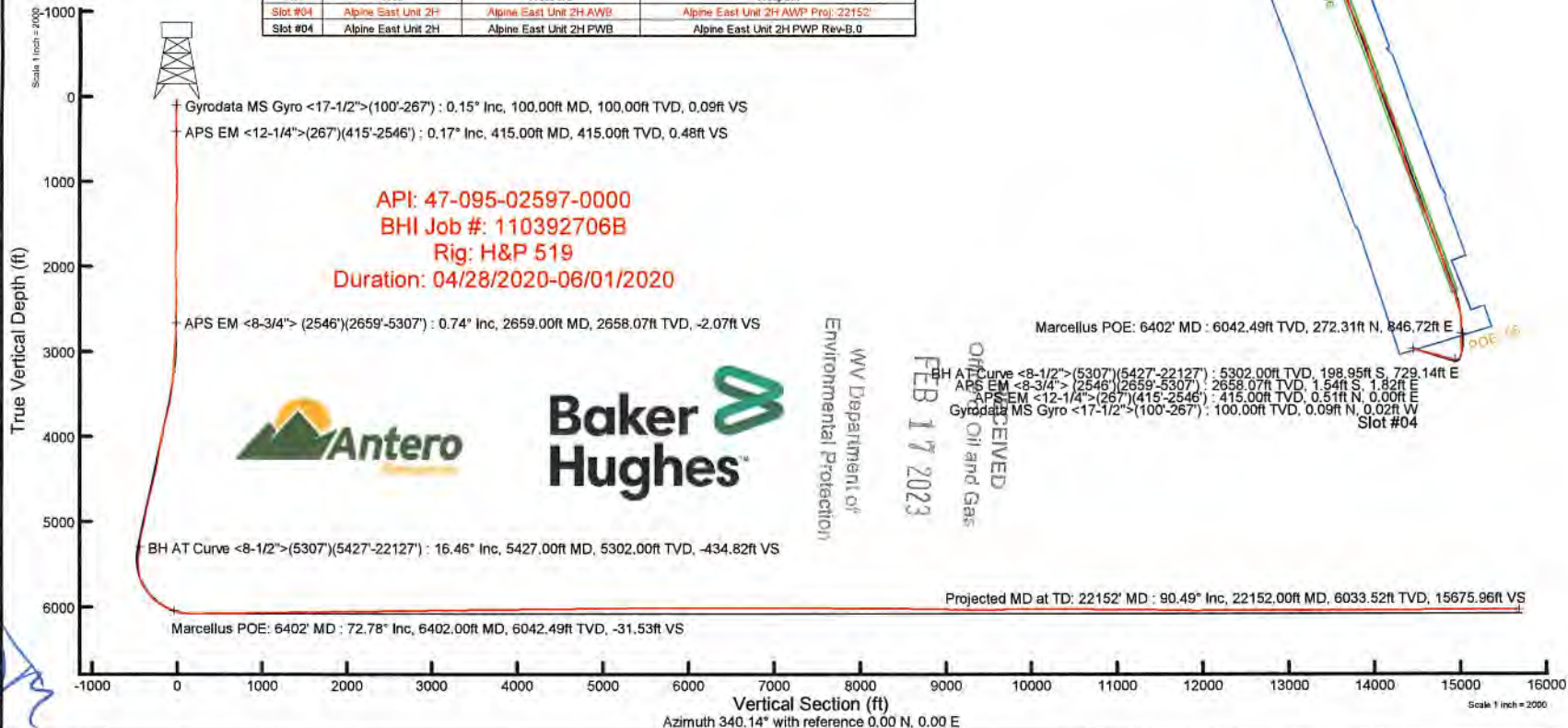
Slot: Slot #04
 Well: Alpine East Unit 2H
 Wellbore: Alpine East Unit 2H PWB

Plot reference wellbore is Alpine East Unit 2H PWP Rev-B.0	Grid System: NAD2011 UTM Zone 17 North, US feet
True vertical depths are referenced to H&P 519 (RKB)	North Reference: Grid north
Reference wellbore measured depths are referenced to H&P 519 (RKB)	Scale: True distance
H&P 519 (RKB) to Mean Sea Level: 523 feet	Coordinates are in feet referenced to Slot
Mean Sea Level to Ground level (At Slot: Slot #04): -790 feet	Depths are in feet
Offset wellbore MDs are referenced to each well's offset MD datum	Created by: updated on 2020-06-18; Database: WVA_MPL_Extremus_Delta

Location Information					
Facility Name	Grid East (US ft)	Grid North (US ft)	Latitude	Longitude	
Sine Pad	1652653.898	14313961.060	39°24'54.2100"N	80°57'24.0200"W	
Slot	Local N (ft)	Local E (ft)	Grid East (US ft)	Grid North (US ft)	Latitude
Slot #04	16,11	-175.03	1652478.909	14313077.179	39°24'54.3700"N
H&P 519 (RKB) to Ground level (At Slot: Slot #04)					30ft
Mean Sea Level to Ground level (At Slot: Slot #04)					-790ft
H&P 519 (RKB) to Mean Sea Level					829ft

Well Profile Data								
Design Comment	MD (ft)	Inc (")	Az (°)	TVD (ft)	Local N (ft)	Local E (ft)	DLS ("/100ft)	VS (ft)
Tie On	2548.00	0.240	194.530	2545.07	-0.84	2.44	0.83	-1.82
Proj. To Bottom	2618.00	0.240	194.530	2617.07	-1.13	2.35	0.00	-1.87
Drill Out Csg.	2718.00	0.240	194.530	2717.07	-1.54	2.25	0.00	-2.21
Hold Tangent	3708.62	19.822	107.157	3688.03	-53.61	163.83	2.00	-106.08
Curve KCP	5416.84	19.822	107.157	5295.04	-224.49	717.31	0.00	-454.83
POE	6417.28	71.757	355.000	6049.00	284.29	862.37	8.00	-25.59
Landing Pt.	6645.32	90.000	355.000	6085.00	507.65	842.83	8.00	191.13
On Azimuth	7140.73	90.000	340.138	6085.00	990.09	736.48	3.00	681.00
BHL	22173.52	90.000	340.138	6095.00	15128.61	-4371.07	0.00	15713.80

Well Data			
Slot	Well	Wellbore	Wellpath
Slot #04	Alpine East Unit 2H	Alpine East Unit 2H AWP	Alpine East Unit 2H AWP Proj: 22152'
Slot #04	Alpine East Unit 2H	Alpine East Unit 2H PWB	Alpine East Unit 2H PWP Rev-B.0

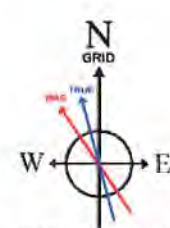


API: 47-095-02597-0000
BHI Job #: 110392706B
Rig: H&P 519
Duration: 04/28/2020-06/01/2020



WV Department of
 Environmental Protection
 RECEIVED
 Oil and Gas
 FEB 17 2023

Marcellus POE: 6402' MD : 6042.49ft TVD, 272.31ft N, 846.72ft E
 BH AT Curve <8-1/2'> (5307')(5427'-22127') : 5302.00ft TVD, 198.95ft S, 729.14ft E
 APS EM <8-3/4'> (2546')(2659'-5307') : 2658.07ft TVD, 1.54ft S, 1.82ft E
 APS EM <12-1/4'> (267')(415'-2546') : 415.00ft TVD, 0.51ft N, 0.00ft E
 Gyrodata MS Gyro <17-1/2'> (100'-267') : 100.00ft TVD, 0.09ft N, 0.02ft W
 Slot #04



User specified (HDGM) Dip: 66.39° Field: 51644 nT
 Magnetic North is 7.75 degrees West of True North (at 5/24/2020)
 Grid North is 0.03 degrees East of True North
 To correct azimuth from True to Grid subtract 0.03 degrees
 To correct azimuth from Magnetic to Grid subtract 7.78 degrees

