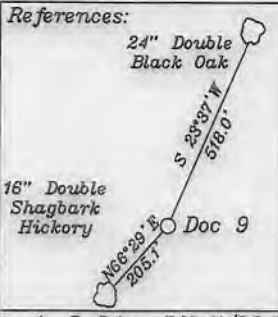
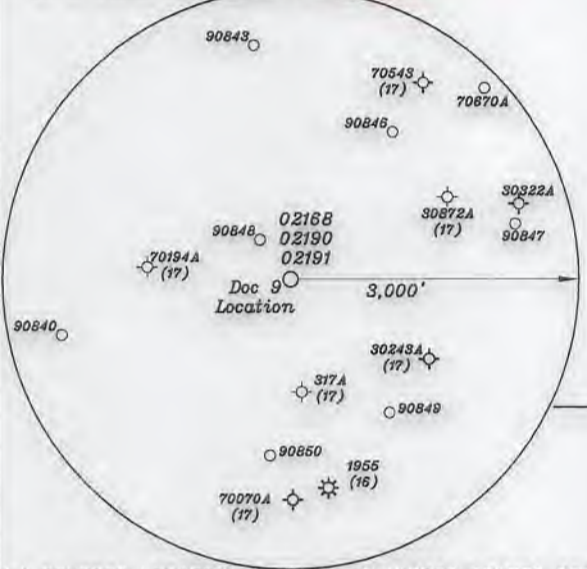
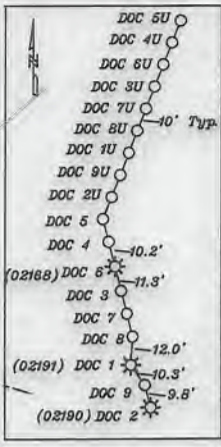
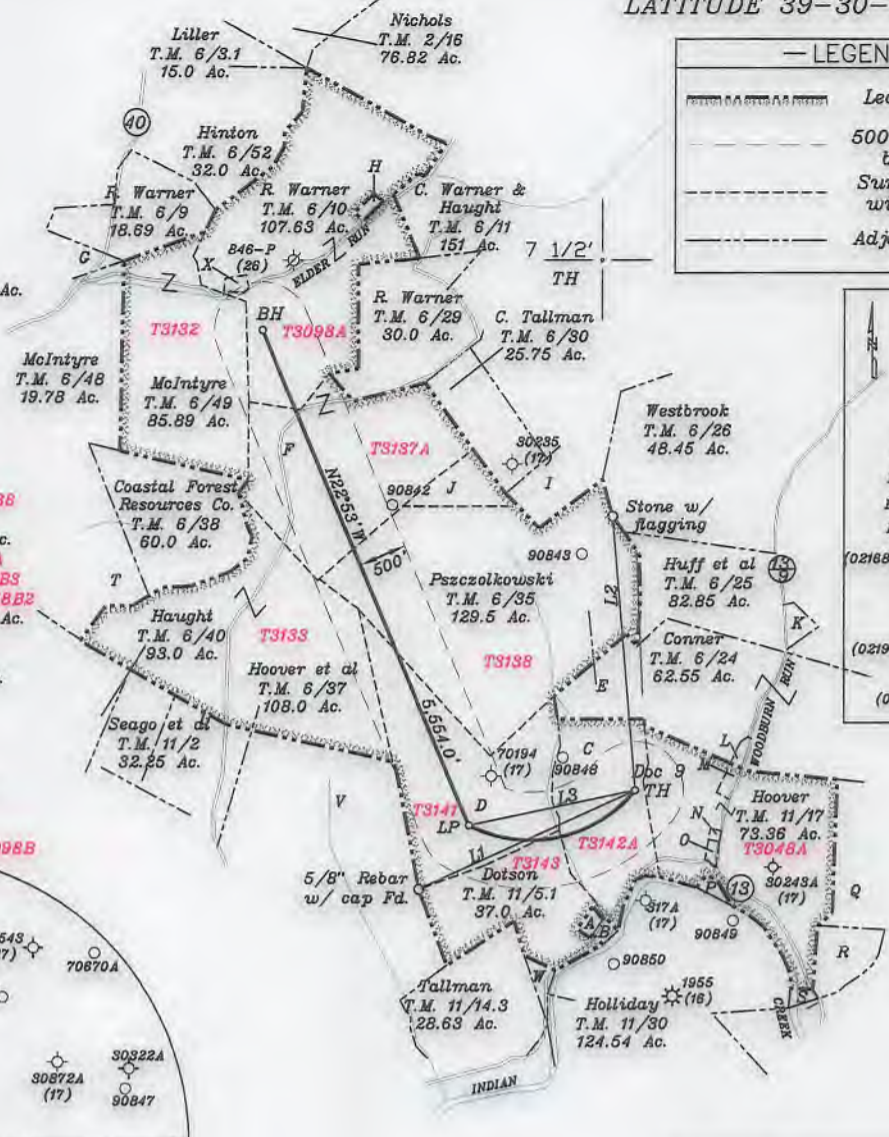


TH 5,139'
BH 9,089'
LATITUDE 39-27-30 N
LATITUDE 39-30-00 N



- A- R. Dotson T.M. 11/6.2 1.0 Ac.
- B- Straight T.M. 11/15 0.88 Ac.
- C- Tennant & Tustin T.M. 11/6 46.51 Ac.
- D- Dotson T.M. 11/5 62.0 Ac.
- E- Jay Bee Oil & Gas, Inc. T.M. 6/35.1 8.0 Ac.
- F- Coastal Forest Resources Co. Coastal Timberlands Co. T.M. 6/36 70.0 Ac.
- G- Big Run Methodist Church T.M. 6/51 2.0 Ac.
- H- R. Warner T.M. 6/10.1 0.368 Ac.
- I- Tallman T.M. 6/33 14.75 Ac.
- J- Westbrook T.M. 6/34 10.13 Ac. **TS138**
- K- Yeater et al T.M. 6/25.1 1.1 Ac.
- L- Fields & Leasure T.M. 11/52 1.25 Ac.
- M- Hoover T.M. 11/17.4 1.12 Ac. **TS048A**
- N- Hoover T.M. 11/17.2 0.25 Ac. **TS048BS**
- O- Lancaster T.M. 11/17.3 0.6 Ac. **TS048B2**
- P- Mt. Zion Cemetery T.M. 11/16 0.88 Ac.
- Q- Headley T.M. 11/8 95.511 Ac.
- R- Headley T.M. 11/33.1 9.227 Ac.
- S- Wilson & Black T.M. 11/17.1 0.65 Ac.
- T- Coastal Forest Resources Co. Coastal Timberlands Co. T.M. 6/39 23.0 Ac.
- U- Coastal Forest Resources Co. T.M. 11/3 119 Ac.
- V- Dave & Annie Underwood Estates. T.M. 11/4 136 Ac.
- W- Woodburn T.M. 11/14.1 2.0 Ac.
- X- R. Warner T.M. 6/10.2 1.25 Ac. **TS098B**



Top Hole - TH
Geo NAD 83- 39.449058 N, 80.768201 W
UTM NAD 83(Meters)-4366636.54 N, 519944.41 E
UTM NAD 83(Feet)-14326206.71 N, 1705850.95 E

Landing Point - LP
Geo NAD 83- 39.448009 N, 80.774305 W
UTM NAD 83(Meters)-4366518.88 N, 519944.41 E
UTM NAD 83(Feet)-14325820.70 N, 1704128.85 E

Bottom Hole - BH
Geo NAD 83- 39.461972 N, 80.782210 W
UTM NAD 83(Meters)-4368066.82 N, 518735.60 E
UTM NAD 83(Feet)-14330899.24 N, 1701885.06 E

NUMBER	DIRECTION	DISTANCE
L1	N65°38' E	2,471.9'
L2	S04°47' E	2,846.2'
L3	S78°19' W	1,765.4'

(+) DENOTES LOCATION OF WELL ON UNITED STATES TOPOGRAPHIC MAPS

FILE NO. _____
DRAWING NO. 1
SCALE 1" = 2000'
MINIMUM DEGREE OF ACCURACY 1 in 200
PROVEN SOURCE OF ELEVATION GPS
submeter unit

I THE UNDERSIGNED, HEREBY CERTIFY THAT THIS PLAT IS CORRECT TO THE BEST OF MY KNOWLEDGE AND BELIEF AND SHOWS ALL THE INFORMATION REQUIRED BY LAW AND THE RULES ISSUED AND PRESCRIBED BY THE DEPARTMENT OF ENVIRONMENTAL PROTECTION.

(SIGNED) David Jackson
R.P.E. _____ P.S. 708



STATE OF WEST VIRGINIA
Division of Environmental Protection
OFFICE OF OIL AND GAS

DATE January 26, 2018
OPERATOR'S WELL NO. Doc 9
API WELL NO. _____

WELL TYPE: OIL GAS LIQUID INJECTION WASTE DISPOSAL STATE COUNTY PERMIT
47 - 195 - 02626 H6A

(IF "GAS") PRODUCTION X STORAGE DEEP SHALLOW
LOCATION: ELEVATION 1,039.5' WATER SHED Indian Creek of Outlet Middle Island Creek (HUC-10)
DISTRICT McElroy COUNTY Tyler
QUADRANGLE Shirley 7 1/2'

SURFACE OWNER Francis W. Tennant Sr. & Randy W. Tustin ACREAGE 46.51 Ac.
OIL & GAS ROYALTY OWNER Arnold Schulberg LEASE ACREAGE 46.51 Ac.
LEASE NO. See Above

PROPOSED WORK: DRILL X CONVERT DRILL DEEPER REDRILL FRACTURE OR STIMULATE X PLUG OFF OLD FORMATION PERFORATE NEW FORMATION OTHER PHYSICAL CHANGE IN WELL (SPECIFY) _____

PLUG AND ABANDON CLEAN OUT AND REPLUG
TARGET FORMATION Marcellus ESTIMATED DEPTH TVD = 6,785'; TMD = 14,604'
WELL OPERATOR Jay-Bee Oil & Gas, Inc. DESIGNATED AGENT Randy Broda
ADDRESS 1720 Route 22 E, Union, NJ 07083 ADDRESS 3570 Shields Hill Rd., Cairo, WV 26337