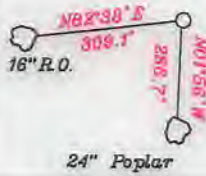
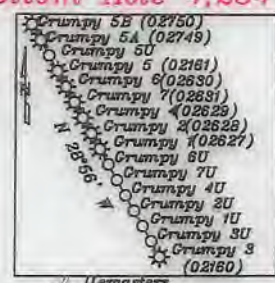


References:



LATITUDE 39-27-30 N

Legend table with symbols for 500' from well bore path, Surface Tracts Within Lease, Lease Line, and Adjoiner Line.

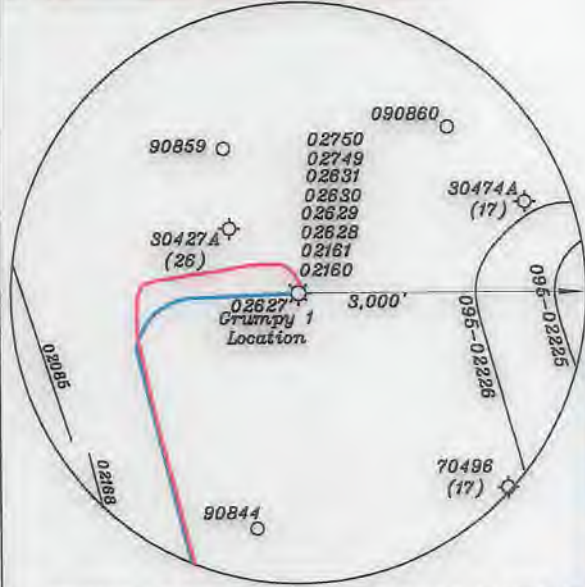


- List of land parcels with owner names and acreage, such as McIntyre, Fields & Leasure, Clark, Yeater, etc.

Note: All wells within 500' of the horizontal leg are shown on this plat based upon information taken from DEP mapping, well plats & aerial photos.

Table with columns: NUMBER, DIRECTION, DISTANCE. Lists bearings and distances for lines L1, L2, and L3.

NORTH



Coordinate tables for Top Hole-TH, Landing Point-LP, and Bottom Hole-BH in Geo NAD 83, UTM NAD 83 (Meters), and UTM NAD 83 (Feet).

Coordinate tables for Top Hole-TH, Landing Point-LP, and Bottom Hole-BH in Geo NAD 83, UTM NAD 83 (Meters), and UTM NAD 83 (Feet).

(+) DENOTES LOCATION OF WELL ON UNITED STATES TOPOGRAPHIC MAPS

Form fields for FILE NO., DRAWING NO., SCALE, MINIMUM DEGREE OF ACCURACY, PROVEN SOURCE OF ELEVATION, and submeter unit.

I THE UNDERSIGNED, HEREBY CERTIFY THAT THIS PLAT IS CORRECT TO THE BEST OF MY KNOWLEDGE AND BELIEF AND SHOWS ALL THE INFORMATION REQUIRED BY LAW AND THE RULES ISSUED AND PRESCRIBED BY THE DEPARTMENT OF ENVIRONMENTAL PROTECTION.

(SIGNED) David L Jackson, R.P.E., P.S. 708



Main well permit form with fields for STATE OF WEST VIRGINIA, DATE June 15, 2022, OPERATOR'S WELL NO. Crumphy 1, API WELL NO. 47-095-02627, WELL TYPE: GAS X LIQUID INJECTION, LOCATION: ELEVATION 1,299.3', DISTRICT McElroy, COUNTY Tyler, SURFACE OWNER Diana Samson, OIL & GAS ROYALTY OWNER Diana Samson, LEASE NO. See above, PROPOSED WORK: DRILL, ESTIMATED DEPTH TVD = 7,063', TMD = 13,222', WELL OPERATOR Jay-Bee Oil & Gas, Inc., DESIGNATED AGENT Deborah Broda-Morgan.

LONGITUDE 80-45-00 W, LONGITUDE 80-45-00 W, LONGITUDE 80-45-00 W

03/17/2023