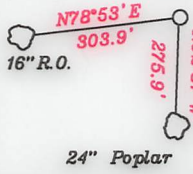


References:

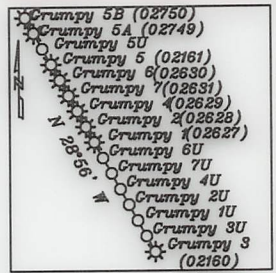
Grumpy 4



LATITUDE 39-27-30 N



Note: All wells within 500' of the horizontal leg are shown on this plat based upon information taken from DEP mapping, well plats & aerial photos.



- A- R. Thomas TM 12/ 1.4 14.997 Ac.
B- Headley TM 11/ 33.1 9.227 Ac.
C- Yeater, et al TM 6/ 25.1 1.1 Ac.
D- Titus TM 6/ 25.3 4.83 Ac.
E- Titus TM 6/ 25.2 1.08 Ac.
F- Diana Samson TM 6/ 19 42 Ac.
G- Edgar McHenry Trust TM 6/ 15 15.81 Ac.
H- Rayburn Heirs TM 6/ 16 15.82 Ac.
I- Eidle TM 7/ 17 23.73 Ac.
J- Eidle TM 7/ 18 26.36 Ac.
K- B.C. Farms Investments, LLC TM 7/19 22.85 Ac.

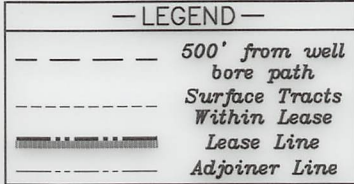
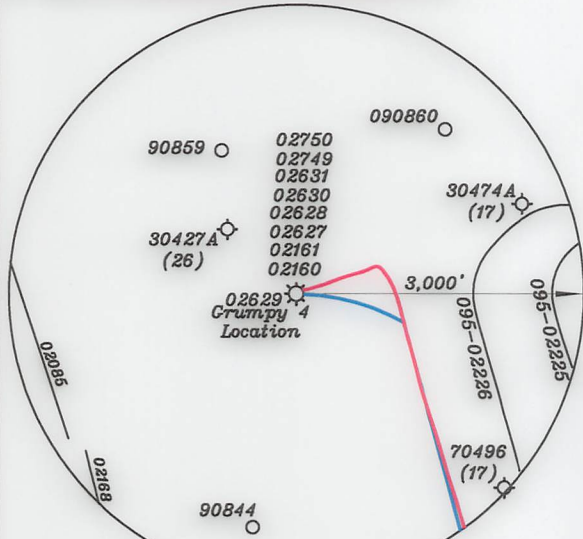


Table with 3 columns: NUMBER, DIRECTION, DISTANCE. Rows include L1 (S79°03'E, 1,914.1'), L2 (S51°55'E, 3,496.8'), L3 (S72°40'E, 1,183.5')

NORTH

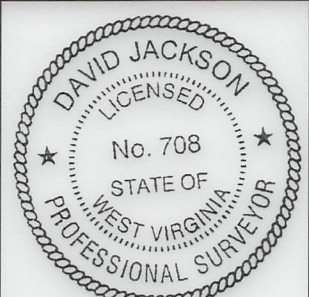


Coordinates table for Top Hole-TH, Landing Point-LP, and Bottom Hole-BH in Geo NAD 83, UTM NAD 83 (Meters), and UTM NAD 83 (Feet).

Coordinates table for Top Hole-TH, Landing Point-LP, and Bottom Hole-BH in Geo NAD 83, UTM NAD 83 (Meters), and UTM NAD 83 (Feet).

FILE NO., DRAWING NO. 1, SCALE 1" = 2000', MINIMUM DEGREE OF ACCURACY 1 in 200, PROVEN SOURCE OF ELEVATION GPS, submeter unit

I THE UNDERSIGNED, HEREBY CERTIFY THAT THIS PLAT IS CORRECT TO THE BEST OF MY KNOWLEDGE AND BELIEF AND SHOWS ALL THE INFORMATION REQUIRED BY LAW AND THE RULES ISSUED AND PRESCRIBED BY THE DEPARTMENT OF ENVIRONMENTAL PROTECTION. (SIGNED) David L Jackson R.P.E. P.S. 708



STATE OF WEST VIRGINIA Division of Environmental Protection OFFICE OF OIL AND GAS. DATE June 15, 2022. OPERATOR'S WELL NO. Grumpy 4. WELL TYPE: OIL GAS X LIQUID INJECTION WASTE DISPOSAL. LOCATION: ELEVATION 1,299.1' WATER SHED Woodburn Run of Outlet Middle Island Creek (HUC-10) DISTRICT McElroy COUNTY Tyler. SURFACE OWNER Diana Samson ACREAGE 42.0 Ac. OIL & GAS ROYALTY OWNER Diana Samson LEASE ACREAGE 42.0 Ac. LEASE NO. See above. PROPOSED WORK: DRILL CONVERT DRILL DEEPER REDRILL FRACTURE OR STIMULATE PLUG OFF OLD FORMATION PERFORATE NEW FORMATION OTHER PHYSICAL CHANGE IN WELL (SPECIFY) As Drilled. TARGET FORMATION Marcellus ESTIMATED DEPTH TVD = 7,078'; TMD = 15,800'. WELL OPERATOR Jay-Bee Oil & Gas, Inc. DESIGNATED AGENT Deborah Broda-Morgan. ADDRESS 16 South Avenue W, Ste 118, Cranford NJ 07016 ADDRESS 429 Simonton Road, Ellenboro WV 26346

LONGITUDE 80-45-00 W, LONGITUDE 80-45-00 W

05/17/2023