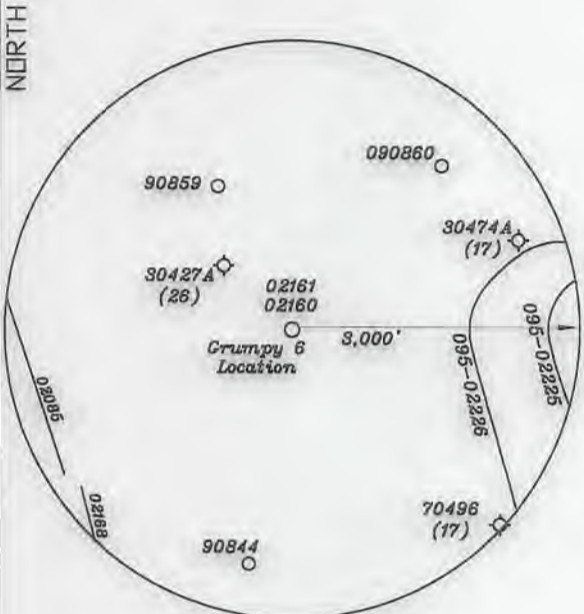
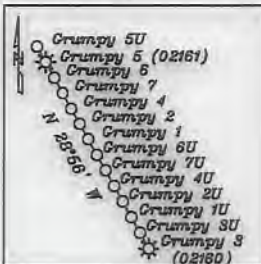
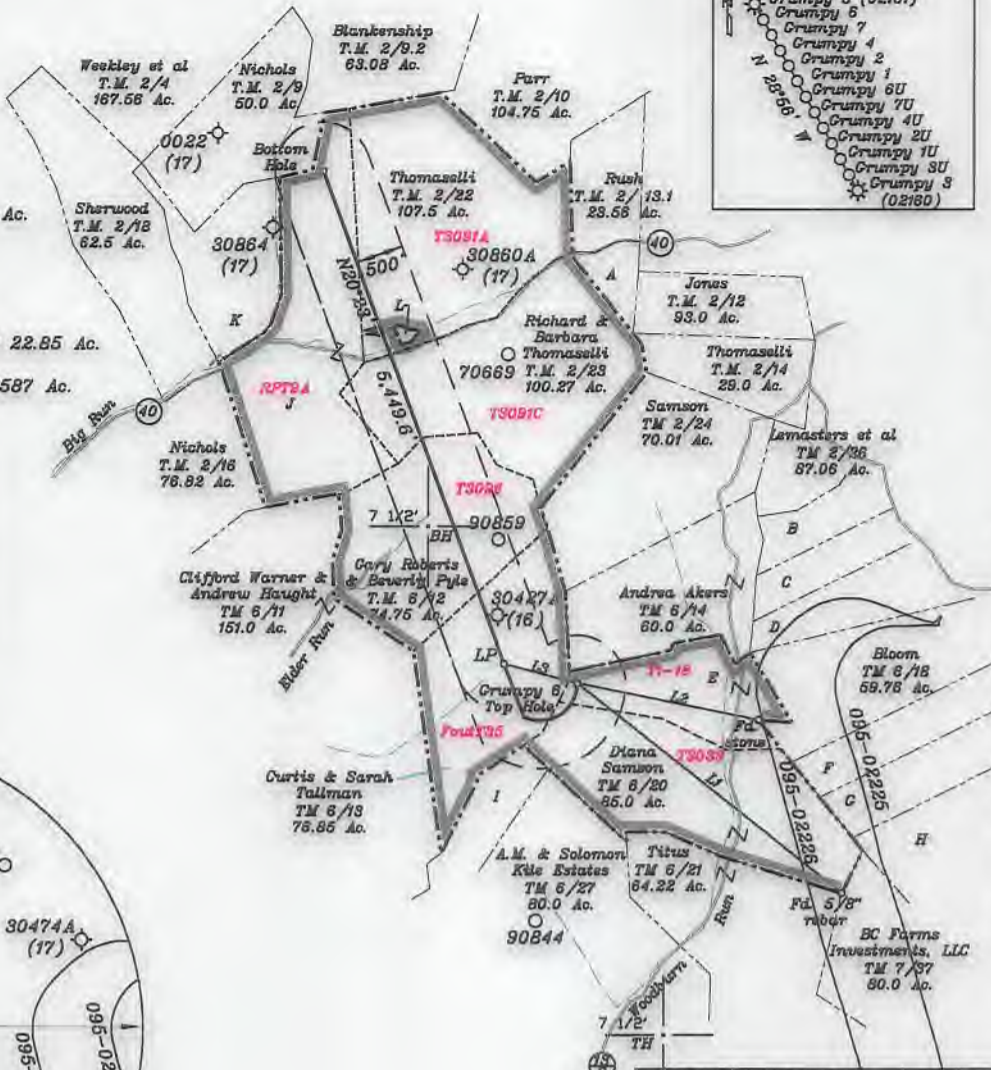
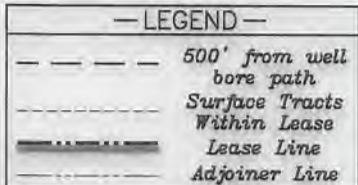


- A- Rush TM 2/13 8.88 Ac.
- B- Edgar McHenry Trust TM 6/16 15.81 Ac.
- C- Rayburn Heirs TM 6/16 15.82 Ac.
- D- Thompson TM 6/17 26.36 Ac.
- E- Diana Samson TM 6/19 42.0 Ac.
- F- Eidle TM 7/17 23.73 Ac.
- G- Eidle TM 7/18 26.36 Ac.
- H- BC Farms Investments, LLC TM 7/19 22.85 Ac.
- I- Westbrook TM 6/28 22.98 Ac.
- J- Charles & Deloris Hagan TM 2/21 91.587 Ac.
- K- Eldon Nichols TM 2/20 35.68 Ac.
- L- Thomaselli TM 2/22.1 0.5 Ac.



NUMBER	DIRECTION	DISTANCE
L1	N51°47'W	3,514.7'
L2	N78°35'W	1,926.2'
L3	N75°10'W	787.4'

Note: All wells within 500' of the horizontal leg are shown on this plat based upon information taken from DEP mapping, well plats & aerial photos.

Top Hole-TH
Geo NAD 83- 39.467725 N, 80.764212 W
UTM NAD 83(Meters)-4368709.16 N, 520282.10 E
UTM NAD 83(Feet)-14333006.62 N, 1706959.15 E

Landing Point-LP
Geo NAD 83- 39.488249 N, 80.766918 W
UTM NAD 83(Meters)-4368766.89 N, 520049.27 E
UTM NAD 83(Feet)-14333195.39 N, 1706194.97 E

Bottom Hole-BH
Geo NAD 83- 39.482198 N, 80.773900 W
UTM NAD 83(Meters)-4370313.27 N, 519444.85 E
UTM NAD 83(Feet)-14338269.46 N, 1704211.99 E

(+) DENOTES LOCATION OF WELL ON UNITED STATES TOPOGRAPHIC MAPS

FILE NO. _____
DRAWING NO. 1
SCALE 1" = 2000'
MINIMUM DEGREE OF ACCURACY 1 in 200
PROVEN SOURCE OF ELEVATION GPS
submeter unit

I THE UNDERSIGNED, HEREBY CERTIFY THAT THIS PLAT IS CORRECT TO THE BEST OF MY KNOWLEDGE AND BELIEF AND SHOWS ALL THE INFORMATION REQUIRED BY LAW AND THE RULES ISSUED AND PRESCRIBED BY THE DEPARTMENT OF ENVIRONMENTAL PROTECTION.

(SIGNED) David L Jackson
R.P.E. _____ P.S. 708



STATE OF WEST VIRGINIA
Division of Environmental Protection
OFFICE OF OIL AND GAS

DATE April 16, 2019
OPERATOR'S WELL NO. Crumphy 6
API WELL NO. 47-095-02630

WELL TYPE: OIL X GAS X LIQUID INJECTION _____ WASTE DISPOSAL _____
(IF "GAS") PRODUCTION X STORAGE _____ DEEP _____ SHALLOW X

LOCATION: ELEVATION 1,299.2' WATER SHED Woodburn Run of Outlet Middle Island Creek (HUC-10)
DISTRICT McElroy COUNTY Tyler
QUADRANGLE Shirley 7 1/2'

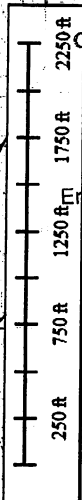
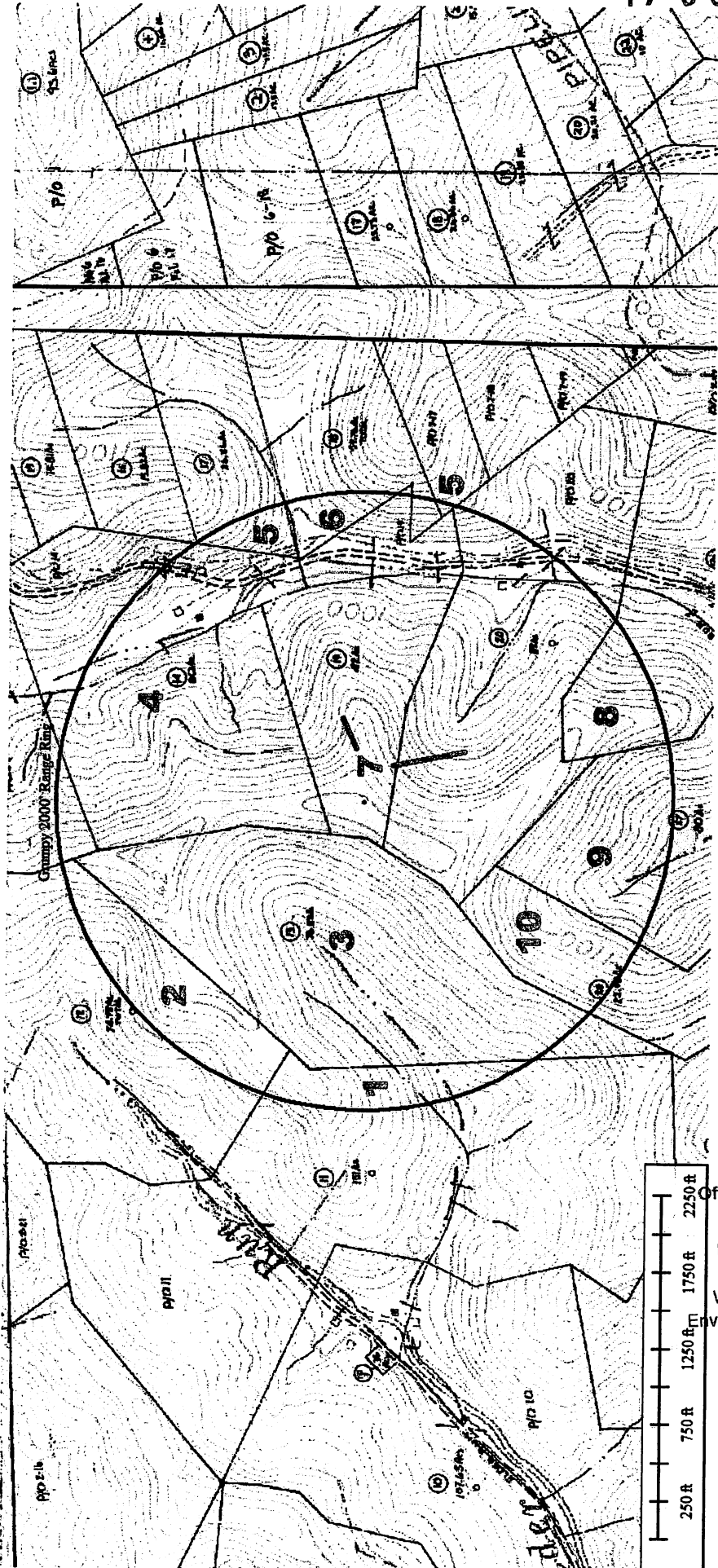
SURFACE OWNER Diana Samson ACREAGE 42.0 Ac.
OIL & GAS ROYALTY OWNER Diana Samson LEASE ACREAGE 42.0 Ac.
LEASE NO. See above

PROPOSED WORK: DRILL X CONVERT _____ DRILL DEEPER _____ REDRILL _____ FRACTURE OR STIMULATE X PLUG OFF OLD FORMATION _____ PERFORATE NEW FORMATION _____ OTHER PHYSICAL CHANGE IN WELL (SPECIFY) _____

PLUG AND ABANDON _____ CLEAN OUT AND REPLUG _____
TARGET FORMATION Marcellus ESTIMATED DEPTH TVD = 7,075'; TMD = 13,812'
WELL OPERATOR Jay-Bee Oil & Gas, Inc. DESIGNATED AGENT Randy Broda
ADDRESS 1720 Route 22 E, Union, NJ 07083 ADDRESS 3570 Shields Hill Rd., Cairo, WV 26337

LONGITUDE 80-45-00 W Bottom Hole 6,485'
LONGITUDE 80-45-00 W Top Hole 11,757'

47 09 02630



RECEIVED
Office of Oil and Gas

MAY 22 2019

WV Department of
Environmental Protection