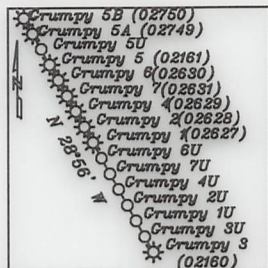
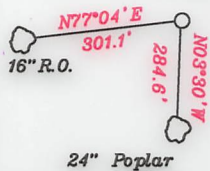


References:

Grumpy 7



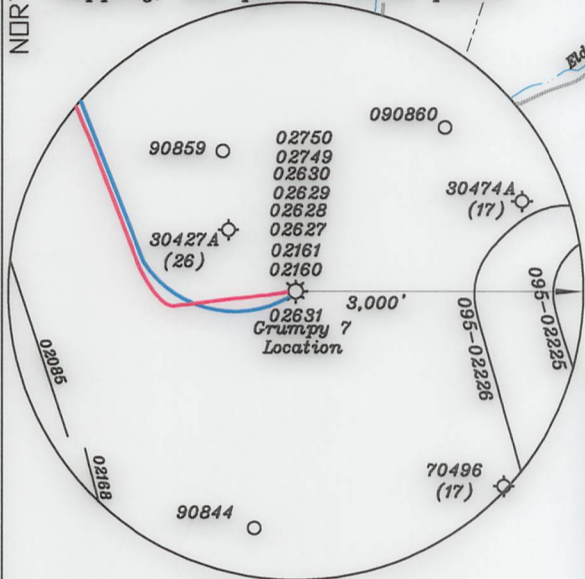
- A- Edgar McHenry Trust TM 6/15 15.81 Ac.
- B- Rayburn Heirs TM 6/16 15.82 Ac.
- C- Thompson TM 6/17 26.36 Ac.
- D- Diana Samson TM 6/19 42.0 Ac.
- E- Fidle TM 7/17 23.73 Ac.
- F- Fidle TM 7/18 26.36 Ac.
- G- BC Farms Investments, LLC TM 7/19 22.85 Ac.
- H- Westbrook TM 6/28 22.98 Ac.
- I- Tallman TM 6/31 14.75 Ac.
- J- Charles Hagan TM 2/21 91.587 Ac.
- K- Eldon Nichols TM 2/20 35.68 Ac.
- L- Rush TM 2/13 8.88 Ac.

LEGEND

- 500' from well bore path
- Surface Tracts Within Lease
- Lease Line
- Adjoiner Line

Note: All wells within 500' of the horizontal leg are shown on this plat based upon information taken from DEP mapping, well plats & aerial photos.

NORTH



<b>Top Hole-TH</b>	
Geo NAD 83-	39.467700 N, 80.764197 W
UTM NAD 83(Meters)-	4368706.42 N, 520583.53 E
UTM NAD 83(Feet)-	14332997.64 N, 1706963.54 E
<b>Landing Point-LP</b>	
Geo NAD 83-	39.468595 N, 80.768908 W
UTM NAD 83(Meters)-	4368804.47 N, 519792.01 E
UTM NAD 83(Feet)-	14333319.33 N, 1705350.96 E
<b>Bottom Hole-BH</b>	
Geo NAD 83-	39.481467 N, 80.776693 W
UTM NAD 83(Meters)-	4370231.45 N, 519204.84 E
UTM NAD 83(Feet)-	14338001.02 N, 1703424.56 E

NUMBER	DIRECTION	DISTANCE
L1	N51°51'W	3,505.9'
L2	N78°49'W	1,920.5'
L3	N76°30'W	1,720.3'

<b>Top Hole-TH</b>	
Geo NAD 83-	39.467700 N, 80.764198 W
UTM NAD 83(Meters)-	4368706.40 N, 520283.44 E
UTM NAD 83(Feet)-	14332997.57 N, 1706963.25 E
<b>Landing Point-LP</b>	
Geo NAD 83-	39.468738 N, 80.770142 W
UTM NAD 83(Meters)-	4368820.26 N, 519771.80 E
UTM NAD 83(Feet)-	14333371.12 N, 1705284.63 E
<b>Bottom Hole-BH</b>	
Geo NAD 83-	39.481441 N, 80.776718 W
UTM NAD 83(Meters)-	4370228.60 N, 519202.72 E
UTM NAD 83(Feet)-	143387991.66 N, 1703417.59 E

(+) DENOTES LOCATION OF WELL ON UNITED STATES TOPOGRAPHIC MAPS

FILE NO. \_\_\_\_\_  
 DRAWING NO. 1  
 SCALE 1" = 2000'  
 MINIMUM DEGREE OF ACCURACY 1 in 200  
 PROVEN SOURCE OF ELEVATION GPS  
submeter unit

I THE UNDERSIGNED, HEREBY CERTIFY THAT THIS PLAT IS CORRECT TO THE BEST OF MY KNOWLEDGE AND BELIEF AND SHOWS ALL THE INFORMATION REQUIRED BY LAW AND THE RULES ISSUED AND PRESCRIBED BY THE DEPARTMENT OF ENVIRONMENTAL PROTECTION.

(SIGNED) David L Jackson  
 R.P.E. \_\_\_\_\_ P.S. 708



STATE OF WEST VIRGINIA  
 Division of Environmental Protection  
 OFFICE OF OIL AND GAS

DATE June 16, 2022  
 OPERATOR'S WELL NO. Grumpy 7  
 API WELL NO. \_\_\_\_\_

WELL TYPE: OIL GAS LIQUID INJECTION X WASTE DISPOSAL \_\_\_\_\_ STATE 47 COUNTY 095 PERMIT 02631  
 (IF "GAS") PRODUCTION X STORAGE \_\_\_\_\_ DEEP \_\_\_\_\_ SHALLOW X

LOCATION: ELEVATION 1,298.9' WATER SHED Woodburn Run of Outlet Middle Island Creek (HUC-10)  
 DISTRICT McElroy COUNTY Tyler  
 QUADRANGLE Shirley 7 1/2'

SURFACE OWNER Diana Samson ACREAGE 42.0 Ac.  
 OIL & GAS ROYALTY OWNER Diana Samson LEASE ACREAGE 42.0 Ac.  
 LEASE NO. See above

PROPOSED WORK: DRILL \_\_\_\_\_ CONVERT \_\_\_\_\_ DRILL DEEPER \_\_\_\_\_ REDRILL \_\_\_\_\_ FRACTURE OR STIMULATE \_\_\_\_\_ PLUG OFF OLD FORMATION \_\_\_\_\_ PERFORATE NEW FORMATION \_\_\_\_\_ OTHER PHYSICAL CHANGE IN WELL (SPECIFY) As Drilled

PLUG AND ABANDON \_\_\_\_\_ CLEAN OUT AND REPLUG \_\_\_\_\_  
 TARGET FORMATION Marcellus ESTIMATED DEPTH TVD = 7,042'; TMD = 12,635'  
 WELL OPERATOR Jay-Bee Oil & Gas, Inc. DESIGNATED AGENT Deborah Broda-Morgan  
 ADDRESS 16 South Avenue W, Ste 118, Cranford NJ 07016 ADDRESS 429 Simonton Road, Ellenboro WV 26346

LONGITUDE 80-45-00 W Bottom Hole 6,760' Top Hole 11,765'

031172023