

ANTERO RESOURCES CORPORATION

Location: Tyler County, WV
 Field: Tyler
 Facility: Gamehenge East Pad

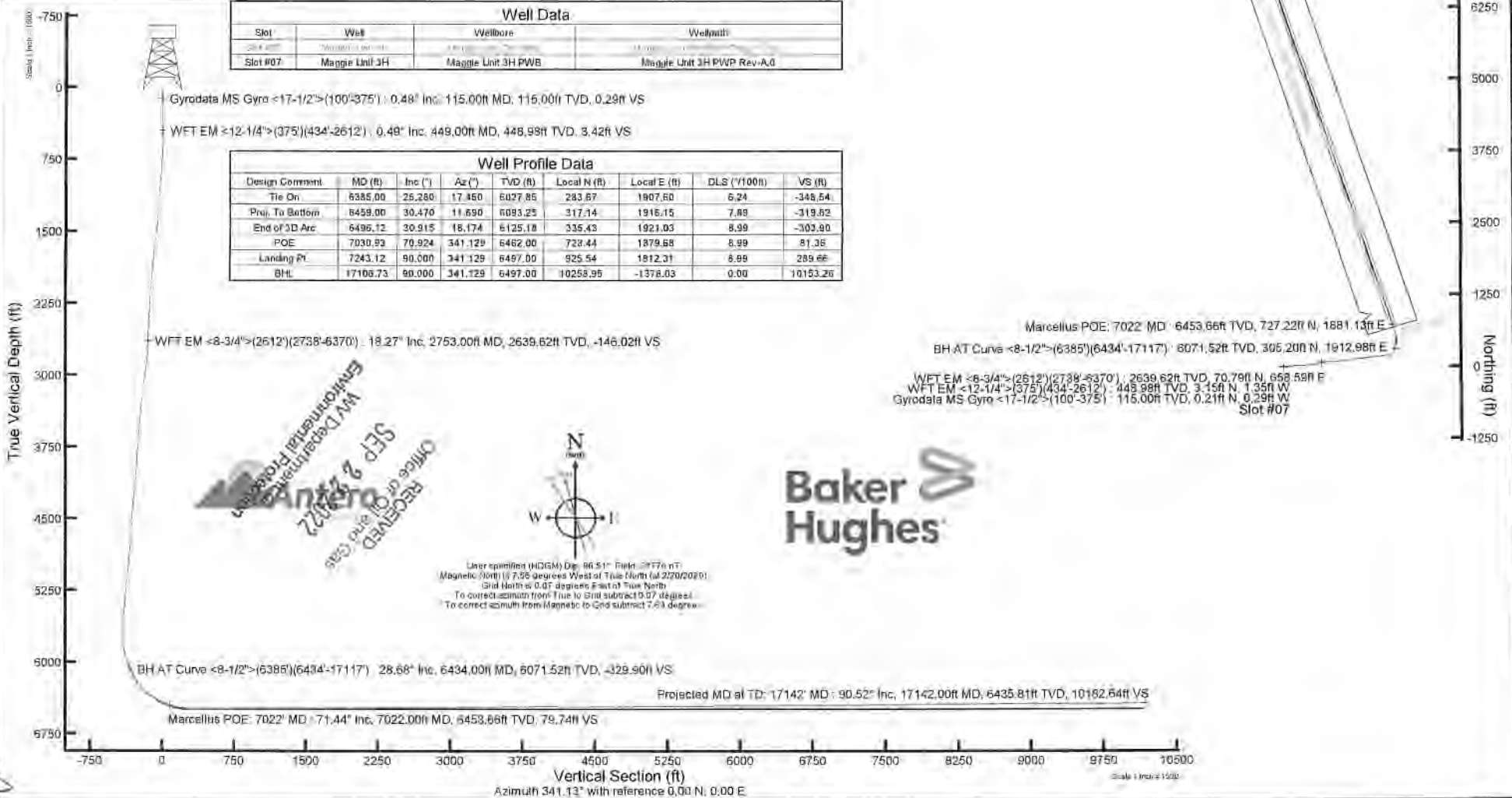
Slot: Slot #07
 Well: Maggie Unit 3H
 Wellbore: Maggie Unit 3H PWB

File name: support (Maggie Unit 3H PWB) W.A.0	Grid System: NAD83 UTM Zone 17 North US feet
Transverse datum: see reference to H&P 518 (RKB)	North reference: GDA 1984
Reference (depth measured) (depth) see reference to H&P 518 (RKB)	Scale: True (Metric)
H&P 518 (RKB) to Mean Sea Level (MSL) data	Coordinate system: referenced to GDA
Mean Sea Level to Ground level (At Slot: Slot #07)	Origin: unknown
Other wellbore IDs: see reference to support's display MD data	Created by: antero on 2023-07-04, Location: WA, NPS, East of US, Del

Location Information					
Facility Name:	Grid East (US ft)	Grid North (US ft)	Latitude	Longitude	
Gamehenge East Pad	1672924.899	14347540.047	39°30'34.946011N	80°53'10.4372°W	
Slot	Local N (ft)	Local E (ft)	Grid East (US ft)	Grid North (US ft)	Longitude
Slot #07	127.26	15.86	1672540.740	14447567.360	39°30'35.216011N
H&P 518 (RKB) to Ground level (At Slot: Slot #07)	30ft				
Mean Sea Level to Ground level (At Slot: Slot #07)	-105.1ft				
H&P 518 (RKB) to Mean Sea Level	109.1ft				

Well Data			
Slot	Well	Wellbore	Wellpath
Slot #07	Maggie Unit 3H	Maggie Unit 3H PWB	Maggie Unit 3H PWB Rev-A.0

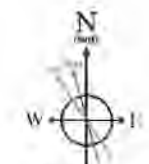
Well Profile Data							
Design Comment	MD (ft)	Inc (")	Az (°)	TVD (ft)	Local N (ft)	Local E (ft)	VS (ft)
Tie On	6385.00	25.280	17.460	6027.85	283.67	1907.50	6.24
Proj. To Bottom	6459.00	30.470	11.690	6093.25	317.14	1916.15	7.89
End of 3D Arc	6496.12	30.915	16.174	6125.18	335.43	1921.03	8.99
POE	7030.93	79.924	341.129	6462.00	728.44	1879.68	8.99
Landing Pt	7243.12	90.000	341.129	6497.00	925.54	1812.31	8.99
BHL	17106.73	90.000	341.129	6497.00	10258.95	-1378.03	0.00



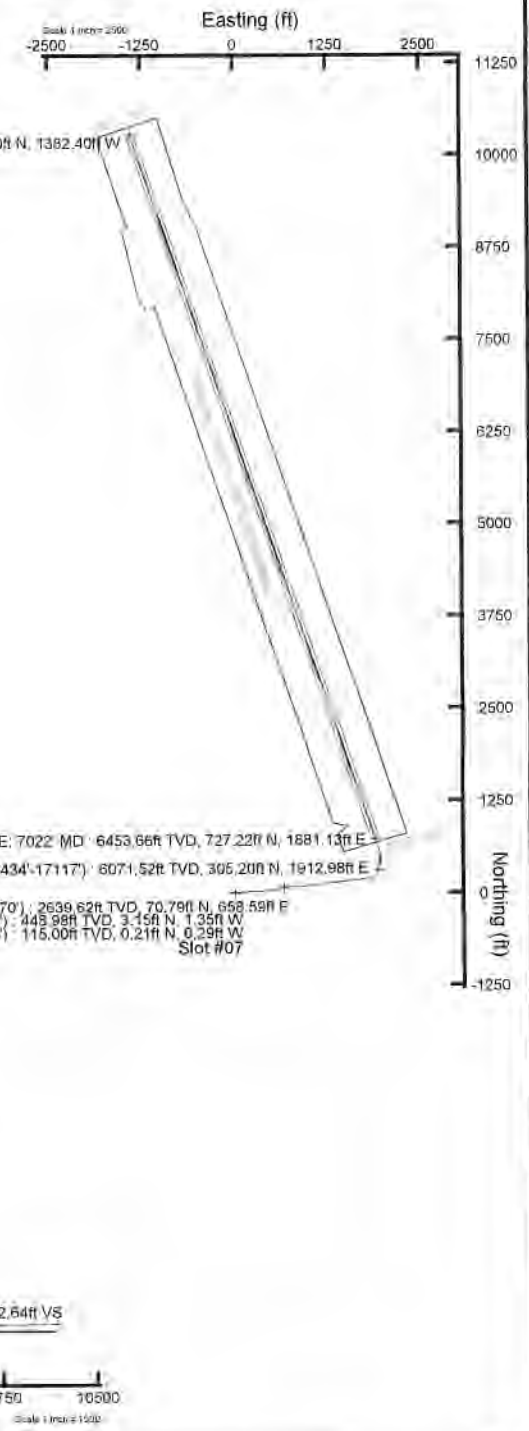
API #17142-02608-0005
 (H) 1608-1099871A
 Rq: H&P 519
 Duration: 02/22/2020-02/24/2020

Marcellus POE: 7022° MD : 6453.66ft TVD, 727.22ft N, 1881.13ft E
 BH AT Curve <8-1/2°>(6385)(6434°-17117) : 6071.52ft TVD, 305.20ft N, 1912.98ft E
 WFT EM <8-3/4°>(2612)(2738°-6370) : 2639.62ft TVD, 70.79ft N, 668.59ft E
 WFT EM <12-1/4°>(375)(434°-2612) : 449.99ft TVD, 3.45ft N, 1.35ft W
 Gyrodatta MS Gyro <17-1/2°>(100°375') : 115.00ft TVD, 0.29ft N, 0.29ft W
 Slot #07

RECEIVED
 Office of Oil and Gas
 SEP 2 2022
 WV Department of Environmental Protection



User specified (HDGM) Dip: 86.51° from 0° (True)
 Magnetic North is 7.35 degrees West of True North (at 270/2020)
 Grid North is 0.07 degrees East of True North
 To correct azimuth from True to Grid subtract 0.07 degrees
 To correct azimuth from Magnetic to Grid subtract 7.35 degrees





Actual Wellpath Report

Maggie Unit 3H AWP Proj: 17142'

Page 1 of 11



REFERENCE WELLPATH IDENTIFICATION			
Operator	ANTERO RESOURCES CORPORATION	Well	Maggie Unit 3H
Field	Tyler	API	47-095-02639-0000
Facility	Gamehenge East Pad	Wellbore	Maggie Unit 3H AWB
Slot	Slot #07		

REPORT SETUP INFORMATION			
Projection System	NAD27 / UTM Zone 17 North, US feet	Software System	WellArchitect® 6.0
North Reference	Grid	User	Delaset
Scale	0.999601	Report Generated	3/4/2020 at 10:54:08 AM
Convergence at slot	0.07° East	Database	WA_MPL_EasternUS_Defn

WELLPATH LOCATION						
	Local coordinates		Grid coordinates		Geographic coordinates	
	North[ft]	East[ft]	Easting[US ft]	Northing[US ft]	Latitude	Longitude
Slot Location	27.26	35.86	1672540.74	14347567.30	39°30'35.2150"N	80°53'9.9791"W
Facility Reference Pt			1672504.90	14347540.05	39°30'34.9460"N	80°53'10.4370"W
Field Reference Pt			0.00	0.00	0°00'0.0000"	85°29'19.3013"W

WELLPATH DATUM			
Calculation method	Minimum curvature	H&P 519 (RKB) to Facility Vertical Datum	1091.00ft
Horizontal Reference Pt	Slot	H&P 519 (RKB) to Mean Sea Level	1091.00ft
Vertical Reference Pt	H&P 519 (RKB)	H&P 519 (RKB) to Ground Level at Slot (Slot #07)	30.00ft
MD Reference Pt	H&P 519 (RKB)	Section Origin	N 0.00, E 0.00 ft
Field Vertical Reference	Mean Sea Level	Section Azimuth	341.13°



Actual Wellpath Report

Maggie Unit 3H AWP Proj: 17142'
Page 2 of 11



REFERENCE WELLPATH IDENTIFICATION				
Operator	ANTERO RESOURCES CORPORATION		Well	Maggie Unit 3H
Field	Tyler		API	47-095-02639-0000
Facility	Gamehenge East Pad		Wellbore	Maggie Unit 3H AWB
Slot	Slot #07			

WELLPATH DATA (201 stations) † = interpolated, ‡ = extrapolated station																
MD (ft)	Inclination (°)	Azimuth (°)	TVD (ft)	Vert Sect (ft)	North (ft)	East (ft)	Grid East (US ft)	Grid North (US ft)	Latitude	Longitude	Closure Dist (ft)	Closure Dir (°)	DLS (ft/100ft)	Build Rate (ft/100ft)	Turn Rate (ft/100ft)	Comments
0.00†	0.000	305.980	0.00	0.00	0.00	0.00	1672540.74	14347567.30	39°30'35.2150"N	80°53'9.9791"W	0.00	0.000	0.00	0.00	0.00	
30.00	0.000	305.980	30.00	0.00	0.00	0.00	1672540.74	14347567.30	39°30'35.2150"N	80°53'9.9791"W	0.00	0.000	0.00	0.00	0.00	
115.00	0.480	305.980	115.00	0.29	0.21	-0.29	1672540.45	14347567.51	39°30'35.2171"N	80°53'9.9827"W	0.36	305.980	0.56	0.56	0.00	Gyrodata MS Gyro <17-1/2">(100'-375')
215.00	0.420	345.070	215.00	1.00	0.81	-0.72	1672540.02	14347568.11	39°30'35.2230"N	80°53'9.9832"W	1.08	318.286	0.31	-0.06	39.09	
315.00	0.640	338.920	314.99	1.92	1.85	-1.02	1672539.72	14347568.98	39°30'35.2317"N	80°53'9.9920"W	1.97	328.886	0.23	0.22	-8.15	
390.00	0.730	344.800	389.99	2.82	2.54	-1.29	1672539.45	14347569.84	39°30'35.2401"N	80°53'9.9955"W	2.85	332.995	0.15	0.12	7.84	
449.00	0.490	9.200	448.98	3.42	3.15	-1.35	1672539.39	14347570.45	39°30'35.2461"N	80°53'9.9962"W	3.43	336.776	0.59	-0.41	41.36	WFT EM <12-1/4">(375')(434'-2612')
542.00	0.870	68.290	541.98	3.80	3.80	-0.63	1672540.11	14347571.10	39°30'35.2526"N	80°53'9.9870"W	3.85	350.571	0.80	0.41	63.54	
635.00	3.530	95.610	634.90	2.65	3.78	2.87	1672543.61	14347571.08	39°30'35.2524"N	80°53'9.9423"W	4.75	37.228	3.00	2.86	29.38	
726.00	5.940	96.420	725.58	-0.52	2.98	10.34	1672551.08	14347570.28	39°30'35.2444"N	80°53'9.8470"W	10.76	73.913	2.65	2.65	0.99	
781.00	7.660	95.620	780.20	-3.26	2.31	16.82	1672557.55	14347569.60	39°30'35.2376"N	80°53'9.7644"W	16.98	82.195	3.13	3.13	-1.45	
811.00	8.610	93.760	809.89	-4.95	1.95	21.05	1672561.78	14347569.26	39°30'35.2341"N	80°53'9.7105"W	21.14	84.674	3.29	3.17	-6.20	
842.00	9.730	92.830	840.50	-6.81	1.68	25.98	1672565.71	14347568.98	39°30'35.2313"N	80°53'9.6475"W	26.04	86.298	3.64	3.61	-3.00	
938.00	12.800	90.910	934.64	-13.41	1.11	44.72	1672585.44	14347568.41	39°30'35.2254"N	80°53'9.4084"W	44.74	88.576	3.22	3.20	-2.00	
1032.00	14.890	89.670	1025.90	-20.78	1.02	67.21	1672607.93	14347568.32	39°30'35.2242"N	80°53'9.1215"W	67.22	89.134	2.25	2.22	-1.32	
1127.00	17.590	87.810	1117.10	-28.78	1.63	93.77	1672634.47	14347568.93	39°30'35.2300"N	80°53'8.7827"W	93.78	89.001	2.89	2.84	-1.96	
1222.00	20.060	84.300	1207.02	-36.61	3.80	124.33	1672685.02	14347571.10	39°30'35.2510"N	80°53'8.3927"W	124.39	88.249	2.86	2.60	-3.69	
1317.00	20.490	79.850	1296.14	-42.85	8.35	156.91	1672697.59	14347575.65	39°30'35.2956"N	80°53'7.9770"W	157.13	86.954	1.68	0.45	-4.68	
1411.00	19.930	80.900	1384.35	-48.06	13.78	188.93	1672729.59	14347581.08	39°30'35.3489"N	80°53'7.5684"W	189.43	85.827	0.71	-0.60	1.12	
1505.00	20.170	87.640	1472.66	-55.39	16.99	220.94	1672751.59	14347584.28	39°30'35.3801"N	80°53'7.1599"W	221.59	85.604	2.47	0.26	7.17	
1600.00	20.730	91.180	1561.68	-65.80	17.31	254.12	1672794.76	14347584.61	39°30'35.3829"N	80°53'6.7366"W	254.71	86.102	1.43	0.59	3.73	
1695.00	20.780	88.650	1650.52	-76.64	17.36	287.77	1672828.40	14347584.66	39°30'35.3830"N	80°53'6.3072"W	288.30	86.547	0.95	0.05	-2.66	
1789.00	20.350	86.150	1738.53	-85.90	18.85	320.75	1672861.35	14347586.15	39°30'35.3973"N	80°53'5.8864"W	321.31	86.636	1.04	-0.46	-2.66	
1884.00	20.730	85.800	1827.48	-94.44	21.19	354.00	1672894.60	14347588.49	39°30'35.4200"N	80°53'5.4622"W	354.64	86.574	0.42	0.40	-0.37	
1979.00	20.110	85.820	1916.52	-102.84	23.62	387.06	1672927.64	14347590.91	39°30'35.4436"N	80°53'5.0404"W	387.78	86.508	0.85	-0.65	0.02	
2073.00	20.980	82.030	2004.54	-110.12	27.13	419.84	1672960.42	14347594.42	39°30'35.4778"N	80°53'4.6220"W	420.72	86.303	1.69	0.93	-4.03	
2168.00	21.870	80.340	2092.98	-116.16	32.46	454.13	1672994.69	14347599.74	39°30'35.5301"N	80°53'4.1845"W	455.29	85.912	1.14	0.94	-1.78	
2262.00	22.170	80.810	2180.12	-121.95	38.23	488.90	1673029.44	14347605.51	39°30'35.5867"N	80°53'3.7408"W	490.39	85.529	0.37	0.32	0.50	
2357.00	21.320	79.820	2268.36	-127.57	44.14	523.59	1673064.12	14347611.42	39°30'35.6447"N	80°53'3.2981"W	525.45	85.181	0.97	-0.89	-1.04	
2452.00	20.740	79.780	2357.03	-132.71	50.18	557.14	1673097.66	14347617.46	39°30'35.7039"N	80°53'2.8699"W	559.40	84.854	0.61	-0.61	-0.04	

RECEIVED
Office of Oil and Gas
SEP 22 2022
Department of
Commercial Protection

SW



Actual Wellpath Report

Maggie Unit 3H AWP Proj: 17142'
Page 3 of 11



REFERENCE WELLPATH IDENTIFICATION			
Operator	ANTERO RESOURCES CORPORATION	Well	Maggie Unit 3H
Field	Tyler	API	47-095-02639-0000
Facility	Gamehenge East Pad	Wellbore	Maggie Unit 3H AWB
Slot	Slot #07		

WELLPATH DATA (201 stations)																
MD (ft)	Inclination (°)	Azimuth (°)	TVD (ft)	Vert Sect (ft)	North (ft)	East (ft)	Grid East (US ft)	Grid North (US ft)	Latitude	Longitude	Closure Dist (ft)	Closure Dir (°)	DLS (°/100ft)	Build Rate (°/100ft)	Turn Rate (°/100ft)	Comments
2548.00	21.180	79.760	2444.81	-137.76	56.15	590.23	1673130.74	14347623.43	39°30'35.7625"N	80°53'2.4476"W	592.90	84.566	0.47	0.47	-0.02	
2627.00	20.090	78.740	2520.61	-141.80	61.47	618.28	1673158.77	14347628.74	39°30'35.8147"N	80°53'2.0897"W	621.33	84.322	1.42	-1.35	-1.26	
2753.00	18.270	75.050	2639.62	-146.02	70.79	658.59	1673199.06	14347638.06	39°30'35.9063"N	80°53'1.5753"W	662.38	83.865	1.73	-1.44	-2.93	WFT EM <8-3/4">(2612')(2738'-6370')
2816.00	18.230	74.400	2699.45	-147.25	75.99	677.62	1673218.09	14347643.26	39°30'35.9575"N	80°53'1.3324"W	681.87	83.602	0.33	-0.06	-1.03	
2911.00	20.340	78.420	2789.12	-150.20	83.30	708.11	1673248.57	14347650.56	39°30'36.0293"N	80°53'0.9432"W	712.99	83.291	2.62	2.22	4.23	
3005.00	22.480	92.380	2876.68	-158.79	85.83	742.10	1673282.54	14347653.10	39°30'36.0539"N	80°53'0.5096"W	747.05	83.402	5.86	2.28	14.85	
3100.00	22.610	92.530	2964.42	-172.04	84.27	778.49	1673318.92	14347651.54	39°30'36.0381"N	80°53'0.0453"W	783.04	83.822	0.15	0.14	0.16	
3195.00	22.040	90.660	3052.30	-184.66	83.26	814.56	1673354.97	14347650.53	39°30'36.0276"N	80°52'59.5651"W	818.80	84.164	0.96	-0.60	-1.97	
3290.00	21.280	89.080	3140.60	-195.93	83.33	849.62	1673390.02	14347650.60	39°30'36.0279"N	80°52'59.1378"W	853.69	84.398	1.01	-0.80	-1.66	
3385.00	22.470	87.280	3228.78	-208.29	84.47	884.99	1673425.38	14347651.74	39°30'36.0387"N	80°52'58.6665"W	889.01	84.548	1.44	1.25	-1.83	
3481.00	22.300	85.790	3317.52	-216.01	86.68	921.48	1673461.85	14347653.94	39°30'36.0600"N	80°52'58.2209"W	925.55	84.626	0.62	-0.18	-1.55	
3576.00	21.920	83.890	3405.54	-224.42	89.95	957.08	1673497.44	14347657.22	39°30'36.0919"N	80°52'57.7666"W	961.30	84.631	0.92	-0.40	-2.21	
3670.00	20.890	83.190	3493.05	-231.74	93.87	991.16	1673531.50	14347661.13	39°30'36.1301"N	80°52'57.3317"W	995.60	84.590	1.11	-1.10	-0.53	
3764.00	21.420	82.070	3580.72	-238.50	98.22	1024.80	1673565.13	14347665.48	39°30'36.1728"N	80°52'56.9024"W	1029.50	84.525	0.71	0.56	-1.19	
3859.00	20.320	79.890	3669.48	-244.31	103.51	1058.23	1673598.54	14347670.77	39°30'36.2246"N	80°52'56.4759"W	1063.28	84.413	1.42	-1.16	-2.29	
3954.00	20.760	82.360	3758.45	-250.10	108.65	1091.15	1673631.45	14347675.90	39°30'36.2749"N	80°52'56.0558"W	1096.55	84.314	1.02	0.46	2.60	
4049.00	22.330	82.600	3846.79	-256.97	113.21	1125.78	1673666.07	14347680.47	39°30'36.3196"N	80°52'55.6138"W	1131.46	84.257	1.72	1.72	0.25	
4143.00	21.950	81.220	3933.84	-263.61	118.20	1160.90	1673701.18	14347685.45	39°30'36.3685"N	80°52'55.1657"W	1166.90	84.186	0.73	-0.47	-1.47	
4238.00	22.790	81.430	4021.69	-270.01	123.65	1196.64	1673736.90	14347690.90	39°30'36.4219"N	80°52'54.7096"W	1203.01	84.100	0.89	0.88	0.22	
4333.00	22.510	80.900	4109.36	-276.39	128.27	1232.79	1673773.04	14347696.52	39°30'36.4769"N	80°52'54.2463"W	1238.55	84.014	0.36	-0.29	-0.56	
4427.00	21.950	85.410	4196.38	-283.78	133.52	1268.07	1673808.31	14347700.77	39°30'36.5185"N	80°52'53.7981"W	1275.09	83.989	1.91	-0.60	4.80	
4522.00	21.450	86.580	4284.65	-292.78	135.98	1303.11	1673843.33	14347703.23	39°30'36.5423"N	80°52'53.3510"W	1310.19	84.043	0.70	-0.53	1.23	
4617.00	20.650	84.810	4373.31	-301.37	139.53	1337.14	1673877.34	14347705.78	39°30'36.5671"N	80°52'52.9168"W	1344.29	84.085	1.08	-0.84	-1.86	
4711.00	19.460	82.550	4461.61	-308.39	142.06	1369.17	1673909.36	14347709.31	39°30'36.6016"N	80°52'52.5081"W	1376.52	84.076	1.51	-1.27	-2.40	
4806.00	19.360	82.140	4551.21	-314.53	146.27	1400.46	1673940.64	14347713.51	39°30'36.6427"N	80°52'52.1088"W	1408.08	84.037	0.18	-0.11	-0.43	
4901.00	20.080	83.730	4640.65	-321.09	150.20	1432.23	1673972.40	14347717.44	39°30'36.6812"N	80°52'51.7034"W	1440.08	84.013	0.90	0.71	1.67	
4996.00	19.810	82.030	4729.97	-327.68	154.21	1464.35	1674004.50	14347721.45	39°30'36.7204"N	80°52'51.2936"W	1472.44	83.988	0.65	-0.23	-1.79	
5090.00	20.610	83.480	4818.18	-334.23	158.29	1496.56	1674036.70	14347725.53	39°30'36.7603"N	80°52'50.8825"W	1504.91	83.962	1.00	0.85	1.54	
5185.00	22.020	84.040	4906.68	-341.79	162.04	1530.88	1674071.01	14347729.28	39°30'36.7969"N	80°52'50.4445"W	1539.44	83.958	1.50	1.48	0.59	
5280.00	21.180	82.270	4995.01	-349.08	166.20	1565.60	1674105.72	14347733.43	39°30'36.8376"N	80°52'50.0014"W	1574.40	83.940	1.12	-0.88	-1.86	



Actual Wellpath Report

Maggie Unit 3H AWP Proj: 17142'
Page 4 of 11



REFERENCE WELLPATH IDENTIFICATION			
Operator	ANTERO RESOURCES CORPORATION	Well	Maggie Unit 3H
Field	Tyler	API	47-095-02639-0000
Facility	Gamehenge East Pad	Wellbore	Maggie Unit 3H AWB
Slot	Slot #07		

WELLPATH DATA (201 stations) † = interpolated, ‡ = extrapolated station																
MD (ft)	Inclination (°)	Azimuth (°)	TVD (ft)	Vert Sect (ft)	North (ft)	East (ft)	Grid East (US ft)	Grid North (US ft)	Latitude	Longitude	Closure Dist (ft)	Closure Dir (°)	DLS (°/100ft)	Build Rate (°/100ft)	Turn Rate (°/100ft)	Comments
5374.00	21.810	85.750	5082.48	-356.77	169.78	1599.85	1674139.95	14347737.01	39°30'36.8725"N	80°52'49.5645"W	1608.83	83.942	1.51	0.67	-3.70	
5469.00	21.090	85.670	5170.90	-365.52	172.38	1634.49	1674174.57	14347739.61	39°30'36.8977"N	80°52'49.1225"W	1643.55	83.980	0.76	-0.76	-0.08	
5564.00	19.850	84.230	5259.90	-373.46	175.29	1667.58	1674207.65	14347742.52	39°30'36.9261"N	80°52'48.7002"W	1676.77	83.999	1.41	-1.31	-1.52	
5659.00	21.060	82.770	5348.90	-380.56	179.06	1700.56	1674240.62	14347746.29	39°30'36.9629"N	80°52'48.2793"W	1709.96	83.989	1.38	1.27	-1.54	
5754.00	22.560	85.540	5437.10	-388.54	182.62	1735.87	1674275.71	14347749.85	39°30'36.9977"N	80°52'47.8314"W	1745.25	83.994	1.91	1.58	2.92	
5848.00	22.320	85.340	5523.99	-397.41	185.48	1771.44	1674311.47	14347752.70	39°30'37.0254"N	80°52'47.3750"W	1781.12	84.023	0.27	-0.26	-0.21	
5943.00	21.790	81.770	5612.04	-405.10	189.47	1806.87	1674346.88	14347756.69	39°30'37.0643"N	80°52'46.9229"W	1816.77	84.014	1.52	-0.56	-3.76	
5974.00	21.390	79.900	5640.86	-407.02	191.28	1818.13	1674358.14	14347758.50	39°30'37.0821"N	80°52'46.7792"W	1828.16	83.994	2.57	-1.29	-6.03	
6069.00	18.890	69.000	5730.08	-409.09	199.83	1849.56	1674389.56	14347767.05	39°30'37.1663"N	80°52'46.3780"W	1860.32	83.833	4.74	-2.63	-11.47	
6100.00	17.360	58.000	5759.55	-407.86	204.09	1856.17	1674398.16	14347771.30	39°30'37.2082"N	80°52'46.2681"W	1869.34	83.732	12.07	-4.94	-35.48	
6132.00	16.940	47.280	5790.13	-404.88	209.78	1865.64	1674405.63	14347777.00	39°30'37.2643"N	80°52'46.1726"W	1877.40	83.584	9.95	-1.31	-33.50	
6164.00	16.630	39.610	5820.77	-400.61	216.47	1871.99	1674411.98	14347783.68	39°30'37.3304"N	80°52'46.0916"W	1884.46	83.404	6.98	-0.97	-23.97	
6195.00	16.830	35.340	5850.46	-395.66	223.55	1877.41	1674417.40	14347790.76	39°30'37.4003"N	80°52'46.0222"W	1890.67	83.210	4.02	0.65	-13.77	
6227.00	17.890	32.490	5881.01	-389.88	231.47	1882.73	1674422.72	14347798.68	39°30'37.4785"N	80°52'45.9542"W	1896.91	82.991	4.25	3.31	-8.91	
6258.00	19.220	30.660	5910.39	-383.60	239.88	1887.69	1674427.87	14347807.08	39°30'37.5616"N	80°52'45.8882"W	1903.07	82.759	4.88	4.29	-5.90	
6290.00	20.540	28.160	5940.49	-376.35	249.36	1893.23	1674433.21	14347816.56	39°30'37.6552"N	80°52'45.8200"W	1909.58	82.497	4.91	4.13	-7.81	
6321.00	22.320	24.970	5969.34	-368.40	259.49	1898.28	1674438.26	14347826.69	39°30'37.7552"N	80°52'45.7554"W	1915.93	82.216	6.86	5.74	-10.29	
6353.00	24.020	21.170	5998.76	-359.03	271.08	1903.20	1674443.17	14347838.27	39°30'37.8697"N	80°52'45.6924"W	1922.41	81.894	7.07	5.31	-11.87	
6385.00	25.280	17.450	6027.85	-348.54	283.67	1907.60	1674447.57	14347850.86	39°30'37.9941"N	80°52'45.6361"W	1928.57	81.542	6.24	3.94	-11.63	
6434.00	28.880	11.010	6071.52	-329.90	305.20	1912.98	1674452.96	14347872.38	39°30'38.2088"N	80°52'45.5670"W	1937.18	80.935	9.14	6.94	-13.14	BH AT Curve <8-1/2"> (6385')(6434-17117)
6476.00	29.850	9.030	6108.16	-311.92	325.42	1916.55	1674456.52	14347892.59	39°30'38.4066"N	80°52'45.5211"W	1943.98	80.363	3.62	2.79	-4.71	
6570.00	35.570	5.270	6187.23	-266.26	375.79	1922.74	1674462.71	14347942.94	39°30'38.9044"N	80°52'45.4413"W	1959.12	78.941	6.46	6.09	-4.00	
6665.00	42.540	0.070	6260.97	-210.58	435.51	1925.32	1674465.29	14348002.64	39°30'39.4945"N	80°52'45.4074"W	1973.96	77.254	8.10	7.34	-5.47	
6727.00†	47.849	357.298	6304.73	-168.72	479.39	1924.26	1674464.23	14348046.50	39°30'39.9282"N	80°52'45.4201"W	1983.08	76.011	8.83	8.24	-4.47	Middlesex: 6727' MD
6759.00	50.310	356.040	6325.73	-145.46	503.49	1922.86	1674462.83	14348070.59	38°30'40.1664"N	80°52'45.4376"W	1987.68	75.327	8.83	6.31	-3.83	
6854.00	57.180	351.280	6381.90	-70.73	579.53	1914.27	1674454.24	14348146.60	39°30'40.9181"N	80°52'45.5459"W	2000.07	73.157	8.28	7.23	-5.01	
6877.00†	59.396	349.751	6393.99	-51.43	598.83	1911.04	1674451.01	14348165.89	39°30'41.1088"N	80°52'45.5868"W	2002.66	72.602	11.17	9.64	-6.65	Burkett: 6877' MD
6900.00	61.630	348.290	6405.31	-31.60	618.48	1907.22	1674447.20	14348185.53	39°30'41.3031"N	80°52'45.6351"W	2005.00	72.033	11.17	9.71	-6.35	
6915.00†	62.901	347.919	6412.29	-18.42	631.47	1904.49	1674444.46	14348198.52	39°30'41.4315"N	80°52'45.6698"W	2006.45	71.656	8.75	8.47	-2.48	Tully: 6915' MD
6948.00	65.700	347.130	6428.60	11.13	660.50	1898.06	1674438.04	14348227.53	39°30'41.7185"N	80°52'45.7513"W	2009.70	70.813	8.75	8.48	-2.39	

RECEIVED
 Office of Oil and Gas
 SEP 22 2022
 Environmental Protection
 NY Department of

DM



Actual Wellpath Report

Maggie Unit 3H AWP Proj: 17142'

Page 5 of 11



REFERENCE WELLPATH IDENTIFICATION			
Operator	ANTERO RESOURCES CORPORATION	Well	Maggie Unit 3H
Field	Tyler	API	47-095-02639-0000
Facility	Gamehenge East Pad	Wellbore	Maggie Unit 3H AWB
Slot	Slot #07		

WELLPATH DATA (201 stations) † = interpolated, ‡ = extrapolated station																
MD (ft)	Inclination (°)	Azimuth (°)	TVD (ft)	Vert Sect (ft)	North (ft)	East (ft)	Grid East (US ft)	Grid North (US ft)	Latitude	Longitude	Closure Dist (ft)	Closure Dir (°)	DLS (°/100ft)	Build Rate (°/100ft)	Turn Rate (°/100ft)	Comments
6994.00	69.210	345.390	6444.24	53.43	701.76	1887.97	1674427.95	14348268.78	39°30'42.1264"N	80°52'45.8794"W	2014.17	69.610	8.39	7.63	-3.78	
7022.00†	71.443	344.582	6453.66	79.74	727.22	1881.13	1674421.12	14348294.23	39°30'42.3782"N	80°52'45.9661"W	2016.81	68.864	8.43	7.98	-2.89	Marcellus POE: 7022' MD
7043.00	73.120	343.990	6480.05	99.71	746.48	1875.72	1674415.70	14348313.48	39°30'42.5685"N	80°52'46.0349"W	2018.80	68.299	8.43	7.96	-2.82	
7138.00	80.760	343.500	6481.50	192.09	835.25	1849.83	1674388.82	14348402.22	39°30'43.4463"N	80°52'46.3638"W	2029.66	65.699	8.06	8.04	-0.52	
7232.00	89.260	341.650	6489.67	285.61	924.51	1821.80	1674361.81	14348491.44	39°30'44.3288"N	80°52'46.7198"W	2042.96	63.094	9.25	9.04	-1.97	
7326.00	90.340	340.530	6490.00	379.61	1013.43	1791.34	1674331.36	14348580.33	39°30'45.2081"N	80°52'47.1070"W	2058.14	60.501	1.66	1.15	-1.19	
7421.00	90.280	338.940	6489.49	474.57	1102.52	1758.36	1674298.39	14348669.38	39°30'46.0890"N	80°52'47.5262"W	2075.42	57.912	1.78	-0.06	-1.78	
7515.00	90.460	339.700	6488.88	568.52	1190.43	1725.09	1674265.13	14348757.25	39°30'46.9583"N	80°52'47.9493"W	2095.96	55.392	0.93	0.19	0.91	
7609.00	90.340	339.890	6488.22	662.49	1278.64	1692.62	1674232.68	14348845.43	39°30'47.8306"N	80°52'48.3620"W	2121.30	52.932	0.24	-0.13	0.20	
7704.00	90.400	340.180	6487.61	757.47	1367.93	1660.18	1674200.26	14348934.68	39°30'48.7134"N	80°52'48.7743"W	2151.15	50.513	0.31	0.06	0.31	
7799.00	90.370	338.920	6486.97	852.43	1456.94	1626.99	1674167.08	14349023.66	39°30'49.5936"N	80°52'49.1963"W	2183.98	48.156	1.33	-0.03	-1.33	
7892.00	90.340	337.560	6486.40	945.31	1543.31	1592.52	1674132.62	14349109.99	39°30'50.4477"N	80°52'49.6347"W	2217.64	45.899	1.46	-0.03	-1.46	
7987.00	90.280	337.200	6485.88	1040.10	1631.00	1555.98	1674096.10	14349197.65	39°30'51.3148"N	80°52'50.0994"W	2254.16	43.652	0.38	-0.06	-0.38	
8082.00	90.250	339.190	6485.44	1134.97	1719.20	1520.69	1674060.83	14349285.81	39°30'52.1870"N	80°52'50.5482"W	2295.25	41.494	2.09	-0.03	2.09	
8177.00	90.030	341.110	6485.21	1229.86	1808.55	1488.44	1674028.68	14349375.13	39°30'53.0705"N	80°52'50.9582"W	2342.29	39.454	2.03	-0.23	2.02	
8272.00	90.340	342.210	6484.90	1324.95	1898.72	1458.55	1673998.70	14349465.26	39°30'53.9621"N	80°52'51.3381"W	2394.27	37.530	1.20	0.33	1.16	
8367.00	90.180	342.540	6484.47	1419.93	1989.26	1429.78	1673969.95	14349555.77	39°30'54.8573"N	80°52'51.7036"W	2449.78	35.707	0.39	-0.17	0.35	
8462.00	90.250	342.970	6484.12	1514.89	2079.99	1401.62	1673941.80	14349646.46	39°30'55.7543"N	80°52'52.0614"W	2508.17	33.974	0.46	0.07	0.45	
8557.00	89.910	343.910	6483.98	1609.81	2171.06	1374.54	1673914.73	14349737.48	39°30'56.6547"N	80°52'52.4054"W	2569.60	32.339	1.05	-0.36	0.99	
8651.00	90.370	344.830	6483.75	1703.67	2281.65	1349.06	1673888.26	14349827.92	39°30'57.5492"N	80°52'52.7290"W	2633.34	30.817	0.91	0.49	0.77	
8746.00	90.370	340.790	6483.14	1798.61	2352.22	1320.83	1673861.04	14349918.57	39°30'58.4459"N	80°52'53.0877"W	2697.69	29.315	4.04	0.00	-4.04	
8841.00	89.850	340.430	6482.96	1893.61	2441.83	1289.29	1673829.51	14350008.15	39°30'59.3320"N	80°52'53.4886"W	2761.30	27.834	0.67	-0.59	-0.38	
8936.00	90.250	341.840	6482.67	1988.60	2531.72	1258.57	1673798.81	14350098.01	39°31'0.2208"N	80°52'53.8790"W	2827.30	26.433	1.54	0.42	1.48	
9030.00	90.400	341.570	6482.34	2082.60	2620.97	1229.07	1673769.32	14350187.22	39°31'1.1032"N	80°52'54.2540"W	2894.84	25.124	0.33	0.16	-0.29	
9125.00	90.310	340.360	6481.75	2177.69	2710.77	1198.08	1673738.34	14350278.98	39°31'1.9912"N	80°52'54.6479"W	2963.73	23.844	1.28	-0.09	-1.27	
9220.00	90.000	339.020	6481.50	2272.56	2799.86	1165.11	1673705.38	14350366.04	39°31'2.8721"N	80°52'55.0671"W	3032.61	22.594	1.45	-0.33	-1.41	
9314.00	90.460	338.330	6481.12	2366.47	2887.42	1130.93	1673671.21	14350453.57	39°31'3.7380"N	80°52'55.5018"W	3101.00	21.389	0.88	0.49	-0.73	
9408.00	89.410	337.740	6481.23	2460.33	2974.60	1095.77	1673638.07	14350540.71	39°31'4.6000"N	80°52'55.9490"W	3170.01	20.223	1.28	-1.12	-0.63	
9502.00	90.370	338.760	6481.41	2554.21	3061.91	1060.94	1673601.25	14350627.98	39°31'5.4633"N	80°52'56.3920"W	3240.50	19.111	1.49	1.02	1.09	
9597.00	89.910	340.780	6481.17	2649.18	3151.04	1028.09	1673568.42	14350717.08	39°31'6.3447"N	80°52'56.8097"W	3314.52	18.070	2.18	-0.48	2.13	



Actual Wellpath Report

Maggie Unit 3H AWP Proj: 17142'
Page 6 of 11



REFERENCE WELLPATH IDENTIFICATION				
Operator	ANTERO RESOURCES CORPORATION		Well	Maggie Unit 3H
Field	Tyler		API	47-095-02639-0000
Facility	Gamehenge East Pad		Wellbore	Maggie Unit 3H AWB
Slot	Slot #07			

WELLPATH DATA (201 stations)																
MD (ft)	Inclination (°)	Azimuth (°)	TVD (ft)	Vert Sect (ft)	North (ft)	East (ft)	Grid East (US ft)	Grid North (US ft)	Latitude	Longitude	Closure Dist (ft)	Closure Dir (°)	DLS (°/100ft)	Build Rate (°/100ft)	Turn Rate (°/100ft)	Comments
9892.00	90.030	345.080	6481.22	2744.11	3241.83	1000.21	1673540.55	14350807.83	39°31'7.2424"N	80°52'57.1639"W	3392.62	17.147	4.53	0.13	4.53	
9786.00	90.710	346.380	6480.62	2837.80	3332.93	977.04	1673517.39	14350898.89	39°31'8.1430"N	80°52'57.4580"W	3473.19	16.338	1.56	0.72	1.38	
9881.00	90.710	344.410	6479.44	2932.53	3424.85	953.09	1673493.45	14350990.77	39°31'9.0518"N	80°52'57.7621"W	3554.99	15.551	2.07	0.00	-2.07	
9976.00	90.710	339.950	6478.26	3027.48	3515.26	924.03	1673464.40	14351081.15	39°31'9.9458"N	80°52'58.1315"W	3634.68	14.728	4.69	0.00	-4.69	
10070.00	90.280	339.850	6477.45	3121.48	3603.53	891.72	1673432.11	14351169.38	39°31'10.8186"N	80°52'58.5422"W	3712.22	13.899	0.47	-0.46	-0.11	
10164.00	90.550	343.100	6476.77	3215.44	3692.65	861.86	1673402.26	14351258.47	39°31'11.6997"N	80°52'58.9218"W	3791.89	13.138	3.47	0.29	3.46	
10259.00	90.770	344.810	6475.67	3310.31	3783.94	835.61	1673376.01	14351348.72	39°31'12.6023"N	80°52'59.2553"W	3875.10	12.453	1.81	0.23	1.80	
10354.00	91.290	341.420	6473.97	3405.23	3874.81	808.02	1673348.44	14351440.56	39°31'13.5008"N	80°52'59.6058"W	3958.17	11.779	3.61	0.55	-3.57	
10448.00	90.650	336.740	6472.37	3499.13	3962.58	774.47	1673314.90	14351528.29	39°31'14.3687"N	80°53'0.0324"W	4037.55	11.059	5.02	-0.68	-4.98	
10543.00	90.550	338.110	6471.38	3593.92	4050.20	738.01	1673278.45	14351616.97	39°31'15.2360"N	80°53'0.4963"W	4116.88	10.327	1.45	-0.11	1.44	
10637.00	90.520	339.670	6470.50	3687.84	4137.98	704.15	1673244.61	14351703.62	39°31'16.1031"N	80°53'0.9268"W	4197.46	9.657	1.66	-0.03	1.66	
10731.00	90.620	338.460	6469.57	3781.77	4225.77	670.57	1673211.04	14351791.37	39°31'16.9712"N	80°53'1.3539"W	4278.64	9.017	1.29	0.11	-1.29	
10825.00	91.080	336.150	6468.17	3875.55	4312.47	634.31	1673174.79	14351878.04	39°31'17.8286"N	80°53'1.8152"W	4358.87	8.367	2.51	0.49	-2.46	
10919.00	90.030	333.490	6467.26	3968.96	4397.53	594.32	1673134.82	14351963.06	39°31'18.6697"N	80°53'2.3241"W	4437.51	7.697	3.04	-1.12	-2.83	
11014.00	89.910	337.760	6467.31	4063.50	4484.04	555.12	1673095.84	14352049.54	39°31'19.5252"N	80°53'2.8229"W	4518.27	7.057	4.50	-0.13	4.49	
11108.00	89.170	341.670	6466.06	4157.45	4572.19	522.64	1673063.07	14352137.66	39°31'20.3958"N	80°53'3.2372"W	4601.95	6.520	4.23	-0.79	4.16	
11202.00	88.920	347.270	6466.63	4251.24	4662.71	497.39	1673037.93	14352228.14	39°31'21.2918"N	80°53'3.5567"W	4689.16	6.089	5.96	-0.27	5.96	
11296.00	90.370	347.740	6470.22	4344.66	4754.48	477.05	1673017.60	14352319.87	39°31'22.1990"N	80°53'3.8147"W	4778.35	5.730	1.62	1.54	0.50	
11391.00	90.430	342.220	6469.55	4439.40	4846.19	452.44	1672993.00	14352411.55	39°31'23.1058"N	80°53'4.1273"W	4867.27	5.334	5.81	0.06	-5.81	
11486.00	89.910	339.870	6469.27	4534.40	4936.04	421.59	1672962.16	14352501.36	39°31'23.9941"N	80°53'4.5195"W	4954.01	4.882	2.53	-0.56	-2.47	
11580.00	89.320	344.980	6469.90	4628.34	5025.62	393.21	1672933.79	14352590.90	39°31'24.8798"N	80°53'4.8801"W	5040.97	4.474	5.47	-0.63	5.44	
11675.00	90.560	344.860	6470.01	4723.13	5117.34	368.50	1672909.09	14352682.59	39°31'25.7867"N	80°53'5.1940"W	5130.59	4.119	1.30	1.29	-0.13	
11770.00	90.830	341.000	6468.86	4818.06	5208.13	340.82	1672881.22	14352773.35	39°31'26.6844"N	80°53'5.5483"W	5219.26	3.742	4.07	0.29	-4.06	
11864.00	90.520	339.710	6467.76	4912.04	5296.65	309.02	1672849.63	14352861.83	39°31'27.5597"N	80°53'5.9501"W	5305.66	3.339	1.41	-0.33	-1.37	
11959.00	90.460	339.780	6466.94	5007.01	5385.78	276.13	1672816.76	14352950.92	39°31'28.4409"N	80°53'6.3684"W	5392.85	2.935	0.10	-0.06	0.07	
12055.00	90.490	338.690	6466.15	5102.95	5475.54	242.10	1672782.74	14353040.64	39°31'29.3285"N	80°53'6.8012"W	5480.88	2.532	1.14	0.03	-1.14	
12149.00	90.310	337.620	6465.49	5196.82	5562.78	207.12	1672747.78	14353127.85	39°31'30.1912"N	80°53'7.2461"W	5566.64	2.132	1.15	-0.19	-1.14	
12244.00	90.060	337.190	6465.19	5291.62	5650.49	170.62	1672711.29	14353215.52	39°31'31.0585"N	80°53'7.7105"W	5653.06	1.730	0.52	-0.26	-0.45	
12338.00	90.030	337.180	6465.11	5385.40	5737.13	134.17	1672674.86	14353302.14	39°31'31.9153"N	80°53'8.1742"W	5738.70	1.340	0.03	-0.03	-0.01	
12432.00	90.180	338.200	6464.94	5479.23	5824.10	98.49	1672639.19	14353389.06	39°31'32.7752"N	80°53'8.6282"W	5824.93	0.969	1.10	0.16	1.09	

Office of Oil and Gas
 RECEIVED
 SEP 29 2022
 Environmental Protection
 MW Department of

SM



Actual Wellpath Report

Maggie Unit 3H AWP Proj: 17142'
Page 7 of 11



REFERENCE WELLPATH IDENTIFICATION			
Operator	ANTERO RESOURCES CORPORATION	Well	Maggie Unit 3H
Field	Tyler	API	47-095-02639-0000
Facility	Gamehenge East Pad	Wellbore	Maggie Unit 3H AWB
Slot	Slot #07		

WELLPATH DATA (201 stations)																
MD (ft)	Inclination (°)	Azimuth (°)	TVD (ft)	Vert Sect (ft)	North (ft)	East (ft)	Grid East (US ft)	Grid North (US ft)	Latitude	Longitude	Closure Dist (ft)	Closure Dir (°)	DLS (ft/100ft)	Build Rate (ft/100ft)	Turn Rate (ft/100ft)	Comments
12527.00	90.490	343.420	6464.38	5574.19	5913.79	67.27	1672607.99	14353478.72	39°31'33.6620"N	80°53'9.0251"W	5914.17	0.652	5.50	0.33	5.49	
12620.00	90.650	345.270	6463.46	5667.04	6003.33	42.18	1672582.90	14353568.22	39°31'34.5473"N	80°53'9.3439"W	6003.48	0.403	2.00	0.17	1.99	
12714.00	90.520	345.400	6462.50	5760.78	6094.26	18.38	1672559.12	14353659.12	39°31'35.4463"N	80°53'9.6461"W	6094.29	0.173	0.20	-0.14	0.14	
12810.00	90.550	344.440	6461.60	5856.56	6186.95	-6.59	1672534.15	14353751.77	39°31'36.3827"N	80°53'9.9633"W	6186.95	359.939	1.00	0.03	-1.00	
12904.00	90.520	342.900	6460.72	5950.46	6277.15	-33.02	1672507.73	14353841.93	39°31'37.2545"N	80°53'10.2991"W	6277.24	359.699	1.64	-0.03	-1.64	
12999.00	90.430	341.770	6459.94	6045.44	6367.67	-61.85	1672478.92	14353932.41	39°31'38.1495"N	80°53'10.6655"W	6367.97	359.444	1.19	-0.09	-1.19	
13093.00	90.250	342.260	6459.38	6139.42	6457.07	-90.87	1672449.91	14354021.78	39°31'39.0335"N	80°53'11.0345"W	6457.71	359.194	0.56	-0.19	0.52	
13187.00	90.376	342.190	6458.87	6233.41	6546.58	-119.57	1672421.22	14354111.26	39°31'39.9185"N	80°53'11.3992"W	6547.67	358.954	0.15	0.13	-0.07	
13281.00	90.280	343.220	6458.34	6327.37	6635.33	-147.51	1672393.29	14354200.97	39°31'40.8058"N	80°53'11.7544"W	6637.97	358.727	1.10	-0.10	1.10	
13376.00	90.310	346.120	6457.85	6422.17	6727.84	-172.82	1672368.19	14354292.54	39°31'41.7115"N	80°53'12.0734"W	6730.15	358.530	3.05	0.03	3.05	
13470.00	90.310	346.860	6457.34	6515.76	6819.34	-194.58	1672346.24	14354383.90	39°31'42.6151"N	80°53'12.3522"W	6822.11	358.366	0.79	0.00	0.79	
13564.00	90.370	344.210	6456.78	6609.47	6910.35	-218.06	1672322.77	14354474.88	39°31'43.5149"N	80°53'12.6504"W	6913.79	358.193	2.82	0.06	-2.82	
13659.00	90.180	339.710	6456.33	6704.44	7000.65	-247.47	1672293.37	14354565.15	39°31'44.4078"N	80°53'13.0243"W	7005.02	357.975	4.74	-0.20	-4.74	
13754.00	90.180	336.870	6456.03	6799.31	7088.90	-282.61	1672258.24	14354653.36	39°31'45.2804"N	80°53'13.4713"W	7094.53	357.717	2.99	0.00	-2.99	
13849.00	90.460	337.180	6455.50	6894.07	7178.37	-319.69	1672221.18	14354740.79	39°31'46.1453"N	80°53'13.9431"W	7183.48	357.449	0.44	0.29	0.33	
13944.00	90.370	337.130	6454.81	6988.84	7263.91	-356.57	1672184.31	14354828.30	39°31'47.0110"N	80°53'14.4124"W	7272.66	357.190	0.11	-0.09	-0.05	
14039.00	90.280	337.400	6454.27	7083.62	7351.53	-393.29	1672147.61	14354915.88	39°31'47.8774"N	80°53'14.8796"W	7362.04	356.938	0.30	-0.09	0.28	
14134.00	90.220	343.240	6453.85	7178.57	7440.94	-425.26	1672115.65	14355005.26	39°31'48.7615"N	80°53'15.2863"W	7453.08	356.729	6.15	-0.06	6.15	
14228.00	90.370	349.610	6453.37	7272.12	7532.27	-447.32	1672083.60	14355096.55	39°31'49.6644"N	80°53'15.5682"W	7545.54	356.601	6.78	0.16	6.78	
14323.00	91.510	348.140	6451.91	7366.23	7625.46	-465.64	1672075.28	14355189.71	39°31'50.5857"N	80°53'15.7987"W	7639.67	356.506	1.96	1.20	-1.55	
14418.00	90.950	340.130	6449.77	7461.00	7716.75	-491.69	1672049.35	14355280.96	39°31'51.4882"N	80°53'16.1283"W	7732.39	356.355	8.45	-0.59	-8.43	
14513.00	90.340	339.230	6448.70	7555.95	7805.83	-524.57	1672016.38	14355370.00	39°31'52.3890"N	80°53'16.5479"W	7823.44	356.155	1.14	-0.64	-0.95	
14608.00	90.370	340.670	6448.11	7650.94	7895.07	-557.14	1671983.82	14355459.20	39°31'53.2614"N	80°53'16.9621"W	7914.70	355.963	1.52	0.03	1.52	
14702.00	90.580	337.320	6447.33	7744.86	7982.81	-590.83	1671950.15	14355546.91	39°31'54.1189"N	80°53'17.3907"W	8004.64	355.767	3.57	0.22	-3.56	
14796.00	90.310	336.960	6446.60	7838.63	8069.42	-627.35	1671913.64	14355633.49	39°31'54.9754"N	80°53'17.8552"W	8093.77	355.555	0.42	-0.29	-0.38	
14892.00	90.310	339.070	6446.08	7934.48	8158.43	-663.28	1671877.72	14355722.46	39°31'55.8556"N	80°53'18.3126"W	8185.35	355.352	2.20	0.00	2.20	
14986.00	90.400	338.180	6445.50	8028.39	8245.97	-697.54	1671843.48	14355809.96	39°31'56.7211"N	80°53'18.7484"W	8275.42	355.165	0.95	0.10	-0.95	
15081.00	90.370	337.670	6444.88	8123.23	8334.00	-733.24	1671807.79	14355897.96	39°31'57.5916"N	80°53'19.2027"W	8366.19	354.972	0.54	-0.03	-0.54	
15176.00	90.430	337.630	6444.20	8218.06	8421.86	-769.37	1671771.68	14355985.78	39°31'58.4604"N	80°53'19.6623"W	8456.93	354.780	0.08	0.06	-0.04	
15271.00	90.310	339.160	6443.58	8312.94	8510.18	-804.35	1671736.72	14356074.07	39°31'59.3338"N	80°53'20.1074"W	8548.11	354.601	1.62	-0.13	1.61	



Actual Wellpath Report

Maggie Unit 3H AWP Proj: 17142'
Page 8 of 11



REFERENCE WELLPATH IDENTIFICATION			
Operator	ANTERO RESOURCES CORPORATION	Well	Maggie Unit 3H
Field	Tyler	API	47-095-02639-0000
Facility	Gamehenge East Pad	Wellbore	Maggie Unit 3H AWB
Slot	Slot #07		

WELLPATH DATA (201 stations) † = interpolated, ‡ = extrapolated station																	
MD (ft)	Inclination (°)	Azimuth (°)	TVD (ft)	Vert Sect (ft)	North (ft)	East (ft)	Grid East (US ft)	Grid North (US ft)	Latitude	Longitude	Closure Dist (ft)	Closure Dir (°)	DLS (°/100ft)	Build Rate (°/100ft)	Turn Rate (°/100ft)	Comments	
15366.00	90.220	340.190	6443.15	8407.91	8599.26	-837.34	1671703.73	14356163.12	39°32'0.2146"N	80°53'20.5271"W	8639.94	354.438	1.09	-0.09	1.08		
15461.00	90.400	341.990	6442.63	8502.91	8689.13	-868.13	1671672.96	14356252.95	39°32'1.1032"N	80°53'20.9186"W	8732.39	354.295	1.90	0.19	1.89		
15556.00	90.180	341.850	6442.15	8597.90	8779.44	-897.61	1671643.49	14356343.22	39°32'1.9961"N	80°53'21.2935"W	8825.21	354.162	0.27	-0.23	-0.15		
15651.00	90.400	341.800	6441.67	8692.89	8869.70	-927.24	1671615.87	14356433.44	39°32'2.8885"N	80°53'21.6702"W	8918.04	354.032	0.24	0.23	-0.05		
15748.00	90.310	341.470	6441.08	8787.88	8959.86	-957.17	1671583.95	14356523.57	39°32'3.7799"N	80°53'22.0508"W	9010.84	353.902	0.58	-0.09	-0.35		
15841.00	90.250	343.440	6440.62	8882.85	9050.43	-985.81	1671555.32	14356614.11	39°32'4.6754"N	80°53'22.4149"W	9103.97	353.784	2.07	-0.06	2.07		
15936.00	90.370	346.530	6440.10	8977.62	9142.18	-1010.42	1671530.73	14356705.81	39°32'5.5825"N	80°53'22.7276"W	9197.85	353.693	3.26	0.13	3.25		
16030.00	90.490	345.790	6439.40	9071.26	9233.45	-1032.90	1671508.25	14356797.05	39°32'6.4848"N	80°53'23.0131"W	9291.04	353.617	0.80	0.13	-0.79		
16125.00	90.310	343.120	6438.73	9166.09	9324.96	-1058.36	1671482.80	14356888.52	39°32'7.3895"N	80°53'23.3366"W	9384.83	353.525	2.82	-0.19	-2.81		
16220.00	90.000	342.270	6438.48	9261.05	9415.66	-1086.62	1671454.56	14356979.18	39°32'8.2853"N	80°53'23.6958"W	9478.15	353.417	0.95	-0.33	-0.89		
16315.00	90.150	343.210	6438.35	9356.01	9506.38	-1114.81	1671426.38	14357069.87	39°32'9.1832"N	80°53'24.0542"W	9571.52	353.312	1.00	0.16	0.99		
16409.00	90.090	343.930	6438.16	9449.92	9596.54	-1141.39	1671399.80	14357159.99	39°32'10.0747"N	80°53'24.3921"W	9664.18	353.217	0.77	-0.06	0.77		
16504.00	90.090	341.500	6438.01	9544.88	9687.24	-1169.62	1671371.59	14357250.66	39°32'10.9714"N	80°53'24.7509"W	9757.60	353.116	2.56	0.00	-2.56		
16599.00	89.970	340.390	6437.96	9639.88	9777.04	-1200.63	1671340.59	14357340.42	39°32'11.8593"N	80°53'25.1454"W	9850.48	352.999	1.18	-0.13	-1.17		
16695.00	90.000	338.610	6437.98	9735.84	9866.95	-1234.25	1671306.98	14357430.30	39°32'12.7483"N	80°53'25.5731"W	9943.85	352.870	1.85	0.03	-1.85		
16789.00	90.090	339.010	6437.91	9829.76	9954.60	-1268.23	1671273.02	14357517.91	39°32'13.6150"N	80°53'26.0054"W	10035.06	352.740	0.44	0.10	0.43		
16884.00	90.060	339.690	6437.78	9924.71	10043.49	-1301.73	1671239.53	14357606.77	39°32'14.4939"N	80°53'26.4316"W	10127.50	352.615	0.72	-0.03	0.72		
16980.00	90.550	341.310	6437.27	10020.70	10133.98	-1333.77	1671207.50	14357697.22	39°32'15.3887"N	80°53'26.8392"W	10221.38	352.502	1.76	0.51	1.69		
17075.00	90.490	343.120	6436.41	10115.68	10224.43	-1362.79	1671178.50	14357787.64	39°32'16.2830"N	80°53'27.2052"W	10314.86	352.408	1.91	-0.06	1.91		
17117.00	90.520	342.920	6436.04	10157.66	10264.60	-1375.05	1671166.24	14357827.79	39°32'16.6801"N	80°53'27.3641"W	10366.29	352.370	0.48	0.07	-0.48		
17142.00	90.520	342.920	6435.81	10182.64	10288.50	-1382.40	1671158.90	14357851.67	39°32'16.9164"N	80°53'27.4574"W	10380.96	352.347	0.00	0.00	0.00	Projected MD at TD: 17142' MD	

RECEIVED
 Office of Oil and Gas
 SEP 22 2022
 WY Department of
 Environmental Protection

SM



Actual Wellpath Report

Maggie Unit 3H AWP Proj: 17142'

Page 9 of 11



REFERENCE WELLPATH IDENTIFICATION

Operator	ANTERO RESOURCES CORPORATION	Well	Maggie Unit 3H
Field	Tyler	API	47-095-02639-0000
Facility	Gamehenge East Pad	Wellbore	Maggie Unit 3H AWB
Slot	Slot #07		

HOLE & CASING SECTIONS - Ref Wellbore: Maggie Unit 3H AWB Ref Wellpath: Maggie Unit 3H AWP Proj: 17142'

String/Diameter	Start MD [ft]	End MD [ft]	Interval [ft]	Start TVD [ft]	End TVD [ft]	Start N/S [ft]	Start E/W [ft]	End N/S [ft]	End E/W [ft]
20in Conductor	30.00	110.00	80.00	30.00	110.00	0.00	0.00	0.19	-0.26
17.5in Open Hole	110.00	497.60	387.60	110.00	497.58	0.19	-0.26	3.52	-1.12
13.375in Casing Surface	30.00	497.60	467.60	30.00	497.58	0.00	0.00	3.52	-1.12
12.25in Open Hole	497.60	2671.00	2173.40	497.58	2562.02	3.52	-1.12	64.53	632.84
9.625in Casing Intermediate	30.00	2671.00	2641.00	30.00	2562.02	0.00	0.00	64.53	632.84
8.75in Open Hole	2671.00	6459.00	3788.00	2562.02	6093.38	64.53	632.84	317.13	1915.18
8.5in Open Hole	6459.00	17142.00	10683.00	6093.38	6435.81	317.13	1915.18	10288.50	-1382.40
5.5in Casing Production	30.00	17142.00	17112.00	30.00	6435.81	0.00	0.00	10288.50	-1382.40

TARGETS

Name	TVD [ft]	North [ft]	East [ft]	Grid East [US ft]	Grid North [US ft]	Latitude	Longitude	Shape
Maggie Unit 3H - POE - Rev-3	6462.00	728.44	1879.68	1674419.67	14348295.45	39°30'42.3902"N	80°52'45.9846"W	point
Maggie Unit 3H - BHL - Rev-3	6497.00	10258.95	-1378.03	1671163.27	14357822.14	39°32'16.6243"N	80°53'27.4021"W	point
Maggie Unit 3H - LP - Rev-3	6497.00	925.54	1812.31	1674352.32	14348492.47	39°30'44.3391"N	80°52'46.8409"W	point
Maggie Unit 3H - 50' L/R Hardline	6550.00	5493.70	250.83	1672791.47	14353058.79	39°31'29.5078"N	80°53'6.6895"W	rectangle

2D Rectangle 10075.8 x 100.



Actual Wellpath Report

Maggie Unit 3H AWP Proj: 17142'

Page 10 of 11



REFERENCE WELLPATH IDENTIFICATION			
Operator	ANTERO RESOURCES CORPORATION	Well	Maggie Unit 3H
Field	Tyler	API	47-095-02639-0000
Facility	Gamehenge East Pad	Wellbore	Maggie Unit 3H AWB
Slot	Slot #07		

WELLPATH COMPOSITION - Ref Wellbore: Maggie Unit 3H AWB Ref Wellpath: Maggie Unit 3H AWP Proj: 17142'					
Start MD (ft)	End MD (ft)	Positional Uncertainty Model	Log Name/Comment	Wellbore	Survey Date
30.00	390.00	Gyrodata 2015 - GC+WIR+DPIPE	01 Gyrodata MS Gyro <17-1/2">(100'-375')	Maggie Unit 3H AWB	1/3/2020
390.00	2627.00	OWSG MWD rev2 + HRGM	02 WFT EM <12-1/4">(375')(434'-2612')	Maggie Unit 3H AWB	1/3/2020
2627.00	6385.00	OWSG MWD rev2 + HRGM	03 WFT EM <8-3/4">(2612')(2738'-6370')	Maggie Unit 3H AWB	1/3/2020
6385.00	17142.00	BH AutoTrak Curve (2019) (Short spacing)	04 BH AT Curve <8-1/2">(6385')(6434'-17117')	Maggie Unit 3H AWB	2/20/2020

RECEIVED
 Office of Oil and Gas
 SEP 22 2022
 TN Department of
 Environmental Protection

DM



Actual Wellpath Report

Maggie Unit 3H AWP Proj: 17142'

Page 11 of 11



REFERENCE WELLPATH IDENTIFICATION

Operator	ANTERO RESOURCES CORPORATION	Well	Maggie Unit 3H
Field	Tyler	API	47-095-02639-0000
Facility	Gamehenge East Pad	Wellbore	Maggie Unit 3H AWB
Slot	Slot #07		

COMMENTS

Wellpath general comments

API: 47-095-02639-0000

BHI Job #: 110283371A

Rig: H&P 519

Duration: 02/22/2020-02/24/2020

Gyrodatta MS Gyro <17-1/2">(100'-375')

WFT EM <12-1/4">(375')(434'-2612')

WFT EM <8-3/4">(2612')(2738'-6370')

BH AT Curve <8-1/2">(6385')(6434'-17117')

Middlesex: 6727' MD

Burkett: 6877' MD

Tully: 6915' MD

Marcellus POE: 7022' MD

Projected MD at TD: 17142' MD