

# ANTERO RESOURCES CORPORATION

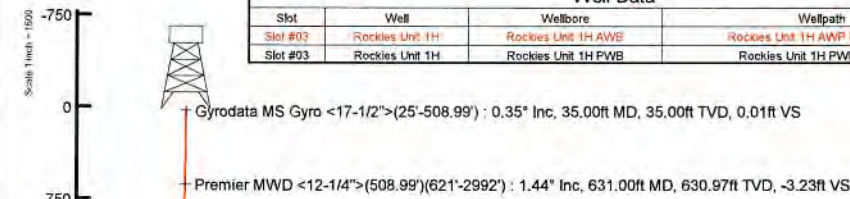
Location: Tyler County, WV  
 Field: Tyler  
 Facility: Colorado West Pad

Slot: Slot #03  
 Well: Rockies Unit 1H  
 Wellbore: Rockies Unit 1H PWB

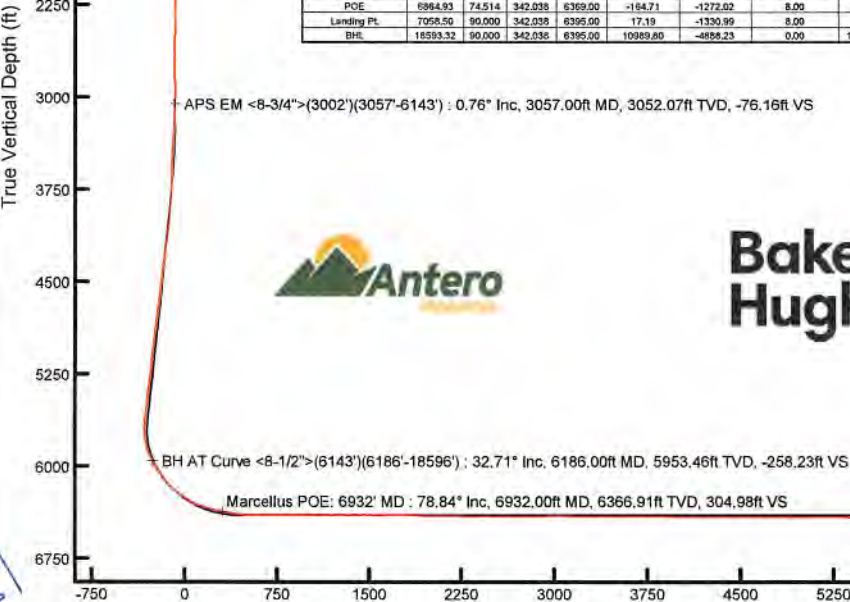
This reference wellpath is Rockies Unit 1H PWB Rev-A.0	Grid System: NAD83 / UTM Zone 17 North, US Feet
This vertical depths are referenced to Patterson 342 (RKB)	North Reference: Grid north
Reference wellpath measured depths are referenced to Patterson 342 (RKB)	Scale: True distance
Patterson 342 (RKB) to Mean Sea Level: 773.5 feet	Coordinates are in feet referenced to Slat
Mean Sea Level to Ground level (At Slot: Slot #03): -748.5 feet	Depths are in feet
Offset wellpath MDs are referenced to each path's default MD datum	Created by: dabbist on 2020/04/22; Database: WA_NRA_EasternUS_Data

Location Information					
Facility Name	Grid East (US ft)	Grid North (US ft)	Latitude	Longitude	
Colorado West Pad	1699843.950	14308473.940	39°24'8.1990"N	80°47'22.6560"W	
Slot	Local N (ft)	Local E (ft)	Grid East (US ft)	Grid North (US ft)	Latitude
Slot #03	16.20	-41.96	1699802.010	14308490.130	39°24'8.3600"N
Patterson 342 (RKB) to Ground level (At Slot: Slot #03)					25ft
Mean Sea Level to Ground level (At Slot: Slot #03)					-748.5ft
Patterson 342 (RKB) to Mean Sea Level					773.5ft

Well Data			
Slot	Well	Wellbore	Wellpath
Slot #03	Rockies Unit 1H	Rockies Unit 1H AWE	Rockies Unit 1H AWP Proj 18621
Slot #03	Rockies Unit 1H	Rockies Unit 1H PWB	Rockies Unit 1H PWB Rev-A.0



Well Profile Data							
Design Comment	MD (ft)	Inc (°)	Az (°)	TVD (ft)	Local N (ft)	Local E (ft)	DLS (°/100ft)
Tie On	3002.00	0.500	167.580	2997.07	-94.52	-48.06	2.85
Proj To Bottom	3068.00	0.500	167.580	3063.07	-95.08	-45.93	0.00
Drift Out Cog	3140.00	0.500	167.580	3135.08	-95.89	-45.80	0.00
Hole Target	3956.95	24.594	238.935	3926.84	-189.55	-193.29	3.00
Curve ROP	5948.83	74.894	238.935	5946.15	-299.93	-489.54	0.00
POE	6984.93	74.514	342.038	6369.00	-164.71	-172.02	8.00
Landing PL	7058.50	90.000	342.038	6395.00	17.19	-130.99	8.00
BH	18593.32	90.000	342.038	6395.00	10989.80	-488.23	0.00



Projected MD at TD: 18621' MD : 6401.84ft TVD, 10998.59ft N, 4870.96ft W

API: 47-095-02658-0000  
 BHI Job #: 110338969A  
 Rig: Patterson 342  
 Duration: 03/26/2020-03/31/2020



User specified (HDGM) Dip: 66.44° Field: 51876 nT  
 Magnetic North is 7.65 degrees West of True North (at 3/24/2020)  
 Grid North is 0.13 degrees East of True North  
 To correct azimuth from True to Grid subtract 0.13 degrees  
 To correct azimuth from Magnetic to Grid subtract 7.78 degrees

Marcellus POE: 6932' MD : 6366.91ft TVD, 95.23ft S, 1282.86ft W

BH AT Curve <8-1/2">(6143')(6186'-18596') : 5953.46ft TVD, 593.51ft S, 993.53ft W

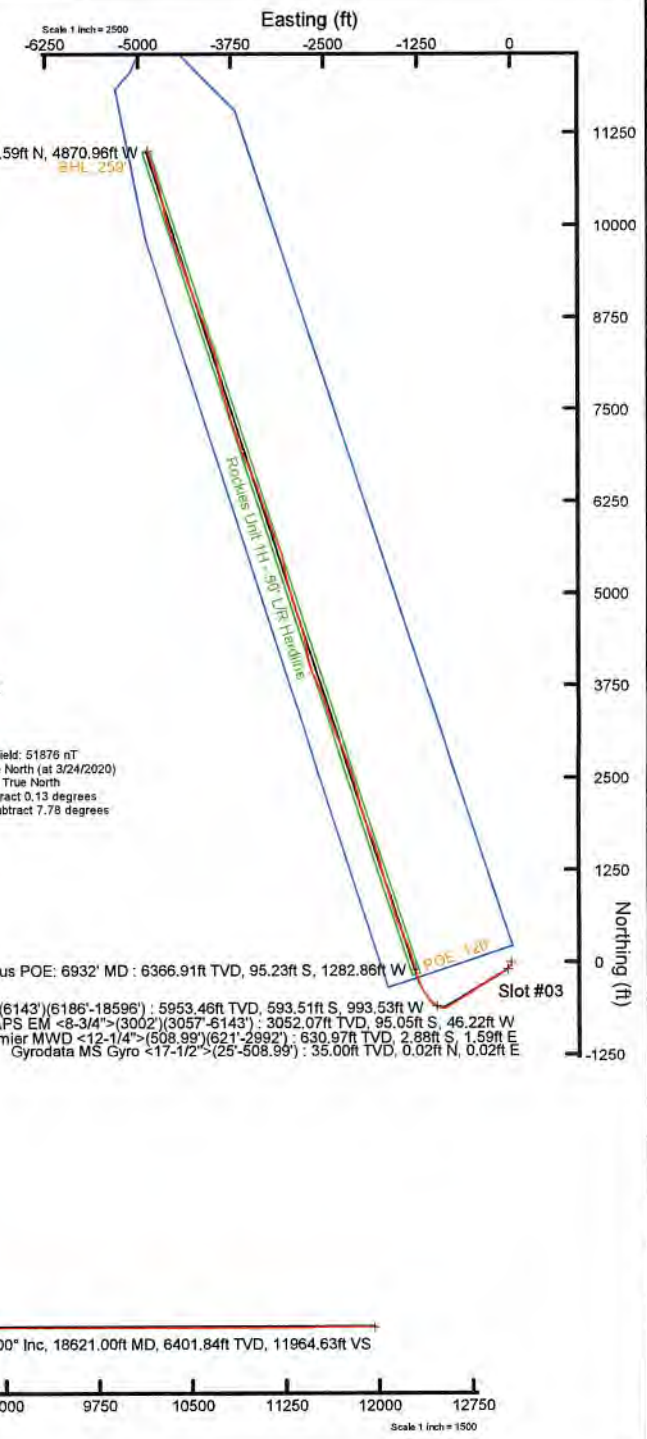
APS EM <8-3/4">(3002')(3057'-6143') : 3052.07ft TVD, 95.05ft S, 46.22ft W

Premier MWD <12-1/4">(508.99')(621'-2992') : 630.97ft TVD, 2.88ft S, 1.59ft E

Gyrodatta MS Gyro <17-1/2">(25'-508.99') : 35.00ft TVD, 0.02ft N, 0.02ft E

Projected MD at TD: 18621' MD : 90.00° Inc, 18621.00ft MD, 6401.84ft TVD, 11964.63ft VS

Vertical Section (ft)  
 Azimuth 342.04° with reference 0.00 N, 0.00 E





# Actual Wellpath Report

Rockies Unit 1H AWP Proj: 18621'  
Page 1 of 12



REFERENCE WELLPATH IDENTIFICATION			
Operator	ANTERO RESOURCES CORPORATION	Well	Rockies Unit 1H
Field	Tyler	API	47-095-02658-0000
Facility	Colorado West Pad	Wellbore	Rockies Unit 1H AWB
Slot	Slot #03		

REPORT SETUP INFORMATION			
Projection System	NAD27 / UTM Zone 17 North, US feet	Software System	WellArchitect® 6.0
North Reference	Grid	User	Delaset
Scale	0.999604	Report Generated	4/2/2020 at 7:31:30 PM
Convergence at slot	0.13° East	Database	WA_MPL_EasternUS_Defn

WELLPATH LOCATION						
	Local coordinates		Grid coordinates		Geographic coordinates	
	North[ft]	East[ft]	Easting[US ft]	Northing[US ft]	Latitude	Longitude
Slot Location	16.20	-41.96	1699802.01	14308490.13	39°24'8.3600"N	80°47'23.1900"W
Facility Reference Pt			1699843.95	14308473.94	39°24'8.1990"N	80°47'22.6560"W
Field Reference Pt			0.00	0.00	0°00'0.0000"	85°29'19.3013"W

WELLPATH DATUM			
Calculation method	Minimum curvature	Patterson 342 (RKB) to Facility Vertical Datum	773.50ft
Horizontal Reference Pt	Slot	Patterson 342 (RKB) to Mean Sea Level	773.50ft
Vertical Reference Pt	Patterson 342 (RKB)	Patterson 342 (RKB) to Ground Level at Slot (Slot #03)	25.00ft
MD Reference Pt	Patterson 342 (RKB)	Section Origin	N 0.00, E 0.00 ft
Field Vertical Reference	Mean Sea Level	Section Azimuth	342.04°



# Actual Wellpath Report

Rockies Unit 1H AWP Proj: 18621'  
Page 2 of 12



REFERENCE WELLPATH IDENTIFICATION			
Operator	ANTERO RESOURCES CORPORATION	Well	Rockies Unit 1H
Field	Tyler	API	47-095-02658-0000
Facility	Colorado West Pad	Wellbore	Rockies Unit 1H AWB
Slot	Slot #03		

WELLPATH DATA (227 stations) † = interpolated, ‡ = extrapolated station																
MD [ft]	Inclination [°]	Azimuth [°]	TVD [ft]	Vert Sect [ft]	North [ft]	East [ft]	Grid East [US ft]	Grid North [US ft]	Latitude	Longitude	Closure Dist [ft]	Closure Dir [°]	DLS [°/100ft]	Build Rate [°/100ft]	Turn Rate [°/100ft]	Comments
0.00	0.00	43.650	0.00	0.00	0.00	0.00	1699802.01	14308490.13	39°24'8.3600"N	80°47'23.1900"W	0.00	0.000	0.00	0.00	0.00	
25.00	0.000	43.650	25.00	0.00	0.00	0.00	1699802.01	14308490.13	39°24'8.3600"N	80°47'23.1900"W	0.00	0.000	0.00	0.00	0.00	
35.00	0.350	43.650	35.00	0.01	0.02	0.02	1699802.03	14308490.15	39°24'8.3603"N	80°47'23.1897"W	0.03	43.650	3.50	3.50	0.00	Gyrodata MS Gyro <17-1/2">(25'-508.99')
60.00	0.450	38.850	60.00	0.10	0.15	0.14	1699802.15	14308490.28	39°24'8.3616"N	80°47'23.1882"W	0.20	41.352	0.42	0.40	-19.20	
85.00	0.450	41.070	85.00	0.21	0.30	0.28	1699802.27	14308490.43	39°24'8.3630"N	80°47'23.1866"W	0.40	40.671	0.07	0.00	8.88	
110.00	0.350	57.010	110.00	0.28	0.42	0.39	1699802.40	14308490.55	39°24'8.3642"N	80°47'23.1850"W	0.57	42.888	0.59	-0.40	63.76	
135.00	0.350	76.250	135.00	0.29	0.48	0.53	1699802.54	14308490.61	39°24'8.3648"N	80°47'23.1832"W	0.71	47.762	0.47	0.00	76.96	
160.00	0.290	65.770	160.00	0.29	0.52	0.66	1699802.67	14308490.65	39°24'8.3652"N	80°47'23.1815"W	0.84	51.571	0.33	-0.24	-41.92	
185.00	0.260	51.770	185.00	0.32	0.58	0.76	1699802.77	14308490.71	39°24'8.3658"N	80°47'23.1802"W	0.96	52.509	0.29	-0.12	-56.00	
210.00	0.270	68.560	210.00	0.34	0.64	0.86	1699802.87	14308490.77	39°24'8.3664"N	80°47'23.1790"W	1.07	53.338	0.31	0.04	67.16	
235.00	0.290	67.320	235.00	0.35	0.69	0.97	1699802.98	14308490.82	39°24'8.3668"N	80°47'23.1775"W	1.19	54.816	0.08	0.08	-4.96	
260.00	0.290	103.720	260.00	0.33	0.70	1.09	1699803.10	14308490.83	39°24'8.3669"N	80°47'23.1760"W	1.30	57.527	0.72	0.00	145.60	
285.00	0.220	139.630	285.00	0.25	0.65	1.19	1699803.20	14308490.77	39°24'8.3664"N	80°47'23.1748"W	1.35	61.482	0.68	-0.28	143.64	
310.00	0.320	176.890	310.00	0.14	0.54	1.22	1699803.23	14308490.67	39°24'8.3653"N	80°47'23.1744"W	1.34	66.207	0.79	0.40	149.04	
335.00	0.270	161.470	335.00	0.01	0.41	1.24	1699803.25	14308490.54	39°24'8.3641"N	80°47'23.1741"W	1.31	71.631	0.37	-0.20	-51.88	
360.00	0.280	178.190	359.99	-0.11	0.30	1.27	1699803.27	14308490.43	39°24'8.3629"N	80°47'23.1738"W	1.30	76.816	0.32	0.04	66.88	
385.00	0.380	180.860	384.99	-0.25	0.15	1.27	1699803.28	14308490.28	39°24'8.3615"N	80°47'23.1738"W	1.28	83.133	0.40	0.40	10.68	
410.00	0.400	166.850	409.99	-0.41	-0.02	1.28	1699803.29	14308490.11	39°24'8.3599"N	80°47'23.1736"W	1.28	90.688	0.39	0.08	-56.04	
435.00	0.450	170.960	434.99	-0.59	-0.20	1.32	1699803.33	14308489.93	39°24'8.3581"N	80°47'23.1732"W	1.33	98.504	0.23	0.20	16.44	
460.00	0.500	158.660	459.99	-0.80	-0.40	1.38	1699803.38	14308489.73	39°24'8.3561"N	80°47'23.1725"W	1.43	106.062	0.45	0.20	-49.20	
485.00	0.530	164.990	484.99	-1.02	-0.61	1.44	1699803.45	14308489.52	39°24'8.3540"N	80°47'23.1716"W	1.57	112.864	0.26	0.12	25.32	
510.00	0.590	169.410	509.99	-1.27	-0.85	1.50	1699803.51	14308489.28	39°24'8.3516"N	80°47'23.1709"W	1.72	119.492	0.30	0.24	17.68	
518.99	0.580	163.350	518.98	-1.36	-0.94	1.52	1699803.53	14308489.19	39°24'8.3508"N	80°47'23.1706"W	1.79	121.641	0.70	-0.11	-67.41	
631.00	1.440	183.820	630.97	-3.23	-2.88	1.59	1699803.60	14308487.25	39°24'8.3315"N	80°47'23.1698"W	3.29	151.154	0.82	0.77	18.28	Premier MWD <12-1/4">(508.99')(621'-2992')
723.00	2.330	196.210	722.92	-5.85	-5.83	0.99	1699803.00	14308484.30	39°24'8.3024"N	80°47'23.1775"W	5.92	170.373	1.06	0.97	13.47	
815.00	3.730	198.660	814.79	-9.80	-10.46	-0.49	1699801.52	14308479.67	39°24'8.2566"N	80°47'23.1965"W	10.48	182.682	1.53	1.52	2.66	
908.00	4.180	199.740	907.57	-14.91	-16.52	-2.60	1699799.41	14308473.62	39°24'8.1968"N	80°47'23.2236"W	16.72	188.953	0.49	0.48	1.16	
1003.00	4.020	195.090	1002.33	-20.44	-22.99	-4.64	1699797.37	14308467.14	39°24'8.1329"N	80°47'23.2497"W	23.46	191.406	0.39	-0.17	-4.89	
1098.00	4.690	198.630	1097.05	-26.35	-29.89	-6.75	1699795.27	14308460.25	39°24'8.0648"N	80°47'23.2768"W	30.64	192.720	0.76	0.71	3.73	
1193.00	5.840	204.330	1191.65	-33.05	-37.97	-9.98	1699792.04	14308452.17	39°24'7.9850"N	80°47'23.3182"W	39.26	194.723	1.33	1.21	6.00	



# Actual Wellpath Report

Rockies Unit 1H AWP Proj: 18621'  
Page 3 of 12



REFERENCE WELLPATH IDENTIFICATION			
Operator	ANTERO RESOURCES CORPORATION	Well	Rockies Unit 1H
Field	Tyler	API	47-095-02658-0000
Facility	Colorado West Pad	Wellbore	Rockies Unit 1H AWB
Slot	Slot #03		

WELLPATH DATA (227 stations)																
MD [ft]	Inclination [°]	Azimuth [°]	TVD [ft]	Vert Sect [ft]	North [ft]	East [ft]	Grid East [US ft]	Grid North [US ft]	Latitude	Longitude	Closure Dist [ft]	Closure Dir [°]	DLS [°/100ft]	Build Rate [°/100ft]	Turn Rate [°/100ft]	Comments
1287.00	6.650	206.900	1285.09	-40.44	-47.19	-14.41	1699787.60	14308442.96	39°24'7.8940"N	80°47'23.3750"W	49.34	196.984	0.91	0.86	2.73	
1382.00	7.010	206.660	1379.42	-48.47	-57.27	-19.50	1699782.52	14308432.88	39°24'7.7944"N	80°47'23.4401"W	60.50	198.804	0.38	0.38	-0.25	
1476.00	6.690	207.350	1472.75	-56.40	-67.26	-24.59	1699777.43	14308422.89	39°24'7.6958"N	80°47'23.5052"W	71.62	200.082	0.35	-0.34	0.73	
1571.00	5.240	210.000	1567.23	-63.20	-75.93	-29.30	1699772.72	14308414.23	39°24'7.6102"N	80°47'23.5655"W	81.39	201.101	1.55	-1.53	2.79	
1666.00	4.200	213.650	1661.91	-68.26	-82.59	-33.40	1699768.62	14308407.58	39°24'7.5446"N	80°47'23.6179"W	89.09	202.019	1.14	-1.09	3.84	
1760.00	4.090	216.080	1755.86	-72.37	-88.16	-37.28	1699764.74	14308402.00	39°24'7.4896"N	80°47'23.6675"W	95.72	202.922	0.22	-0.12	2.59	
1855.00	4.130	218.330	1850.42	-76.26	-93.58	-41.40	1699760.63	14308396.58	39°24'7.4361"N	80°47'23.7201"W	102.33	203.863	0.17	0.04	2.37	
1950.00	1.490	230.300	1945.29	-78.62	-97.06	-44.47	1699757.56	14308393.11	39°24'7.4018"N	80°47'23.7593"W	106.76	204.617	2.83	-2.78	12.60	
2044.00	1.550	351.760	2039.28	-77.81	-96.58	-45.59	1699756.44	14308393.59	39°24'7.4066"N	80°47'23.7736"W	106.80	205.271	2.82	0.06	129.21	
2139.00	2.200	348.090	2134.23	-74.73	-93.52	-46.15	1699755.88	14308396.64	39°24'7.4368"N	80°47'23.7807"W	104.29	206.266	0.70	0.68	-3.86	
2234.00	1.340	348.660	2229.18	-71.82	-90.65	-46.75	1699755.28	14308399.52	39°24'7.4652"N	80°47'23.7882"W	101.99	207.280	0.91	-0.91	0.60	
2328.00	0.830	137.950	2323.17	-71.35	-90.08	-46.51	1699755.52	14308400.09	39°24'7.4708"N	80°47'23.7851"W	101.38	207.308	2.23	-0.54	158.82	
2423.00	2.030	142.170	2418.14	-73.56	-91.92	-45.02	1699757.01	14308398.25	39°24'7.4526"N	80°47'23.7661"W	102.35	206.092	1.27	1.26	4.44	
2518.00	1.090	168.710	2513.11	-76.04	-94.13	-43.81	1699758.22	14308396.03	39°24'7.4307"N	80°47'23.7508"W	103.83	204.956	1.22	-0.99	27.94	
2613.00	0.890	244.060	2608.10	-77.02	-95.27	-44.14	1699757.88	14308394.90	39°24'7.4195"N	80°47'23.7551"W	105.00	204.861	1.19	-0.42	79.32	
2708.00	1.210	272.420	2703.08	-76.75	-95.48	-45.66	1699756.37	14308394.69	39°24'7.4174"N	80°47'23.7745"W	105.83	205.559	0.72	0.55	29.85	
2803.00	0.320	312.460	2798.07	-76.17	-95.26	-46.86	1699755.17	14308394.91	39°24'7.4197"N	80°47'23.7897"W	106.16	206.193	1.04	-0.94	42.15	
2898.00	0.700	43.140	2893.07	-75.65	-94.65	-46.66	1699755.37	14308395.51	39°24'7.4256"N	80°47'23.7871"W	105.53	206.240	0.81	0.40	95.45	
2993.00	0.350	142.040	2988.07	-75.65	-94.46	-46.08	1699755.95	14308395.71	39°24'7.4275"N	80°47'23.7798"W	105.10	206.005	0.87	-0.37	104.11	
3002.00	0.500	167.580	2997.07	-75.71	-94.52	-46.06	1699755.97	14308395.65	39°24'7.4269"N	80°47'23.7795"W	105.14	205.979	2.65	1.67	283.78	
3057.00	0.760	216.820	3052.07	-76.16	-95.05	-46.22	1699755.80	14308395.12	39°24'7.4217"N	80°47'23.7816"W	105.69	205.935	1.05	0.47	89.53	APS EM <8-3/4">(3002')(3057'-6143')
3111.00	1.090	159.010	3106.06	-76.88	-95.81	-46.25	1699755.77	14308394.36	39°24'7.4142"N	80°47'23.7820"W	106.39	205.769	1.74	0.61	-107.06	
3207.00	5.310	222.550	3201.90	-79.98	-99.94	-48.93	1699753.10	14308390.23	39°24'7.3734"N	80°47'23.8163"W	111.28	206.088	5.13	4.40	66.19	
3302.00	8.560	229.100	3296.20	-84.90	-107.81	-57.25	1699744.78	14308382.36	39°24'7.2958"N	80°47'23.9225"W	122.07	207.970	3.52	3.42	6.89	
3397.00	11.590	237.420	3389.73	-90.07	-117.58	-70.64	1699731.40	14308372.60	39°24'7.1996"N	80°47'24.0933"W	137.17	210.997	3.53	3.19	8.76	
3491.00	11.550	239.710	3481.82	-94.46	-127.41	-86.72	1699715.32	14308362.77	39°24'7.1028"N	80°47'24.2985"W	154.12	214.242	0.49	-0.04	2.44	
3586.00	12.480	244.390	3574.74	-97.86	-136.64	-104.19	1699697.86	14308353.54	39°24'7.0119"N	80°47'24.5213"W	171.84	217.326	1.42	0.98	4.93	
3681.00	13.810	248.680	3667.25	-99.89	-145.20	-124.01	1699678.05	14308344.98	39°24'6.9278"N	80°47'24.7740"W	190.95	220.499	1.74	1.40	4.52	
3776.00	16.740	244.590	3758.89	-102.33	-155.20	-146.94	1699655.13	14308334.99	39°24'6.8295"N	80°47'25.0664"W	213.72	223.434	3.28	3.08	-4.31	
3870.00	19.500	237.970	3848.22	-107.90	-169.33	-172.47	1699629.60	14308320.86	39°24'6.6904"N	80°47'25.3921"W	241.71	225.527	3.66	2.94	-7.04	



# Actual Wellpath Report

Rockies Unit 1H AWP Proj: 18621'  
Page 4 of 12



REFERENCE WELLPATH IDENTIFICATION			
Operator	ANTERO RESOURCES CORPORATION	Well	Rockies Unit 1H
Field	Tyler	API	47-095-02658-0000
Facility	Colorado West Pad	Wellbore	Rockies Unit 1H AWB
Slot	Slot #03		

WELLPATH DATA (227 stations) † = interpolated, ‡ = extrapolated station																
MD (ft)	Inclination (°)	Azimuth (°)	TVD (ft)	Vert Sect (ft)	North (ft)	East (ft)	Grid East (US ft)	Grid North (US ft)	Latitude	Longitude	Closure Dist (ft)	Closure Dir (°)	DLS (ft/100ft)	Build Rate (ft/100ft)	Turn Rate (ft/100ft)	Comments
3964.00	22.140	237.620	3936.08	-116.13	-187.14	-200.74	1699601.35	14308303.06	39°24'6.5150"N	80°47'25.7527"W	274.44	227.007	2.81	2.81	-0.37	
4059.00	25.790	237.970	4022.87	-125.61	-207.70	-233.39	1699568.71	14308282.51	39°24'6.3126"N	80°47'26.1692"W	312.42	228.333	3.85	3.84	0.37	
4152.00	27.070	240.710	4106.16	-134.69	-228.78	-269.00	1699533.12	14308261.44	39°24'6.1051"N	80°47'26.6235"W	353.13	229.619	1.90	1.38	2.95	
4247.00	25.390	236.260	4191.38	-144.47	-250.67	-304.79	1699497.34	14308239.56	39°24'5.8895"N	80°47'27.0801"W	394.63	230.565	2.72	-1.77	-4.68	
4342.00	24.420	234.060	4277.54	-156.08	-273.51	-337.63	1699464.51	14308216.73	39°24'5.6645"N	80°47'27.4991"W	434.52	230.989	1.41	-1.02	-2.32	
4436.00	24.050	234.120	4363.26	-167.97	-296.14	-368.88	1699433.27	14308194.10	39°24'5.4416"N	80°47'27.8978"W	473.05	231.242	0.39	-0.39	0.06	
4532.00	25.290	238.620	4450.50	-178.75	-318.29	-402.24	1699399.93	14308171.97	39°24'5.2235"N	80°47'28.3235"W	512.94	231.646	2.34	1.29	4.69	
4626.00	24.860	236.330	4535.65	-188.76	-339.70	-435.83	1699366.35	14308150.57	39°24'5.0126"N	80°47'28.7520"W	552.58	232.066	1.13	-0.46	-2.44	
4721.00	24.140	236.880	4622.09	-199.24	-361.38	-468.72	1699333.48	14308128.89	39°24'4.7990"N	80°47'29.1716"W	591.86	232.368	0.80	-0.76	0.58	
4819.00	22.820	235.350	4711.98	-209.94	-383.14	-501.14	1699301.07	14308107.14	39°24'4.5848"N	80°47'29.5852"W	630.82	232.601	1.48	-1.35	-1.56	
4914.00	24.120	234.940	4799.12	-220.94	-404.77	-532.18	1699270.04	14308085.53	39°24'4.3717"N	80°47'29.9813"W	668.62	232.744	1.38	1.37	-0.43	
5009.00	25.960	236.420	4885.18	-232.25	-427.42	-565.40	1699236.84	14308062.88	39°24'4.1486"N	80°47'30.4051"W	708.77	232.912	2.05	1.94	1.56	
5103.00	25.920	238.050	4969.72	-242.76	-449.67	-599.97	1699202.28	14308040.64	39°24'3.9295"N	80°47'30.8461"W	749.78	233.149	0.76	-0.04	1.73	
5198.00	24.110	235.280	5055.80	-253.37	-471.71	-633.54	1699168.72	14308018.61	39°24'3.7124"N	80°47'31.2744"W	789.86	233.330	2.27	-1.91	-2.92	
5292.00	23.830	240.820	5141.71	-262.60	-491.91	-665.90	1699136.37	14307998.42	39°24'3.5135"N	80°47'31.6873"W	827.89	233.547	2.41	-0.30	5.89	
5387.00	25.590	240.740	5228.01	-270.36	-511.29	-700.56	1699101.73	14307979.04	39°24'3.3227"N	80°47'32.1293"W	867.30	233.877	1.85	1.85	-0.08	
5481.00	23.810	236.110	5313.41	-279.55	-531.80	-734.03	1699068.27	14307958.54	39°24'3.1208"N	80°47'32.5563"W	906.43	234.077	2.80	-1.89	-4.93	
5576.00	23.770	234.440	5400.34	-290.60	-553.63	-765.52	1699036.79	14307936.72	39°24'2.9058"N	80°47'32.9581"W	944.74	234.126	0.71	-0.04	-1.76	
5670.00	25.030	237.560	5485.94	-301.30	-575.31	-797.72	1699004.61	14307915.05	39°24'2.6922"N	80°47'33.3689"W	983.53	234.201	1.92	1.34	3.32	
5765.00	23.600	234.010	5572.52	-312.21	-597.27	-830.07	1698972.27	14307893.10	39°24'2.4759"N	80°47'33.7816"W	1022.62	234.263	2.15	-1.51	-3.74	
5859.00	21.360	245.080	5659.41	-320.11	-615.55	-860.84	1698941.52	14307874.82	39°24'2.2959"N	80°47'34.1741"W	1058.27	234.433	5.08	-2.38	11.78	
5953.00	22.560	262.130	5746.68	-319.03	-625.24	-894.26	1698908.11	14307865.14	39°24'2.2009"N	80°47'34.6001"W	1091.16	235.040	6.88	1.28	18.14	
6048.00	26.330	283.660	5833.32	-304.76	-622.76	-932.87	1698869.51	14307867.62	39°24'2.2263"N	80°47'35.0919"W	1121.64	236.274	10.12	3.97	22.66	
6143.00	30.750	299.700	5916.88	-275.70	-605.71	-974.52	1698827.87	14307884.66	39°24'2.3957"N	80°47'35.6220"W	1147.43	238.137	9.28	4.65	16.88	
6186.00	32.710	305.540	5953.46	-258.23	-593.51	-993.53	1698808.87	14307896.86	39°24'2.5168"N	80°47'35.8638"W	1157.31	239.147	8.47	4.56	13.58	BH AT Curve <8-1/2">(6143')(6186'-18596')
6280.00	36.200	310.860	6030.97	-214.04	-560.57	-1035.22	1698767.21	14307929.78	39°24'2.8433"N	80°47'36.3938"W	1177.25	241.564	4.90	3.71	5.66	
6375.00	41.680	314.720	6104.85	-161.93	-519.95	-1078.92	1698723.52	14307970.38	39°24'3.2457"N	80°47'36.9493"W	1197.67	244.270	6.31	5.77	4.06	
6447.00†	45.512	319.830	6157.00	-116.85	-483.46	-1112.52	1698689.94	14308006.86	39°24'3.6071"N	80°47'37.3763"W	1213.02	246.512	7.23	5.32	7.10	Middlesex: 6447' MD
6470.00	46.780	321.320	6172.93	-101.42	-470.65	-1123.05	1698679.41	14308019.67	39°24'3.7340"N	80°47'37.5100"W	1217.68	247.262	7.23	5.52	6.48	
6564.00	54.020	328.390	6232.86	-32.28	-411.40	-1164.47	1698638.00	14308078.90	39°24'4.3205"N	80°47'38.0360"W	1235.01	250.542	9.63	7.70	7.52	



# Actual Wellpath Report

Rockies Unit 1H AWP Proj: 18621'  
Page 5 of 12



REFERENCE WELLPATH IDENTIFICATION			
Operator	ANTERO RESOURCES CORPORATION	Well	Rockies Unit 1H
Field	Tyler	API	47-095-02658-0000
Facility	Colorado West Pad	Wellbore	Rockies Unit 1H AWB
Slot	Slot #03		

WELLPATH DATA (227 stations) † = interpolated, ‡ = extrapolated station																
MD [ft]	Inclination [°]	Azimuth [°]	TVD [ft]	Vert Sect [ft]	North [ft]	East [ft]	Grid East [US ft]	Grid North [US ft]	Latitude	Longitude	Closure Dist [ft]	Closure Dir [°]	DLS [°/100ft]	Build Rate [°/100ft]	Turn Rate [°/100ft]	Comments
6659.00	61.660	334.760	6283.42	46.72	-340.69	-1202.53	1698599.96	14308149.58	39°24'5.0202"N	80°47'38.5188"W	1249.86	254.182	9.84	8.04	6.71	
6680.00†	63.492	336.245	6293.10	65.23	-323.73	-1210.26	1698592.23	14308166.53	39°24'5.1881"N	80°47'38.6167"W	1252.81	255.025	10.75	8.72	7.07	Burkett: 6680' MD
6706.00	65.780	338.020	6304.23	88.64	-302.08	-1219.38	1698583.11	14308188.17	39°24'5.4022"N	80°47'38.7323"W	1256.24	256.086	10.75	8.80	6.83	
6750.00†	69.139	341.255	6321.10	129.23	-263.99	-1233.51	1698569.00	14308226.25	39°24'5.7790"N	80°47'38.9111"W	1261.44	257.920	10.22	7.63	7.35	Tully: 6750' MD
6753.00	69.370	341.470	6322.16	132.03	-261.33	-1234.40	1698568.10	14308228.90	39°24'5.8053"N	80°47'38.9225"W	1261.76	258.047	10.22	7.71	7.17	
6800.00	72.880	343.430	6337.37	176.50	-218.94	-1247.80	1698554.70	14308271.28	39°24'6.2246"N	80°47'39.0920"W	1266.86	260.048	8.45	7.47	4.17	
6848.00	76.840	344.280	6349.90	222.80	-174.44	-1260.68	1698541.83	14308315.76	39°24'6.6647"N	80°47'39.2547"W	1272.69	262.122	8.43	8.25	1.77	
6870.00†	77.809	344.412	6354.73	244.24	-153.77	-1266.47	1698536.04	14308336.42	39°24'6.8691"N	80°47'39.3279"W	1275.77	263.077	4.44	4.40	0.60	Hamilton: 6870' MD
6895.00	78.910	344.560	6359.77	268.71	-130.18	-1273.02	1698529.50	14308360.01	39°24'7.1024"N	80°47'39.4106"W	1279.66	264.161	4.44	4.40	0.59	
6932.00†	78.839	344.001	6366.91	304.98	-95.23	-1282.86	1698519.66	14308394.84	39°24'7.4481"N	80°47'39.5349"W	1286.39	265.755	1.49	-0.19	-1.51	Marcellus POE: 6932' MD
6942.00	78.820	343.850	6368.85	314.79	-85.80	-1285.57	1698516.95	14308404.36	39°24'7.5413"N	80°47'39.5692"W	1288.43	266.182	1.49	-0.19	-1.51	
6989.00	79.570	343.320	6377.66	360.94	-41.52	-1298.62	1698503.91	14308448.63	39°24'7.9793"N	80°47'39.7342"W	1299.28	268.169	1.94	1.60	-1.13	
7036.00	81.440	342.990	6385.41	407.28	2.85	-1312.05	1698490.48	14308492.98	39°24'8.4180"N	80°47'39.9040"W	1312.06	270.124	4.04	3.98	-0.70	
7131.00	88.490	342.790	6393.75	501.85	93.23	-1339.88	1698462.67	14308583.33	39°24'9.3120"N	80°47'40.2558"W	1343.12	273.980	7.42	7.42	-0.21	
7227.00	90.310	341.770	6394.75	597.84	184.67	-1369.09	1698433.46	14308674.73	39°24'10.2164"N	80°47'40.6254"W	1381.49	277.682	2.17	1.90	-1.06	
7321.00	90.250	337.750	6394.29	691.74	272.85	-1401.61	1698400.96	14308762.87	39°24'11.0886"N	80°47'41.0370"W	1427.92	281.016	4.28	-0.06	-4.28	
7416.00	89.850	335.700	6394.21	786.33	360.11	-1439.14	1698363.44	14308850.10	39°24'11.9519"N	80°47'41.5126"W	1483.51	284.048	2.20	-0.42	-2.16	
7511.00	90.150	337.580	6394.21	880.90	447.32	-1476.81	1698325.79	14308937.27	39°24'12.8147"N	80°47'41.9900"W	1543.07	286.851	2.00	0.32	1.98	
7605.00	89.450	338.530	6394.54	974.67	534.51	-1511.94	1698290.67	14309024.42	39°24'13.6772"N	80°47'42.4349"W	1603.64	289.470	1.26	-0.74	1.01	
7700.00	89.750	341.140	6395.20	1069.59	623.67	-1544.68	1698257.94	14309113.55	39°24'14.5592"N	80°47'42.8495"W	1665.84	291.987	2.77	0.32	2.79	
7795.00	89.850	343.480	6395.53	1164.58	714.17	-1573.55	1698229.09	14309204.02	39°24'15.4543"N	80°47'43.2146"W	1728.03	294.411	2.47	0.11	2.46	
7889.00	90.150	344.710	6395.53	1258.52	804.57	-1599.31	1698203.34	14309294.38	39°24'16.3484"N	80°47'43.5402"W	1790.29	296.706	1.35	0.32	1.31	
7983.00	90.030	343.960	6395.39	1352.44	895.08	-1624.69	1698177.97	14309384.86	39°24'17.2435"N	80°47'43.8609"W	1854.93	298.851	0.81	-0.13	-0.80	
8078.00	89.780	344.070	6395.54	1447.39	986.41	-1650.85	1698151.82	14309476.15	39°24'18.1467"N	80°47'44.1915"W	1923.10	300.859	0.29	-0.26	0.12	
8172.00	89.510	344.050	6396.13	1541.33	1076.79	-1676.67	1698126.01	14309566.49	39°24'19.0406"N	80°47'44.5178"W	1992.66	302.709	0.29	-0.29	-0.02	
8267.00	89.510	344.930	6396.94	1636.24	1168.33	-1702.07	1698100.62	14309657.99	39°24'19.9458"N	80°47'44.8388"W	2064.47	304.466	0.93	0.00	0.93	
8361.00	89.970	344.710	6397.36	1730.12	1259.05	-1726.68	1698076.02	14309748.68	39°24'20.8430"N	80°47'45.1497"W	2136.97	306.098	0.54	0.49	-0.23	
8456.00	90.340	345.640	6397.11	1824.98	1350.88	-1750.99	1698051.72	14309840.48	39°24'21.7512"N	80°47'45.4567"W	2211.53	307.650	1.05	0.39	0.98	
8551.00	88.710	343.240	6397.89	1919.88	1442.39	-1776.47	1698026.25	14309931.94	39°24'22.6562"N	80°47'45.7787"W	2288.30	309.075	3.05	-1.72	-2.53	
8645.00	89.570	341.940	6399.31	2013.86	1532.07	-1804.59	1697998.14	14310021.59	39°24'23.5432"N	80°47'46.1344"W	2367.23	310.331	1.66	0.91	-1.38	



# Actual Wellpath Report

Rockies Unit 1H AWP Proj: 18621'  
Page 6 of 12



REFERENCE WELLPATH IDENTIFICATION			
Operator	ANTERO RESOURCES CORPORATION	Well	Rockies Unit 1H
Field	Tyler	API	47-095-02658-0000
Facility	Colorado West Pad	Wellbore	Rockies Unit 1H AWB
Slot	Slot #03		

WELLPATH DATA (227 stations)																
MD [ft]	Inclination [°]	Azimuth [°]	TVD [ft]	Vert Sect [ft]	North [ft]	East [ft]	Grid East [US ft]	Grid North [US ft]	Latitude	Longitude	Closure Dist [ft]	Closure Dir [°]	DLS ["/100ft]	Build Rate ["/100ft]	Turn Rate ["/100ft]	Comments
8740.00	89.450	341.430	6400.12	2108.86	1622.25	-1834.44	1697968.30	14310111.74	39°24'24.4352"N	80°47'46.5121"W	2448.85	311.487	0.55	-0.13	-0.54	
8834.00	88.520	339.280	6401.78	2202.80	1710.76	-1866.04	1697936.72	14310200.21	39°24'25.3106"N	80°47'46.9120"W	2531.56	312.514	2.49	-0.99	-2.29	
8929.00	88.860	337.070	6403.96	2297.55	1798.92	-1901.34	1697901.42	14310288.34	39°24'26.1828"N	80°47'47.3593"W	2617.49	313.415	2.35	0.36	-2.33	
9024.00	90.310	337.830	6404.64	2392.24	1886.66	-1937.77	1697865.01	14310376.03	39°24'27.0507"N	80°47'47.8209"W	2704.52	314.234	1.72	1.53	0.80	
9118.00	89.480	342.270	6404.82	2486.16	1974.99	-1969.84	1697832.96	14310464.34	39°24'27.9245"N	80°47'48.2269"W	2789.42	315.075	4.81	-0.88	4.72	
9213.00	90.430	346.710	6404.89	2581.05	2066.51	-1995.23	1697807.57	14310555.82	39°24'28.8295"N	80°47'48.5478"W	2872.53	316.005	4.78	1.00	4.67	
9307.00	89.780	345.640	6404.72	2674.80	2157.78	-2017.70	1697785.12	14310647.05	39°24'29.7322"N	80°47'48.8313"W	2954.17	316.922	1.33	-0.69	-1.14	
9402.00	90.860	344.810	6404.19	2769.65	2249.64	-2041.92	1697760.90	14310738.87	39°24'30.6405"N	80°47'49.1373"W	3038.14	317.771	1.43	1.14	-0.87	
9496.00	90.520	345.750	6403.06	2863.49	2340.55	-2065.80	1697737.03	14310829.74	39°24'31.5396"N	80°47'49.4390"W	3121.81	318.568	1.06	-0.36	1.00	
9591.00	89.970	344.790	6402.65	2958.34	2432.42	-2089.96	1697712.88	14310921.58	39°24'32.4481"N	80°47'49.7441"W	3206.96	319.331	1.16	-0.58	-1.01	
9686.00	90.090	342.620	6402.60	3053.29	2523.60	-2116.61	1697686.24	14311012.72	39°24'33.3499"N	80°47'50.0811"W	3293.72	320.013	2.29	0.13	-2.28	
9780.00	89.720	340.130	6402.76	3147.28	2612.67	-2146.63	1697656.23	14311101.76	39°24'34.2309"N	80°47'50.4610"W	3381.43	320.593	2.68	-0.39	-2.65	
9874.00	90.120	339.440	6402.89	3241.21	2700.88	-2179.11	1697623.77	14311189.93	39°24'35.1034"N	80°47'50.8723"W	3470.34	321.103	0.85	0.43	-0.73	
9969.00	89.780	338.330	6402.97	3336.06	2789.50	-2213.33	1697589.56	14311278.52	39°24'35.9800"N	80°47'51.3057"W	3560.92	321.570	1.22	-0.36	-1.17	
10064.00	89.480	336.990	6403.58	3430.78	2877.36	-2249.44	1697553.46	14311366.35	39°24'36.8493"N	80°47'51.7652"W	3652.29	321.983	1.45	-0.32	-1.41	
10159.00	89.630	336.160	6404.32	3525.34	2964.53	-2287.21	1697515.71	14311453.48	39°24'37.7116"N	80°47'52.2419"W	3744.30	322.349	0.89	0.16	-0.87	
10253.00	89.660	336.310	6404.90	3618.86	3050.56	-2325.09	1697477.85	14311539.47	39°24'38.5627"N	80°47'52.7221"W	3835.61	322.686	0.16	0.03	0.16	
10348.00	89.780	337.610	6405.37	3713.48	3137.98	-2362.27	1697440.68	14311626.86	39°24'39.4275"N	80°47'53.1932"W	3927.75	323.028	1.37	0.13	1.37	
10443.00	89.510	338.650	6405.96	3808.26	3226.14	-2397.65	1697405.31	14311714.98	39°24'40.2997"N	80°47'53.6416"W	4019.54	323.380	1.13	-0.28	1.09	
10537.00	88.950	342.300	6407.22	3902.20	3314.71	-2429.06	1697373.91	14311803.52	39°24'41.1757"N	80°47'54.0392"W	4109.46	323.766	3.93	-0.60	3.88	
10632.00	90.180	342.070	6407.94	3997.19	3405.15	-2458.13	1697344.86	14311893.92	39°24'42.0702"N	80°47'54.4069"W	4199.69	324.175	1.32	1.29	-0.24	
10726.00	89.450	342.540	6408.25	4091.19	3494.70	-2486.70	1697316.30	14311983.44	39°24'42.9560"N	80°47'54.7684"W	4289.12	324.566	0.92	-0.78	0.50	
10821.00	88.740	341.210	6409.75	4186.18	3584.97	-2516.25	1697286.77	14312073.68	39°24'43.8488"N	80°47'55.1423"W	4379.90	324.935	1.59	-0.75	-1.40	
10916.00	90.220	338.790	6410.61	4281.10	3674.23	-2548.73	1697254.29	14312162.90	39°24'44.7317"N	80°47'55.5537"W	4471.69	325.262	2.99	1.56	-2.55	
11011.00	89.170	336.200	6411.11	4375.79	3761.99	-2585.09	1697217.95	14312250.82	39°24'45.5998"N	80°47'56.0144"W	4564.56	325.505	2.94	-1.11	-2.73	
11105.00	90.150	336.430	6411.67	4469.32	3848.07	-2622.85	1697180.20	14312336.66	39°24'46.4514"N	80°47'56.4931"W	4656.93	325.722	1.07	1.04	0.24	
11200.00	90.120	338.910	6411.45	4564.04	3935.93	-2658.94	1697144.13	14312424.50	39°24'47.3207"N	80°47'56.9504"W	4749.90	325.959	2.61	-0.03	2.61	
11295.00	90.220	342.740	6411.17	4659.00	4025.65	-2690.14	1697112.94	14312514.17	39°24'48.2080"N	80°47'57.3453"W	4841.76	326.247	4.03	0.11	4.03	
11389.00	90.150	349.630	6410.86	4752.69	4116.87	-2712.57	1697090.52	14312605.36	39°24'49.1102"N	80°47'57.6286"W	4930.18	326.619	7.33	-0.07	7.33	
11484.00	90.060	350.210	6410.69	4846.80	4210.40	-2729.20	1697073.90	14312698.86	39°24'50.0350"N	80°47'57.8378"W	5017.57	327.049	0.62	-0.09	0.61	



# Actual Wellpath Report

Rockies Unit 1H AWP Proj: 18621'  
Page 7 of 12



REFERENCE WELLPATH IDENTIFICATION			
Operator	ANTERO RESOURCES CORPORATION	Well	Rockies Unit 1H
Field	Tyler	API	47-095-02658-0000
Facility	Colorado West Pad	Wellbore	Rockies Unit 1H AWB
Slot	Slot #03		

WELLPATH DATA (227 stations)																
MD (ft)	Inclination (°)	Azimuth (°)	TVD (ft)	Vert Sect (ft)	North (ft)	East (ft)	Grid East (US ft)	Grid North (US ft)	Latitude	Longitude	Closure Dist (ft)	Closure Dir (°)	DLS (°/100ft)	Build Rate (°/100ft)	Turn Rate (°/100ft)	Comments
11578.00	90.180	350.230	6410.49	4939.84	4303.04	-2745.17	1697057.94	14312791.46	39°24'50.9508"N	80°47'58.0386"W	5104.12	327.464	0.13	0.13	0.02	
11673.00	90.310	348.060	6410.08	5034.10	4396.33	-2763.06	1697040.05	14312884.71	39°24'51.8733"N	80°47'58.2639"W	5192.52	327.851	2.29	0.14	-2.28	
11768.00	89.630	344.420	6410.13	5128.83	4488.59	-2785.65	1697017.47	14312976.93	39°24'52.7856"N	80°47'58.5491"W	5282.73	328.178	3.90	-0.72	-3.83	
11862.00	89.570	343.740	6410.79	5222.77	4578.98	-2811.43	1696991.70	14313067.29	39°24'53.6796"N	80°47'58.8751"W	5373.19	328.451	0.73	-0.06	-0.72	
11957.00	89.010	342.760	6411.97	5317.74	4669.94	-2838.81	1696964.33	14313158.21	39°24'54.5792"N	80°47'59.2213"W	5465.09	328.705	1.19	-0.59	-1.03	
12051.00	89.140	340.390	6413.49	5411.72	4759.11	-2868.51	1696934.64	14313247.34	39°24'55.4611"N	80°47'59.5972"W	5556.75	328.921	2.52	0.14	-2.52	
12146.00	90.250	341.470	6413.99	5506.70	4848.89	-2899.55	1696903.62	14313337.09	39°24'56.3491"N	80°47'59.9902"W	5649.70	329.121	1.63	1.17	1.14	
12240.00	89.570	342.990	6414.14	5600.69	4938.40	-2928.24	1696874.94	14313426.56	39°24'57.2345"N	80°48'0.3531"W	5741.29	329.334	1.77	-0.72	1.62	
12335.00	89.320	344.290	6415.06	5695.65	5029.55	-2954.99	1696848.19	14313517.68	39°24'58.1359"N	80°48'0.6915"W	5833.38	329.565	1.39	-0.26	1.37	
12430.00	90.120	344.420	6415.52	5790.57	5121.03	-2980.61	1696822.58	14313609.12	39°24'59.0406"N	80°48'1.0153"W	5925.28	329.799	0.85	0.84	0.14	
12524.00	90.400	345.320	6415.10	5884.45	5211.77	-3005.15	1696798.06	14313699.82	39°24'59.9379"N	80°48'1.3254"W	6016.10	330.032	1.00	0.30	0.96	
12619.00	89.720	350.830	6415.00	5978.89	5304.68	-3024.77	1696778.45	14313792.70	39°25'0.8567"N	80°48'1.5728"W	6106.46	330.308	5.84	-0.72	5.80	
12715.00	90.090	352.530	6415.16	6073.53	5399.66	-3038.66	1696764.56	14313887.65	39°25'1.7958"N	80°48'1.7471"W	6195.95	330.631	1.81	0.39	1.77	
12809.00	90.220	346.310	6414.90	6166.70	5492.02	-3055.91	1696747.32	14313979.97	39°25'2.7089"N	80°48'1.9643"W	6284.97	330.907	6.62	0.14	-6.62	
12904.00	90.280	340.360	6414.49	6261.64	5582.99	-3083.14	1696720.10	14314070.90	39°25'3.6086"N	80°48'2.3087"W	6377.74	331.091	6.26	0.06	-6.26	
12998.00	90.030	333.680	6414.23	6355.22	5669.48	-3119.82	1696683.43	14314157.35	39°25'4.4643"N	80°48'2.7736"W	6471.19	331.177	7.11	-0.27	-7.11	
13093.00	90.370	337.250	6413.90	6449.58	5755.89	-3159.26	1696644.01	14314243.73	39°25'5.3191"N	80°48'3.2737"W	6565.91	331.239	3.77	0.36	3.76	
13188.00	90.220	341.560	6413.41	6544.46	5844.79	-3192.67	1696610.61	14314332.60	39°25'6.1986"N	80°48'3.6969"W	6659.94	331.355	4.54	-0.16	4.54	
13283.00	90.520	343.480	6412.80	6639.45	5935.40	-3221.20	1696582.09	14314423.17	39°25'7.0947"N	80°48'4.0579"W	6753.16	331.511	2.05	0.32	2.02	
13378.00	90.250	339.590	6412.16	6734.42	6025.49	-3251.28	1696552.02	14314513.22	39°25'7.9857"N	80°48'4.4387"W	6846.71	331.649	4.10	-0.28	-4.09	
13472.00	90.310	338.590	6411.70	6828.30	6113.30	-3284.83	1696518.48	14314600.99	39°25'8.8543"N	80°48'4.8637"W	6939.92	331.750	1.07	0.06	-1.06	
13566.00	90.430	339.840	6411.09	6922.18	6201.18	-3318.19	1696485.14	14314688.84	39°25'9.7236"N	80°48'5.2863"W	7033.13	331.849	1.34	0.13	1.33	
13661.00	90.250	342.840	6410.53	7017.16	6291.17	-3348.58	1696454.76	14314778.80	39°25'10.6137"N	80°48'5.6710"W	7126.84	331.975	3.16	-0.19	3.16	
13755.00	90.280	344.390	6410.09	7111.12	6381.35	-3375.10	1696428.26	14314868.94	39°25'11.5056"N	80°48'6.0063"W	7218.93	332.126	1.65	0.03	1.65	
13850.00	90.340	338.990	6409.58	7206.08	6471.51	-3404.93	1696398.44	14314959.06	39°25'12.3973"N	80°48'6.3840"W	7312.59	332.249	5.68	0.06	-5.68	
13945.00	89.940	336.380	6409.35	7300.80	6559.38	-3441.00	1696362.38	14315046.90	39°25'13.2666"N	80°48'6.8411"W	7407.16	332.319	2.78	-0.42	-2.75	
14040.00	90.120	336.160	6409.30	7395.32	6646.35	-3479.23	1696324.17	14315133.84	39°25'14.1270"N	80°48'7.3258"W	7501.93	332.369	0.30	0.19	-0.23	
14135.00	89.910	335.360	6409.27	7489.75	6732.97	-3518.23	1696285.18	14315220.42	39°25'14.9839"N	80°48'7.8204"W	7596.77	332.411	0.87	-0.22	-0.84	
14229.00	90.220	332.350	6409.17	7582.78	6817.35	-3559.65	1696243.78	14315304.76	39°25'15.8187"N	80°48'8.3457"W	7690.73	332.429	3.22	0.33	-3.20	
14323.00	90.340	338.420	6408.71	7676.10	6902.76	-3598.78	1696204.66	14315390.15	39°25'16.6638"N	80°48'8.8420"W	7784.56	332.465	6.48	0.13	6.46	





# Actual Wellpath Report

Rockies Unit 1H AWP Proj: 18621'  
Page 8 of 12



REFERENCE WELLPATH IDENTIFICATION			
Operator	ANTERO RESOURCES CORPORATION	Well	Rockies Unit 1H
Field	Tyler	API	47-095-02658-0000
Facility	Colorado West Pad	Wellbore	Rockies Unit 1H AWB
Slot	Slot #03		

WELLPATH DATA (227 stations)																
MD (ft)	Inclination (°)	Azimuth (°)	TVD (ft)	Vert Sect (ft)	North (ft)	East (ft)	Grid East (US ft)	Grid North (US ft)	Latitude	Longitude	Closure Dist (ft)	Closure Dir (°)	DLS (°/100ft)	Build Rate (°/100ft)	Turn Rate (°/100ft)	Comments
14419.00	90.250	342.520	6408.21	7772.04	6993.22	-3630.87	1696172.59	14315480.57	39°25'17.5585"N	80°48'9.2483"W	7879.61	332.562	4.27	-0.09	4.27	
14513.00	90.120	342.640	6407.91	7866.04	7082.91	-3659.01	1696144.46	14315570.22	39°25'18.4455"N	80°48'9.6044"W	7972.20	332.679	0.19	-0.14	0.13	
14607.00	90.180	341.050	6407.66	7960.03	7172.22	-3688.29	1696115.18	14315659.50	39°25'19.3289"N	80°48'9.9751"W	8065.01	332.786	1.69	0.06	-1.69	
14702.00	90.000	339.560	6407.51	8054.99	7261.66	-3720.31	1696083.18	14315748.90	39°25'20.2136"N	80°48'10.3806"W	8159.20	332.873	1.58	-0.19	-1.57	
14796.00	89.970	342.240	6407.54	8148.96	7350.48	-3751.07	1696052.44	14315837.69	39°25'21.0921"N	80°48'10.7700"W	8252.28	332.964	2.85	-0.03	2.85	
14891.00	90.250	345.620	6407.36	8243.89	7441.76	-3777.36	1696026.15	14315928.92	39°25'21.9948"N	80°48'11.1025"W	8345.55	333.088	3.57	0.29	3.56	
14986.00	90.000	343.250	6407.15	8338.80	7533.27	-3802.85	1696000.67	14316020.40	39°25'22.8998"N	80°48'11.4248"W	8438.70	333.215	2.51	-0.26	-2.49	
15080.00	90.180	342.160	6407.00	8432.80	7623.01	-3830.79	1695972.74	14316110.11	39°25'23.7874"N	80°48'11.7784"W	8531.43	333.319	1.18	0.19	-1.16	
15176.00	89.780	344.490	6407.03	8528.77	7714.97	-3858.34	1695945.21	14316202.03	39°25'24.6968"N	80°48'12.1268"W	8625.98	333.430	2.46	-0.42	2.43	
15270.00	90.340	348.890	6406.94	8622.43	7806.42	-3879.97	1695923.58	14316293.45	39°25'25.6012"N	80°48'12.4000"W	8717.48	333.572	4.72	0.60	4.68	
15364.00	90.180	352.160	6406.51	8715.39	7899.13	-3895.44	1695908.12	14316386.11	39°25'26.5177"N	80°48'12.5946"W	8807.42	333.750	3.48	-0.17	3.48	
15459.00	90.030	351.490	6406.33	8809.01	7993.16	-3908.95	1695894.61	14316480.11	39°25'27.4474"N	80°48'12.7641"W	8897.78	333.940	0.72	-0.16	-0.71	
15554.00	90.430	348.610	6405.95	8903.07	8086.72	-3925.37	1695878.21	14316573.63	39°25'28.3725"N	80°48'12.9707"W	8989.08	334.108	3.06	0.42	-3.03	
15648.00	90.400	345.730	6405.27	8996.68	8178.36	-3946.24	1695857.34	14316665.24	39°25'29.2786"N	80°48'13.2341"W	9080.66	334.242	3.06	-0.03	-3.06	
15743.00	90.310	342.990	6404.68	9091.59	8269.83	-3971.85	1695831.74	14316756.67	39°25'30.1832"N	80°48'13.5579"W	9174.19	334.346	2.89	-0.09	-2.88	
15838.00	90.400	340.950	6404.09	9186.58	8360.16	-4001.25	1695802.35	14316846.97	39°25'31.0766"N	80°48'13.9300"W	9268.35	334.424	2.15	0.09	-2.15	
15932.00	90.000	340.000	6403.77	9280.55	8448.76	-4032.66	1695770.95	14316935.52	39°25'31.9529"N	80°48'14.3279"W	9361.83	334.484	1.10	-0.43	-1.01	
16026.00	90.030	340.180	6403.74	9374.49	8537.14	-4064.67	1695738.95	14317023.87	39°25'32.8271"N	80°48'14.7334"W	9455.38	334.540	0.19	0.03	0.19	
16121.00	89.660	339.570	6404.00	9469.42	8626.34	-4097.36	1695706.28	14317113.03	39°25'33.7094"N	80°48'15.1474"W	9549.98	334.593	0.75	-0.39	-0.64	
16215.00	89.570	339.100	6404.63	9563.32	8714.29	-4130.53	1695673.12	14317200.95	39°25'34.5794"N	80°48'15.5677"W	9643.65	334.639	0.51	-0.10	-0.50	
16310.00	89.940	339.160	6405.04	9658.19	8803.05	-4164.38	1695639.29	14317289.68	39°25'35.4574"N	80°48'15.9966"W	9738.36	334.683	0.39	0.39	0.06	
16405.00	90.120	340.010	6404.99	9753.11	8892.08	-4197.51	1695606.17	14317378.67	39°25'36.3381"N	80°48'16.4164"W	9833.02	334.730	0.91	0.19	0.89	
16499.00	89.630	339.630	6405.19	9847.03	8980.31	-4229.94	1695573.75	14317466.87	39°25'37.2108"N	80°48'16.8272"W	9926.65	334.778	0.66	-0.52	-0.40	
16594.00	89.780	339.610	6405.68	9941.95	9069.36	-4263.02	1695540.68	14317555.89	39°25'38.0916"N	80°48'17.2463"W	10021.31	334.824	0.16	0.16	-0.02	
16689.00	89.570	339.210	6406.22	10036.85	9158.29	-4296.43	1695507.29	14317644.78	39°25'38.9713"N	80°48'17.6696"W	10116.01	334.867	0.48	-0.22	-0.42	
16783.00	89.940	338.890	6406.62	10130.72	9246.08	-4330.04	1695473.69	14317732.53	39°25'39.8396"N	80°48'18.0955"W	10209.76	334.906	0.52	0.39	-0.34	
16878.00	90.000	341.730	6406.67	10225.66	9335.52	-4362.05	1695441.70	14317821.93	39°25'40.7242"N	80°48'18.5009"W	10304.33	334.956	2.99	0.06	2.99	
16973.00	90.000	342.050	6406.67	10320.66	9425.81	-4391.58	1695412.18	14317912.19	39°25'41.6173"N	80°48'18.8747"W	10398.65	335.019	0.34	0.00	0.34	
17067.00	90.030	338.860	6406.65	10414.62	9514.38	-4423.02	1695380.75	14318000.73	39°25'42.4934"N	80°48'19.2730"W	10492.21	335.067	3.39	0.03	-3.39	
17162.00	89.910	336.400	6406.70	10509.33	9602.23	-4459.17	1695344.61	14318088.53	39°25'43.3623"N	80°48'19.7313"W	10587.11	335.090	2.59	-0.13	-2.59	



# Actual Wellpath Report

Rockies Unit 1H AWP Proj: 18621'  
Page 9 of 12



REFERENCE WELLPATH IDENTIFICATION			
Operator	ANTERO RESOURCES CORPORATION	Well	Rockies Unit 1H
Field	Tyler	API	47-095-02658-0000
Facility	Colorado West Pad	Wellbore	Rockies Unit 1H AWB
Slot	Slot #03		

WELLPATH DATA (227 stations) † = interpolated, ‡ = extrapolated station																
MD [ft]	Inclination [°]	Azimuth [°]	TVD [ft]	Vert Sect [ft]	North [ft]	East [ft]	Grid East [US ft]	Grid North [US ft]	Latitude	Longitude	Closure Dist [ft]	Closure Dir [°]	DLS [°/100ft]	Build Rate [°/100ft]	Turn Rate [°/100ft]	Comments
17257.00	90.250	338.670	6406.56	10804.03	9690.01	-4495.47	1695308.33	14318176.28	39°25'44.2307"N	80°48'20.1915"W	10682.02	335.112	2.42	0.36	2.39	
17351.00	90.250	341.360	6406.15	10697.96	9778.34	-4527.60	1695276.22	14318264.58	39°25'45.1044"N	80°48'20.5984"W	10775.67	335.155	2.86	0.00	2.86	
17445.00	90.250	343.570	6405.74	10791.95	9867.97	-4555.91	1695247.91	14318354.17	39°25'45.9908"N	80°48'20.9568"W	10868.91	335.218	2.35	0.00	2.35	
17539.00	90.090	343.620	6405.47	10885.92	9958.14	-4582.46	1695221.37	14318444.31	39°25'46.8826"N	80°48'21.2927"W	10961.91	335.289	0.18	-0.17	0.05	
17634.00	90.310	344.810	6405.13	10980.84	10049.55	-4608.30	1695195.54	14318535.69	39°25'47.7867"N	80°48'21.6195"W	11055.77	335.366	1.27	0.23	1.25	
17729.00	90.430	347.880	6404.52	11075.56	10141.86	-4630.73	1695173.12	14318627.95	39°25'48.6994"N	80°48'21.9028"W	11149.03	335.459	3.23	0.13	3.23	
17824.00	90.150	348.700	6404.04	11170.00	10234.88	-4650.01	1695153.85	14318720.93	39°25'49.6192"N	80°48'22.1459"W	11241.68	335.566	0.91	-0.29	0.86	
17919.00	90.310	346.890	6403.66	11264.51	10327.73	-4670.09	1695133.78	14318813.75	39°25'50.5373"N	80°48'22.3993"W	11334.53	335.668	1.91	0.17	-1.91	
18013.00	90.120	347.560	6403.30	11358.13	10419.40	-4690.88	1695113.00	14318905.38	39°25'51.4437"N	80°48'22.6617"W	11426.64	335.762	0.74	-0.20	0.71	
18108.00	90.460	347.570	6402.82	11452.68	10512.17	-4711.33	1695092.55	14318998.11	39°25'52.3611"N	80°48'22.9199"W	11519.65	335.859	0.36	0.36	0.01	
18203.00	90.150	347.140	6402.32	11547.27	10604.86	-4732.13	1695071.76	14319090.77	39°25'53.2776"N	80°48'23.1824"W	11612.76	335.952	0.56	-0.33	-0.45	
18298.00	90.310	343.350	6401.94	11642.11	10696.71	-4756.32	1695047.58	14319182.58	39°25'54.1860"N	80°48'23.4881"W	11706.50	336.028	3.99	0.17	-3.99	
18392.00	89.910	337.820	6401.76	11736.04	10785.33	-4787.55	1695016.36	14319271.17	39°25'55.0625"N	80°48'23.8838"W	11800.17	336.064	5.90	-0.43	-5.88	
18487.00	89.940	338.500	6401.88	11830.82	10873.51	-4822.90	1694981.03	14319359.31	39°25'55.9348"N	80°48'24.3318"W	11895.11	336.081	0.72	0.03	0.72	
18582.00	90.090	339.230	6401.86	11925.68	10962.12	-4857.15	1694946.79	14319447.89	39°25'56.8113"N	80°48'24.7659"W	11990.00	336.103	0.78	0.16	0.77	
18596.00	90.000	339.260	6401.84	11939.66	10975.21	-4862.11	1694941.83	14319460.97	39°25'56.9408"N	80°48'24.8288"W	12003.97	336.106	0.68	-0.64	0.21	
18621.00†	90.000	339.260	6401.84	11964.63	10998.59	-4870.96	1694932.98	14319484.35	39°25'57.1720"N	80°48'24.9409"W	12028.94	336.113	0.00	0.00	0.00	Projected MD at TD: 18621' MD



# Actual Wellpath Report

Rockies Unit 1H AWP Proj: 18621'  
Page 10 of 12



REFERENCE WELLPATH IDENTIFICATION			
Operator	ANTERO RESOURCES CORPORATION	Well	Rockies Unit 1H
Field	Tyler	API	47-095-02658-0000
Facility	Colorado West Pad	Wellbore	Rockies Unit 1H AWB
Slot	Slot #03		

HOLE & CASING SECTIONS - Ref Wellbore: Rockies Unit 1H AWB Ref Wellpath: Rockies Unit 1H AWP Proj: 18621'									
String/Diameter	Start MD [ft]	End MD [ft]	Interval [ft]	Start TVD [ft]	End TVD [ft]	Start N/S [ft]	Start E/W [ft]	End N/S [ft]	End E/W [ft]
20in Conductor	25.00	105.00	80.00	25.00	105.00	0.00	0.00	0.40	0.36
17.5in Open Hole	105.00	434.00	329.00	105.00	433.99	0.40	0.36	-0.19	1.32
13.375in Casing Surface	25.00	434.00	409.00	25.00	433.99	0.00	0.00	-0.19	1.32
12.25in Open Hole	434.00	3068.00	2634.00	433.99	3063.07	-0.19	1.32	-95.17	-46.29
9.625in Casing Intermediate	25.00	3068.00	3043.00	25.00	3063.07	0.00	0.00	-95.17	-46.29
8.75in Open Hole	3068.00	6207.00	3139.00	3063.07	5971.05	-95.17	-46.29	-586.74	-1002.79
8.5in Open Hole	6207.00	18621.00	12414.00	5971.05	6401.84	-586.74	-1002.79	10998.59	-4870.96
5.5in Casing Production	25.00	18621.00	18596.00	25.00	6401.84	0.00	0.00	10998.59	-4870.96

TARGETS								
Name	TVD [ft]	North [ft]	East [ft]	Grid East [US ft]	Grid North [US ft]	Latitude	Longitude	Shape
Rockies Unit 1H - POE - Rev-2	6369.00	-164.71	-1272.02	1698530.50	14308325.49	39°24'6.7611"N	80°47'39.3989"W	point
Rockies Unit 1H - BHL - Rev-2	6395.00	10989.80	-4888.23	1694915.73	14319475.56	39°25'57.0855"N	80°48'25.1612"W	point
Rockies Unit 1H - LP - Rev-2	6395.00	17.19	-1330.99	1698471.55	14308507.32	39°24'8.5603"N	80°47'40.1448"W	point
Rockies Unit 1H - 50' L/R Hardline	6450.00	5412.55	-3080.12	1696723.11	14313900.53	39°25'1.9240"N	80°48'2.2750"W	rectangle
2D Rectangle 11728.4 x 100.								



# Actual Wellpath Report

Rockies Unit 1H AWP Proj: 18621'

Page 11 of 12



REFERENCE WELLPATH IDENTIFICATION			
Operator	ANTERO RESOURCES CORPORATION	Well	Rockies Unit 1H
Field	Tyler	API	47-095-02658-0000
Facility	Colorado West Pad	Wellbore	Rockies Unit 1H AWB
Slot	Slot #03		

WELLPATH COMPOSITION - Ref Wellbore: Rockies Unit 1H AWB Ref Wellpath: Rockies Unit 1H AWP Proj: 18621'					
Start MD [ft]	End MD [ft]	Positional Uncertainty Model	Log Name/Comment	Wellbore	Survey Date
25.00	518.99	Gyrodata 2015 - GC+WR+DPIPE	01 Gyrodata MS Gyro <17-1/2">(25'-508.99')	Rockies Unit 1H AWB	1/3/2020
518.99	3002.00	OWSG MWD rev2 + HRGM	02 Premier MWD <12-1/4">(508.99')(621'-2992')	Rockies Unit 1H AWB	1/3/2020
3002.00	6143.00	BH NaviTrak (2019) (Axial)	03 APS EM <8-3/4">(3002')(3057'-6143')	Rockies Unit 1H AWB	3/25/2020
6143.00	18621.00	BH AutoTrak Curve (2019) (Short spacing)	04 BH AT Curve <8-1/2">(6143')(6186'-18596')	Rockies Unit 1H AWB	3/25/2020



# Actual Wellpath Report

Rockies Unit 1H AWP Proj: 18621'

Page 12 of 12



REFERENCE WELLPATH IDENTIFICATION			
Operator	ANTERO RESOURCES CORPORATION	Well	Rockies Unit 1H
Field	Tyler	API	47-095-02658-0000
Facility	Colorado West Pad	Wellbore	Rockies Unit 1H AWB
Slot	Slot #03		

COMMENTS
<p><b>Wellpath general comments</b> API: 47-095-02658-0000 BHI Job #: 110338969A Rig: Patterson 342 Duration: 03/26/2020-03/31/2020 Gyrodatta MS Gyro &lt;17-1/2"&gt;(25'-508.99') Premier MWD &lt;12-1/4"&gt;(508.99')(621'-2992') APS EM &lt;8-3/4"&gt;(3002')(3057'-6143') BH AT Curve &lt;8-1/2"&gt;(6143')(6186'-18596') Middlesex: 6447' MD Burkett: 6680' MD Tully: 6750' MD Hamilton: 6870' MD Marcellus POE: 6932' MD Projected MD at TD: 18621' MD</p>