

ANTERO RESOURCES CORPORATION

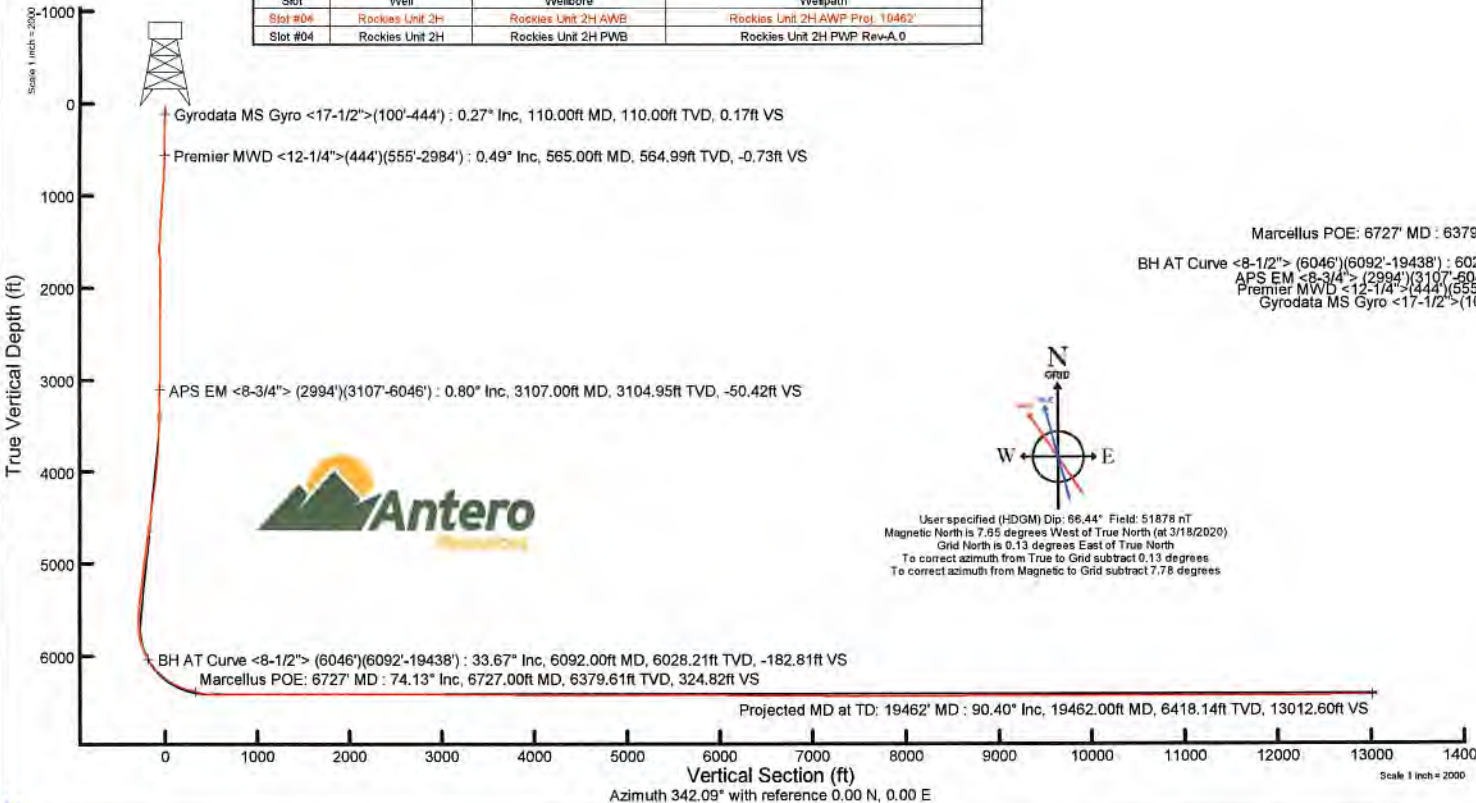
Location: Tyler County, WV Slot: Slot #04
 Field: Tyler Well: Rockies Unit 2H
 Facility: Colorado West Pad Wellbore: Rockies Unit 2H PWB

This reference wellbore is Rockies Unit 2H PWP Rev-A.0	Grid System: NAD27 / UTM Zone 17 North, US feet
True vertical depths are referenced to Patterson 342 (RKB)	North Reference: Grid north
Reference wellbore measured depths are referenced to Patterson 342 (RKB)	Scale: True distance
Patterson 342 (RKB) to Mean Sea Level: 773.5 feet	Coordinates are in feet referenced to Slot
Mean Sea Level to Ground level (At Slot: Slot #04): -748.5 feet	Depth is in feet
Other wellbore IDs are referenced to dash path's default MD datum	Created by: dclawson on 2020-03-11 Database: WA_MPL_Elasticity_Delta

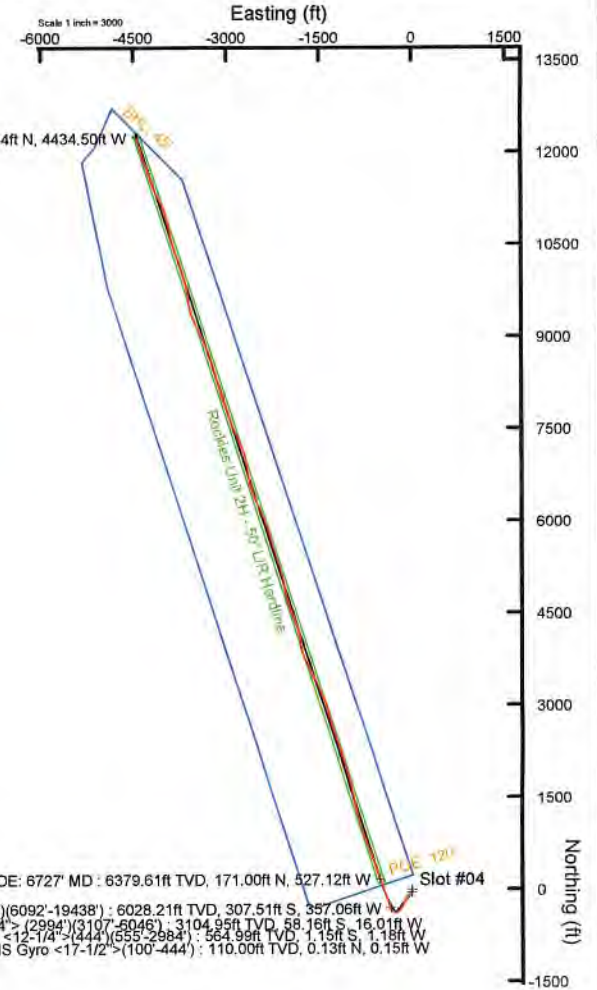
Location Information					
Facility Name	Grid East (US ft)	Grid North (US ft)	Latitude	Longitude	
Colorado West Pad	1699843.950	14308473.940	39°24'8.1990"N	80°47'22.6560"W	
Slot	Local N (ft)	Local E (ft)	Grid East (US ft)	Grid North (US ft)	Longitude
Slot #04	10.66	-27.97	1699815.990	14308464.600	39°24'8.3070"N 80°47'23.0120"W
Patterson 342 (RKB) to Ground level (At Slot: Slot #04)	25ft				
Mean Sea Level to Ground level (At Slot: Slot #04)	-748.5ft				
Patterson 342 (RKB) to Mean Sea Level	773.5ft				

Well Profile Data							
Design Comment	MD (ft)	Inc (°)	Az (°)	TVD (ft)	Local N (ft)	Local E (ft)	VS (ft)
Tie On	2994.00	0.910	218.020	2991.96	-56.72	-15.18	-49.30
Proj. To Bottom	3060.00	0.910	218.020	3057.95	-57.54	-15.82	-49.89
KOP 1	3260.00	0.910	218.020	3257.93	-60.04	-17.78	-51.87
End of Build	3728.07	10.231	218.402	3721.29	-85.48	-45.83	-76.76
Curve KOP	5656.08	10.231	218.402	5620.60	-384.13	-258.78	-286.91
POE	6660.32	74.514	342.089	6377.00	106.11	-504.67	256.17
Landing PL	6853.89	90.000	342.089	6403.00	288.07	-563.48	447.39
BHL	19464.53	90.000	342.089	6403.00	12287.56	-4441.66	13058.02

Well Data			
Slot	Well	Wellbore	Wellpath
Slot #04	Rockies Unit 2H	Rockies Unit 2H AWB	Rockies Unit 2H AWP Proj. 10462'
Slot #04	Rockies Unit 2H	Rockies Unit 2H PWB	Rockies Unit 2H PWP Rev-A.0



API: 47-095-02659-0000
 BHI Job #: 110333730A
 Rig: Patterson 342
 Duration: 03/20/2020-03/23/2020



User specified (HDGM) Dip: 66.44° Field: 51878 nT
 Magnetic North is 7.95 degrees West of True North (at 3/18/2020)
 Grid North is 0.13 degrees East of True North
 To correct azimuth from True to Grid subtract 0.13 degrees
 To correct azimuth from Magnetic to Grid subtract 7.78 degrees





Actual Wellpath Report

Rockies Unit 2H AWP Proj: 19462'
Page 1 of 12



REFERENCE WELLPATH IDENTIFICATION			
Operator	ANTERO RESOURCES CORPORATION	Well	Rockies Unit 2H
Field	Tyler	API	47-095-02659-0000
Facility	Colorado West Pad	Wellbore	Rockies Unit 2H AWB
Slot	Slot #04		

REPORT SETUP INFORMATION			
Projection System	NAD27 / UTM Zone 17 North, US feet	Software System	WellArchitect® 6.0
North Reference	Grid	User	Delaset
Scale	0.999604	Report Generated	3/30/2020 at 7:27:21 PM
Convergence at slot	0.13° East	Database	WA_MPL_EasternUS_Defn

WELLPATH LOCATION						
	Local coordinates		Grid coordinates		Geographic coordinates	
	North[ft]	East[ft]	Easting[US ft]	Northing[US ft]	Latitude	Longitude
Slot Location	10.86	-27.97	1699815.99	14308484.80	39°24'8.3070"N	80°47'23.0120"W
Facility Reference Pt			1699843.95	14308473.94	39°24'8.1990"N	80°47'22.6560"W
Field Reference Pt			0.00	0.00	0°00'0.0000"	85°29'19.3013"W

WELLPATH DATUM			
Calculation method	Minimum curvature	Patterson 342 (RKB) to Facility Vertical Datum	773.50ft
Horizontal Reference Pt	Slot	Patterson 342 (RKB) to Mean Sea Level	773.50ft
Vertical Reference Pt	Patterson 342 (RKB)	Patterson 342 (RKB) to Ground Level at Slot (Slot #04)	25.00ft
MD Reference Pt	Patterson 342 (RKB)	Section Origin	N 0.00, E 0.00 ft
Field Vertical Reference	Mean Sea Level	Section Azimuth	342.09°



Actual Wellpath Report

Rockies Unit 2H AWP Proj: 19462'
Page 2 of 12



REFERENCE WELLPATH IDENTIFICATION			
Operator	ANTERO RESOURCES CORPORATION	Well	Rockies Unit 2H
Field	Tyler	API	47-095-02659-0000
Facility	Colorado West Pad	Wellbore	Rockies Unit 2H AWB
Slot	Slot #04		

WELLPATH DATA (228 stations) † = interpolated, ‡ = extrapolated station																
MD (ft)	Inclination (°)	Azimuth (°)	TVD (ft)	Vert Sect (ft)	North (ft)	East (ft)	Grid East (US ft)	Grid North (US ft)	Latitude	Longitude	Closure Dist (ft)	Closure Dir (°)	DLS (°/100ft)	Build Rate (°/100ft)	Turn Rate (°/100ft)	Comments
0.00	0.000	311.770	0.00	0.00	0.00	0.00	1699815.99	14308484.80	39°24'8.3070"N	80°47'23.0120"W	0.00	0.000	0.00	0.00	0.00	
25.00	0.000	311.770	25.00	0.00	0.00	0.00	1699815.99	14308484.80	39°24'8.3070"N	80°47'23.0120"W	0.00	0.000	0.00	0.00	0.00	
110.00	0.270	311.770	110.00	0.17	0.13	-0.15	1699815.84	14308484.93	39°24'8.3083"N	80°47'23.0139"W	0.20	311.770	0.32	0.32	0.00	Gyrodata MS Gyro <17-1/2">(100'-444')
135.00	0.370	292.880	135.00	0.28	0.20	-0.27	1699815.72	14308485.00	39°24'8.3090"N	80°47'23.0154"W	0.34	307.317	0.58	0.40	-75.56	
160.00	0.420	287.620	160.00	0.38	0.26	-0.43	1699815.56	14308485.06	39°24'8.3096"N	80°47'23.0174"W	0.50	301.504	0.25	-0.20	-21.04	
185.00	0.330	286.530	185.00	0.48	0.31	-0.59	1699815.40	14308485.11	39°24'8.3101"N	80°47'23.0194"W	0.66	297.996	0.36	-0.36	-4.36	
210.00	0.110	227.430	210.00	0.51	0.32	-0.67	1699815.32	14308485.12	39°24'8.3102"N	80°47'23.0205"W	0.74	295.145	1.16	-0.88	-236.40	
235.00	0.230	203.580	235.00	0.46	0.25	-0.71	1699815.28	14308485.05	39°24'8.3095"N	80°47'23.0210"W	0.75	289.638	0.55	0.48	-95.40	
260.00	0.140	184.340	260.00	0.39	0.18	-0.73	1699815.26	14308484.98	39°24'8.3088"N	80°47'23.0213"W	0.75	283.581	0.43	-0.36	-76.96	
285.00	0.190	181.610	285.00	0.33	0.11	-0.74	1699815.25	14308484.91	39°24'8.3081"N	80°47'23.0213"W	0.74	278.125	0.20	0.20	-11.32	
310.00	0.180	185.390	310.00	0.25	0.02	-0.74	1699815.25	14308484.82	39°24'8.3073"N	80°47'23.0214"W	0.74	271.897	0.06	-0.04	15.52	
335.00	0.210	174.130	335.00	0.17	-0.06	-0.74	1699815.25	14308484.74	39°24'8.3064"N	80°47'23.0214"W	0.74	265.352	0.19	0.12	-45.04	
360.00	0.140	180.650	360.00	0.10	-0.14	-0.74	1699815.25	14308484.66	39°24'8.3057"N	80°47'23.0213"W	0.75	259.503	0.29	-0.28	26.08	
385.00	0.240	214.180	385.00	0.04	-0.21	-0.77	1699815.23	14308484.59	39°24'8.3050"N	80°47'23.0217"W	0.79	254.645	0.58	0.40	134.12	
410.00	0.300	200.900	410.00	-0.05	-0.31	-0.82	1699815.17	14308484.49	39°24'8.3039"N	80°47'23.0224"W	0.88	248.963	0.35	0.24	-53.12	
435.00	0.260	210.570	435.00	-0.14	-0.42	-0.87	1699815.12	14308484.38	39°24'8.3028"N	80°47'23.0231"W	0.97	243.991	0.25	-0.16	38.68	
454.00	0.250	216.440	454.00	-0.19	-0.50	-0.92	1699815.07	14308484.31	39°24'8.3022"N	80°47'23.0237"W	1.04	241.630	0.15	-0.05	30.89	
565.00	0.490	194.980	564.99	-0.73	-1.15	-1.18	1699814.81	14308483.65	39°24'8.2957"N	80°47'23.0271"W	1.65	225.856	0.25	0.22	-19.33	Premier MWD <12-1/4">(444')(555'-2984')
689.00	1.180	188.640	688.98	-2.32	-2.92	-1.51	1699814.48	14308481.88	39°24'8.2782"N	80°47'23.0313"W	3.29	207.353	0.56	0.56	-5.11	
781.00	2.560	180.460	780.93	-5.11	-5.91	-1.67	1699814.32	14308478.89	39°24'8.2486"N	80°47'23.0334"W	6.15	195.776	1.52	1.50	-8.89	
874.00	3.850	186.150	873.78	-9.94	-11.10	-2.02	1699813.97	14308473.71	39°24'8.1974"N	80°47'23.0380"W	11.28	190.328	1.43	1.39	6.12	
969.00	4.610	185.280	968.52	-16.36	-18.07	-2.72	1699813.28	14308466.74	39°24'8.1285"N	80°47'23.0471"W	18.27	188.546	0.80	0.80	-0.92	
1063.00	4.560	186.060	1062.22	-23.24	-25.55	-3.46	1699812.53	14308459.26	39°24'8.0546"N	80°47'23.0568"W	25.78	187.707	0.09	-0.05	0.83	
1158.00	4.490	193.810	1156.93	-29.86	-32.91	-4.74	1699811.25	14308451.90	39°24'7.9818"N	80°47'23.0734"W	33.25	188.201	0.65	-0.07	8.16	
1252.00	4.760	194.550	1250.62	-36.28	-40.26	-6.60	1699809.39	14308444.56	39°24'7.9093"N	80°47'23.0973"W	40.80	189.312	0.29	0.29	0.79	
1347.00	4.300	197.740	1345.32	-42.50	-47.47	-8.68	1699807.32	14308437.35	39°24'7.8381"N	80°47'23.1239"W	48.25	190.359	0.55	-0.48	3.36	
1442.00	3.300	200.130	1440.11	-47.55	-53.43	-10.70	1699805.29	14308431.39	39°24'7.7792"N	80°47'23.1499"W	54.49	191.328	1.07	-1.05	2.52	
1536.00	1.330	237.750	1534.04	-49.95	-56.55	-12.56	1699803.44	14308428.27	39°24'7.7484"N	80°47'23.1736"W	57.93	192.520	2.54	-2.10	40.02	
1631.00	0.760	296.240	1629.02	-49.78	-56.86	-14.05	1699801.94	14308427.96	39°24'7.7454"N	80°47'23.1927"W	58.57	193.884	1.20	-0.60	61.57	
1726.00	0.250	64.860	1724.02	-49.32	-56.49	-14.43	1699801.56	14308428.33	39°24'7.7490"N	80°47'23.1975"W	58.31	194.331	0.99	-0.54	135.39	



Actual Wellpath Report

Rockies Unit 2H AWP Proj: 19462'
Page 3 of 12



REFERENCE WELLPATH IDENTIFICATION			
Operator	ANTERO RESOURCES CORPORATION	Well	Rockies Unit 2H
Field	Tyler	API	47-095-02659-0000
Facility	Colorado West Pad	Wellbore	Rockies Unit 2H AWB
Slot	Slot #04		

WELLPATH DATA (228 stations)																
MD (ft)	Inclination (°)	Azimuth (°)	TVD (ft)	Vert Sect (ft)	North (ft)	East (ft)	Grid East (US ft)	Grid North (US ft)	Latitude	Longitude	Closure Dist (ft)	Closure Dir (°)	DLS ("/100ft)	Build Rate ("/100ft)	Turn Rate ("/100ft)	Comments
1821.00	0.210	91.110	1819.02	-49.35	-56.41	-14.07	1699801.92	14308428.41	39°24'7.7498"N	80°47'23.1929"W	58.14	194.006	0.12	-0.04	27.63	
1915.00	0.490	56.770	1913.02	-49.30	-56.19	-13.56	1699802.43	14308428.63	39°24'7.7520"N	80°47'23.1864"W	57.80	193.569	0.36	0.30	-36.53	
2010.00	0.250	72.660	2008.02	-49.19	-55.91	-13.02	1699802.97	14308428.92	39°24'7.7548"N	80°47'23.1795"W	57.40	193.114	0.27	-0.25	16.73	
2105.00	0.610	40.690	2103.01	-48.93	-55.46	-12.50	1699803.50	14308429.36	39°24'7.7592"N	80°47'23.1728"W	56.85	192.698	0.44	0.38	-33.65	
2199.00	0.500	9.400	2197.01	-48.31	-54.68	-12.10	1699803.89	14308430.14	39°24'7.7669"N	80°47'23.1678"W	56.00	192.482	0.34	-0.12	-33.29	
2294.00	0.600	6.380	2292.00	-47.48	-53.77	-11.98	1699804.01	14308431.05	39°24'7.7758"N	80°47'23.1662"W	55.09	192.560	0.11	0.11	-3.18	
2389.00	0.600	2.160	2387.00	-46.56	-52.78	-11.91	1699804.09	14308432.04	39°24'7.7856"N	80°47'23.1652"W	54.11	192.712	0.05	0.00	-4.44	
2483.00	0.150	148.680	2481.00	-46.22	-52.40	-11.82	1699804.17	14308432.42	39°24'7.7894"N	80°47'23.1641"W	53.71	192.717	0.78	-0.48	155.87	
2578.00	0.430	199.210	2576.00	-46.63	-52.84	-11.88	1699804.12	14308431.98	39°24'7.7851"N	80°47'23.1648"W	54.16	192.668	0.37	0.29	53.19	
2672.00	0.410	212.770	2669.99	-47.12	-53.45	-12.18	1699803.82	14308431.37	39°24'7.7790"N	80°47'23.1686"W	54.82	192.831	0.11	-0.02	14.43	
2767.00	0.770	216.450	2764.99	-47.71	-54.25	-12.74	1699803.26	14308430.57	39°24'7.7711"N	80°47'23.1758"W	55.73	193.213	0.38	0.38	3.87	
2862.00	0.890	222.640	2859.98	-48.44	-55.31	-13.62	1699802.38	14308429.51	39°24'7.7607"N	80°47'23.1871"W	56.96	193.831	0.16	0.13	6.52	
2956.00	0.940	234.340	2953.97	-49.04	-56.30	-14.74	1699801.26	14308428.53	39°24'7.7510"N	80°47'23.2014"W	58.19	194.671	0.21	0.05	12.45	
2994.00	0.910	218.020	2991.96	-49.30	-56.72	-15.18	1699800.82	14308428.11	39°24'7.7468"N	80°47'23.2070"W	58.71	194.981	0.70	-0.08	-42.95	
3107.00	0.800	200.870	3104.95	-50.42	-58.16	-16.01	1699799.99	14308426.66	39°24'7.7326"N	80°47'23.2177"W	60.32	195.392	0.25	-0.10	-15.18	APS EM <8-3/4"> (2994')(3107'-6046')
3201.00	3.700	231.690	3198.87	-51.99	-60.65	-18.63	1699797.37	14308424.17	39°24'7.7080"N	80°47'23.2510"W	63.45	197.070	3.23	3.09	32.79	
3295.00	6.090	235.340	3292.52	-54.48	-65.37	-25.11	1699790.89	14308419.45	39°24'7.6615"N	80°47'23.3337"W	70.03	201.011	2.56	2.54	3.88	
3390.00	5.730	236.410	3387.01	-57.22	-70.86	-33.20	1699782.80	14308413.97	39°24'7.6074"N	80°47'23.4370"W	78.25	205.106	0.40	-0.38	1.13	
3485.00	5.310	232.930	3481.57	-59.94	-76.13	-40.66	1699775.34	14308408.70	39°24'7.5555"N	80°47'23.5322"W	86.31	208.106	0.57	-0.44	-3.66	
3579.00	4.660	228.970	3575.22	-62.87	-81.26	-47.01	1699769.00	14308403.57	39°24'7.5049"N	80°47'23.6133"W	93.88	210.050	0.78	-0.69	-4.21	
3673.00	7.470	227.580	3668.68	-66.90	-87.89	-54.41	1699761.61	14308396.94	39°24'7.4396"N	80°47'23.7076"W	103.37	211.757	2.99	2.99	-1.48	
3771.00	7.890	220.610	3765.81	-73.06	-97.30	-63.49	1699752.53	14308387.54	39°24'7.3469"N	80°47'23.8236"W	116.18	213.125	1.04	0.43	-7.11	
3866.00	10.060	220.930	3859.64	-80.76	-108.52	-73.17	1699742.85	14308376.33	39°24'7.2362"N	80°47'23.9473"W	130.88	213.990	2.28	2.28	0.34	
3960.00	9.590	216.840	3952.26	-89.52	-120.99	-83.24	1699732.78	14308363.86	39°24'7.1132"N	80°47'24.0759"W	146.86	214.529	0.89	-0.50	-4.35	
4054.00	8.950	208.030	4045.04	-99.13	-133.71	-91.37	1699724.65	14308351.15	39°24'6.9876"N	80°47'24.1799"W	161.95	214.348	1.65	-0.68	-9.37	
4149.00	8.200	201.630	4138.98	-109.49	-146.53	-97.34	1699718.69	14308338.33	39°24'6.8610"N	80°47'24.2563"W	175.92	213.597	1.28	-0.79	-6.74	
4244.00	11.050	210.620	4232.63	-120.75	-160.66	-104.48	1699711.55	14308324.20	39°24'6.7215"N	80°47'24.3477"W	191.65	213.036	3.38	3.00	9.46	
4338.00	11.470	207.620	4324.82	-133.26	-176.70	-113.40	1699702.63	14308308.17	39°24'6.5632"N	80°47'24.4618"W	209.96	212.691	0.77	0.45	-3.19	
4433.00	10.890	203.020	4418.02	-146.66	-193.33	-121.29	1699694.75	14308291.55	39°24'6.3991"N	80°47'24.5628"W	228.22	212.103	1.12	-0.61	-4.84	
4527.00	9.910	195.920	4510.48	-160.09	-209.28	-126.98	1699689.06	14308275.60	39°24'6.2415"N	80°47'24.6357"W	244.79	211.247	1.71	-1.04	-7.55	



Actual Wellpath Report

Rockies Unit 2H AWP Proj: 19462'
Page 4 of 12



REFERENCE WELLPATH IDENTIFICATION			
Operator	ANTERO RESOURCES CORPORATION	Well	Rockies Unit 2H
Field	Tyler	API	47-095-02659-0000
Facility	Colorado West Pad	Wellbore	Rockies Unit 2H AWB
Slot	Slot #04		

WELLPATH DATA (228 stations) † = interpolated, ‡ = extrapolated station																
MD (ft)	Inclination (°)	Azimuth (°)	TVD (ft)	Vert Sect (ft)	North (ft)	East (ft)	Grid East (US ft)	Grid North (US ft)	Latitude	Longitude	Closure Dist (ft)	Closure Dir (°)	DLS (°/100ft)	Build Rate (°/100ft)	Turn Rate (°/100ft)	Comments
4624.00	10.420	210.740	4605.98	-172.82	-224.85	-133.75	1699682.29	14308260.04	39°24'6.0878"N	80°47'24.7225"W	261.62	210.747	2.74	0.53	15.28	
4719.00	12.590	219.850	4699.07	-184.02	-240.18	-144.78	1699671.27	14308244.71	39°24'5.9365"N	80°47'24.8634"W	280.45	211.082	2.97	2.28	9.59	
4814.00	12.260	214.440	4791.85	-195.71	-256.45	-157.12	1699658.93	14308228.45	39°24'5.7760"N	80°47'25.0211"W	300.76	211.495	1.27	-0.35	-5.69	
4909.00	11.630	210.870	4884.79	-208.18	-272.99	-167.74	1699648.32	14308211.92	39°24'5.6128"N	80°47'25.1569"W	320.41	211.569	1.02	-0.66	-3.76	
5003.00	10.770	207.830	4977.00	-220.55	-288.89	-176.70	1699639.36	14308196.03	39°24'5.4558"N	80°47'25.2715"W	338.65	211.452	1.11	-0.91	-3.23	
5098.00	10.560	204.020	5070.36	-233.22	-304.69	-184.39	1699631.67	14308180.23	39°24'5.2999"N	80°47'25.3699"W	356.14	211.181	0.77	-0.22	-4.01	
5193.00	10.710	216.810	5163.74	-244.80	-319.71	-193.22	1699622.84	14308165.22	39°24'5.1516"N	80°47'25.4829"W	373.56	211.147	2.48	0.16	13.46	
5288.00	11.410	221.150	5256.98	-254.73	-333.85	-204.70	1699611.38	14308151.08	39°24'5.0121"N	80°47'25.6294"W	391.61	211.514	1.14	0.74	4.57	
5383.00	11.450	214.300	5350.10	-265.34	-348.72	-216.19	1699599.88	14308136.22	39°24'4.8654"N	80°47'25.7763"W	410.30	211.797	1.43	0.04	-7.21	
5478.00	11.870	224.030	5443.15	-275.71	-363.54	-228.30	1699587.78	14308121.41	39°24'4.7193"N	80°47'25.9310"W	429.28	212.129	2.11	0.44	10.24	
5573.00	11.500	238.950	5536.20	-282.46	-375.45	-243.21	1699572.88	14308109.50	39°24'4.6019"N	80°47'26.1212"W	447.34	212.934	3.20	-0.39	15.71	
5668.00	12.470	256.690	5629.16	-283.79	-382.70	-261.31	1699554.79	14308102.26	39°24'4.5306"N	80°47'26.3520"W	463.40	214.325	3.99	1.02	18.67	
5762.00	14.130	271.620	5720.66	-279.14	-384.71	-282.66	1699533.44	14308100.24	39°24'4.5112"N	80°47'26.6241"W	477.39	216.306	4.04	1.77	15.88	
5857.00	12.960	297.840	5813.11	-267.62	-379.40	-303.69	1699512.42	14308105.55	39°24'4.5642"N	80°47'26.8919"W	485.98	218.675	6.52	-1.23	27.60	
5952.00	20.760	315.970	5904.01	-244.83	-362.28	-324.86	1699491.26	14308122.66	39°24'4.7338"N	80°47'27.1610"W	486.60	221.883	9.81	8.21	19.08	
6046.00	29.700	332.320	5989.06	-206.80	-329.58	-347.33	1699468.80	14308155.35	39°24'5.0576"N	80°47'27.4463"W	478.81	226.502	11.98	9.51	17.39	
6092.00	33.670	339.680	6028.21	-182.81	-307.51	-357.06	1699459.07	14308177.41	39°24'5.2759"N	80°47'27.5696"W	471.23	229.264	12.02	8.63	15.96	BH AT Curve <8-1/2"> (6046')(6092'-19438')
6187.00	38.160	341.640	6105.13	-127.12	-254.94	-375.47	1699440.67	14308229.96	39°24'5.7959"N	80°47'27.8026"W	453.84	235.824	4.88	4.73	2.08	
6272.00†	43.613	341.028	6169.37	-71.51	-202.25	-393.29	1699422.86	14308282.63	39°24'6.3171"N	80°47'28.0279"W	442.24	242.785	6.43	6.41	-0.72	Middlesex: 6272' MD
6281.00	44.190	340.970	6175.85	-65.27	-196.35	-395.32	1699420.83	14308288.53	39°24'6.3754"N	80°47'28.0537"W	441.40	243.587	6.43	6.42	-0.64	
6376.00	52.900	340.830	6238.69	5.85	-129.14	-418.60	1699397.56	14308355.71	39°24'7.0403"N	80°47'28.3483"W	438.07	252.855	9.17	9.17	-0.15	
6423.00	56.960	340.850	6265.69	44.30	-92.81	-431.22	1699384.94	14308392.03	39°24'7.3996"N	80°47'28.5080"W	441.10	257.854	8.64	8.64	0.04	
6470.00	62.150	340.650	6289.49	84.79	-54.57	-444.58	1699371.59	14308430.25	39°24'7.7779"N	80°47'28.6770"W	447.91	263.002	11.05	11.04	-0.43	
6509.00†	65.071	340.483	6306.83	119.71	-21.63	-456.20	1699359.97	14308463.18	39°24'8.1037"N	80°47'28.8241"W	456.71	267.286	7.50	7.49	-0.43	Burkett: 6509' MD
6517.00	65.670	340.450	6310.16	126.98	-14.77	-458.63	1699357.54	14308470.03	39°24'8.1715"N	80°47'28.8549"W	458.87	268.155	7.50	7.49	-0.42	
6565.00	68.910	340.210	6328.69	171.23	26.91	-473.53	1699342.64	14308511.70	39°24'8.5839"N	80°47'29.0435"W	474.30	273.253	6.77	6.75	-0.50	
6585.00†	69.757	340.107	6335.75	189.93	44.52	-479.89	1699336.29	14308529.30	39°24'8.7580"N	80°47'29.1239"W	481.95	275.300	4.26	4.23	-0.51	Tully: 6585' MD
6612.00	70.900	339.970	6344.84	215.34	68.41	-488.57	1699327.62	14308553.19	39°24'8.9944"N	80°47'29.2337"W	493.33	277.971	4.26	4.23	-0.51	
6659.00	71.980	339.490	6359.80	259.86	110.21	-504.00	1699312.19	14308594.96	39°24'9.4078"N	80°47'29.4291"W	515.91	282.334	2.49	2.30	-1.02	
6690.00†	72.962	339.206	6369.13	289.39	137.87	-514.43	1699301.77	14308622.61	39°24'9.6814"N	80°47'29.5611"W	532.58	285.003	3.29	3.17	-0.91	Hamilton: 6690' MD



Actual Wellpath Report

Rockies Unit 2H AWP Proj: 19462'
Page 5 of 12



REFERENCE WELLPATH IDENTIFICATION				
Operator	ANTERO RESOURCES CORPORATION		Well	Rockies Unit 2H
Field	Tyler		API	47-095-02659-0000
Facility	Colorado West Pad		Wellbore	Rockies Unit 2H AWB
Slot	Slot #04			

WELLPATH DATA (228 stations) † = interpolated, ‡ = extrapolated station																
MD [ft]	Inclination [°]	Azimuth [°]	TVD [ft]	Vert Sect [ft]	North [ft]	East [ft]	Grid East [US ft]	Grid North [US ft]	Latitude	Longitude	Closure Dist [ft]	Closure Dir [°]	DLS ["/100ft]	Build Rate ["/100ft]	Turn Rate ["/100ft]	Comments
6727.00†	74.134	338.872	6379.61	324.82	171.00	-527.12	1699289.08	14308655.74	39°24'10.0092"N	80°47'29.7219"W	554.17	287.974	3.29	3.17	-0.90	Marcellus POE: 6727' MD
6754.00	74.990	338.630	6386.80	350.80	195.26	-536.55	1699279.65	14308679.98	39°24'10.2492"N	80°47'29.8413"W	570.98	289.997	3.29	3.17	-0.90	
6849.00	84.420	341.650	6403.76	444.10	283.07	-568.23	1699247.98	14308767.76	39°24'11.1178"N	80°47'30.2423"W	634.84	296.481	10.41	9.93	3.18	
6944.00	90.280	343.720	6408.15	538.95	373.63	-596.46	1699219.77	14308858.28	39°24'12.0135"N	80°47'30.5992"W	703.82	302.063	6.54	6.17	2.18	
7039.00	90.400	340.560	6407.59	633.93	464.04	-625.59	1699190.65	14308948.65	39°24'12.9077"N	80°47'30.9677"W	778.91	306.566	3.33	0.13	-3.33	
7134.00	89.970	336.620	6407.28	728.74	552.46	-660.26	1699155.99	14309037.04	39°24'13.7824"N	80°47'31.4068"W	860.91	309.920	4.17	-0.45	-4.15	
7228.00	89.850	337.270	6407.43	822.36	638.96	-697.08	1699119.19	14309123.50	39°24'14.6381"N	80°47'31.8732"W	945.61	312.509	0.70	-0.13	0.69	
7322.00	90.400	338.620	6407.22	916.11	726.07	-732.37	1699083.91	14309210.59	39°24'15.4999"N	80°47'32.3203"W	1031.29	314.753	1.55	0.59	1.44	
7416.00	90.710	337.690	6406.31	1009.88	813.32	-767.35	1699048.95	14309297.80	39°24'16.3630"N	80°47'32.7633"W	1118.17	316.666	1.04	0.33	-0.99	
7511.00	90.650	342.100	6405.19	1104.78	902.50	-799.99	1699016.32	14309386.94	39°24'17.2452"N	80°47'33.1765"W	1206.02	318.446	4.64	-0.06	4.64	
7605.00	90.620	344.310	6404.14	1198.75	992.48	-827.15	1698989.17	14309476.89	39°24'18.1351"N	80°47'33.5199"W	1291.97	320.192	2.35	-0.03	2.35	
7700.00	90.740	344.110	6403.02	1293.68	1083.89	-853.00	1698963.33	14309568.26	39°24'19.0392"N	80°47'33.8465"W	1379.28	321.798	0.25	0.13	-0.21	
7794.00	89.820	345.860	6402.56	1387.56	1174.68	-877.35	1698938.99	14309659.01	39°24'19.9370"N	80°47'34.1541"W	1466.15	323.244	2.10	-0.98	1.86	
7889.00	89.970	347.410	6402.73	1482.25	1267.10	-899.31	1698917.04	14309751.40	39°24'20.8510"N	80°47'34.4311"W	1553.80	324.635	1.64	0.16	1.63	
7984.00	89.880	348.920	6402.86	1576.72	1360.08	-918.79	1698897.56	14309844.34	39°24'21.7703"N	80°47'34.6766"W	1641.34	325.959	1.59	-0.09	1.59	
8078.00	89.910	347.910	6403.03	1670.14	1452.16	-937.67	1698878.70	14309936.38	39°24'22.6809"N	80°47'34.9144"W	1728.58	327.149	1.07	0.03	-1.07	
8173.00	89.820	347.890	6403.25	1764.66	1545.05	-957.58	1698858.79	14310029.24	39°24'23.5994"N	80°47'35.1654"W	1817.73	328.210	0.10	-0.09	-0.02	
8268.00	89.910	346.840	6403.48	1859.25	1637.75	-978.36	1698838.02	14310121.90	39°24'24.5160"N	80°47'35.4274"W	1907.72	329.147	1.11	0.09	-1.11	
8362.00	90.150	345.300	6403.43	1953.02	1728.98	-1000.99	1698815.40	14310213.09	39°24'25.4183"N	80°47'35.7130"W	1997.84	329.931	1.66	0.26	-1.64	
8457.00	89.910	344.950	6403.38	2047.89	1820.80	-1025.38	1698791.02	14310304.87	39°24'26.3263"N	80°47'36.0210"W	2089.66	330.614	0.45	-0.25	-0.37	
8552.00	89.780	344.290	6403.63	2142.80	1912.39	-1050.57	1698765.84	14310396.43	39°24'27.2321"N	80°47'36.3394"W	2181.96	331.218	0.71	-0.14	-0.69	
8646.00	90.000	343.460	6403.81	2236.75	2002.69	-1076.68	1698739.74	14310486.70	39°24'28.1252"N	80°47'36.6693"W	2273.77	331.737	0.91	0.23	-0.88	
8741.00	89.940	341.800	6403.86	2331.74	2093.36	-1105.04	1698711.39	14310577.33	39°24'29.0219"N	80°47'37.0280"W	2367.12	332.171	1.75	-0.06	-1.75	
8836.00	89.600	340.850	6404.24	2426.73	2183.36	-1135.46	1698680.98	14310667.29	39°24'29.9121"N	80°47'37.4129"W	2460.96	332.523	1.06	-0.36	-1.00	
8930.00	90.000	339.570	6404.57	2520.68	2271.80	-1167.28	1698649.17	14310755.70	39°24'30.7870"N	80°47'37.8158"W	2554.14	332.805	1.43	0.43	-1.36	
9025.00	89.600	339.590	6404.90	2615.59	2360.83	-1200.43	1698616.04	14310844.69	39°24'31.6677"N	80°47'38.2354"W	2648.50	333.048	0.42	-0.42	0.02	
9119.00	89.750	342.710	6405.44	2709.56	2449.78	-1230.79	1698585.68	14310933.60	39°24'32.5474"N	80°47'38.6197"W	2741.58	333.325	3.32	0.16	3.32	
9214.00	89.570	344.230	6406.00	2804.53	2540.85	-1257.82	1698558.67	14311024.64	39°24'33.4481"N	80°47'38.9614"W	2835.14	333.663	1.61	-0.18	1.60	
9308.00	89.350	343.060	6406.89	2898.49	2631.04	-1284.29	1698532.21	14311114.79	39°24'34.3401"N	80°47'39.2960"W	2927.76	333.982	1.27	-0.23	-1.24	
9403.00	89.820	343.230	6407.58	2993.47	2721.95	-1311.83	1698504.68	14311205.67	39°24'35.2393"N	80°47'39.6443"W	3021.58	334.268	0.53	0.49	0.18	



Actual Wellpath Report

Rockies Unit 2H AWP Proj: 19462'
Page 6 of 12



REFERENCE WELLPATH IDENTIFICATION			
Operator	ANTERO RESOURCES CORPORATION	Well	Rockies Unit 2H
Field	Tyler	API	47-095-02659-0000
Facility	Colorado West Pad	Wellbore	Rockies Unit 2H AWB
Slot	Slot #04		

WELLPATH DATA (228 stations)																
MD (ft)	Inclination (°)	Azimuth (°)	TVD (ft)	Vert Sect (ft)	North (ft)	East (ft)	Grid East (US ft)	Grid North (US ft)	Latitude	Longitude	Closure Dist (ft)	Closure Dir (°)	DLS (°/100ft)	Build Rate (°/100ft)	Turn Rate (°/100ft)	Comments
9497.00	89.510	344.850	6408.13	3087.41	2812.33	-1337.68	1698478.84	14311296.01	39°24'36.1331"N	80°47'39.9709"W	3114.25	334.562	1.75	-0.33	1.72	
9591.00	89.690	345.710	6408.78	3181.26	2903.24	-1361.56	1698454.97	14311386.88	39°24'37.0322"N	80°47'40.2726"W	3206.66	334.874	0.93	0.19	0.91	
9686.00	89.480	342.200	6409.47	3276.19	2994.52	-1387.82	1698428.73	14311478.13	39°24'37.9349"N	80°47'40.6044"W	3300.48	335.135	3.70	-0.22	-3.69	
9781.00	89.570	339.470	6410.26	3371.16	3084.24	-1419.00	1698397.55	14311567.82	39°24'38.8224"N	80°47'40.9991"W	3395.01	335.294	2.88	0.09	-2.87	
9875.00	89.420	336.410	6411.09	3464.90	3171.35	-1454.30	1698362.27	14311654.89	39°24'39.6841"N	80°47'41.4463"W	3488.90	335.365	3.26	-0.16	-3.26	
9970.00	89.510	334.380	6411.97	3559.24	3257.71	-1493.85	1698322.73	14311741.22	39°24'40.5386"N	80°47'41.9477"W	3583.89	335.366	2.14	0.09	-2.14	
10064.00	89.480	333.480	6412.80	3652.28	3342.15	-1535.16	1698281.44	14311825.62	39°24'41.3740"N	80°47'42.4715"W	3677.86	335.329	0.96	-0.03	-0.96	
10158.00	89.450	331.830	6413.68	3745.00	3425.63	-1578.33	1698238.29	14311909.07	39°24'42.2001"N	80°47'43.0192"W	3771.75	335.263	1.76	-0.03	-1.76	
10252.00	89.260	334.110	6414.74	3837.80	3509.36	-1621.05	1698195.59	14311992.76	39°24'43.0285"N	80°47'43.5610"W	3865.67	335.207	2.43	-0.20	2.43	
10346.00	90.030	335.140	6415.32	3931.00	3594.28	-1661.33	1698155.32	14312077.65	39°24'43.8688"N	80°47'44.0717"W	3959.66	335.193	1.37	0.82	1.10	
10441.00	89.540	336.770	6415.68	4025.46	3681.04	-1700.03	1698116.63	14312164.37	39°24'44.7271"N	80°47'44.5624"W	4054.64	335.211	1.79	-0.52	1.72	
10536.00	89.450	337.720	6416.51	4120.11	3768.64	-1736.78	1698079.90	14312251.94	39°24'45.5937"N	80°47'45.0280"W	4149.58	335.257	1.00	-0.09	1.00	
10631.00	89.940	342.920	6417.02	4215.03	3858.06	-1768.76	1698047.94	14312341.32	39°24'46.4782"N	80°47'45.4329"W	4244.19	335.371	5.50	0.52	5.47	
10725.00	90.180	350.070	6416.92	4308.69	3949.40	-1790.70	1698026.01	14312432.63	39°24'47.3815"N	80°47'45.7098"W	4336.40	335.610	7.61	0.26	7.61	
10820.00	90.000	353.930	6416.77	4402.26	4043.46	-1803.92	1698012.79	14312526.65	39°24'48.3114"N	80°47'45.8755"W	4427.60	335.957	4.07	-0.19	4.06	
10914.00	90.090	349.480	6416.70	4494.91	4136.45	-1817.47	1697999.24	14312619.60	39°24'49.2308"N	80°47'46.0455"W	4518.12	336.280	4.74	0.10	-4.73	
11009.00	90.030	343.350	6416.60	4589.60	4228.75	-1839.78	1697976.95	14312711.86	39°24'50.1435"N	80°47'46.3271"W	4611.62	336.488	6.45	-0.06	-6.45	
11103.00	89.480	337.700	6417.00	4683.52	4317.33	-1871.10	1697945.63	14312800.41	39°24'51.0198"N	80°47'46.7236"W	4705.36	336.568	6.04	-0.59	-6.01	
11198.00	89.910	336.590	6417.51	4778.17	4404.87	-1908.00	1697908.75	14312887.92	39°24'51.8858"N	80°47'47.1912"W	4800.35	336.580	1.25	0.45	-1.17	
11292.00	89.910	338.730	6417.65	4871.88	4491.81	-1943.73	1697873.04	14312974.82	39°24'52.7458"N	80°47'47.6439"W	4894.33	336.601	2.28	0.00	2.28	
11387.00	89.600	340.820	6418.06	4966.80	4580.95	-1976.57	1697840.21	14313063.92	39°24'53.6275"N	80°47'48.0598"W	4989.18	336.661	2.22	-0.33	2.20	
11481.00	89.820	343.330	6418.54	5060.79	4670.38	-2005.49	1697811.29	14313153.32	39°24'54.5121"N	80°47'48.4258"W	5082.76	336.761	2.68	0.23	2.67	
11576.00	89.720	346.570	6418.92	5155.66	4762.10	-2030.16	1697786.64	14313245.01	39°24'55.4192"N	80°47'48.7374"W	5176.79	336.911	3.41	-0.11	3.41	
11671.00	89.850	349.350	6419.27	5250.15	4855.00	-2049.97	1697766.83	14313337.87	39°24'56.3378"N	80°47'48.9872"W	5270.05	337.109	2.93	0.14	2.93	
11766.00	89.940	349.600	6419.45	5344.36	4948.41	-2067.33	1697749.49	14313431.24	39°24'57.2613"N	80°47'49.2056"W	5362.89	337.326	0.28	0.09	0.26	
11861.00	90.220	348.210	6419.32	5438.69	5041.63	-2085.61	1697731.21	14313524.42	39°24'58.1831"N	80°47'49.4359"W	5455.98	337.526	1.49	0.29	-1.46	
11955.00	90.090	345.170	6419.06	5532.37	5133.09	-2107.25	1697709.58	14313615.85	39°24'59.0876"N	80°47'49.7090"W	5548.79	337.681	3.24	-0.14	-3.23	
12049.00	89.820	342.200	6419.14	5626.32	5223.30	-2133.65	1697683.19	14313706.02	39°24'59.9797"N	80°47'50.0428"W	5642.28	337.781	3.17	-0.29	-3.16	
12144.00	90.090	340.450	6419.21	5721.31	5313.29	-2164.07	1697652.78	14313795.98	39°25'0.8698"N	80°47'50.4278"W	5737.09	337.839	1.86	0.28	-1.84	
12239.00	89.940	341.370	6419.19	5816.29	5403.07	-2195.14	1697621.73	14313885.72	39°25'1.7578"N	80°47'50.8211"W	5831.96	337.889	0.98	-0.16	0.97	



Actual Wellpath Report

Rockies Unit 2H AWP Proj: 19462'
Page 7 of 12



REFERENCE WELLPATH IDENTIFICATION			
Operator	ANTERO RESOURCES CORPORATION	Well	Rockies Unit 2H
Field	Tyler	API	47-095-02659-0000
Facility	Colorado West Pad	Wellbore	Rockies Unit 2H AWB
Slot	Slot #04		

WELLPATH DATA (228 stations)																
MD [ft]	Inclination [°]	Azimuth [°]	TVD [ft]	Vert Sect [ft]	North [ft]	East [ft]	Grid East [US ft]	Grid North [US ft]	Latitude	Longitude	Closure Dist [ft]	Closure Dir [°]	DLS ["/100ft]	Build Rate ["/100ft]	Turn Rate ["/100ft]	Comments
12334.00	89.940	342.930	6419.28	5911.29	5493.49	-2224.26	1697592.62	14313976.10	39°25'2.6522"N	80°47'51.1896"W	5926.70	337.957	1.64	0.00		1.64
12428.00	89.260	344.900	6419.94	6005.23	5583.80	-2250.30	1697566.59	14314066.38	39°25'3.5453"N	80°47'51.5188"W	6020.19	338.050	2.22	-0.72		2.10
12523.00	89.380	344.520	6421.07	6100.13	5675.43	-2275.35	1697541.55	14314157.97	39°25'4.4515"N	80°47'51.8354"W	6114.55	338.154	0.42	0.13		-0.40
12618.00	89.420	344.210	6422.06	6195.05	5766.91	-2300.95	1697515.96	14314249.42	39°25'5.3562"N	80°47'52.1590"W	6209.00	338.248	0.33	0.04		-0.33
12713.00	89.200	342.620	6423.21	6290.01	5857.95	-2328.06	1697488.85	14314340.42	39°25'6.2566"N	80°47'52.5018"W	6303.61	338.326	1.69	-0.23		-1.67
12807.00	89.110	341.050	6424.59	6384.00	5947.25	-2357.36	1697459.56	14314429.69	39°25'7.1399"N	80°47'52.8726"W	6397.42	338.378	1.67	-0.10		-1.67
12902.00	89.540	337.770	6425.71	6478.87	6036.17	-2390.77	1697426.17	14314518.56	39°25'8.0194"N	80°47'53.2957"W	6492.39	338.393	3.48	0.45		-3.45
12996.00	89.850	336.870	6426.21	6572.55	6122.90	-2427.01	1697389.95	14314605.26	39°25'8.8774"N	80°47'53.7551"W	6586.37	338.377	1.01	0.33		-0.96
13091.00	90.060	334.820	6426.29	6666.98	6209.57	-2465.88	1697351.09	14314691.90	39°25'9.7349"N	80°47'54.2479"W	6681.27	338.341	2.17	0.22		-2.16
13185.00	90.000	335.460	6426.24	6760.29	6294.86	-2505.40	1697311.59	14314777.16	39°25'10.5787"N	80°47'54.7490"W	6775.13	338.297	0.68	-0.06		0.68
13280.00	89.940	337.160	6426.29	6854.80	6381.85	-2543.57	1697273.43	14314864.11	39°25'11.4393"N	80°47'55.2329"W	6870.07	338.270	1.79	-0.06		1.79
13374.00	89.630	340.550	6426.64	6948.63	6469.51	-2577.47	1697239.54	14314951.74	39°25'12.3064"N	80°47'55.6624"W	6964.05	338.278	3.62	-0.33		3.61
13469.00	89.630	343.410	6427.26	7043.62	6559.84	-2606.86	1697210.17	14315042.03	39°25'13.1999"N	80°47'56.0342"W	7058.84	338.327	3.01	0.00		3.01
13564.00	89.750	347.580	6427.77	7138.43	6651.79	-2630.65	1697186.39	14315133.94	39°25'14.1092"N	80°47'56.3348"W	7153.08	338.422	4.39	0.13		4.39
13659.00	89.690	351.320	6428.23	7232.63	6745.17	-2648.04	1697169.01	14315227.28	39°25'15.0324"N	80°47'56.5537"W	7246.34	338.566	3.94	-0.06		3.94
13753.00	90.150	352.600	6428.37	7325.24	6838.24	-2661.18	1697155.87	14315320.32	39°25'15.9526"N	80°47'56.7186"W	7337.81	338.736	1.45	0.49		1.36
13848.00	89.860	350.570	6428.37	7418.93	6932.21	-2675.08	1697141.97	14315414.25	39°25'16.8817"N	80°47'56.8931"W	7430.45	338.899	2.16	-0.32		-2.14
13942.00	89.970	347.380	6428.51	7512.24	7024.47	-2693.06	1697124.00	14315506.47	39°25'17.7939"N	80°47'57.1195"W	7523.01	339.024	3.40	0.13		-3.39
14037.00	89.820	342.540	6428.69	7607.09	7116.18	-2717.70	1697099.37	14315598.15	39°25'18.7009"N	80°47'57.4309"W	7617.48	339.098	5.10	-0.16		-5.09
14132.00	89.970	337.130	6428.86	7701.99	7205.33	-2750.44	1697066.64	14315687.26	39°25'19.5827"N	80°47'57.8455"W	7712.44	339.107	5.70	0.16		-5.69
14226.00	89.880	335.700	6428.98	7795.52	7291.47	-2788.05	1697029.05	14315773.37	39°25'20.4349"N	80°47'58.3223"W	7806.33	339.075	1.52	-0.10		-1.52
14321.00	90.090	333.550	6429.01	7889.71	7377.30	-2828.76	1696988.36	14315859.17	39°25'21.2841"N	80°47'58.8386"W	7901.04	339.021	2.27	0.22		-2.26
14415.00	90.180	334.180	6428.79	7982.74	7461.69	-2870.16	1696946.97	14315943.52	39°25'22.1191"N	80°47'59.3639"W	7994.67	338.961	0.68	0.10		0.67
14510.00	89.970	338.360	6428.66	8077.23	7548.64	-2908.39	1696908.76	14316030.44	39°25'22.9793"N	80°47'59.8484"W	8089.54	338.929	4.41	-0.22		4.40
14605.00	90.030	340.290	6428.66	8172.12	7637.52	-2941.93	1696875.24	14316119.28	39°25'23.8584"N	80°48'0.2733"W	8184.53	338.934	2.03	0.06		2.03
14699.00	90.150	341.400	6428.52	8266.09	7726.31	-2972.77	1696844.40	14316208.04	39°25'24.7367"N	80°48'0.6638"W	8278.48	338.955	1.19	0.13		1.18
14794.00	90.180	341.960	6428.24	8361.09	7816.50	-3002.63	1696814.56	14316298.19	39°25'25.6287"N	80°48'1.0418"W	8373.37	338.986	0.59	0.03		0.59
14888.00	90.060	340.930	6428.05	8455.08	7905.61	-3032.54	1696784.66	14316387.26	39°25'26.5101"N	80°48'1.4205"W	8467.29	339.014	1.10	-0.13		-1.10
14982.00	89.940	341.840	6428.05	8549.08	7994.69	-3062.55	1696754.66	14316476.31	39°25'27.3912"N	80°48'1.8003"W	8561.21	339.040	0.98	-0.13		0.97
15077.00	90.490	342.590	6427.69	8644.07	8085.15	-3091.56	1696725.66	14316566.73	39°25'28.2858"N	80°48'2.1675"W	8656.06	339.074	0.98	0.58		0.79



Actual Wellpath Report

Rockies Unit 2H AWP Proj: 19462'
Page 8 of 12



REFERENCE WELLPATH IDENTIFICATION			
Operator	ANTERO RESOURCES CORPORATION	Well	Rockies Unit 2H
Field	Tyler	API	47-095-02659-0000
Facility	Colorado West Pad	Wellbore	Rockies Unit 2H AWB
Slot	Slot #04		

WELLPATH DATA (228 stations)																
MD [ft]	Inclination [°]	Azimuth [°]	TVD [ft]	Vert Sect [ft]	North [ft]	East [ft]	Grid East [US ft]	Grid North [US ft]	Latitude	Longitude	Closure Dist [ft]	Closure Dir [°]	DLS [°/100ft]	Build Rate [°/100ft]	Turn Rate [°/100ft]	Comments
15172.00	90.580	342.360	6426.80	8739.07	8175.73	-3120.17	1696697.06	14316657.28	39°25'29.1818"N	80°48'2.5295"W	8750.89	339.111	0.26	0.09	-0.24	
15267.00	90.310	344.660	6426.06	8834.03	8266.82	-3147.13	1696670.11	14316748.33	39°25'30.0826"N	80°48'2.8705"W	8845.60	339.158	2.44	-0.28	2.42	
15361.00	90.310	345.490	6425.56	8927.90	8357.65	-3171.34	1696645.91	14316839.12	39°25'30.9808"N	80°48'3.1764"W	8939.11	339.221	0.88	0.00	0.88	
15456.00	90.430	344.370	6424.94	9022.78	8449.37	-3196.04	1696621.22	14316930.81	39°25'31.8879"N	80°48'3.4886"W	9033.64	339.280	1.19	0.13	-1.18	
15551.00	90.340	341.970	6424.30	9117.75	8540.30	-3223.54	1696593.73	14317021.70	39°25'32.7872"N	80°48'3.8365"W	9128.41	339.321	2.53	-0.09	-2.53	
15646.00	90.250	342.840	6423.81	9212.75	8630.85	-3252.26	1696565.03	14317112.22	39°25'33.6828"N	80°48'4.1999"W	9223.27	339.353	0.92	-0.09	0.92	
15740.00	90.120	339.570	6423.51	9306.72	8719.83	-3282.54	1696534.76	14317201.16	39°25'34.5628"N	80°48'4.5833"W	9317.21	339.371	3.48	-0.14	-3.48	
15835.00	90.250	337.080	6423.20	9401.51	8808.10	-3317.62	1696499.69	14317289.40	39°25'35.4360"N	80°48'5.0279"W	9412.19	339.361	2.62	0.14	-2.62	
15929.00	90.060	335.500	6422.95	9495.03	8894.16	-3355.42	1696461.90	14317375.42	39°25'36.2875"N	80°48'5.5072"W	9506.05	339.330	1.69	-0.20	-1.68	
16024.00	90.180	335.840	6422.75	9589.43	8980.73	-3394.56	1696422.78	14317461.95	39°25'37.1439"N	80°48'6.0035"W	9600.86	339.294	0.38	0.13	0.36	
16119.00	89.570	334.660	6422.96	9683.75	9067.00	-3434.33	1696383.02	14317548.19	39°25'37.9974"N	80°48'6.5079"W	9695.62	339.255	1.40	-0.64	-1.24	
16214.00	90.280	332.480	6423.08	9777.70	9152.06	-3476.61	1696340.76	14317633.22	39°25'38.8390"N	80°48'7.0444"W	9790.15	339.200	2.41	0.75	-2.29	
16309.00	90.280	335.970	6422.62	9871.79	9237.60	-3517.92	1696299.47	14317718.72	39°25'39.6853"N	80°48'7.5683"W	9884.78	339.152	3.67	0.00	3.67	
16404.00	89.750	340.800	6422.59	9966.56	9325.89	-3552.90	1696264.50	14317806.98	39°25'40.5587"N	80°48'8.0117"W	9979.75	339.145	5.11	-0.56	5.08	
16498.00	89.940	344.510	6422.85	10060.54	9415.60	-3580.92	1696236.50	14317896.65	39°25'41.4459"N	80°48'8.3662"W	10073.55	339.177	3.95	0.20	3.95	
16593.00	89.880	350.720	6423.00	10155.05	9508.34	-3601.29	1696216.14	14317989.36	39°25'42.3630"N	80°48'8.6232"W	10167.49	339.256	6.54	-0.06	6.54	
16687.00	89.970	352.130	6423.12	10247.81	9601.29	-3615.30	1696202.13	14318082.27	39°25'43.2820"N	80°48'8.7992"W	10259.39	339.366	1.50	0.10	1.50	
16782.00	90.030	350.530	6423.12	10341.57	9695.20	-3629.62	1696187.81	14318176.14	39°25'44.2104"N	80°48'8.9790"W	10352.35	339.475	1.69	0.06	-1.68	
16876.00	90.000	349.440	6423.10	10434.68	9787.77	-3645.97	1696171.47	14318268.67	39°25'45.1257"N	80°48'9.1848"W	10444.78	339.570	1.16	-0.03	-1.16	
16971.00	90.310	346.620	6422.84	10529.16	9880.69	-3665.67	1696151.78	14318361.58	39°25'46.0445"N	80°48'9.4333"W	10538.75	339.645	2.99	0.33	-2.97	
17065.00	90.250	345.010	6422.38	10622.95	9971.82	-3688.70	1696128.76	14318452.65	39°25'46.9457"N	80°48'9.7243"W	10632.20	339.700	1.71	-0.06	-1.71	
17160.00	89.820	342.800	6422.32	10717.90	10063.09	-3715.04	1696102.43	14318543.89	39°25'47.8483"N	80°48'10.0573"W	10726.94	339.737	2.37	-0.45	-2.33	
17254.00	89.750	341.710	6422.67	10811.90	10152.62	-3743.69	1696073.79	14318633.38	39°25'48.7338"N	80°48'10.4199"W	10820.85	339.759	1.16	-0.07	-1.16	
17348.00	89.450	337.870	6423.33	10905.80	10240.81	-3776.15	1696041.34	14318721.54	39°25'49.6061"N	80°48'10.8312"W	10914.83	339.759	4.10	-0.32	-4.09	
17442.00	89.940	339.260	6423.83	10999.62	10328.31	-3810.50	1696007.00	14318809.00	39°25'50.4716"N	80°48'11.2666"W	11008.81	339.749	1.57	0.52	1.48	
17537.00	89.690	344.080	6424.14	11094.59	10418.46	-3840.37	1695977.15	14318899.11	39°25'51.3633"N	80°48'11.6447"W	11103.73	339.765	5.08	-0.26	5.07	
17631.00	89.720	345.840	6424.62	11188.47	10509.23	-3864.76	1695952.77	14318989.85	39°25'52.2610"N	80°48'11.9530"W	11197.34	339.809	1.87	0.03	1.87	
17726.00	89.720	345.780	6425.09	11283.27	10601.33	-3888.05	1695929.49	14319081.92	39°25'53.1717"N	80°48'12.2472"W	11291.82	339.859	0.06	0.00	-0.06	
17821.00	89.880	347.290	6425.42	11377.98	10693.72	-3910.17	1695907.38	14319174.26	39°25'54.0853"N	80°48'12.5266"W	11386.18	339.915	1.60	0.17	1.59	
17916.00	90.280	348.070	6425.28	11472.52	10786.53	-3930.44	1695887.11	14319267.04	39°25'55.0030"N	80°48'12.7823"W	11480.31	339.979	0.92	0.42	0.82	



Actual Wellpath Report

Rockies Unit 2H AWP Proj: 19462'
Page 9 of 12



REFERENCE WELLPATH IDENTIFICATION			
Operator	ANTERO RESOURCES CORPORATION	Well	Rockies Unit 2H
Field	Tyler	API	47-095-02659-0000
Facility	Colorado West Pad	Wellbore	Rockies Unit 2H AWB
Slot	Slot #04		

WELLPATH DATA (228 stations) † = interpolated, ‡ = extrapolated station																
MD [ft]	Inclination [°]	Azimuth [°]	TVD [ft]	Vert Sect [ft]	North [ft]	East [ft]	Grid East [US ft]	Grid North [US ft]	Latitude	Longitude	Closure Dist [ft]	Closure Dir [°]	DLS [°/100ft]	Build Rate [°/100ft]	Turn Rate [°/100ft]	Comments
18011.00	90.120	347.830	6424.95	11567.03	10879.44	-3950.27	1695867.29	14319359.91	39°25'55.9217"N	80°48'13.0325"W	11574.40	340.044	0.30	-0.17	-0.25	
18106.00	90.180	346.980	6424.70	11661.62	10972.15	-3970.99	1695846.58	14319452.58	39°25'56.8385"N	80°48'13.2939"W	11668.63	340.104	0.90	0.06	-0.89	
18200.00	90.980	340.690	6423.75	11755.52	11062.38	-3997.14	1695820.44	14319542.78	39°25'57.7309"N	80°48'13.6248"W	11762.38	340.134	6.74	0.85	-6.69	
18295.00	90.280	330.960	6422.70	11849.83	11148.94	-4036.00	1695781.60	14319629.30	39°25'58.5872"N	80°48'14.1176"W	11856.99	340.099	10.27	-0.74	-10.24	
18389.00	89.750	330.320	6422.68	11941.96	11230.87	-4082.09	1695735.53	14319711.20	39°25'59.3979"N	80°48'14.7027"W	11949.72	340.025	0.88	-0.56	-0.68	
18484.00	90.280	335.270	6422.66	12035.68	11315.33	-4125.50	1695692.13	14319795.63	39°26'0.2336"N	80°48'15.2537"W	12043.94	339.968	5.24	0.56	5.21	
18579.00	90.220	340.630	6422.24	12130.40	11403.35	-4161.16	1695656.49	14319883.61	39°26'1.1043"N	80°48'15.7056"W	12138.85	339.953	5.64	-0.06	5.64	
18673.00	90.340	341.610	6421.78	12224.39	11492.29	-4191.57	1695626.09	14319972.52	39°26'1.9840"N	80°48'16.0908"W	12232.82	339.962	1.05	0.13	1.04	
18768.00	90.250	342.460	6421.29	12319.38	11582.66	-4220.87	1695596.80	14320062.85	39°26'2.8777"N	80°48'16.4617"W	12327.76	339.978	0.90	-0.09	0.89	
18862.00	90.030	341.610	6421.06	12413.38	11672.07	-4249.87	1695567.82	14320152.23	39°26'3.7621"N	80°48'16.8287"W	12421.70	339.993	0.93	-0.23	-0.90	
18957.00	89.940	337.480	6421.09	12508.27	11761.06	-4283.06	1695534.64	14320241.18	39°26'4.6424"N	80°48'17.2493"W	12516.68	339.990	4.35	-0.09	-4.35	
19051.00	90.280	338.030	6420.91	12602.00	11848.07	-4318.64	1695499.07	14320328.15	39°26'5.5030"N	80°48'17.7004"W	12610.60	339.973	0.69	0.36	0.59	
19146.00	90.340	342.930	6420.39	12696.93	11937.58	-4350.38	1695467.35	14320417.63	39°26'6.3884"N	80°48'18.1024"W	12705.57	339.977	5.16	0.06	5.16	
19240.00	90.490	346.000	6419.71	12790.84	12028.13	-4375.55	1695442.18	14320508.14	39°26'7.2839"N	80°48'18.4207"W	12799.27	340.010	3.27	0.16	3.27	
19335.00	90.250	344.430	6419.10	12885.69	12119.98	-4399.79	1695417.95	14320599.96	39°26'8.1922"N	80°48'18.7272"W	12893.88	340.048	1.67	-0.25	-1.65	
19430.00	90.620	344.050	6418.38	12980.62	12211.41	-4425.59	1695392.16	14320691.35	39°26'9.0963"N	80°48'19.0535"W	12988.62	340.079	0.56	0.39	-0.40	
19438.00	90.400	343.810	6418.31	12988.62	12219.09	-4427.81	1695389.95	14320699.03	39°26'9.1724"N	80°48'19.0815"W	12996.60	340.081	4.07	-2.75	-3.00	
19462.00‡	90.400	343.810	6418.14	13012.60	12242.14	-4434.50	1695383.26	14320722.07	39°26'9.4003"N	80°48'19.1662"W	13020.55	340.088	0.00	0.00	0.00	Projected MD at TD: 19462' MD



Actual Wellpath Report

Rockies Unit 2H AWP Proj: 19462'
Page 10 of 12



REFERENCE WELLPATH IDENTIFICATION			
Operator	ANTERO RESOURCES CORPORATION	Well	Rockies Unit 2H
Field	Tyler	API	47-095-02659-0000
Facility	Colorado West Pad	Wellbore	Rockies Unit 2H AWB
Slot	Slot #04		

HOLE & CASING SECTIONS - Ref Wellbore: Rockies Unit 2H AWB Ref Wellpath: Rockies Unit 2H AWP Proj: 19462'									
String/Diameter	Start MD [ft]	End MD [ft]	Interval [ft]	Start TVD [ft]	End TVD [ft]	Start N/S [ft]	Start E/W [ft]	End N/S [ft]	End E/W [ft]
20in Conductor	25.00	105.00	80.00	25.00	105.00	0.00	0.00	0.12	-0.13
17.5in Open Hole	105.00	440.90	335.90	105.00	440.90	0.12	-0.13	-0.45	-0.88
13.375in Casing Surface	25.00	440.90	415.90	25.00	440.90	0.00	0.00	-0.45	-0.88
12.25in Open Hole	440.90	3060.00	2619.10	440.90	3057.95	-0.45	-0.88	-57.55	-15.73
9.625in Casing Intermediate	25.00	3060.00	3035.00	25.00	3057.95	0.00	0.00	-57.55	-15.73
8.75in Open Hole	3060.00	6113.00	3053.00	3057.95	6045.59	-57.55	-15.73	-296.44	-361.11
8.5in Open Hole	6113.00	19462.00	13349.00	6045.59	6418.14	-296.44	-361.11	12242.14	-4434.50
5.5in Casing Production	25.00	19462.00	19437.00	25.00	6418.14	0.00	0.00	12242.14	-4434.50

TARGETS								
Name	TVD [ft]	North [ft]	East [ft]	Grid East [US ft]	Grid North [US ft]	Latitude	Longitude	Shape
Rockies Unit 2H - POE - Rev-2	6377.00	106.11	-504.67	1699311.52	14308590.87	39°24'9.3673"N	80°47'29.4378"W	point
Rockies Unit 2H - BHL - Rev-2	6403.00	12287.56	-4441.66	1695376.10	14320767.47	39°26'9.8494"N	80°48'19.2561"W	point
Rockies Unit 2H - LP - Rev-2	6403.00	288.07	-563.48	1699252.74	14308772.75	39°24'11.1670"N	80°47'30.1816"W	point
Rockies Unit 2H - 50' L/R Hardline	6450.00	6196.84	-2473.16	1697343.81	14314679.17	39°25'9.6092"N	80°47'54.3410"W	rectangle
2D Rectangle 12804.2 x 100.								



Actual Wellpath Report

Rockies Unit 2H AWP Proj: 19462'

Page 11 of 12



REFERENCE WELLPATH IDENTIFICATION			
Operator	ANTERO RESOURCES CORPORATION	Well	Rockies Unit 2H
Field	Tyler	API	47-095-02659-0000
Facility	Colorado West Pad	Wellbore	Rockies Unit 2H AWB
Slot	Slot #04		

WELLPATH COMPOSITION - Ref Wellbore: Rockies Unit 2H AWB Ref Wellpath: Rockies Unit 2H AWP Proj: 19462'					
Start MD [ft]	End MD [ft]	Positional Uncertainty Model	Log Name/Comment	Wellbore	Survey Date
25.00	454.00	Gyrodatta 2015 - GC+WIR+DPIPE	01 Gyrodatta MS Gyro <17-1/2">(100'-444')	Rockies Unit 2H AWB	1/30/2020
454.00	2994.00	OWSG MWD rev2 + HRGM	02 Premier MWD <12-1/4">(444')(555'-2984')	Rockies Unit 2H AWB	1/30/2020
2994.00	6046.00	BH NaviTrak (2019) (Axial)	03 APS EM <8-3/4"> (2994')(3107'-6046')	Rockies Unit 2H AWB	3/18/2020
6046.00	19462.00	BH AutoTrak Curve (2019) (Short spacing)	04 BH AT Curve <8-1/2"> (6046')(6092'-19438')	Rockies Unit 2H AWB	3/18/2020



Actual Wellpath Report

Rockies Unit 2H AWP Proj: 19462'

Page 12 of 12



REFERENCE WELLPATH IDENTIFICATION			
Operator	ANTERO RESOURCES CORPORATION	Well	Rockies Unit 2H
Field	Tyler	API	47-095-02659-0000
Facility	Colorado West Pad	Wellbore	Rockies Unit 2H AWB
Slot	Slot #04		

COMMENTS
<p>Wellpath general comments API: 47-095-02659-0000 BHI Job #: 110333730A Rig: Patterson 342 Duration: 03/20/2020-03/23/2020 Gyrodax MS Gyro <17-1/2">(100'-444') Premier MWD <12-1/4">(444')(555'-2984') APS EM <8-3/4"> (2994')(3107'-6046') BH AT Curve <8-1/2"> (6046')(6092'-19438') Middlesex: 6272' MD Burkett: 6509' MD Tully: 6585' MD Hamilton: 6690' MD Marcellus POE: 6727' MD Projected MD at TD: 19462' MD</p>



Actual Wellpath Report

Rockies Unit 2H AWP Proj: 19462'

Page 12 of 12



REFERENCE WELLPATH IDENTIFICATION			
Operator	ANTERO RESOURCES CORPORATION	Well	Rockies Unit 2H
Field	Tyler	API	47-095-02659-0000
Facility	Colorado West Pad	Wellbore	Rockies Unit 2H AWB
Slot	Slot #04		

COMMENTS
<p>Wellpath general comments API: 47-095-02659-0000 BHI Job #: 110333730A Rig: Patterson 342 Duration: 03/20/2020-03/23/2020 Gyrodata MS Gyro <17-1/2">(100'-444') Premier MWD <12-1/4">(444')(555'-2984') APS EM <8-3/4"> (2994')(3107'-6046') BH AT Curve <8-1/2"> (6046')(6092'-19438') Middlesex: 6272' MD Burkett: 6509' MD Tully: 6585' MD Hamilton: 6690' MD Marcellus POE: 6727' MD Projected MD at TD: 19462' MD</p>