

**Antero Resources**  
**Well No. Richmond 2H**

Antero Resources Corporation



**Well Location References (NTS)**



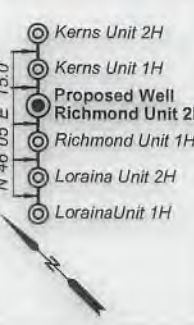
Top Hole  
7.5' Spot

TOP HOLE LATITUDE 39 - 30 - 00  
BTM HOLE LATITUDE 39 - 32 - 30

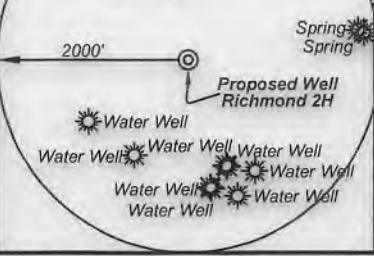
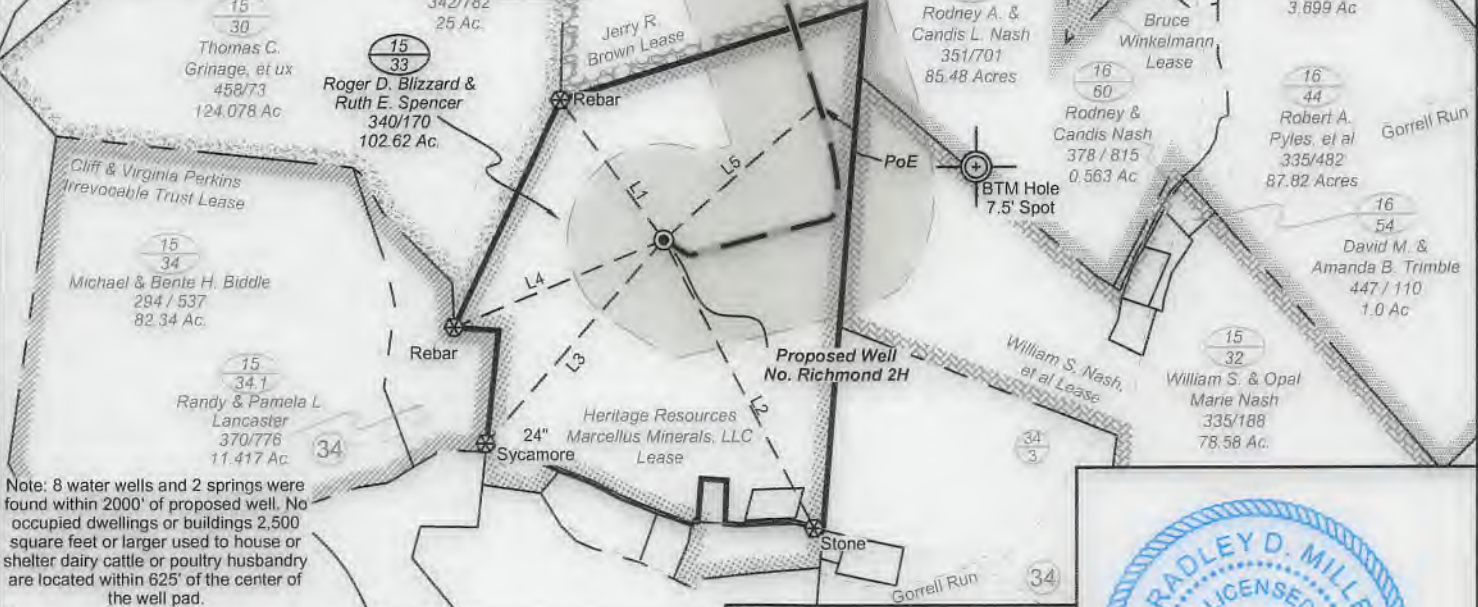
**Notes**  
West Virginia Coordinate System of 1927, North Zone based upon Differential GPS Measurements. Well No. Richmond Unit 2H Top Hole coordinates are N: 366,711.19' Longitude: 80°5'01.88" E: 1,618,908.80' Bottom Hole coordinates are N: 370,383.42' Longitude: 80°51'04.56" E: 1,618,753.78' UTM Zone 17, NAD 1983  
Top Hole Coordinates N: 4,372,169.946m E: 512,866.877m Bottom Hole Coordinates N: 4,373,287.926m E: 512,801.007m  
Plat orientation and corner and well references are based upon the grid north meridian. Well location references are based upon the magnetic meridian.

**Notes:**  
Well No. Richmond Unit 2H UTM Zone 17, NAD 1927  
Top Hole Coordinates N: 14,343,646.43' E: 1,682,583.35'  
Point of Entry Coordinates N: 14,344,366.04' E: 1,683,382.26'  
Bottom Hole Coordinates N: 14,347,314.31' E: 1,682,367.13'

**Wellhead Layout (NTS)**



Bearing	Dist.
L1 S 36°35' E	903.4'
L2 N 27°42' W	1,686.4'
L3 N 41°22' E	1,406.5'
L4 N 67°27' E	1,184.4'
L5 N 48°57' E	1,075.6'



- Legend**
- Proposed gas well
  - ⊗ Monument, as noted
  - ☀ Existing Well, as noted
  - Creek or Drain
  - Road
  - Surface boundary (approx.)
  - Interior surface tracts (approx.)
  - District Line

I, the undersigned, hereby certify that this plat is correct to the best of my knowledge and belief and shows all the information required by law and the rules issued and prescribed by the Department of Environmental Protection.

*Bradley D. Miller*  
Bradley D. Miller, P.S. 2167



SEAL

FILE NO: 49-54-E-19  
DRAWING NO: Richmond 2H Well Plat  
SCALE: 1" = 1000'  
MINIMUM DEGREE OF ACCURACY: Submeter  
PROVEN SOURCE OF ELEVATION: WVDOT, Harrisville, WV

**STATE OF WEST VIRGINIA**  
**DEPARTMENT OF ENVIRONMENTAL PROTECTION**  
**OIL AND GAS DIVISION**

DATE: January 27 2020  
OPERATOR'S WELL NO. Richmond 2H  
API WELL NO  
47 - 095 - 02691  
STATE COUNTY PERMIT

WELL TYPE:  OIL  GAS  LIQUID INJECTION  WASTE DISPOSAL  
(IF GAS) PRODUCTION:  STORAGE  DEEP  SHALLOW  
LOCATION: ELEVATION: As-Built 1,004' WATERSHED: Outlet Middle Island Creek QUADRANGLE: Shirley; Porter Falls  
DISTRICT: Ellsworth COUNTY: Tyler  
SURFACE OWNER: Roger D. Blizzard & Ruth E. Spencer ACREAGE: 102.62  
ROYALTY OWNER: Heritage Resources Marcellus Minerals, LLC; Jerry R. Brown; LEASE NO: ACREAGE: 101.38; 90.168  
PROPOSED WORK:  DRILL  CONVERT  DRILL DEEPER  FRACTURE OR STIMULATE  PLUG OFF OLD FORMATION  
 PERFORATE NEW FORMATION  OTHER PHYSICAL CHANGE IN WELL (SPECIFY)  
 PLUG AND ABANDON  CLEAN OUT AND REPLUG TARGET FORMATION: Marcellus Shale ESTIMATED DEPTH: 11,600' MD 7,000' TVD

WELL OPERATOR: Antero Resources Corporation DESIGNATED AGENT: Dianna Stamper - CT Corporation System  
ADDRESS: 1615 Wynkoop Street ADDRESS: 5400 D Big Tyler Road  
Denver, CO 80202 Charleston, WV 25313