



# ANTERO RESOURCES CORPORATION



Location: Tyler County, WV  
 Field: Tyler  
 Facility: Margery Pad

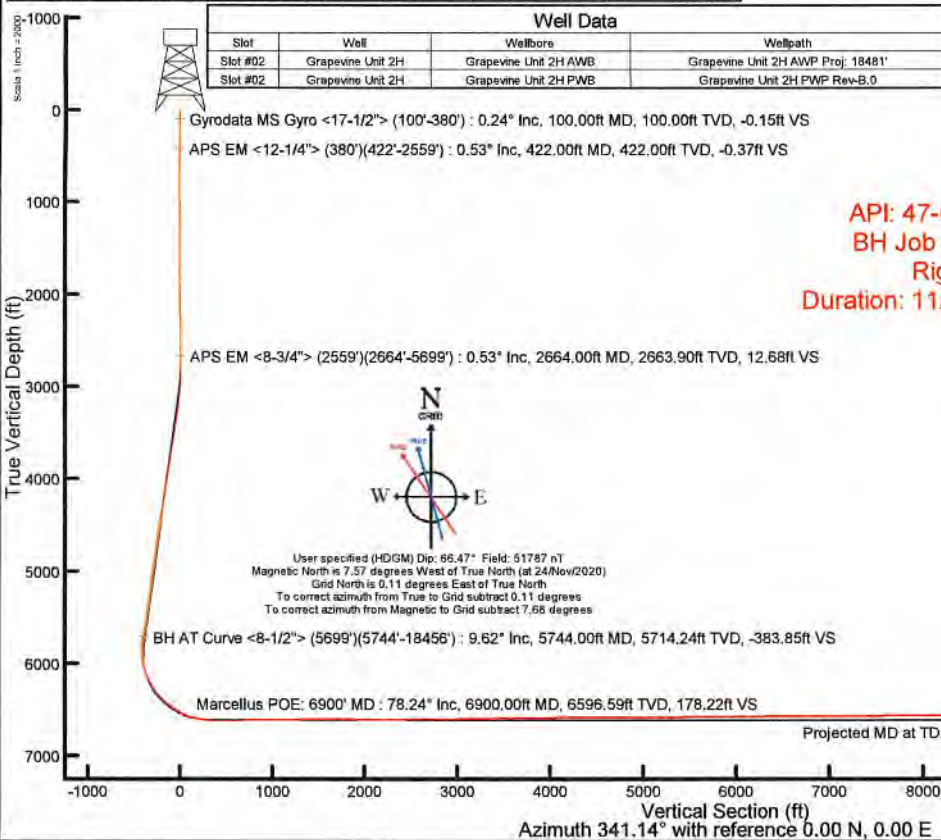
Slot: Slot #02  
 Well: Grapevine Unit 2H  
 Wellbore: Grapevine Unit 2H PWB

Plot reference wellpath is Grapevine Unit 2H PWP Rev-B.0	Grid System: NAD27 / UTM Zone 17 North, US feet
True vertical depths are referenced to H&P 317 (RKB)	North Reference: Grid north
Reference wellpaths measured depths are referenced to H&P 317 (RKB)	Scale: True distance
H&P 317 (RKB) to Mean Sea Level: 1066.5 feet	Coordinates are in feet referenced to Slot
Mean Sea Level to Ground level (At Slot: Slot #02): -1041 feet	Depths are in feet
Other wellpath MDs are referenced to each path's default MD datum	Created by: edzanyar on 2020-12-07; Database: WA_MPL_EASTERNUS_Data

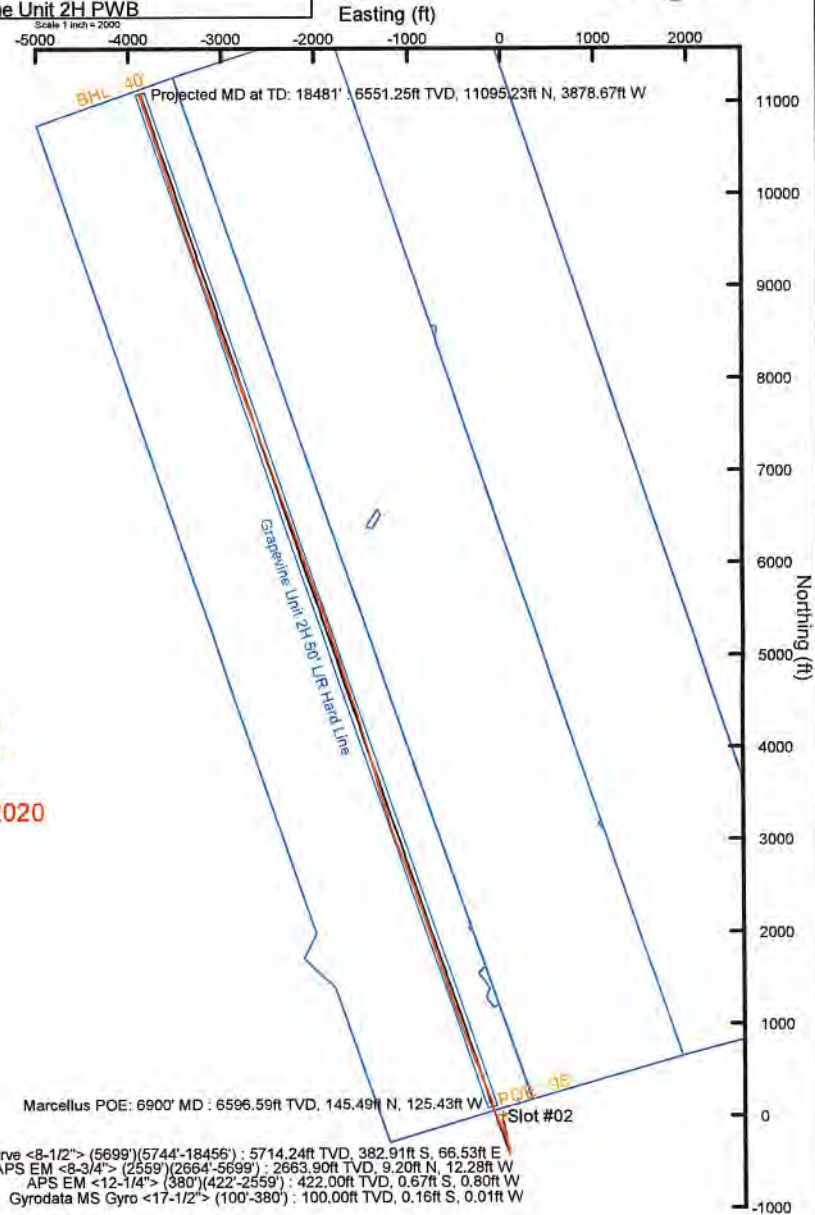
Location Information				
Facility Name	Grid East (US ft)	Grid North (US ft)	Latitude	Longitude
Margery Pad	1688470.750	14350316.150	39°31'2.1450"N	80°49'46.5880"W
Slot	Local N (ft)	Local E (ft)	Grid East (US ft)	Grid North (US ft)
Slot #02	-30.56	-51.66	1688419.110	14350285.600
Comment	Grapevine Unit 2H			
H&P 317 (RKB) to Ground level (At Slot: Slot #02)	25.5ft			
Mean Sea Level to Ground level (At Slot: Slot #02)	-1041ft			
H&P 317 (RKB) to Mean Sea Level	1066.5ft			

Well Profile Data								
Design Comment	MD (ft)	Inc (")	Az (°)	TVD (ft)	Local N (ft)	Local E (ft)	DLS (°/100ft)	VS (ft)
Tie On	2559.00	0.790	261.200	2558.91	8.87	-11.36	1.05	12.07
Proj. to Bottom	2634.00	0.790	261.200	2633.90	8.71	-12.38	0.00	12.25
Drill Out / KOP 1	2722.00	0.790	261.200	2721.89	8.53	-13.58	0.00	12.46
End of 3D Arc	3125.78	8.000	168.509	3124.35	-19.48	-10.73	2.00	-14.97
Curve KOP	5825.72	8.000	168.509	5798.02	-387.71	64.13	0.00	-387.62
POE	6860.13	74.817	341.144	6588.00	102.44	-115.16	8.00	134.17
Landing Pt.	7049.92	90.000	341.144	6613.00	279.95	-175.78	8.00	321.74
BHL	16475.21	90.000	341.144	11092.12	-3968.24	0.00	0.00	11747.03

Well Data			
Slot	Well	Wellbore	Wellpath
Slot #02	Grapevine Unit 2H	Grapevine Unit 2H AWB	Grapevine Unit 2H AWP Proj: 18481'
Slot #02	Grapevine Unit 2H	Grapevine Unit 2H PWB	Grapevine Unit 2H PWP Rev-B.0



API: 47-095-02708-0000  
 BH Job #: 110631537-B  
 Rig: H&P 317  
 Duration: 11/26/2020-11/30/2020



User specified (HDGM) Dip: 66.47° Field: 51787 nT  
 Magnetic North is 7.57 degrees West of True North (at 24/Nov/2020)  
 Grid North is 0.11 degrees East of True North  
 To correct azimuth from True to Grid subtract 0.11 degrees  
 To correct azimuth from Magnetic to Grid subtract 7.68 degrees

BH AT Curve <8-1/2°> (5699')(5744'-18456') : 5714.24ft TVD, 382.91ft S, 66.53ft E  
 APS EM <8-3/4°> (2559')(2664'-5699') : 2663.90ft TVD, 9.20ft N, 12.28ft W  
 APS EM <12-1/4°> (380')(422'-2559') : 422.00ft TVD, 0.67ft S, 0.80ft W  
 Gyrodata MS Gyro <17-1/2°> (100'-380') : 100.00ft TVD, 0.16ft S, 0.01ft W



# Actual Wellpath Report

Grapevine Unit 2H AWP Proj: 18481'  
Page 1 of 11



REFERENCE WELLPATH IDENTIFICATION			
Operator	ANTERO RESOURCES CORPORATION	Well	Grapevine Unit 2H
Field	Tyler	API	47-095-02708-0000
Facility	Margery Pad	Wellbore	Grapevine Unit 2H AWB
Slot	Slot #02		

REPORT SETUP INFORMATION			
Projection System	NAD27 / UTM Zone 17 North, US feet	Software System	WellArchitect® 6.0
North Reference	Grid	User	Edsaryar
Scale	0.999603	Report Generated	01/Dec/2020 at 14:51
Convergence at slot	0.11° East	Database	WA_MPL_EASTERNUS_Defn

WELLPATH LOCATION						
	Local coordinates		Grid coordinates		Geographic coordinates	
	North[ft]	East[ft]	Easting[US ft]	Northing[US ft]	Latitude	Longitude
Slot Location	-30.56	-51.66	1688419.11	14350285.60	39°31'1.8440"N	80°49'47.2480"W
Facility Reference Pt			1688470.75	14350316.15	39°31'2.1450"N	80°49'46.5880"W
Field Reference Pt			0.00	0.00	0°00'0.0000"	85°29'19.3013"W

WELLPATH DATUM			
Calculation method	Minimum curvature	H&P 317 (RKB) to Facility Vertical Datum	1066.50ft
Horizontal Reference Pt	Slot	H&P 317 (RKB) to Mean Sea Level	1066.50ft
Vertical Reference Pt	H&P 317 (RKB)	H&P 317 (RKB) to Ground Level at Slot (Slot #02)	25.50ft
MD Reference Pt	H&P 317 (RKB)	Section Origin	N 0.00, E 0.00 ft
Field Vertical Reference	Mean Sea Level	Section Azimuth	341.14°



# Actual Wellpath Report

Grapevine Unit 2H AWP Proj: 18481'  
Page 2 of 11



REFERENCE WELLPATH IDENTIFICATION			
Operator	ANTERO RESOURCES CORPORATION	Well	Grapevine Unit 2H
Field	Tyler	API	47-095-02708-0000
Facility	Margery Pad	Wellbore	Grapevine Unit 2H AWB
Slot	Slot #02		

WELLPATH DATA (207 stations) † = interpolated, ‡ = extrapolated station																
MD	Inclination	Azimuth	TVD	Vert Sect	North	East	Grid East	Grid North	Latitude	Longitude	Closure Dist	Closure Dir	DLS	Build Rate	Turn Rate	Comments
(ft)	(°)	(°)	(ft)	(ft)	(ft)	(ft)	(US ft)	(US ft)			(ft)	(°)	(°/100ft)	(°/100ft)	(°/100ft)	
0.00	0.00	182.740	0.00	0.00	0.00	0.00	1688419.11	14350285.60	39°31'1.8440"N	80°49'47.2480"W	0.00	0.000	0.00	0.00	0.00	
25.50	0.000	182.740	25.50	0.00	0.00	0.00	1688419.11	14350285.60	39°31'1.8440"N	80°49'47.2480"W	0.00	0.000	0.00	0.00	0.00	
100.00	0.240	182.740	100.00	-0.15	-0.16	-0.01	1688419.10	14350285.44	39°31'1.8424"N	80°49'47.2481"W	0.16	182.740	0.32	0.32	0.00	Gyrodata MS Gyro <17-1/2"> (100'-380')
200.00	0.120	195.330	200.00	-0.43	-0.47	-0.05	1688419.06	14350285.13	39°31'1.8393"N	80°49'47.2486"W	0.47	185.534	0.13	-0.12	12.59	
300.00	0.170	252.550	300.00	-0.51	-0.61	-0.21	1688418.90	14350284.99	39°31'1.8379"N	80°49'47.2507"W	0.65	199.318	0.15	0.05	57.22	
380.00	0.260	272.860	380.00	-0.44	-0.64	-0.51	1688418.60	14350284.96	39°31'1.8377"N	80°49'47.2545"W	0.82	218.574	0.15	0.11	25.39	
422.00	0.530	259.910	422.00	-0.37	-0.67	-0.80	1688418.32	14350284.93	39°31'1.8374"N	80°49'47.2581"W	1.04	230.000	0.67	0.64	-30.83	APS EM <12-1/4"> (380')(422'-2559')
513.00	0.580	257.970	512.99	-0.26	-0.84	-1.66	1688417.45	14350284.76	39°31'1.8357"N	80°49'47.2692"W	1.86	243.242	0.06	0.05	-2.13	
604.00	0.530	293.670	603.99	0.08	-0.76	-2.50	1688416.61	14350284.84	39°31'1.8364"N	80°49'47.2798"W	2.61	252.980	0.38	-0.05	39.23	
693.00	0.630	311.050	692.98	0.79	-0.28	-3.24	1688415.87	14350285.32	39°31'1.8413"N	80°49'47.2893"W	3.25	265.108	0.23	0.11	19.53	
783.00	0.700	308.190	782.98	1.67	0.39	-4.05	1688415.06	14350285.99	39°31'1.8479"N	80°49'47.2996"W	4.07	275.467	0.09	0.08	-3.18	
874.00	0.570	316.400	873.97	2.55	1.06	-4.80	1688414.32	14350286.66	39°31'1.8545"N	80°49'47.3091"W	4.91	282.448	0.17	-0.14	9.02	
965.00	0.940	323.230	964.96	3.67	1.98	-5.56	1688413.56	14350287.58	39°31'1.8637"N	80°49'47.3188"W	5.90	289.658	0.42	0.41	7.51	
1055.00	0.870	296.640	1054.95	4.86	2.88	-6.61	1688412.50	14350288.48	39°31'1.8726"N	80°49'47.3322"W	7.21	293.566	0.47	-0.08	-29.54	
1150.00	0.740	296.220	1149.94	5.81	3.48	-7.80	1688411.31	14350289.08	39°31'1.8785"N	80°49'47.3474"W	8.54	294.016	0.14	-0.14	-0.44	
1244.00	0.550	262.390	1243.94	6.33	3.69	-8.79	1688410.32	14350289.28	39°31'1.8805"N	80°49'47.3601"W	9.54	292.734	0.44	-0.20	-35.99	
1339.00	0.580	295.530	1338.93	6.76	3.83	-9.68	1688409.43	14350289.43	39°31'1.8820"N	80°49'47.3714"W	10.41	291.596	0.34	0.03	34.88	
1434.00	0.480	283.470	1433.93	7.30	4.13	-10.50	1688408.61	14350289.73	39°31'1.8850"N	80°49'47.3819"W	11.29	291.478	0.16	-0.11	-12.69	
1529.00	0.370	340.650	1528.93	7.82	4.51	-10.99	1688408.12	14350290.11	39°31'1.8888"N	80°49'47.3881"W	11.88	292.330	0.44	-0.12	60.19	
1624.00	0.570	307.940	1623.93	8.53	5.09	-11.46	1688407.65	14350290.69	39°31'1.8945"N	80°49'47.3941"W	12.55	293.957	0.34	0.21	-34.43	
1718.00	0.330	13.190	1717.92	9.15	5.65	-11.77	1688407.34	14350291.24	39°31'1.9000"N	80°49'47.3980"W	13.05	295.620	0.56	-0.26	69.41	
1813.00	0.100	261.040	1812.92	9.39	5.90	-11.79	1688407.32	14350291.50	39°31'1.9025"N	80°49'47.3983"W	13.18	296.577	0.40	-0.24	-118.05	
1908.00	0.170	11.740	1907.92	9.53	6.02	-11.84	1688407.27	14350291.62	39°31'1.9037"N	80°49'47.3989"W	13.29	296.957	0.24	0.07	116.53	
2003.00	0.150	39.150	2002.92	9.72	6.26	-11.74	1688407.38	14350291.86	39°31'1.9060"N	80°49'47.3976"W	13.30	298.066	0.08	-0.02	28.85	
2098.00	0.370	13.550	2097.92	10.04	6.65	-11.59	1688407.53	14350292.25	39°31'1.9099"N	80°49'47.3956"W	13.36	299.863	0.26	0.23	-26.95	
2193.00	0.720	56.290	2192.92	10.45	7.28	-11.02	1688408.10	14350292.88	39°31'1.9161"N	80°49'47.3884"W	13.21	303.461	0.54	0.37	44.99	
2287.00	0.440	357.710	2286.91	10.95	7.97	-10.54	1688408.57	14350293.57	39°31'1.9229"N	80°49'47.3823"W	13.22	307.094	0.66	-0.30	-62.32	
2382.00	0.360	326.150	2381.91	11.59	8.58	-10.72	1688408.39	14350294.18	39°31'1.9290"N	80°49'47.3846"W	13.73	308.677	0.24	-0.08	-33.22	
2477.00	0.100	34.780	2476.91	11.93	8.90	-10.84	1688408.27	14350294.50	39°31'1.9321"N	80°49'47.3861"W	14.03	309.381	0.35	-0.27	72.24	
2559.00	0.790	261.200	2558.91	12.07	8.87	-11.36	1688407.76	14350294.47	39°31'1.9318"N	80°49'47.3927"W	14.41	307.989	1.05	0.84	-162.90	



# Actual Wellpath Report

Grapevine Unit 2H AWP Proj: 18481'  
Page 3 of 11



REFERENCE WELLPATH IDENTIFICATION				
Operator	ANTERO RESOURCES CORPORATION		Well	Grapevine Unit 2H
Field	Tyler		API	47-095-02708-0000
Facility	Margery Pad		Wellbore	Grapevine Unit 2H AWB
Slot	Slot #02			

WELLPATH DATA (207 stations)																
MD (ft)	Inclination (°)	Azimuth (°)	TVD (ft)	Vert Sect (ft)	North (ft)	East (ft)	Grid East (US ft)	Grid North (US ft)	Latitude	Longitude	Closure Dist (ft)	Closure Dir (°)	DLS (°/100ft)	Build Rate (°/100ft)	Turn Rate (°/100ft)	Comments
2664.00	0.530	334.280	2663.90	12.68	9.20	-12.28	1688406.83	14350294.79	39°31'1.9351"N	80°49'47.4045"W	15.35	306.823	0.77	-0.25	69.60	APS EM <8-3/4"> (2559')(2664'-5699')
2759.00	0.740	319.620	2758.90	13.68	10.06	-12.87	1688406.24	14350295.66	39°31'1.9436"N	80°49'47.4120"W	16.34	308.010	0.28	0.22	-15.43	
2854.00	0.700	305.020	2853.89	14.72	10.86	-13.75	1688405.37	14350296.46	39°31'1.9516"N	80°49'47.4231"W	17.52	308.315	0.20	-0.04	-15.37	
2948.00	2.440	182.880	2947.86	13.33	9.19	-14.32	1688404.80	14350294.79	39°31'1.9351"N	80°49'47.4304"W	17.01	302.703	3.06	1.85	-129.94	
3043.00	5.740	181.990	3042.61	7.01	2.42	-14.58	1688404.53	14350288.02	39°31'1.8682"N	80°49'47.4340"W	14.78	279.433	3.47	3.47	-0.94	
3141.00	7.760	174.750	3139.92	-4.00	-9.06	-14.15	1688404.97	14350276.54	39°31'1.7546"N	80°49'47.4287"W	16.80	237.352	2.23	2.06	-7.39	
3236.00	8.350	176.590	3233.99	-16.89	-22.34	-13.15	1688405.96	14350263.27	39°31'1.6234"N	80°49'47.4163"W	25.92	210.487	0.68	0.62	1.94	
3330.00	7.880	173.620	3327.05	-29.76	-35.55	-12.03	1688407.09	14350250.06	39°31'1.4928"N	80°49'47.4023"W	37.53	198.692	0.67	-0.50	-3.16	
3425.00	8.290	172.830	3421.10	-42.82	-48.82	-10.45	1688408.66	14350236.80	39°31'1.3616"N	80°49'47.3825"W	49.93	192.082	0.45	0.43	-0.83	
3520.00	10.050	176.320	3514.88	-57.53	-63.89	-9.06	1688410.05	14350221.74	39°31'1.2127"N	80°49'47.3652"W	64.53	188.074	1.94	1.85	3.67	
3615.00	9.450	169.300	3608.52	-73.25	-79.83	-7.08	1688412.03	14350205.81	39°31'1.0551"N	80°49'47.3403"W	80.14	185.071	1.40	-0.63	-7.39	
3710.00	8.830	163.610	3702.31	-88.26	-94.48	-3.58	1688415.53	14350191.15	39°31'0.9102"N	80°49'47.2959"W	94.55	182.168	1.15	-0.65	-5.99	
3804.00	8.570	169.480	3795.23	-102.39	-108.29	-0.26	1688418.85	14350177.35	39°31'0.7737"N	80°49'47.2539"W	108.29	180.139	0.98	-0.28	6.24	
3899.00	8.120	163.880	3889.23	-116.10	-121.70	2.89	1688422.00	14350163.95	39°31'0.6411"N	80°49'47.2140"W	121.73	178.639	0.98	-0.47	-5.89	
3994.00	8.760	169.350	3983.20	-129.96	-135.25	6.09	1688425.20	14350150.40	39°31'0.5071"N	80°49'47.1735"W	135.39	177.421	1.08	0.67	5.76	
4089.00	8.630	163.770	4077.11	-144.24	-149.21	9.42	1688428.53	14350136.45	39°31'0.3691"N	80°49'47.1314"W	149.50	176.387	0.90	-0.14	-5.87	
4184.00	7.960	167.820	4171.11	-157.89	-162.48	12.80	1688431.91	14350123.19	39°31'0.2379"N	80°49'47.0885"W	162.98	175.495	0.94	-0.71	4.26	
4279.00	9.280	172.550	4265.04	-171.94	-176.51	15.18	1688434.29	14350109.16	39°31'0.0992"N	80°49'47.0585"W	177.16	175.084	1.58	1.39	4.98	
4373.00	9.430	167.860	4357.79	-187.01	-191.55	17.78	1688436.89	14350094.13	39°30'59.9505"N	80°49'47.0257"W	192.37	174.696	0.83	0.16	-4.99	
4468.00	8.810	156.450	4451.60	-202.00	-205.83	22.33	1688441.43	14350079.85	39°30'59.8093"N	80°49'46.9680"W	207.04	173.809	2.01	-0.65	-12.01	
4563.00	9.320	162.440	4545.41	-216.94	-219.83	27.56	1688446.65	14350065.86	39°30'59.6708"N	80°49'46.9017"W	221.55	172.855	1.13	0.54	6.31	
4658.00	8.880	168.770	4639.22	-231.90	-234.36	31.30	1688450.40	14350051.34	39°30'59.5271"N	80°49'46.8542"W	236.44	172.392	1.15	-0.46	6.66	
4753.00	8.400	164.760	4733.14	-246.09	-248.25	34.56	1688453.65	14350037.45	39°30'59.3898"N	80°49'46.8130"W	250.64	172.075	0.81	-0.51	-4.22	
4848.00	8.270	167.050	4827.14	-259.81	-261.60	37.91	1688457.01	14350024.11	39°30'59.2578"N	80°49'46.7705"W	264.33	171.754	0.38	-0.14	2.41	
4943.00	8.570	179.000	4921.12	-273.34	-275.34	39.57	1688458.66	14350010.37	39°30'59.1220"N	80°49'46.7497"W	278.16	171.822	1.87	0.32	12.58	
5037.00	7.690	174.280	5014.18	-286.13	-288.60	40.32	1688459.41	14349997.12	39°30'58.9909"N	80°49'46.7405"W	291.40	172.047	1.17	-0.94	-5.02	
5132.00	7.900	163.730	5108.30	-298.85	-301.19	42.78	1688461.87	14349984.53	39°30'58.8664"N	80°49'46.7094"W	304.21	171.916	1.52	0.22	-11.11	
5227.00	7.480	155.040	5202.45	-311.52	-313.06	47.22	1688466.31	14349972.66	39°30'58.7490"N	80°49'46.6530"W	316.60	171.423	1.30	-0.44	-9.15	
5322.00	7.460	159.770	5296.65	-323.83	-324.46	51.96	1688471.05	14349961.27	39°30'58.6363"N	80°49'46.5928"W	328.59	170.902	0.65	-0.02	4.98	
5417.00	8.540	176.380	5390.73	-336.81	-337.28	54.54	1688473.63	14349948.45	39°30'58.5094"N	80°49'46.5602"W	341.66	170.815	2.67	1.14	17.48	



# Actual Wellpath Report

Grapevine Unit 2H AWP Proj: 18481'  
Page 4 of 11



REFERENCE WELLPATH IDENTIFICATION			
Operator	ANTERO RESOURCES CORPORATION	Well	Grapevine Unit 2H
Field	Tyler	API	47-095-02708-0000
Facility	Margery Pad	Wellbore	Grapevine Unit 2H AWB
Slot	Slot #02		

WELLPATH DATA (207 stations) † = interpolated, ‡ = extrapolated station																
MD [ft]	Inclination [°]	Azimuth [°]	TVD [ft]	Vert Sect [ft]	North [ft]	East [ft]	Grid East [US ft]	Grid North [US ft]	Latitude	Longitude	Closure Dist [ft]	Closure Dir [°]	DLS [°/100ft]	Build Rate [°/100ft]	Turn Rate [°/100ft]	Comments
5512.00	8.200	173.680	5484.72	-350.22	-351.06	55.73	1688474.82	14349934.68	39°30'58.3733"N	80°49'46.5454"W	355.45	170.980	0.55	-0.36	-2.84	
5606.00	7.770	161.540	5577.82	-363.12	-363.75	58.48	1688477.57	14349922.00	39°30'58.2478"N	80°49'46.5106"W	368.42	170.867	1.85	-0.46	-12.91	
5699.00	8.970	155.610	5669.83	-376.63	-376.32	63.46	1688482.55	14349909.43	39°30'58.1235"N	80°49'46.4473"W	381.63	170.427	1.59	1.29	-6.38	
5744.00	9.620	154.590	5714.24	-383.85	-382.91	66.53	1688485.61	14349902.85	39°30'58.0583"N	80°49'46.4084"W	388.64	170.144	1.49	1.44	-2.27	BH AT Curve <8-1/2"> (5699')(5744'-18456')
5808.00	6.740	146.470	5777.58	-392.80	-390.87	70.90	1688489.98	14349894.89	39°30'57.9795"N	80°49'46.3528"W	397.25	169.719	4.84	-4.50	-12.69	
5903.00	0.070	295.700	5872.36	-398.16	-395.50	73.93	1688493.01	14349890.26	39°30'57.9337"N	80°49'46.3142"W	402.35	169.412	7.16	-7.02	157.08	
5997.00	6.540	343.140	5966.16	-392.77	-390.34	72.32	1688491.40	14349895.41	39°30'57.9847"N	80°49'46.3346"W	396.99	169.504	6.91	6.88	50.47	
6092.00	15.490	347.150	6059.31	-374.71	-372.76	67.92	1688487.00	14349912.99	39°30'58.1586"N	80°49'46.3903"W	378.90	169.673	9.45	9.42	4.22	
6187.00	22.940	345.420	6148.96	-343.58	-342.43	60.43	1688479.51	14349943.30	39°30'58.4584"N	80°49'46.4852"W	347.72	169.992	7.86	7.84	-1.82	
6282.00	29.410	337.840	6234.20	-301.78	-302.86	46.95	1688466.04	14349982.86	39°30'58.8498"N	80°49'46.6562"W	306.48	171.188	7.65	6.81	-7.98	
6372.00†	36.973	335.755	6309.46	-252.70	-257.65	27.47	1688446.57	14350028.05	39°30'59.2970"N	80°49'46.9036"W	259.11	173.913	8.50	8.40	-2.32	Sycamore: 6372' MD
6376.00	37.310	335.680	6312.65	-250.29	-255.45	26.48	1688445.58	14350030.25	39°30'59.3188"N	80°49'46.9162"W	256.82	174.082	8.50	8.42	-1.88	
6471.00	45.480	337.640	6383.86	-187.72	-197.79	1.70	1688420.81	14350087.89	39°30'59.8891"N	80°49'47.2311"W	197.80	179.509	8.71	8.60	2.06	
6525.00†	49.786	338.582	6420.24	-147.89	-160.78	-13.16	1688405.95	14350124.89	39°31'0.2552"N	80°49'47.4198"W	161.31	184.681	8.08	7.97	1.74	Middlesex: 6525' MD
6566.00	53.060	339.220	6445.80	-115.86	-130.87	-24.70	1688394.42	14350154.78	39°31'0.5509"N	80°49'47.5662"W	133.18	190.686	8.08	7.99	1.56	
6661.00	54.420	339.660	6501.99	-39.30	-59.15	-51.59	1688367.54	14350226.47	39°31'1.2603"N	80°49'47.9077"W	78.49	221.096	1.48	1.43	0.46	
6686.00†	56.956	339.639	6516.08	-18.66	-39.79	-58.78	1688360.36	14350245.82	39°31'1.4518"N	80°49'47.9989"W	70.98	235.901	10.15	10.15	-0.09	Burkett: 6686' MD
6709.00	59.290	339.620	6528.22	0.87	-21.48	-65.57	1688353.56	14350264.12	39°31'1.6328"N	80°49'48.0852"W	69.00	251.859	10.15	10.15	-0.08	
6732.00†	61.614	339.870	6539.57	20.87	-2.71	-72.50	1688346.64	14350282.89	39°31'1.8185"N	80°49'48.1731"W	72.55	267.856	10.15	10.11	1.09	Tully: 6732' MD
6756.00	64.040	340.120	6550.53	42.21	17.35	-79.80	1688339.34	14350302.94	39°31'2.0169"N	80°49'48.2658"W	81.67	282.264	10.15	10.11	1.04	
6809.00	69.210	340.420	6571.55	90.84	63.13	-96.22	1688322.93	14350348.70	39°31'2.4696"N	80°49'48.4742"W	115.08	303.268	9.77	9.75	0.57	
6851.00	73.940	340.360	6584.82	130.67	100.65	-109.59	1688309.57	14350386.21	39°31'2.8408"N	80°49'48.6439"W	148.80	312.566	11.26	11.26	-0.14	
6900.00†	78.241	340.726	6596.59	178.22	145.49	-125.43	1688293.73	14350431.03	39°31'3.2842"N	80°49'48.8449"W	192.09	319.235	8.81	8.78	0.75	Marcellus POE: 6900' MD
6946.00	82.280	341.060	6604.37	223.55	188.32	-140.26	1688278.90	14350473.84	39°31'3.7078"N	80°49'49.0332"W	234.81	323.321	8.81	8.78	0.73	
7041.00	84.050	339.520	6615.68	317.86	277.11	-172.07	1688247.10	14350562.60	39°31'4.5859"N	80°49'49.4370"W	326.19	328.161	2.46	1.86	-1.62	
7135.00	90.310	340.410	6620.30	411.68	365.27	-204.22	1688214.97	14350650.73	39°31'5.4578"N	80°49'49.8450"W	418.48	330.791	6.73	6.66	0.95	
7230.00	90.620	338.660	6619.53	506.63	454.27	-237.43	1688181.77	14350739.69	39°31'6.3381"N	80°49'50.2667"W	512.58	332.405	1.87	0.33	-1.84	
7325.00	91.170	338.500	6618.05	601.53	542.70	-272.12	1688147.09	14350828.08	39°31'7.2127"N	80°49'50.7072"W	607.10	333.369	0.60	0.58	-0.17	
7420.00	91.510	337.400	6615.83	696.35	630.72	-307.78	1688111.45	14350916.07	39°31'8.0833"N	80°49'51.1601"W	701.81	333.989	1.21	0.36	-1.16	
7515.00	90.370	339.200	6614.27	791.22	718.97	-342.90	1688076.35	14351004.29	39°31'8.9562"N	80°49'51.6061"W	796.55	334.502	2.24	-1.20	1.89	



# Actual Wellpath Report

Grapevine Unit 2H AWP Proj: 18481'  
Page 5 of 11



REFERENCE WELLPATH IDENTIFICATION			
Operator	ANTERO RESOURCES CORPORATION	Well	Grapevine Unit 2H
Field	Tyler	API	47-095-02708-0000
Facility	Margery Pad	Wellbore	Grapevine Unit 2H AWB
Slot	Slot #02		

WELLPATH DATA (207 stations)																
MD (ft)	Inclination [°]	Azimuth [°]	TVD (ft)	Vert Sect (ft)	North (ft)	East (ft)	Grid East [US ft]	Grid North [US ft]	Latitude	Longitude	Closure Dist (ft)	Closure Dir [°]	DLS [°/100ft]	Build Rate [°/100ft]	Turn Rate [°/100ft]	Comments
7610.00	90.490	340.240	6613.55	886.18	808.08	-375.82	1688043.44	14351093.36	39°31'9.8375"N	80°49'52.0241"W	891.20	335.058	1.10	0.13	1.09	
7705.00	90.520	339.380	6612.72	981.15	897.24	-408.61	1688010.66	14351182.48	39°31'10.7192"N	80°49'52.4403"W	985.90	335.515	0.91	0.03	-0.91	
7799.00	90.370	339.580	6611.99	1075.11	985.27	-441.56	1687977.73	14351270.48	39°31'11.5899"N	80°49'52.8587"W	1079.69	335.860	0.27	-0.16	0.21	
7894.00	90.620	340.010	6611.17	1170.08	1074.42	-474.37	1687944.93	14351359.59	39°31'12.4716"N	80°49'53.2752"W	1174.48	336.178	0.52	0.26	0.45	
7989.00	90.830	340.630	6609.96	1265.06	1163.86	-506.36	1687912.95	14351449.00	39°31'13.3562"N	80°49'53.6813"W	1269.24	336.488	0.69	0.22	0.65	
8084.00	90.800	340.600	6608.61	1360.05	1253.47	-537.89	1687881.44	14351538.57	39°31'14.2424"N	80°49'54.0814"W	1364.00	336.775	0.04	-0.03	-0.03	
8179.00	90.180	342.840	6607.80	1455.03	1343.67	-567.68	1687851.65	14351628.73	39°31'15.1344"N	80°49'54.4595"W	1458.66	337.097	2.45	-0.65	2.36	
8273.00	89.880	341.900	6607.75	1549.01	1433.25	-596.15	1687823.20	14351718.28	39°31'16.0203"N	80°49'54.8206"W	1552.29	337.415	1.05	-0.32	-1.00	
8368.00	89.880	342.040	6607.95	1644.00	1523.58	-625.56	1687793.80	14351808.58	39°31'16.9136"N	80°49'55.1937"W	1647.01	337.678	0.15	0.00	0.15	
8463.00	89.910	342.000	6608.12	1738.99	1613.95	-654.88	1687764.49	14351898.90	39°31'17.8072"N	80°49'55.5657"W	1741.75	337.914	0.05	0.03	-0.04	
8558.00	89.510	341.940	6608.60	1833.98	1704.28	-684.28	1687735.10	14351989.20	39°31'18.7006"N	80°49'55.9388"W	1836.52	338.124	0.43	-0.42	-0.06	
8653.00	89.350	342.050	6609.55	1928.96	1794.62	-713.65	1687705.75	14352079.51	39°31'19.5940"N	80°49'56.3114"W	1931.31	338.314	0.20	-0.17	0.12	
8748.00	89.690	342.030	6610.35	2023.95	1884.99	-742.94	1687676.47	14352169.84	39°31'20.4877"N	80°49'56.6830"W	2026.12	338.489	0.36	0.36	-0.02	
8843.00	89.720	342.140	6610.83	2118.93	1975.38	-772.16	1687647.26	14352260.19	39°31'21.3816"N	80°49'57.0538"W	2120.94	338.650	0.12	0.03	0.12	
8937.00	89.880	342.170	6611.16	2212.92	2064.86	-800.97	1687618.46	14352349.63	39°31'22.2664"N	80°49'57.4192"W	2214.77	338.799	0.17	0.17	0.03	
9032.00	90.250	339.760	6611.05	2307.91	2154.66	-831.95	1687587.49	14352439.40	39°31'23.1545"N	80°49'57.8124"W	2309.69	338.888	2.57	0.39	-2.54	
9127.00	91.080	341.660	6609.95	2402.90	2244.31	-863.33	1687556.13	14352529.02	39°31'24.0412"N	80°49'58.2107"W	2404.64	338.960	2.18	0.87	2.00	
9222.00	90.430	340.210	6608.70	2497.88	2334.09	-894.36	1687525.11	14352618.76	39°31'24.9291"N	80°49'58.6046"W	2499.57	339.035	1.67	-0.68	-1.53	
9317.00	90.740	342.350	6607.73	2592.87	2424.06	-924.84	1687494.64	14352708.69	39°31'25.8188"N	80°49'58.9915"W	2594.49	339.117	2.28	0.33	2.25	
9412.00	89.480	339.500	6607.55	2687.86	2513.83	-955.88	1687463.61	14352798.42	39°31'26.7066"N	80°49'59.3855"W	2689.43	339.181	3.28	-1.33	-3.00	
9507.00	90.490	338.480	6607.57	2782.79	2602.51	-989.94	1687429.56	14352887.07	39°31'27.5837"N	80°49'59.8180"W	2784.43	339.174	1.51	1.06	-1.07	
9601.00	91.450	339.810	6605.98	2876.72	2690.34	-1023.40	1687396.12	14352974.86	39°31'28.4523"N	80°50'0.2429"W	2878.41	339.173	1.74	1.02	1.41	
9696.00	91.110	339.350	6603.86	2971.66	2779.34	-1056.54	1687362.99	14353063.83	39°31'29.3326"N	80°50'0.6637"W	2973.39	339.186	0.60	-0.36	-0.48	
9791.00	90.400	337.060	6602.61	3066.52	2867.54	-1091.81	1687327.74	14353151.99	39°31'30.2049"N	80°50'1.1117"W	3068.36	339.156	2.52	-0.75	-2.41	
9886.00	91.020	337.830	6601.43	3161.31	2955.26	-1128.24	1687291.32	14353239.68	39°31'31.0726"N	80°50'1.5746"W	3163.31	339.104	1.04	0.65	0.81	
9981.00	90.950	339.880	6599.80	3256.22	3043.85	-1162.50	1687257.07	14353328.24	39°31'31.9487"N	80°50'2.0097"W	3258.29	339.097	2.16	-0.07	2.16	
10076.00	91.510	344.880	6597.76	3351.14	3134.34	-1191.25	1687222.34	14353418.69	39°31'32.8436"N	80°50'2.3744"W	3353.08	339.190	5.29	0.59	5.26	
10171.00	91.600	344.530	6595.18	3445.92	3225.94	-1216.30	1687203.30	14353510.26	39°31'33.7494"N	80°50'2.6919"W	3447.62	339.342	0.38	0.09	-0.37	
10265.00	90.770	342.610	6593.23	3539.81	3316.08	-1242.88	1687176.73	14353600.36	39°31'34.6407"N	80°50'3.0290"W	3541.35	339.454	2.22	-0.88	-2.04	
10360.00	89.820	342.650	6592.74	3634.78	3406.75	-1271.24	1687148.38	14353690.99	39°31'35.5373"N	80°50'3.3888"W	3636.20	339.537	1.00	-1.00	0.04	



# Actual Wellpath Report

Grapevine Unit 2H AWP Proj: 18481'

Page 6 of 11



REFERENCE WELLPATH IDENTIFICATION				
Operator	ANTERO RESOURCES CORPORATION		Well	Grapevine Unit 2H
Field	Tyler		API	47-095-02708-0000
Facility	Margery Pad		Wellbore	Grapevine Unit 2H AWB
Slot	Slot #02			

WELLPATH DATA (207 stations)																
MD [ft]	Inclination [°]	Azimuth [°]	TVD [ft]	Vert Sect [ft]	North [ft]	East [ft]	Grid East [US ft]	Grid North [US ft]	Latitude	Longitude	Closure Dist [ft]	Closure Dir [°]	DLS [°/100ft]	Build Rate [°/100ft]	Turn Rate [°/100ft]	Comments
10455.00	90.550	344.140	6592.44	3729.70	3497.78	-1298.38	1687121.24	14353781.99	39°31'36.4375"N	80°50'3.7331"W	3730.99	339.635	1.75	0.77	1.57	
10550.00	91.080	345.090	6591.09	3824.52	3589.37	-1323.59	1687096.05	14353873.53	39°31'37.3432"N	80°50'4.0525"W	3825.63	339.758	1.15	0.56	1.00	
10645.00	90.340	344.290	6589.91	3919.33	3680.99	-1348.67	1687070.98	14353965.12	39°31'38.2491"N	80°50'4.3705"W	3920.28	339.878	1.15	-0.78	-0.84	
10739.00	90.060	344.530	6589.58	4013.17	3771.53	-1373.93	1687045.73	14354055.62	39°31'39.1444"N	80°50'4.6907"W	4013.99	339.984	0.39	-0.30	0.26	
10834.00	90.280	344.610	6589.30	4108.00	3863.10	-1399.21	1687020.46	14354147.16	39°31'40.0500"N	80°50'5.0112"W	4108.69	340.090	0.25	0.23	0.08	
10929.00	90.310	343.780	6588.81	4202.86	3954.51	-1425.08	1686994.60	14354238.53	39°31'40.9538"N	80°50'5.3392"W	4203.45	340.182	0.87	0.03	-0.87	
11023.00	90.370	342.590	6588.25	4296.80	4044.49	-1452.27	1686967.42	14354328.47	39°31'41.8436"N	80°50'5.6841"W	4297.32	340.248	1.27	0.06	-1.27	
11118.00	90.370	342.590	6587.64	4391.77	4135.13	-1480.70	1686939.01	14354419.08	39°31'42.7400"N	80°50'6.0448"W	4392.24	340.299	0.00	0.00	0.00	
11213.00	90.460	343.870	6586.95	4486.70	4226.09	-1508.10	1686911.61	14354510.00	39°31'43.6394"N	80°50'6.3924"W	4487.12	340.361	1.35	0.09	1.35	
11308.00	90.460	343.910	6586.19	4581.59	4317.36	-1534.46	1686885.26	14354601.23	39°31'44.5419"N	80°50'6.7267"W	4581.94	340.434	0.04	0.00	0.04	
11403.00	89.940	341.630	6585.86	4676.54	4408.09	-1562.60	1686857.13	14354691.93	39°31'45.4391"N	80°50'7.0837"W	4676.85	340.481	2.46	-0.55	-2.40	
11498.00	90.060	342.090	6585.86	4771.54	4498.36	-1592.18	1686827.57	14354782.17	39°31'46.3319"N	80°50'7.4590"W	4771.82	340.509	0.50	0.13	0.48	
11592.00	90.000	342.260	6585.81	4865.52	4587.85	-1620.95	1686798.80	14354871.62	39°31'47.2169"N	80°50'7.8242"W	4865.79	340.541	0.19	-0.06	0.18	
11687.00	90.000	342.030	6585.81	4960.51	4678.28	-1650.08	1686769.69	14354962.01	39°31'48.1111"N	80°50'8.1938"W	4960.75	340.572	0.24	0.00	-0.24	
11782.00	90.150	341.560	6585.68	5055.50	4768.52	-1679.76	1686740.02	14355052.22	39°31'49.0035"N	80°50'8.5705"W	5055.73	340.595	0.52	0.16	-0.49	
11877.00	90.060	341.630	6585.51	5150.50	4858.66	-1709.76	1686710.04	14355142.32	39°31'49.8950"N	80°50'8.9512"W	5150.71	340.613	0.12	-0.09	0.07	
11971.00	90.520	341.500	6585.03	5244.49	4947.84	-1739.48	1686680.32	14355231.46	39°31'50.7768"N	80°50'9.3285"W	5244.70	340.630	0.51	0.49	-0.14	
12066.00	90.830	341.470	6583.91	5339.48	5037.91	-1769.65	1686650.17	14355321.50	39°31'51.6676"N	80°50'9.7113"W	5339.68	340.645	0.33	0.33	-0.03	
12161.00	90.650	340.270	6582.69	5434.47	5127.66	-1800.78	1686619.05	14355411.21	39°31'52.5552"N	80°50'10.1065"W	5434.67	340.649	1.28	-0.19	-1.26	
12256.00	90.770	342.540	6581.51	5529.46	5217.68	-1831.06	1686588.78	14355501.20	39°31'53.4455"N	80°50'10.4910"W	5529.65	340.662	2.39	0.13	2.39	
12351.00	90.550	341.660	6580.42	5624.44	5308.08	-1860.26	1686559.59	14355591.56	39°31'54.3394"N	80°50'10.8615"W	5624.61	340.687	0.95	-0.23	-0.93	
12446.00	90.400	342.480	6579.63	5719.42	5398.46	-1889.51	1686530.36	14355681.91	39°31'55.2332"N	80°50'11.2327"W	5719.58	340.710	0.88	-0.16	0.86	
12540.00	90.430	342.410	6578.95	5813.39	5488.08	-1917.86	1686502.02	14355771.49	39°31'56.1194"N	80°50'11.5924"W	5813.54	340.738	0.08	0.03	-0.07	
12635.00	90.220	339.660	6578.41	5908.38	5577.91	-1948.73	1686471.16	14355861.29	39°31'57.0078"N	80°50'11.9844"W	5908.52	340.742	2.90	-0.22	-2.89	
12730.00	90.490	340.580	6577.82	6003.36	5667.25	-1981.03	1686438.87	14355950.59	39°31'57.8914"N	80°50'12.3946"W	6003.52	340.733	1.01	0.28	0.97	
12825.00	90.280	340.150	6577.18	6098.35	5756.72	-2012.95	1686406.96	14356040.02	39°31'58.7762"N	80°50'12.7999"W	6098.51	340.727	0.50	-0.22	-0.45	
12920.00	90.220	340.370	6576.77	6193.34	5846.14	-2045.04	1686374.89	14356129.41	39°31'59.6605"N	80°50'13.2074"W	6193.51	340.720	0.24	-0.06	0.23	
13015.00	90.430	340.410	6576.23	6288.33	5935.63	-2076.92	1686343.02	14356218.86	39°32'0.5455"N	80°50'13.6122"W	6288.50	340.715	0.23	0.22	0.04	
13110.00	90.250	340.130	6575.66	6383.32	6025.05	-2108.99	1686310.96	14356308.24	39°32'1.4299"N	80°50'14.0194"W	6383.50	340.708	0.35	-0.19	-0.29	
13204.00	90.370	340.010	6575.16	6477.30	6113.42	-2141.03	1686278.93	14356396.58	39°32'2.3038"N	80°50'14.4264"W	6477.49	340.699	0.18	0.13	-0.13	



# Actual Wellpath Report

Grapevine Unit 2H AWP Proj: 18481'

Page 7 of 11



REFERENCE WELLPATH IDENTIFICATION				
Operator	ANTERO RESOURCES CORPORATION		Well	Grapevine Unit 2H
Field	Tyler		API	47-095-02708-0000
Facility	Margery Pad		Wellbore	Grapevine Unit 2H AWB
Slot	Slot #02			

WELLPATH DATA (207 stations)																
MD (ft)	Inclination (°)	Azimuth (°)	TVD (ft)	Vert Sect (ft)	North (ft)	East (ft)	Grid East (US ft)	Grid North (US ft)	Latitude	Longitude	Closure Dist (ft)	Closure Dir (°)	DLS (°/100ft)	Build Rate (°/100ft)	Turn Rate (°/100ft)	Comments
13299.00	90.340	340.260	6574.57	6572.28	6202.76	-2173.32	1686246.66	14356485.89	39°32'3.1874"N	80°50'14.8363"W	6572.49	340.691	0.27	-0.03	0.26	
13394.00	90.220	340.160	6574.10	6667.27	6292.15	-2205.48	1686214.51	14356575.24	39°32'4.0715"N	80°50'15.2447"W	6667.48	340.684	0.16	-0.13	-0.11	
13489.00	90.310	340.320	6573.66	6762.26	6381.56	-2237.60	1686182.41	14356664.61	39°32'4.9556"N	80°50'15.6526"W	6762.48	340.678	0.19	0.09	0.17	
13584.00	90.180	339.470	6573.26	6857.23	6470.77	-2270.25	1686149.76	14356753.78	39°32'5.8379"N	80°50'16.0673"W	6857.47	340.667	0.91	-0.14	-0.89	
13679.00	90.340	339.400	6572.83	6952.19	6559.71	-2303.62	1686116.41	14356842.69	39°32'6.7176"N	80°50'16.4912"W	6952.45	340.650	0.18	0.17	-0.07	
13773.00	90.340	340.570	6572.27	7046.17	6648.03	-2335.79	1686084.25	14356930.98	39°32'7.5910"N	80°50'16.8998"W	7046.44	340.641	1.24	0.00	1.24	
13868.00	90.280	340.110	6571.75	7141.16	6737.49	-2367.76	1686052.30	14357020.40	39°32'8.4758"N	80°50'17.3056"W	7141.43	340.637	0.49	-0.06	-0.48	
13963.00	90.220	340.080	6571.34	7236.14	6826.82	-2400.10	1686019.97	14357109.69	39°32'9.3591"N	80°50'17.7164"W	7236.43	340.630	0.07	-0.06	-0.03	
14058.00	90.340	340.550	6570.87	7331.13	6916.26	-2432.10	1685987.98	14357199.10	39°32'10.2437"N	80°50'18.1228"W	7331.42	340.626	0.51	0.13	0.49	
14152.00	90.370	339.910	6570.29	7425.12	7004.72	-2463.89	1685956.20	14357287.52	39°32'11.1186"N	80°50'18.5266"W	7425.42	340.621	0.68	0.03	-0.68	
14247.00	90.340	340.280	6569.70	7520.10	7094.04	-2496.24	1685923.87	14357376.81	39°32'12.0019"N	80°50'18.9373"W	7520.41	340.614	0.39	-0.03	0.39	
14342.00	90.280	340.200	6569.19	7615.08	7183.45	-2528.35	1685891.77	14357466.18	39°32'12.8861"N	80°50'19.3452"W	7615.41	340.609	0.11	-0.06	-0.08	
14437.00	90.400	340.700	6568.63	7710.08	7272.97	-2560.14	1685859.99	14357555.66	39°32'13.7714"N	80°50'19.7489"W	7710.41	340.608	0.54	0.13	0.53	
14532.00	90.340	340.500	6568.01	7805.07	7362.57	-2591.70	1685828.45	14357645.23	39°32'14.6576"N	80°50'20.1496"W	7805.41	340.607	0.22	-0.06	-0.21	
14627.00	90.400	339.990	6567.40	7900.06	7451.98	-2623.81	1685796.35	14357734.60	39°32'15.5418"N	80°50'20.5574"W	7900.40	340.603	0.54	0.06	-0.54	
14722.00	90.310	340.150	6566.81	7995.04	7541.29	-2656.19	1685763.98	14357823.88	39°32'16.4250"N	80°50'20.9687"W	7995.40	340.597	0.19	-0.09	0.17	
14817.00	90.150	339.510	6566.43	8090.01	7630.46	-2688.94	1685731.24	14357913.01	39°32'17.3069"N	80°50'21.3847"W	8090.39	340.588	0.69	-0.17	-0.67	
14912.00	90.250	339.910	6566.10	8184.98	7719.57	-2721.89	1685698.31	14358002.08	39°32'18.1881"N	80°50'21.8032"W	8185.37	340.578	0.43	0.11	0.42	
15006.00	90.150	339.910	6565.77	8278.96	7807.85	-2754.18	1685666.03	14358090.33	39°32'19.0612"N	80°50'22.2133"W	8279.37	340.570	0.11	-0.11	0.00	
15101.00	90.180	340.010	6565.50	8373.94	7897.09	-2786.73	1685633.49	14358179.54	39°32'19.9438"N	80°50'22.6268"W	8374.36	340.563	0.11	0.03	0.11	
15196.00	90.250	340.340	6565.14	8468.92	7986.46	-2818.95	1685601.29	14358268.87	39°32'20.8277"N	80°50'23.0360"W	8469.36	340.559	0.36	0.07	0.35	
15291.00	90.250	340.490	6564.72	8563.91	8075.96	-2850.79	1685569.46	14358358.34	39°32'21.7128"N	80°50'23.4404"W	8564.36	340.557	0.16	0.00	0.16	
15386.00	90.310	339.490	6564.26	8658.89	8165.23	-2883.30	1685536.96	14358447.57	39°32'22.5956"N	80°50'23.8533"W	8659.35	340.551	1.05	0.06	-1.05	
15481.00	90.250	339.940	6563.80	8753.86	8254.33	-2916.24	1685504.04	14358536.64	39°32'23.4768"N	80°50'24.2716"W	8754.34	340.542	0.48	-0.06	0.47	
15576.00	90.220	339.990	6563.41	8848.84	8343.58	-2948.78	1685471.51	14358625.85	39°32'24.3595"N	80°50'24.6850"W	8849.33	340.536	0.06	-0.03	0.05	
15670.00	90.150	340.030	6563.10	8942.82	8431.92	-2980.92	1685439.38	14358714.15	39°32'25.2331"N	80°50'25.0932"W	8943.33	340.530	0.09	-0.07	0.04	
15765.00	90.280	339.700	6562.75	9037.80	8521.11	-3013.62	1685406.70	14358803.31	39°32'26.1152"N	80°50'25.5086"W	9038.32	340.523	0.37	0.14	-0.35	
15860.00	90.220	340.100	6562.33	9132.78	8610.33	-3046.26	1685374.06	14358892.49	39°32'26.9975"N	80°50'25.9233"W	9133.32	340.517	0.43	-0.06	0.42	
15955.00	90.280	340.110	6561.92	9227.76	8699.66	-3078.59	1685341.75	14358981.78	39°32'27.8809"N	80°50'26.3339"W	9228.31	340.512	0.06	0.06	0.01	
16050.00	90.490	340.220	6561.28	9322.74	8789.02	-3110.83	1685309.53	14359071.11	39°32'28.7647"N	80°50'26.7433"W	9323.31	340.509	0.25	0.22	0.12	





# Actual Wellpath Report

Grapevine Unit 2H AWP Proj: 18481'

Page 8 of 11



REFERENCE WELLPATH IDENTIFICATION				
Operator	ANTERO RESOURCES CORPORATION		Well	Grapevine Unit 2H
Field	Tyler		API	47-095-02708-0000
Facility	Margery Pad		Wellbore	Grapevine Unit 2H AWB
Slot	Slot #02			

WELLPATH DATA (207 stations) † = interpolated, ‡ = extrapolated station																
MD [ft]	Inclination [°]	Azimuth [°]	TVD [ft]	Vert Sect [ft]	North [ft]	East [ft]	Grid East [US ft]	Grid North [US ft]	Latitude	Longitude	Closure Dist [ft]	Closure Dir [°]	DLS [°/100ft]	Build Rate [°/100ft]	Turn Rate [°/100ft]	Comments
16144.00	90.580	340.380	6560.40	9416.73	8877.51	-3142.51	1685277.85	14359159.57	39°32'29.6398"N	80°50'27.1458"W	9417.30	340.507	0.20	0.10	0.17	
16239.00	90.120	339.660	6559.82	9511.71	8966.79	-3174.97	1685245.41	14359248.81	39°32'30.5228"N	80°50'27.5581"W	9512.30	340.502	0.90	-0.48	-0.76	
16334.00	90.060	339.380	6559.67	9606.67	9055.79	-3208.21	1685212.18	14359337.77	39°32'31.4029"N	80°50'27.9804"W	9607.28	340.492	0.30	-0.06	-0.29	
16429.00	90.890	341.280	6558.88	9701.65	9145.24	-3240.19	1685180.22	14359427.18	39°32'32.2875"N	80°50'28.3865"W	9702.28	340.491	2.18	0.87	2.00	
16524.00	91.050	342.700	6557.28	9796.63	9235.57	-3269.55	1685150.86	14359517.48	39°32'33.1808"N	80°50'28.7593"W	9797.23	340.505	1.50	0.17	1.49	
16618.00	90.920	341.690	6555.66	9890.59	9325.05	-3298.29	1685122.14	14359606.93	39°32'34.0657"N	80°50'29.1241"W	9891.17	340.521	1.08	-0.14	-1.07	
16713.00	90.550	341.010	6554.44	9985.59	9415.05	-3328.67	1685091.77	14359696.89	39°32'34.9557"N	80°50'29.5099"W	9986.15	340.529	0.81	-0.39	-0.72	
16808.00	90.090	341.330	6553.91	10080.58	9504.97	-3359.33	1685061.12	14359786.77	39°32'35.8449"N	80°50'29.8992"W	10081.15	340.535	0.59	-0.48	0.34	
16903.00	90.280	342.010	6553.60	10175.58	9595.15	-3389.21	1685031.26	14359876.91	39°32'36.7367"N	80°50'30.2786"W	10176.13	340.546	0.74	0.20	0.72	
16998.00	90.180	342.200	6553.22	10270.56	9685.55	-3418.40	1685002.08	14359967.28	39°32'37.6307"N	80°50'30.6491"W	10271.09	340.560	0.23	-0.11	0.20	
17092.00	90.180	341.300	6552.93	10364.56	9774.82	-3447.83	1684972.65	14360056.52	39°32'38.5135"N	80°50'31.0229"W	10365.07	340.571	0.96	0.00	-0.96	
17187.00	90.650	342.260	6552.24	10459.55	9865.05	-3477.54	1684942.96	14360146.71	39°32'39.4058"N	80°50'31.4000"W	10460.04	340.582	1.13	0.49	1.01	
17282.00	90.030	342.360	6551.68	10554.53	9955.56	-3506.40	1684914.11	14360237.18	39°32'40.3008"N	80°50'31.7665"W	10555.00	340.597	0.66	-0.65	0.11	
17377.00	89.660	342.300	6551.93	10649.50	10046.08	-3535.24	1684885.28	14360327.66	39°32'41.1959"N	80°50'32.1325"W	10649.95	340.613	0.39	-0.39	-0.06	
17471.00	89.020	341.700	6553.02	10743.49	10135.47	-3564.28	1684856.25	14360417.02	39°32'42.0799"N	80°50'32.5013"W	10743.92	340.625	0.93	-0.68	-0.64	
17566.00	89.170	341.970	6554.52	10838.47	10225.72	-3593.90	1684826.65	14360507.24	39°32'42.9724"N	80°50'32.8773"W	10838.89	340.636	0.33	0.16	0.28	
17661.00	89.170	342.190	6555.89	10933.44	10316.10	-3623.12	1684797.43	14360597.58	39°32'43.8662"N	80°50'33.2483"W	10933.85	340.648	0.23	0.00	0.23	
17756.00	89.970	341.830	6556.61	11028.43	10406.46	-3652.46	1684768.11	14360687.90	39°32'44.7597"N	80°50'33.6209"W	11028.82	340.660	0.92	0.84	-0.38	
17850.00	90.520	341.960	6556.20	11122.42	10495.80	-3681.67	1684738.91	14360777.21	39°32'45.6432"N	80°50'33.9917"W	11122.79	340.670	0.60	0.59	0.14	
17945.00	90.430	342.040	6555.42	11217.41	10586.15	-3711.03	1684709.56	14360867.52	39°32'46.5366"N	80°50'34.3645"W	11217.77	340.682	0.13	-0.09	0.08	
18040.00	90.650	341.890	6554.52	11312.39	10676.48	-3740.44	1684680.16	14360957.81	39°32'47.4299"N	80°50'34.7379"W	11312.74	340.692	0.28	0.23	-0.16	
18135.00	90.280	341.800	6553.75	11407.38	10766.74	-3770.04	1684650.58	14361048.04	39°32'48.3225"N	80°50'35.1137"W	11407.72	340.702	0.40	-0.39	-0.09	
18229.00	90.250	341.300	6553.31	11501.38	10855.91	-3799.79	1684620.84	14361137.18	39°32'49.2043"N	80°50'35.4915"W	11501.70	340.709	0.53	-0.03	-0.53	
18324.00	90.650	341.570	6552.57	11596.37	10945.96	-3830.03	1684590.61	14361227.19	39°32'50.0948"N	80°50'35.8756"W	11596.69	340.715	0.51	0.42	0.28	
18419.00	90.250	341.910	6551.82	11691.37	11036.18	-3859.80	1684560.85	14361317.37	39°32'50.9870"N	80°50'36.2535"W	11691.67	340.723	0.55	-0.42	0.36	
18456.00	90.650	342.430	6551.53	11728.36	11071.40	-3871.13	1684549.53	14361352.58	39°32'51.3353"N	80°50'36.3974"W	11728.66	340.728	1.77	1.08	1.41	
18481.00	†	90.650	342.430	6551.25	11753.35	11095.23	-3878.67	1684541.98	39°32'51.5709"N	80°50'36.4932"W	11753.65	340.731	0.00	0.00	0.00	Projected MD at TD: 18481'



# Actual Wellpath Report

Grapevine Unit 2H AWP Proj: 18481'  
Page 9 of 11



### REFERENCE WELLPATH IDENTIFICATION

Operator	ANTERO RESOURCES CORPORATION	Well	Grapevine Unit 2H
Field	Tyler	API	47-095-02708-0000
Facility	Margery Pad	Wellbore	Grapevine Unit 2H AWB
Slot	Slot #02		

### HOLE & CASING SECTIONS - Ref Wellbore: Grapevine Unit 2H AWB    Ref Wellpath: Grapevine Unit 2H AWP Proj: 18481'

String/Diameter	Start MD	End MD	Interval	Start TVD	End TVD	Start N/S	Start E/W	End N/S	End E/W
	[ft]	[ft]	[ft]	[ft]	[ft]	[ft]	[ft]	[ft]	[ft]
20in Conductor	25.50	105.50	80.00	25.50	105.50	0.00	0.00	-0.18	-0.01
17.5in Open Hole	105.50	390.00	284.50	105.50	390.00	-0.18	-0.01	-0.64	-0.56
13.375in Casing Surface	25.50	370.00	344.50	25.50	370.00	0.00	0.00	-0.64	-0.46
12.25in Open Hole	390.00	2634.00	2244.00	390.00	2633.90	-0.64	-0.56	8.99	-12.12
9.625in Casing Intermediate	25.50	2570.09	2544.59	25.50	2570.00	0.00	0.00	8.85	-11.50
8.75in Open Hole	2634.00	5769.00	3135.00	2633.90	5738.93	8.99	-12.12	-386.42	68.29
8.5in Open Hole	5769.00	18481.00	12712.00	5738.93	6551.25	-386.42	68.29	11095.23	-3878.67
5.5in Casing Production	25.50	18481.00	18455.50	25.50	6551.25	0.00	0.00	11095.23	-3878.67

### TARGETS

Name	TVD	North	East	Grid East	Grid North	Latitude	Longitude	Shape
	[ft]	[ft]	[ft]	[US ft]	[US ft]			
Grapevine Unit 2H POE Rev-2	6588.00	102.44	-115.16	1688304.00	14350388.00	39°31'2.8586"N	80°49'48.7149"W	point
Grapevine Unit 2H BHL Rev-2	6613.00	11092.12	-3868.24	1684552.42	14361373.29	39°32'51.5400"N	80°50'36.3600"W	point
Grapevine Unit 2H LP Rev-2	6613.00	279.95	-175.78	1688243.40	14350565.44	39°31'4.6141"N	80°49'49.4841"W	point
Grapevine Unit 2H 50' L/R Hard Line	7000.00	5597.28	-1991.70	1686428.21	14355880.65	39°31'57.2000"N	80°50'12.5323"W	rectangle
	2D Rectangle 11612.9 x 100.							



# Actual Wellpath Report

Grapevine Unit 2H AWP Proj: 18481'  
Page 10 of 11



REFERENCE WELLPATH IDENTIFICATION			
Operator	ANTERO RESOURCES CORPORATION	Well	Grapevine Unit 2H
Field	Tyler	API	47-095-02708-0000
Facility	Margery Pad	Wellbore	Grapevine Unit 2H AWB
Slot	Slot #02		

WELLPATH COMPOSITION - Ref Wellbore: Grapevine Unit 2H AWB    Ref Wellpath: Grapevine Unit 2H AWP Proj: 18481'					
Start MD (ft)	End MD (ft)	Positional Uncertainty Model	Log Name/Comment	Wellbore	Survey Date
25.50	380.00	Gyrodatta 2015 - GC+WIR+DPIPE	01_Gyrodatta MS Gyro <17-1/2"> (100'-380')	Grapevine Unit 2H AWB	14/Nov/2020
380.00	2559.00	BH NaviTrak (2019) (Axial)	02_APS EM <12-1/4"> (380')(422'-2559')	Grapevine Unit 2H AWB	14/Nov/2020
2559.00	5699.00	BH NaviTrak (2019) (Axial)	03_APS EM <8-3/4"> (2559')(2664'-5699')	Grapevine Unit 2H AWB	24/Nov/2020
5699.00	18481.00	BH AutoTrak Curve (2019) (Short spacing)	04_BH AT Curve <8-1/2"> (5699')(5744'-18456')	Grapevine Unit 2H AWB	24/Nov/2020



# Actual Wellpath Report

Grapevine Unit 2H AWP Proj: 18481'  
Page 11 of 11



REFERENCE WELLPATH IDENTIFICATION			
Operator	ANTERO RESOURCES CORPORATION	Well	Grapevine Unit 2H
Field	Tyler	API	47-095-02708-0000
Facility	Margery Pad	Wellbore	Grapevine Unit 2H AWB
Slot	Slot #02		

COMMENTS
<p><b>Wellpath general comments</b> API: 47-095-02708-0000 BH Job #: 110631537-B Rig: H&amp;P 317 Duration: 11/26/2020-11/30/2020 Gyrodatta MS Gyro &lt;17-1/2"&gt; (100'-380') APS EM &lt;12-1/4"&gt; (380')(422'-2559') APS EM &lt;8-3/4"&gt; (2559')(2664'-5699') BH AT Curve &lt;8-1/2"&gt; (5699')(5744'-18456') Sycamore: 6372' MD Middlesex: 6525' MD Burkett: 6686' MD Tully: 6732' MD Marcellus POE: 6900' MD Projected MD at TD: 18481'</p>

RECEIVED  
Office of Oil and Gas  
MAR 28 2023  
NY Department of  
Environmental Protection