



ANTERO RESOURCES CORPORATION

Location: Tyler County, WV
 Field: Tyler
 Facility: Gorrell Pad

Slot: Slot #07
 Well: Hodge Unit 1H
 Wellbore: Hodge Unit 1H PWB

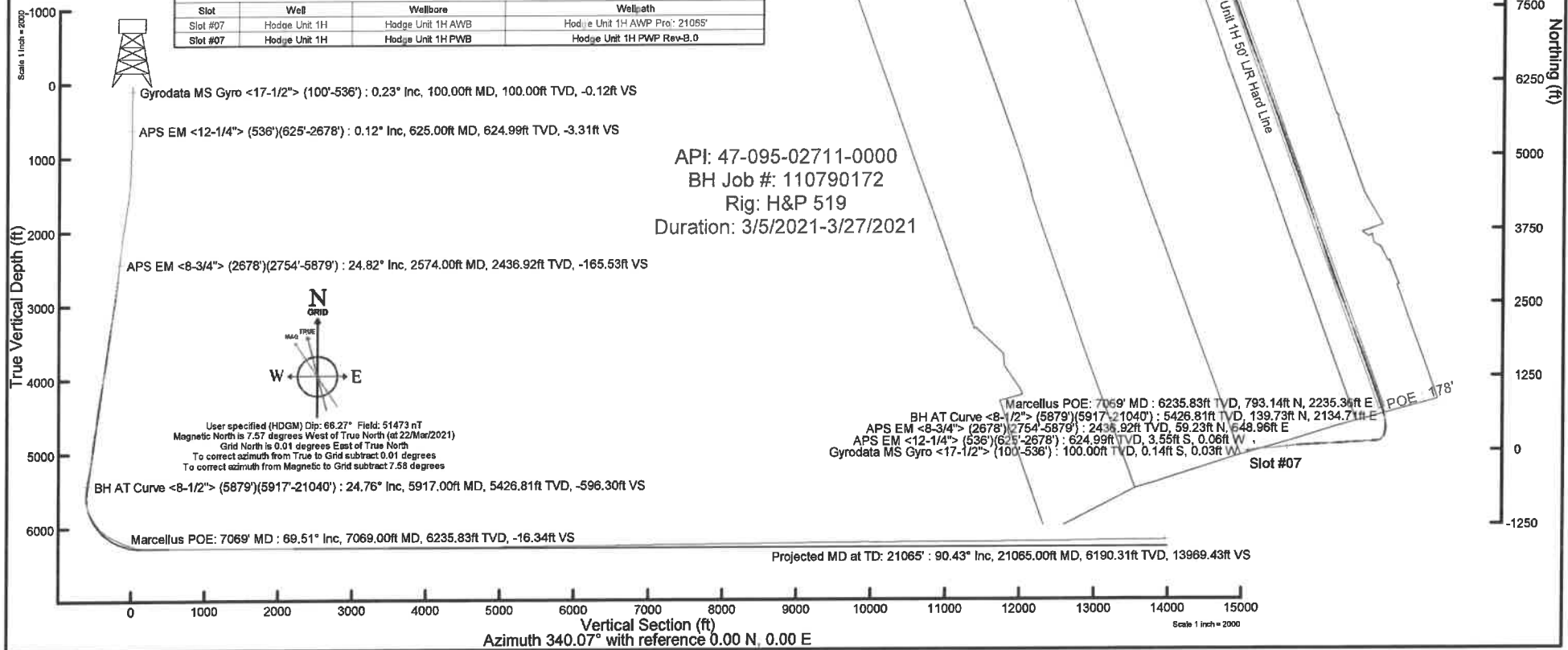


Plot reference wellpath is Hodge Unit 1H PWP Rev-8.0	Grid System: NAD27 / UTM Zone 17 North, US feet
True vertical depths are referenced to H&P 519 (RKB)	North Reference: Grid north
Reference wellpath measured depths are referenced to H&P 519 (RKB)	Scale: True distance
H&P 519 (RKB) to Mean Sea Level: 1075 feet	Coordinates are in feet referenced to Slot
Mean Sea Level to Ground level (At Slot #07): -1045 feet	Depths are in feet
Offset wellpath MDs are referenced to each path's default MD datum	Created by: odsayyar on 2021-04-05; Database: WA_MPL_EASTERNUS_Data

Location Information					
Facility Name	Grid East (US ft)	Grid North (US ft)	Latitude	Longitude	
Gorrell Pad	1843134.326	14314301.475	39°25'6.5020"N	80°59'25.3580"W	
Slot	Local N (ft)	Local E (ft)	Grid East (US ft)	Grid North (US ft)	Latitude
Slot #07	-96.60	-101.23	1843033.140	14314204.910	39°25'5.5473"N
Comment					
Hodge Unit 1H			30R		
H&P 519 (RKB) to Ground level (At Slot #07)			-1045ft		
Mean Sea Level to Ground level (At Slot #07)			1075ft		
H&P 519 (RKB) to Mean Sea Level					

Well Profile Data								
Design Comment	MD (ft)	Inc (*)	Az (*)	TVD (ft)	Local N (ft)	Local E (ft)	DLS (*100R)	VS (ft)
Tie On	2678.00	23.430	82.500	2531.71	64.57	691.42	3.40	-174.99
Pro. to Bottom	2754.00	23.430	82.500	2601.44	68.51	721.38	0.00	-181.49
Drill Out	2834.00	23.430	82.500	2674.84	72.68	752.91	0.00	-188.34
End of 3D Arc	2957.81	28.672	86.789	2787.00	77.43	805.08	3.00	-201.63
Curve KOP	5998.47	28.672	86.789	5504.10	153.88	2167.85	0.00	-594.29
POE	6999.29	70.761	340.068	6240.00	703.04	2243.85	8.00	-103.93
Landing Pt.	7239.79	80.000	340.068	6280.00	924.91	2163.40	8.00	132.07
BHL	21097.80	90.000	340.068	6280.00	13952.82	-2560.80	0.00	13990.09

Well Data			
Slot	Well	Wellbore	Wellpath
Slot #07	Hodge Unit 1H	Hodge Unit 1H AWB	Hodge Unit 1H AWP Pro: 21065'
Slot #07	Hodge Unit 1H	Hodge Unit 1H PWB	Hodge Unit 1H PWP Rev-8.0





Actual Wellpath Report

Hodge Unit 1H AWP Proj: 21065'

Page 1 of 12



REFERENCE WELLPATH IDENTIFICATION

Operator	ANTERO RESOURCES CORPORATION	Well	Hodge Unit 1H
Field	Tyler	API	47-095-02711-0000
Facility	Gorrell Pad	Wellbore	Hodge Unit 1H AWB
Slot	Slot #07		

REPORT SETUP INFORMATION

Projection System	NAD27 / UTM Zone 17 North, US feet	Software System	WellArchitect® 6.0
North Reference	Grid	User	Edsaryar
Scale	0.999600	Report Generated	05/Apr/2021 at 16:14
Convergence at slot	0.01° East	Database	WA_MPL_EASTERNUS_Defn

WELLPATH LOCATION

	Local coordinates		Grid coordinates		Geographic coordinates	
	North[ft]	East[ft]	Easting[US ft]	Northing[US ft]	Latitude	Longitude
Slot Location	-96.60	-101.23	1643033.14	14314204.91	39°25'5.5473"N	80°59'26.6479"W
Facility Reference Pt			1643134.33	14314301.48	39°25'6.5020"N	80°59'25.3580"W
Field Reference Pt			0.00	0.00	0°00'0.0000"	85°29'19.3013"W

WELLPATH DATUM

Calculation method	Minimum curvature	H&P 519 (RKB) to Facility Vertical Datum	1075.00ft
Horizontal Reference Pt	Slot	H&P 519 (RKB) to Mean Sea Level	1075.00ft
Vertical Reference Pt	H&P 519 (RKB)	H&P 519 (RKB) to Ground Level at Slot (Slot #07)	30.00ft
MD Reference Pt	H&P 519 (RKB)	Section Origin	N 0.00, E 0.00 ft
Field Vertical Reference	Mean Sea Level	Section Azimuth	340.07°



Actual Wellpath Report

Hodge Unit 1H AWP Proj: 21065'

Page 2 of 12



REFERENCE WELLPATH IDENTIFICATION

Operator	ANTERO RESOURCES CORPORATION	Well	Hodge Unit 1H
Field	Tyler	API	47-095-02711-0000
Facility	Gorrell Pad	Wellbore	Hodge Unit 1H AWB
Slot	Slot #07		

WELLPATH DATA (232 stations) † = interpolated, ‡ = extrapolated station

MD [ft]	Inclination [°]	Azimuth [°]	TVD [ft]	Vert Sect [ft]	North [ft]	East [ft]	Grid East [US ft]	Grid North [US ft]	Latitude	Longitude	Closure Dist [ft]	Closure Dir [°]	DLS ["/100ft]	Build Rate ["/100ft]	Turn Rate ["/100ft]	Comments
0.00†	0.000	190.630	0.00	0.00	0.00	0.00	1643033.14	14314204.91	39°25'5.5473"N	80°59'26.6479"W	0.00	0.000	0.00	0.00	0.00	
30.00	0.000	190.630	30.00	0.00	0.00	0.00	1643033.14	14314204.91	39°25'5.5473"N	80°59'26.6479"W	0.00	0.000	0.00	0.00	0.00	
100.00	0.230	190.630	100.00	-0.12	-0.14	-0.03	1643033.11	14314204.77	39°25'5.5460"N	80°59'26.6483"W	0.14	190.630	0.33	0.33	0.00	Gyrodata MS Gyro <17-1/2"> (100'-536')
200.00	0.320	182.350	200.00	-0.55	-0.61	-0.07	1643033.07	14314204.30	39°25'5.5412"N	80°59'26.6489"W	0.62	186.904	0.10	0.09	-8.28	
300.00	0.420	179.220	300.00	-1.16	-1.26	-0.08	1643033.06	14314203.65	39°25'5.5349"N	80°59'26.6490"W	1.26	183.672	0.10	0.10	-3.13	
400.00	0.370	177.740	399.99	-1.81	-1.95	-0.06	1643033.08	14314202.96	39°25'5.5281"N	80°59'26.6487"W	1.95	181.855	0.05	-0.05	-1.48	
500.00	0.540	176.630	499.99	-2.57	-2.74	-0.02	1643033.12	14314202.17	39°25'5.5202"N	80°59'26.6482"W	2.74	180.474	0.17	0.17	-1.11	
536.00	0.500	185.880	535.99	-2.87	-3.07	-0.03	1643033.11	14314201.84	39°25'5.5170"N	80°59'26.6483"W	3.07	180.538	0.26	-0.11	25.69	
625.00	0.120	177.290	624.99	-3.31	-3.55	-0.06	1643033.08	14314201.36	39°25'5.5123"N	80°59'26.6488"W	3.55	181.037	0.43	-0.43	-9.65	APS EM <12-1/4"> (536')(625'-2678')
687.00	0.200	183.450	686.99	-3.47	-3.72	-0.07	1643033.07	14314201.19	39°25'5.5106"N	80°59'26.6488"W	3.72	181.042	0.13	0.13	9.94	
778.00	3.320	89.070	777.94	-4.48	-3.84	2.56	1643035.70	14314201.08	39°25'5.5094"N	80°59'26.6153"W	4.61	146.299	3.67	3.43	-103.71	
868.00	6.720	88.130	867.58	-6.96	-3.62	10.43	1643043.57	14314201.29	39°25'5.5115"N	80°59'26.5151"W	11.04	109.149	3.78	3.78	-1.04	
959.00	9.320	89.620	957.68	-11.08	-3.40	23.12	1643056.25	14314201.51	39°25'5.5137"N	80°59'26.3533"W	23.37	98.363	2.87	2.86	1.64	
1053.00	11.770	78.630	1050.10	-15.05	-1.46	40.14	1643073.26	14314203.45	39°25'5.5329"N	80°59'26.1365"W	40.16	92.080	3.36	2.61	-11.69	
1148.00	14.380	74.430	1142.63	-17.39	3.62	61.00	1643094.12	14314208.53	39°25'5.5830"N	80°59'25.8706"W	61.11	86.604	2.92	2.75	-4.42	
1243.00	16.700	75.270	1234.15	-19.53	10.26	85.57	1643118.68	14314215.16	39°25'5.6486"N	80°59'25.5576"W	86.18	83.164	2.45	2.44	0.88	
1337.00	19.050	79.090	1323.61	-23.16	16.60	113.70	1643146.80	14314221.50	39°25'5.7112"N	80°59'25.1992"W	114.91	81.696	2.79	2.50	4.06	
1432.00	21.440	82.570	1412.74	-29.34	21.78	146.15	1643179.23	14314226.68	39°25'5.7624"N	80°59'24.7857"W	147.76	81.525	2.82	2.52	3.66	
1527.00	23.620	84.910	1500.48	-37.98	25.71	182.33	1643215.39	14314230.61	39°25'5.8012"N	80°59'24.3247"W	184.13	81.973	2.48	2.29	2.46	
1621.00	26.240	87.530	1585.72	-49.04	28.28	221.85	1643254.90	14314233.18	39°25'5.8266"N	80°59'23.8211"W	223.65	82.736	3.02	2.73	2.79	
1716.00	26.830	87.970	1670.71	-61.93	29.94	264.26	1643297.29	14314234.84	39°25'5.8430"N	80°59'23.2807"W	265.95	83.536	0.65	0.62	0.46	
1810.00	26.610	87.120	1754.67	-74.62	31.75	306.49	1643339.50	14314236.65	39°25'5.8608"N	80°59'22.7427"W	308.13	84.085	0.47	-0.23	-0.90	
1905.00	26.470	86.530	1839.66	-86.86	34.10	348.87	1643381.87	14314239.00	39°25'5.8840"N	80°59'22.2027"W	350.53	84.417	0.31	-0.15	-0.62	
1999.00	27.240	86.160	1923.52	-98.76	36.81	391.24	1643424.23	14314241.71	39°25'5.9107"N	80°59'21.6627"W	392.97	84.625	0.84	0.82	-0.39	
2093.00	27.230	86.800	2007.10	-110.91	39.45	434.18	1643467.15	14314244.35	39°25'5.9368"N	80°59'21.1156"W	435.97	84.808	0.31	-0.01	0.68	
2188.00	27.990	84.760	2091.29	-122.82	42.70	478.08	1643511.03	14314247.59	39°25'5.9688"N	80°59'20.5562"W	479.99	84.896	1.28	0.80	-2.15	
2282.00	27.830	84.270	2174.35	-133.80	46.91	521.88	1643554.81	14314251.80	39°25'6.0103"N	80°59'19.9982"W	523.98	84.864	0.30	-0.17	-0.52	
2377.00	26.280	85.120	2258.95	-144.70	50.91	564.90	1643597.82	14314255.80	39°25'6.0498"N	80°59'19.4500"W	567.19	84.850	1.68	-1.63	0.89	
2472.00	25.240	84.200	2344.51	-155.10	54.75	606.01	1643638.91	14314259.63	39°25'6.0877"N	80°59'18.9262"W	608.48	84.838	1.17	-1.09	-0.97	
2566.00	24.890	83.920	2429.66	-164.73	58.87	645.62	1643678.50	14314263.75	39°25'6.1284"N	80°59'18.4215"W	648.30	84.790	0.39	-0.37	-0.30	



Actual Wellpath Report

Hodge Unit 1H AWP Proj: 21065'
Page 3 of 12



REFERENCE WELLPATH IDENTIFICATION			
Operator	ANTERO RESOURCES CORPORATION	Well	Hodge Unit 1H
Field	Tyler	API	47-095-02711-0000
Facility	Gorrell Pad	Wellbore	Hodge Unit 1H AWB
Slot	Slot #07		

WELLPATH DATA (232 stations) † = interpolated, ‡ = extrapolated station																
MD	Inclination	Azimuth	TVD	Vert Sect	North	East	Grid East	Grid North	Latitude	Longitude	Closure Dist	Closure Dir	DLS	Build Rate	Turn Rate	Comments
[ft]	[°]	[°]	[ft]	[ft]	[ft]	[ft]	[US ft]	[US ft]			[ft]	[°]	["/100ft]	["/100ft]	["/100ft]	
2574.00†	24.815	83.769	2436.92	-165.53	59.23	648.96	1643681.84	14314264.11	39°25'6.1319"N	80°59'18.3789"W	651.66	84.785	1.23	-0.94	-1.89	APS EM <8-3/4"> (2678')(2754'-5879')
2660.00	24.020	82.090	2515.23	-173.45	63.59	684.24	1643717.10	14314268.48	39°25'6.1751"N	80°59'17.9294"W	687.19	84.690	1.23	-0.92	-1.95	
2678.00	23.430	82.500	2531.71	-174.99	64.57	691.42	1643724.28	14314269.45	39°25'6.1847"N	80°59'17.8379"W	694.42	84.665	3.40	-3.28	2.28	
2754.00	23.580	79.380	2601.40	-180.70	69.34	721.34	1643754.19	14314274.22	39°25'6.2318"N	80°59'17.4567"W	724.66	84.509	1.65	0.20	-4.11	
2848.00	26.730	81.970	2686.48	-188.10	75.76	760.76	1643793.60	14314280.64	39°25'6.2952"N	80°59'16.9543"W	764.52	84.313	3.55	3.35	2.76	
2943.00	29.180	83.060	2770.39	-197.71	81.54	804.91	1643837.73	14314286.42	39°25'6.3523"N	80°59'16.3917"W	809.03	84.215	2.63	2.58	1.15	
3038.00	29.240	79.380	2853.32	-206.67	88.62	850.71	1643883.51	14314293.49	39°25'6.4222"N	80°59'15.8082"W	855.31	84.053	1.89	0.06	-3.87	
3135.00	30.160	83.820	2937.58	-216.30	95.61	898.23	1643931.01	14314300.48	39°25'6.4912"N	80°59'15.2027"W	903.30	83.924	2.46	0.95	4.58	
3229.00	26.970	88.850	3020.14	-228.78	98.58	943.03	1643975.79	14314303.45	39°25'6.5205"N	80°59'14.6318"W	948.17	84.032	4.25	-3.39	5.35	
3324.00	26.540	89.340	3104.97	-242.72	99.26	985.79	1644018.54	14314304.13	39°25'6.5271"N	80°59'14.0869"W	990.78	84.250	0.51	-0.45	0.52	
3419.00	25.570	87.220	3190.32	-255.77	100.50	1027.50	1644060.22	14314305.36	39°25'6.5393"N	80°59'13.5556"W	1032.40	84.414	1.42	-1.02	-2.23	
3513.00	25.260	85.340	3275.22	-267.03	103.11	1067.75	1644100.46	14314307.98	39°25'6.5651"N	80°59'13.0427"W	1072.72	84.484	0.92	-0.33	-2.00	
3608.00	24.740	81.700	3361.33	-276.38	107.63	1107.63	1644140.32	14314312.49	39°25'6.6097"N	80°59'12.5346"W	1112.84	84.450	1.71	-0.55	-3.83	
3702.00	24.370	85.660	3446.83	-285.56	111.93	1146.43	1644179.11	14314316.80	39°25'6.6522"N	80°59'12.0401"W	1151.88	84.424	1.79	-0.39	4.21	
3797.00	24.460	90.560	3533.34	-297.71	113.22	1185.64	1644218.31	14314318.09	39°25'6.6649"N	80°59'11.5405"W	1191.04	84.545	2.13	0.09	5.16	
3891.00	24.200	90.140	3619.00	-311.13	112.99	1224.37	1644257.02	14314317.85	39°25'6.6625"N	80°59'11.0470"W	1229.57	84.728	0.33	-0.28	-0.45	
3986.00	23.810	87.570	3705.78	-323.58	113.75	1263.00	1644295.63	14314318.62	39°25'6.6700"N	80°59'10.5548"W	1268.11	84.854	1.17	-0.41	-2.71	
4081.00	24.640	91.880	3792.42	-336.71	113.92	1301.96	1644334.57	14314318.78	39°25'6.6715"N	80°59'10.0584"W	1306.93	85.000	2.06	0.87	4.54	
4175.00	25.620	92.220	3877.52	-351.65	112.49	1341.85	1644374.45	14314317.35	39°25'6.6574"N	80°59'9.5501"W	1346.56	85.208	1.05	1.04	0.36	
4270.00	27.250	95.380	3962.59	-368.69	109.65	1384.03	1644416.62	14314314.52	39°25'6.6293"N	80°59'9.0126"W	1388.37	85.470	2.27	1.72	3.33	
4365.00	29.020	95.370	4046.36	-387.84	105.45	1428.63	1644461.20	14314310.32	39°25'6.5877"N	80°59'8.4444"W	1432.52	85.778	1.86	1.86	-0.01	
4460.00	28.420	90.790	4129.69	-405.69	102.99	1474.18	1644506.73	14314307.85	39°25'6.5633"N	80°59'7.8640"W	1477.78	86.004	2.40	-0.63	-4.82	
4554.00	27.040	86.230	4212.90	-419.55	104.08	1517.88	1644550.41	14314308.95	39°25'6.5740"N	80°59'7.3072"W	1521.44	86.077	2.69	-1.47	-4.85	
4649.00	27.540	89.940	4297.33	-433.03	105.53	1561.39	1644593.90	14314310.39	39°25'6.5882"N	80°59'6.7528"W	1564.95	86.134	1.87	0.53	3.91	
4743.00	27.360	85.630	4380.75	-446.21	107.19	1604.66	1644637.16	14314312.06	39°25'6.6046"N	80°59'6.2014"W	1608.24	86.178	2.12	-0.19	-4.59	
4838.00	26.770	83.440	4465.35	-457.01	111.30	1647.69	1644680.16	14314316.17	39°25'6.6452"N	80°59'5.6532"W	1651.44	86.136	1.22	-0.62	-2.31	
4933.00	27.590	83.470	4549.86	-467.06	116.25	1690.80	1644723.26	14314321.11	39°25'6.6940"N	80°59'5.1038"W	1694.79	86.067	0.86	0.86	0.03	
5027.00	27.900	85.800	4633.06	-478.07	120.33	1734.36	1644766.80	14314325.20	39°25'6.7343"N	80°59'4.5488"W	1738.53	86.031	1.20	0.33	2.48	
5122.00	29.620	90.210	4716.34	-492.18	121.88	1780.01	1644812.44	14314326.74	39°25'6.7495"N	80°59'3.9671"W	1784.18	86.083	2.87	1.81	4.64	
5217.00	28.910	87.460	4799.22	-507.13	122.81	1826.43	1644858.84	14314327.67	39°25'6.7586"N	80°59'3.3756"W	1830.55	86.153	1.60	-0.75	-2.89	



Actual Wellpath Report

Hodge Unit 1H AWP Proj: 21065'

Page 4 of 12



REFERENCE WELLPATH IDENTIFICATION

Operator	ANTERO RESOURCES CORPORATION	Well	Hodge Unit 1H
Field	Tyler	API	47-095-02711-0000
Facility	Gorrell Pad	Wellbore	Hodge Unit 1H AWB
Slot	Slot #07		

WELLPATH DATA (232 stations) † = interpolated, ‡ = extrapolated station

MD [ft]	Inclination [°]	Azimuth [°]	TVD [ft]	Vert Sect [ft]	North [ft]	East [ft]	Grid East [US ft]	Grid North [US ft]	Latitude	Longitude	Closure Dist [ft]	Closure Dir [°]	DLS [°/100ft]	Build Rate [°/100ft]	Turn Rate [°/100ft]	Comments
5311.00	27.670	84.000	4882.00	-519.17	126.10	1870.84	1644903.23	14314330.96	39°25'6.7910"N	80°59'2.8097"W	1875.09	86.144	2.19	-1.32	-3.68	
5406.00	27.270	80.220	4966.29	-528.32	132.10	1914.23	1644946.60	14314336.96	39°25'6.8503"N	80°59'2.2569"W	1918.78	86.052	1.88	-0.42	-3.98	
5501.00	24.300	81.210	5051.83	-535.93	138.79	1955.00	1644987.36	14314343.64	39°25'6.9163"N	80°59'1.7373"W	1959.92	85.939	3.16	-3.13	1.04	
5596.00	24.890	87.340	5138.22	-545.65	142.70	1994.30	1645026.64	14314347.55	39°25'6.9549"N	80°59'1.2366"W	1999.40	85.907	2.76	0.62	6.45	
5690.00	26.920	93.860	5222.79	-560.11	142.19	2035.30	1645067.62	14314347.04	39°25'6.9497"N	80°59'0.7142"W	2040.26	86.004	3.72	2.16	6.94	
5785.00	26.220	92.520	5307.76	-576.80	139.82	2077.72	1645110.03	14314344.67	39°25'6.9262"N	80°59'0.1736"W	2082.42	86.150	0.97	-0.74	-1.41	
5879.00	25.380	88.890	5392.39	-591.23	139.29	2118.61	1645150.90	14314344.15	39°25'6.9210"N	80°58'59.6526"W	2123.19	86.238	1.90	-0.89	-3.86	
5917.00	24.760	88.000	5426.81	-596.30	139.73	2134.71	1645166.99	14314344.58	39°25'6.9253"N	80°58'59.4475"W	2139.28	86.255	1.91	-1.63	-2.34	BH AT Curve <8-1/2"> (5879')(5917'-21040')
5986.00	24.820	87.280	5489.45	-605.04	140.92	2163.62	1645195.89	14314345.77	39°25'6.9370"N	80°58'59.0792"W	2168.20	86.273	0.45	0.09	-1.04	
6080.00	26.030	70.430	5574.46	-611.01	148.78	2202.81	1645235.06	14314353.63	39°25'7.0146"N	80°58'58.5798"W	2207.83	86.136	7.78	1.29	-17.93	
6175.00	25.640	45.430	5660.22	-602.55	170.25	2237.20	1645269.44	14314375.09	39°25'7.2267"N	80°58'58.1416"W	2243.66	85.648	11.40	-0.41	-26.32	
6270.00	28.820	24.750	5744.87	-577.63	205.55	2261.49	1645293.72	14314410.38	39°25'7.5756"N	80°58'57.8320"W	2270.81	84.806	10.45	3.35	-21.77	
6364.00	32.710	14.210	5825.69	-540.46	250.80	2277.22	1645309.45	14314455.61	39°25'8.0228"N	80°58'57.6313"W	2290.99	83.715	7.06	4.14	-11.21	
6459.00	35.220	8.740	5904.49	-495.16	302.78	2287.69	1645319.91	14314507.57	39°25'8.5365"N	80°58'57.4978"W	2307.64	82.461	4.16	2.64	-5.76	
6554.00	41.350	4.430	5979.04	-442.48	361.21	2294.29	1645326.50	14314565.97	39°25'9.1140"N	80°58'57.4137"W	2322.55	81.053	7.04	6.45	-4.54	
6623.00†	47.574	2.093	6028.26	-398.06	409.43	2296.98	1645329.20	14314614.18	39°25'9.5906"N	80°58'57.3792"W	2333.18	79.893	9.33	9.02	-3.39	Sycamore: 6623' MD
6648.00	49.840	1.360	6044.76	-380.60	428.21	2297.54	1645329.76	14314632.95	39°25'9.7762"N	80°58'57.3720"W	2337.11	79.443	9.33	9.06	-2.93	
6743.00	60.720	358.910	6098.79	-307.34	506.17	2297.62	1645329.83	14314710.87	39°25'10.5467"N	80°58'57.3709"W	2352.71	77.576	11.65	11.45	-2.58	
6801.00†	63.354	355.924	6125.99	-258.45	557.33	2295.29	1645327.51	14314762.01	39°25'11.0523"N	80°58'57.4004"W	2361.99	76.352	6.43	4.54	-5.15	Middlesex: 6801' MD
6837.00	65.020	354.140	6141.67	-227.14	589.61	2292.48	1645324.70	14314794.28	39°25'11.3714"N	80°58'57.4361"W	2367.09	75.576	6.43	4.63	-4.95	
6932.00	65.130	343.420	6181.80	-142.15	673.95	2275.75	1645307.97	14314878.59	39°25'12.2050"N	80°58'57.6491"W	2373.44	73.504	10.23	0.12	-11.28	
7011.00†	66.738	340.619	6214.02	-70.07	742.54	2253.47	1645285.71	14314947.16	39°25'12.8830"N	80°58'57.9328"W	2372.66	71.762	3.82	2.04	-3.55	Burkett: 7011' MD
7027.00	67.070	340.060	6220.29	-55.36	756.40	2248.52	1645280.76	14314961.01	39°25'13.0200"N	80°58'57.9958"W	2372.34	71.407	3.82	2.07	-3.49	
7057.00†	68.814	340.383	6231.56	-27.55	782.57	2239.11	1645271.35	14314987.16	39°25'13.2786"N	80°58'58.1156"W	2371.93	70.736	5.90	5.81	1.08	Tully: 7057' MD
7069.00†	69.512	340.509	6235.83	-16.34	793.14	2235.36	1645267.60	14314997.73	39°25'13.3830"N	80°58'58.1634"W	2371.90	70.465	5.90	5.81	1.06	Marcellus POE: 7069' MD
7070.00	69.570	340.520	6236.18	-15.40	794.02	2235.05	1645267.29	14314998.61	39°25'13.3918"N	80°58'58.1674"W	2371.90	70.442	5.90	5.82	1.05	
7121.00	74.430	340.910	6251.93	33.09	839.79	2219.04	1645251.28	14315044.36	39°25'13.8441"N	80°58'58.3713"W	2372.63	69.271	9.56	9.53	0.76	
7216.00	83.900	340.830	6269.77	126.28	927.84	2188.49	1645220.75	14315132.38	39°25'14.7145"N	80°58'58.7603"W	2377.05	67.025	9.97	9.97	-0.08	
7311.00	90.340	338.810	6274.54	221.10	1016.84	2155.78	1645188.05	14315221.34	39°25'15.5942"N	80°58'59.1770"W	2383.56	64.748	7.10	6.78	-2.13	
7405.00	89.290	339.280	6274.85	315.08	1104.62	2122.16	1645154.45	14315309.09	39°25'16.4618"N	80°58'59.6051"W	2392.44	62.502	1.22	-1.12	0.50	



Actual Wellpath Report

Hodge Unit 1H AWP Proj: 21065'

Page 5 of 12



REFERENCE WELLPATH IDENTIFICATION			
Operator	ANTERO RESOURCES CORPORATION	Well	Hodge Unit 1H
Field	Tyler	API	47-095-02711-0000
Facility	Gorrell Pad	Wellbore	Hodge Unit 1H AWB
Slot	Slot #07		

WELLPATH DATA (232 stations)																
MD [ft]	Inclination [°]	Azimuth [°]	TVD [ft]	Vert Sect [ft]	North [ft]	East [ft]	Grid East [US ft]	Grid North [US ft]	Latitude	Longitude	Closure Dist [ft]	Closure Dir [°]	DLS [°/100ft]	Build Rate [°/100ft]	Turn Rate [°/100ft]	Comments
7500.00	89.540	341.060	6275.82	410.07	1193.98	2089.94	1645122.24	14315398.41	39°25'17.3451"N	80°59'0.0155"W	2406.95	60.261	1.89	0.26	1.87	
7594.00	89.260	339.440	6276.80	504.07	1282.45	2058.17	1645090.49	14315486.84	39°25'18.2195"N	80°59'0.4200"W	2425.03	58.073	1.75	-0.30	-1.72	
7689.00	88.520	339.060	6278.64	599.04	1371.27	2024.52	1645056.85	14315575.62	39°25'19.0974"N	80°59'0.8486"W	2445.21	55.889	0.88	-0.78	-0.40	
7784.00	88.860	339.540	6280.81	694.00	1460.11	1990.95	1645023.29	14315664.43	39°25'19.9755"N	80°59'1.2762"W	2468.97	53.745	0.62	0.36	0.51	
7879.00	89.750	340.150	6281.96	788.99	1549.28	1958.22	1644990.57	14315753.57	39°25'20.8569"N	80°59'1.6931"W	2496.98	51.650	1.14	0.94	0.64	
7973.00	89.660	337.720	6282.45	882.97	1636.99	1924.44	1644956.80	14315841.25	39°25'21.7239"N	80°59'2.1234"W	2526.50	49.614	2.59	-0.10	-2.59	
8163.00	90.370	339.280	6282.40	1072.89	1813.77	1854.81	1644887.20	14316017.95	39°25'23.4711"N	80°59'3.0103"W	2594.24	45.641	0.90	0.37	0.82	
8257.00	89.970	337.360	6282.12	1166.84	1901.11	1820.08	1644852.49	14316105.26	39°25'24.3345"N	80°59'3.4526"W	2631.91	43.753	2.09	-0.43	-2.04	
8352.00	89.940	338.080	6282.19	1261.76	1989.02	1784.06	1644816.49	14316193.13	39°25'25.2034"N	80°59'3.9113"W	2671.91	41.891	0.76	-0.03	0.76	
8446.00	92.520	338.390	6280.18	1355.68	2076.29	1749.22	1644781.66	14316280.37	39°25'26.0660"N	80°59'4.3551"W	2714.91	40.113	2.76	2.74	0.33	
8541.00	89.140	339.080	6278.80	1450.63	2164.80	1714.77	1644747.23	14316368.84	39°25'26.9408"N	80°59'4.7939"W	2761.67	38.383	3.63	-3.56	0.73	
8636.00	89.780	337.340	6279.70	1545.57	2253.01	1679.51	1644711.98	14316457.01	39°25'27.8126"N	80°59'5.2430"W	2810.12	36.703	1.95	0.67	-1.83	
8730.00	91.420	339.890	6278.71	1639.53	2340.52	1645.24	1644677.72	14316544.49	39°25'28.6776"N	80°59'5.6795"W	2860.92	35.105	3.23	1.74	2.71	
8825.00	90.090	338.470	6277.46	1734.50	2429.30	1611.48	1644643.97	14316633.24	39°25'29.5552"N	80°59'6.1096"W	2915.20	33.558	2.05	-1.40	-1.49	
8920.00	89.910	338.260	6277.46	1829.46	2517.61	1576.46	1644608.96	14316721.51	39°25'30.4280"N	80°59'6.5557"W	2970.45	32.054	0.29	-0.19	-0.22	
9014.00	89.420	336.310	6278.01	1923.34	2604.31	1540.16	1644572.68	14316808.18	39°25'31.2850"N	80°59'7.0181"W	3025.65	30.600	2.14	-0.52	-2.07	
9109.00	89.750	336.210	6278.70	2018.13	2691.27	1501.92	1644534.45	14316895.10	39°25'32.1445"N	80°59'7.5052"W	3082.00	29.165	0.36	0.35	-0.11	
9204.00	89.660	336.170	6279.19	2112.91	2778.19	1463.56	1644496.12	14316981.98	39°25'33.0036"N	80°59'7.9938"W	3140.12	27.781	0.10	-0.09	-0.04	
9298.00	92.220	342.680	6277.64	2206.83	2866.12	1430.55	1644463.12	14317069.88	39°25'33.8728"N	80°59'8.4143"W	3203.30	26.525	7.44	2.72	6.93	
9393.00	90.220	339.140	6275.62	2301.78	2955.86	1399.50	1644432.07	14317159.58	39°25'34.7597"N	80°59'8.8099"W	3270.43	25.336	4.28	-2.11	-3.73	
9487.00	90.120	341.900	6275.34	2395.77	3044.47	1368.15	1644400.74	14317248.15	39°25'35.6356"N	80°59'9.2091"W	3337.76	24.199	2.94	-0.11	2.94	
9582.00	89.970	342.920	6275.27	2490.69	3135.03	1339.44	1644372.04	14317338.68	39°25'36.5306"N	80°59'9.5748"W	3409.18	23.135	1.09	-0.16	1.07	
9677.00	89.910	340.370	6275.37	2585.65	3225.18	1309.53	1644342.14	14317428.80	39°25'37.4217"N	80°59'9.9558"W	3480.90	22.099	2.68	-0.06	-2.68	
9771.00	89.510	342.380	6275.84	2679.62	3314.26	1279.51	1644312.14	14317517.83	39°25'38.3021"N	80°59'10.3382"W	3552.67	21.110	2.18	-0.43	2.14	
9866.00	90.520	343.110	6275.82	2774.51	3404.98	1251.33	1644283.97	14317608.52	39°25'39.1988"N	80°59'10.6971"W	3627.63	20.178	1.31	1.06	0.77	
9960.00	90.030	338.400	6275.37	2868.48	3493.70	1220.36	1644253.01	14317697.21	39°25'40.0757"N	80°59'11.0917"W	3700.70	19.254	5.04	-0.52	-5.01	
10055.00	90.520	343.450	6274.91	2963.43	3583.45	1189.32	1644221.98	14317786.92	39°25'40.9629"N	80°59'11.4870"W	3775.66	18.361	5.34	0.52	5.32	
10150.00	89.690	342.230	6274.74	3058.32	3674.22	1161.29	1644193.97	14317877.65	39°25'41.8600"N	80°59'11.8440"W	3853.38	17.540	1.55	-0.87	-1.28	
10244.00	91.780	341.940	6273.53	3152.25	3763.65	1132.38	1644165.07	14317967.05	39°25'42.7439"N	80°59'12.2123"W	3930.31	16.745	2.24	2.22	-0.31	
10339.00	89.720	340.880	6272.29	3247.21	3853.68	1102.10	1644134.80	14318057.04	39°25'43.6338"N	80°59'12.5980"W	4008.18	15.960	2.44	-2.17	-1.12	



Actual Wellpath Report

Hodge Unit 1H AWP Proj: 21065'

Page 6 of 12



REFERENCE WELLPATH IDENTIFICATION

Operator	ANTERO RESOURCES CORPORATION	Well	Hodge Unit 1H
Field	Tyler	API	47-095-02711-0000
Facility	Gorrell Pad	Wellbore	Hodge Unit 1H AWB
Slot	Slot #07		

WELLPATH DATA (232 stations)

MD (ft)	Inclination [°]	Azimuth [°]	TVD (ft)	Vert Sect (ft)	North (ft)	East (ft)	Grid East [US ft]	Grid North [US ft]	Latitude	Longitude	Closure Dist (ft)	Closure Dir [°]	DLS [°/100ft]	Build Rate [°/100ft]	Turn Rate [°/100ft]	Comments
10434.00	91.050	343.530	6271.65	3342.13	3944.12	1073.07	1644105.78	14318147.45	39°25'44.5277"N	80°59'12.9678"W	4087.49	15.220	3.12	1.40	2.79	
10528.00	89.780	340.400	6270.97	3436.06	4033.49	1043.97	1644076.69	14318236.78	39°25'45.4110"N	80°59'13.3384"W	4166.40	14.511	3.59	-1.35	-3.33	
10623.00	91.050	342.950	6270.28	3531.01	4123.66	1014.11	1644046.84	14318326.91	39°25'46.3022"N	80°59'13.7188"W	4246.53	13.816	3.00	1.34	2.68	
10718.00	89.230	340.710	6270.05	3625.96	4213.91	984.49	1644017.23	14318417.13	39°25'47.1943"N	80°59'14.0962"W	4327.39	13.150	3.04	-1.92	-2.36	
10812.00	92.060	342.070	6268.99	3719.91	4302.98	954.50	1643987.25	14318506.16	39°25'48.0746"N	80°59'14.4782"W	4407.57	12.507	3.34	3.01	1.45	
10907.00	88.920	340.810	6268.18	3814.87	4393.02	924.26	1643957.03	14318596.17	39°25'48.9646"N	80°59'14.6634"W	4489.20	11.881	3.56	-3.31	-1.33	
11002.00	90.740	342.020	6268.46	3909.84	4483.06	893.99	1643926.77	14318686.17	39°25'49.8546"N	80°59'15.2490"W	4571.33	11.278	2.30	1.92	1.27	
11097.00	90.490	342.640	6267.44	4004.76	4573.58	865.15	1643897.95	14318776.65	39°25'50.7492"N	80°59'15.6163"W	4654.68	10.712	0.70	-0.26	0.65	
11191.00	89.970	342.090	6267.06	4098.68	4663.16	836.68	1643869.48	14318866.19	39°25'51.6346"N	80°59'15.9791"W	4737.62	10.172	0.81	-0.55	-0.59	
11286.00	90.400	340.090	6266.75	4193.66	4753.02	805.89	1643838.71	14318956.02	39°25'52.5228"N	80°59'16.3713"W	4820.86	9.623	2.15	0.45	-2.11	
11381.00	90.250	343.530	6266.21	4288.60	4843.26	776.24	1643809.07	14319046.23	39°25'53.4147"N	80°59'16.7490"W	4905.07	9.105	3.62	-0.16	3.62	
11476.00	90.340	338.430	6265.73	4383.56	4933.04	745.29	1643778.13	14319135.97	39°25'54.3022"N	80°59'17.1433"W	4989.03	8.591	5.37	0.09	-5.37	
11571.00	90.090	339.930	6265.37	4478.54	5021.84	711.52	1643744.38	14319224.73	39°25'55.1798"N	80°59'17.5735"W	5071.99	8.064	1.60	-0.26	1.58	
11665.00	90.520	337.330	6264.87	4572.50	5109.37	677.28	1643710.14	14319312.22	39°25'56.0449"N	80°59'18.0098"W	5154.06	7.551	2.80	0.46	-2.77	
11760.00	89.600	338.070	6264.77	4667.42	5197.26	641.23	1643674.11	14319400.08	39°25'56.9136"N	80°59'18.4691"W	5236.67	7.033	1.24	-0.97	0.78	
11855.00	90.550	339.240	6264.64	4762.39	5285.74	606.65	1643639.55	14319488.53	39°25'57.7882"N	80°59'18.9096"W	5320.44	6.547	1.59	1.00	1.23	
11950.00	90.120	339.340	6264.09	4857.38	5374.60	573.06	1643605.96	14319577.35	39°25'58.6665"N	80°59'19.3376"W	5405.06	6.086	0.46	-0.45	0.11	
12045.00	90.000	339.390	6263.99	4952.37	5463.51	539.58	1643572.50	14319666.22	39°25'59.5452"N	80°59'19.7641"W	5490.09	5.640	0.14	-0.13	0.05	
12139.00	90.090	338.610	6263.92	5046.35	5551.26	505.89	1643538.83	14319753.94	39°26'0.4126"N	80°59'20.1933"W	5574.26	5.207	0.84	0.10	-0.83	
12234.00	90.680	337.600	6263.28	5141.29	5639.41	470.46	1643503.42	14319842.05	39°26'1.2838"N	80°59'20.6447"W	5659.00	4.769	1.23	0.62	-1.06	
12329.00	89.480	339.310	6263.14	5236.25	5727.76	435.58	1643468.54	14319930.37	39°26'2.1571"N	80°59'21.0891"W	5744.30	4.349	2.20	-1.26	1.80	
12423.00	91.080	339.240	6262.69	5330.24	5815.68	402.32	1643435.29	14320018.25	39°26'3.0260"N	80°59'21.5129"W	5829.58	3.957	1.70	1.70	-0.07	
12518.00	90.860	339.010	6261.08	5425.21	5904.43	368.47	1643401.46	14320106.96	39°26'3.9033"N	80°59'21.9441"W	5915.91	3.571	0.34	-0.23	-0.24	
12613.00	90.460	339.320	6259.98	5520.19	5993.21	334.68	1643367.69	14320195.71	39°26'4.7808"N	80°59'22.3746"W	6002.55	3.196	0.53	-0.42	0.33	
12708.00	92.770	340.480	6257.31	5615.14	6082.38	302.05	1643335.07	14320284.84	39°26'5.6621"N	80°59'22.7904"W	6089.88	2.843	2.72	2.43	1.22	
12802.00	89.380	337.330	6255.54	5709.08	6170.04	268.23	1643301.26	14320372.47	39°26'6.5285"N	80°59'23.2213"W	6175.87	2.489	4.92	-3.61	-3.35	
12897.00	91.200	340.660	6255.06	5804.05	6258.71	234.19	1643267.23	14320461.10	39°26'7.4049"N	80°59'23.6551"W	6263.09	2.143	3.99	1.92	3.51	
12992.00	89.850	336.430	6254.19	5898.99	6347.10	199.45	1643232.51	14320549.46	39°26'8.2786"N	80°59'24.0977"W	6350.23	1.800	4.67	-1.42	-4.45	
13087.00	90.550	341.030	6253.86	5993.93	6435.61	164.99	1643198.07	14320637.93	39°26'9.1534"N	80°59'24.5367"W	6437.72	1.469	4.90	0.74	4.84	
13181.00	90.120	335.980	6253.31	6087.87	6523.04	130.56	1643163.65	14320725.33	39°26'10.0175"N	80°59'24.9754"W	6524.34	1.147	5.39	-0.46	-5.37	



Actual Wellpath Report

Hodge Unit 1H AWP Proj: 21065'

Page 7 of 12



REFERENCE WELLPATH IDENTIFICATION			
Operator	ANTERO RESOURCES CORPORATION	Well	Hodge Unit 1H
Field	Tyler	API	47-095-02711-0000
Facility	Gorrell Pad	Wellbore	Hodge Unit 1H AWB
Slot	Slot #07		

WELLPATH DATA (232 stations)																
MD (ft)	Inclination (°)	Azimuth (°)	TVD (ft)	Vert Sect (ft)	North (ft)	East (ft)	Grid East (US ft)	Grid North (US ft)	Latitude	Longitude	Closure Dist (ft)	Closure Dir (°)	DLS ("/100ft)	Build Rate ("/100ft)	Turn Rate ("/100ft)	Comments
13276.00	90.090	338.990	6253.13	6182.76	6610.79	94.19	1643127.29	14320813.04	39°26'10.8848"N	80°59'25.4388"W	6611.46	0.816	3.17	-0.03	3.17	
13371.00	89.660	336.790	6253.34	6277.68	6698.79	58.43	1643091.55	14320901.01	39°26'11.7547"N	80°59'25.8944"W	6699.05	0.500	2.36	-0.45	-2.32	
13466.00	91.480	338.530	6252.40	6372.59	6786.65	22.33	1643055.46	14320988.83	39°26'12.6231"N	80°59'26.3545"W	6786.69	0.189	2.65	1.92	1.83	
13560.00	89.290	338.020	6251.76	6466.53	6873.97	-12.46	1643020.68	14321076.12	39°26'13.4861"N	80°59'26.7978"W	6873.98	359.896	2.39	-2.33	-0.54	
13655.00	92.340	339.870	6250.41	6561.49	6962.60	-46.58	1642986.58	14321164.71	39°26'14.3621"N	80°59'27.2325"W	6962.76	359.617	3.75	3.21	1.95	
13750.00	88.890	339.350	6249.39	6656.47	7051.63	-79.68	1642953.50	14321253.71	39°26'15.2421"N	80°59'27.6542"W	7052.08	359.353	3.67	-3.63	-0.55	
13845.00	92.280	341.190	6248.42	6751.44	7141.03	-111.74	1642921.45	14321343.07	39°26'16.1257"N	80°59'28.0627"W	7141.91	359.104	4.06	3.57	1.94	
13939.00	89.630	339.170	6246.86	6845.42	7229.44	-143.60	1642889.59	14321431.44	39°26'16.9995"N	80°59'28.4688"W	7230.86	358.862	3.54	-2.82	-2.15	
14034.00	91.260	338.900	6246.12	6940.39	7318.14	-177.59	1642855.62	14321520.11	39°26'17.8763"N	80°59'28.9018"W	7320.30	358.610	1.74	1.72	-0.28	
14129.00	90.950	338.720	6244.29	7035.35	7406.70	-211.92	1642821.30	14321608.64	39°26'18.7516"N	80°59'29.3393"W	7409.74	358.361	0.38	-0.33	-0.19	
14224.00	91.350	339.440	6242.38	7130.32	7495.42	-245.84	1642787.40	14321697.32	39°26'19.6284"N	80°59'29.7715"W	7499.45	358.121	0.87	0.42	0.76	
14319.00	89.780	340.230	6241.44	7225.31	7584.59	-278.58	1642754.67	14321786.45	39°26'20.5098"N	80°59'30.1887"W	7589.71	357.896	1.85	-1.65	0.83	
14414.00	91.660	338.100	6240.25	7320.28	7673.36	-312.37	1642720.90	14321875.19	39°26'21.3872"N	80°59'30.6192"W	7679.72	357.669	2.99	1.98	-2.24	
14508.00	90.460	339.970	6238.51	7414.24	7761.12	-345.99	1642687.29	14321962.91	39°26'22.2546"N	80°59'31.0477"W	7768.83	357.447	2.36	-1.28	1.99	
14603.00	89.820	339.720	6238.28	7509.24	7850.30	-378.72	1642654.57	14322052.06	39°26'23.1360"N	80°59'31.4648"W	7859.43	357.238	0.72	-0.67	-0.26	
14698.00	89.780	340.450	6238.61	7604.24	7939.62	-411.08	1642622.22	14322141.34	39°26'24.0188"N	80°59'31.8771"W	7950.26	357.036	0.77	-0.04	0.77	
14793.00	90.400	340.600	6238.46	7699.24	8029.18	-442.76	1642590.56	14322230.87	39°26'24.9040"N	80°59'32.2807"W	8041.38	356.844	0.67	0.65	0.16	
14888.00	91.510	341.310	6236.88	7794.21	8118.97	-473.75	1642559.58	14322320.62	39°26'25.7915"N	80°59'32.6757"W	8132.78	356.661	1.39	1.17	0.75	
14982.00	89.020	341.840	6236.44	7888.17	8208.14	-503.46	1642529.88	14322409.75	39°26'26.6728"N	80°59'33.0542"W	8223.57	356.490	2.71	-2.65	0.56	
15077.00	92.280	340.780	6235.37	7983.13	8298.11	-533.89	1642499.46	14322499.69	39°26'27.5621"N	80°59'33.4421"W	8315.27	356.319	3.61	3.43	-1.12	
15172.00	89.230	341.030	6234.11	8078.10	8387.87	-564.96	1642468.40	14322589.41	39°26'28.4492"N	80°59'33.8380"W	8406.87	356.147	3.22	-3.21	0.26	
15267.00	91.450	340.150	6233.55	8173.09	8477.46	-596.53	1642436.85	14322678.96	39°26'29.3347"N	80°59'34.2403"W	8498.42	355.975	2.51	2.34	-0.93	
15361.00	89.290	341.510	6232.94	8267.07	8566.24	-627.40	1642406.00	14322767.71	39°26'30.2121"N	80°59'34.6336"W	8589.18	355.811	2.72	-2.30	1.45	
15456.00	89.910	340.190	6233.61	8362.05	8655.98	-658.56	1642374.85	14322857.41	39°26'31.0991"N	80°59'35.0307"W	8680.99	355.649	1.54	0.65	-1.39	
15551.00	92.060	342.320	6231.97	8457.01	8745.92	-689.08	1642344.34	14322947.31	39°26'31.9880"N	80°59'35.4196"W	8773.02	355.495	3.19	2.26	2.24	
15645.00	89.780	341.250	6230.46	8550.95	8835.19	-718.46	1642314.97	14323036.54	39°26'32.8703"N	80°59'35.7940"W	8864.35	355.351	2.68	-2.43	-1.14	
15740.00	92.280	340.090	6228.76	8645.92	8924.81	-749.89	1642283.55	14323126.13	39°26'33.7561"N	80°59'36.1946"W	8956.26	355.197	2.90	2.63	-1.22	
15835.00	89.690	341.440	6227.12	8740.89	9014.48	-781.18	1642252.27	14323215.77	39°26'34.6424"N	80°59'36.5934"W	9048.27	355.047	3.07	-2.73	1.42	
15930.00	91.110	342.210	6226.46	8835.84	9104.74	-810.81	1642222.65	14323305.99	39°26'35.5345"N	80°59'36.9710"W	9140.77	354.911	1.70	1.49	0.81	
16024.00	89.970	342.140	6225.57	8929.77	9194.22	-839.59	1642193.89	14323395.43	39°26'36.4189"N	80°59'37.3376"W	9232.47	354.782	1.22	-1.21	-0.07	



Actual Wellpath Report

Hodge Unit 1H AWP Proj: 21065'

Page 8 of 12



REFERENCE WELLPATH IDENTIFICATION				
Operator	ANTERO RESOURCES CORPORATION		Well	Hodge Unit 1H
Field	Tyler		API	47-095-02711-0000
Facility	Gorrell Pad		Wellbore	Hodge Unit 1H AWB
Slot	Slot #07			

WELLPATH DATA (232 stations)																
MD	Inclination	Azimuth	TVD	Vert Sect	North	East	Grid East	Grid North	Latitude	Longitude	Closure Dist	Closure Dir	DLS	Build Rate	Turn Rate	Comments
(ft)	(°)	(°)	(ft)	(ft)	(ft)	(ft)	(US ft)	(US ft)			(ft)	(°)	(°/100ft)	(°/100ft)	(°/100ft)	
16119.00	90.490	341.760	6225.19	9024.71	9284.54	-869.02	1642164.47	14323485.72	39°26'37.3116"N	80°59'37.7127"W	9325.12	354.653	0.68	0.55	-0.40	
16213.00	90.680	341.280	6224.23	9118.68	9373.69	-898.82	1642134.69	14323574.83	39°26'38.1927"N	80°59'38.0924"W	9416.68	354.523	0.55	0.20	-0.51	
16308.00	90.250	340.570	6223.46	9213.66	9463.47	-929.86	1642103.65	14323664.58	39°26'39.0901"N	80°59'38.4881"W	9509.04	354.388	0.87	-0.45	-0.75	
16402.00	89.940	339.730	6223.31	9307.66	9551.88	-961.78	1642071.75	14323752.95	39°26'39.9540"N	80°59'38.8949"W	9600.18	354.250	0.95	-0.33	-0.89	
16497.00	90.770	340.850	6222.72	9402.66	9641.31	-993.82	1642039.72	14323842.35	39°26'40.8379"N	80°59'39.3032"W	9692.40	354.115	1.47	0.87	1.18	
16592.00	90.920	341.470	6221.32	9497.63	9731.21	-1024.49	1642009.06	14323932.21	39°26'41.7264"N	80°59'39.6941"W	9784.99	353.990	0.67	0.16	0.65	
16686.00	90.860	342.200	6219.86	9591.57	9820.52	-1053.79	1641979.77	14324021.48	39°26'42.6090"N	80°59'40.0675"W	9876.90	353.875	0.78	-0.06	0.78	
16781.00	90.150	341.760	6219.02	9686.52	9910.85	-1083.18	1641950.40	14324111.78	39°26'43.5019"N	80°59'40.4420"W	9969.87	353.763	0.88	-0.75	-0.46	
16876.00	90.920	341.950	6218.13	9781.47	10001.12	-1112.76	1641920.82	14324202.01	39°26'44.3941"N	80°59'40.8191"W	10062.84	353.651	0.83	0.81	0.20	
16971.00	90.180	340.560	6217.22	9876.44	10091.08	-1143.29	1641890.31	14324291.93	39°26'45.2832"N	80°59'41.2081"W	10155.64	353.536	1.66	-0.78	-1.46	
17065.00	89.820	341.570	6217.22	9970.42	10179.99	-1173.79	1641859.82	14324380.81	39°26'46.1620"N	80°59'41.5968"W	10247.44	353.423	1.14	-0.38	1.07	
17160.00	89.720	340.220	6217.60	10065.41	10269.76	-1204.88	1641828.74	14324470.54	39°26'47.0492"N	80°59'41.9931"W	10340.19	353.308	1.42	-0.11	-1.42	
17255.00	89.780	341.220	6218.02	10160.40	10359.43	-1236.25	1641797.39	14324560.17	39°26'47.9354"N	80°59'42.3929"W	10432.93	353.195	1.05	0.06	1.05	
17350.00	90.000	340.120	6218.20	10255.39	10449.07	-1267.70	1641765.95	14324649.78	39°26'48.8214"N	80°59'42.7937"W	10525.69	353.083	1.18	0.23	-1.16	
17444.00	90.920	339.500	6217.44	10349.39	10537.29	-1300.14	1641733.52	14324737.96	39°26'49.6934"N	80°59'43.2071"W	10617.19	352.966	1.18	0.98	-0.66	
17539.00	90.800	341.690	6216.02	10444.37	10626.88	-1331.70	1641701.98	14324827.51	39°26'50.5788"N	80°59'43.6093"W	10709.99	352.857	2.31	-0.13	2.31	
17634.00	90.120	342.730	6215.26	10539.30	10717.33	-1360.72	1641672.97	14324917.93	39°26'51.4728"N	80°59'43.9793"W	10803.37	352.764	1.31	-0.72	1.09	
17729.00	90.120	341.130	6215.06	10634.24	10807.64	-1390.19	1641643.51	14325008.21	39°26'52.3654"N	80°59'44.3548"W	10896.68	352.670	1.68	0.00	-1.68	
17823.00	90.520	339.100	6214.53	10728.24	10896.03	-1422.16	1641611.56	14325096.56	39°26'53.2390"N	80°59'44.7623"W	10988.45	352.564	2.20	0.43	-2.16	
17918.00	90.550	339.240	6213.64	10823.22	10984.82	-1455.94	1641577.79	14325185.31	39°26'54.1166"N	80°59'45.1928"W	11080.88	352.450	0.15	0.03	0.15	
18012.00	90.400	339.160	6212.86	10917.21	11072.69	-1489.31	1641544.42	14325273.15	39°26'54.9850"N	80°59'45.6183"W	11172.40	352.339	0.18	-0.16	-0.09	
18107.00	89.260	339.430	6213.15	11012.20	11161.55	-1522.90	1641510.85	14325361.97	39°26'55.8633"N	80°59'46.0464"W	11264.96	352.230	1.23	-1.20	0.28	
18201.00	89.420	339.530	6214.23	11106.18	11249.58	-1555.85	1641477.92	14325449.97	39°26'56.7334"N	80°59'46.4663"W	11356.66	352.126	0.20	0.17	0.11	
18391.00	89.630	339.390	6215.80	11296.17	11427.49	-1622.51	1641411.28	14325527.81	39°26'58.4918"N	80°59'47.3160"W	11442.10	351.919	0.13	0.11	-0.07	
18486.00	93.050	338.730	6213.58	11391.11	11516.18	-1656.45	1641377.36	14325716.46	39°26'59.3684"N	80°59'47.7486"W	11634.70	351.815	3.67	3.60	-0.69	
18580.00	88.520	339.060	6212.30	11485.06	11603.85	-1690.28	1641343.54	14325804.09	39°27'0.2348"N	80°59'48.1799"W	11726.31	351.712	4.83	-4.82	0.35	
18675.00	90.620	338.860	6213.01	11580.03	11692.50	-1724.39	1641309.45	14325892.71	39°27'1.1111"N	80°59'48.6146"W	11818.98	351.611	2.22	2.21	-0.21	
18865.00	90.860	337.610	6210.55	11769.92	11868.94	-1794.83	1641239.03	14326069.08	39°27'2.8549"N	80°59'49.5125"W	12003.88	351.401	0.67	0.13	-0.66	
18959.00	90.800	340.320	6209.19	11863.88	11956.66	-1828.57	1641205.31	14326156.76	39°27'3.7219"N	80°59'49.9425"W	12095.68	351.305	2.88	-0.06	2.88	
19054.00	89.600	339.160	6208.86	11958.87	12045.78	-1861.46	1641172.43	14326245.85	39°27'4.6027"N	80°59'50.3618"W	12188.76	351.215	1.76	-1.26	-1.22	



Actual Wellpath Report

Hodge Unit 1H AWP Proj: 21065'

Page 9 of 12



REFERENCE WELLPATH IDENTIFICATION			
Operator	ANTERO RESOURCES CORPORATION	Well	Hodge Unit 1H
Field	Tyler	API	47-095-02711-0000
Facility	Gorrell Pad	Wellbore	Hodge Unit 1H AWB
Slot	Slot #07		

WELLPATH DATA (232 stations) † = interpolated, ‡ = extrapolated station																
MD (ft)	Inclination (°)	Azimuth (°)	TVD (ft)	Vert Sect (ft)	North (ft)	East (ft)	Grid East (US ft)	Grid North (US ft)	Latitude	Longitude	Closure Dist (ft)	Closure Dir (°)	DLS (°/100ft)	Build Rate (°/100ft)	Turn Rate (°/100ft)	Comments
19149.00	89.420	340.110	6209.67	12053.87	12134.84	-1894.52	1641139.38	14326334.87	39°27'5.4829"N	80°59'50.7832"W	12281.83	351.126	1.02	-0.19	1.00	
19243.00	90.000	337.910	6210.15	12147.84	12222.59	-1928.19	1641105.73	14326422.59	39°27'6.3502"N	80°59'51.2124"W	12373.75	351.035	2.42	0.62	-2.34	
19338.00	92.650	341.680	6207.95	12242.79	12311.70	-1960.98	1641072.95	14326511.66	39°27'7.2309"N	80°59'51.6304"W	12466.89	350.950	4.85	2.79	3.97	
19433.00	89.230	337.940	6206.39	12337.75	12400.82	-1993.76	1641040.18	14326600.74	39°27'8.1117"N	80°59'52.0482"W	12560.07	350.866	5.33	-3.60	-3.94	
19528.00	90.980	339.390	6206.22	12432.71	12489.30	-2028.32	1641005.64	14326689.19	39°27'8.9862"N	80°59'52.4887"W	12652.93	350.775	2.39	1.84	1.53	
19622.00	89.970	340.340	6205.44	12526.71	12577.55	-2060.67	1640973.29	14326777.41	39°27'9.8585"N	80°59'52.9012"W	12745.24	350.695	1.48	-1.07	1.01	
19717.00	90.400	339.250	6205.13	12621.70	12666.70	-2093.48	1640940.50	14326866.52	39°27'10.7396"N	80°59'53.3194"W	12838.54	350.615	1.23	0.45	-1.15	
19811.00	91.940	338.680	6203.21	12715.66	12754.42	-2127.22	1640906.78	14326954.20	39°27'11.6065"N	80°59'53.7494"W	12930.59	350.531	1.75	1.64	-0.61	
19906.00	92.000	338.990	6199.95	12810.58	12842.96	-2161.50	1640872.51	14327042.71	39°27'12.4816"N	80°59'54.1864"W	13023.58	350.447	0.33	0.06	0.33	
20001.00	90.180	338.910	6198.14	12905.54	12931.60	-2195.61	1640838.41	14327131.31	39°27'13.3577"N	80°59'54.6213"W	13116.67	350.364	1.92	-1.92	-0.08	
20096.00	90.460	339.250	6197.61	13000.53	13020.33	-2229.53	1640804.51	14327220.01	39°27'14.2347"N	80°59'55.0537"W	13209.84	350.283	0.46	0.29	0.36	
20190.00	90.460	339.100	6196.86	13094.51	13108.19	-2262.95	1640771.10	14327307.83	39°27'15.1030"N	80°59'55.4797"W	13302.09	350.205	0.16	0.00	-0.16	
20285.00	90.490	339.550	6196.07	13189.50	13197.07	-2296.49	1640737.57	14327396.67	39°27'15.9815"N	80°59'55.9073"W	13395.39	350.129	0.47	0.03	0.47	
20379.00	90.280	339.620	6195.44	13283.50	13285.16	-2329.28	1640704.80	14327484.73	39°27'16.8521"N	80°59'56.3253"W	13487.81	350.055	0.24	-0.22	0.07	
20474.00	90.490	339.570	6194.80	13378.49	13374.20	-2362.40	1640671.69	14327573.73	39°27'17.7321"N	80°59'56.7475"W	13581.24	349.983	0.23	0.22	-0.05	
20569.00	90.460	339.250	6194.01	13473.48	13463.13	-2395.81	1640638.30	14327662.63	39°27'18.6111"N	80°59'57.1734"W	13674.64	349.910	0.34	-0.03	-0.34	
20663.00	90.400	339.400	6193.31	13567.47	13551.07	-2428.99	1640605.12	14327750.53	39°27'19.4802"N	80°59'57.5965"W	13767.05	349.838	0.17	-0.06	0.16	
20758.00	90.430	339.510	6192.62	13662.46	13640.03	-2462.33	1640571.80	14327839.45	39°27'20.3594"N	80°59'58.0215"W	13860.50	349.767	0.12	0.03	0.12	
20853.00	90.550	339.300	6191.80	13757.45	13728.95	-2495.75	1640538.40	14327928.34	39°27'21.2383"N	80°59'58.4475"W	13953.96	349.697	0.25	0.13	-0.22	
20947.00	90.310	339.350	6191.10	13851.44	13816.90	-2528.94	1640505.22	14328016.25	39°27'22.1075"N	80°59'58.8706"W	14046.43	349.628	0.26	-0.26	0.05	
21040.00	90.430	339.430	6190.50	13944.43	13903.94	-2561.67	1640472.50	14328103.26	39°27'22.9678"N	80°59'59.2879"W	14137.96	349.561	0.16	0.13	0.09	
21065.00‡	90.430	339.430	6190.31	13969.43	13927.35	-2570.45	1640463.72	14328126.66	39°27'23.1992"N	80°59'59.3999"W	14162.57	349.543	0.00	0.00	0.00	Projected MD at TD: 21065'



Actual Wellpath Report

Hodge Unit 1H AWP Proj: 21065'

Page 10 of 12



REFERENCE WELLPATH IDENTIFICATION

Operator	ANTERO RESOURCES CORPORATION	Well	Hodge Unit 1H
Field	Tyler	API	47-095-02711-0000
Facility	Gorrell Pad	Wellbore	Hodge Unit 1H AWB
Slot	Slot #07		

HOLE & CASING SECTIONS - Ref Wellbore: Hodge Unit 1H AWB Ref Wellpath: Hodge Unit 1H AWP Proj: 21065'

String/Diameter	Start MD [ft]	End MD [ft]	Interval [ft]	Start TVD [ft]	End TVD [ft]	Start N/S [ft]	Start E/W [ft]	End N/S [ft]	End E/W [ft]
20in Conductor	30.00	110.00	80.00	30.00	110.00	0.00	0.00	-0.18	-0.03
17.5in Open Hole	110.00	628.00	518.00	110.00	627.99	-0.18	-0.03	-3.55	-0.06
13.375in Casing Surface	30.00	617.80	587.80	30.00	617.79	0.00	0.00	-3.53	-0.06
12.25in Open Hole	628.00	2754.00	2126.00	627.99	2601.40	-3.55	-0.06	69.34	721.34
9.625in Casing Intermediate	30.00	2723.80	2693.80	30.00	2573.72	0.00	0.00	67.24	709.46
8.75in Open Hole	2754.00	5942.00	3188.00	2601.40	5449.51	69.34	721.34	140.12	2145.18
8.5in Open Hole	5942.00	21065.00	15123.00	5449.51	6190.31	140.12	2145.18	13927.35	-2570.45
5.5in Casing Production	30.00	21065.00	21035.00	30.00	6190.31	0.00	0.00	13927.35	-2570.45

TARGETS

Name	TVD [ft]	North [ft]	East [ft]	Grid East [US ft]	Grid North [US ft]	Latitude	Longitude	Shape
Hodge Unit 1H POE Rev-1	6240.00	703.04	2243.85	1645276.09	14314907.67	39°25'12.4926"N	80°58'58.0555"W	point
Hodge Unit 1H BHL Rev-1	6280.00	13952.82	-2560.80	1640473.37	14328152.12	39°27'23.4509"N	80°59'59.2768"W	point
Hodge Unit 1H LP Rev-1	6280.00	924.91	2163.40	1645195.67	14315129.44	39°25'14.6855"N	80°58'59.0801"W	point
Hodge Unit 1H 50' L/R Hard Line	6500.00	7327.93	-158.47	1642874.73	14321529.90	39°26'17.9730"N	80°59'28.6582"W	rectangle
2D Rectangle 14094 x 100.								



Actual Wellpath Report

Hodge Unit 1H AWP Proj: 21065'
Page 11 of 12



REFERENCE WELLPATH IDENTIFICATION			
Operator	ANTERO RESOURCES CORPORATION	Well	Hodge Unit 1H
Field	Tyler	API	47-095-02711-0000
Facility	Gorrell Pad	Wellbore	Hodge Unit 1H AWB
Slot	Slot #07		

WELLPATH COMPOSITION - Ref Wellbore: Hodge Unit 1H AWB Ref Wellpath: Hodge Unit 1H AWP Proj: 21065'					
Start MD (ft)	End MD (ft)	Positional Uncertainty Model	Log Name/Comment	Wellbore	Survey Date
30.00	536.00	Gyrodatta 2015 - GC+WIR+DPIPE	01 Gyrodatta MS Gyro <17-1/2"> (100'-536')	Hodge Unit 1H AWB	26/Feb/2021
536.00	2678.00	BH NaviTrak (2019) (Axial Corr+HRGM)	02 APS EM <12-1/4"> (536')(625'-2678')	Hodge Unit 1H AWB	26/Feb/2021
2678.00	5879.00	BH NaviTrak (2019) (Axial Corr+HRGM)	03 APS EM <8-3/4"> (2678')(2754'-5879')	Hodge Unit 1H AWB	22/Mar/2021
5879.00	21065.00	BH AutoTrak Curve/eXpress (2019) (HRGM, Short spacing)	04 BH AT Curve <8-1/2"> (5879')(5917'-21040')	Hodge Unit 1H AWB	22/Mar/2021



Actual Wellpath Report

Hodge Unit 1H AWP Proj: 21065'

Page 12 of 12



REFERENCE WELLPATH IDENTIFICATION

Operator	ANTERO RESOURCES CORPORATION	Well	Hodge Unit 1H
Field	Tyler	API	47-095-02711-0000
Facility	Gorrell Pad	Wellbore	Hodge Unit 1H AWB
Slot	Slot #07		

COMMENTS

Wellpath general comments

API: 47-095-02711-0000

BH Job #: 110790172

Rig: H&P 519

Duration: 3/5/2021-3/27/2021

Gyrodata MS Gyro <17-1/2"> (100'-536')

APS EM <12-1/4"> (536')(625'-2678')

APS EM <8-3/4"> (2678')(2754'-5879')

BH AT Curve <8-1/2"> (5879')(5917'-21040')

Sycamore: 6623' MD

Middlesex: 6801' MD

Burkett: 7011' MD

Tully: 7057' MD

Marcellus POE: 7069' MD

Projected MD at TD: 21065'