



ANTERO RESOURCES CORPORATION



Location: Tyler County, WV
 Field: Tyler
 Facility: Elk Fork Pad

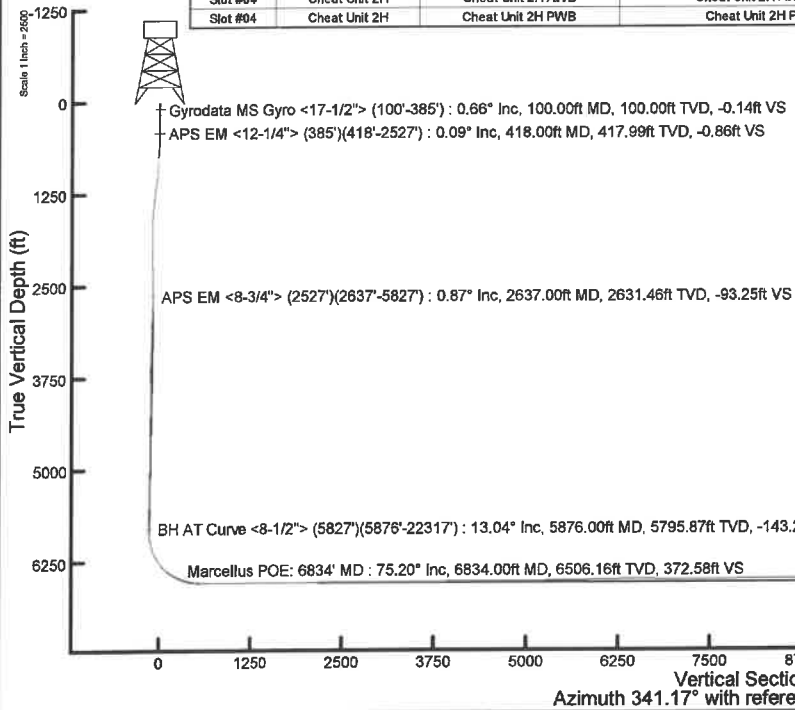
Slot: Slot #04
 Well: Cheat Unit 2H
 Wellbore: Cheat Unit 2H PWB

Plot reference wellpath in Cheat Unit 2H PWP Rev-B.0	Grid System: NAD27 / UTM Zone 17 North, US feet
True vertical depths are referenced to H&P 317 (RKB)	North Reference: Grid north
Reference wellpath measured depths are referenced to H&P 317 (RKB)	Scale: True distance
H&P 317 (RKB) to Mean Sea Level: 1151.5 feet	Coordinates are in feet referenced to Slot
Mean Sea Level to Ground level (At Slot: Slot #04): -1125 feet	Depths are in feet
Offset wellpath MDs are referenced to each path's default MD datum	Created by: antero on 2021-02-17; Database: WA_MPL_EASTERMUS_Data

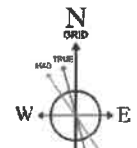
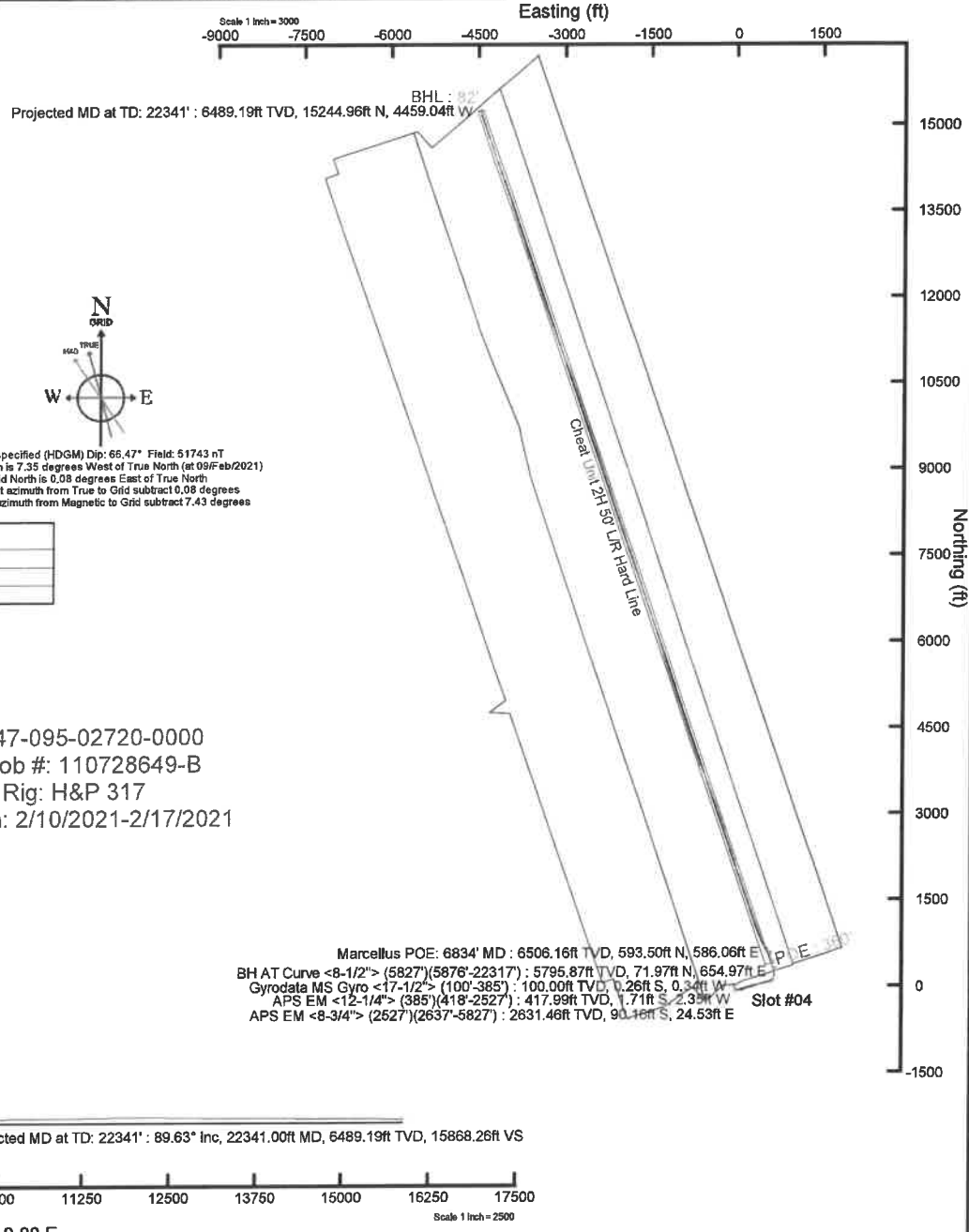
Location Information						
Facility Name	Grid East (US ft)	Grid North (US ft)	Latitude	Longitude		
Elk Fork Pad	1676885.038	14359015.492	39°32'28.3780"N	80°52'14.3200"W		
Slot	Local N (ft)	Local E (ft)	Grid East (US ft)	Grid North (US ft)	Latitude	Longitude
Slot #04	1.34	14.96	1676889.990	14359019.830	39°32'28.3910"N	80°52'14.1291"W
Comment Cheat Unit 2H						
H&P 317 (RKB) to Ground level (At Slot: Slot #04) 25.5ft						
Mean Sea Level to Ground level (At Slot: Slot #04) -1125ft						
H&P 317 (RKB) to Mean Sea Level 1151.5ft						

Well Profile Data							
Design Comment	MD (ft)	Inc (")	Az (°)	TVD (ft)	Local N (ft)	Local E (ft)	VS (ft)
Tie On	2527.00	0.520	284.900	2521.47	-90.72	25.73	-94.17
Proj. to Bottom	2804.00	0.520	284.900	2598.47	-90.54	25.05	-93.78
KOP 1	2884.00	0.520	284.900	2678.47	-90.35	24.35	-93.38
End of 3D Arc	3367.58	13.220	74.667	3356.20	-88.78	97.08	-96.44
Curve KOP	5923.15	13.220	74.667	5844.04	85.76	860.71	-132.06
Turn / Avoid NGZ	6287.58	30.000	0.000	6186.65	190.14	701.78	-48.54
POE	6798.52	72.014	333.999	6504.00	558.13	589.15	336.21
Landing Pt.	7023.34	90.000	333.999	6539.00	754.90	492.20	556.64
On AZI	7381.86	90.000	341.169	6539.00	1086.11	355.58	913.21
BHL	22342.38	90.000	341.169	6539.00	15245.89	-4473.26	0.00

Well Data			
Slot	Well	Wellbore	Wellpath
Slot #04	Cheat Unit 2H	Cheat Unit 2H AWP	Cheat Unit 2H AWP Proj: 22341'
Slot #04	Cheat Unit 2H	Cheat Unit 2H PWB	Cheat Unit 2H PWP Rev-B.0



API: 47-095-02720-0000
 BH Job #: 110728649-B
 Rig: H&P 317
 Duration: 2/10/2021-2/17/2021



User specified (HDGM) Dip: 66.47° Field: 51743 nT
 Magnetic North is 7.35 degrees West of True North (at 09/Feb/2021)
 Grid North is 0.08 degrees East of True North
 To correct azimuth from True to Grid subtract 0.08 degrees
 To correct azimuth from Magnetic to Grid subtract 7.43 degrees



Actual Wellpath Report

Cheat Unit 2H AWP Proj: 22341'

Page 1 of 13



REFERENCE WELLPATH IDENTIFICATION			
Operator	ANTERO RESOURCES CORPORATION	Well	Cheat Unit 2H
Field	Tyler	API	47-095-02720-0000
Facility	Elk Fork Pad	Wellbore	Cheat Unit 2H AWB
Slot	Slot #04		

REPORT SETUP INFORMATION			
Projection System	NAD27 / UTM Zone 17 North, US feet	Software System	WellArchitect® 6.0
North Reference	Grid	User	Edsaryar
Scale	0.999602	Report Generated	17/Feb/2021 at 10:45
Convergence at slot	0.08° East	Database	WA_MPL_EASTERNUS_Defn

WELLPATH LOCATION						
	Local coordinates		Grid coordinates		Geographic coordinates	
	North[ft]	East[ft]	Easting[US ft]	Northing[US ft]	Latitude	Longitude
Slot Location	1.34	14.96	1676899.99	14359019.83	39°32'28.3910"N	80°52'14.1291"W
Facility Reference Pt			1676885.04	14359018.49	39°32'28.3780"N	80°52'14.3200"W
Field Reference Pt			0.00	0.00	0°00'0.0000"	85°29'19.3013"W

WELLPATH DATUM			
Calculation method	Minimum curvature	H&P 317 (RKB) to Facility Vertical Datum	1151.50ft
Horizontal Reference Pt	Slot	H&P 317 (RKB) to Mean Sea Level	1151.50ft
Vertical Reference Pt	H&P 317 (RKB)	H&P 317 (RKB) to Ground Level at Slot (Slot #04)	25.50ft
MD Reference Pt	H&P 317 (RKB)	Section Origin	N 0.00, E 0.00 ft
Field Vertical Reference	Mean Sea Level	Section Azimuth	341.17°



Actual Wellpath Report

Cheat Unit 2H AWP Proj: 22341'

Page 2 of 13



REFERENCE WELLPATH IDENTIFICATION

Operator	ANTERO RESOURCES CORPORATION	Well	Cheat Unit 2H
Field	Tyler	API	47-095-02720-0000
Facility	Elk Fork Pad	Wellbore	Cheat Unit 2H AWB
Slot	Slot #04		

WELLPATH DATA (261 stations) † = interpolated, ‡ = extrapolated station

MD (ft)	Inclination (°)	Azimuth (°)	TVD (ft)	Vert Sect (ft)	North (ft)	East (ft)	Grid East (US ft)	Grid North (US ft)	Latitude	Longitude	Closure Dist (ft)	Closure Dir (°)	DLS (°/100ft)	Build Rate (°/100ft)	Turn Rate (°/100ft)	Comments
0.00†	0.000	232.780	0.00	0.00	0.00	0.00	1676899.99	14359019.83	39°32'28.3910"N	80°52'14.1291"W	0.00	0.000	0.00	0.00	0.00	
25.50	0.000	232.780	25.50	0.00	0.00	0.00	1676899.99	14359019.83	39°32'28.3910"N	80°52'14.1291"W	0.00	0.000	0.00	0.00	0.00	
100.00	0.660	232.780	100.00	-0.14	-0.26	-0.34	1676899.65	14359019.57	39°32'28.3885"N	80°52'14.1334"W	0.43	232.780	0.89	0.89	0.00	Gyrodata MS Gyro <17-1/2"> (100'-385')
200.00	0.650	225.310	199.99	-0.56	-1.01	-1.20	1676898.79	14359018.82	39°32'28.3811"N	80°52'14.1444"W	1.57	230.086	0.09	-0.01	-7.47	
300.00	0.280	250.850	299.99	-0.81	-1.49	-1.84	1676898.15	14359018.34	39°32'28.3764"N	80°52'14.1525"W	2.36	231.042	0.42	-0.37	25.54	
385.00	0.330	246.580	384.99	-0.83	-1.65	-2.26	1676897.73	14359018.18	39°32'28.3747"N	80°52'14.1579"W	2.80	233.827	0.06	0.06	-5.02	
418.00	0.090	197.280	417.99	-0.86	-1.71	-2.35	1676897.64	14359018.12	39°32'28.3741"N	80°52'14.1591"W	2.91	233.936	0.85	-0.73	-149.39	APS EM <12-1/4"> (385')(418'-2527')
508.00	1.410	165.890	507.98	-2.02	-2.86	-2.10	1676897.89	14359016.98	39°32'28.3628"N	80°52'14.1560"W	3.55	216.391	1.48	1.47	-34.88	
598.00	2.180	162.990	597.93	-4.84	-5.57	-1.33	1676898.66	14359014.27	39°32'28.3360"N	80°52'14.1462"W	5.72	193.475	0.86	0.86	-3.22	
689.00	3.650	149.420	688.81	-9.40	-9.72	0.65	1676900.64	14359010.12	39°32'28.2950"N	80°52'14.1210"W	9.74	176.194	1.77	1.62	-14.91	
778.00	5.170	141.700	777.55	-15.96	-15.30	4.57	1676904.56	14359004.53	39°32'28.2397"N	80°52'14.0710"W	15.97	163.360	1.83	1.71	-8.67	
868.00	5.630	140.640	867.15	-23.92	-21.90	9.89	1676909.87	14358997.94	39°32'28.1745"N	80°52'14.0033"W	24.03	155.702	0.52	0.51	-1.18	
959.00	5.960	144.210	957.68	-32.62	-29.18	15.48	1676915.46	14358990.66	39°32'28.1024"N	80°52'13.9320"W	33.03	152.055	0.54	0.36	3.92	
1049.00	6.170	140.150	1047.18	-41.60	-36.68	21.31	1676921.29	14358983.16	39°32'28.0282"N	80°52'13.8577"W	42.43	149.845	0.53	0.23	-4.51	
1143.00	7.160	147.480	1140.55	-52.01	-45.50	27.70	1676927.68	14358974.35	39°32'27.9409"N	80°52'13.7763"W	53.27	148.670	1.39	1.05	7.80	
1236.00	7.230	150.710	1232.81	-63.39	-55.49	33.68	1676933.65	14358964.36	39°32'27.8421"N	80°52'13.7002"W	64.91	148.748	0.44	0.08	3.47	
1330.00	7.310	149.110	1326.06	-75.06	-65.78	39.64	1676939.62	14358954.07	39°32'27.7403"N	80°52'13.6243"W	76.80	148.927	0.23	0.09	-1.70	
1423.00	5.680	145.490	1418.46	-85.28	-74.65	45.29	1676945.26	14358945.21	39°32'27.6525"N	80°52'13.5524"W	87.32	148.758	1.81	-1.75	-3.89	
1517.00	3.980	147.730	1512.12	-92.93	-81.25	49.66	1676949.63	14358938.62	39°32'27.5873"N	80°52'13.4966"W	95.22	148.564	1.82	-1.81	2.38	
1611.00	2.900	184.050	1605.96	-98.29	-86.38	51.24	1676951.21	14358933.49	39°32'27.5366"N	80°52'13.4766"W	100.43	149.324	2.53	-1.15	38.64	
1704.00	2.330	227.370	1698.87	-101.22	-90.00	49.68	1676949.65	14358929.86	39°32'27.5008"N	80°52'13.4966"W	102.81	151.102	2.15	-0.61	46.58	
1798.00	2.060	253.140	1792.81	-101.94	-91.79	46.66	1676946.63	14358928.08	39°32'27.4832"N	80°52'13.5352"W	102.97	153.055	1.08	-0.29	27.41	
1891.00	1.850	285.610	1885.75	-101.03	-91.87	43.61	1676943.58	14358928.00	39°32'27.4824"N	80°52'13.5741"W	101.70	154.605	1.20	-0.23	34.91	
1985.00	1.890	265.360	1979.71	-99.79	-91.59	40.61	1676940.58	14358928.28	39°32'27.4853"N	80°52'13.6124"W	100.18	156.089	0.70	0.04	-21.54	
2078.00	2.140	265.020	2072.65	-99.00	-91.86	37.35	1676937.32	14358928.01	39°32'27.4826"N	80°52'13.6540"W	99.16	157.875	0.27	0.27	-0.37	
2172.00	1.840	282.300	2166.59	-97.80	-91.69	34.12	1676934.10	14358928.17	39°32'27.4843"N	80°52'13.6952"W	97.84	159.587	0.71	-0.32	18.38	
2265.00	2.290	273.410	2259.53	-96.32	-91.26	30.81	1676930.79	14358928.60	39°32'27.4886"N	80°52'13.7374"W	96.32	161.345	0.59	0.48	-9.56	
2359.00	0.930	267.930	2353.49	-95.39	-91.18	28.17	1676928.15	14358928.69	39°32'27.4895"N	80°52'13.7711"W	95.43	162.829	1.45	-1.45	-5.83	
2452.00	0.970	286.340	2446.48	-94.72	-90.99	26.66	1676926.64	14358928.88	39°32'27.4914"N	80°52'13.7904"W	94.81	163.666	0.33	0.04	19.80	
2527.00	0.520	284.900	2521.47	-94.17	-90.72	25.73	1676925.71	14358929.15	39°32'27.4940"N	80°52'13.8023"W	94.30	164.168	0.60	-0.60	-1.92	



Actual Wellpath Report

Cheat Unit 2H AWP Proj: 22341'
Page 3 of 13



REFERENCE WELLPATH IDENTIFICATION			
Operator	ANTERO RESOURCES CORPORATION	Well	Cheat Unit 2H
Field	Tyler	API	47-095-02720-0000
Facility	Elk Fork Pad	Wellbore	Cheat Unit 2H AWB
Slot	Slot #04		

WELLPATH DATA (261 stations)																
MD	Inclination	Azimuth	TVD	Vert Sect	North	East	Grid East	Grid North	Latitude	Longitude	Closure Dist	Closure Dir	DLS	Build Rate	Turn Rate	Comments
[ft]	[°]	[°]	[ft]	[ft]	[ft]	[ft]	[US ft]	[US ft]			[ft]	[°]	["/100ft]	["/100ft]	["/100ft]	
2637.00	0.870	301.220	2631.46	-93.25	-90.16	24.53	1676924.51	14358929.71	39°32'27.4996"N	80°52'13.8176"W	93.44	164.780	0.36	0.32	14.84	APS EM <8-3/4' > (2527')(2637'-5827')
2725.00	1.270	118.710	2719.46	-93.46	-90.28	24.81	1676924.79	14358929.59	39°32'27.4984"N	80°52'13.8140"W	93.63	164.632	2.43	0.45	201.69	
2814.00	4.110	117.130	2808.35	-96.48	-92.21	28.52	1676928.50	14358927.66	39°32'27.4793"N	80°52'13.7667"W	96.52	162.814	3.19	3.19	-1.78	
2902.00	4.640	110.430	2896.10	-101.00	-94.89	34.66	1676934.64	14358924.98	39°32'27.4527"N	80°52'13.6884"W	101.02	159.934	0.84	0.60	-7.61	
2991.00	5.750	91.150	2984.74	-104.80	-96.24	42.49	1676942.46	14358923.63	39°32'27.4393"N	80°52'13.5884"W	105.20	156.177	2.31	1.25	-21.66	
3079.00	8.010	76.910	3072.10	-106.92	-94.94	52.87	1676952.84	14358924.93	39°32'27.4520"N	80°52'13.4559"W	108.67	150.885	3.20	2.57	-16.18	
3167.00	8.110	70.280	3159.24	-107.44	-91.45	64.69	1676964.65	14358928.41	39°32'27.4862"N	80°52'13.3050"W	112.02	144.726	1.06	0.11	-7.53	
3256.00	8.240	76.660	3247.33	-107.95	-87.86	76.80	1676976.76	14358932.00	39°32'27.5216"N	80°52'13.1503"W	116.70	138.842	1.03	0.15	7.17	
3344.00	8.930	88.920	3334.35	-110.63	-86.28	89.77	1676989.72	14358933.59	39°32'27.5370"N	80°52'12.9848"W	124.51	133.864	2.22	0.78	13.93	
3433.00	10.680	88.900	3422.05	-115.25	-85.99	104.92	1677004.87	14358933.87	39°32'27.5397"N	80°52'12.7914"W	135.66	129.336	1.97	1.97	-0.02	
3526.00	11.740	81.560	3513.28	-119.58	-84.44	122.90	1677022.84	14358935.43	39°32'27.5548"N	80°52'12.5619"W	149.11	124.490	1.91	1.14	-7.89	
3614.00	12.820	76.270	3599.27	-122.07	-80.80	141.24	1677041.17	14358939.06	39°32'27.5904"N	80°52'12.3277"W	162.72	119.774	1.77	1.23	-6.01	
3703.00	12.700	71.250	3686.07	-122.96	-75.32	160.10	1677060.02	14358944.54	39°32'27.6444"N	80°52'12.0869"W	176.93	115.194	1.25	-0.13	-5.64	
3792.00	12.500	66.910	3772.93	-122.26	-68.39	178.22	1677078.14	14358951.46	39°32'27.7125"N	80°52'11.8554"W	190.89	110.995	1.09	-0.22	-4.88	
3880.00	12.360	67.530	3858.87	-120.95	-61.06	195.68	1677095.60	14358958.80	39°32'27.7848"N	80°52'11.6324"W	204.99	107.329	0.22	-0.16	0.70	
3968.00	13.990	70.520	3944.55	-120.23	-53.91	214.42	1677114.32	14358965.94	39°32'27.8551"N	80°52'11.3932"W	221.09	104.113	2.01	1.85	3.40	
4057.00	16.120	70.810	4030.49	-120.03	-46.26	236.23	1677136.13	14358973.59	39°32'27.9304"N	80°52'11.1146"W	240.72	101.080	2.39	2.39	0.33	
4146.00	15.850	70.960	4116.05	-119.91	-38.24	259.39	1677159.28	14358981.61	39°32'28.0094"N	80°52'10.8188"W	262.19	98.385	0.31	-0.30	0.17	
4234.00	14.650	74.140	4200.95	-120.44	-31.27	281.45	1677181.33	14358988.57	39°32'28.0779"N	80°52'10.5371"W	283.19	96.340	1.66	-1.36	3.61	
4323.00	15.190	74.640	4286.95	-121.73	-25.11	303.52	1677203.39	14358994.73	39°32'28.1385"N	80°52'10.2552"W	304.56	94.729	0.62	0.61	0.56	
4411.00	16.220	74.400	4371.66	-123.12	-18.75	326.48	1677226.34	14359001.09	39°32'28.2010"N	80°52'9.9621"W	327.02	93.287	1.17	1.17	-0.27	
4500.00	15.140	69.870	4457.35	-123.56	-11.41	349.37	1677249.22	14359008.43	39°32'28.2733"N	80°52'9.6699"W	349.55	91.870	1.83	-1.21	-5.09	
4588.00	15.210	70.540	4542.28	-123.17	-3.61	371.04	1677270.88	14359016.23	39°32'28.3501"N	80°52'9.3931"W	371.06	90.557	0.21	0.08	0.76	
4677.00	16.250	74.140	4627.95	-123.69	3.69	394.03	1677293.86	14359023.52	39°32'28.4218"N	80°52'9.0995"W	394.05	89.464	1.60	1.17	4.04	
4765.00	15.360	70.270	4712.63	-124.14	10.99	416.84	1677316.67	14359030.81	39°32'28.4936"N	80°52'8.8081"W	416.99	88.490	1.57	-1.01	-4.40	
4853.00	13.290	72.150	4797.89	-124.13	18.02	437.44	1677337.26	14359037.84	39°32'28.5629"N	80°52'8.5451"W	437.82	87.641	2.41	-2.35	2.14	
4942.00	12.130	79.550	4884.71	-125.67	22.85	456.38	1677356.19	14359042.68	39°32'28.6104"N	80°52'8.3033"W	456.95	87.133	2.24	-1.30	8.31	
5030.00	12.910	80.380	4970.62	-128.59	26.17	475.16	1677374.96	14359045.99	39°32'28.6429"N	80°52'8.0634"W	475.88	86.847	0.91	0.89	0.94	
5119.00	12.030	75.180	5057.52	-130.83	30.21	493.93	1677393.73	14359050.03	39°32'28.6825"N	80°52'7.8238"W	494.86	86.500	1.60	-0.99	-5.84	
5207.00	12.660	74.660	5143.48	-132.06	35.10	512.10	1677411.88	14359054.92	39°32'28.7306"N	80°52'7.5918"W	513.30	86.078	0.73	0.72	-0.59	



Actual Wellpath Report

Cheat Unit 2H AWP Proj: 22341'
Page 4 of 13



REFERENCE WELLPATH IDENTIFICATION			
Operator	ANTERO RESOURCES CORPORATION	Well	Cheat Unit 2H
Field	Tyler	API	47-095-02720-0000
Facility	Elk Fork Pad	Wellbore	Cheat Unit 2H AWB
Slot	Slot #04		

WELLPATH DATA (261 stations) † = interpolated, ‡ = extrapolated station																
MD	Inclination	Azimuth	TVD	Vert Sect	North	East	Grid East	Grid North	Latitude	Longitude	Closure Dist	Closure Dir	DLS	Build Rate	Turn Rate	Comments
(ft)	(°)	(°)	(ft)	(ft)	(ft)	(ft)	(US ft)	(US ft)			(ft)	(°)	("/100ft)	("/100ft)	("/100ft)	
5296.00	11.350	70.620	5230.54	-132.57	40.59	529.77	1677429.55	14359060.41	39°32'28.7846"N	80°52'7.3662"W	531.32	85.618	1.75	-1.47	-4.54	
5384.00	12.560	71.960	5316.63	-132.62	46.43	547.03	1677446.81	14359066.24	39°32'28.8420"N	80°52'7.1457"W	549.00	85.149	1.41	1.38	1.52	
5473.00	11.920	79.130	5403.61	-134.02	51.16	565.26	1677465.03	14359070.97	39°32'28.8885"N	80°52'6.9129"W	567.57	84.829	1.85	-0.72	8.06	
5561.00	13.260	79.890	5489.49	-136.81	54.64	584.12	1677483.88	14359074.45	39°32'28.9227"N	80°52'6.6721"W	586.68	84.656	1.53	1.52	0.86	
5650.00	12.660	80.540	5576.22	-139.95	58.04	603.79	1677503.54	14359077.85	39°32'28.9560"N	80°52'6.4210"W	606.58	84.509	0.69	-0.67	0.73	
5738.00	14.050	77.360	5661.84	-142.67	61.96	623.73	1677523.47	14359081.77	39°32'28.9945"N	80°52'6.1664"W	626.80	84.327	1.79	1.58	-3.61	
5827.00	13.870	70.660	5748.22	-143.74	67.86	644.34	1677544.07	14359087.66	39°32'29.0524"N	80°52'5.9033"W	647.90	83.988	1.83	-0.20	-7.53	
5876.00	13.040	66.960	5795.87	-143.28	71.97	654.97	1677554.70	14359091.77	39°32'29.0929"N	80°52'5.7675"W	658.91	83.730	2.44	-1.69	-7.55	BH AT Curve <8-1/2"> (5827')(5876'-22317')
5962.00	13.570	46.950	5879.61	-138.43	82.66	671.28	1677571.00	14359102.45	39°32'29.1983"N	80°52'5.5591"W	676.35	82.980	5.36	0.62	-23.27	
6051.00	16.880	27.290	5965.53	-125.18	101.29	684.84	1677584.56	14359121.08	39°32'29.3822"N	80°52'5.3856"W	692.29	81.587	6.84	3.72	-22.09	
6139.00	21.310	17.020	6048.69	-103.34	127.95	695.39	1677595.10	14359147.73	39°32'29.6456"N	80°52'5.2505"W	707.06	79.574	6.30	5.03	-11.67	
6228.00	26.090	7.720	6130.19	-72.70	162.84	702.76	1677602.47	14359182.60	39°32'29.9903"N	80°52'5.1558"W	721.38	76.954	6.80	5.37	-10.45	
6316.00	31.700	356.510	6207.26	-33.03	205.16	703.95	1677603.66	14359224.91	39°32'30.4085"N	80°52'5.1397"W	733.24	73.752	8.84	6.37	-12.74	
6365.00†	35.644	352.909	6248.04	-6.62	232.19	701.41	1677601.12	14359251.93	39°32'30.6757"N	80°52'5.1718"W	738.84	71.684	9.02	8.05	-7.35	Sycamore: 6365' MD
6405.00	38.930	350.450	6279.86	17.20	256.16	697.88	1677597.59	14359275.88	39°32'30.9127"N	80°52'5.2163"W	743.41	69.844	9.02	8.22	-6.15	
6493.00	47.310	347.200	6344.04	76.76	315.07	686.11	1677585.82	14359334.78	39°32'31.4951"N	80°52'5.3655"W	754.99	65.335	9.85	9.52	-3.69	
6507.00†	48.453	346.542	6353.43	87.09	325.18	683.75	1677583.46	14359344.88	39°32'31.5951"N	80°52'5.3954"W	757.14	64.565	8.88	8.16	-4.70	Middlesex: 6507' MD
6582.00	54.630	343.370	6400.06	145.66	381.84	668.45	1677568.17	14359401.52	39°32'32.1553"N	80°52'5.5897"W	769.82	60.263	8.88	8.24	-4.23	
6626.00	59.150	341.160	6424.09	182.49	416.93	657.21	1677556.93	14359436.59	39°32'32.5022"N	80°52'5.7325"W	778.30	57.609	11.10	10.27	-5.02	
6661.00†	61.989	340.135	6441.29	212.97	445.68	647.10	1677546.83	14359465.34	39°32'32.7866"N	80°52'5.8609"W	785.73	55.443	8.50	8.11	-2.93	Burkett: 6661' MD
6670.00	62.720	339.880	6445.47	220.94	453.18	644.38	1677544.11	14359472.82	39°32'32.8606"N	80°52'5.8956"W	787.78	54.882	8.50	8.12	-2.83	
6698.00†	64.284	339.034	6457.96	245.99	476.64	635.58	1677535.32	14359496.28	39°32'33.0927"N	80°52'6.0074"W	794.45	53.133	6.21	5.59	-3.02	Tully: 6698' MD
6714.00	65.180	338.560	6464.79	260.45	490.13	630.35	1677530.09	14359509.76	39°32'33.2261"N	80°52'6.0739"W	798.48	52.133	6.21	5.60	-2.96	
6758.00	68.090	337.270	6482.24	300.77	527.55	615.16	1677514.90	14359547.17	39°32'33.5961"N	80°52'6.2671"W	810.39	49.384	7.14	6.61	-2.93	
6834.00†	75.201	335.147	6506.16	372.58	593.50	586.06	1677485.81	14359613.09	39°32'34.2483"N	80°52'6.6374"W	834.09	44.639	9.72	9.36	-2.79	Marcellus POE: 6834' MD
6847.00	76.420	334.800	6509.34	385.11	604.92	580.73	1677480.48	14359624.50	39°32'34.3612"N	80°52'6.7052"W	838.55	43.831	9.72	9.37	-2.67	
6935.00	79.630	334.890	6527.60	470.66	682.83	544.14	1677443.91	14359702.38	39°32'35.1318"N	80°52'7.1708"W	873.12	38.551	3.65	3.65	0.10	
7024.00	86.550	335.310	6538.30	558.46	762.92	506.96	1677406.75	14359782.44	39°32'35.9239"N	80°52'7.6438"W	916.00	33.604	7.79	7.78	0.47	
7112.00	90.490	336.860	6540.57	646.06	843.32	471.31	1677371.11	14359862.81	39°32'36.7190"N	80°52'8.0974"W	966.09	29.200	4.81	4.48	1.76	
7201.00	89.940	337.120	6540.24	734.83	925.24	436.52	1677336.34	14359944.70	39°32'37.5292"N	80°52'8.5400"W	1023.04	25.258	0.68	-0.62	0.29	



Actual Wellpath Report

Cheat Unit 2H AWP Proj: 22341'
Page 5 of 13



REFERENCE WELLPATH IDENTIFICATION			
Operator	ANTERO RESOURCES CORPORATION	Well	Cheat Unit 2H
Field	Tyler	API	47-095-02720-0000
Facility	Elk Fork Pad	Wellbore	Cheat Unit 2H AWB
Slot	Slot #04		

WELLPATH DATA (261 stations)																
MD [ft]	Inclination [°]	Azimuth [°]	TVD [ft]	Vert Sect [ft]	North [ft]	East [ft]	Grid East [US ft]	Grid North [US ft]	Latitude	Longitude	Closure Dist [ft]	Closure Dir [°]	DLS [°/100ft]	Build Rate [°/100ft]	Turn Rate [°/100ft]	Comments
7289.00	90.370	339.750	6540.00	822.72	1007.07	404.18	1677304.01	14360026.50	39°32'38.3384"N	80°52'8.9513"W	1085.15	21.868	3.03	0.49	2.99	
7377.00	89.660	339.090	6539.98	910.68	1089.45	373.25	1677273.09	14360108.85	39°32'39.1530"N	80°52'9.3446"W	1151.62	18.911	1.10	-0.81	-0.75	
7466.00	90.400	339.720	6539.93	999.63	1172.76	341.94	1677241.79	14360192.12	39°32'39.9769"N	80°52'9.7427"W	1221.60	16.255	1.09	0.83	0.71	
7554.00	90.150	340.330	6539.51	1087.61	1255.47	311.88	1677211.74	14360274.80	39°32'40.7947"N	80°52'10.1249"W	1293.63	13.951	0.75	-0.28	0.69	
7643.00	89.780	340.810	6539.56	1176.61	1339.40	282.27	1677182.15	14360358.69	39°32'41.6246"N	80°52'10.5013"W	1368.82	11.901	0.68	-0.42	0.54	
7732.00	89.970	342.010	6539.76	1265.61	1423.75	253.90	1677153.79	14360443.01	39°32'42.4588"N	80°52'10.8619"W	1446.22	10.111	1.37	0.21	1.35	
7820.00	90.620	341.400	6539.30	1353.60	1507.30	226.28	1677126.18	14360526.53	39°32'43.2849"N	80°52'11.2129"W	1524.19	8.538	1.01	0.74	-0.69	
7909.00	89.600	340.060	6539.13	1442.59	1591.31	196.91	1677096.82	14360610.51	39°32'44.1156"N	80°52'11.5863"W	1603.45	7.054	1.89	-1.15	-1.51	
7997.00	90.550	340.800	6539.02	1530.59	1674.23	167.43	1677067.35	14360693.39	39°32'44.9355"N	80°52'11.9610"W	1682.58	5.711	1.37	1.08	0.84	
8086.00	89.940	340.760	6538.64	1619.58	1758.27	138.13	1677038.07	14360777.39	39°32'45.7665"N	80°52'12.3335"W	1763.69	4.492	0.69	-0.69	-0.04	
8174.00	90.400	341.470	6538.38	1707.58	1841.53	109.65	1677009.60	14360860.62	39°32'46.5898"N	80°52'12.6955"W	1844.79	3.408	0.96	0.52	0.81	
8263.00	89.320	337.930	6538.59	1796.54	1924.99	78.78	1676978.74	14360944.05	39°32'47.4151"N	80°52'13.0881"W	1926.60	2.343	4.16	-1.21	-3.98	
8351.00	89.820	342.620	6539.26	1884.50	2007.80	49.09	1676949.06	14361026.82	39°32'48.2339"N	80°52'13.4656"W	2008.40	1.401	5.36	0.57	5.33	
8440.00	90.680	346.570	6538.87	1973.32	2093.58	25.45	1676925.43	14361112.57	39°32'49.0821"N	80°52'13.7657"W	2093.74	0.696	4.54	0.97	4.44	
8528.00	90.520	341.600	6537.94	2061.17	2178.18	1.33	1676901.32	14361197.14	39°32'49.9185"N	80°52'14.0721"W	2178.18	0.035	5.65	-0.18	-5.65	
8617.00	90.250	342.300	6537.35	2150.16	2262.79	-26.25	1676873.75	14361281.72	39°32'50.7552"N	80°52'14.4226"W	2262.95	359.335	0.84	-0.30	0.79	
8705.00	91.140	342.480	6536.28	2238.13	2346.66	-52.87	1676847.14	14361365.55	39°32'51.5845"N	80°52'14.7609"W	2347.26	358.709	1.03	1.01	0.20	
8793.00	89.110	338.260	6536.09	2326.10	2429.53	-82.42	1676817.60	14361448.38	39°32'52.4039"N	80°52'15.1366"W	2430.92	358.057	5.32	-2.31	-4.80	
8882.00	90.860	341.130	6536.11	2415.06	2512.98	-113.30	1676786.73	14361531.81	39°32'53.2291"N	80°52'15.5293"W	2515.54	357.418	3.78	1.97	3.22	
8970.00	89.780	340.180	6535.62	2503.05	2596.01	-142.45	1676757.60	14361614.80	39°32'54.0501"N	80°52'15.8999"W	2599.92	356.859	1.63	-1.23	-1.08	
9059.00	90.950	344.700	6535.05	2592.00	2680.84	-169.30	1676730.76	14361699.60	39°32'54.8889"N	80°52'16.2410"W	2686.18	356.387	5.25	1.31	5.08	
9147.00	90.620	341.770	6533.85	2679.93	2765.08	-194.67	1676705.39	14361783.80	39°32'55.7218"N	80°52'16.5634"W	2771.93	355.973	3.35	-0.37	-3.33	
9236.00	89.080	341.750	6534.08	2768.92	2849.61	-222.53	1676677.55	14361868.30	39°32'56.5576"N	80°52'16.9175"W	2858.28	355.535	1.73	-1.73	-0.02	
9324.00	89.970	341.840	6534.81	2856.91	2933.20	-250.02	1676650.07	14361951.85	39°32'57.3842"N	80°52'17.2669"W	2943.83	355.128	1.02	1.01	0.10	
9413.00	89.660	340.610	6535.10	2945.91	3017.46	-278.67	1676621.44	14362036.08	39°32'58.2173"N	80°52'17.6310"W	3030.30	354.724	1.43	-0.35	-1.38	
9501.00	90.950	340.980	6534.63	3033.90	3100.56	-307.61	1676592.50	14362119.15	39°32'59.0390"N	80°52'17.9991"W	3115.78	354.334	1.53	1.47	0.42	
9590.00	89.600	339.040	6534.20	3122.88	3184.19	-338.03	1676562.09	14362202.75	39°32'59.8660"N	80°52'18.3859"W	3202.08	353.940	2.66	-1.52	-2.18	
9678.00	89.820	337.340	6534.65	3210.76	3265.89	-370.73	1676529.41	14362284.41	39°33'0.6739"N	80°52'18.8018"W	3286.86	353.524	1.95	0.25	-1.93	
9767.00	90.370	339.430	6534.50	3299.64	3348.62	-403.51	1676496.64	14362367.11	39°33'1.4921"N	80°52'19.2188"W	3372.85	353.129	2.43	0.62	2.35	
9855.00	90.550	339.610	6533.79	3387.61	3431.06	-434.30	1676465.86	14362449.52	39°33'2.3072"N	80°52'19.6103"W	3458.44	352.786	0.29	0.20	0.20	



Actual Wellpath Report

Cheat Unit 2H AWP Proj: 22341'

Page 6 of 13



REFERENCE WELLPATH IDENTIFICATION

Operator	ANTERO RESOURCES CORPORATION	Well	Cheat Unit 2H
Field	Tyler	API	47-095-02720-0000
Facility	Elk Fork Pad	Wellbore	Cheat Unit 2H AWB
Slot	Slot #04		

WELLPATH DATA (261 stations)

MD [ft]	Inclination [°]	Azimuth [°]	TVD [ft]	Vert Sect [ft]	North [ft]	East [ft]	Grid East [US ft]	Grid North [US ft]	Latitude	Longitude	Closure Dist [ft]	Closure Dir [°]	DLS [°/100ft]	Build Rate [°/100ft]	Turn Rate [°/100ft]	Comments
9944.00	90.220	338.210	6533.19	3476.53	3514.09	-466.32	1676433.85	14362532.52	39°33'3.1283"N	80°52'20.0176"W	3544.90	352.441	1.62	-0.37	-1.57	
10032.00	91.170	340.360	6532.13	3564.47	3596.39	-497.45	1676402.74	14362614.78	39°33'3.9422"N	80°52'20.4135"W	3630.63	352.125	2.67	1.08	2.44	
10121.00	90.120	337.300	6531.12	3653.38	3679.37	-529.58	1676370.62	14362697.73	39°33'4.7627"N	80°52'20.8222"W	3717.29	351.810	3.63	-1.18	-3.44	
10209.00	90.340	335.000	6530.77	3741.04	3759.85	-565.16	1676335.06	14362778.17	39°33'5.5586"N	80°52'21.2750"W	3802.09	351.452	2.63	0.25	-2.61	
10297.00	90.580	334.290	6530.06	3828.46	3839.37	-602.84	1676297.39	14362857.66	39°33'6.3450"N	80°52'21.7546"W	3886.41	351.077	0.85	0.27	-0.81	
10386.00	90.860	336.330	6528.95	3916.99	3920.22	-640.01	1676260.23	14362938.48	39°33'7.1447"N	80°52'22.2277"W	3972.12	350.728	2.31	0.31	2.29	
10474.00	90.920	339.700	6527.58	4004.83	4001.80	-672.95	1676227.31	14363020.03	39°33'7.9514"N	80°52'22.6466"W	4057.99	350.454	3.83	0.07	3.83	
10563.00	89.630	338.780	6527.15	4093.77	4085.02	-704.49	1676195.78	14363103.21	39°33'8.7743"N	80°52'23.0479"W	4145.32	350.215	1.78	-1.45	-1.03	
10651.00	90.650	342.780	6526.94	4181.75	4168.10	-733.46	1676166.83	14363186.26	39°33'9.5958"N	80°52'23.4161"W	4232.14	350.020	4.69	1.16	4.55	
10740.00	90.000	342.640	6526.43	4270.72	4253.07	-759.91	1676140.39	14363271.20	39°33'10.4360"N	80°52'23.7523"W	4320.43	349.870	0.75	-0.73	-0.16	
10828.00	90.250	342.030	6526.24	4358.70	4336.92	-786.61	1676113.69	14363355.02	39°33'11.2651"N	80°52'24.0917"W	4407.68	349.720	0.75	0.28	-0.69	
10917.00	90.830	342.660	6525.40	4447.68	4421.73	-813.60	1676086.71	14363439.79	39°33'12.1036"N	80°52'24.4347"W	4495.96	349.574	0.96	0.65	0.71	
11005.00	90.120	341.800	6524.67	4535.66	4505.52	-840.46	1676059.87	14363523.55	39°33'12.9321"N	80°52'24.7761"W	4583.24	349.434	1.27	-0.81	-0.98	
11093.00	90.650	341.930	6524.08	4623.65	4589.15	-867.85	1676032.49	14363607.14	39°33'13.7590"N	80°52'25.1243"W	4670.49	349.291	0.62	0.60	0.15	
11182.00	89.050	340.980	6524.31	4712.64	4673.52	-896.15	1676004.20	14363691.48	39°33'14.5933"N	80°52'25.4841"W	4758.67	349.145	2.09	-1.80	-1.07	
11270.00	91.020	342.680	6524.26	4800.63	4757.13	-923.59	1675976.77	14363775.05	39°33'15.4200"N	80°52'25.8329"W	4845.96	349.013	2.96	2.24	1.93	
11359.00	90.280	342.070	6523.25	4889.60	4841.95	-950.54	1675949.83	14363859.84	39°33'16.2586"N	80°52'26.1754"W	4934.36	348.893	1.08	-0.83	-0.69	
11447.00	90.340	340.560	6522.77	4977.60	4925.30	-978.73	1675921.65	14363943.16	39°33'17.0828"N	80°52'26.5338"W	5021.61	348.761	1.72	0.07	-1.72	
11535.00	90.400	341.140	6522.20	5065.60	5008.43	-1007.60	1675892.80	14364026.26	39°33'17.9048"N	80°52'26.9009"W	5108.78	348.625	0.66	0.07	0.66	
11624.00	90.550	340.880	6521.47	5154.59	5092.58	-1036.56	1675863.85	14364110.38	39°33'18.7369"N	80°52'27.2691"W	5197.01	348.495	0.34	0.17	-0.29	
11712.00	90.550	340.960	6520.62	5242.59	5175.75	-1065.32	1675835.10	14364193.50	39°33'19.5592"N	80°52'27.6349"W	5284.25	348.369	0.09	0.00	0.09	
11801.00	90.370	339.840	6519.91	5331.57	5259.59	-1095.18	1675805.25	14364277.31	39°33'20.3882"N	80°52'28.0145"W	5372.40	348.238	1.27	-0.20	-1.26	
11889.00	90.680	341.160	6519.10	5419.56	5342.53	-1124.55	1675775.89	14364360.22	39°33'21.2084"N	80°52'28.3880"W	5459.60	348.113	1.54	0.35	1.50	
11978.00	90.710	340.170	6518.02	5508.55	5426.51	-1154.01	1675746.44	14364444.16	39°33'22.0388"N	80°52'28.7627"W	5547.86	347.994	1.11	0.03	-1.11	
12066.00	90.830	342.100	6516.84	5596.54	5509.77	-1182.46	1675718.00	14364527.39	39°33'22.8621"N	80°52'29.1244"W	5635.22	347.887	2.20	0.14	2.19	
12154.00	90.980	342.480	6515.45	5684.51	5593.59	-1209.23	1675691.25	14364611.18	39°33'23.6908"N	80°52'29.4647"W	5722.80	347.801	0.46	0.17	0.43	
12243.00	91.350	343.970	6513.64	5773.43	5678.78	-1234.91	1675665.58	14364696.33	39°33'24.5332"N	80°52'29.7910"W	5811.50	347.731	1.72	0.42	1.67	
12331.00	91.380	344.770	6511.54	5861.27	5763.50	-1258.61	1675641.88	14364781.02	39°33'25.3708"N	80°52'30.0921"W	5899.32	347.681	0.91	0.03	0.91	
12420.00	91.600	345.120	6509.23	5950.05	5849.42	-1281.72	1675618.78	14364866.90	39°33'26.2202"N	80°52'30.3857"W	5988.19	347.641	0.46	0.25	0.39	
12508.00	90.400	340.970	6507.69	6037.97	5933.56	-1307.37	1675593.14	14364951.01	39°33'27.0522"N	80°52'30.7117"W	6075.88	347.574	4.91	-1.36	-4.72	



Actual Wellpath Report

Cheat Unit 2H AWP Proj: 22341'

Page 7 of 13



REFERENCE WELLPATH IDENTIFICATION			
Operator	ANTERO RESOURCES CORPORATION	Well	Cheat Unit 2H
Field	Tyler	API	47-095-02720-0000
Facility	Elk Fork Pad	Wellbore	Cheat Unit 2H AWB
Slot	Slot #04		

WELLPATH DATA (261 stations)																	
MD [ft]	Inclination [°]	Azimuth [°]	TVD [ft]	Vert Sect [ft]	North [ft]	East [ft]	Grid East [US ft]	Grid North [US ft]	Latitude	Longitude	Closure Dist [ft]	Closure Dir [°]	DLS [°/100ft]	Build Rate [°/100ft]	Turn Rate [°/100ft]	Comments	
12597.00	90.740	342.050	6506.81	6126.96	6017.96	-1335.60	1675564.93	14365035.38	39°33'27.8867"N	80°52'31.0705"W	6164.38	347.487	1.27	0.38	1.21		
12685.00	91.720	342.090	6504.92	6214.93	6101.66	-1362.68	1675537.85	14365119.05	39°33'28.7144"N	80°52'31.4149"W	6251.98	347.411	1.11	1.11	0.05		
12773.00	90.680	342.360	6503.07	6302.89	6185.44	-1389.54	1675511.01	14365202.80	39°33'29.5428"N	80°52'31.7563"W	6339.60	347.339	1.22	-1.18	0.31		
12862.00	90.920	342.220	6501.83	6391.87	6270.22	-1416.61	1675483.95	14365287.54	39°33'30.3810"N	80°52'32.1004"W	6428.25	347.269	0.31	0.27	-0.16		
12950.00	90.280	342.500	6500.91	6479.84	6354.07	-1443.28	1675457.29	14365371.36	39°33'31.2101"N	80°52'32.4394"W	6515.93	347.203	0.79	-0.73	0.32		
13039.00	88.620	342.170	6501.76	6568.82	6438.87	-1470.28	1675430.30	14365456.12	39°33'32.0486"N	80°52'32.7827"W	6604.60	347.137	1.90	-1.87	-0.37		
13127.00	89.780	342.690	6502.99	6656.78	6522.76	-1496.84	1675403.75	14365539.97	39°33'32.8780"N	80°52'33.1203"W	6692.30	347.076	1.44	1.32	0.59		
13215.00	89.450	340.750	6503.58	6744.77	6606.31	-1524.44	1675376.16	14365623.49	39°33'33.7041"N	80°52'33.4712"W	6779.91	347.006	2.24	-0.37	-2.20		
13304.00	89.570	341.560	6504.35	6833.77	6690.53	-1553.19	1675347.42	14365707.68	39°33'34.5369"N	80°52'33.8368"W	6868.45	346.930	0.92	0.13	0.91		
13392.00	89.480	341.590	6505.08	6921.76	6774.02	-1581.00	1675319.62	14365791.14	39°33'35.3624"N	80°52'34.1904"W	6956.07	346.863	0.11	-0.10	0.03		
13481.00	89.570	341.730	6505.81	7010.76	6858.50	-1609.01	1675291.63	14365875.58	39°33'36.1977"N	80°52'34.5465"W	7044.71	346.797	0.19	0.10	0.16		
13569.00	89.540	341.720	6506.50	7098.75	6942.06	-1636.60	1675264.04	14365959.11	39°33'37.0239"N	80°52'34.8973"W	7132.36	346.735	0.04	-0.03	-0.01		
13657.00	89.290	340.970	6507.40	7186.74	7025.43	-1664.75	1675235.91	14366042.44	39°33'37.8483"N	80°52'35.2552"W	7219.97	346.669	0.90	-0.28	-0.85		
13746.00	90.430	341.970	6507.61	7275.74	7109.81	-1693.03	1675207.64	14366126.79	39°33'38.6827"N	80°52'35.6149"W	7308.61	346.606	1.70	1.28	1.12		
13834.00	90.370	343.070	6507.00	7363.71	7193.74	-1719.46	1675181.22	14366210.69	39°33'39.5125"N	80°52'35.9509"W	7396.38	346.557	1.25	-0.07	1.25		
13923.00	90.400	341.700	6506.40	7452.69	7278.57	-1746.39	1675154.30	14366295.48	39°33'40.3512"N	80°52'36.2933"W	7485.15	346.508	1.54	0.03	-1.54		
14011.00	90.250	342.330	6505.90	7540.68	7362.26	-1773.57	1675127.13	14366379.15	39°33'41.1788"N	80°52'36.6387"W	7572.88	346.456	0.74	-0.17	0.72		
14099.00	89.940	340.190	6505.76	7628.67	7445.59	-1801.84	1675098.88	14366462.44	39°33'42.0028"N	80°52'36.9982"W	7660.51	346.396	2.46	-0.35	-2.43		
14188.00	90.740	342.550	6505.23	7717.66	7529.92	-1830.26	1675070.46	14366546.74	39°33'42.8366"N	80°52'37.3597"W	7749.17	346.338	2.80	0.90	2.65		
14276.00	90.460	341.410	6504.31	7805.65	7613.60	-1857.49	1675043.25	14366630.38	39°33'43.6640"N	80°52'37.7058"W	7836.91	346.289	1.33	-0.32	-1.30		
14365.00	90.620	340.970	6503.47	7894.64	7697.84	-1886.18	1675014.56	14366714.59	39°33'44.4969"N	80°52'38.0707"W	7925.56	346.232	0.53	0.18	-0.49		
14453.00	90.740	342.480	6502.42	7982.63	7781.40	-1913.77	1674986.98	14366798.11	39°33'45.3231"N	80°52'38.4216"W	8013.28	346.183	1.72	0.14	1.72		
14542.00	90.250	341.700	6501.65	8071.61	7866.08	-1941.14	1674959.63	14366882.76	39°33'46.1604"N	80°52'38.7695"W	8102.05	346.138	1.03	-0.55	-0.88		
14630.00	90.340	340.760	6501.20	8159.61	7949.40	-1969.46	1674931.32	14366966.04	39°33'46.9842"N	80°52'39.1296"W	8189.73	346.085	1.07	0.10	-1.07		
14719.00	90.430	341.830	6500.60	8248.61	8033.69	-1998.00	1674902.79	14367050.31	39°33'47.8177"N	80°52'39.4926"W	8278.42	346.034	1.21	0.10	1.20		
14807.00	90.220	341.480	6500.10	8336.60	8117.22	-2025.69	1674875.11	14367133.80	39°33'48.6436"N	80°52'39.8448"W	8366.16	345.988	0.46	-0.24	-0.40		
14896.00	90.580	341.240	6499.48	8425.60	8201.55	-2054.14	1674846.67	14367218.09	39°33'49.4774"N	80°52'40.2065"W	8454.87	345.939	0.49	0.40	-0.27		
14984.00	90.800	342.520	6498.42	8513.59	8285.18	-2081.50	1674819.32	14367301.69	39°33'50.3043"N	80°52'40.5545"W	8542.65	345.897	1.48	0.25	1.45		
15072.00	90.710	341.340	6497.26	8601.57	8368.83	-2108.80	1674792.04	14367385.31	39°33'51.1314"N	80°52'40.9015"W	8630.43	345.857	1.34	-0.10	-1.34		
15161.00	90.620	342.050	6496.23	8690.56	8453.32	-2136.75	1674764.10	14367469.76	39°33'51.9668"N	80°52'41.2570"W	8719.19	345.814	0.80	-0.10	0.80		



Actual Wellpath Report

Cheat Unit 2H AWP Proj: 22341'

Page 8 of 13



REFERENCE WELLPATH IDENTIFICATION				
Operator	ANTERO RESOURCES CORPORATION		Well	Cheat Unit 2H
Field	Tyler		API	47-095-02720-0000
Facility	Elk Fork Pad		Wellbore	Cheat Unit 2H AWB
Slot	Slot #04			

WELLPATH DATA (261 stations)

MD [ft]	Inclination [°]	Azimuth [°]	TVD [ft]	Vert Sect [ft]	North [ft]	East [ft]	Grid East [US ft]	Grid North [US ft]	Latitude	Longitude	Closure Dist [ft]	Closure Dir [°]	DLS [°/100ft]	Build Rate [°/100ft]	Turn Rate [°/100ft]	Comments
15249.00	90.250	341.480	6495.56	8778.55	8536.90	-2164.28	1674736.57	14367553.31	39°33'52.7932"N	80°52'41.6071"W	8806.97	345.774	0.77	-0.42	-0.65	
15338.00	90.650	341.260	6494.86	8867.55	8621.23	-2192.71	1674708.15	14367637.61	39°33'53.6271"N	80°52'41.9687"W	8895.71	345.730	0.51	0.45	-0.25	
15426.00	90.490	341.310	6493.99	8955.54	8704.57	-2220.95	1674679.93	14367720.92	39°33'54.4512"N	80°52'42.3277"W	8983.44	345.687	0.19	-0.18	0.06	
15515.00	90.650	341.270	6493.10	9044.54	8788.86	-2249.50	1674651.39	14367805.18	39°33'55.2846"N	80°52'42.6908"W	9072.18	345.643	0.19	0.18	-0.04	
15603.00	90.740	340.760	6492.03	9132.53	8872.07	-2278.12	1674622.78	14367888.35	39°33'56.1074"N	80°52'43.0549"W	9159.89	345.599	0.59	0.10	-0.58	
15692.00	91.080	341.260	6490.62	9221.52	8956.22	-2307.08	1674593.83	14367972.46	39°33'56.9394"N	80°52'43.4232"W	9248.59	345.555	0.68	0.38	0.56	
15780.00	90.280	342.560	6489.58	9309.50	9039.86	-2334.40	1674566.52	14368056.07	39°33'57.7664"N	80°52'43.7706"W	9336.41	345.521	1.73	-0.91	1.48	
15869.00	90.800	341.700	6488.74	9398.49	9124.56	-2361.71	1674539.23	14368140.74	39°33'58.6039"N	80°52'44.1179"W	9425.25	345.489	1.13	0.58	-0.97	
15957.00	90.280	342.840	6487.91	9486.46	9208.37	-2388.51	1674512.44	14368224.52	39°33'59.4326"N	80°52'44.4586"W	9513.10	345.459	1.42	-0.59	1.30	
16045.00	90.580	341.740	6487.25	9574.44	9292.20	-2415.28	1674485.68	14368308.31	39°34'0.2614"N	80°52'44.7990"W	9600.97	345.430	1.30	0.34	-1.25	
16134.00	90.490	342.030	6486.42	9663.43	9376.79	-2442.95	1674458.02	14368392.86	39°34'1.0978"N	80°52'45.1508"W	9689.79	345.397	0.34	-0.10	0.33	
16222.00	90.430	340.970	6485.71	9751.43	9460.23	-2470.87	1674430.11	14368476.28	39°34'1.9229"N	80°52'45.5059"W	9777.59	345.362	1.21	-0.07	-1.20	
16311.00	91.080	341.040	6484.54	9840.42	9544.38	-2499.83	1674401.16	14368560.39	39°34'2.7549"N	80°52'45.8744"W	9866.32	345.323	0.73	0.73	0.08	
16399.00	91.290	342.970	6482.72	9928.39	9628.05	-2527.01	1674373.99	14368644.03	39°34'3.5822"N	80°52'46.2200"W	9954.16	345.294	2.21	0.24	2.19	
16488.00	91.020	341.990	6480.92	10017.34	9712.91	-2553.80	1674347.21	14368728.85	39°34'4.4212"N	80°52'46.5606"W	10043.03	345.269	1.14	-0.30	-1.10	
16576.00	90.800	341.070	6479.53	10105.33	9796.36	-2581.68	1674319.35	14368812.27	39°34'5.2464"N	80°52'46.9151"W	10130.83	345.236	1.07	-0.25	-1.05	
16665.00	90.920	342.030	6478.19	10194.32	9880.78	-2609.84	1674291.20	14368896.65	39°34'6.0811"N	80°52'47.2733"W	10219.64	345.204	1.09	0.13	1.08	
16753.00	90.280	339.940	6477.27	10282.31	9963.97	-2638.51	1674262.54	14368979.81	39°34'6.9036"N	80°52'47.6379"W	10307.39	345.168	2.48	-0.73	-2.38	
16841.00	90.030	339.960	6477.03	10370.29	10046.63	-2668.68	1674232.38	14369062.44	39°34'7.7210"N	80°52'48.0218"W	10395.03	345.124	0.28	-0.28	0.02	
16930.00	90.280	340.030	6476.79	10459.27	10130.26	-2699.12	1674201.95	14369146.03	39°34'8.5479"N	80°52'48.4091"W	10483.68	345.081	0.29	0.28	0.08	
17018.00	89.690	340.650	6476.81	10547.26	10213.13	-2728.73	1674172.35	14369228.87	39°34'9.3674"N	80°52'48.7858"W	10571.38	345.041	0.97	-0.67	0.70	
17107.00	89.570	340.250	6477.39	10636.25	10297.00	-2758.51	1674142.58	14369312.70	39°34'10.1966"N	80°52'49.1646"W	10660.09	345.003	0.47	-0.13	-0.45	
17196.00	91.170	340.860	6476.81	10725.24	10380.92	-2788.14	1674112.97	14369396.59	39°34'11.0264"N	80°52'49.5415"W	10748.82	344.966	1.92	1.80	0.69	
17284.00	90.220	338.920	6475.74	10813.20	10463.54	-2818.39	1674082.73	14369479.18	39°34'11.8434"N	80°52'49.9264"W	10836.47	344.925	2.45	-1.08	-2.20	
17372.00	89.850	340.330	6475.69	10901.17	10546.03	-2849.03	1674052.10	14369561.64	39°34'12.6591"N	80°52'50.3163"W	10924.09	344.882	1.65	-0.42	1.60	
17461.00	91.780	341.530	6474.43	10990.15	10630.13	-2878.10	1674023.04	14369645.71	39°34'13.4907"N	80°52'50.6861"W	11012.87	344.850	2.55	2.17	1.35	
17549.00	90.490	335.800	6472.68	11078.01	10712.05	-2910.10	1673991.06	14369727.59	39°34'14.3007"N	80°52'51.0933"W	11100.30	344.802	6.67	-1.47	-6.51	
17638.00	90.830	337.760	6471.66	11166.74	10793.83	-2945.18	1673955.99	14369809.34	39°34'15.1094"N	80°52'51.5399"W	11188.43	344.738	2.23	0.38	2.20	
17726.00	91.170	338.470	6470.12	11254.60	10875.48	-2977.98	1673923.20	14369890.95	39°34'15.9168"N	80°52'51.9574"W	11275.83	344.686	0.89	0.39	0.81	
17815.00	90.860	338.760	6468.54	11343.50	10958.34	-3010.43	1673890.77	14369973.78	39°34'16.7361"N	80°52'52.3703"W	11364.32	344.639	0.48	-0.35	0.33	



Actual Wellpath Report

Cheat Unit 2H AWP Proj: 22341'
Page 9 of 13



REFERENCE WELLPATH IDENTIFICATION			
Operator	ANTERO RESOURCES CORPORATION	Well	Cheat Unit 2H
Field	Tyler	API	47-095-02720-0000
Facility	Elk Fork Pad	Wellbore	Cheat Unit 2H AWP
Slot	Slot #04		

WELLPATH DATA (261 stations)																	
MD [ft]	Inclination [°]	Azimuth [°]	TVD [ft]	Vert Sect [ft]	North [ft]	East [ft]	Grid East [US ft]	Grid North [US ft]	Latitude	Longitude	Closure Dist [ft]	Closure Dir [°]	DLS [°/100ft]	Build Rate [°/100ft]	Turn Rate [°/100ft]	Comments	
17903.00	91.660	339.540	6466.61	11431.42	11040.55	-3041.74	1673859.47	14370055.96	39°34'17.5491"N	80°52'52.7688"W	11451.90	344.597	1.27	0.91	0.89		
17992.00	91.170	339.980	6464.41	11520.37	11124.03	-3072.52	1673828.70	14370139.41	39°34'18.3745"N	80°52'53.1604"W	11540.56	344.560	0.74	-0.55	0.49		
18080.00	91.020	339.550	6462.73	11608.33	11206.58	-3102.95	1673798.28	14370221.93	39°34'19.1908"N	80°52'53.5477"W	11628.24	344.523	0.52	-0.17	-0.49		
18169.00	91.970	339.620	6460.41	11697.26	11289.97	-3133.99	1673767.26	14370305.27	39°34'20.0153"N	80°52'53.9426"W	11716.88	344.486	1.07	1.07	0.08		
18257.00	91.480	339.950	6457.76	11785.19	11372.51	-3164.38	1673736.88	14370387.78	39°34'20.8314"N	80°52'54.3293"W	11804.54	344.451	0.67	-0.56	0.37		
18346.00	90.920	338.950	6455.89	11874.13	11455.82	-3195.61	1673705.66	14370471.07	39°34'21.6553"N	80°52'54.7268"W	11893.18	344.414	1.29	-0.63	-1.12		
18434.00	89.450	339.880	6455.81	11962.09	11538.20	-3226.55	1673674.73	14370553.41	39°34'22.4698"N	80°52'55.1205"W	11980.85	344.377	1.98	-1.67	1.06		
18523.00	89.720	338.950	6456.25	12051.04	11621.52	-3257.84	1673643.45	14370636.69	39°34'23.2937"N	80°52'55.5187"W	12069.51	344.340	1.09	0.30	-1.04		
18611.00	89.380	340.040	6456.95	12139.00	11703.94	-3288.67	1673612.64	14370719.08	39°34'24.1086"N	80°52'55.9109"W	12157.20	344.305	1.30	-0.39	1.24		
18700.00	88.830	340.150	6458.34	12227.97	11787.61	-3318.96	1673582.35	14370802.72	39°34'24.9360"N	80°52'56.2964"W	12245.95	344.275	0.63	-0.62	0.12		
18788.00	89.350	339.520	6459.73	12315.94	11870.20	-3349.30	1673552.03	14370885.28	39°34'25.7527"N	80°52'56.6824"W	12333.67	344.243	0.93	0.59	-0.72		
18877.00	88.980	339.890	6461.03	12404.90	11953.67	-3380.16	1673521.18	14370968.71	39°34'26.5780"N	80°52'57.0752"W	12422.39	344.211	0.59	-0.42	0.42		
18965.00	89.260	340.530	6462.38	12492.88	12036.46	-3409.95	1673491.40	14371051.47	39°34'27.3966"N	80°52'57.4542"W	12510.16	344.182	0.79	0.32	0.73		
19054.00	88.770	339.320	6463.91	12581.84	12120.04	-3440.50	1673460.87	14371135.02	39°34'28.2231"N	80°52'57.8429"W	12598.90	344.152	1.47	-0.55	-1.36		
19142.00	88.680	340.270	6465.87	12669.79	12202.60	-3470.88	1673430.50	14371217.55	39°34'29.0394"N	80°52'58.2295"W	12686.63	344.122	1.08	-0.10	1.08		
19231.00	89.260	341.580	6467.47	12758.77	12286.70	-3499.96	1673401.43	14371301.61	39°34'29.8710"N	80°52'58.5995"W	12775.48	344.100	1.61	0.65	1.47		
19319.00	88.890	342.410	6468.89	12846.75	12370.38	-3527.16	1673374.24	14371385.26	39°34'30.6983"N	80°52'58.9454"W	12863.40	344.086	1.03	-0.42	0.94		
19408.00	89.480	341.300	6470.16	12935.74	12454.94	-3554.87	1673346.54	14371469.79	39°34'31.5345"N	80°52'59.2980"W	12952.33	344.070	1.41	0.66	-1.25		
19496.00	89.570	341.790	6470.89	13023.73	12538.42	-3582.73	1673318.69	14371553.22	39°34'32.3598"N	80°52'59.6523"W	13040.24	344.053	0.57	0.10	0.56		
19585.00	89.080	341.960	6471.93	13112.72	12622.99	-3610.42	1673291.02	14371637.77	39°34'33.1960"N	80°53'0.0045"W	13129.17	344.038	0.58	-0.55	0.19		
19673.00	89.480	342.190	6473.04	13200.70	12706.71	-3637.50	1673263.95	14371721.46	39°34'34.0238"N	80°53'0.3489"W	13217.11	344.025	0.52	0.45	0.26		
19762.00	90.120	343.070	6473.35	13289.67	12791.65	-3664.07	1673237.39	14371806.36	39°34'34.8636"N	80°53'0.6868"W	13306.08	344.016	1.22	0.72	0.99		
19850.00	90.030	342.430	6473.24	13377.63	12875.70	-3690.16	1673211.31	14371890.37	39°34'35.6946"N	80°53'1.0187"W	13394.06	344.008	0.73	-0.10	-0.73		
19939.00	89.450	342.380	6473.64	13466.61	12960.53	-3717.07	1673184.41	14371975.17	39°34'36.5334"N	80°53'1.3609"W	13483.02	343.997	0.65	-0.65	-0.06		
20027.00	89.510	341.970	6474.44	13554.60	13044.30	-3744.00	1673157.49	14372058.91	39°34'37.3616"N	80°53'1.7035"W	13570.98	343.985	0.47	0.07	-0.47		
20116.00	89.780	341.720	6474.99	13643.59	13128.87	-3771.73	1673129.77	14372143.44	39°34'38.1978"N	80°53'2.0563"W	13659.91	343.971	0.41	0.30	-0.28		
20204.00	89.420	341.560	6475.60	13731.58	13212.39	-3799.45	1673102.06	14372226.93	39°34'39.0236"N	80°53'2.4089"W	13747.84	343.956	0.45	-0.41	-0.18		
20293.00	89.380	341.960	6476.54	13820.57	13296.91	-3827.31	1673074.22	14372311.42	39°34'39.8593"N	80°53'2.7632"W	13836.77	343.942	0.45	-0.04	0.45		
20381.00	89.480	341.520	6477.41	13908.56	13380.48	-3854.88	1673046.66	14372394.95	39°34'40.6855"N	80°53'3.1139"W	13924.70	343.928	0.51	0.11	-0.50		
20470.00	89.910	341.800	6477.88	13997.56	13464.95	-3882.88	1673018.66	14372479.39	39°34'41.5208"N	80°53'3.4702"W	14013.63	343.914	0.58	0.48	0.31		



Actual Wellpath Report

Cheat Unit 2H AWP Proj: 22341'

Page 10 of 13



REFERENCE WELLPATH IDENTIFICATION

Operator	ANTERO RESOURCES CORPORATION	Well	Cheat Unit 2H
Field	Tyler	API	47-095-02720-0000
Facility	Elk Fork Pad	Wellbore	Cheat Unit 2H AWB
Slot	Slot #04		

WELLPATH DATA (261 stations) † = interpolated, ‡ = extrapolated station

MD [ft]	Inclination [°]	Azimuth [°]	TVD [ft]	Vert Sect [ft]	North [ft]	East [ft]	Grid East [US ft]	Grid North [US ft]	Latitude	Longitude	Closure Dist [ft]	Closure Dir [°]	DLS [°/100ft]	Build Rate [°/100ft]	Turn Rate [°/100ft]	Comments
20558.00	80.150	342.160	6477.84	14085.55	13548.64	-3910.10	1672991.45	14372563.04	39°34'42.3482"N	80°53'3.8165"W	14101.58	343.902	0.49	0.27	0.41	
20647.00	89.880	342.400	6477.82	14174.53	13633.41	-3937.19	1672964.37	14372647.78	39°34'43.1864"N	80°53'4.1610"W	14190.54	343.892	0.41	-0.30	0.27	
20735.00	89.690	342.830	6478.15	14262.50	13717.39	-3963.49	1672938.09	14372731.73	39°34'44.0167"N	80°53'4.4955"W	14278.52	343.884	0.53	-0.22	0.49	
20823.00	89.630	342.120	6478.67	14350.48	13801.31	-3989.98	1672911.60	14372815.61	39°34'44.8464"N	80°53'4.8325"W	14366.49	343.875	0.81	-0.07	-0.81	
21000.00	89.260	341.720	6480.38	14527.45	13969.56	-4044.91	1672856.70	14372983.79	39°34'46.5100"N	80°53'5.5313"W	14543.38	343.852	0.31	-0.21	-0.23	
21089.00	89.260	341.750	6481.53	14616.44	14054.07	-4072.80	1672828.82	14373068.27	39°34'47.3455"N	80°53'5.8861"W	14632.31	343.839	0.03	0.00	0.03	
21177.00	89.510	341.630	6482.48	14704.43	14137.61	-4100.45	1672801.18	14373151.78	39°34'48.1715"N	80°53'6.2378"W	14720.25	343.826	0.32	0.28	-0.14	
21265.00	89.850	342.130	6482.97	14792.43	14221.24	-4127.82	1672773.83	14373235.38	39°34'48.9985"N	80°53'6.5859"W	14808.19	343.814	0.69	0.39	0.57	
21354.00	89.600	341.680	6483.40	14881.42	14305.84	-4155.46	1672746.20	14373319.94	39°34'49.8349"N	80°53'6.9376"W	14897.14	343.803	0.58	-0.28	-0.51	
21442.00	89.720	341.780	6483.92	14969.41	14389.40	-4183.05	1672718.62	14373403.47	39°34'50.6611"N	80°53'7.2886"W	14985.08	343.791	0.18	0.14	0.11	
21531.00	89.750	342.120	6484.33	15058.40	14474.02	-4210.62	1672691.05	14373488.05	39°34'51.4978"N	80°53'7.6394"W	15074.04	343.780	0.38	0.03	0.38	
21619.00	89.850	342.020	6484.64	15146.39	14557.75	-4237.71	1672663.97	14373571.75	39°34'52.3256"N	80°53'7.9840"W	15162.00	343.770	0.16	0.11	-0.11	
21708.00	89.910	342.400	6484.82	15235.38	14642.49	-4264.90	1672636.79	14373656.46	39°34'53.1635"N	80°53'8.3299"W	15250.96	343.761	0.43	0.07	0.43	
21796.00	89.260	342.230	6485.46	15323.35	14726.33	-4291.64	1672610.07	14373740.26	39°34'53.9924"N	80°53'8.6700"W	15338.93	343.752	0.76	-0.74	-0.19	
21884.00	89.720	342.710	6486.24	15411.33	14810.24	-4318.14	1672583.58	14373824.14	39°34'54.8220"N	80°53'9.0071"W	15426.91	343.745	0.76	0.52	0.55	
21973.00	89.690	341.600	6486.70	15500.31	14894.95	-4345.41	1672556.32	14373908.82	39°34'55.6596"N	80°53'9.3541"W	15515.87	343.736	1.25	-0.03	-1.25	
22061.00	89.420	342.120	6487.39	15588.30	14978.58	-4372.81	1672528.93	14373992.41	39°34'56.4864"N	80°53'9.7026"W	15603.82	343.725	0.67	-0.31	0.59	
22150.00	89.850	342.030	6487.95	15677.29	15063.25	-4400.20	1672501.55	14374077.05	39°34'57.3237"N	80°53'10.0511"W	15692.78	343.716	0.49	0.48	-0.10	
22238.00	89.510	342.000	6488.44	15765.28	15146.95	-4427.37	1672474.39	14374160.72	39°34'58.1512"N	80°53'10.3968"W	15780.74	343.707	0.39	-0.39	-0.03	
22317.00	89.630	342.150	6489.04	15844.27	15222.12	-4451.69	1672450.09	14374235.85	39°34'58.8944"N	80°53'10.7061"W	15859.71	343.699	0.24	0.15	0.19	
22341.00†	89.630	342.150	6489.19	15868.26	15244.96	-4459.04	1672442.73	14374258.69	39°34'59.1203"N	80°53'10.7997"W	15883.70	343.696	0.00	0.00	0.00	Projected MD at TD: 22341'



Actual Wellpath Report

Cheat Unit 2H AWP Proj: 22341'

Page 11 of 13



REFERENCE WELLPATH IDENTIFICATION

Operator	ANTERO RESOURCES CORPORATION	Well	Cheat Unit 2H
Field	Tyler	API	47-095-02720-0000
Facility	Elk Fork Pad	Wellbore	Cheat Unit 2H AWB
Slot	Slot #04		

HOLE & CASING SECTIONS - Ref Wellbore: Cheat Unit 2H AWB Ref Wellpath: Cheat Unit 2H AWP Proj: 22341'

String/Diameter	Start MD [ft]	End MD [ft]	Interval [ft]	Start TVD [ft]	End TVD [ft]	Start N/S [ft]	Start E/W [ft]	End N/S [ft]	End E/W [ft]
20in Conductor	25.50	105.50	80.00	25.50	105.50	0.00	0.00	-0.30	-0.39
17.5in Open Hole	105.50	389.00	283.50	105.50	388.99	-0.30	-0.39	-1.66	-2.28
13.375in Casing Surface	25.50	364.00	338.50	25.50	363.99	0.00	0.00	-1.61	-2.15
12.25in Open Hole	389.00	2604.00	2215.00	388.99	2598.47	-1.66	-2.28	-90.39	24.94
9.625in Casing Intermediate	25.50	2574.60	2549.10	25.50	2569.07	0.00	0.00	-90.55	25.27
8.75in Open Hole	2604.00	5898.00	3294.00	2598.47	5817.31	-90.39	24.94	74.11	659.44
8.5in Open Hole	5898.00	22341.00	16443.00	5817.31	6489.19	74.11	659.44	15244.96	-4459.04
5.5in Casing Production	25.50	22341.00	22315.50	25.50	6489.19	0.00	0.00	15244.96	-4459.04



Actual Wellpath Report

Cheat Unit 2H AWP Proj: 22341'
Page 12 of 13



REFERENCE WELLPATH IDENTIFICATION			
Operator	ANTERO RESOURCES CORPORATION	Well	Cheat Unit 2H
Field	Tyler	API	47-095-02720-0000
Facility	Elk Fork Pad	Wellbore	Cheat Unit 2H AWB
Slot	Slot #04		

TARGETS								
Name	TVD [ft]	North [ft]	East [ft]	Grid East [US ft]	Grid North [US ft]	Latitude	Longitude	Shape
Cheat Unit 2H POE Rev-1	6497.00	374.92	598.12	1677497.87	14359394.60	39°32'32.0879"N	80°52'6.4875"W	point
Cheat Unit 2H POE Rev-3	6504.00	556.13	589.15	1677488.90	14359575.74	39°32'33.8790"N	80°52'6.5986"W	point
Cheat Unit 2H AZI Rev-2	6539.00	1086.11	355.58	1677255.43	14360105.50	39°32'39.1203"N	80°52'9.5702"W	point
Cheat Unit 2H BHL Rev-2	6539.00	15245.89	-4473.28	1672428.50	14374259.61	39°34'59.1296"N	80°53'10.9815"W	point
Cheat Unit 2H LP Rev-3	6539.00	754.90	492.20	1677391.99	14359774.43	39°32'35.8449"N	80°52'7.8324"W	point
Cheat Unit 2H 50' L/R Hard Line	7000.00	7810.40	-1937.58	1674963.18	14366827.11	39°33'45.6101"N	80°52'38.7251"W	rectangle
2D Rectangle 15711.9 x 100.								

WELLPATH COMPOSITION - Ref Wellbore: Cheat Unit 2H AWB Ref Wellpath: Cheat Unit 2H AWP Proj: 22341'							
Start MD [ft]	End MD [ft]	Positional Uncertainty Model	Log Name/Comment	Wellbore	Survey Date		
25.50	385.00	Gyrodatta 2015 - GC+WIR+DPIPE	01 Gyrodatta MS Gyro <17-1/2"> (100'-385')	Cheat Unit 2H AWB	10/Jan/2021		
385.00	2527.00	BH NaviTrak (2019) (Axial Corr+HRGM)	02 APS EM <12-1/4"> (385')(418'-2527')	Cheat Unit 2H AWB	10/Jan/2021		
2527.00	5827.00	BH NaviTrak (2019) (Axial Corr+HRGM)	03 APS EM <8-3/4"> (2527')(2637'-5827')	Cheat Unit 2H AWB	09/Feb/2021		
5827.00	22341.00	BH AutoTrak Curve/eXpress (2019) (HRGM, Short spacing)	04 BH AT Curve <8-1/2"> (5827')(5876'-22317')	Cheat Unit 2H AWB	09/Feb/2021		



Actual Wellpath Report

Cheat Unit 2H AWP Proj: 22341'

Page 13 of 13



REFERENCE WELLPATH IDENTIFICATION			
Operator	ANTERO RESOURCES CORPORATION	Well	Cheat Unit 2H
Field	Tyler	API	47-095-02720-0000
Facility	Elk Fork Pad	Wellbore	Cheat Unit 2H AWB
Slot	Slot #04		

COMMENTS
<p>Wellpath general comments API: 47-095-02720-0000 BH Job #: 110728649-B Rig: H&P 317 Duration: 2/10/2021-2/17/2021 Gyrodatta MS Gyro <17-1/2"> (100'-385') APS EM <12-1/4"> (385')(418'-2527') APS EM <8-3/4"> (2527')(2637'-5827') BH AT Curve <8-1/2"> (5827')(5876'-22317') Sycamore: 6365' MD Middlesex: 6507' MD Burkett: 6661' MD Tully: 6698' MD Marcellus POE: 6834' MD Projected MD at TD: 22341'</p>