



ANTERO RESOURCES CORPORATION



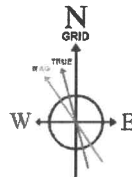
Location: Tyler County, WV
Field: Tyler
Facility: Shepherd Pad

Slot: Slot A
Well: Rapids Unit 1H
Wellbore: Rapids Unit 1H PWB

Plot reference wellpath is Rapids Unit 1H PWP Rev-B.0	Grid System: NAD27 / UTM Zone 17 North, US feet
True vertical depths are referenced to H&P 317 (RKB)	North Reference: Grid north
Reference wellpath measured depths are referenced to H&P 317 (RKB)	Scale: True distance
H&P 317 (RKB) to Mean Sea Level: 960.5 feet	Coordinates are in feet referenced to Slot
Mean Sea Level to Ground level (At Slot: Slot A): -935 feet	Depths are in feet
Offset wellpath MDs are referenced to each well's default MD datum	Created by: edsaryar on 2021-09-03, Database: WA_MPL_EASTERNUS_Defn

Location Information					
Facility Name	Grid East (US ft)	Grid North (US ft)	Latitude	Longitude	
Shepherd Pad	1707846.620	14305279.260	39°23'36.4150"N	80°45'40.7780"W	
Slot	Local N (ft)	Local E (ft)	Grid East (US ft)	Grid North (US ft)	Longitude
Slot A	0.00	0.00	1707846.620	14305279.260	39°23'36.4150"N 80°45'40.7780"W
H&P 317 (RKB) to Ground level (At Slot: Slot A)			25.5ft		
Mean Sea Level to Ground level (At Slot: Slot A)			-935ft		
H&P 317 (RKB) to Mean Sea Level			960.5ft		

Well Profile Data							
Design Comment	MD (ft)	Inc (°)	Az (°)	TVD (ft)	Local N (ft)	Local E (ft)	VS (ft)
Tie On	3279.00	25.180	214.320	3042.45	-843.70	-649.79	-594.08
Proj. to Bottom	3357.00	25.180	214.320	3113.04	-871.11	-668.50	-614.14
Drill Out	3437.00	25.180	214.320	3185.44	-899.22	-687.69	-634.71
Turn	3784.58	27.155	199.161	3497.73	-1035.38	-755.49	-742.34
Curve KOP	6492.05	27.155	199.161	5906.77	-2202.62	-1161.07	-1720.70
POE	7447.87	73.711	341.507	6646.00	-1899.94	-1448.02	-1342.64
Landing Pt.	7610.76	90.000	341.507	6669.00	-1747.53	-1499.00	-1181.93
BHL	24122.00	90.000	341.507	6669.00	13911.08	-6736.26	15329.31



User specified (HDGM) Dip: 66.40° Field: 51904 nT
Magnetic North is 7.55 degrees West of True North (at 23/Aug/2021)
Grid North is 0.15 degrees East of True North
To correct azimuth from True to Grid subtract 0.15 degrees
To correct azimuth from Magnetic to Grid subtract 7.70 degrees

Well Data			
Slot	Well	Wellbore	Wellpath
Slot A	Rapids Unit 1H	Rapids Unit 1H AWB	Rapids Unit 1H AWP Proj: 24085'
Slot A	Rapids Unit 1H	Rapids Unit 1H PWB	Rapids Unit 1H PWP Rev-B.0

Gyrodatta MS Gyro <17-1/2"> (100'-378') : 0.06° Inc, 100.00ft MD, 100.00ft TVD, -0.03ft VS

APS EM <12-1/4"> (378')(505'-3279') : 2.05° Inc, 505.00ft MD, 504.96ft TVD, 0.26ft VS

API: 47-095-02739-0000
BH Job #: 110974022
Rig: H&P 317
Duration: 8/26/2021-8/31/2021

APS EM <8-3/4"> (3279')(3417'-6356') : 24.57° Inc, 3417.00ft MD, 3167.65ft TVD, -630.36ft VS

Gyrodatta MS Gyro <17-1/2"> (100'-378') : 100.00ft TVD, 0.03ft S, 0.02ft W
APS EM <12-1/4"> (378')(505'-3279') : 504.96ft TVD, 0.91ft S, 3.64ft W

APS EM <8-3/4"> (3279')(3417'-6356') : 3167.65ft TVD, 892.48ft S, 681.23ft W

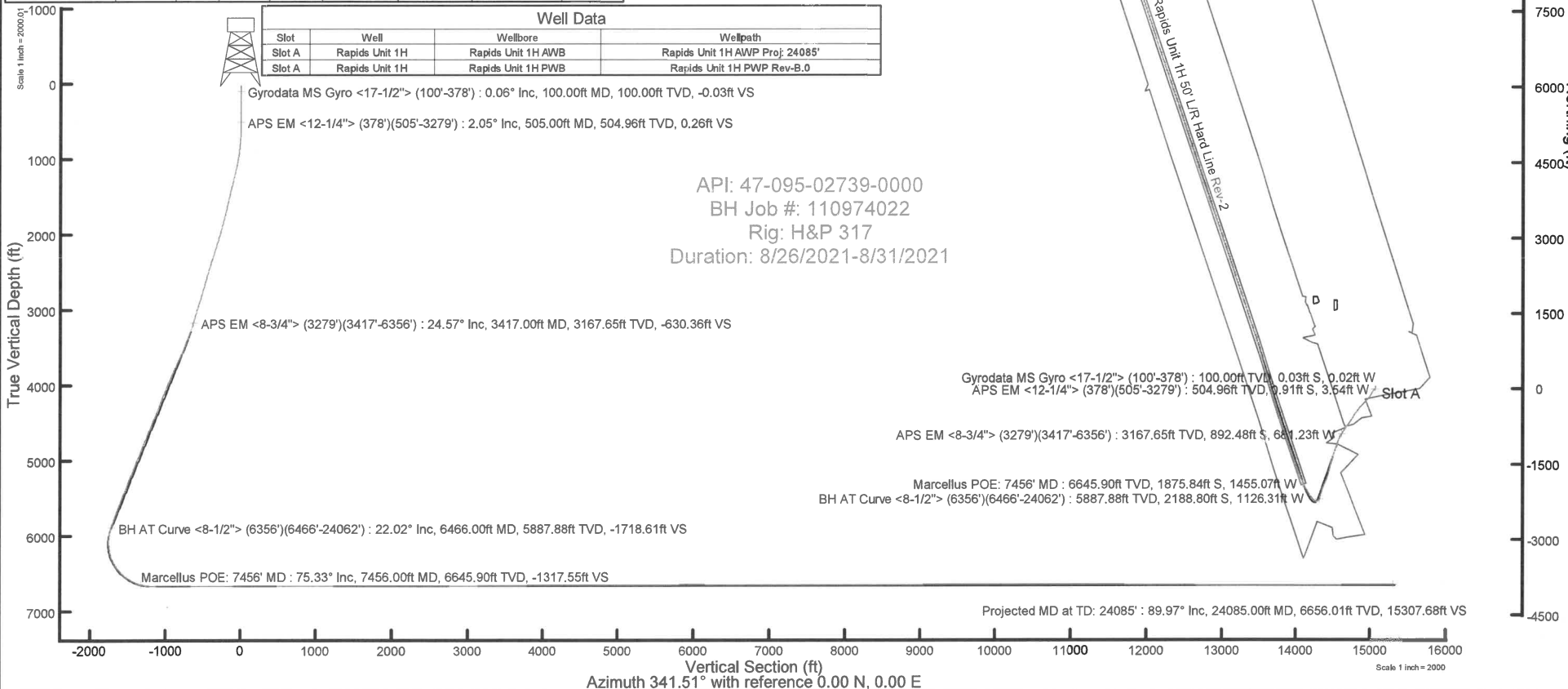
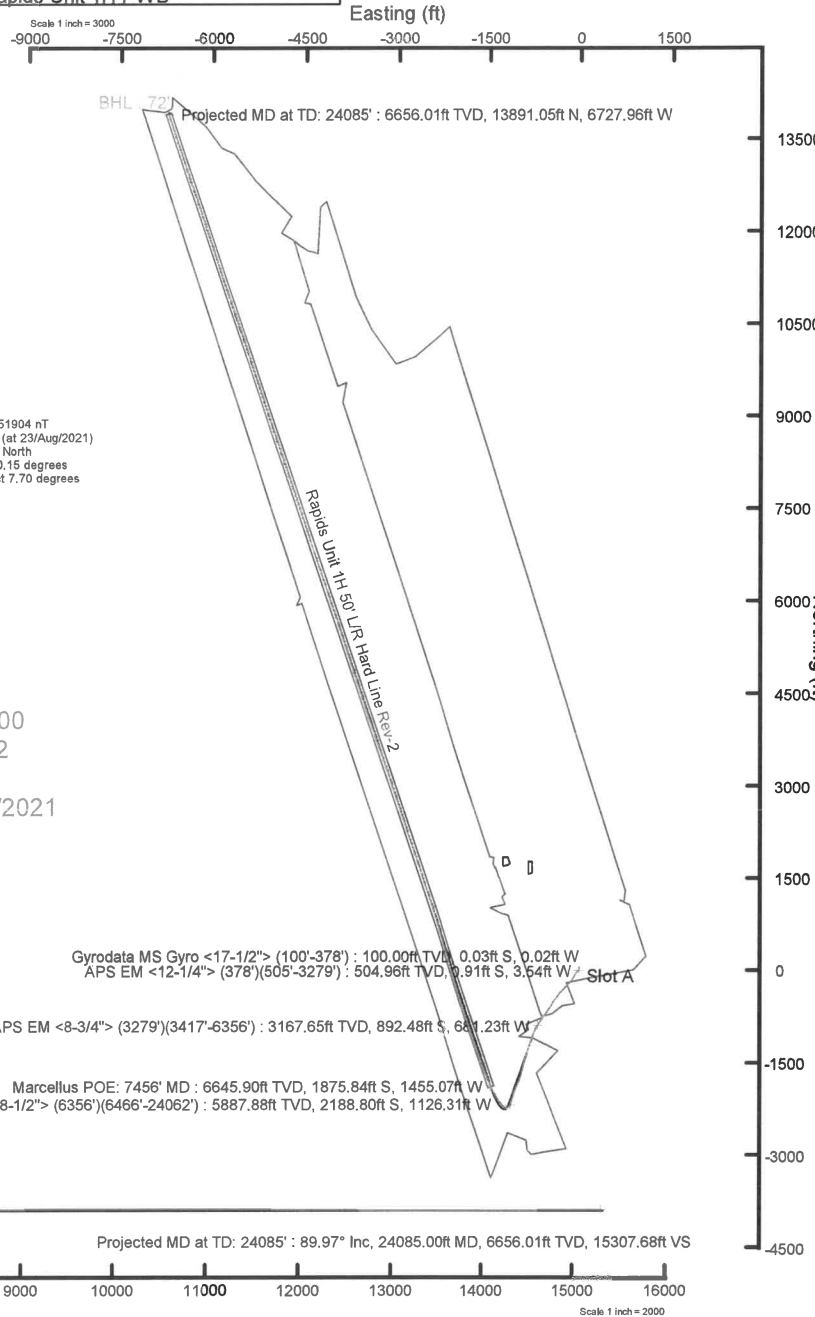
Marcellus POE: 7456' MD : 6645.90ft TVD, 1875.84ft S, 1455.07ft W
BH AT Curve <8-1/2"> (6356')(6466'-24062') : 5887.88ft TVD, 2188.80ft S, 1126.31ft W

BH AT Curve <8-1/2"> (6356')(6466'-24062') : 22.02° Inc, 6466.00ft MD, 5887.88ft TVD, -1718.61ft VS

Marcellus POE: 7456' MD : 75.33° Inc, 7456.00ft MD, 6645.90ft TVD, -1317.55ft VS

Projected MD at TD: 24085' : 89.97° Inc, 24085.00ft MD, 6656.01ft TVD, 15307.68ft VS

Vertical Section (ft)
Azimuth 341.51° with reference 0.00 N, 0.00 E





Actual Wellpath Report

Rapids Unit 1H AWP Proj: 24085'

Page 1 of 13



REFERENCE WELLPATH IDENTIFICATION			
Operator	ANTERO RESOURCES CORPORATION	Well	Rapids Unit 1H
Field	Tyler	API	47-095-02739-0000
Facility	Shepherd Pad	Wellbore	Rapids Unit 1H AWB
Slot	Slot A		

REPORT SETUP INFORMATION			
Projection System	NAD27 / UTM Zone 17 North, US feet	Software System	WellArchitect® 6.0
North Reference	Grid	User	Edsaryar
Scale	0.999605	Report Generated	03/Sep/2021 at 14:23
Convergence at slot	0.15° East	Database	WA_MPL_EASTERNUS_Defn

WELLPATH LOCATION						
	Local coordinates		Grid coordinates		Geographic coordinates	
	North[ft]	East[ft]	Easting[US ft]	Northing[US ft]	Latitude	Longitude
Slot Location	0.00	0.00	1707846.62	14305279.26	39°23'36.4150"N	80°45'40.7780"W
Facility Reference Pt			1707846.62	14305279.26	39°23'36.4150"N	80°45'40.7780"W
Field Reference Pt			0.00	0.00	0°00'0.0000"	85°29'19.3013"W

WELLPATH DATUM			
Calculation method	Minimum curvature	H&P 317 (RKB) to Facility Vertical Datum	960.50ft
Horizontal Reference Pt	Slot	H&P 317 (RKB) to Mean Sea Level	960.50ft
Vertical Reference Pt	H&P 317 (RKB)	H&P 317 (RKB) to Ground Level at Slot (Slot A)	25.50ft
MD Reference Pt	H&P 317 (RKB)	Section Origin	N 0.00, E 0.00 ft
Field Vertical Reference	Mean Sea Level	Section Azimuth	341.51°



Actual Wellpath Report

Rapids Unit 1H AWP Proj: 24085'
Page 2 of 13



REFERENCE WELLPATH IDENTIFICATION			
Operator	ANTERO RESOURCES CORPORATION	Well	Rapids Unit 1H
Field	Tyler	API	47-095-02739-0000
Facility	Shepherd Pad	Wellbore	Rapids Unit 1H AWB
Slot	Slot A		

WELLPATH DATA (261 stations) † = interpolated, ‡ = extrapolated station																
MD	Inclination	Azimuth	TVD	Vert Sect	North	East	Grid East	Grid North	Latitude	Longitude	Closure Dist	Closure Dir	DLS	Build Rate	Turn Rate	Comments
[ft]	[°]	[°]	[ft]	[ft]	[ft]	[ft]	[US ft]	[US ft]			[ft]	[°]	[°/100ft]	[°/100ft]	[°/100ft]	
0.00†	0.000	208.270	0.00	0.00	0.00	0.00	1707846.62	14305279.26	39°23'36.4150"N	80°45'40.7780"W	0.00	0.000	0.00	0.00	0.00	
25.50	0.000	208.270	25.50	0.00	0.00	0.00	1707846.62	14305279.26	39°23'36.4150"N	80°45'40.7780"W	0.00	0.000	0.00	0.00	0.00	
100.00	0.060	208.270	100.00	-0.03	-0.03	-0.02	1707846.60	14305279.23	39°23'36.4147"N	80°45'40.7782"W	0.04	208.270	0.08	0.08	0.00	Gyrodata MS Gyro <17-1/2"> (100'-378')
200.00	0.050	208.610	200.00	-0.09	-0.12	-0.06	1707846.56	14305279.14	39°23'36.4138"N	80°45'40.7788"W	0.14	208.380	0.01	-0.01	0.34	
300.00	0.250	268.500	300.00	-0.06	-0.16	-0.30	1707846.32	14305279.10	39°23'36.4134"N	80°45'40.7819"W	0.34	241.764	0.23	0.20	59.89	
378.00	0.520	271.120	378.00	0.11	-0.16	-0.83	1707845.79	14305279.10	39°23'36.4134"N	80°45'40.7885"W	0.84	259.030	0.35	0.35	3.36	
505.00	2.050	250.380	504.96	0.26	-0.91	-3.54	1707843.08	14305278.35	39°23'36.4061"N	80°45'40.8231"W	3.66	255.568	1.24	1.20	-16.33	APS EM <12-1/4"> (378')(505'-3279')
595.00	4.450	235.740	594.81	-0.72	-3.42	-7.95	1707838.68	14305275.84	39°23'36.3814"N	80°45'40.8793"W	8.65	246.723	2.80	2.67	-16.27	
685.00	6.560	221.570	684.40	-4.24	-9.23	-14.24	1707832.38	14305270.03	39°23'36.3241"N	80°45'40.9597"W	16.97	237.054	2.77	2.34	-15.74	
776.00	9.070	220.330	774.54	-10.55	-18.59	-22.34	1707824.29	14305260.68	39°23'36.2319"N	80°45'41.0631"W	29.06	230.231	2.76	2.76	-1.36	
867.00	11.990	221.320	864.00	-19.01	-31.16	-33.22	1707813.41	14305248.11	39°23'36.1079"N	80°45'41.2022"W	45.55	226.835	3.21	3.21	1.09	
957.00	14.750	223.390	951.55	-29.12	-46.51	-47.27	1707799.37	14305232.77	39°23'35.9566"N	80°45'41.3816"W	66.31	225.463	3.11	3.07	2.30	
1047.00	17.330	213.490	1038.06	-42.78	-66.02	-62.54	1707784.11	14305213.27	39°23'35.7641"N	80°45'41.5768"W	90.94	223.449	4.17	2.87	-11.00	
1142.00	19.490	209.710	1128.20	-62.06	-91.59	-78.20	1707768.45	14305187.71	39°23'35.5118"N	80°45'41.7772"W	120.43	220.493	2.60	2.27	-3.98	
1237.00	20.500	212.420	1217.47	-83.11	-119.40	-94.98	1707751.68	14305159.91	39°23'35.2374"N	80°45'41.9918"W	152.57	218.501	1.44	1.06	2.85	
1332.00	22.330	216.910	1305.91	-103.85	-147.87	-114.74	1707731.93	14305131.44	39°23'34.9565"N	80°45'42.2444"W	187.17	217.808	2.58	1.93	4.73	
1427.00	24.560	218.520	1393.07	-124.85	-177.76	-137.87	1707708.80	14305101.58	39°23'34.6618"N	80°45'42.5401"W	224.96	217.799	2.44	2.35	1.69	
1522.00	26.150	226.430	1478.94	-144.48	-207.64	-165.35	1707681.34	14305071.70	39°23'34.3671"N	80°45'42.8910"W	265.43	218.531	3.94	1.67	8.33	
1617.00	26.300	220.730	1564.17	-164.13	-238.02	-194.25	1707652.44	14305041.33	39°23'34.0676"N	80°45'43.2602"W	307.23	219.218	2.66	0.16	-6.00	
1712.00	26.650	224.320	1649.21	-184.64	-269.22	-222.87	1707623.84	14305010.15	39°23'33.7600"N	80°45'43.6258"W	349.50	219.620	1.72	0.37	3.78	
1806.00	28.180	223.550	1732.66	-204.68	-300.39	-252.90	1707593.83	14304978.99	39°23'33.4527"N	80°45'44.0093"W	392.67	220.094	1.67	1.63	-0.82	
1901.00	27.850	222.110	1816.53	-226.09	-333.11	-283.23	1707563.50	14304946.28	39°23'33.1301"N	80°45'44.3967"W	437.24	220.373	0.79	-0.35	-1.52	
1996.00	27.830	219.600	1900.53	-248.71	-366.66	-312.25	1707534.50	14304912.75	39°23'32.7993"N	80°45'44.7674"W	481.60	220.418	1.23	-0.02	-2.64	
2091.00	28.410	218.710	1984.32	-272.67	-401.38	-340.51	1707506.24	14304878.04	39°23'32.4568"N	80°45'45.1287"W	526.36	220.310	0.75	0.61	-0.94	
2186.00	28.450	217.640	2067.86	-297.52	-436.93	-368.47	1707478.30	14304842.50	39°23'32.1062"N	80°45'45.4859"W	571.56	220.141	0.54	0.04	-1.13	
2281.00	27.470	214.760	2151.78	-323.25	-472.86	-394.78	1707452.00	14304806.59	39°23'31.7518"N	80°45'45.8223"W	615.99	219.858	1.76	-1.03	-3.03	
2375.00	27.270	214.280	2235.25	-349.25	-508.46	-419.27	1707427.52	14304771.00	39°23'31.4005"N	80°45'46.1354"W	659.03	219.509	0.32	-0.21	-0.51	
2470.00	28.050	214.140	2319.40	-375.97	-544.93	-444.07	1707402.73	14304734.54	39°23'31.0407"N	80°45'46.4524"W	702.95	219.177	0.82	0.82	-0.15	
2565.00	27.260	213.320	2403.54	-402.98	-581.60	-468.55	1707378.25	14304697.89	39°23'30.6790"N	80°45'46.7655"W	746.86	218.856	0.92	-0.83	-0.86	
2660.00	27.130	214.620	2488.04	-429.44	-617.61	-492.81	1707354.01	14304661.90	39°23'30.3237"N	80°45'47.0757"W	790.13	218.588	0.64	-0.14	1.37	



Actual Wellpath Report

Rapids Unit 1H AWP Proj: 24085'
Page 3 of 13



REFERENCE WELLPATH IDENTIFICATION			
Operator	ANTERO RESOURCES CORPORATION	Well	Rapids Unit 1H
Field	Tyler	API	47-095-02739-0000
Facility	Shepherd Pad	Wellbore	Rapids Unit 1H AWB
Slot	Slot A		

WELLPATH DATA (261 stations)																
MD	Inclination	Azimuth	TVD	Vert Sect	North	East	Grid East	Grid North	Latitude	Longitude	Closure Dist	Closure Dir	DLS	Build Rate	Turn Rate	Comments
[ft]	[°]	[°]	[ft]	[ft]	[ft]	[ft]	[US ft]	[US ft]			[ft]	[°]	[°/100ft]	[°/100ft]	[°/100ft]	
2755.00	27.120	215.200	2572.59	-455.26	-653.12	-517.60	1707329.23	14304626.39	39°23'29.9733"N	80°45'47.3926"W	833.35	218.397	0.28	-0.01	0.61	
2850.00	26.230	215.070	2657.48	-480.55	-688.00	-542.14	1707304.69	14304591.53	39°23'29.6292"N	80°45'47.7064"W	875.94	218.238	0.94	-0.94	-0.14	
2944.00	26.180	214.530	2741.82	-505.36	-722.09	-565.83	1707281.01	14304557.46	39°23'29.2930"N	80°45'48.0093"W	917.37	218.082	0.26	-0.05	-0.57	
3039.00	26.310	214.250	2827.03	-530.72	-756.75	-589.56	1707257.29	14304522.81	39°23'28.9510"N	80°45'48.3126"W	959.30	217.921	0.19	0.14	-0.29	
3134.00	26.800	214.920	2912.00	-556.23	-791.72	-613.67	1707233.20	14304487.86	39°23'28.6060"N	80°45'48.6209"W	1001.70	217.780	0.60	0.52	0.71	
3229.00	25.530	214.860	2997.27	-581.22	-826.08	-637.63	1707209.24	14304453.51	39°23'28.2670"N	80°45'48.9272"W	1043.54	217.664	1.34	-1.34	-0.06	
3279.00	25.180	214.320	3042.45	-594.08	-843.70	-649.79	1707197.09	14304435.89	39°23'28.0932"N	80°45'49.0826"W	1064.92	217.602	0.84	-0.70	-1.08	
3417.00	24.570	211.260	3167.65	-630.36	-892.48	-681.23	1707165.66	14304387.14	39°23'27.6119"N	80°45'49.4847"W	1122.76	217.354	1.03	-0.44	-2.22	APS EM <8-3/4"> (3279')(3417'-6356')
3511.00	27.530	210.180	3252.10	-657.34	-927.97	-702.29	1707144.60	14304351.66	39°23'27.2617"N	80°45'49.7542"W	1163.76	217.119	3.19	3.15	-1.15	
3606.00	27.810	207.320	3336.23	-687.29	-966.64	-723.50	1707123.40	14304313.00	39°23'26.8800"N	80°45'50.0257"W	1207.41	216.814	1.43	0.29	-3.01	
3701.00	28.190	205.190	3420.12	-718.97	-1006.63	-743.23	1707103.69	14304273.02	39°23'26.4852"N	80°45'50.2782"W	1251.28	216.439	1.13	0.40	-2.24	
3796.00	28.600	202.810	3503.69	-752.28	-1047.90	-761.59	1707085.33	14304231.78	39°23'26.0779"N	80°45'50.5135"W	1295.42	216.009	1.27	0.43	-2.51	
3891.00	29.510	200.980	3586.74	-787.42	-1090.71	-778.78	1707068.14	14304188.98	39°23'25.6552"N	80°45'50.7339"W	1340.20	215.527	1.34	0.96	-1.93	
3985.00	30.180	198.140	3668.27	-824.26	-1134.78	-794.43	1707052.50	14304144.93	39°23'25.2200"N	80°45'50.9346"W	1385.22	214.995	1.66	0.71	-3.02	
4080.00	28.750	198.110	3750.98	-861.76	-1179.19	-808.97	1707037.97	14304100.54	39°23'24.7815"N	80°45'51.1213"W	1430.01	214.452	1.51	-1.51	-0.03	
4175.00	28.890	195.070	3834.22	-899.23	-1223.07	-822.04	1707024.91	14304056.68	39°23'24.3482"N	80°45'51.2892"W	1473.65	213.905	1.55	0.15	-3.20	
4270.00	27.560	195.080	3917.92	-936.67	-1266.45	-833.72	1707013.23	14304013.31	39°23'23.9197"N	80°45'51.4394"W	1516.24	213.357	1.40	-1.40	0.01	
4365.00	27.080	198.290	4002.33	-972.30	-1308.20	-846.23	1707000.73	14303971.58	39°23'23.5073"N	80°45'51.6001"W	1558.04	212.897	1.63	-0.51	3.38	
4460.00	26.770	194.890	4087.04	-1007.49	-1349.41	-858.51	1706988.45	14303930.38	39°23'23.1004"N	80°45'51.7579"W	1599.36	212.465	1.65	-0.33	-3.58	
4554.00	26.120	197.890	4171.20	-1041.83	-1389.57	-870.31	1706976.66	14303890.25	39°23'22.7038"N	80°45'51.9095"W	1639.61	212.060	1.58	-0.69	3.19	
4649.00	25.890	200.120	4256.59	-1074.87	-1428.94	-883.87	1706963.10	14303850.89	39°23'22.3150"N	80°45'52.0835"W	1680.21	211.739	1.06	-0.24	2.35	
4744.00	25.140	196.750	4342.33	-1107.56	-1467.74	-896.82	1706950.16	14303812.10	39°23'21.9318"N	80°45'52.2498"W	1720.04	211.426	1.72	-0.79	-3.55	
4839.00	26.000	195.750	4428.02	-1141.26	-1507.11	-908.29	1706938.70	14303772.75	39°23'21.5431"N	80°45'52.3971"W	1759.65	211.076	1.01	0.91	-1.05	
4934.00	25.320	191.520	4513.66	-1176.06	-1547.06	-918.00	1706928.99	14303732.82	39°23'21.1485"N	80°45'52.5221"W	1798.92	210.684	2.06	-0.72	-4.45	
5029.00	26.640	194.230	4599.06	-1211.58	-1587.61	-927.29	1706919.70	14303692.28	39°23'20.7479"N	80°45'52.6418"W	1838.58	210.288	1.87	1.39	2.85	
5123.00	26.640	192.880	4683.08	-1247.30	-1628.58	-937.17	1706909.83	14303651.32	39°23'20.3432"N	80°45'52.7690"W	1878.98	209.918	0.64	0.00	-1.44	
5218.00	26.250	196.700	4768.15	-1282.66	-1669.47	-947.95	1706899.04	14303610.45	39°23'19.9394"N	80°45'52.9077"W	1919.83	209.589	1.84	-0.41	4.02	
5313.00	25.700	196.110	4853.55	-1316.78	-1709.38	-959.70	1706887.30	14303570.55	39°23'19.5452"N	80°45'53.0588"W	1960.36	209.311	0.64	-0.58	-0.62	
5408.00	26.210	198.490	4938.97	-1350.50	-1749.07	-972.07	1706874.93	14303530.88	39°23'19.1533"N	80°45'53.2176"W	2001.04	209.064	1.22	0.54	2.51	
5503.00	28.380	203.160	5023.40	-1384.14	-1789.73	-987.61	1706859.40	14303490.24	39°23'18.7518"N	80°45'53.4168"W	2044.14	208.891	3.21	2.28	4.92	



Actual Wellpath Report

Rapids Unit 1H AWP Proj: 24085'
Page 4 of 13



REFERENCE WELLPATH IDENTIFICATION			
Operator	ANTERO RESOURCES CORPORATION	Well	Rapids Unit 1H
Field	Tyler	API	47-095-02739-0000
Facility	Shepherd Pad	Wellbore	Rapids Unit 1H AWB
Slot	Slot A		

WELLPATH DATA (261 stations) † = interpolated, ‡ = extrapolated station																	
MD	Inclination	Azimuth	TVD	Vert Sect	North	East	Grid East	Grid North	Latitude	Longitude	Closure Dist	Closure Dir	DLS	Build Rate	Turn Rate	Comments	
[ft]	[°]	[°]	[ft]	[ft]	[ft]	[ft]	[US ft]	[US ft]			[ft]	[°]	["/100ft]	["/100ft]	["/100ft]		
5598.00	28.490	202.470	5106.94	-1418.12	-1831.43	-1005.15	1706841.87	14303448.56	39°23'18.3401"N	80°45'53.6416"W	2089.13	208.759	0.36	0.12	-0.73		
5692.00	27.820	198.570	5189.82	-1452.56	-1872.94	-1020.71	1706826.32	14303407.06	39°23'17.9302"N	80°45'53.8411"W	2133.02	208.589	2.08	-0.71	-4.15		
5787.00	27.960	202.010	5273.79	-1487.18	-1914.61	-1036.11	1706810.92	14303365.41	39°23'17.5188"N	80°45'54.0387"W	2176.98	208.421	1.70	0.15	3.62		
5882.00	27.310	202.280	5357.96	-1520.62	-1955.42	-1052.72	1706794.32	14303324.61	39°23'17.1158"N	80°45'54.2516"W	2220.79	208.296	0.70	-0.68	0.28		
5977.00	26.870	199.510	5442.54	-1554.05	-1995.83	-1068.16	1706778.89	14303284.23	39°23'16.7169"N	80°45'54.4495"W	2263.69	208.155	1.41	-0.46	-2.92		
6072.00	25.380	195.440	5527.84	-1587.86	-2035.69	-1080.75	1706766.30	14303244.38	39°23'16.3232"N	80°45'54.6112"W	2304.79	207.964	2.45	-1.57	-4.28		
6167.00	25.240	198.230	5613.72	-1620.99	-2074.56	-1092.50	1706754.55	14303205.53	39°23'15.9394"N	80°45'54.7622"W	2344.64	207.772	1.26	-0.15	2.94		
6261.00	24.480	197.180	5699.01	-1652.88	-2112.20	-1104.53	1706742.53	14303167.90	39°23'15.5677"N	80°45'54.9166"W	2383.56	207.606	0.93	-0.81	-1.12		
6356.00	22.600	193.540	5786.10	-1684.35	-2148.76	-1114.62	1706732.45	14303131.36	39°23'15.2066"N	80°45'55.0463"W	2420.64	207.417	2.50	-1.98	-3.83		
6466.00	22.020	199.090	5887.88	-1718.61	-2188.80	-1126.31	1706720.76	14303091.33	39°23'14.8112"N	80°45'55.1966"W	2461.59	207.229	1.99	-0.53	5.05	BH AT Curve <8-1/2"> (6356')(6466'-24062')	
6561.00	17.870	218.280	5977.26	-1740.75	-2217.11	-1141.19	1706705.89	14303063.03	39°23'14.5317"N	80°45'55.3870"W	2493.57	207.236	8.10	-4.37	20.20		
6655.00	16.270	242.440	6067.23	-1750.74	-2234.55	-1161.82	1706685.26	14303045.60	39°23'14.3599"N	80°45'55.6504"W	2518.54	207.472	7.68	-1.70	25.70		
6750.00	18.030	273.460	6158.19	-1747.33	-2239.83	-1188.35	1706658.74	14303040.32	39°23'14.3084"N	80°45'55.9884"W	2535.55	207.948	9.69	1.85	32.65		
6845.00	20.420	301.090	6248.07	-1729.18	-2230.36	-1217.28	1706629.82	14303049.78	39°23'14.4027"N	80°45'56.3566"W	2540.92	208.625	9.80	2.52	29.08		
6866.00†	21.942	304.764	6267.65	-1723.25	-2226.23	-1223.64	1706623.46	14303053.91	39°23'14.4437"N	80°45'56.4375"W	2540.36	208.795	9.61	7.25	17.50	Sycamore: 6866' MD	
6940.00	27.790	314.470	6334.79	-1696.77	-2206.24	-1247.34	1706599.77	14303073.90	39°23'14.6419"N	80°45'56.7386"W	2534.43	209.483	9.61	7.90	13.12		
7035.00	35.640	319.510	6415.55	-1651.30	-2169.61	-1281.18	1706565.95	14303110.51	39°23'15.0048"N	80°45'57.1684"W	2519.65	210.562	8.71	8.26	5.31		
7063.00†	38.473	321.197	6437.90	-1635.57	-2156.62	-1291.93	1706555.20	14303123.50	39°23'15.1335"N	80°45'57.3049"W	2513.98	210.924	10.75	10.12	6.03	Middlesex: 7063' MD	
7130.00	45.330	324.500	6487.74	-1593.18	-2120.93	-1318.86	1706528.28	14303159.17	39°23'15.4869"N	80°45'57.6468"W	2497.55	211.875	10.75	10.23	4.93		
7224.00	54.590	327.900	6548.16	-1523.83	-2061.13	-1358.72	1706488.44	14303218.95	39°23'16.0789"N	80°45'58.1524"W	2468.68	213.393	10.23	9.85	3.62		
7258.00†	57.565	329.555	6567.13	-1496.32	-2037.02	-1373.36	1706473.80	14303243.05	39°23'16.3176"N	80°45'58.3381"W	2456.74	213.988	9.64	8.75	4.87	Burkett: 7258' MD	
7316.00†	62.684	332.143	6596.02	-1446.91	-1993.10	-1397.82	1706449.35	14303286.95	39°23'16.7523"N	80°45'58.6482"W	2434.41	215.043	9.64	8.83	4.46	Tully: 7316' MD	
7319.00	62.950	332.270	6597.39	-1444.28	-1990.74	-1399.07	1706448.11	14303289.31	39°23'16.7757"N	80°45'58.6639"W	2433.19	215.099	9.64	8.87	4.23		
7414.00	71.700	334.980	6633.98	-1357.53	-1912.26	-1437.91	1706409.28	14303367.75	39°23'17.5523"N	80°45'59.1560"W	2392.56	216.941	9.58	9.21	2.85		
7456.00†	75.334	334.551	6645.90	-1317.55	-1875.84	-1455.07	1706392.12	14303404.16	39°23'17.9127"N	80°45'59.3735"W	2374.03	217.800	8.71	8.65	-1.02	Marcellus POE: 7456' MD	
7509.00	79.920	334.030	6657.25	-1266.20	-1829.21	-1477.53	1706369.68	14303450.78	39°23'18.3742"N	80°45'59.6579"W	2351.40	218.929	8.71	8.65	-0.98		
7603.00	87.040	338.230	6667.92	-1173.30	-1743.87	-1515.26	1706331.96	14303536.08	39°23'19.2186"N	80°46'0.1357"W	2310.22	220.988	8.78	7.57	4.47		
7698.00	89.380	338.040	6670.89	-1078.52	-1655.75	-1550.62	1706296.61	14303624.16	39°23'20.0904"N	80°46'0.5832"W	2268.47	223.122	2.47	2.46	-0.20		
7793.00	90.520	341.570	6670.97	-983.58	-1566.61	-1583.41	1706263.83	14303713.27	39°23'20.9723"N	80°46'0.9979"W	2227.43	225.306	3.90	1.20	3.72		
7888.00	90.400	341.210	6670.21	-888.58	-1476.58	-1613.73	1706233.53	14303803.27	39°23'21.8629"N	80°46'1.3811"W	2187.33	227.541	0.40	-0.13	-0.38		



Actual Wellpath Report

Rapids Unit 1H AWP Proj: 24085'
Page 5 of 13



REFERENCE WELLPATH IDENTIFICATION			
Operator	ANTERO RESOURCES CORPORATION	Well	Rapids Unit 1H
Field	Tyler	API	47-095-02739-0000
Facility	Shepherd Pad	Wellbore	Rapids Unit 1H AWP
Slot	Slot A		

WELLPATH DATA (261 stations)																	
MD [ft]	Inclination [°]	Azimuth [°]	TVD [ft]	Vert Sect [ft]	North [ft]	East [ft]	Grid East [US ft]	Grid North [US ft]	Latitude	Longitude	Closure Dist [ft]	Closure Dir [°]	DLS [°/100ft]	Build Rate [°/100ft]	Turn Rate [°/100ft]	Comments	
7984.00	89.940	340.580	6669.92	-792.59	-1385.87	-1645.15	1706202.12	14303893.94	39°23'22.7602"N	80°46'1.7783"W	2151.08	229.889	0.81	-0.48	-0.66		
8079.00	90.120	340.850	6669.87	-697.60	-1296.20	-1676.53	1706170.76	14303983.58	39°23'23.6473"N	80°46'2.1749"W	2119.17	232.291	0.34	0.19	0.28		
8174.00	90.340	341.100	6669.49	-602.60	-1206.39	-1707.49	1706139.80	14304073.35	39°23'24.5357"N	80°46'2.5664"W	2090.67	234.758	0.35	0.23	0.26		
8268.00	89.910	341.700	6669.29	-508.60	-1117.30	-1737.48	1706109.83	14304162.40	39°23'25.4170"N	80°46'2.9454"W	2065.72	237.257	0.79	-0.46	0.64		
8363.00	90.120	341.050	6669.26	-413.60	-1027.28	-1767.82	1706079.51	14304252.39	39°23'26.3075"N	80°46'3.3288"W	2044.62	239.839	0.72	0.22	-0.68		
8458.00	90.090	341.960	6669.09	-318.60	-937.18	-1797.95	1706049.38	14304342.45	39°23'27.1987"N	80°46'3.7097"W	2027.55	242.469	0.96	-0.03	0.96		
8553.00	89.820	340.220	6669.16	-223.61	-847.31	-1828.74	1706018.61	14304432.28	39°23'28.0877"N	80°46'4.0989"W	2015.50	245.140	1.85	-0.28	-1.83		
8647.00	89.630	339.900	6669.61	-129.64	-758.95	-1860.80	1705986.56	14304520.61	39°23'28.9619"N	80°46'4.5043"W	2009.62	247.811	0.40	-0.20	-0.34		
8742.00	89.350	341.490	6670.46	-34.66	-669.30	-1892.20	1705955.17	14304610.23	39°23'29.8487"N	80°46'4.9014"W	2007.08	250.521	1.70	-0.29	1.67		
8837.00	90.280	342.500	6670.77	60.34	-578.95	-1921.56	1705925.82	14304700.54	39°23'30.7424"N	80°46'5.2724"W	2006.89	253.233	1.45	0.98	1.06		
8932.00	90.180	342.340	6670.39	155.32	-488.39	-1950.26	1705897.14	14304791.06	39°23'31.6382"N	80°46'5.6349"W	2010.48	255.941	0.20	-0.11	-0.17		
9027.00	89.880	341.870	6670.34	250.32	-397.99	-1979.45	1705867.96	14304881.43	39°23'32.5325"N	80°46'6.0038"W	2019.06	258.632	0.59	-0.32	-0.49		
9121.00	90.220	342.550	6670.25	344.31	-308.48	-2008.17	1705839.25	14304970.90	39°23'33.4178"N	80°46'6.3667"W	2031.72	261.267	0.81	0.36	0.72		
9216.00	90.120	342.510	6669.97	439.29	-217.87	-2036.69	1705810.74	14305061.48	39°23'34.3141"N	80°46'6.7270"W	2048.31	263.894	0.11	-0.11	-0.04		
9311.00	90.250	342.510	6669.67	534.28	-127.26	-2065.24	1705782.20	14305152.05	39°23'35.2104"N	80°46'7.0877"W	2069.15	266.474	0.14	0.14	0.00		
9406.00	90.090	342.340	6669.38	629.27	-36.69	-2093.92	1705753.53	14305242.58	39°23'36.1062"N	80°46'7.4501"W	2094.24	268.996	0.25	-0.17	-0.18		
9500.00	90.000	342.350	6669.31	723.26	52.88	-2122.43	1705725.03	14305332.12	39°23'36.9922"N	80°46'7.8103"W	2123.09	271.427	0.10	-0.10	0.01		
9595.00	90.250	342.600	6669.10	818.24	143.47	-2151.04	1705696.44	14305422.67	39°23'37.8883"N	80°46'8.1717"W	2155.82	273.816	0.37	0.26	0.26		
9690.00	90.060	342.360	6668.85	913.23	234.06	-2179.64	1705667.85	14305513.23	39°23'38.7844"N	80°46'8.5330"W	2192.17	276.129	0.32	-0.20	-0.25		
9785.00	89.720	342.080	6669.03	1008.22	324.52	-2208.65	1705638.85	14305603.66	39°23'39.6792"N	80°46'8.8996"W	2232.36	278.359	0.46	-0.36	-0.29		
9880.00	89.970	342.700	6669.28	1103.21	415.07	-2237.39	1705610.12	14305694.17	39°23'40.5749"N	80°46'9.2627"W	2275.56	280.510	0.70	0.26	0.65		
9974.00	89.660	342.330	6669.59	1197.19	504.73	-2265.63	1705581.89	14305783.79	39°23'41.4617"N	80°46'9.6195"W	2321.17	282.559	0.51	-0.33	-0.39		
10069.00	89.630	342.370	6670.18	1292.18	595.25	-2294.43	1705553.10	14305874.28	39°23'42.3571"N	80°46'9.9835"W	2370.39	284.544	0.05	-0.03	0.04		
10164.00	89.850	342.430	6670.61	1387.17	685.81	-2323.16	1705524.38	14305964.79	39°23'43.2528"N	80°46'10.3464"W	2422.27	286.447	0.24	0.23	0.06		
10259.00	89.690	342.290	6670.99	1482.16	776.34	-2351.95	1705495.61	14306055.29	39°23'44.1483"N	80°46'10.7102"W	2476.76	288.267	0.22	-0.17	-0.15		
10354.00	89.380	342.180	6671.76	1577.15	866.81	-2380.93	1705466.63	14306145.72	39°23'45.0432"N	80°46'11.0764"W	2533.81	290.005	0.35	-0.33	-0.12		
10448.00	89.750	342.430	6672.47	1671.13	956.36	-2409.50	1705438.07	14306235.24	39°23'45.9290"N	80°46'11.4374"W	2592.36	291.649	0.48	0.39	0.27		
10543.00	89.750	342.260	6672.89	1766.12	1046.88	-2438.31	1705409.27	14306325.72	39°23'46.8244"N	80°46'11.8015"W	2653.55	293.236	0.18	0.00	-0.18		
10638.00	89.660	342.320	6673.38	1861.11	1137.38	-2467.21	1705380.39	14306416.19	39°23'47.7196"N	80°46'12.1667"W	2716.76	294.750	0.11	-0.09	0.06		
10733.00	89.780	341.020	6673.84	1956.11	1227.55	-2497.09	1705350.52	14306506.33	39°23'48.6116"N	80°46'12.5443"W	2782.50	296.178	1.37	0.13	-1.37		



Actual Wellpath Report

Rapids Unit 1H AWP Proj: 24085'
Page 6 of 13



REFERENCE WELLPATH IDENTIFICATION			
Operator	ANTERO RESOURCES CORPORATION	Well	Rapids Unit 1H
Field	Tyler	API	47-095-02739-0000
Facility	Shepherd Pad	Wellbore	Rapids Unit 1H AWB
Slot	Slot A		

WELLPATH DATA (261 stations)																
MD (ft)	Inclination (°)	Azimuth (°)	TVD (ft)	Vert Sect (ft)	North (ft)	East (ft)	Grid East (US ft)	Grid North (US ft)	Latitude	Longitude	Closure Dist (ft)	Closure Dir (°)	DLS (°/100ft)	Build Rate (°/100ft)	Turn Rate (°/100ft)	Comments
10828.00	90.090	341.550	6673.95	2051.11	1317.53	-2527.57	1705320.05	14306596.27	39°23'49.5016"N	80°46'12.9296"W	2850.35	297.531	0.65	0.33	0.56	
10922.00	90.060	340.740	6673.83	2145.11	1406.49	-2557.95	1705289.69	14306685.19	39°23'50.3816"N	80°46'13.3137"W	2919.13	298.804	0.86	-0.03	-0.86	
11017.00	90.090	341.720	6673.70	2240.10	1496.43	-2588.51	1705259.13	14306775.10	39°23'51.2713"N	80°46'13.7002"W	2989.94	300.032	1.03	0.03	1.03	
11112.00	90.090	341.330	6673.55	2335.10	1586.54	-2618.62	1705229.04	14306865.17	39°23'52.1626"N	80°46'14.0807"W	3061.74	301.210	0.41	0.00	-0.41	
11206.00	90.090	341.480	6673.41	2429.10	1675.63	-2648.59	1705199.08	14306954.22	39°23'53.0439"N	80°46'14.4597"W	3134.13	302.319	0.16	0.00	0.16	
11300.00	90.340	341.800	6673.05	2523.10	1764.84	-2678.20	1705169.48	14307043.40	39°23'53.9264"N	80°46'14.8339"W	3207.40	303.383	0.43	0.27	0.34	
11394.00	90.520	341.680	6672.35	2617.10	1854.11	-2707.65	1705140.04	14307132.63	39°23'54.8094"N	80°46'15.2062"W	3281.63	304.402	0.23	0.19	-0.13	
11488.00	91.050	341.290	6671.06	2711.09	1943.23	-2737.50	1705110.21	14307221.72	39°23'55.6910"N	80°46'15.5835"W	3357.09	305.369	0.70	0.56	-0.41	
11583.00	92.090	341.850	6668.46	2806.05	2033.32	-2767.52	1705080.19	14307311.78	39°23'56.5822"N	80°46'15.9631"W	3434.18	306.305	1.24	1.09	0.59	
11677.00	90.860	341.870	6666.04	2900.02	2122.62	-2796.78	1705050.95	14307401.04	39°23'57.4655"N	80°46'16.3328"W	3511.05	307.197	1.31	-1.31	0.02	
11771.00	90.680	341.190	6664.77	2994.01	2211.77	-2826.56	1705021.19	14307490.15	39°23'58.3474"N	80°46'16.7093"W	3589.06	308.043	0.75	-0.19	-0.72	
11865.00	90.680	341.030	6663.66	3088.00	2300.70	-2856.99	1704990.77	14307579.05	39°23'59.2271"N	80°46'17.0940"W	3668.19	308.844	0.17	0.00	-0.17	
11960.00	90.590	341.000	6662.61	3182.99	2390.53	-2887.89	1704959.88	14307668.84	39°24'0.1157"N	80°46'17.4848"W	3748.94	309.617	0.10	-0.09	-0.03	
12054.00	90.740	341.400	6661.51	3276.98	2479.51	-2918.18	1704929.60	14307757.78	39°24'0.9958"N	80°46'17.8678"W	3829.33	310.354	0.45	0.16	0.43	
12149.00	90.580	341.310	6660.42	3371.98	2569.52	-2948.55	1704899.24	14307847.76	39°24'1.8862"N	80°46'18.2518"W	3911.06	311.071	0.19	-0.17	-0.09	
12244.00	90.860	341.620	6659.23	3466.97	2659.58	-2978.75	1704869.05	14307937.78	39°24'2.7771"N	80°46'18.6335"W	3993.28	311.760	0.44	0.29	0.33	
12338.00	90.400	341.620	6658.19	3560.96	2748.78	-3008.39	1704839.43	14308026.95	39°24'3.6594"N	80°46'19.0082"W	4075.07	312.418	0.49	-0.49	0.00	
12433.00	90.340	341.790	6657.58	3655.96	2838.98	-3038.21	1704809.62	14308117.11	39°24'4.5516"N	80°46'19.3852"W	4158.18	313.058	0.19	-0.06	0.18	
12528.00	90.550	341.990	6656.84	3750.95	2929.27	-3067.74	1704780.10	14308207.36	39°24'5.4448"N	80°46'19.7584"W	4241.65	313.677	0.31	0.22	0.21	
12622.00	90.340	341.510	6656.11	3844.95	3018.53	-3097.17	1704750.68	14308296.60	39°24'6.3278"N	80°46'20.1306"W	4324.82	314.263	0.56	-0.22	-0.51	
12717.00	90.340	341.490	6655.55	3939.95	3108.62	-3127.32	1704720.55	14308386.65	39°24'7.2189"N	80°46'20.5116"W	4409.49	314.828	0.02	0.00	-0.02	
12811.00	90.250	341.270	6655.06	4033.95	3197.70	-3157.33	1704690.54	14308475.69	39°24'8.1001"N	80°46'20.8911"W	4493.78	315.364	0.25	-0.10	-0.23	
12906.00	90.580	341.820	6654.38	4128.94	3287.81	-3187.40	1704660.48	14308565.77	39°24'8.9915"N	80°46'21.2713"W	4579.22	315.888	0.68	0.35	0.58	
13000.00	90.250	341.240	6653.69	4222.94	3376.97	-3217.18	1704630.72	14308654.89	39°24'9.8734"N	80°46'21.6478"W	4664.14	316.388	0.71	-0.35	-0.62	
13095.00	90.150	340.940	6653.36	4317.94	3466.84	-3247.97	1704599.94	14308744.73	39°24'10.7624"N	80°46'22.0371"W	4750.61	316.867	0.33	-0.11	-0.32	
13189.00	90.090	340.840	6653.17	4411.93	3555.66	-3278.74	1704569.18	14308833.51	39°24'11.6410"N	80°46'22.4263"W	4836.62	317.320	0.12	-0.06	-0.11	
13284.00	90.310	341.170	6652.83	4506.93	3645.49	-3309.66	1704538.27	14308923.30	39°24'12.5296"N	80°46'22.8173"W	4923.76	317.764	0.42	0.23	0.35	
13378.00	90.120	340.560	6652.48	4600.92	3734.29	-3340.47	1704507.47	14309012.07	39°24'13.4080"N	80°46'23.2070"W	5010.36	318.186	0.68	-0.20	-0.65	
13473.00	90.220	341.390	6652.20	4695.91	3824.10	-3371.44	1704476.52	14309101.84	39°24'14.2964"N	80°46'23.5986"W	5098.08	318.600	0.88	0.11	0.87	
13567.00	89.420	340.760	6652.50	4789.91	3913.02	-3401.93	1704446.04	14309190.73	39°24'15.1760"N	80°46'23.9842"W	5185.06	318.997	1.08	-0.85	-0.67	



Actual Wellpath Report

Rapids Unit 1H AWP Proj: 24085'
Page 7 of 13



REFERENCE WELLPATH IDENTIFICATION			
Operator	ANTERO RESOURCES CORPORATION	Well	Rapids Unit 1H
Field	Tyler	API	47-095-02739-0000
Facility	Shepherd Pad	Wellbore	Rapids Unit 1H AWP
Slot	Slot A		

WELLPATH DATA (261 stations)																
MD [ft]	Inclination [°]	Azimuth [°]	TVD [ft]	Vert Sect [ft]	North [ft]	East [ft]	Grid East [US ft]	Grid North [US ft]	Latitude	Longitude	Closure Dist [ft]	Closure Dir [°]	DLS [°/100ft]	Build Rate [°/100ft]	Turn Rate [°/100ft]	Comments
13661.00	90.280	341.600	6652.74	4883.91	4001.99	-3432.25	1704415.73	14309279.66	39°24'16.0561"N	80°46'24.3676"W	5272.22	319.382	1.28	0.91	0.89	
13756.00	90.000	340.600	6652.51	4978.90	4091.87	-3463.02	1704384.97	14309369.50	39°24'16.9452"N	80°46'24.7568"W	5360.59	319.758	1.09	-0.29	-1.05	
13850.00	90.430	341.530	6652.16	5072.90	4180.78	-3493.53	1704354.48	14309458.38	39°24'17.8247"N	80°46'25.1425"W	5448.27	320.117	1.09	0.46	0.99	
13944.00	90.460	342.080	6651.43	5166.89	4270.08	-3522.88	1704325.14	14309547.64	39°24'18.7080"N	80°46'25.5135"W	5535.72	320.477	0.59	0.03	0.59	
14039.00	90.150	342.170	6650.92	5261.89	4360.49	-3552.03	1704295.99	14309638.02	39°24'19.6023"N	80°46'25.8821"W	5624.13	320.834	0.34	-0.33	0.09	
14133.00	89.820	341.590	6650.95	5355.88	4449.83	-3581.27	1704266.77	14309727.32	39°24'20.4860"N	80°46'26.2517"W	5711.96	321.173	0.71	-0.35	-0.62	
14227.00	90.550	341.730	6650.64	5449.88	4539.05	-3610.85	1704237.21	14309816.51	39°24'21.3686"N	80°46'26.6257"W	5800.10	321.498	0.79	0.78	0.15	
14321.00	89.230	340.510	6650.82	5543.88	4627.99	-3641.26	1704206.80	14309905.41	39°24'22.2484"N	80°46'27.0103"W	5888.73	321.805	1.91	-1.40	-1.30	
14416.00	90.740	342.330	6650.85	5638.87	4718.03	-3671.53	1704176.55	14309995.42	39°24'23.1390"N	80°46'27.3930"W	5978.29	322.110	2.49	1.59	1.92	
14510.00	90.180	341.400	6650.09	5732.86	4807.36	-3700.79	1704147.30	14310084.71	39°24'24.0226"N	80°46'27.7629"W	6066.84	322.410	1.15	-0.60	-0.99	
14604.00	90.250	341.450	6649.74	5826.86	4896.46	-3730.73	1704117.37	14310173.78	39°24'24.9040"N	80°46'28.1416"W	6155.78	322.695	0.09	0.07	0.05	
14699.00	90.340	342.170	6649.25	5921.86	4986.71	-3760.39	1704087.73	14310263.99	39°24'25.7967"N	80°46'28.5165"W	6245.62	322.981	0.76	0.09	0.76	
14793.00	89.720	341.730	6649.20	6015.86	5076.09	-3789.51	1704058.61	14310353.33	39°24'26.6808"N	80°46'28.8847"W	6334.59	323.257	0.81	-0.66	-0.47	
14887.00	89.820	342.160	6649.58	6109.85	5165.46	-3818.64	1704029.49	14310442.67	39°24'27.5648"N	80°46'29.2530"W	6423.70	323.526	0.47	0.11	0.46	
14982.00	89.450	341.910	6650.18	6204.85	5255.82	-3847.94	1704000.20	14310533.00	39°24'28.4586"N	80°46'29.6234"W	6513.86	323.791	0.47	-0.39	-0.26	
15076.00	89.510	341.660	6651.04	6298.84	5345.11	-3877.33	1703970.83	14310622.25	39°24'29.3418"N	80°46'29.9949"W	6603.32	324.043	0.27	0.06	-0.27	
15170.00	89.420	341.240	6651.91	6392.84	5434.22	-3907.23	1703940.94	14310711.32	39°24'30.2233"N	80°46'30.3730"W	6693.07	324.284	0.46	-0.10	-0.45	
15265.00	89.660	342.020	6652.68	6487.83	5524.38	-3937.17	1703911.01	14310801.44	39°24'31.1151"N	80°46'30.7516"W	6783.81	324.523	0.86	0.25	0.82	
15359.00	89.820	341.960	6653.10	6581.83	5613.77	-3966.23	1703881.96	14310890.80	39°24'31.9993"N	80°46'31.1190"W	6873.53	324.758	0.18	0.17	-0.06	
15453.00	89.600	341.670	6653.58	6675.83	5703.07	-3995.57	1703852.64	14310980.07	39°24'32.8827"N	80°46'31.4899"W	6963.45	324.985	0.39	-0.23	-0.31	
15547.00	89.910	341.640	6653.98	6769.82	5792.29	-4025.15	1703823.07	14311069.26	39°24'33.7652"N	80°46'31.8640"W	7053.55	325.204	0.33	0.33	-0.03	
15642.00	89.570	341.340	6654.41	6864.82	5882.38	-4055.31	1703792.92	14311159.31	39°24'34.6563"N	80°46'32.2454"W	7144.78	325.418	0.48	-0.36	-0.32	
15736.00	90.090	341.230	6654.69	6958.82	5971.41	-4085.47	1703762.77	14311248.30	39°24'35.5370"N	80°46'32.6268"W	7235.25	325.621	0.57	0.55	-0.12	
15831.00	90.430	341.810	6654.26	7053.82	6061.51	-4115.58	1703732.67	14311338.36	39°24'36.4282"N	80°46'33.0076"W	7326.66	325.825	0.71	0.36	0.61	
15925.00	90.180	342.030	6653.76	7147.82	6150.87	-4144.76	1703703.51	14311427.68	39°24'37.3121"N	80°46'33.3765"W	7417.02	326.026	0.35	-0.27	0.23	
16020.00	90.400	341.940	6653.28	7242.81	6241.21	-4174.14	1703674.14	14311517.99	39°24'38.2057"N	80°46'33.7479"W	7508.40	326.225	0.25	0.23	-0.09	
16115.00	90.250	341.820	6652.74	7337.81	6331.49	-4203.68	1703644.61	14311608.24	39°24'39.0988"N	80°46'34.1215"W	7599.92	326.419	0.20	-0.16	-0.13	
16209.00	90.150	341.630	6652.41	7431.81	6420.75	-4233.16	1703615.14	14311697.46	39°24'39.9817"N	80°46'34.4942"W	7690.62	326.603	0.23	-0.11	-0.20	
16303.00	90.250	341.640	6652.08	7525.81	6509.96	-4262.77	1703585.54	14311786.64	39°24'40.8641"N	80°46'34.8687"W	7781.44	326.783	0.11	0.11	0.01	
16398.00	90.030	341.520	6651.85	7620.81	6600.10	-4292.79	1703555.53	14311876.74	39°24'41.7557"N	80°46'35.2483"W	7873.33	326.959	0.26	-0.23	-0.13	



Actual Wellpath Report

Rapids Unit 1H AWP Proj: 24085'
Page 8 of 13



REFERENCE WELLPATH IDENTIFICATION			
Operator	ANTERO RESOURCES CORPORATION	Well	Rapids Unit 1H
Field	Tyler	API	47-095-02739-0000
Facility	Shepherd Pad	Wellbore	Rapids Unit 1H AWB
Slot	Slot A		

WELLPATH DATA (261 stations)																
MD [ft]	Inclination [°]	Azimuth [°]	TVD [ft]	Vert Sect [ft]	North [ft]	East [ft]	Grid East [US ft]	Grid North [US ft]	Latitude	Longitude	Closure Dist [ft]	Closure Dir [°]	DLS [°/100ft]	Build Rate [°/100ft]	Turn Rate [°/100ft]	Comments
16493.00	90.460	341.760	6651.45	7715.80	6690.26	-4322.71	1703525.62	14311966.86	39°24'42.6475"N	80°46'35.6267"W	7965.26	327.133	0.52	0.45	0.25	
16587.00	90.370	341.770	6650.77	7809.80	6779.54	-4352.13	1703496.22	14312056.11	39°24'43.5306"N	80°46'35.9986"W	8056.25	327.302	0.10	-0.10	0.01	
16681.00	90.400	342.000	6650.13	7903.80	6868.88	-4381.35	1703467.00	14312145.41	39°24'44.4143"N	80°46'36.3682"W	8147.25	327.468	0.25	0.03	0.24	
16776.00	89.780	341.530	6649.98	7998.79	6959.10	-4411.08	1703437.29	14312235.60	39°24'45.3068"N	80°46'36.7441"W	8239.34	327.631	0.82	-0.65	-0.49	
16870.00	89.970	341.610	6650.19	8092.79	7048.28	-4440.80	1703407.58	14312324.75	39°24'46.1889"N	80°46'37.1199"W	8330.60	327.787	0.22	0.20	0.09	
16964.00	90.060	341.730	6650.16	8186.79	7137.51	-4470.36	1703378.03	14312413.94	39°24'47.0716"N	80°46'37.4937"W	8421.89	327.940	0.16	0.10	0.13	
17058.00	89.820	341.550	6650.26	8280.79	7226.73	-4499.97	1703348.44	14312503.12	39°24'47.9541"N	80°46'37.8682"W	8513.24	328.090	0.32	-0.26	-0.19	
17153.00	90.120	341.970	6650.31	8375.79	7316.95	-4529.70	1703318.71	14312593.31	39°24'48.8465"N	80°46'38.2442"W	8605.58	328.240	0.54	0.32	0.44	
17247.00	89.910	341.640	6650.29	8469.79	7406.25	-4559.06	1703289.37	14312682.58	39°24'49.7298"N	80°46'38.6153"W	8696.99	328.385	0.42	-0.22	-0.35	
17341.00	89.880	341.420	6650.46	8563.79	7495.41	-4588.83	1703259.61	14312771.70	39°24'50.6118"N	80°46'38.9920"W	8788.55	328.524	0.24	-0.03	-0.23	
17435.00	90.150	341.840	6650.44	8657.79	7584.62	-4618.46	1703229.99	14312860.87	39°24'51.4942"N	80°46'39.3666"W	8880.13	328.662	0.53	0.29	0.45	
17530.00	89.970	341.650	6650.34	8752.79	7674.84	-4648.22	1703200.25	14312951.05	39°24'52.3866"N	80°46'39.7429"W	8972.69	328.799	0.28	-0.19	-0.20	
17624.00	90.180	341.310	6650.21	8846.79	7763.97	-4678.08	1703170.40	14313040.15	39°24'53.2682"N	80°46'40.1205"W	9064.42	328.930	0.43	0.22	-0.36	
17718.00	90.060	341.890	6650.02	8940.79	7853.17	-4707.75	1703140.74	14313129.31	39°24'54.1505"N	80°46'40.4958"W	9156.15	329.059	0.63	-0.13	0.62	
17813.00	90.220	341.860	6649.78	9035.79	7943.45	-4737.30	1703111.20	14313219.56	39°24'55.0436"N	80°46'40.8695"W	9248.81	329.189	0.17	0.17	-0.03	
17907.00	90.340	341.920	6649.33	9129.78	8032.79	-4766.52	1703081.99	14313308.87	39°24'55.9273"N	80°46'41.2390"W	9340.53	329.316	0.14	0.13	0.06	
18002.00	89.820	341.520	6649.19	9224.78	8123.00	-4796.32	1703052.21	14313399.04	39°24'56.8196"N	80°46'41.6158"W	9433.33	329.440	0.69	-0.55	-0.42	
18096.00	90.430	342.260	6648.99	9318.78	8212.34	-4825.53	1703023.00	14313488.34	39°24'57.7033"N	80°46'41.9853"W	9525.14	329.562	1.02	0.65	0.79	
18190.00	90.520	341.290	6648.21	9412.77	8301.62	-4854.93	1702993.61	14313577.59	39°24'58.5864"N	80°46'42.3571"W	9617.03	329.680	1.04	0.10	-1.03	
18284.00	90.520	341.980	6647.36	9506.77	8390.83	-4884.55	1702964.01	14313666.76	39°24'59.4688"N	80°46'42.7316"W	9709.01	329.795	0.73	0.00	0.73	
18379.00	90.060	341.580	6646.87	9601.77	8481.06	-4914.25	1702934.32	14313756.96	39°25'0.3614"N	80°46'43.1073"W	9801.95	329.910	0.64	-0.48	-0.42	
18473.00	90.220	341.480	6646.64	9695.76	8570.22	-4944.03	1702904.55	14313846.08	39°25'1.2433"N	80°46'43.4839"W	9894.05	330.020	0.20	0.17	-0.11	
18567.00	90.250	341.700	6646.26	9789.76	8659.41	-4973.72	1702874.88	14313935.24	39°25'2.1255"N	80°46'43.8594"W	9986.15	330.128	0.24	0.03	0.23	
18662.00	90.250	341.700	6645.84	9884.76	8749.61	-5003.54	1702845.06	14314025.39	39°25'3.0176"N	80°46'44.2367"W	10079.24	330.237	0.00	0.00	0.00	
18756.00	90.120	341.580	6645.54	9978.76	8838.82	-5033.15	1702815.46	14314114.57	39°25'3.9001"N	80°46'44.6111"W	10171.40	330.341	0.19	-0.14	-0.13	
18850.00	90.250	341.630	6645.24	10072.76	8928.02	-5062.82	1702785.81	14314203.73	39°25'4.7824"N	80°46'44.9863"W	10263.61	330.444	0.15	0.14	0.05	
18945.00	89.450	341.390	6645.49	10167.76	9018.11	-5092.94	1702755.70	14314293.79	39°25'5.6736"N	80°46'45.3674"W	10356.85	330.545	0.88	-0.84	-0.25	
19040.00	89.880	341.570	6646.04	10262.76	9108.19	-5123.12	1702725.53	14314383.84	39°25'6.5646"N	80°46'45.7491"W	10450.14	330.643	0.49	0.45	0.19	
19134.00	89.600	341.090	6646.47	10356.76	9197.24	-5153.21	1702695.45	14314472.85	39°25'7.4455"N	80°46'46.1297"W	10542.53	330.738	0.59	-0.30	-0.51	
19228.00	89.660	341.270	6647.08	10450.75	9286.21	-5183.53	1702665.14	14314561.79	39°25'8.3256"N	80°46'46.5133"W	10634.98	330.830	0.20	0.06	0.19	



Actual Wellpath Report

Rapids Unit 1H AWP Proj: 24085'
Page 9 of 13



REFERENCE WELLPATH IDENTIFICATION			
Operator	ANTERO RESOURCES CORPORATION	Well	Rapids Unit 1H
Field	Tyler	API	47-095-02739-0000
Facility	Shepherd Pad	Wellbore	Rapids Unit 1H AWB
Slot	Slot A		

WELLPATH DATA (261 stations)																
MD [ft]	Inclination [°]	Azimuth [°]	TVD [ft]	Vert Sect [ft]	North [ft]	East [ft]	Grid East [US ft]	Grid North [US ft]	Latitude	Longitude	Closure Dist [ft]	Closure Dir [°]	DLS [°/100ft]	Build Rate [°/100ft]	Turn Rate [°/100ft]	Comments
19323.00	90.120	341.570	6647.26	10545.75	9376.26	-5213.80	1702634.89	14314651.80	39°25'9.2163"N	80°46'46.8962"W	10728.38	330.923	0.58	0.48	0.32	
19417.00	90.030	341.700	6647.13	10639.75	9465.48	-5243.42	1702605.28	14314740.98	39°25'10.0987"N	80°46'47.2708"W	10820.75	331.016	0.17	-0.10	0.14	
19512.00	89.850	341.690	6647.23	10734.75	9555.67	-5273.26	1702575.46	14314831.14	39°25'10.9909"N	80°46'47.6482"W	10914.12	331.108	0.19	-0.19	-0.01	
19606.00	89.780	341.580	6647.54	10828.75	9644.88	-5302.87	1702545.85	14314920.31	39°25'11.8733"N	80°46'48.0228"W	11006.55	331.197	0.14	-0.07	-0.12	
19701.00	89.880	341.560	6647.82	10923.75	9735.01	-5332.91	1702515.83	14315010.40	39°25'12.7648"N	80°46'48.4027"W	11100.01	331.286	0.11	0.11	-0.02	
19795.00	89.750	341.540	6648.12	11017.75	9824.17	-5362.66	1702486.09	14315099.54	39°25'13.6468"N	80°46'48.7790"W	11192.52	331.372	0.14	-0.14	-0.02	
19889.00	89.750	341.390	6648.53	11111.75	9913.30	-5392.54	1702456.22	14315188.62	39°25'14.5284"N	80°46'49.1569"W	11285.08	331.455	0.16	0.00	-0.16	
19984.00	89.780	341.600	6648.92	11206.75	10003.39	-5422.69	1702426.08	14315278.68	39°25'15.4195"N	80°46'49.5384"W	11378.63	331.539	0.22	0.03	0.22	
20078.00	89.780	341.500	6649.28	11300.75	10092.55	-5452.44	1702396.35	14315367.81	39°25'16.3015"N	80°46'49.9147"W	11471.21	331.620	0.11	0.00	-0.11	
20173.00	90.090	342.050	6649.39	11395.75	10182.79	-5482.15	1702366.65	14315458.01	39°25'17.1940"N	80°46'50.2904"W	11564.73	331.703	0.66	0.33	0.58	
20267.00	89.910	341.510	6649.39	11489.74	10272.07	-5511.54	1702337.27	14315547.26	39°25'18.0772"N	80°46'50.6622"W	11657.30	331.784	0.61	-0.19	-0.57	
20362.00	90.060	341.420	6649.42	11584.74	10362.15	-5541.74	1702307.08	14315637.29	39°25'18.9681"N	80°46'51.0442"W	11750.95	331.862	0.18	0.16	-0.09	
20456.00	89.750	341.210	6649.57	11678.74	10451.19	-5571.85	1702276.98	14315726.30	39°25'19.8489"N	80°46'51.4252"W	11843.69	331.937	0.40	-0.33	-0.22	
20550.00	89.660	341.590	6650.06	11772.74	10540.28	-5601.83	1702247.01	14315815.36	39°25'20.7301"N	80°46'51.8045"W	11936.42	332.011	0.42	-0.10	0.40	
20645.00	89.630	341.530	6650.64	11867.74	10630.40	-5631.88	1702216.97	14315905.44	39°25'21.6216"N	80°46'52.1846"W	12030.11	332.086	0.07	-0.03	-0.06	
20739.00	89.720	341.300	6651.18	11961.74	10719.50	-5661.84	1702187.03	14315994.50	39°25'22.5029"N	80°46'52.5636"W	12122.87	332.158	0.26	0.10	-0.24	
20833.00	89.780	341.340	6651.59	12055.74	10808.54	-5691.95	1702156.93	14316083.52	39°25'23.3837"N	80°46'52.9445"W	12215.68	332.228	0.08	0.06	0.04	
20927.00	89.720	341.490	6652.00	12149.74	10897.64	-5721.90	1702126.99	14316172.58	39°25'24.2650"N	80°46'53.3235"W	12308.48	332.298	0.17	-0.06	0.16	
21021.00	89.660	341.210	6652.51	12243.73	10986.70	-5751.96	1702096.94	14316261.61	39°25'25.1460"N	80°46'53.7038"W	12401.32	332.366	0.30	-0.06	-0.30	
21116.00	89.480	341.440	6653.22	12338.73	11076.70	-5782.38	1702066.53	14316351.57	39°25'26.0362"N	80°46'54.0886"W	12495.17	332.434	0.31	-0.19	0.24	
21210.00	89.450	341.290	6654.10	12432.73	11165.77	-5812.42	1702036.51	14316440.60	39°25'26.9172"N	80°46'54.4686"W	12588.03	332.500	0.16	-0.03	-0.16	
21305.00	89.350	341.600	6655.09	12527.72	11255.83	-5842.65	1702006.29	14316530.62	39°25'27.8080"N	80°46'54.8510"W	12681.88	332.567	0.34	-0.11	0.33	
21399.00	89.380	341.290	6656.13	12621.71	11344.93	-5872.56	1701976.39	14316619.69	39°25'28.6894"N	80°46'55.2294"W	12774.76	332.632	0.33	0.03	-0.33	
21493.00	89.420	341.190	6657.12	12715.71	11433.93	-5902.79	1701946.18	14316708.66	39°25'29.5698"N	80°46'55.6119"W	12867.70	332.695	0.11	0.04	-0.11	
21587.00	89.630	341.870	6657.90	12809.70	11523.09	-5932.56	1701916.41	14316797.78	39°25'30.4516"N	80°46'55.9886"W	12960.59	332.759	0.76	0.22	0.72	
21681.00	89.600	341.690	6658.53	12903.70	11612.37	-5961.95	1701887.03	14316887.03	39°25'31.3348"N	80°46'56.3604"W	13053.43	332.823	0.19	-0.03	-0.19	
21776.00	90.310	341.690	6658.60	12998.70	11702.56	-5991.80	1701857.20	14316977.18	39°25'32.2269"N	80°46'56.7379"W	13147.31	332.887	0.75	0.75	0.00	
21870.00	89.820	341.400	6658.50	13092.70	11791.73	-6021.56	1701827.45	14317066.31	39°25'33.1088"N	80°46'57.1144"W	13240.24	332.948	0.61	-0.52	-0.31	
21965.00	90.060	341.490	6658.60	13187.70	11881.79	-6051.79	1701797.24	14317156.34	39°25'33.9997"N	80°46'57.4969"W	13334.21	333.009	0.27	0.25	0.09	
22059.00	90.000	341.290	6658.55	13281.70	11970.88	-6081.78	1701767.25	14317245.39	39°25'34.8809"N	80°46'57.8764"W	13427.21	333.067	0.22	-0.06	-0.21	



Actual Wellpath Report

Rapids Unit 1H AWP Proj: 24085'
Page 10 of 13



REFERENCE WELLPATH IDENTIFICATION			
Operator	ANTERO RESOURCES CORPORATION	Well	Rapids Unit 1H
Field	Tyler	API	47-095-02739-0000
Facility	Shepherd Pad	Wellbore	Rapids Unit 1H AWB
Slot	Slot A		

WELLPATH DATA (261 stations) † = interpolated, ‡ = extrapolated station																
MD (ft)	Inclination (°)	Azimuth (°)	TVD (ft)	Vert Sect (ft)	North (ft)	East (ft)	Grid East (US ft)	Grid North (US ft)	Latitude	Longitude	Closure Dist (ft)	Closure Dir (°)	DLS (°/100ft)	Build Rate (°/100ft)	Turn Rate (°/100ft)	Comments
22153.00	89.850	341.330	6658.67	13375.70	12059.92	-6111.91	1701737.14	14317334.39	39°25'35.7616"N	80°46'58.2575"W	13520.25	333.124	0.17	-0.16	0.04	
22342.00	89.880	341.360	6659.12	13564.70	12238.99	-6172.36	1701676.71	14317513.39	39°25'37.5329"N	80°46'59.0224"W	13707.33	333.237	0.02	0.02	0.02	
22437.00	89.910	341.360	6659.29	13659.70	12329.00	-6202.72	1701646.36	14317603.37	39°25'38.4233"N	80°46'59.4066"W	13801.38	333.293	0.03	0.03	0.00	
22531.00	90.060	341.780	6659.31	13753.70	12418.18	-6232.44	1701616.65	14317692.52	39°25'39.3054"N	80°46'59.7826"W	13894.41	333.349	0.47	0.16	0.45	
22626.00	89.910	341.360	6659.34	13848.70	12508.31	-6262.48	1701586.63	14317782.61	39°25'40.1969"N	80°47'0.1626"W	13988.44	333.404	0.47	-0.16	-0.44	
22721.00	90.090	341.550	6659.34	13943.70	12598.38	-6292.69	1701556.43	14317872.64	39°25'41.0878"N	80°47'0.5448"W	14082.51	333.459	0.28	0.19	0.20	
22816.00	90.150	341.470	6659.14	14038.70	12688.47	-6322.82	1701526.31	14317962.70	39°25'41.9789"N	80°47'0.9260"W	14176.58	333.512	0.11	0.06	-0.08	
22911.00	90.180	341.360	6658.87	14133.69	12778.52	-6353.10	1701496.04	14318052.71	39°25'42.8696"N	80°47'1.3091"W	14270.68	333.565	0.12	0.03	-0.12	
23006.00	90.340	341.540	6658.44	14228.69	12868.58	-6383.32	1701465.83	14318142.74	39°25'43.7605"N	80°47'1.6915"W	14364.79	333.617	0.25	0.17	0.19	
23100.00	90.310	341.280	6657.90	14322.69	12957.68	-6413.28	1701435.88	14318231.79	39°25'44.6417"N	80°47'2.0707"W	14457.93	333.667	0.28	-0.03	-0.28	
23290.00	90.280	341.320	6656.92	14512.69	13137.64	-6474.20	1701374.99	14318411.69	39°25'46.4219"N	80°47'2.8415"W	14646.26	333.766	0.03	-0.02	0.02	
23385.00	90.220	341.330	6656.51	14607.69	13227.64	-6504.62	1701344.58	14318501.65	39°25'47.3121"N	80°47'3.2264"W	14740.44	333.815	0.06	-0.06	0.01	
23480.00	90.220	341.280	6656.15	14702.69	13317.63	-6535.07	1701314.14	14318591.60	39°25'48.2022"N	80°47'3.6117"W	14834.63	333.862	0.05	0.00	-0.05	
23575.00	89.880	341.280	6656.06	14797.68	13407.60	-6565.56	1701283.67	14318681.54	39°25'49.0922"N	80°47'3.9975"W	14928.84	333.910	0.36	-0.36	0.00	
23670.00	90.030	341.300	6656.14	14892.68	13497.58	-6596.03	1701253.20	14318771.49	39°25'49.9822"N	80°47'4.3831"W	15023.06	333.956	0.16	0.16	0.02	
23764.00	90.030	341.470	6656.09	14986.68	13586.66	-6626.04	1701223.21	14318860.53	39°25'50.8633"N	80°47'4.7628"W	15116.28	334.002	0.18	0.00	0.18	
23859.00	89.970	341.410	6656.09	15081.68	13676.72	-6656.28	1701192.98	14318950.56	39°25'51.7542"N	80°47'5.1454"W	15210.48	334.048	0.09	-0.06	-0.06	
23954.00	90.090	341.600	6656.04	15176.68	13766.82	-6686.41	1701162.86	14319040.61	39°25'52.6453"N	80°47'5.5268"W	15304.68	334.095	0.24	0.13	0.20	
24049.00	89.970	341.460	6655.99	15271.68	13856.92	-6716.51	1701132.78	14319130.69	39°25'53.5366"N	80°47'5.9076"W	15398.89	334.140	0.19	-0.13	-0.15	
24062.00	89.970	341.450	6655.99	15284.68	13869.25	-6720.64	1701128.64	14319143.01	39°25'53.6585"N	80°47'5.9599"W	15411.78	334.146	0.08	0.00	-0.08	
24085.00‡	89.970	341.450	6656.01	15307.68	13891.05	-6727.96	1701121.33	14319164.80	39°25'53.8742"N	80°47'6.0525"W	15434.60	334.157	0.00	0.00	0.00	Projected MD at TD: 24085'



Actual Wellpath Report

Rapids Unit 1H AWP Proj: 24085'
Page 11 of 13



REFERENCE WELLPATH IDENTIFICATION			
Operator	ANTERO RESOURCES CORPORATION	Well	Rapids Unit 1H
Field	Tyler	API	47-095-02739-0000
Facility	Shepherd Pad	Wellbore	Rapids Unit 1H AWB
Slot	Slot A		

HOLE & CASING SECTIONS - Ref Wellbore: Rapids Unit 1H AWB Ref Wellpath: Rapids Unit 1H AWP Proj: 24085'										
String/Diameter	Start MD	End MD	Interval	Start TVD	End TVD	Start N/S	Start E/W	End N/S	End E/W	
	[ft]	[ft]	[ft]	[ft]	[ft]	[ft]	[ft]	[ft]	[ft]	[ft]
20in Conductor	25.50	126.00	100.50	25.50	126.00	0.00	0.00	-0.06	-0.03	
17.5in Open Hole	126.00	399.00	273.00	126.00	399.00	-0.06	-0.03	-0.18	-1.06	
13.375in Casing Surface	25.50	388.00	362.50	25.50	388.00	0.00	0.00	-0.16	-0.93	
12.25in Open Hole	399.00	3357.00	2958.00	399.00	3113.14	-0.18	-1.06	-871.20	-667.97	
9.625in Casing Intermediate	25.50	3338.00	3312.50	25.50	3095.90	0.00	0.00	-864.49	-663.63	
8.75in Open Hole	3357.00	6420.00	3063.00	3113.14	5845.27	-871.20	-667.97	-2172.31	-1120.98	
8.5in Open Hole	6420.00	24085.00	17665.00	5845.27	6656.01	-2172.31	-1120.98	13891.05	-6727.96	
5.5in Casing Production	25.50	24085.00	24059.50	25.50	6656.01	0.00	0.00	13891.05	-6727.96	

TARGETS								
Name	TVD	North	East	Grid East	Grid North	Latitude	Longitude	Shape
	[ft]	[ft]	[ft]	[US ft]	[US ft]			
Rapids Unit 1H POE Rev-2	6646.00	-1899.94	-1448.02	1706399.18	14303380.07	39°23'17.6743"N	80°45'59.2844"W	point
Rapids Unit 1H BHL Rev-2	6669.00	13911.08	-6736.26	1701113.03	14319184.82	39°25'54.0723"N	80°47'6.1576"W	point
Rapids Unit 1H LP Rev-2	6669.00	-1747.53	-1498.99	1706348.22	14303532.42	39°23'19.1820"N	80°45'59.9286"W	point
Rapids Unit 1H 50' L/R Hard Line Rev-2	7000.00	6005.57	-4092.14	1703756.10	14311282.45	39°24'35.8748"N	80°46'32.7107"W	rectangle
	2D Rectangle 16672 x 100.							



Actual Wellpath Report
 Rapids Unit 1H AWP Proj: 24085'
 Page 12 of 13



REFERENCE WELLPATH IDENTIFICATION			
Operator	ANTERO RESOURCES CORPORATION	Well	Rapids Unit 1H
Field	Tyler	API	47-095-02739-0000
Facility	Shepherd Pad	Wellbore	Rapids Unit 1H AWB
Slot	Slot A		

WELLPATH COMPOSITION - Ref Wellbore: Rapids Unit 1H AWB Ref Wellpath: Rapids Unit 1H AWP Proj: 24085'						
Start MD [ft]	End MD [ft]	Positional Uncertainty Model	Log Name/Comment	Wellbore	Survey Date	
25.50	378.00	Gyrodata 2015 - GC+WIR+DPIPE	01_Gyrodata MS Gyro <17-1/2"> (100'-378')	Rapids Unit 1H AWB	23/Jul/2021	
378.00	3279.00	BH NaviTrak (2019) (Axial Corr+HRGM)	02_APS EM <12-1/4"> (378')(505'-3279')	Rapids Unit 1H AWB	23/Jul/2021	
3279.00	6356.00	BH NaviTrak (2019) (Axial Corr+HRGM)	03_APS EM <8-3/4"> (3279')(3417'-6356')	Rapids Unit 1H AWB	23/Aug/2021	
6356.00	24085.00	BH AutoTrak Curve/eXpress (2019) (HRGM, Short spacing)	04_BH AT Curve <8-1/2"> (6356')(6466'-24062')	Rapids Unit 1H AWB	23/Aug/2021	



Actual Wellpath Report

Rapids Unit 1H AWP Proj: 24085'

Page 13 of 13



REFERENCE WELLPATH IDENTIFICATION

Operator	ANTERO RESOURCES CORPORATION	Well	Rapids Unit 1H
Field	Tyler	API	47-095-02739-0000
Facility	Shepherd Pad	Wellbore	Rapids Unit 1H AWB
Slot	Slot A		

COMMENTS

Wellpath general comments

API: 47-095-02739-0000

BH Job #: 110974022

Rig: H&P 317

Duration: 8/26/2021-8/31/2021

Gyrodatta MS Gyro <17-1/2"> (100'-378')

APS EM <12-1/4"> (378')(505'-3279')

APS EM <8-3/4"> (3279')(3417'-6356')

BH AT Curve <8-1/2"> (6356')(6466'-24062')

Sycamore: 6866' MD

Middlesex: 7063' MD

Burkett: 7258' MD

Tully: 7316' MD

Marcellus POE: 7456' MD

Projected MD at TD: 24085'