



ANTERO RESOURCES CORPORATION



Location: Tyler County, WV
 Field: Tyler
 Facility: Thin Air Pad

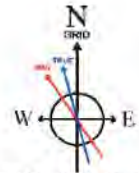
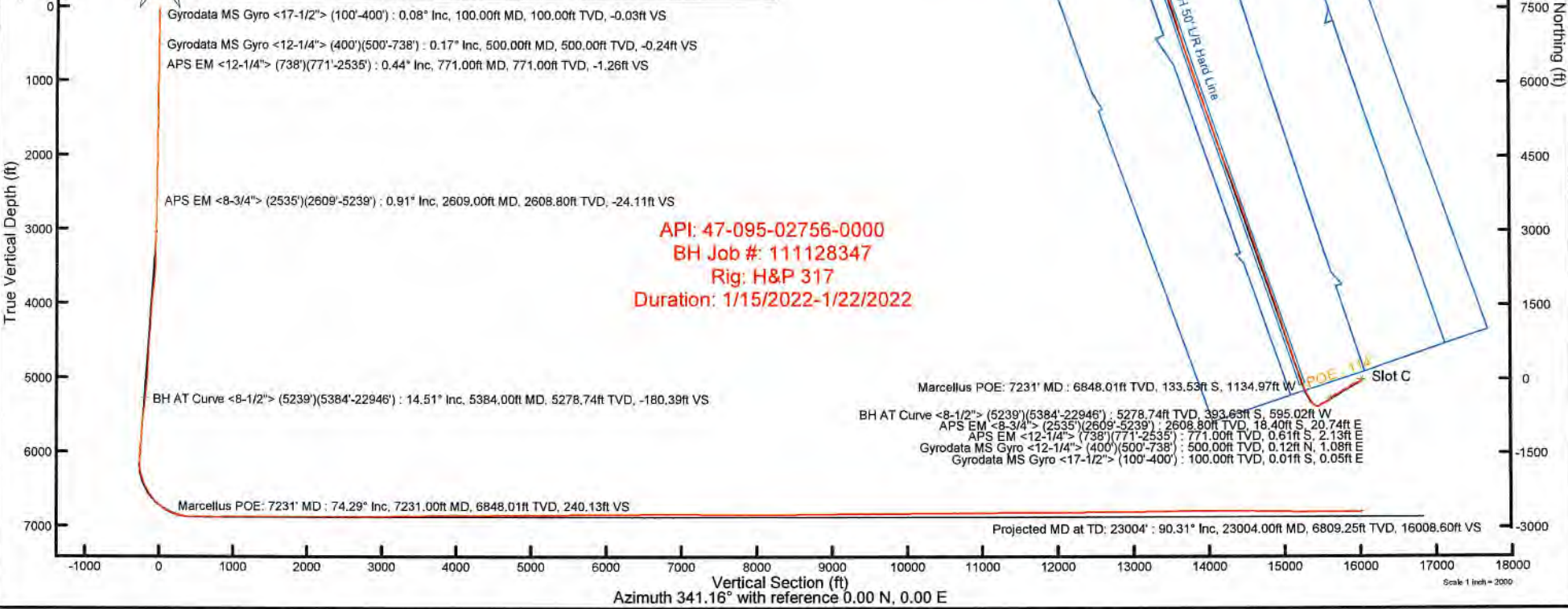
Slot: Slot C
 Well: Maroon Unit 1H
 Wellbore: Maroon Unit 1H PWB

Plot reference wellpath is Maroon Unit 1H PWB Rev-C.1	Grid System: NAD27 / UTM Zone 17 North, US feet
True vertical depths are referenced to H&P 317 (RKB)	North Reference: Grid north
Reference wellpath measured depths are referenced to H&P 317 (RKB)	Scale: True distance
H&P 317 (RKB) to Mean Sea Level: 1225.5 feet	Coordinates are in feet referenced to Slot
Mean Sea Level to Ground level (At Slot Slot C): -1200 feet	Depths are in feet
Offset wellpath MDs are referenced to each path's defined MD datum	Created by: adkayor on 2023-02-06, Database: WA_MPL_EASTERHUS_Dat

Location Information				
Facility Name	Grid East (US ft)	Grid North (US ft)	Latitude	Longitude
Thin Air Pad	1698787.140	14354225.910	39°31'40.5880"N	80°47'34.7850"W
Slot	Local N (ft)	Local E (ft)	Grid East (US ft)	Grid North (US ft)
Slot C	-49.45	-35.97	1698753.180	14354176.470
			Latitude	Longitude
			39°31'40.1000"N	80°47'35.2200"W
Comment: Maroon Unit 1H				
H&P 317 (RKB) to Ground level (At Slot Slot C)				25.5ft
Mean Sea Level to Ground level (At Slot Slot C)				-1200ft
H&P 317 (RKB) to Mean Sea Level				1225.5ft

Well Profile Data								
Design Comment	MD (ft)	Inc (")	Az (°)	TVD (ft)	Local N (ft)	Local E (ft)	DLS (°/100ft)	VS (ft)
Tie On	2535.00	0.940	130.450	2534.81	-17.65	19.81	0.23	-23.10
Proj. to Bottom	2612.00	0.940	130.450	2611.80	-18.47	20.77	0.00	-24.18
KOP 1	2692.00	0.940	130.450	2691.79	-19.32	21.77	0.00	-25.31
End of 3D Arc	3290.17	17.639	238.069	3289.67	-70.86	-52.02	3.00	-50.26
Curve KOP	6262.02	17.639	238.069	6131.87	-550.34	-821.41	0.00	-255.60
POE	7271.34	74.514	341.159	6854.00	-105.34	-1157.85	8.00	274.20
Landing Pt.	7464.91	90.000	341.159	6880.00	75.63	-1219.61	8.00	465.43
BHL	23821.27	90.000	341.159	6880.00	15555.58	-6501.82	0.00	16821.79

Well Data			
Slot	Well	Wellbore	Wellpath
Slot C	Maroon Unit 1H	Maroon Unit 1H AWB	Maroon Unit 1H AWP Proj: 23004'
Slot C	Maroon Unit 1H	Maroon Unit 1H PWB	Maroon Unit 1H PWB Rev-C.1



User specified (HDGM) Dip: 65.45° Field: 51787 nT
 Magnetic North is 7.53 degrees West of True North (at 13/Jan/2022)
 Grid North is 0.13 degrees East of True North
 To correct azimuth from True to Grid subtract 0.13 degrees
 To correct azimuth from Magnetic to Grid subtract 7.66 degrees



Actual Wellpath Report

Maroon Unit 1H AWP Proj: 23004'

Page 1 of 12



REFERENCE WELLPATH IDENTIFICATION

Operator	ANTERO RESOURCES CORPORATION	Well	Maroon Unit 1H
Field	Tyler	API	47-095-02756-0000
Facility	Thin Air Pad	Wellbore	Maroon Unit 1H AWB
Slot	Slot C		

REPORT SETUP INFORMATION

Projection System	NAD27 / UTM Zone 17 North, US feet	Software System	WellArchitect® 6.0
North Reference	Grid	User	Edsaryar
Scale	0.999604	Report Generated	06/Feb/2022 at 16:55
Convergence at slot	0.13° East	Database	WA_MPL_EASTERNUS_Defn

WELLPATH LOCATION

	Local coordinates		Grid coordinates		Geographic coordinates	
	North[ft]	East[ft]	Easting[US ft]	Northing[US ft]	Latitude	Longitude
Slot Location	-49.46	-33.97	1698753.18	14354176.47	39°31'40.1000"N	80°47'35.2200"W
Facility Reference Pt			1698787.14	14354225.91	39°31'40.5880"N	80°47'34.7850"W
Field Reference Pt			0.00	0.00	0°00'0.0000"	85°29'19.3013"W

WELLPATH DATUM

Calculation method	Minimum curvature	H&P 317 (RKB) to Facility Vertical Datum	1225.50ft
Horizontal Reference Pt	Slot	H&P 317 (RKB) to Mean Sea Level	1225.50ft
Vertical Reference Pt	H&P 317 (RKB)	H&P 317 (RKB) to Ground Level at Slot (Slot C)	25.50ft
MD Reference Pt	H&P 317 (RKB)	Section Origin	N 0.00, E 0.00 ft
Field Vertical Reference	Mean Sea Level	Section Azimuth	341.16°



Actual Wellpath Report

Maroon Unit 1H AWP Proj: 23004'

Page 2 of 12



REFERENCE WELLPATH IDENTIFICATION			
Operator	ANTERO RESOURCES CORPORATION	Well	Maroon Unit 1H
Field	Tyler	API	47-095-02756-0000
Facility	Thin Air Pad	Wellbore	Maroon Unit 1H AWP
Slot	Slot C		

WELLPATH DATA (245 stations) † = interpolated, ‡ = extrapolated station																
MD	Inclination	Azimuth	TVD	Vert Sect	North	East	Grid East	Grid North	Latitude	Longitude	Closure Dist	Closure Dir	DLS	Build Rate	Turn Rate	Comments
[ft]	[°]	[°]	[ft]	[ft]	[ft]	[ft]	[US ft]	[US ft]			[ft]	[°]	["/100ft]	["/100ft]	["/100ft]	
0.00†	0.000	105.650	0.00	0.00	0.00	0.00	1698753.18	14354176.47	39°31'40.1000"N	80°47'35.2200"W	0.00	0.000	0.00	0.00	0.00	
25.50	0.000	105.650	25.50	0.00	0.00	0.00	1698753.18	14354176.47	39°31'40.1000"N	80°47'35.2200"W	0.00	0.000	0.00	0.00	0.00	
100.00	0.080	105.650	100.00	-0.03	-0.01	0.05	1698753.23	14354176.46	39°31'40.0998"N	80°47'35.2193"W	0.05	105.650	0.11	0.11	0.00	Gyrodata MS Gyro <17-1/2"> (100'-400')
200.00	0.140	68.760	200.00	-0.06	0.01	0.23	1698753.41	14354176.48	39°31'40.1001"N	80°47'35.2170"W	0.23	87.178	0.09	0.06	-36.89	
300.00	0.140	72.090	300.00	-0.06	0.09	0.46	1698753.64	14354176.56	39°31'40.1009"N	80°47'35.2141"W	0.47	78.575	0.01	0.00	3.33	
400.00	0.210	84.100	400.00	-0.10	0.15	0.76	1698753.94	14354176.82	39°31'40.1014"N	80°47'35.2103"W	0.77	78.859	0.08	0.07	12.01	
500.00	0.170	109.320	500.00	-0.24	0.12	1.08	1698754.26	14354176.59	39°31'40.1011"N	80°47'35.2062"W	1.09	83.704	0.09	-0.04	25.22	Gyrodata MS Gyro <12-1/4"> (400')(500'-738')
600.00	0.260	123.250	600.00	-0.51	-0.05	1.41	1698754.59	14354176.42	39°31'40.0994"N	80°47'35.2020"W	1.41	92.194	0.10	0.09	13.93	
700.00	0.310	125.640	700.00	-0.91	-0.34	1.82	1698755.00	14354176.13	39°31'40.0966"N	80°47'35.1968"W	1.85	100.455	0.05	0.05	2.39	
738.00	0.290	132.610	738.00	-1.07	-0.46	1.98	1698755.16	14354176.01	39°31'40.0954"N	80°47'35.1948"W	2.03	103.137	0.11	-0.05	18.34	
771.00	0.440	134.260	771.00	-1.26	-0.61	2.13	1698755.31	14354175.86	39°31'40.0939"N	80°47'35.1928"W	2.21	105.898	0.46	0.45	5.00	APS EM <12-1/4"> (738')(771'-2535')
861.00	0.540	145.470	860.99	-1.98	-1.20	2.62	1698755.79	14354175.27	39°31'40.0881"N	80°47'35.1866"W	2.88	114.582	0.15	0.11	12.46	
950.00	0.450	133.700	949.99	-2.69	-1.78	3.11	1698756.29	14354174.69	39°31'40.0823"N	80°47'35.1804"W	3.58	119.865	0.15	-0.10	-13.22	
1041.00	1.210	122.560	1040.98	-3.76	-2.55	4.17	1698757.35	14354173.92	39°31'40.0747"N	80°47'35.1668"W	4.89	121.395	0.85	0.84	-12.24	
1135.00	0.780	137.240	1134.96	-5.12	-3.55	5.45	1698758.62	14354172.92	39°31'40.0647"N	80°47'35.1506"W	6.50	123.113	0.53	-0.46	15.62	
1230.00	0.470	129.350	1229.96	-6.04	-4.27	6.19	1698759.36	14354172.20	39°31'40.0576"N	80°47'35.1412"W	7.52	124.638	0.34	-0.33	-8.31	
1325.00	0.520	131.170	1324.96	-6.75	-4.80	6.81	1698759.99	14354171.67	39°31'40.0523"N	80°47'35.1332"W	8.34	125.196	0.08	0.05	1.92	
1419.00	0.620	137.430	1418.95	-7.58	-5.46	7.48	1698760.65	14354171.01	39°31'40.0458"N	80°47'35.1247"W	9.26	126.137	0.13	0.11	6.66	
1514.00	0.760	138.750	1513.94	-8.63	-6.31	8.24	1698761.42	14354170.16	39°31'40.0374"N	80°47'35.1150"W	10.38	127.453	0.15	0.15	1.39	
1609.00	0.710	138.400	1608.94	-9.76	-7.23	9.05	1698762.22	14354169.25	39°31'40.0283"N	80°47'35.1048"W	11.58	128.617	0.05	-0.05	-0.37	
1703.00	1.150	102.550	1702.92	-10.79	-7.87	10.35	1698763.53	14354168.61	39°31'40.0220"N	80°47'35.0881"W	13.00	127.226	0.75	0.47	-38.14	
1798.00	0.850	150.930	1797.91	-11.98	-8.69	11.63	1698764.80	14354167.78	39°31'40.0138"N	80°47'35.0719"W	14.51	126.773	0.91	-0.32	50.93	
1892.00	0.850	141.170	1891.90	-13.32	-9.84	12.40	1698765.58	14354166.63	39°31'40.0024"N	80°47'35.0620"W	15.83	128.433	0.15	0.00	-10.38	
1986.00	1.000	130.770	1985.89	-14.68	-10.92	13.46	1698766.64	14354165.55	39°31'39.9917"N	80°47'35.0485"W	17.33	129.052	0.24	0.16	-11.06	
2081.00	0.980	143.740	2080.87	-16.17	-12.12	14.57	1698767.74	14354164.36	39°31'39.9799"N	80°47'35.0344"W	18.95	129.750	0.24	-0.02	13.65	
2175.00	1.080	141.740	2174.86	-17.77	-13.46	15.59	1698768.77	14354163.01	39°31'39.9666"N	80°47'35.0214"W	20.60	130.802	0.11	0.11	-2.13	
2270.00	0.860	132.920	2269.85	-19.25	-14.65	16.67	1698769.84	14354161.83	39°31'39.9548"N	80°47'35.0077"W	22.19	131.309	0.28	-0.23	-9.28	
2364.00	0.940	129.110	2363.83	-20.52	-15.62	17.78	1698770.96	14354160.86	39°31'39.9452"N	80°47'34.9935"W	23.67	131.285	0.11	0.09	-4.05	
2459.00	0.990	140.240	2458.82	-21.95	-16.74	18.91	1698772.09	14354159.74	39°31'39.9341"N	80°47'34.9791"W	25.26	131.508	0.20	0.05	11.72	
2535.00	0.940	130.450	2534.81	-23.10	-17.65	19.81	1698772.98	14354158.83	39°31'39.9251"N	80°47'34.9677"W	26.53	131.699	0.23	-0.07	-12.88	



Actual Wellpath Report

Maroon Unit 1H AWP Proj: 23004'

Page 3 of 12



REFERENCE WELLPATH IDENTIFICATION			
Operator	ANTERO RESOURCES CORPORATION	Well	Maroon Unit 1H
Field	Tyler	API	47-095-02756-0000
Facility	Thin Air Pad	Wellbore	Maroon Unit 1H AWB
Slot	Slot C		

WELLPATH DATA (245 stations)																
MD [ft]	Inclination [°]	Azimuth [°]	TVD [ft]	Vert Sect [ft]	North [ft]	East [ft]	Grid East [US ft]	Grid North [US ft]	Latitude	Longitude	Closure Dist [ft]	Closure Dir [°]	DLS [°/100ft]	Build Rate [°/100ft]	Turn Rate [°/100ft]	Comments
2609.00	0.910	127.130	2608.80	-24.11	-18.40	20.74	1698773.91	14354158.08	39°31'39.9177"N	80°47'34.9559"W	27.72	131.574	0.08	-0.04	-4.49	APS EM <8-3/4"> (2535')(2609-5239)
2706.00	2.690	223.800	2705.76	-25.79	-20.50	19.78	1698772.95	14354155.97	39°31'39.8969"N	80°47'34.9682"W	28.49	136.034	3.03	1.84	99.66	
2804.00	7.000	239.750	2803.39	-28.03	-25.17	13.02	1698766.20	14354151.31	39°31'39.8508"N	80°47'35.0545"W	28.34	152.647	4.57	4.40	16.28	
2903.00	8.540	230.680	2901.48	-31.80	-32.87	2.12	1698755.30	14354143.61	39°31'39.7750"N	80°47'35.1938"W	32.94	176.302	1.98	1.56	-9.16	
3001.00	10.290	236.640	2998.16	-36.54	-42.30	-10.82	1698742.37	14354134.19	39°31'39.6822"N	80°47'35.3593"W	43.66	194.345	2.04	1.79	6.08	
3100.00	11.080	236.050	3095.45	-41.24	-52.47	-26.09	1698727.10	14354124.02	39°31'39.5819"N	80°47'35.5545"W	58.60	206.440	0.81	0.80	-0.60	
3199.00	12.330	240.330	3192.39	-45.70	-63.02	-43.17	1698710.03	14354113.48	39°31'39.4781"N	80°47'35.7728"W	76.39	214.413	1.54	1.26	4.32	
3295.00	14.570	249.200	3285.76	-48.04	-72.38	-63.37	1698689.84	14354104.12	39°31'39.3860"N	80°47'36.0308"W	96.20	221.201	3.17	2.33	9.24	
3392.00	18.130	254.780	3378.83	-47.50	-80.68	-89.35	1698663.87	14354095.82	39°31'39.3046"N	80°47'36.3626"W	120.38	227.918	4.01	3.67	5.75	
3489.00	19.300	248.180	3470.71	-47.39	-90.60	-118.80	1698634.43	14354085.90	39°31'39.2072"N	80°47'36.7387"W	149.40	232.668	2.49	1.21	-6.80	
3586.00	19.170	243.420	3562.30	-50.36	-103.69	-147.92	1698605.32	14354072.82	39°31'39.0785"N	80°47'37.1108"W	180.64	234.971	1.62	-0.13	-4.91	
3683.00	18.910	236.770	3654.00	-56.42	-119.43	-175.32	1698577.93	14354057.09	39°31'38.9236"N	80°47'37.4608"W	212.13	235.737	2.25	-0.27	-6.86	
3780.00	18.980	229.000	3745.76	-66.27	-138.39	-200.37	1698552.89	14354038.13	39°31'38.7367"N	80°47'37.7811"W	243.52	235.368	2.60	0.07	-8.01	
3877.00	17.500	229.980	3837.88	-77.49	-158.12	-223.45	1698529.82	14354018.41	39°31'38.5423"N	80°47'38.0762"W	273.74	234.715	1.56	-1.53	1.01	
3974.00	17.250	233.000	3930.46	-87.25	-176.16	-246.10	1698507.18	14354000.38	39°31'38.3645"N	80°47'38.3658"W	302.65	234.406	0.96	-0.26	3.11	
4072.00	16.070	236.000	4024.35	-95.32	-192.49	-268.95	1698484.33	14353984.06	39°31'38.2037"N	80°47'38.6579"W	330.74	234.409	1.49	-1.20	3.06	
4168.00	16.000	241.180	4116.62	-101.09	-206.30	-291.56	1698461.73	14353970.26	39°31'38.0677"N	80°47'38.9469"W	357.16	234.719	1.49	-0.07	5.40	
4264.00	16.070	242.180	4208.88	-105.46	-218.87	-314.91	1698438.40	14353957.68	39°31'37.9439"N	80°47'39.2451"W	383.50	235.199	0.30	0.07	1.04	
4362.00	18.130	241.550	4302.54	-110.12	-232.47	-340.31	1698413.01	14353944.09	39°31'37.8101"N	80°47'39.5697"W	412.13	235.663	2.11	2.10	-0.64	
4459.00	17.910	236.060	4394.79	-116.52	-247.99	-365.95	1698387.37	14353928.58	39°31'37.6573"N	80°47'39.8975"W	442.06	235.877	1.76	-0.23	-5.66	
4557.00	17.640	232.540	4488.12	-125.19	-265.43	-390.24	1698363.09	14353911.14	39°31'37.4854"N	80°47'40.2079"W	471.96	235.778	1.13	-0.28	-3.59	
4655.00	17.180	234.700	4581.63	-134.03	-282.83	-413.84	1698339.50	14353893.76	39°31'37.3141"N	80°47'40.5096"W	501.26	235.651	0.81	-0.47	2.20	
4754.00	16.680	243.050	4676.35	-140.18	-297.72	-438.44	1698314.91	14353878.87	39°31'37.1674"N	80°47'40.8240"W	529.97	235.822	2.51	-0.51	8.43	
4850.00	17.430	245.610	4768.13	-143.52	-309.90	-463.82	1698289.54	14353866.69	39°31'37.0476"N	80°47'41.1482"W	557.82	236.251	1.11	0.78	2.67	
4949.00	17.060	240.960	4862.68	-147.52	-323.07	-490.02	1698263.35	14353853.53	39°31'36.9180"N	80°47'41.4830"W	586.94	236.603	1.44	-0.37	-4.70	
5047.00	17.850	242.420	4956.17	-152.35	-337.00	-515.90	1698237.48	14353839.60	39°31'36.7809"N	80°47'41.8136"W	616.22	236.846	0.92	0.81	1.49	
5144.00	17.050	234.250	5048.72	-158.75	-352.20	-540.63	1698212.77	14353824.41	39°31'36.6313"N	80°47'42.1296"W	645.23	236.917	2.65	-0.82	-8.42	
5239.00	17.600	232.700	5139.41	-167.35	-369.04	-563.35	1698190.05	14353807.58	39°31'36.4654"N	80°47'42.4201"W	673.47	236.772	0.76	0.58	-1.63	
5384.00	14.510	231.530	5278.74	-180.39	-393.63	-595.02	1698158.39	14353783.00	39°31'36.2230"N	80°47'42.8250"W	713.44	236.514	2.14	-2.13	-0.81	BH AT Curve <8-1/2"> (5239')(5384'-22946')
5482.00	14.370	223.720	5373.65	-190.12	-410.06	-613.04	1698140.38	14353766.58	39°31'36.0611"N	80°47'43.0554"W	737.54	236.222	1.99	-0.14	-7.97	



Actual Wellpath Report

Maroon Unit 1H AWP Proj: 23004'

Page 4 of 12



REFERENCE WELLPATH IDENTIFICATION			
Operator	ANTERO RESOURCES CORPORATION	Well	Maroon Unit 1H
Field	Tyler	API	47-095-02756-0000
Facility	Thin Air Pad	Wellbore	Maroon Unit 1H AWB
Slot	Slot C		

WELLPATH DATA (245 stations) † = interpolated, ‡ = extrapolated station																
MD	Inclination	Azimuth	TVD	Vert Sect	North	East	Grid East	Grid North	Latitude	Longitude	Closure Dist	Closure Dir	DLS	Build Rate	Turn Rate	Comments
(ft)	(°)	(°)	(ft)	(ft)	(ft)	(ft)	(US ft)	(US ft)			(ft)	(°)	("/100ft)	("/100ft)	("/100ft)	
5580.00	14.870	216.450	5468.49	-202.89	-428.96	-628.92	1698124.51	14353747.68	39°31'35.8746"N	80°47'43.2586"W	761.28	235.703	1.94	0.51	-7.42	
5678.00	16.720	237.150	5562.86	-213.47	-446.74	-648.25	1698105.19	14353729.91	39°31'35.6993"N	80°47'43.5058"W	787.28	235.427	6.01	1.89	21.12	
5772.00	20.640	238.550	5651.89	-220.36	-462.73	-673.75	1698079.70	14353713.93	39°31'35.5419"N	80°47'43.8317"W	817.35	235.519	4.20	4.17	1.49	
5871.00	20.740	239.020	5744.50	-227.86	-480.85	-703.67	1698049.79	14353695.81	39°31'35.3634"N	80°47'44.2140"W	852.27	235.653	0.20	0.10	0.47	
5967.00	20.780	239.270	5834.27	-234.94	-498.30	-732.88	1698020.59	14353678.36	39°31'35.1916"N	80°47'44.5873"W	886.24	235.787	0.10	0.04	0.26	
6064.00	20.770	239.360	5924.96	-242.00	-515.86	-762.47	1697991.02	14353660.81	39°31'35.0187"N	80°47'44.9654"W	920.58	235.919	0.03	-0.01	0.09	
6162.00	20.760	239.300	6016.60	-249.13	-533.59	-792.35	1697961.14	14353643.10	39°31'34.8443"N	80°47'45.3472"W	955.27	236.043	0.02	-0.01	-0.06	
6260.00	19.620	241.820	6108.58	-255.37	-550.22	-821.79	1697931.72	14353626.47	39°31'34.6805"N	80°47'45.7234"W	988.98	236.196	1.46	-1.16	2.57	
6357.00	18.190	265.150	6200.47	-254.35	-559.21	-851.27	1697902.24	14353617.49	39°31'34.5923"N	80°47'46.0999"W	1018.52	236.699	7.88	-1.47	24.05	
6453.00	22.420	285.730	6290.60	-240.31	-555.50	-883.88	1697869.65	14353621.19	39°31'34.6297"N	80°47'46.5160"W	1043.95	237.851	8.58	4.41	21.44	
6552.00	23.470	312.000	6382.01	-212.31	-537.15	-916.79	1697836.75	14353639.54	39°31'34.8118"N	80°47'46.9354"W	1062.56	239.634	10.32	1.06	26.54	
6650.00	27.210	326.460	6470.65	-173.55	-505.37	-943.71	1697809.85	14353671.30	39°31'35.1265"N	80°47'47.2780"W	1070.51	241.830	7.35	3.82	14.76	
6730.00†	31.876	325.416	6540.23	-135.50	-472.72	-965.82	1697787.75	14353703.94	39°31'35.4497"N	80°47'47.5592"W	1075.30	243.921	5.87	5.83	-1.30	Sycamore: 6730' MD
6746.00	32.810	325.240	6553.75	-127.27	-465.68	-970.69	1697782.88	14353710.98	39°31'35.5194"N	80°47'47.6211"W	1076.61	244.371	5.87	5.84	-1.10	
6843.00	39.130	325.180	6632.21	-72.52	-418.91	-1003.18	1697750.40	14353757.72	39°31'35.9823"N	80°47'48.0344"W	1087.13	247.335	6.52	6.52	-0.06	
6873.00†	41.351	327.402	6655.11	-53.79	-402.79	-1013.93	1697739.66	14353773.84	39°31'36.1419"N	80°47'48.1711"W	1091.00	248.334	8.81	7.40	7.41	Middlesex: 6873' MD
6941.00	46.520	331.780	6704.07	-7.59	-362.09	-1037.71	1697715.88	14353814.52	39°31'36.5447"N	80°47'48.4735"W	1099.07	250.765	8.81	7.60	6.44	
7020.00†	53.813	335.510	6754.65	52.51	-307.74	-1064.52	1697689.08	14353868.85	39°31'37.0824"N	80°47'48.8141"W	1108.11	253.876	9.92	9.23	4.72	Burkett: 7020' MD
7038.00	55.490	336.280	6765.07	67.13	-294.34	-1070.52	1697683.08	14353882.25	39°31'37.2150"N	80°47'48.8903"W	1110.25	254.627	9.92	9.31	4.17	
7074.00†	58.362	336.825	6784.71	97.20	-266.67	-1082.53	1697671.08	14353909.91	39°31'37.4888"N	80°47'49.0427"W	1114.89	256.161	8.09	7.98	1.57	Tully: 7074' MD
7087.00	59.400	337.020	6791.43	108.30	-256.43	-1086.89	1697666.72	14353920.14	39°31'37.5901"N	80°47'49.0980"W	1116.73	256.725	8.09	7.98	1.50	
7136.00	64.370	338.310	6814.51	151.42	-216.46	-1103.30	1697650.32	14353960.09	39°31'37.9854"N	80°47'49.3063"W	1124.33	258.900	10.40	10.14	2.63	
7231.00†	74.287	339.835	6848.01	240.13	-133.53	-1134.97	1697618.66	14354042.99	39°31'38.8057"N	80°47'49.7081"W	1142.80	263.290	10.55	10.44	1.60	Marcellus POE: 7231' MD
7234.00	74.600	339.880	6848.82	243.02	-130.82	-1135.96	1697617.67	14354045.70	39°31'38.8326"N	80°47'49.7207"W	1143.47	263.431	10.55	10.45	1.51	
7283.00	78.500	340.680	6860.21	290.66	-85.97	-1152.04	1697601.60	14354090.54	39°31'39.2762"N	80°47'49.9245"W	1155.24	265.732	8.12	7.96	1.63	
7332.00	81.190	341.050	6868.85	338.89	-40.40	-1167.85	1697585.80	14354136.08	39°31'39.7269"N	80°47'50.1250"W	1168.55	268.019	5.54	5.49	0.76	
7430.00	90.370	340.410	6876.05	436.52	51.75	-1200.07	1697553.59	14354228.20	39°31'40.6384"N	80°47'50.5335"W	1201.18	272.469	9.39	9.37	-0.65	
7529.00	90.000	340.650	6875.73	535.51	145.09	-1233.07	1697520.60	14354321.50	39°31'41.5617"N	80°47'50.9520"W	1241.57	276.711	0.45	-0.37	0.24	
7626.00	90.310	340.620	6875.47	632.50	236.60	-1265.23	1697488.45	14354412.98	39°31'42.4668"N	80°47'51.3598"W	1287.16	280.592	0.32	0.32	-0.03	
7722.00	89.290	339.820	6875.81	728.49	326.94	-1297.72	1697455.98	14354503.28	39°31'43.3603"N	80°47'51.7718"W	1338.27	284.140	1.35	-1.06	-0.83	



Actual Wellpath Report

Maroon Unit 1H AWP Proj: 23004'

Page 5 of 12



REFERENCE WELLPATH IDENTIFICATION

Operator	ANTERO RESOURCES CORPORATION	Well	Maroon Unit 1H
Field	Tyler	API	47-095-02756-0000
Facility	Thin Air Pad	Wellbore	Maroon Unit 1H AWB
Slot	Slot C		

WELLPATH DATA (245 stations)

MD [ft]	Inclination [°]	Azimuth [°]	TVD [ft]	Vert Sect [ft]	North [ft]	East [ft]	Grid East [US ft]	Grid North [US ft]	Latitude	Longitude	Closure Dist [ft]	Closure Dir [°]	DLS [°/100ft]	Build Rate [°/100ft]	Turn Rate [°/100ft]	Comments
7817.00	90.370	341.730	6876.09	823.48	416.63	-1329.00	1697424.71	14354592.94	39°31'44.2475"N	80°47'52.1684"W	1392.77	287.406	2.31	1.14	2.01	
7915.00	90.490	341.980	6875.35	921.47	509.76	-1359.51	1697394.21	14354686.02	39°31'45.1686"N	80°47'52.5552"W	1451.94	290.554	0.28	0.12	0.26	
8014.00	90.370	341.590	6874.61	1020.46	603.79	-1390.46	1697363.27	14354780.02	39°31'46.0986"N	80°47'52.9475"W	1515.90	293.472	0.41	-0.12	-0.39	
8111.00	90.150	341.300	6874.17	1117.46	695.75	-1421.33	1697332.42	14354871.94	39°31'47.0081"N	80°47'53.3388"W	1582.48	296.082	0.38	-0.23	-0.30	
8208.00	89.910	341.060	6874.12	1214.46	787.56	-1452.62	1697301.14	14354963.72	39°31'47.9163"N	80°47'53.7355"W	1652.38	298.465	0.35	-0.25	-0.25	
8306.00	89.970	341.450	6874.22	1312.46	880.37	-1484.11	1697269.66	14355056.49	39°31'48.8341"N	80°47'54.1348"W	1725.58	300.676	0.40	0.06	0.40	
8405.00	90.580	342.350	6873.75	1411.45	974.46	-1514.87	1697238.92	14355150.55	39°31'49.7648"N	80°47'54.5246"W	1801.22	302.752	1.10	0.62	0.91	
8502.00	90.400	341.930	6872.92	1508.43	1066.79	-1544.62	1697209.18	14355242.83	39°31'50.6779"N	80°47'54.9016"W	1877.20	304.631	0.47	-0.19	-0.43	
8600.00	90.030	341.960	6872.55	1606.42	1159.96	-1574.99	1697178.82	14355335.97	39°31'51.5995"N	80°47'55.2866"W	1956.04	306.371	0.38	-0.38	0.03	
8698.00	90.000	341.690	6872.52	1704.41	1253.07	-1605.56	1697148.26	14355429.04	39°31'52.5204"N	80°47'55.6740"W	2036.66	307.971	0.28	-0.03	-0.28	
8795.00	90.090	341.950	6872.45	1801.41	1345.23	-1635.82	1697118.01	14355521.16	39°31'53.4319"N	80°47'56.0577"W	2117.91	309.432	0.28	0.09	0.27	
8893.00	90.060	342.070	6872.32	1899.40	1438.44	-1666.09	1697087.76	14355614.33	39°31'54.3537"N	80°47'56.4413"W	2201.12	310.806	0.13	-0.03	0.12	
8989.00	89.880	342.090	6872.37	1995.38	1529.78	-1695.63	1697058.23	14355705.64	39°31'55.2572"N	80°47'56.8157"W	2283.72	312.057	0.19	-0.19	0.02	
9086.00	89.910	341.800	6872.55	2092.37	1622.00	-1725.69	1697028.18	14355797.83	39°31'56.1693"N	80°47'57.1967"W	2368.31	313.226	0.30	0.03	-0.30	
9184.00	90.520	341.780	6872.18	2190.37	1715.09	-1756.31	1696997.57	14355890.88	39°31'57.0900"N	80°47'57.5849"W	2454.83	314.320	0.62	0.62	-0.02	
9281.00	90.620	341.240	6871.21	2287.36	1807.08	-1787.07	1696966.82	14355982.83	39°31'57.9998"N	80°47'57.9749"W	2541.49	315.319	0.57	0.10	-0.56	
9380.00	90.150	341.850	6870.55	2385.35	1900.99	-1818.41	1696935.49	14356076.70	39°31'58.9286"N	80°47'58.3722"W	2630.66	316.272	0.78	-0.47	0.62	
9476.00	90.400	341.660	6870.09	2482.35	1992.16	-1848.47	1696905.45	14356167.84	39°31'59.8304"N	80°47'58.7532"W	2717.63	317.143	0.33	0.26	-0.20	
9574.00	89.750	341.030	6869.96	2580.35	2085.01	-1879.82	1696874.11	14356260.65	39°32'0.7487"N	80°47'59.1506"W	2807.31	317.963	0.92	-0.66	-0.64	
9672.00	90.150	341.200	6870.05	2678.35	2177.73	-1911.53	1696842.41	14356353.34	39°32'1.6658"N	80°47'59.5528"W	2897.67	318.725	0.44	0.41	0.17	
9769.00	89.200	340.550	6870.60	2775.34	2269.38	-1943.31	1696810.64	14356444.94	39°32'2.5723"N	80°47'59.9558"W	2987.73	319.426	1.19	-0.98	-0.67	
9866.00	89.970	341.010	6871.30	2872.34	2360.97	-1975.24	1696778.72	14356536.50	39°32'3.4782"N	80°48'0.3608"W	3078.27	320.083	0.92	0.79	0.47	
9964.00	90.030	341.250	6871.30	2970.34	2453.70	-2006.94	1696747.04	14356629.19	39°32'4.3954"N	80°48'0.7627"W	3169.93	320.719	0.25	0.06	0.24	
10062.00	90.800	341.770	6870.59	3068.33	2546.64	-2038.02	1696715.97	14356722.09	39°32'5.3146"N	80°48'1.1567"W	3261.73	321.330	0.95	0.79	0.53	
10161.00	91.350	341.310	6868.73	3167.31	2640.53	-2069.36	1696684.64	14356815.95	39°32'6.2432"N	80°48'1.5540"W	3354.79	321.914	0.72	0.56	-0.46	
10259.00	90.650	341.380	6867.02	3265.29	2733.36	-2100.70	1696653.31	14356908.75	39°32'7.1614"N	80°48'1.9514"W	3447.35	322.456	0.72	-0.71	0.07	
10355.00	91.450	341.860	6865.26	3361.27	2824.45	-2130.97	1696623.06	14356999.80	39°32'8.0623"N	80°48'2.3352"W	3538.16	322.966	0.97	0.83	0.50	
10453.00	90.680	341.700	6863.44	3459.25	2917.52	-2161.60	1696592.44	14357092.83	39°32'8.9828"N	80°48'2.7235"W	3631.04	323.465	0.80	-0.79	-0.16	
10549.00	90.220	340.500	6862.69	3555.25	3008.34	-2192.70	1696561.36	14357183.61	39°32'9.8811"N	80°48'3.1178"W	3722.64	323.913	1.34	-0.48	-1.25	
10647.00	90.340	340.230	6862.21	3653.23	3100.64	-2225.63	1696528.44	14357275.88	39°32'10.7940"N	80°48'3.5355"W	3816.72	324.329	0.30	0.12	-0.28	



Actual Wellpath Report

Maroon Unit 1H AWP Proj: 23004'

Page 6 of 12



REFERENCE WELLPATH IDENTIFICATION			
Operator	ANTERO RESOURCES CORPORATION	Well	Maroon Unit 1H
Field	Tyler	API	47-095-02756-0000
Facility	Thin Air Pad	Wellbore	Maroon Unit 1H AWB
Slot	Slot C		

WELLPATH DATA (245 stations)																
MD (ft)	Inclination (°)	Azimuth (°)	TVD (ft)	Vert Sect (ft)	North (ft)	East (ft)	Grid East (US ft)	Grid North (US ft)	Latitude	Longitude	Closure Dist (ft)	Closure Dir (°)	DLS (°/100ft)	Build Rate (°/100ft)	Turn Rate (°/100ft)	Comments
10744.00	90.400	340.990	6861.58	3750.23	3192.14	-2257.83	1696496.25	14357367.33	39°32'11.6990"N	80°48'3.9440"W	3909.93	324.728	0.79	0.06	0.78	
10842.00	90.250	340.520	6861.02	3848.22	3284.66	-2290.13	1696463.96	14357459.82	39°32'12.6142"N	80°48'4.3536"W	4004.21	325.115	0.50	-0.15	-0.48	
10941.00	90.460	340.920	6860.41	3947.22	3378.10	-2322.82	1696431.29	14357553.23	39°32'13.5384"N	80°48'4.7682"W	4099.64	325.487	0.46	0.21	0.40	
11039.00	90.770	341.760	6859.36	4045.21	3470.95	-2354.17	1696399.94	14357646.03	39°32'14.4567"N	80°48'5.1658"W	4193.99	325.853	0.91	0.32	0.86	
11135.00	90.520	341.670	6858.28	4141.20	3562.09	-2384.29	1696369.84	14357737.14	39°32'15.3582"N	80°48'5.5476"W	4286.41	326.204	0.28	-0.26	-0.09	
11232.00	90.680	341.190	6857.26	4238.19	3654.04	-2415.18	1696338.96	14357829.05	39°32'16.2676"N	80°48'5.9393"W	4380.08	326.537	0.52	0.16	-0.49	
11329.00	90.150	340.410	6856.56	4335.19	3745.64	-2447.08	1696307.08	14357920.62	39°32'17.1736"N	80°48'6.3438"W	4474.15	326.843	0.97	-0.55	-0.80	
11427.00	90.250	340.660	6856.22	4433.18	3838.04	-2479.73	1696274.43	14358012.98	39°32'18.0875"N	80°48'6.7581"W	4569.42	327.134	0.27	0.10	0.26	
11525.00	90.280	340.750	6855.76	4531.18	3930.53	-2512.12	1696242.06	14358105.44	39°32'19.0023"N	80°48'7.1688"W	4664.74	327.416	0.10	0.03	0.09	
11623.00	90.430	341.200	6855.16	4629.17	4023.17	-2544.06	1696210.13	14358198.04	39°32'19.9187"N	80°48'7.5739"W	4760.06	327.693	0.48	0.15	0.46	
11720.00	90.060	338.480	6854.74	4726.14	4114.22	-2577.49	1696176.72	14358289.05	39°32'20.8192"N	80°48'7.9980"W	4854.92	327.934	2.83	-0.38	-2.80	
11818.00	90.280	338.620	6854.45	4824.04	4205.43	-2613.33	1696140.89	14358380.23	39°32'21.7215"N	80°48'8.4529"W	4951.28	328.143	0.27	0.22	0.14	
11916.00	90.180	338.180	6854.06	4921.92	4296.55	-2649.40	1696104.83	14358471.31	39°32'22.6228"N	80°48'8.9108"W	5047.74	328.341	0.46	-0.10	-0.45	
12013.00	90.490	339.860	6853.49	5018.85	4387.12	-2684.13	1696070.12	14358561.84	39°32'23.5186"N	80°48'9.3516"W	5143.09	328.541	1.76	0.32	1.73	
12110.00	90.340	341.100	6852.79	5115.84	4478.54	-2716.54	1696037.72	14358653.22	39°32'24.4229"N	80°48'9.7627"W	5238.02	328.760	1.29	-0.15	1.28	
12209.00	90.580	341.010	6851.99	5214.83	4572.17	-2748.68	1696005.59	14358746.82	39°32'25.3490"N	80°48'10.1703"W	5334.79	328.987	0.26	0.24	-0.09	
12306.00	90.400	341.210	6851.16	5311.83	4663.94	-2780.08	1695974.20	14358838.56	39°32'26.2567"N	80°48'10.5686"W	5429.66	329.202	0.28	-0.19	0.21	
12403.00	90.580	341.090	6850.33	5408.83	4755.74	-2811.42	1695942.88	14358930.31	39°32'27.1646"N	80°48'10.9660"W	5524.59	329.410	0.22	0.19	-0.12	
12500.00	90.460	340.470	6849.45	5505.82	4847.33	-2843.35	1695910.96	14359021.87	39°32'28.0705"N	80°48'11.3710"W	5619.72	329.605	0.65	-0.12	-0.64	
12597.00	90.120	341.140	6848.96	5602.82	4938.93	-2875.24	1695879.08	14359113.44	39°32'28.9765"N	80°48'11.7755"W	5714.90	329.794	0.77	-0.35	0.69	
12696.00	91.110	341.380	6847.90	5701.81	5032.68	-2907.05	1695847.29	14359207.14	39°32'29.9037"N	80°48'12.1789"W	5811.95	329.988	1.03	1.00	0.24	
12794.00	89.350	340.950	6847.51	5799.80	5125.42	-2938.68	1695815.67	14359299.85	39°32'30.8210"N	80°48'12.5801"W	5908.12	330.172	1.85	-1.80	-0.44	
12893.00	91.750	341.310	6846.56	5898.79	5219.09	-2970.70	1695783.66	14359393.48	39°32'31.7475"N	80°48'12.9862"W	6005.33	330.352	2.45	2.42	0.36	
12991.00	89.690	338.750	6845.33	5996.75	5311.18	-3004.16	1695750.21	14359485.54	39°32'32.6583"N	80°48'13.4107"W	6101.94	330.506	3.35	-2.10	-2.61	
13089.00	90.030	341.360	6845.57	6094.73	5403.29	-3037.59	1695716.80	14359577.61	39°32'33.5694"N	80°48'13.8348"W	6198.59	330.656	2.69	0.35	2.66	
13188.00	89.780	340.750	6845.73	6193.72	5496.93	-3069.73	1695684.67	14359671.21	39°32'34.4955"N	80°48'14.2425"W	6295.99	330.819	0.67	-0.25	-0.62	
13287.00	91.420	341.190	6844.69	6292.71	5590.51	-3102.01	1695652.41	14359764.76	39°32'35.4211"N	80°48'14.6519"W	6393.45	330.975	1.72	1.66	0.44	
13385.00	90.430	340.950	6843.11	6390.70	5683.20	-3133.80	1695620.63	14359857.40	39°32'36.3379"N	80°48'15.0551"W	6489.95	331.127	1.04	-1.01	-0.24	
13482.00	90.310	340.720	6842.48	6487.70	5774.82	-3165.64	1695588.80	14359948.99	39°32'37.2441"N	80°48'15.4590"W	6585.58	331.269	0.27	-0.12	-0.24	
13581.00	90.550	340.750	6841.74	6586.69	5868.27	-3198.30	1695556.15	14360042.41	39°32'38.1684"N	80°48'15.8734"W	6683.25	331.409	0.24	0.24	0.03	



Actual Wellpath Report

Maroon Unit 1H AWP Proj: 23004'

Page 7 of 12



REFERENCE WELLPATH IDENTIFICATION			
Operator	ANTERO RESOURCES CORPORATION	Well	Maroon Unit 1H
Field	Tyler	API	47-095-02756-0000
Facility	Thin Air Pad	Wellbore	Maroon Unit 1H AWB
Slot	Slot C		

WELLPATH DATA (245 stations)																
MD [ft]	Inclination [°]	Azimuth [°]	TVD [ft]	Vert Sect [ft]	North [ft]	East [ft]	Grid East [US ft]	Grid North [US ft]	Latitude	Longitude	Closure Dist [ft]	Closure Dir [°]	DLS [°/100ft]	Build Rate [°/100ft]	Turn Rate [°/100ft]	Comments
13680.00	90.060	340.860	6841.21	6685.69	5961.77	-3230.85	1695523.62	14360135.86	39°32'39.0931"N	80°48'16.2862"W	6780.93	331.545	0.51	-0.49	0.11	
13775.00	89.970	340.350	6841.19	6780.68	6051.38	-3262.40	1695492.08	14360225.44	39°32'39.9794"N	80°48'16.6865"W	6874.77	331.670	0.55	-0.09	-0.54	
13874.00	89.820	341.220	6841.37	6879.68	6144.86	-3294.98	1695459.51	14360318.88	39°32'40.9040"N	80°48'17.0998"W	6972.53	331.799	0.89	-0.15	0.88	
13972.00	90.310	341.430	6841.26	6977.68	6237.70	-3326.36	1695428.14	14360411.69	39°32'41.8223"N	80°48'17.4978"W	7069.20	331.930	0.54	0.50	0.21	
14068.00	90.030	341.970	6840.97	7073.67	6328.84	-3356.50	1695398.01	14360502.79	39°32'42.7237"N	80°48'17.8800"W	7163.82	332.061	0.63	-0.29	0.56	
14166.00	89.350	341.870	6841.51	7171.66	6422.00	-3386.92	1695367.61	14360595.92	39°32'43.6451"N	80°48'18.2657"W	7260.39	332.193	0.70	-0.69	-0.10	
14264.00	89.350	342.190	6842.62	7269.65	6515.22	-3417.15	1695337.39	14360689.09	39°32'44.5670"N	80°48'18.6490"W	7356.97	332.324	0.33	0.00	0.33	
14385.00	89.600	341.610	6843.73	7390.63	6630.22	-3454.74	1695299.82	14360804.05	39°32'45.7044"N	80°48'19.1257"W	7476.30	332.478	0.52	0.21	-0.48	
14460.00	89.940	342.330	6844.03	7465.62	6701.54	-3477.95	1695276.61	14360875.34	39°32'46.4098"N	80°48'19.4200"W	7550.28	332.572	1.06	0.45	0.96	
14557.00	89.690	341.980	6844.34	7562.61	6793.87	-3507.68	1695246.90	14360967.64	39°32'47.3230"N	80°48'19.7969"W	7645.95	332.693	0.44	-0.26	-0.36	
14654.00	90.090	342.070	6844.53	7659.59	6886.14	-3537.61	1695216.98	14361059.87	39°32'48.2355"N	80°48'20.1765"W	7741.68	332.809	0.42	0.41	0.09	
14751.00	90.000	342.590	6844.45	7756.57	6978.56	-3567.05	1695187.55	14361152.25	39°32'49.1495"N	80°48'20.5498"W	7837.36	332.926	0.54	-0.09	0.54	
14850.00	89.970	342.450	6844.48	7855.55	7072.99	-3596.79	1695157.82	14361246.64	39°32'50.0834"N	80°48'20.9268"W	7934.99	333.046	0.14	-0.03	-0.14	
14948.00	90.250	343.570	6844.29	7953.49	7166.71	-3625.43	1695129.20	14361340.33	39°32'51.0103"N	80°48'21.2898"W	8031.53	333.167	1.18	0.29	1.14	
15044.00	90.150	342.420	6843.95	8049.44	7258.51	-3653.50	1695101.13	14361432.09	39°32'51.9182"N	80°48'21.6456"W	8126.13	333.282	1.20	-0.10	-1.20	
15140.00	90.180	343.360	6843.68	8145.40	7350.26	-3681.74	1695072.90	14361523.80	39°32'52.8256"N	80°48'22.0036"W	8220.80	333.394	0.98	0.03	0.98	
15237.00	90.090	343.050	6843.45	8242.33	7443.12	-3709.77	1695044.88	14361616.63	39°32'53.7440"N	80°48'22.3589"W	8316.40	333.508	0.33	-0.09	-0.32	
15333.00	89.970	339.580	6843.40	8338.32	7534.05	-3740.52	1695014.15	14361707.52	39°32'54.6433"N	80°48'22.7489"W	8411.50	333.596	3.62	-0.13	-3.61	
15429.00	90.370	339.730	6843.11	8434.28	7624.06	-3773.90	1694980.78	14361797.49	39°32'55.5336"N	80°48'23.1725"W	8506.97	333.665	0.44	0.42	0.16	
15527.00	90.220	339.850	6842.61	8532.26	7716.02	-3807.75	1694946.94	14361889.42	39°32'56.4432"N	80°48'23.6022"W	8604.42	333.734	0.20	-0.15	0.12	
15624.00	90.370	340.130	6842.11	8629.23	7807.17	-3840.95	1694913.76	14361980.53	39°32'57.3447"N	80°48'24.0234"W	8700.85	333.804	0.33	0.15	0.29	
15721.00	91.880	340.910	6840.20	8726.21	7898.59	-3873.29	1694881.44	14362071.92	39°32'58.2490"N	80°48'24.4337"W	8797.17	333.878	1.75	1.56	0.80	
15819.00	90.740	339.970	6837.96	8824.17	7990.91	-3906.09	1694848.65	14362164.20	39°32'59.1621"N	80°48'24.8499"W	8894.50	333.950	1.51	-1.16	-0.96	
15917.00	90.430	339.070	6836.96	8922.12	8082.71	-3940.37	1694814.38	14362255.96	39°33'0.0701"N	80°48'25.2851"W	8992.04	334.010	0.97	-0.32	-0.92	
16013.00	90.460	339.510	6836.22	9018.07	8172.51	-3974.32	1694780.44	14362345.72	39°33'0.9583"N	80°48'25.7160"W	9087.63	334.066	0.46	0.03	0.46	
16110.00	90.550	341.070	6835.36	9115.05	8263.82	-4007.03	1694747.74	14362437.00	39°33'1.8614"N	80°48'26.1311"W	9184.06	334.132	1.61	0.09	1.61	
16207.00	90.220	340.200	6834.71	9212.04	8355.32	-4039.19	1694715.59	14362528.47	39°33'2.7665"N	80°48'26.5392"W	9280.44	334.200	0.96	-0.34	-0.90	
16306.00	90.430	340.140	6834.15	9311.03	8448.45	-4072.78	1694682.02	14362621.56	39°33'3.6876"N	80°48'26.9654"W	9378.91	334.263	0.22	0.21	-0.06	
16404.00	90.460	340.300	6833.39	9409.01	8540.67	-4105.94	1694648.87	14362713.74	39°33'4.5997"N	80°48'27.3862"W	9476.38	334.324	0.17	0.03	0.16	
16501.00	90.490	340.910	6832.58	9506.00	8632.16	-4138.15	1694616.68	14362805.19	39°33'5.5046"N	80°48'27.7949"W	9572.80	334.388	0.63	0.03	0.63	



Actual Wellpath Report

Maroon Unit 1H AWP Proj: 23004'

Page 8 of 12



REFERENCE WELLPATH IDENTIFICATION			
Operator	ANTERO RESOURCES CORPORATION	Well	Maroon Unit 1H
Field	Tyler	API	47-095-02756-0000
Facility	Thin Air Pad	Wellbore	Maroon Unit 1H AWB
Slot	Slot C		

WELLPATH DATA (245 stations)																
MD (ft)	Inclination (°)	Azimuth (°)	TVD (ft)	Vert Sect (ft)	North (ft)	East (ft)	Grid East (US ft)	Grid North (US ft)	Latitude	Longitude	Closure Dist (ft)	Closure Dir (°)	DLS ("/100ft)	Build Rate ("/100ft)	Turn Rate ("/100ft)	Comments
16599.00	90.400	340.200	6831.82	9603.99	8724.57	-4170.77	1694584.07	14362897.56	39°33'6.4186"N	80°48'28.2089"W	9670.23	334.450	0.73	-0.09	-0.72	
16698.00	90.280	339.760	6831.23	9702.97	8817.58	-4204.67	1694550.19	14362990.54	39°33'7.3386"N	80°48'28.6390"W	9768.78	334.506	0.46	-0.12	-0.44	
16795.00	90.370	339.770	6830.68	9799.94	8908.59	-4238.22	1694516.65	14363081.52	39°33'8.2388"N	80°48'29.0648"W	9865.37	334.557	0.09	0.09	0.01	
16893.00	90.370	341.070	6830.05	9897.93	9000.92	-4271.06	1694483.82	14363173.81	39°33'9.1520"N	80°48'29.4816"W	9962.86	334.615	1.33	0.00	1.33	
16990.00	90.280	340.670	6829.50	9994.92	9092.57	-4302.84	1694452.05	14363265.42	39°33'10.0584"N	80°48'29.8849"W	10059.28	334.675	0.42	-0.09	-0.41	
17088.00	90.490	340.900	6828.84	10092.92	9185.10	-4335.10	1694419.81	14363357.92	39°33'10.9737"N	80°48'30.2941"W	10156.73	334.734	0.32	0.21	0.23	
17185.00	90.280	340.840	6828.19	10189.92	9276.74	-4366.88	1694388.03	14363449.52	39°33'11.8800"N	80°48'30.6975"W	10253.18	334.792	0.23	-0.22	-0.06	
17379.00	90.370	341.320	6827.09	10383.91	9460.26	-4429.79	1694325.16	14363632.96	39°33'13.6951"N	80°48'31.4955"W	10446.03	334.909	0.25	0.05	0.25	
17476.00	90.370	340.740	6826.46	10480.91	9551.99	-4461.32	1694293.64	14363724.66	39°33'14.6023"N	80°48'31.8956"W	10542.48	334.965	0.60	0.00	-0.60	
17574.00	90.400	341.150	6825.81	10578.91	9644.62	-4493.31	1694261.66	14363817.25	39°33'15.5185"N	80°48'32.3015"W	10639.95	335.020	0.42	0.03	0.42	
17671.00	90.340	340.900	6825.18	10675.90	9736.34	-4524.85	1694230.13	14363908.94	39°33'16.4257"N	80°48'32.7017"W	10736.42	335.074	0.27	-0.06	-0.26	
17769.00	90.400	341.310	6824.55	10773.90	9829.06	-4556.59	1694198.41	14364001.62	39°33'17.3427"N	80°48'33.1043"W	10833.88	335.128	0.42	0.06	0.42	
17866.00	90.310	341.230	6823.95	10870.90	9920.92	-4587.73	1694167.27	14364093.44	39°33'18.2513"N	80°48'33.4995"W	10930.32	335.183	0.12	-0.09	-0.08	
17963.00	90.150	341.250	6823.56	10967.90	10012.77	-4618.93	1694136.09	14364185.25	39°33'19.1596"N	80°48'33.8953"W	11026.79	335.236	0.17	-0.16	0.02	
18062.00	90.120	340.830	6823.32	11066.90	10106.40	-4651.09	1694103.94	14364278.84	39°33'20.0857"N	80°48'34.3034"W	11125.28	335.288	0.43	-0.03	-0.42	
18158.00	90.400	341.180	6822.89	11162.90	10197.17	-4682.34	1694072.70	14364369.58	39°33'20.9834"N	80°48'34.6999"W	11220.81	335.336	0.47	0.29	0.36	
18255.00	90.250	341.020	6822.34	11259.90	10288.94	-4713.76	1694041.30	14364461.31	39°33'21.8911"N	80°48'35.0985"W	11317.32	335.386	0.23	-0.15	-0.16	
18352.00	90.460	341.430	6821.74	11356.89	10380.77	-4744.98	1694010.09	14364553.11	39°33'22.7994"N	80°48'35.4946"W	11413.82	335.435	0.47	0.22	0.42	
18449.00	90.280	341.480	6821.11	11453.89	10472.74	-4775.83	1693979.25	14364645.04	39°33'23.7089"N	80°48'35.8860"W	11510.29	335.486	0.19	-0.19	0.05	
18546.00	90.520	341.220	6820.42	11552.89	10566.53	-4807.49	1693947.61	14364738.80	39°33'24.6366"N	80°48'36.2876"W	11608.77	335.536	0.36	0.24	-0.26	
18645.00	90.310	341.410	6819.72	11649.88	10658.42	-4838.56	1693916.54	14364830.65	39°33'25.5454"N	80°48'36.6819"W	11705.28	335.584	0.29	-0.22	0.20	
18743.00	90.370	341.610	6819.13	11747.88	10751.36	-4869.64	1693885.48	14364923.55	39°33'26.4645"N	80°48'37.0762"W	11802.76	335.633	0.21	0.06	0.20	
18841.00	90.520	341.210	6818.37	11845.88	10844.24	-4900.88	1693854.25	14365016.40	39°33'27.3832"N	80°48'37.4726"W	11900.26	335.680	0.44	0.15	-0.41	
18936.00	90.340	341.580	6817.66	11940.87	10934.28	-4931.19	1693823.95	14365106.39	39°33'28.2736"N	80°48'37.8571"W	11994.79	335.725	0.43	-0.19	0.39	
19035.00	90.220	341.420	6817.18	12039.87	11028.16	-4962.60	1693792.55	14365200.24	39°33'29.2022"N	80°48'38.2556"W	12093.29	335.773	0.20	-0.12	-0.16	
19133.00	90.090	341.000	6816.91	12137.87	11120.93	-4994.17	1693761.00	14365292.98	39°33'30.1197"N	80°48'38.6561"W	12190.85	335.816	0.45	-0.13	-0.43	
19232.00	90.250	340.960	6816.62	12236.87	11214.53	-5026.43	1693728.75	14365386.53	39°33'31.0454"N	80°48'39.0656"W	12289.45	335.858	0.17	0.16	-0.04	
19330.00	90.370	341.330	6816.09	12334.87	11307.27	-5058.10	1693697.09	14365479.24	39°33'31.9627"N	80°48'39.4674"W	12387.04	335.900	0.40	0.12	0.38	
19428.00	90.280	341.420	6815.53	12432.86	11400.13	-5089.40	1693665.81	14365572.07	39°33'32.8811"N	80°48'39.8645"W	12484.59	335.942	0.13	-0.09	0.09	
19526.00	90.310	341.160	6815.03	12530.86	11492.95	-5120.84	1693634.38	14365664.85	39°33'33.7991"N	80°48'40.2634"W	12582.17	335.984	0.27	0.03	-0.27	



Actual Wellpath Report

Maroon Unit 1H AWP Proj: 23004'

Page 9 of 12



REFERENCE WELLPATH IDENTIFICATION			
Operator	ANTERO RESOURCES CORPORATION	Well	Maroon Unit 1H
Field	Tyler	API	47-095-02756-0000
Facility	Thin Air Pad	Wellbore	Maroon Unit 1H AWB
Slot	Slot C		

WELLPATH DATA (245 stations)																
MD (ft)	Inclination (°)	Azimuth (°)	TVD (ft)	Vert Sect (ft)	North (ft)	East (ft)	Grid East (US ft)	Grid North (US ft)	Latitude	Longitude	Closure Dist (ft)	Closure Dir (°)	DLS (°/100ft)	Build Rate (°/100ft)	Turn Rate (°/100ft)	Comments
19624.00	90.220	341.120	6814.57	12628.86	11585.69	-5152.51	1693602.72	14365757.55	39°33'34.7163"N	80°48'40.6654"W	12679.77	336.024	0.10	-0.09	-0.04	
19721.00	90.340	341.190	6814.10	12725.86	11677.49	-5183.85	1693571.40	14365849.31	39°33'35.6243"N	80°48'41.0629"W	12776.39	336.063	0.14	0.12	0.07	
19820.00	90.400	341.010	6813.46	12824.86	11771.15	-5215.91	1693539.34	14365942.94	39°33'36.5506"N	80°48'41.4699"W	12875.01	336.101	0.19	0.06	-0.18	
19916.00	90.430	340.960	6812.77	12920.86	11861.91	-5247.19	1693508.08	14366033.66	39°33'37.4482"N	80°48'41.8668"W	12970.66	336.137	0.06	0.03	-0.05	
20013.00	90.680	340.900	6811.83	13017.85	11953.58	-5278.88	1693476.40	14366125.29	39°33'38.3549"N	80°48'42.2689"W	13067.32	336.173	0.27	0.26	-0.06	
20110.00	91.320	341.000	6810.13	13114.83	12045.26	-5310.54	1693444.76	14366216.93	39°33'39.2616"N	80°48'42.6707"W	13163.97	336.208	0.67	0.66	0.10	
20208.00	90.770	340.580	6808.35	13212.81	12137.78	-5342.78	1693412.53	14366309.42	39°33'40.1767"N	80°48'43.0798"W	13261.64	336.242	0.71	-0.56	-0.43	
20305.00	91.080	340.880	6806.78	13309.80	12229.34	-5374.78	1693380.54	14366400.94	39°33'41.0822"N	80°48'43.4861"W	13358.33	336.275	0.44	0.32	0.31	
20403.00	90.830	340.850	6805.15	13407.78	12321.91	-5406.90	1693348.43	14366493.47	39°33'41.9978"N	80°48'43.8937"W	13456.00	336.308	0.26	-0.26	-0.03	
20501.00	90.920	341.150	6803.65	13505.77	12414.56	-5438.81	1693316.54	14366586.09	39°33'42.9142"N	80°48'44.2985"W	13553.67	336.342	0.32	0.09	0.31	
20599.00	90.770	340.830	6802.20	13603.76	12507.20	-5470.72	1693284.63	14366678.70	39°33'43.8305"N	80°48'44.7036"W	13651.34	336.375	0.36	-0.15	-0.33	
20698.00	90.340	341.170	6801.25	13702.76	12600.81	-5502.95	1693252.42	14366772.26	39°33'44.7562"N	80°48'45.1126"W	13750.01	336.408	0.55	-0.43	0.34	
20895.00	90.400	340.980	6799.97	13899.75	12787.15	-5566.84	1693188.55	14366958.53	39°33'46.5992"N	80°48'45.9235"W	13946.36	336.474	0.10	0.03	-0.10	
20992.00	90.710	341.290	6799.03	13996.75	12878.94	-5598.21	1693157.20	14367050.28	39°33'47.5070"N	80°48'46.3215"W	14043.04	336.506	0.45	0.32	0.32	
21090.00	90.060	340.670	6798.38	14094.74	12971.58	-5630.14	1693125.28	14367142.89	39°33'48.4233"N	80°48'46.7268"W	14140.74	336.537	0.92	-0.66	-0.63	
21188.00	89.690	341.040	6798.59	14192.74	13064.16	-5662.28	1693093.15	14367235.43	39°33'49.3390"N	80°48'47.1347"W	14238.46	336.567	0.53	-0.38	0.38	
21285.00	89.230	341.160	6799.50	14289.74	13155.93	-5693.70	1693061.74	14367327.16	39°33'50.2465"N	80°48'47.5334"W	14335.16	336.598	0.49	-0.47	0.12	
21384.00	89.660	341.720	6800.46	14388.73	13249.78	-5725.21	1693030.25	14367420.97	39°33'51.1747"N	80°48'47.9333"W	14433.80	336.631	0.71	0.43	0.57	
21480.00	89.420	342.290	6801.23	14484.72	13341.08	-5754.87	1693000.60	14367512.24	39°33'52.0776"N	80°48'48.3095"W	14529.38	336.666	0.64	-0.25	0.59	
21579.00	89.450	341.130	6802.21	14583.70	13435.07	-5785.94	1692969.55	14367606.19	39°33'53.0072"N	80°48'48.7037"W	14627.99	336.700	1.17	0.03	-1.17	
21675.00	89.450	341.290	6803.13	14679.70	13525.95	-5816.86	1692938.64	14367697.03	39°33'53.9061"N	80°48'49.0961"W	14723.69	336.730	0.17	0.00	0.17	
21772.00	89.140	341.230	6804.32	14776.69	13617.80	-5848.02	1692907.49	14367788.85	39°33'54.8145"N	80°48'49.4916"W	14820.38	336.759	0.33	-0.32	-0.06	
21869.00	89.080	341.160	6805.83	14873.68	13709.61	-5879.28	1692876.24	14367880.62	39°33'55.7225"N	80°48'49.8884"W	14917.08	336.788	0.10	-0.06	-0.07	
21966.00	89.110	341.250	6807.36	14970.67	13801.43	-5910.53	1692845.00	14367972.40	39°33'56.6306"N	80°48'50.2849"W	15013.78	336.817	0.10	0.03	0.09	
22063.00	89.200	341.070	6808.79	15067.66	13893.22	-5941.85	1692813.70	14368064.16	39°33'57.5384"N	80°48'50.6824"W	15110.50	336.845	0.21	0.09	-0.19	
22162.00	88.950	340.650	6810.39	15166.64	13986.73	-5974.31	1692781.25	14368157.64	39°33'58.4633"N	80°48'51.0944"W	15209.24	336.871	0.49	-0.25	-0.42	
22260.00	89.170	341.280	6812.00	15264.63	14079.36	-6006.26	1692749.31	14368250.23	39°33'59.3794"N	80°48'51.5000"W	15306.98	336.897	0.68	0.22	0.64	
22357.00	89.750	340.700	6812.91	15361.62	14171.07	-6037.86	1692717.73	14368341.90	39°34'0.2864"N	80°48'51.9010"W	15403.73	336.923	0.85	0.60	-0.60	
22456.00	90.120	340.880	6813.03	15460.62	14264.56	-6070.43	1692685.17	14368435.35	39°34'1.2111"N	80°48'52.3145"W	15502.51	336.947	0.42	0.37	0.18	
22554.00	90.090	341.380	6812.85	15558.62	14357.29	-6102.13	1692653.48	14368528.04	39°34'2.1282"N	80°48'52.7168"W	15600.25	336.974	0.51	-0.03	0.51	



Actual Wellpath Report

Maroon Unit 1H AWP Proj: 23004'

Page 10 of 12



REFERENCE WELLPATH IDENTIFICATION

Operator	ANTERO RESOURCES CORPORATION	Well	Maroon Unit 1H
Field	Tyler	API	47-095-02756-0000
Facility	Thin Air Pad	Wellbore	Maroon Unit 1H AWB
Slot	Slot C		

WELLPATH DATA (245 stations) † = interpolated, ‡ = extrapolated station

MD [ft]	Inclination [°]	Azimuth [°]	TVD [ft]	Vert Sect [ft]	North [ft]	East [ft]	Grid East [US ft]	Grid North [US ft]	Latitude	Longitude	Closure Dist [ft]	Closure Dir [°]	DLS [°/100ft]	Build Rate [°/100ft]	Turn Rate [°/100ft]	Comments
22652.00	90.490	341.830	6812.35	15656.62	14450.28	-6133.05	1692622.57	14368621.00	39°34'3.0479"N	80°48'53.1092"W	15697.93	337.002	0.61	0.41	0.46	
22750.00	90.400	341.290	6811.59	15754.61	14543.24	-6164.05	1692591.58	14368713.92	39°34'3.9673"N	80°48'53.5026"W	15795.61	337.031	0.56	-0.09	-0.55	
22847.00	90.830	341.300	6810.55	15851.60	14635.11	-6195.15	1692560.49	14368805.76	39°34'4.8759"N	80°48'53.8973"W	15892.34	337.057	0.44	0.44	0.01	
22946.00	90.310	341.090	6809.56	15950.60	14728.83	-6227.07	1692528.59	14368899.43	39°34'5.8027"N	80°48'54.3024"W	15991.08	337.082	0.57	-0.53	-0.21	
23004.00‡	90.310	341.090	6809.25	16008.60	14783.69	-6245.86	1692509.80	14368954.28	39°34'6.3454"N	80°48'54.5409"W	16048.94	337.097	0.00	0.00	0.00	Projected MD at TD: 23004'

HOLE & CASING SECTIONS - Ref Wellbore: Maroon Unit 1H AWB Ref Wellpath: Maroon Unit 1H AWP Proj: 23004'

String/Diameter	Start MD [ft]	End MD [ft]	Interval [ft]	Start TVD [ft]	End TVD [ft]	Start N/S [ft]	Start E/W [ft]	End N/S [ft]	End E/W [ft]
20in Conductor	25.50	126.00	100.50	25.50	126.00	0.00	0.00	-0.02	0.09
17.5in Open Hole	126.00	479.00	353.00	126.00	479.00	-0.02	0.09	0.14	1.02
13.375in Casing Surface	25.50	459.00	433.50	25.50	459.00	0.00	0.00	0.15	0.96
12.25in Open Hole	479.00	2612.00	2133.00	479.00	2611.80	0.14	1.02	-18.43	20.77
9.625in Casing Intermediate	25.50	2592.00	2566.50	25.50	2591.80	0.00	0.00	-18.23	20.52
8.75in Open Hole	2612.00	5603.00	2991.00	2611.80	5490.70	-18.43	20.77	-433.58	-632.67
8.5in Open Hole	5603.00	23004.00	17401.00	5490.70	6809.25	-433.58	-632.67	14783.69	-6245.86
5.5in Casing Production	25.50	22984.00	22958.50	25.50	6809.36	0.00	0.00	14764.77	-6239.38



Actual Wellpath Report

Maroon Unit 1H AWP Proj: 23004'
Page 11 of 12



REFERENCE WELLPATH IDENTIFICATION			
Operator	ANTERO RESOURCES CORPORATION	Well	Maroon Unit 1H
Field	Tyler	API	47-095-02756-0000
Facility	Thin Air Pad	Wellbore	Maroon Unit 1H AWB
Slot	Slot C		

TARGETS								
Name	TVD [ft]	North [ft]	East [ft]	Grid East [US ft]	Grid North [US ft]	Latitude	Longitude	Shape
Maroon Unit 1H POE Rev-4	6854.00	-105.34	-1157.85	1697595.79	14354071.17	39°31'39.0849"N	80°47'49.9993"W	point
Maroon Unit 1H BHL Rev-4	6880.00	15555.58	-6501.82	1692253.95	14369725.86	39°34'13.9793"N	80°48'57.7892"W	point
Maroon Unit 1H LP Rev-4	6880.00	75.64	-1219.61	1697534.06	14354252.07	39°31'40.8749"N	80°47'50.7822"W	point
Maroon Unit 1H 50' L/R Hard Line	7000.00	7725.12	-3829.84	1694924.87	14361898.52	39°32'56.5336"N	80°48'23.8838"W	rectangle
2D Rectangle 16547.6 x 100.								

WELLPATH COMPOSITION - Ref Wellbore: Maroon Unit 1H AWB Ref Wellpath: Maroon Unit 1H AWP Proj: 23004'						
Start MD [ft]	End MD [ft]	Positional Uncertainty Model	Log Name/Comment	Wellbore	Survey Date	
25.50	400.00	Gyrodata 2015 - GC+WIR+DPIPE	01 Gyrodata MS Gyro <17-1/2"> (100'-400')	Maroon Unit 1H AWB	13/Dec/2021	
400.00	738.00	Gyrodata 2015 - GC+WIR+DPIPE	02 Gyrodata MS Gyro <12-1/4"> (400')(500'-738')	Maroon Unit 1H AWB	14/Dec/2021	
738.00	2535.00	BH NaviTrak (2019) (Axial Corr+HRGM)	03 APS EM <12-1/4"> (738')(771'-2535')	Maroon Unit 1H AWB	13/Dec/2021	
2535.00	5239.00	BH NaviTrak (2019) (Axial Corr+HRGM)	04 APS EM <8-3/4"> (2535')(2609'-5239')	Maroon Unit 1H AWB	12/Jan/2022	
5239.00	23004.00	BH AutoTrak Curve/eXpress (2019) (HRGM, Short spacing)	05 BH AT Curve <8-1/2"> (5239')(5384'-22946')	Maroon Unit 1H AWB	12/Jan/2022	



Actual Wellpath Report

Maroon Unit 1H AWP Proj: 23004'

Page 12 of 12



REFERENCE WELLPATH IDENTIFICATION			
Operator	ANTERO RESOURCES CORPORATION	Well	Maroon Unit 1H
Field	Tyler	API	47-095-02756-0000
Facility	Thin Air Pad	Wellbore	Maroon Unit 1H AWB
Slot	Slot C		

COMMENTS
<p>Wellpath general comments API: 47-095-02756-0000 BH Job #: 111128347 Rig: H&P 317 Duration: 1/15/2022-1/22/2022 Gyrodata MS Gyro <17-1/2"> (100'-400') Gyrodata MS Gyro <12-1/4"> (400')(500'-738') APS EM <12-1/4"> (738')(771'-2535') APS EM <8-3/4"> (2535')(2609'-5239') BH AT Curve <8-1/2"> (5239')(5384'-22946') Sycamore: 6730' MD Middlesex: 6873' MD Burkett: 7020' MD Tully: 7074' MD Marcellus POE: 7231' MD Projected MD at TD: 23004'</p>