



ANTERO RESOURCES CORPORATION



Location: Tyler County, WV
 Field: Tyler
 Facility: Nalley Pad

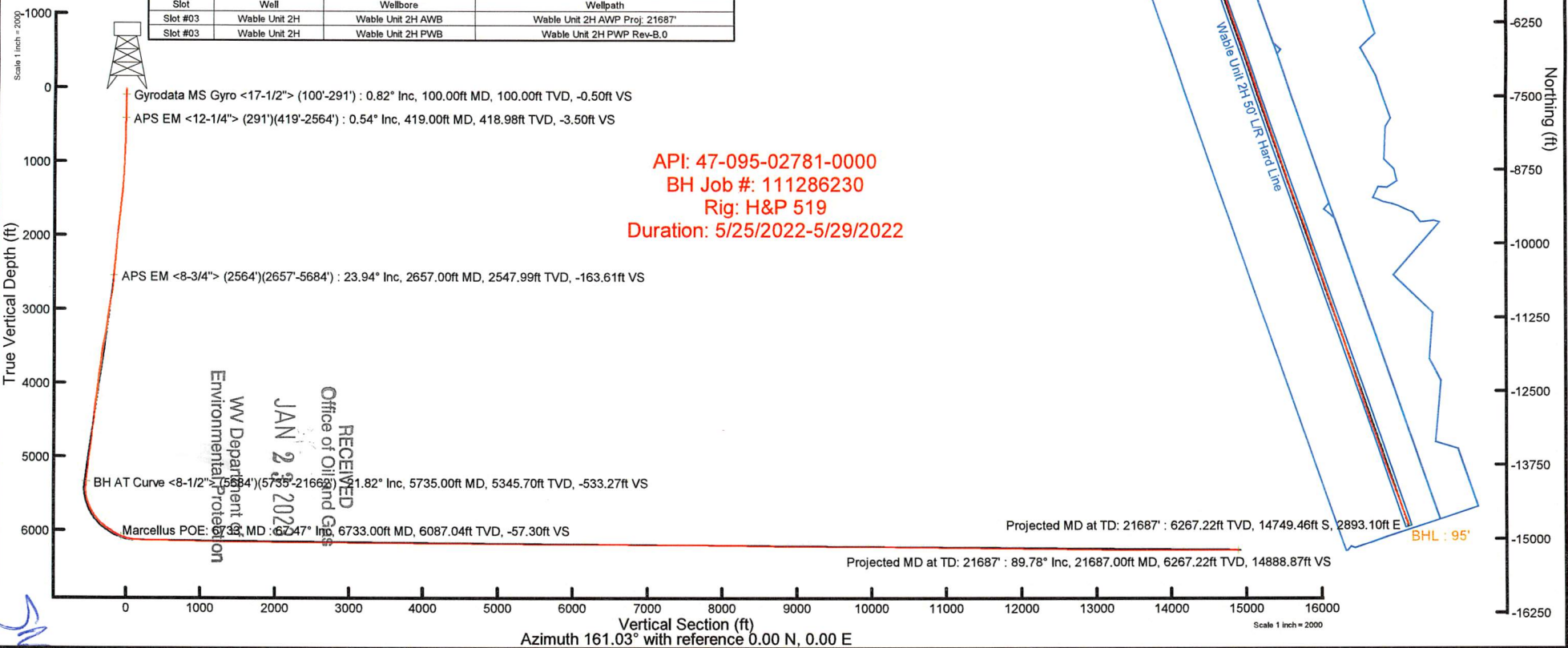
Slot: Slot #03
 Well: Wable Unit 2H
 Wellbore: Wable Unit 2H PWB

Plot reference wellpath is Wable Unit 2H PWP Rev-B.0	Grid System: NAD27 / UTM Zone 17 North, US feet
True vertical depths are referenced to H&P 519 (RKB)	North Reference: Grid north
Reference wellpath measured depths are referenced to H&P 519 (RKB)	Scale: True distance
H&P 519 (RKB) to Mean Sea Level: 1002 feet	Coordinates are in feet referenced to Slot
Mean Sea Level to Ground level (At Slot Slot #03): -972 feet	Depths are in feet
Offset wellpath MDs are referenced to each path's default MD datum	Created by: edcarson on 2022-06-14; Database: WA_MPL_EASTERNUS_Defn

Location Information				
Facility Name	Grid East (US ft)	Grid North (US ft)	Latitude	Longitude
Nalley Pad	1653163.370	14360203.730	39°32'40.3242"N	80°57'17.2242"W
Slot	Local N (ft)	Local E (ft)	Grid East (US ft)	Grid North (US ft)
Slot #03	-26.68	-15.88	1653147.500	14360177.060
Comment: Wable Unit 2H				
H&P 519 (RKB) to Ground level (At Slot Slot #03)				30ft
Mean Sea Level to Ground level (At Slot Slot #03)				-972ft
H&P 519 (RKB) to Mean Sea Level				1002ft

Well Profile Data								
Design Comment	MD (ft)	Inc (°)	Az (°)	TVD (ft)	Local N (ft)	Local E (ft)	DLS (*/100ft)	VS (ft)
Tie On	2564.00	24.040	264.210	2463.02	-27.57	-560.57	0.00	-156.15
Proj. to Bottom	2641.00	24.040	264.210	2533.34	-30.74	-591.78	0.00	-163.30
Drill Out	2721.00	24.040	264.210	2606.40	-34.02	-624.20	0.00	-170.73
End of 3D Arc	2827.35	25.109	268.634	2703.13	-36.75	-668.31	2.00	-182.50
Curve KOP	5751.19	25.109	268.634	5350.67	-66.32	-1908.65	0.00	-557.73
POE	6732.51	69.347	161.027	6087.00	-590.10	-1978.88	8.00	-85.23
Landing Pt.	6984.42	89.500	161.027	6133.00	-823.07	-1898.78	8.00	161.13
BHL	21740.00	89.500	161.027	6261.77	-14776.51	2898.31	0.00	14916.14

Well Data			
Slot	Well	Wellbore	Wellpath
Slot #03	Wable Unit 2H	Wable Unit 2H AWP	Wable Unit 2H AWP Proj. 21687
Slot #03	Wable Unit 2H	Wable Unit 2H PWB	Wable Unit 2H PWP Rev-B.0





Actual Wellpath Report

Wable Unit 2H AWP Proj: 21687'

Page 1 of 12



REFERENCE WELLPATH IDENTIFICATION			
Operator	ANTERO RESOURCES CORPORATION	Well	Wable Unit 2H
Field	Tyler	API	47-095-02781-0000
Facility	Nalley Pad	Wellbore	Wable Unit 2H AWB
Slot	Slot #03		

REPORT SETUP INFORMATION			
Projection System	NAD27 / UTM Zone 17 North, US feet	Software System	WellArchitect® 6.0
North Reference	Grid	User	Edsaryar
Scale	0.999600	Report Generated	6/14/2022 at 11:57:31 AM
Convergence at slot	0.03° East	Database	WA_MPL_EASTERNUS_Defn

WELLPATH LOCATION						
	Local coordinates		Grid coordinates		Geographic coordinates	
	North[ft]	East[ft]	Easting[US ft]	Northing[US ft]	Latitude	Longitude
Slot Location	-26.68	-15.88	1653147.50	14360177.06	39°32'40.0606"N	80°57'17.4270"W
Facility Reference Pt			1653163.37	14360203.73	39°32'40.3242"N	80°57'17.2242"W
Field Reference Pt			0.00	0.00	0°00'0.0000"	85°29'19.3013"W

WELLPATH DATUM			
Calculation method	Minimum curvature	H&P 519 (RKB) to Facility Vertical Datum	1002.00ft
Horizontal Reference Pt	Slot	H&P 519 (RKB) to Mean Sea Level	1002.00ft
Vertical Reference Pt	H&P 519 (RKB)	H&P 519 (RKB) to Ground Level at Slot (Slot #03)	30.00ft
MD Reference Pt	H&P 519 (RKB)	Section Origin	N 0.00, E 0.00 ft
Field Vertical Reference	Mean Sea Level	Section Azimuth	161.03°

RECEIVED
Office of Oil and Gas
JAN 23 2023
WV Department of
Environmental Protection



Actual Wellpath Report

Wable Unit 2H AWP Proj: 21687'
Page 2 of 12



REFERENCE WELLPATH IDENTIFICATION			
Operator	ANTERO RESOURCES CORPORATION	Well	Wable Unit 2H
Field	Tyler	API	47-095-02781-0000
Facility	Nalley Pad	Wellbore	Wable Unit 2H AWB
Slot	Slot #03		

WELLPATH DATA (237 stations) † = interpolated, ‡ = extrapolated station																
MD [ft]	Inclination [°]	Azimuth [°]	TVD [ft]	Vert Sect [ft]	North [ft]	East [ft]	Grid East [US ft]	Grid North [US ft]	Latitude	Longitude	Closure Dist [ft]	Closure Dir [°]	DLS [°/100ft]	Build Rate [°/100ft]	Turn Rate [°/100ft]	Comments
0.00†	0.000	336.350	0.00	0.00	0.00	0.00	1653147.50	14360177.06	39°32'40.0606"N	80°57'17.4270"W	0.00	0.000	0.00	0.00	0.00	
30.00	0.000	336.350	30.00	0.00	0.00	0.00	1653147.50	14360177.06	39°32'40.0606"N	80°57'17.4270"W	0.00	0.000	0.00	0.00	0.00	
100.00	0.820	336.350	100.00	-0.50	0.46	-0.20	1653147.30	14360177.52	39°32'40.0651"N	80°57'17.4296"W	0.50	336.350	1.17	1.17	0.00	Gyrodata MS Gyro <17-1/2"> (100'-291')
200.00	0.660	333.630	199.99	-1.78	1.63	-0.74	1653146.76	14360178.69	39°32'40.0767"N	80°57'17.4365"W	1.79	335.476	0.16	-0.16	-2.72	
291.00	0.360	342.420	290.99	-2.59	2.37	-1.06	1653146.44	14360179.43	39°32'40.0841"N	80°57'17.4406"W	2.60	335.866	0.34	-0.33	9.66	
419.00	0.540	309.330	418.98	-3.50	3.14	-1.65	1653145.85	14360180.20	39°32'40.0916"N	80°57'17.4481"W	3.55	332.251	0.24	0.14	-25.85	APS EM <12-1/4"> (291')(419'-2564')
510.00	0.640	307.390	509.98	-4.29	3.72	-2.39	1653145.11	14360180.78	39°32'40.0974"N	80°57'17.4575"W	4.42	327.308	0.11	0.11	-2.13	
600.00	1.600	292.190	599.96	-5.54	4.50	-3.95	1653143.55	14360181.56	39°32'40.1051"N	80°57'17.4774"W	5.99	318.718	1.11	1.07	-16.89	
689.00	2.720	288.890	688.89	-7.65	5.65	-7.10	1653140.40	14360182.71	39°32'40.1165"N	80°57'17.5176"W	9.07	308.526	1.27	1.26	-3.71	
779.00	4.470	285.220	778.71	-10.93	7.26	-12.50	1653135.00	14360184.32	39°32'40.1325"N	80°57'17.5866"W	14.46	300.154	1.96	1.94	-4.08	
869.00	5.460	278.370	868.38	-14.87	8.81	-20.12	1653127.38	14360185.86	39°32'40.1478"N	80°57'17.6838"W	21.97	293.638	1.28	1.10	-7.61	
961.00	7.090	275.110	959.82	-19.20	9.95	-30.11	1653117.40	14360187.01	39°32'40.1591"N	80°57'17.8113"W	31.71	288.287	1.81	1.77	-3.54	
1051.00	8.680	268.330	1048.97	-23.48	10.25	-42.43	1653105.09	14360187.30	39°32'40.1621"N	80°57'17.9686"W	43.65	283.577	2.04	1.77	-7.53	
1146.00	10.770	266.770	1142.60	-28.02	9.54	-58.46	1653089.06	14360186.59	39°32'40.1552"N	80°57'18.1732"W	59.23	279.266	2.22	2.20	-1.64	
1241.00	12.350	267.850	1235.67	-33.37	8.66	-77.48	1653070.05	14360185.71	39°32'40.1465"N	80°57'18.4160"W	77.96	276.375	1.68	1.66	1.14	
1335.00	13.950	268.590	1327.20	-39.70	8.00	-98.85	1653048.69	14360185.06	39°32'40.1402"N	80°57'18.6888"W	99.17	274.627	1.71	1.70	0.79	
1429.00	15.950	271.520	1418.02	-47.64	8.06	-123.09	1653024.46	14360185.12	39°32'40.1409"N	80°57'18.9982"W	123.35	273.749	2.27	2.13	3.12	
1524.00	17.310	272.380	1509.04	-57.36	9.00	-150.26	1652997.30	14360186.05	39°32'40.1503"N	80°57'19.3450"W	150.53	273.427	1.45	1.43	0.91	
1619.00	19.250	269.440	1599.24	-67.45	9.43	-180.05	1652967.53	14360186.49	39°32'40.1547"N	80°57'19.7252"W	180.29	272.999	2.26	2.04	-3.09	
1713.00	21.720	266.540	1687.30	-76.99	8.23	-212.91	1652934.68	14360185.29	39°32'40.1430"N	80°57'20.1447"W	213.07	272.214	2.84	2.63	-3.09	
1808.00	23.870	265.370	1774.87	-86.46	5.62	-249.62	1652897.98	14360182.68	39°32'40.1174"N	80°57'20.6133"W	249.68	271.289	2.31	2.26	-1.23	
1902.00	25.280	264.960	1860.35	-96.00	2.32	-288.57	1652859.05	14360179.38	39°32'40.0849"N	80°57'21.1106"W	288.58	270.460	1.51	1.50	-0.44	
1997.00	25.790	264.210	1946.08	-105.59	-1.55	-329.34	1652818.30	14360175.51	39°32'40.0469"N	80°57'21.6310"W	329.34	269.731	0.64	0.54	-0.79	
2092.00	26.100	263.290	2031.50	-114.74	-6.07	-370.65	1652777.00	14360170.99	39°32'40.0024"N	80°57'22.1584"W	370.70	269.061	0.53	0.33	-0.97	
2186.00	24.220	263.070	2116.58	-123.16	-10.82	-410.33	1652737.33	14360166.25	39°32'39.9557"N	80°57'22.6649"W	410.47	268.490	2.00	-2.00	-0.23	
2281.00	22.480	262.700	2203.80	-130.90	-15.48	-447.69	1652699.99	14360161.59	39°32'39.9098"N	80°57'23.1419"W	447.96	268.020	1.84	-1.83	-0.39	
2375.00	23.650	263.960	2290.28	-138.75	-19.74	-484.27	1652663.43	14360157.32	39°32'39.8678"N	80°57'23.6088"W	484.67	267.665	1.35	1.24	1.34	
2470.00	24.040	264.200	2377.17	-147.42	-23.70	-522.47	1652625.24	14360153.36	39°32'39.8289"N	80°57'24.0964"W	523.01	267.402	0.42	0.41	0.25	
2564.00	24.040	264.210	2463.02	-156.15	-27.57	-560.57	1652587.16	14360149.50	39°32'39.7908"N	80°57'24.5828"W	561.24	267.184	0.00	0.00	0.01	
2657.00	23.940	260.600	2547.99	-163.61	-32.56	-598.03	1652549.71	14360144.51	39°32'39.7417"N	80°57'25.0610"W	598.92	266.883	1.58	-0.11	-3.88	APS EM <8-3/4"> (2564')(2657'-5684')

RECEIVED
 Office of Oil and Gas
 JAN 23 2023
 WV Department of
 Environmental Protection



Actual Wellpath Report

Wable Unit 2H AWP Proj: 21687'

Page 3 of 12



REFERENCE WELLPATH IDENTIFICATION			
Operator	ANTERO RESOURCES CORPORATION	Well	Wable Unit 2H
Field	Tyler	API	47-095-02781-0000
Facility	Nalley Pad	Wellbore	Wable Unit 2H AWB
Slot	Slot #03		

WELLPATH DATA (237 stations)																
MD [ft]	Inclination [°]	Azimuth [°]	TVD [ft]	Vert Sect [ft]	North [ft]	East [ft]	Grid East [US ft]	Grid North [US ft]	Latitude	Longitude	Closure Dist [ft]	Closure Dir [°]	DLS [°/100ft]	Build Rate [°/100ft]	Turn Rate [°/100ft]	Comments
2751.00	25.900	260.500	2633.23	-170.16	-39.07	-637.10	1652510.66	14360138.01	39°32'39.6776"N	80°57'25.5598"W	638.30	266.491	2.09	2.09	-0.11	
2846.00	27.630	263.700	2718.06	-178.40	-44.91	-679.46	1652468.31	14360132.17	39°32'39.6200"N	80°57'26.1006"W	680.95	266.218	2.37	1.82	3.37	
2940.00	28.520	270.360	2801.01	-190.62	-47.16	-723.58	1652424.21	14360129.92	39°32'39.5980"N	80°57'26.6637"W	725.12	266.271	3.46	0.95	7.09	
3035.00	28.520	273.080	2884.49	-206.64	-45.80	-768.91	1652378.90	14360131.28	39°32'39.6116"N	80°57'27.2423"W	770.27	266.591	1.37	0.00	2.86	
3132.00	28.120	270.200	2969.88	-222.84	-44.48	-814.89	1652332.93	14360132.60	39°32'39.6249"N	80°57'27.8293"W	816.11	266.876	1.47	-0.41	-2.97	
3226.00	27.660	267.080	3052.97	-236.15	-45.51	-858.84	1652289.01	14360131.57	39°32'39.6149"N	80°57'28.3903"W	860.04	266.967	1.63	-0.49	-3.32	
3321.00	27.010	264.300	3137.37	-247.19	-48.78	-902.33	1652245.54	14360128.30	39°32'39.5828"N	80°57'28.9454"W	903.64	266.906	1.51	-0.68	-2.93	
3416.00	26.970	266.550	3222.02	-257.91	-52.22	-945.30	1652202.58	14360124.87	39°32'39.5491"N	80°57'29.4939"W	946.74	266.838	1.08	-0.04	2.37	
3510.00	27.640	273.000	3305.56	-271.77	-52.36	-988.36	1652159.54	14360124.72	39°32'39.5479"N	80°57'30.0436"W	989.74	266.968	3.23	0.71	6.86	
3605.00	27.640	274.690	3389.72	-288.86	-49.40	-1032.33	1652115.59	14360127.68	39°32'39.5773"N	80°57'30.6049"W	1033.51	267.260	0.83	0.00	1.78	
3699.00	26.370	271.270	3473.48	-304.84	-47.16	-1074.93	1652073.00	14360129.92	39°32'39.5996"N	80°57'31.1487"W	1075.97	267.488	2.13	-1.35	-3.64	
3794.00	25.520	267.220	3558.91	-317.84	-47.68	-1116.47	1652031.48	14360129.40	39°32'39.5946"N	80°57'31.6789"W	1117.49	267.555	2.07	-0.89	-4.26	
3889.00	24.060	264.150	3645.16	-327.94	-50.65	-1156.18	1651991.79	14360126.43	39°32'39.5655"N	80°57'32.1858"W	1157.29	267.492	2.05	-1.54	-3.23	
3983.00	22.810	266.110	3731.40	-337.04	-53.84	-1193.42	1651954.56	14360123.24	39°32'39.5342"N	80°57'32.6612"W	1194.63	267.417	1.57	-1.33	2.09	
4077.00	22.350	273.170	3818.21	-348.51	-54.09	-1229.45	1651918.54	14360123.00	39°32'39.5319"N	80°57'33.1212"W	1230.64	267.481	2.92	-0.49	7.51	
4172.00	21.420	274.070	3906.37	-362.11	-51.86	-1264.79	1651883.22	14360125.23	39°32'39.5541"N	80°57'33.5722"W	1265.85	267.652	1.04	-0.98	0.95	
4267.00	19.660	269.070	3995.33	-373.85	-50.88	-1298.08	1651849.94	14360126.20	39°32'39.5638"N	80°57'33.9971"W	1299.08	267.755	2.61	-1.85	-5.26	
4362.00	19.530	268.760	4084.83	-383.63	-51.49	-1329.93	1651818.10	14360125.59	39°32'39.5580"N	80°57'34.4038"W	1330.93	267.783	0.18	-0.14	-0.33	
4456.00	21.470	272.570	4172.88	-394.74	-51.06	-1362.83	1651785.22	14360126.03	39°32'39.5624"N	80°57'34.8237"W	1363.79	267.855	2.50	2.06	4.05	
4551.00	20.900	271.250	4261.46	-406.98	-49.91	-1397.14	1651750.92	14360127.17	39°32'39.5739"N	80°57'35.2617"W	1398.03	267.954	0.78	-0.60	-1.39	
4645.00	18.570	266.470	4349.93	-416.76	-50.46	-1428.85	1651719.23	14360126.62	39°32'39.5686"N	80°57'35.6664"W	1429.74	267.977	3.01	-2.48	-5.09	
4740.00	18.230	265.940	4440.08	-424.61	-52.45	-1458.77	1651689.32	14360124.64	39°32'39.5491"N	80°57'36.0484"W	1459.71	267.941	0.40	-0.36	-0.56	
4834.00	23.560	269.090	4527.87	-434.22	-53.79	-1492.25	1651655.85	14360123.30	39°32'39.5360"N	80°57'36.4757"W	1493.21	267.936	5.79	5.67	3.35	
4928.00	26.710	269.830	4612.96	-446.86	-54.15	-1532.16	1651615.95	14360122.94	39°32'39.5326"N	80°57'36.9852"W	1533.12	267.976	3.37	3.35	0.79	
5023.00	23.900	264.570	4698.84	-458.25	-56.03	-1572.69	1651575.45	14360121.05	39°32'39.5141"N	80°57'37.5025"W	1573.68	267.960	3.79	-2.96	-5.54	
5117.00	23.650	264.100	4784.86	-466.97	-59.77	-1610.40	1651537.75	14360117.31	39°32'39.4773"N	80°57'37.9839"W	1611.50	267.874	0.33	-0.27	-0.50	
5212.00	26.270	269.570	4871.00	-477.97	-61.89	-1650.38	1651497.78	14360115.20	39°32'39.4566"N	80°57'38.4943"W	1651.54	267.852	3.67	2.76	5.76	
5306.00	26.570	267.840	4955.18	-490.66	-62.84	-1692.20	1651455.98	14360114.25	39°32'39.4474"N	80°57'39.0281"W	1693.36	267.873	0.88	0.32	-1.84	
5400.00	24.160	262.930	5040.12	-500.71	-66.00	-1732.30	1651415.89	14360111.09	39°32'39.4163"N	80°57'39.5400"W	1733.56	267.818	3.40	-2.56	-5.22	
5495.00	23.870	265.650	5126.90	-509.57	-69.85	-1770.76	1651377.45	14360107.24	39°32'39.3784"N	80°57'40.0310"W	1772.14	267.741	1.20	-0.31	2.86	

RECEIVED
Office of Oil and Gas
JAN 23 2023
MW Department of
Environmental Protection



Actual Wellpath Report

Wable Unit 2H AWP Proj: 21687'

Page 4 of 12



REFERENCE WELLPATH IDENTIFICATION				
Operator	ANTERO RESOURCES CORPORATION		Well	Wable Unit 2H
Field	Tyler		API	47-095-02781-0000
Facility	Nalley Pad		Wellbore	Wable Unit 2H AWB
Slot	Slot #03			

WELLPATH DATA (237 stations) † = interpolated, ‡ = extrapolated station																
MD [ft]	Inclination [°]	Azimuth [°]	TVD [ft]	Vert Sect [ft]	North [ft]	East [ft]	Grid East [US ft]	Grid North [US ft]	Latitude	Longitude	Closure Dist [ft]	Closure Dir [°]	DLS [°/100ft]	Build Rate [°/100ft]	Turn Rate [°/100ft]	Comments
5589.00	25.790	267.420	5212.21	-520.14	-72.21	-1810.16	1651338.07	14360104.88	39°32'39.3553"N	80°57'40.5339"W	1811.60	267.716	2.19	2.04	1.88	
5684.00	23.340	262.320	5298.61	-529.66	-75.66	-1849.47	1651298.78	14360101.43	39°32'39.3214"N	80°57'41.0357"W	1851.01	267.657	3.41	-2.58	-5.37	
5735.00	21.820	260.950	5345.70	-533.27	-78.50	-1868.84	1651279.41	14360098.59	39°32'39.2934"N	80°57'41.2830"W	1870.49	267.595	3.15	-2.98	-2.69	BH AT Curve <8-1/2"> (5684')(5735'-21662')
5800.00	23.440	256.340	5405.70	-536.55	-83.45	-1893.34	1651254.93	14360093.64	39°32'39.2445"N	80°57'41.5957"W	1895.17	267.476	3.69	2.49	-7.09	
5894.00	26.770	244.610	5490.86	-535.91	-96.96	-1930.66	1651217.61	14360080.14	39°32'39.1112"N	80°57'42.0722"W	1933.09	267.125	6.35	3.54	-12.48	
5989.00	30.060	228.060	5574.54	-524.21	-122.08	-1967.76	1651180.54	14360055.03	39°32'38.8631"N	80°57'42.5459"W	1971.54	266.450	8.95	3.46	-17.42	
6083.00	30.150	207.670	5656.07	-498.75	-158.82	-1996.30	1651152.00	14360018.31	39°32'38.5001"N	80°57'42.9105"W	2002.61	265.451	10.84	0.10	-21.69	
6177.00	33.530	194.180	5736.02	-460.75	-204.97	-2013.65	1651134.65	14359972.17	39°32'38.0440"N	80°57'43.1322"W	2024.06	264.188	8.36	3.60	-14.35	
6272.00	40.330	189.030	5811.93	-411.57	-260.85	-2024.92	1651123.39	14359916.32	39°32'37.4918"N	80°57'43.2763"W	2041.65	262.660	7.86	7.16	-5.42	
6366.00	45.230	184.150	5880.92	-353.97	-324.22	-2032.12	1651116.20	14359852.97	39°32'36.8655"N	80°57'43.3685"W	2057.82	260.935	6.29	5.21	-5.19	
6373.00†	45.678	183.384	5885.83	-349.37	-329.20	-2032.45	1651115.87	14359847.99	39°32'36.8163"N	80°57'43.3727"W	2058.93	260.800	10.09	6.40	-10.95	Sycamore: 6373' MD
6461.00	51.690	174.670	5943.97	-286.58	-395.13	-2031.09	1651117.22	14359782.09	39°32'36.1647"N	80°57'43.3558"W	2069.17	258.991	10.09	6.83	-9.90	
6528.00†	55.918	169.504	5983.54	-233.55	-448.63	-2023.59	1651124.72	14359728.61	39°32'35.6359"N	80°57'43.2603"W	2072.73	257.500	8.86	6.31	-7.71	Middlesex: 6528' MD
6555.00	57.680	167.570	5998.33	-211.15	-470.77	-2019.10	1651129.21	14359706.48	39°32'35.4170"N	80°57'43.2031"W	2073.25	256.875	8.86	6.53	-7.16	
6650.00	57.910	160.620	6049.00	-130.96	-548.00	-1997.08	1651151.22	14359629.28	39°32'34.6537"N	80°57'42.9225"W	2070.91	254.656	6.19	0.24	-7.32	
6675.00†	60.787	161.260	6061.75	-109.45	-568.33	-1990.06	1651158.24	14359608.96	39°32'34.4527"N	80°57'42.8330"W	2069.63	254.062	11.72	11.51	2.56	Burkett: 6675' MD
6733.00†	67.471	162.618	6087.04	-57.30	-617.92	-1973.91	1651174.38	14359559.39	39°32'33.9625"N	80°57'42.6271"W	2068.37	252.618	11.72	11.52	2.34	Marcellus POE: 6733' MD
6744.00	68.740	162.860	6091.14	-47.10	-627.67	-1970.88	1651177.41	14359549.64	39°32'33.8662"N	80°57'42.5885"W	2068.41	252.335	11.72	11.54	2.20	
6839.00	79.760	164.550	6116.89	44.09	-715.30	-1945.30	1651202.98	14359462.05	39°32'33.0000"N	80°57'42.2625"W	2072.64	249.811	11.73	11.60	1.78	
6933.00	84.580	161.680	6129.70	137.11	-804.37	-1918.25	1651230.02	14359373.01	39°32'32.1196"N	80°57'41.9177"W	2080.07	247.251	5.95	5.13	-3.05	
7028.00	89.540	160.170	6134.57	231.95	-894.00	-1887.25	1651261.00	14359283.42	39°32'31.2336"N	80°57'41.5225"W	2088.29	244.653	5.46	5.22	-1.59	
7122.00	88.680	159.810	6136.03	325.92	-982.32	-1855.09	1651293.15	14359195.14	39°32'30.3606"N	80°57'41.1125"W	2099.12	242.098	0.99	-0.91	-0.38	
7216.00	89.010	159.400	6137.92	419.88	-1070.41	-1822.34	1651325.89	14359107.08	39°32'29.4899"N	80°57'40.6949"W	2113.46	239.571	0.56	0.36	-0.44	
7311.00	89.140	160.060	6139.46	514.84	-1159.51	-1789.43	1651358.78	14359018.02	39°32'28.6091"N	80°57'40.2753"W	2132.26	237.058	0.71	0.14	0.69	
7405.00	89.260	159.060	6140.77	608.80	-1247.58	-1756.61	1651391.59	14358929.98	39°32'27.7385"N	80°57'39.8569"W	2154.56	234.617	1.07	0.13	-1.06	
7500.00	88.920	159.990	6142.28	703.75	-1336.57	-1723.38	1651424.81	14358841.03	39°32'26.8589"N	80°57'39.4332"W	2180.93	232.205	1.04	-0.36	0.98	
7595.00	88.610	160.380	6144.33	798.72	-1425.92	-1691.19	1651456.99	14358751.71	39°32'25.9756"N	80°57'39.0228"W	2212.10	229.864	0.52	-0.33	0.41	
7689.00	89.110	160.400	6146.20	892.69	-1514.45	-1659.65	1651488.52	14358663.22	39°32'25.1005"N	80°57'38.6207"W	2246.77	227.619	0.53	0.53	0.02	
7784.00	87.910	160.840	6148.67	987.66	-1604.04	-1628.13	1651520.02	14358573.67	39°32'24.2150"N	80°57'38.2189"W	2285.55	225.427	1.35	-1.26	0.46	
7878.00	89.230	160.860	6151.01	1081.63	-1692.81	-1597.31	1651550.83	14358484.93	39°32'23.3375"N	80°57'37.8260"W	2327.44	223.337	1.40	1.40	0.02	

RECEIVED
 Office of Oil and Gas
 WV Department of
 Environmental Protection
 JAN 23 2023



Actual Wellpath Report

Wable Unit 2H AWP Proj: 21687'
Page 5 of 12



REFERENCE WELLPATH IDENTIFICATION			
Operator	ANTERO RESOURCES CORPORATION	Well	Wable Unit 2H
Field	Tyler	API	47-095-02781-0000
Facility	Nalley Pad	Wellbore	Wable Unit 2H AWB
Slot	Slot #03		

WELLPATH DATA (237 stations)																
MD [ft]	Inclination [°]	Azimuth [°]	TVD [ft]	Vert Sect [ft]	North [ft]	East [ft]	Grid East [US ft]	Grid North [US ft]	Latitude	Longitude	Closure Dist [ft]	Closure Dir [°]	DLS [°/100ft]	Build Rate [°/100ft]	Turn Rate [°/100ft]	Comments
7973.00	89.260	160.710	6152.26	1176.62	-1782.51	-1566.05	1651582.08	14358395.27	39°32'22.4509"N	80°57'37.4274"W	2372.73	221.301	0.16	0.03	-0.16	
8068.00	88.950	160.550	6153.75	1271.60	-1872.12	-1534.54	1651613.58	14358305.69	39°32'21.5651"N	80°57'37.0258"W	2420.67	219.341	0.37	-0.33	-0.17	
8162.00	89.140	160.630	6155.31	1365.59	-1960.76	-1503.31	1651644.80	14358217.09	39°32'20.6888"N	80°57'36.6276"W	2470.73	217.477	0.22	0.20	0.09	
8257.00	89.380	160.860	6156.54	1460.58	-2050.44	-1471.98	1651676.11	14358127.44	39°32'19.8024"N	80°57'36.2283"W	2524.09	215.674	0.35	0.25	0.24	
8351.00	89.630	160.910	6157.35	1554.57	-2139.25	-1441.20	1651706.88	14358038.66	39°32'18.9245"N	80°57'35.8359"W	2579.43	213.968	0.27	0.27	0.05	
8446.00	89.630	160.760	6157.97	1649.57	-2228.99	-1410.01	1651738.05	14357948.97	39°32'18.0375"N	80°57'35.4384"W	2637.52	212.317	0.16	0.00	-0.16	
8541.00	89.880	160.910	6158.37	1744.57	-2318.72	-1378.83	1651769.23	14357859.27	39°32'17.1505"N	80°57'35.0408"W	2697.71	210.738	0.31	0.26	0.16	
8635.00	89.540	160.990	6158.85	1838.57	-2407.57	-1348.15	1651799.90	14357770.46	39°32'16.2722"N	80°57'34.6497"W	2759.33	209.247	0.37	-0.36	0.09	
8730.00	89.170	160.780	6159.92	1933.56	-2497.33	-1317.04	1651830.99	14357680.74	39°32'15.3850"N	80°57'34.2532"W	2823.34	207.806	0.45	-0.39	-0.22	
8824.00	89.380	160.490	6161.11	2027.55	-2586.00	-1285.87	1651862.14	14357592.10	39°32'14.5084"N	80°57'33.8559"W	2888.06	206.439	0.38	0.22	-0.31	
8919.00	89.630	160.820	6161.93	2122.55	-2675.64	-1254.40	1651893.60	14357502.50	39°32'13.6224"N	80°57'33.4548"W	2955.09	205.118	0.44	0.26	0.35	
9013.00	89.880	162.200	6162.33	2216.54	-2764.78	-1224.59	1651923.40	14357413.39	39°32'12.7413"N	80°57'33.0748"W	3023.85	203.890	1.49	0.27	1.47	
9108.00	89.570	161.120	6162.79	2311.53	-2854.95	-1194.70	1651953.28	14357323.25	39°32'11.8499"N	80°57'32.6938"W	3094.85	202.708	1.18	-0.33	-1.14	
9203.00	89.510	160.600	6163.55	2406.53	-2944.70	-1163.56	1651984.41	14357233.55	39°32'10.9628"N	80°57'32.2968"W	3166.24	201.561	0.55	-0.06	-0.55	
9298.00	89.660	160.580	6164.24	2501.52	-3034.30	-1131.99	1652015.97	14357143.98	39°32'10.0771"N	80°57'31.8944"W	3238.57	200.459	0.16	0.16	-0.02	
9392.00	89.910	161.180	6164.59	2595.52	-3123.11	-1101.20	1652046.75	14357055.21	39°32'9.1992"N	80°57'31.5019"W	3311.56	199.422	0.69	0.27	0.64	
9487.00	89.290	160.330	6165.25	2690.52	-3212.80	-1069.88	1652078.04	14356965.55	39°32'8.3127"N	80°57'31.1028"W	3386.25	198.418	1.11	-0.65	-0.89	
9581.00	89.660	160.510	6166.11	2784.51	-3301.36	-1038.38	1652109.53	14356877.03	39°32'7.4373"N	80°57'30.7013"W	3460.81	197.460	0.44	0.39	0.19	
9676.00	89.750	160.960	6166.60	2879.50	-3391.04	-1007.04	1652140.86	14356787.39	39°32'6.5508"N	80°57'30.3018"W	3537.41	196.540	0.48	0.09	0.47	
9771.00	89.660	160.780	6167.09	2974.50	-3480.79	-975.91	1652171.98	14356697.67	39°32'5.6636"N	80°57'29.9050"W	3615.01	195.662	0.21	-0.09	-0.19	
9865.00	89.750	160.360	6167.58	3068.50	-3569.43	-944.64	1652203.24	14356609.06	39°32'4.7874"N	80°57'29.5064"W	3692.32	194.823	0.46	0.10	-0.45	
9960.00	89.820	160.830	6167.93	3163.49	-3659.04	-913.08	1652234.79	14356519.49	39°32'3.9016"N	80°57'29.1041"W	3771.24	194.011	0.50	0.07	0.49	
10054.00	89.820	160.600	6168.23	3257.49	-3747.76	-882.03	1652265.82	14356430.80	39°32'3.0246"N	80°57'28.7084"W	3850.16	193.244	0.24	0.00	-0.24	
10149.00	89.510	159.630	6168.78	3352.48	-3837.09	-849.72	1652298.12	14356341.51	39°32'2.1416"N	80°57'28.2965"W	3930.05	192.487	1.07	-0.33	-1.02	
10243.00	89.380	160.650	6169.69	3446.46	-3925.50	-817.79	1652330.04	14356253.14	39°32'1.2677"N	80°57'27.8895"W	4009.78	191.768	1.09	-0.14	1.09	
10338.00	89.350	160.270	6170.75	3541.45	-4015.02	-786.02	1652361.80	14356163.65	39°32'0.3827"N	80°57'27.4846"W	4091.24	191.077	0.40	-0.03	-0.40	
10432.00	89.910	161.040	6171.35	3635.44	-4103.71	-754.88	1652392.92	14356075.00	39°31'59.5061"N	80°57'27.0877"W	4172.56	190.423	1.01	0.60	0.82	
10527.00	89.350	160.020	6171.97	3730.44	-4193.28	-723.22	1652424.57	14355985.47	39°31'58.6207"N	80°57'26.6841"W	4255.19	189.786	1.22	-0.59	-1.07	
10621.00	89.290	159.520	6173.08	3824.41	-4281.47	-690.71	1652457.06	14355897.31	39°31'57.7489"N	80°57'26.2698"W	4336.83	189.164	0.54	-0.06	-0.53	
10716.00	89.170	159.560	6174.36	3919.37	-4370.47	-657.51	1652490.25	14355808.35	39°31'56.8691"N	80°57'25.8466"W	4419.65	188.556	0.13	-0.13	0.04	

RECEIVED
Office of Oil and Gas
JAN 23 2023
WV Department of
Environmental Protection



Actual Wellpath Report

Wable Unit 2H AWP Proj: 21687'

Page 6 of 12



REFERENCE WELLPATH IDENTIFICATION

Operator	ANTERO RESOURCES CORPORATION	Well	Wable Unit 2H
Field	Tyler	API	47-095-02781-0000
Facility	Nalley Pad	Wellbore	Wable Unit 2H AWB
Slot	Slot #03		

WELLPATH DATA (237 stations)

MD [ft]	Inclination [°]	Azimuth [°]	TVD [ft]	Vert Sect [ft]	North [ft]	East [ft]	Grid East [US ft]	Grid North [US ft]	Latitude	Longitude	Closure Dist [ft]	Closure Dir [°]	DLS [°/100ft]	Build Rate [°/100ft]	Turn Rate [°/100ft]	Comments
10811.00	89.350	160.400	6175.59	4014.34	-4459.72	-624.99	1652522.76	14355719.13	39°31'55.9869"N	80°57'25.4321"W	4503.30	187.978	0.90	0.19	0.88	
10905.00	89.110	159.980	6176.85	4108.32	-4548.15	-593.14	1652554.60	14355630.74	39°31'55.1128"N	80°57'25.0261"W	4586.66	187.430	0.51	-0.26	-0.45	
11000.00	89.540	159.330	6177.97	4203.29	-4637.22	-560.11	1652587.62	14355541.71	39°31'54.2323"N	80°57'24.6051"W	4670.92	186.887	0.82	0.45	-0.68	
11095.00	89.780	160.380	6178.53	4298.27	-4726.40	-527.39	1652620.32	14355452.56	39°31'53.3507"N	80°57'24.1881"W	4755.74	186.367	1.13	0.25	1.11	
11189.00	89.540	160.350	6179.09	4392.26	-4814.93	-495.81	1652651.89	14355364.06	39°31'52.4756"N	80°57'23.7856"W	4840.39	185.879	0.26	-0.26	-0.03	
11284.00	89.600	161.400	6179.80	4487.25	-4904.69	-464.68	1652683.00	14355274.34	39°31'51.5884"N	80°57'23.3889"W	4926.65	185.412	1.11	0.06	1.11	
11379.00	89.910	161.570	6180.21	4582.25	-4994.77	-434.52	1652713.16	14355184.30	39°31'50.6979"N	80°57'23.0045"W	5013.63	184.972	0.37	0.33	0.18	
11473.00	89.660	161.700	6180.56	4676.24	-5083.98	-404.90	1652742.76	14355095.12	39°31'49.8161"N	80°57'22.6270"W	5100.08	184.554	0.30	-0.27	0.14	
11568.00	89.600	161.300	6181.18	4771.24	-5174.07	-374.76	1652772.89	14355005.07	39°31'48.9256"N	80°57'22.2429"W	5187.62	184.143	0.43	-0.06	-0.42	
11663.00	89.630	161.680	6181.81	4866.23	-5264.15	-344.60	1652803.04	14354915.02	39°31'48.0351"N	80°57'21.8586"W	5275.42	183.745	0.40	0.03	0.40	
11757.00	89.540	161.480	6182.50	4960.23	-5353.33	-314.90	1652832.73	14354825.88	39°31'47.1536"N	80°57'21.4801"W	5362.59	183.366	0.23	-0.10	-0.21	
11852.00	89.170	160.780	6183.56	5055.22	-5443.22	-284.17	1652863.44	14354736.02	39°31'46.2650"N	80°57'21.0885"W	5450.64	182.989	0.83	-0.39	-0.74	
11947.00	89.110	160.630	6184.99	5150.21	-5532.88	-252.79	1652894.82	14354646.41	39°31'45.3788"N	80°57'20.6885"W	5538.65	182.616	0.17	-0.06	-0.16	
12041.00	89.450	161.280	6186.17	5244.20	-5621.72	-222.12	1652925.47	14354557.60	39°31'44.5005"N	80°57'20.2977"W	5626.11	182.263	0.78	0.36	0.69	
12136.00	89.450	161.120	6187.08	5339.19	-5711.65	-191.50	1652956.08	14354467.70	39°31'43.6116"N	80°57'19.9075"W	5714.86	181.920	0.17	0.00	-0.17	
12231.00	89.600	161.260	6187.87	5434.19	-5801.57	-160.87	1652986.69	14354377.82	39°31'42.7227"N	80°57'19.5172"W	5803.80	181.588	0.22	0.16	0.15	
12325.00	90.030	159.940	6188.17	5528.18	-5890.23	-129.65	1653017.90	14354289.19	39°31'41.8463"N	80°57'19.1193"W	5891.66	181.261	1.48	0.46	-1.40	
12420.00	89.290	161.630	6188.74	5623.18	-5979.94	-98.39	1653049.15	14354199.53	39°31'40.9596"N	80°57'18.7209"W	5980.75	180.943	1.94	-0.78	1.78	
12515.00	90.460	162.410	6188.95	5718.16	-6070.29	-69.06	1653078.47	14354109.20	39°31'40.0664"N	80°57'18.3472"W	6070.69	180.652	1.48	1.23	0.82	
12609.00	89.170	161.240	6189.25	5812.15	-6159.60	-39.74	1653107.77	14354019.93	39°31'39.1836"N	80°57'17.9736"W	6159.73	180.370	1.85	-1.37	-1.24	
12704.00	90.490	161.670	6189.53	5907.14	-6249.67	-9.53	1653137.98	14353929.91	39°31'38.2934"N	80°57'17.5886"W	6249.67	180.087	1.46	1.39	0.45	
12798.00	89.540	161.380	6189.51	6001.14	-6338.82	20.26	1653167.75	14353840.79	39°31'37.4121"N	80°57'17.2091"W	6338.85	179.817	1.06	-1.01	-0.31	
12893.00	89.420	161.020	6190.37	6096.13	-6428.75	50.87	1653198.35	14353750.90	39°31'36.5231"N	80°57'16.8190"W	6428.95	179.547	0.40	-0.13	-0.38	
12987.00	91.450	162.270	6189.66	6190.12	-6517.96	80.47	1653227.94	14353661.72	39°31'35.6413"N	80°57'16.4418"W	6518.45	179.293	2.54	2.16	1.33	
13082.00	89.450	162.030	6188.91	6285.09	-6608.38	109.59	1653257.05	14353571.34	39°31'34.7475"N	80°57'16.0708"W	6609.28	179.050	2.12	-2.11	-0.25	
13176.00	89.450	161.540	6189.81	6379.08	-6697.66	138.97	1653286.41	14353482.09	39°31'33.8649"N	80°57'15.6964"W	6699.10	178.811	0.52	0.00	-0.52	
13270.00	89.320	161.580	6190.82	6473.07	-6786.83	168.70	1653316.13	14353392.96	39°31'32.9835"N	80°57'15.3176"W	6788.93	178.576	0.14	-0.14	0.04	
13365.00	89.290	159.640	6191.97	6568.06	-6876.43	200.24	1653347.66	14353303.39	39°31'32.0978"N	80°57'14.9157"W	6879.34	178.332	2.04	-0.03	-2.04	
13460.00	89.720	161.130	6192.79	6663.04	-6965.91	232.13	1653379.53	14353213.95	39°31'31.2133"N	80°57'14.5094"W	6969.78	178.091	1.63	0.45	1.57	
13554.00	89.050	160.780	6193.80	6757.04	-7054.76	262.80	1653410.19	14353125.13	39°31'30.3350"N	80°57'14.1185"W	7059.65	177.867	0.80	-0.71	-0.37	

RECEIVED
 Office of Oil and Gas
 JAN 23 2023
 WV Department of
 Environmental Protection



Actual Wellpath Report

Wable Unit 2H AWP Proj: 21687'
Page 7 of 12



REFERENCE WELLPATH IDENTIFICATION			
Operator	ANTERO RESOURCES CORPORATION	Well	Wable Unit 2H
Field	Tyler	API	47-095-02781-0000
Facility	Nalley Pad	Wellbore	Wable Unit 2H AWB
Slot	Slot #03		

WELLPATH DATA (237 stations)																
MD [ft]	Inclination [°]	Azimuth [°]	TVD [ft]	Vert Sect [ft]	North [ft]	East [ft]	Grid East [US ft]	Grid North [US ft]	Latitude	Longitude	Closure Dist [ft]	Closure Dir [°]	DLS [°/100ft]	Build Rate [°/100ft]	Turn Rate [°/100ft]	Comments
13649.00	90.120	161.850	6194.49	6852.03	-7144.75	293.23	1653440.61	14353035.18	39°31'29.4455"N	80°57'13.7308"W	7150.76	177.650	1.59	1.13	1.13	
13743.00	89.660	161.640	6194.67	6946.02	-7234.02	322.68	1653470.05	14352945.95	39°31'28.5630"N	80°57'13.3556"W	7241.21	177.446	0.54	-0.49	-0.22	
13837.00	88.980	160.900	6195.79	7040.01	-7323.03	352.86	1653500.22	14352856.97	39°31'27.6831"N	80°57'12.9710"W	7331.53	177.241	1.07	-0.72	-0.79	
13932.00	89.750	162.010	6196.84	7135.00	-7413.09	383.07	1653530.42	14352766.95	39°31'26.7929"N	80°57'12.5861"W	7422.98	177.042	1.42	0.81	1.17	
14026.00	89.480	161.070	6197.47	7229.00	-7502.25	412.83	1653560.17	14352677.82	39°31'25.9115"N	80°57'12.2069"W	7513.60	176.850	1.04	-0.29	-1.00	
14121.00	89.660	159.660	6198.18	7323.98	-7591.72	444.75	1653592.08	14352588.39	39°31'25.0271"N	80°57'11.8001"W	7604.74	176.647	1.50	0.19	-1.48	
14215.00	90.150	161.630	6198.34	7417.98	-7680.40	475.91	1653623.21	14352499.74	39°31'24.1505"N	80°57'11.4032"W	7695.13	176.454	2.16	0.52	2.10	
14310.00	89.750	161.810	6198.42	7512.97	-7770.61	505.70	1653653.00	14352409.57	39°31'23.2588"N	80°57'11.0235"W	7787.05	176.276	0.46	-0.42	0.19	
14405.00	89.720	161.260	6198.86	7607.97	-7860.72	535.79	1653683.08	14352319.50	39°31'22.3681"N	80°57'10.6402"W	7878.96	176.101	0.58	-0.03	-0.58	
14499.00	89.660	160.860	6199.37	7701.96	-7949.63	566.30	1653713.57	14352230.63	39°31'21.4892"N	80°57'10.2514"W	7969.77	175.925	0.43	-0.06	-0.43	
14594.00	89.320	161.570	6200.22	7796.96	-8039.56	596.89	1653744.15	14352140.73	39°31'20.6002"N	80°57'9.8617"W	8061.69	175.754	0.83	-0.36	0.75	
14688.00	89.290	161.990	6201.36	7890.94	-8128.84	626.28	1653773.53	14352051.48	39°31'19.7176"N	80°57'9.4872"W	8152.93	175.594	0.45	-0.03	0.45	
14782.00	89.140	160.900	6202.64	7984.93	-8217.95	656.19	1653803.43	14351962.42	39°31'18.8368"N	80°57'9.1062"W	8244.10	175.435	1.17	-0.16	-1.16	
14877.00	90.090	161.880	6203.28	8079.92	-8307.98	686.50	1653833.73	14351872.42	39°31'17.9469"N	80°57'8.7199"W	8336.29	175.276	1.44	1.00	1.03	
14971.00	88.920	161.700	6204.10	8173.91	-8397.26	715.88	1653863.09	14351783.17	39°31'17.0643"N	80°57'8.3457"W	8427.72	175.127	1.26	-1.24	-0.19	
15066.00	89.170	161.020	6205.68	8268.90	-8487.27	746.24	1653893.44	14351693.20	39°31'16.1746"N	80°57'7.9589"W	8520.01	174.975	0.76	0.26	-0.72	
15161.00	88.710	161.060	6207.44	8363.88	-8577.10	777.10	1653924.29	14351603.41	39°31'15.2866"N	80°57'7.5657"W	8612.23	174.823	0.49	-0.48	0.04	
15256.00	89.260	161.520	6209.12	8458.86	-8667.06	807.57	1653954.74	14351513.48	39°31'14.3973"N	80°57'7.1775"W	8704.60	174.677	0.75	0.58	0.48	
15350.00	89.050	161.100	6210.51	8552.85	-8756.09	837.69	1653984.85	14351424.48	39°31'13.5172"N	80°57'6.7938"W	8796.07	174.535	0.50	-0.22	-0.45	
15445.00	88.520	161.700	6212.52	8647.83	-8846.11	867.98	1654015.13	14351334.50	39°31'12.6273"N	80°57'6.4079"W	8888.59	174.396	0.84	-0.56	0.63	
15539.00	88.620	161.220	6214.87	8741.79	-8935.21	897.86	1654045.00	14351245.44	39°31'11.7466"N	80°57'6.0272"W	8980.20	174.262	0.52	0.11	-0.51	
15634.00	89.320	161.120	6216.57	8836.78	-9025.11	928.52	1654075.64	14351155.58	39°31'10.8580"N	80°57'5.6366"W	9072.74	174.126	0.74	0.74	-0.11	
15728.00	89.750	160.310	6217.34	8930.77	-9113.83	959.56	1654106.68	14351066.89	39°31'9.9809"N	80°57'5.2411"W	9164.20	173.990	0.98	0.46	-0.86	
15823.00	89.080	158.730	6218.31	9025.73	-9202.82	992.80	1654139.90	14350977.94	39°31'9.1013"N	80°57'4.8176"W	9256.21	173.843	1.81	-0.71	-1.66	
15917.00	90.060	161.660	6219.01	9119.71	-9291.24	1024.64	1654171.73	14350889.55	39°31'8.2271"N	80°57'4.4119"W	9347.57	173.707	3.29	1.04	3.12	
16012.00	89.660	160.950	6219.24	9214.71	-9381.23	1055.09	1654202.17	14350799.60	39°31'7.3376"N	80°57'4.0239"W	9440.37	173.583	0.86	-0.42	-0.75	
16106.00	89.570	160.430	6219.88	9308.70	-9469.94	1086.17	1654233.24	14350710.93	39°31'6.4607"N	80°57'3.6279"W	9532.03	173.457	0.56	-0.10	-0.55	
16201.00	89.660	160.460	6220.51	9403.69	-9559.46	1117.97	1654265.02	14350621.44	39°31'5.5758"N	80°57'3.2228"W	9624.61	173.330	0.10	0.09	0.03	
16296.00	89.480	159.890	6221.23	9498.68	-9648.82	1150.19	1654297.23	14350532.11	39°31'4.6924"N	80°57'2.8124"W	9717.14	173.202	0.63	-0.19	-0.60	
16390.00	89.570	160.340	6222.01	9592.67	-9737.22	1182.16	1654329.19	14350443.76	39°31'3.8186"N	80°57'2.4050"W	9808.71	173.078	0.49	0.10	0.48	

RECEIVED
Office of Oil and Gas
JAN 23 2023
WV Department of
Environmental Protection



Actual Wellpath Report

Wable Unit 2H AWP Proj: 21687'

Page 8 of 12



REFERENCE WELLPATH IDENTIFICATION

Operator	ANTERO RESOURCES CORPORATION	Well	Wable Unit 2H
Field	Tyler	API	47-095-02781-0000
Facility	Nalley Pad	Wellbore	Wable Unit 2H AWB
Slot	Slot #03		

WELLPATH DATA (237 stations)

MD [ft]	Inclination [°]	Azimuth [°]	TVD [ft]	Vert Sect [ft]	North [ft]	East [ft]	Grid East [US ft]	Grid North [US ft]	Latitude	Longitude	Closure Dist [ft]	Closure Dir [°]	DLS ["/100ft]	Build Rate ["/100ft]	Turn Rate ["/100ft]	Comments
16485.00	90.550	161.880	6221.91	9687.66	-9827.10	1212.92	1654359.93	14350353.91	39°31'2.9301"N	80°57'2.0132"W	9901.66	172.964	1.92	1.03	1.62	
16579.00	89.480	161.450	6221.88	9781.65	-9916.32	1242.48	1654389.49	14350264.72	39°31'2.0481"N	80°57'1.6365"W	9993.86	172.858	1.23	-1.14	-0.46	
16674.00	89.510	161.270	6222.72	9876.65	-10006.33	1272.85	1654419.84	14350174.75	39°31'1.1583"N	80°57'1.2497"W	10086.97	172.751	0.19	0.03	-0.19	
16769.00	89.600	161.170	6223.46	9971.64	-10096.27	1303.43	1654450.41	14350084.84	39°31'0.2692"N	80°57'0.8601"W	10180.06	172.644	0.14	0.09	-0.11	
16863.00	89.660	161.870	6224.06	10065.64	-10185.42	1333.23	1654480.19	14349995.73	39°30'59.3880"N	80°57'0.4806"W	10272.31	172.543	0.75	0.06	0.74	
16958.00	89.630	161.430	6224.65	10160.63	-10275.59	1363.13	1654510.08	14349905.60	39°30'58.4967"N	80°57'0.0996"W	10365.61	172.443	0.46	-0.03	-0.46	
17053.00	88.830	161.520	6225.93	10255.62	-10365.66	1393.31	1654540.25	14349815.56	39°30'57.6063"N	80°56'59.7152"W	10458.88	172.344	0.85	-0.84	0.09	
17147.00	88.680	161.300	6227.97	10349.59	-10454.74	1423.27	1654570.20	14349726.53	39°30'56.7258"N	80°56'59.3335"W	10551.17	172.248	0.28	-0.16	-0.23	
17242.00	89.450	160.750	6229.52	10444.58	-10544.56	1454.16	1654601.07	14349636.74	39°30'55.8379"N	80°56'58.9401"W	10644.36	172.148	1.00	0.81	-0.58	
17336.00	89.480	161.690	6230.40	10538.58	-10633.55	1484.42	1654631.32	14349547.78	39°30'54.9582"N	80°56'58.5546"W	10736.66	172.053	1.00	0.03	1.00	
17431.00	89.660	160.340	6231.11	10633.57	-10723.38	1515.32	1654662.21	14349457.99	39°30'54.0702"N	80°56'58.1609"W	10829.91	171.957	1.43	0.19	-1.42	
17526.00	89.350	161.580	6231.93	10728.56	-10813.18	1546.31	1654693.19	14349368.23	39°30'53.1825"N	80°56'57.7662"W	10923.18	171.862	1.35	-0.33	1.31	
17621.00	89.350	161.530	6233.01	10823.55	-10903.29	1576.37	1654723.23	14349278.15	39°30'52.2917"N	80°56'57.3833"W	11016.65	171.773	0.05	0.00	-0.05	
17715.00	89.600	161.590	6233.87	10917.55	-10992.46	1606.10	1654752.95	14349189.02	39°30'51.4103"N	80°56'57.0046"W	11109.17	171.687	0.27	0.27	0.06	
17810.00	89.200	161.770	6234.87	11012.54	-11082.64	1635.96	1654782.80	14349098.87	39°30'50.5188"N	80°56'56.6243"W	11202.73	171.603	0.46	-0.42	0.19	
17905.00	89.320	161.780	6236.09	11107.52	-11172.87	1665.67	1654812.50	14349008.68	39°30'49.6269"N	80°56'56.2459"W	11296.34	171.521	0.13	0.13	0.01	
17999.00	89.050	161.280	6237.43	11201.51	-11262.01	1695.44	1654842.26	14348919.57	39°30'48.7457"N	80°56'55.8666"W	11388.92	171.439	0.60	-0.29	-0.53	
18094.00	89.320	161.910	6238.78	11296.49	-11352.15	1725.43	1654872.24	14348829.48	39°30'47.8547"N	80°56'55.4846"W	11482.52	171.358	0.72	0.28	0.66	
18189.00	89.420	161.960	6239.83	11391.47	-11442.46	1754.89	1654901.69	14348739.20	39°30'46.9620"N	80°56'55.1094"W	11576.25	171.281	0.12	0.11	0.05	
18284.00	89.350	162.040	6240.85	11486.45	-11532.80	1784.25	1654931.03	14348648.89	39°30'46.0689"N	80°56'54.7355"W	11670.01	171.205	0.11	-0.07	0.08	
18378.00	89.350	162.100	6241.91	11580.43	-11622.23	1813.18	1654959.96	14348559.50	39°30'45.1849"N	80°56'54.3669"W	11762.82	171.133	0.06	0.00	0.06	
18473.00	89.320	161.970	6243.02	11675.41	-11712.59	1842.48	1654989.24	14348469.17	39°30'44.2916"N	80°56'53.9938"W	11856.63	171.060	0.14	-0.03	-0.14	
18568.00	89.380	162.290	6244.09	11770.39	-11803.00	1871.63	1655018.38	14348378.80	39°30'43.3979"N	80°56'53.6225"W	11950.48	170.989	0.34	0.06	0.34	
18662.00	89.320	162.020	6245.16	11864.36	-11892.48	1900.44	1655047.17	14348289.36	39°30'42.5135"N	80°56'53.2557"W	12043.37	170.921	0.29	-0.06	-0.29	
18757.00	89.260	161.860	6246.34	11959.34	-11982.79	1929.89	1655076.61	14348199.09	39°30'41.6207"N	80°56'52.8806"W	12137.20	170.851	0.18	-0.06	-0.17	
18852.00	89.260	161.380	6247.56	12054.33	-12072.93	1959.84	1655106.55	14348108.98	39°30'40.7296"N	80°56'52.4991"W	12230.97	170.779	0.51	0.00	-0.51	
18946.00	89.290	162.030	6248.75	12148.32	-12162.18	1989.34	1655136.04	14348019.77	39°30'39.8474"N	80°56'52.1233"W	12323.80	170.711	0.69	0.03	0.69	
19041.00	89.320	161.760	6249.91	12243.30	-12252.47	2018.86	1655165.55	14347929.52	39°30'38.9549"N	80°56'51.7473"W	12417.68	170.643	0.29	0.03	-0.28	
19135.00	89.380	162.000	6250.97	12337.28	-12341.80	2048.10	1655194.77	14347840.22	39°30'38.0718"N	80°56'51.3750"W	12510.58	170.578	0.26	0.06	0.26	
19230.00	89.380	162.000	6252.00	12432.26	-12432.14	2077.45	1655224.12	14347749.91	39°30'37.1787"N	80°56'51.0012"W	12604.52	170.513	0.00	0.00	0.00	

RECEIVED
 Office of Oil and Gas
 JAN 23 2023
 WV Department of
 Environmental Protection



Actual Wellpath Report

Wable Unit 2H AWP Proj: 21687'
Page 9 of 12



REFERENCE WELLPATH IDENTIFICATION			
Operator	ANTERO RESOURCES CORPORATION	Well	Wable Unit 2H
Field	Tyler	API	47-095-02781-0000
Facility	Nalley Pad	Wellbore	Wable Unit 2H AWB
Slot	Slot #03		

WELLPATH DATA (237 stations) † = interpolated, ‡ = extrapolated station																
MD [ft]	Inclination [°]	Azimuth [°]	TVD [ft]	Vert Sect [ft]	North [ft]	East [ft]	Grid East [US ft]	Grid North [US ft]	Latitude	Longitude	Closure Dist [ft]	Closure Dir [°]	DLS [°/100ft]	Build Rate [°/100ft]	Turn Rate [°/100ft]	Comments
19325.00	89.380	162.080	6253.03	12527.24	-12522.51	2106.74	1655253.40	14347659.58	39°30'36.2854"N	80°56'50.6281"W	12698.49	170.450	0.08	0.00	0.08	
19419.00	89.320	161.970	6254.09	12621.22	-12611.91	2135.75	1655282.39	14347570.21	39°30'35.4016"N	80°56'50.2587"W	12791.47	170.389	0.13	-0.06	-0.12	
19514.00	89.140	161.890	6255.37	12716.20	-12702.22	2165.21	1655311.84	14347479.94	39°30'34.5089"N	80°56'49.8835"W	12885.44	170.326	0.21	-0.19	-0.08	
19609.00	89.020	161.680	6256.90	12811.18	-12792.45	2194.91	1655341.52	14347389.75	39°30'33.6170"N	80°56'49.5053"W	12979.38	170.264	0.25	-0.13	-0.22	
19704.00	89.080	161.490	6258.47	12906.16	-12882.57	2224.91	1655371.52	14347299.66	39°30'32.7261"N	80°56'49.1232"W	13073.29	170.201	0.21	0.06	-0.20	
19798.00	89.320	160.950	6259.78	13000.15	-12971.56	2255.17	1655401.76	14347210.71	39°30'31.8465"N	80°56'48.7378"W	13166.14	170.137	0.63	0.26	-0.57	
19893.00	89.350	161.130	6260.89	13095.15	-13061.40	2286.03	1655432.62	14347120.91	39°30'30.9584"N	80°56'48.3447"W	13259.94	170.073	0.19	0.03	0.19	
19987.00	89.970	160.550	6261.44	13189.14	-13150.19	2316.88	1655463.45	14347032.16	39°30'30.0806"N	80°56'47.9517"W	13352.73	170.008	0.90	0.66	-0.62	
20082.00	89.820	160.390	6261.62	13284.14	-13239.72	2348.64	1655495.20	14346942.66	39°30'29.1956"N	80°56'47.5472"W	13446.43	169.941	0.23	-0.16	-0.17	
20177.00	89.780	160.660	6261.95	13379.14	-13329.29	2380.32	1655526.86	14346853.13	39°30'28.3102"N	80°56'47.1438"W	13540.15	169.875	0.29	-0.04	0.28	
20271.00	90.000	160.980	6262.13	13473.13	-13418.07	2411.20	1655557.73	14346764.38	39°30'27.4325"N	80°56'46.7505"W	13632.99	169.813	0.41	0.23	0.34	
20366.00	90.220	161.110	6261.95	13568.13	-13507.92	2442.06	1655588.58	14346674.57	39°30'26.5444"N	80°56'46.3575"W	13726.89	169.752	0.27	0.23	0.14	
20460.00	90.030	161.210	6261.74	13662.13	-13596.88	2472.41	1655618.92	14346585.64	39°30'25.6649"N	80°56'45.9709"W	13819.84	169.694	0.23	-0.20	0.11	
20555.00	90.060	160.860	6261.67	13757.13	-13686.72	2503.29	1655649.78	14346495.84	39°30'24.7768"N	80°56'45.5777"W	13913.76	169.635	0.37	0.03	-0.37	
20649.00	89.910	159.270	6261.69	13851.12	-13775.09	2535.33	1655681.82	14346407.51	39°30'23.9033"N	80°56'45.1695"W	14006.46	169.571	1.70	-0.16	-1.69	
20744.00	89.540	159.810	6262.15	13946.08	-13864.09	2568.54	1655715.01	14346318.54	39°30'23.0234"N	80°56'44.7465"W	14100.02	169.504	0.69	-0.39	0.57	
20838.00	89.380	159.520	6263.03	14040.05	-13952.23	2601.21	1655747.66	14346230.43	39°30'22.1521"N	80°56'44.3305"W	14192.64	169.439	0.35	-0.17	-0.31	
20933.00	89.600	159.940	6263.88	14135.02	-14041.34	2634.12	1655780.56	14346141.36	39°30'21.2712"N	80°56'43.9113"W	14286.28	169.375	0.50	0.23	0.44	
21028.00	89.850	159.730	6264.34	14230.00	-14130.52	2666.86	1655813.29	14346052.22	39°30'20.3896"N	80°56'43.4942"W	14379.98	169.312	0.34	0.26	-0.22	
21122.00	89.720	159.730	6264.69	14323.98	-14218.70	2699.43	1655845.85	14345964.08	39°30'19.5179"N	80°56'43.0794"W	14472.67	169.250	0.14	-0.14	0.00	
21217.00	89.720	159.830	6265.15	14418.95	-14307.84	2732.26	1655878.67	14345874.97	39°30'18.6367"N	80°56'42.6612"W	14566.39	169.189	0.11	0.00	0.11	
21311.00	89.820	160.160	6265.53	14512.94	-14396.17	2764.42	1655910.81	14345786.67	39°30'17.7635"N	80°56'42.2516"W	14659.19	169.130	0.37	0.11	0.35	
21406.00	89.780	160.370	6265.86	14607.93	-14485.59	2796.50	1655942.88	14345697.29	39°30'16.8796"N	80°56'41.8431"W	14753.06	169.073	0.23	-0.04	0.22	
21500.00	89.690	159.950	6266.30	14701.92	-14574.01	2828.40	1655974.77	14345608.91	39°30'16.0055"N	80°56'41.4368"W	14845.93	169.017	0.46	-0.10	-0.45	
21595.00	89.690	159.770	6266.81	14796.89	-14663.20	2861.11	1656007.46	14345519.75	39°30'15.1238"N	80°56'41.0202"W	14939.72	168.959	0.19	0.00	-0.19	
21662.00	89.780	159.590	6267.12	14863.88	-14726.03	2884.38	1656030.72	14345456.95	39°30'14.5027"N	80°56'40.7239"W	15005.85	168.918	0.30	0.13	-0.27	
21687.00†	89.780	159.590	6267.22	14888.87	-14749.46	2893.10	1656039.43	14345433.53	39°30'14.2711"N	80°56'40.6128"W	15030.52	168.902	0.00	0.00	0.00	Projected MD at TD: 21687'

RECEIVED
Office of Oil and Gas
JAN 23 2023
WV Department of
Environmental Protection



Actual Wellpath Report

Wable Unit 2H AWP Proj: 21687'

Page 10 of 12



REFERENCE WELLPATH IDENTIFICATION			
Operator	ANTERO RESOURCES CORPORATION	Well	Wable Unit 2H
Field	Tyler	API	47-095-02781-0000
Facility	Nalley Pad	Wellbore	Wable Unit 2H AWB
Slot	Slot #03		

HOLE & CASING SECTIONS - Ref Wellbore: Wable Unit 2H AWB Ref Wellpath: Wable Unit 2H AWP Proj: 21687'									
String/Diameter	Start MD [ft]	End MD [ft]	Interval [ft]	Start TVD [ft]	End TVD [ft]	Start N/S [ft]	Start E/W [ft]	End N/S [ft]	End E/W [ft]
20in Conductor	30.00	130.00	100.00	30.00	129.99	0.00	0.00	0.84	-0.37
17.5in Open Hole	130.00	389.00	259.00	129.99	388.98	0.84	-0.37	2.96	-1.45
13.375in Casing Surface	30.00	369.00	339.00	30.00	368.98	0.00	0.00	2.84	-1.34
12.25in Open Hole	389.00	2641.00	2252.00	388.98	2533.37	2.96	-1.45	-31.54	-591.62
9.625in Casing Intermediate	30.00	2621.00	2591.00	30.00	2515.09	0.00	0.00	-30.35	-583.58
8.75in Open Hole	2641.00	5760.00	3119.00	2533.37	5368.86	-31.54	-591.62	-80.13	-1878.11
8.5in Open Hole	5760.00	21687.00	15927.00	5368.86	6267.22	-80.13	-1878.11	-14749.46	2893.10
5.5in Casing Production	30.00	21667.00	21637.00	30.00	6267.14	0.00	0.00	-14730.71	2886.12



Actual Wellpath Report

Wable Unit 2H AWP Proj: 21687'

Page 11 of 12



REFERENCE WELLPATH IDENTIFICATION			
Operator	ANTERO RESOURCES CORPORATION	Well	Wable Unit 2H
Field	Tyler	API	47-095-02781-0000
Facility	Nalley Pad	Wellbore	Wable Unit 2H AWB
Slot	Slot #03		

TARGETS								
Name	TVD [ft]	North [ft]	East [ft]	Grid East [US ft]	Grid North [US ft]	Latitude	Longitude	Shape
Wable Unit 2H POE Rev-2	6087.00	-590.10	-1978.88	1651169.42	14359587.20	39°32'34.2376"N	80°57'42.6903"W	point
Wable Unit 2H LP Rev-2	6133.00	-823.07	-1898.78	1651249.48	14359354.32	39°32'31.9347"N	80°57'41.6692"W	point
Wable Unit 2H BHL Rev-3	6261.76	-14776.51	2898.31	1656044.65	14345406.49	39°30'14.0037"N	80°56'40.5465"W	point
Wable Unit 2H BHL Rev-2	6261.92	-14793.09	2904.02	1656050.35	14345389.91	39°30'13.8397"N	80°56'40.4738"W	point
Wable Unit 2H 50' L/R Hard Line	6500.00	-7691.60	462.57	1653609.89	14352488.55	39°31'24.0399"N	80°57'11.5734"W	rectangle
2D Rectangle 15018.9 x 100.								

WELLPATH COMPOSITION - Ref Wellbore: Wable Unit 2H AWB Ref Wellpath: Wable Unit 2H AWP Proj: 21687'					
Start MD [ft]	End MD [ft]	Positional Uncertainty Model	Log Name/Comment	Wellbore	Survey Date
30.00	291.00	Gyrodatta 2015 - GC+WIR+DPIPE	01_Gyrodatta MS Gyro <17-1/2"> (100'-291')	Wable Unit 2H AWB	4/22/2022
291.00	2564.00	BH NaviTrak (2019) (Axial Corr+HRGM)	02_APS EM <12-1/4"> (291')(419'-2564')	Wable Unit 2H AWB	4/22/2022
2564.00	5684.00	BH NaviTrak (2019) (Axial Corr+HRGM)	03_APS EM <8-3/4"> (2564')(2657'-5684')	Wable Unit 2H AWB	5/22/2022
5684.00	21687.00	BH AutoTrak Curve/eXpress (2019) (HRGM, Short spacing)	04_BH AT Curve <8-1/2"> (5684')(5735'-21662')	Wable Unit 2H AWB	5/22/2022

RECEIVED
 Office of Oil and Gas
 JAN 23 2023
 WV Department of
 Environmental Protection



Actual Wellpath Report

Wable Unit 2H AWP Proj: 21687'

Page 12 of 12



REFERENCE WELLPATH IDENTIFICATION

Operator	ANTERO RESOURCES CORPORATION	Well	Wable Unit 2H
Field	Tyler	API	47-095-02781-0000
Facility	Nalley Pad	Wellbore	Wable Unit 2H AWB
Slot	Slot #03		

COMMENTS

Wellpath general comments

API: 47-095-02781-0000

BH Job #: 111286230

Rig: H&P 519

Duration: 5/25/2022-5/29/2022

Gyrodatta MS Gyro <17-1/2"> (100'-291')

APS EM <12-1/4"> (291')(419'-2564')

APS EM <8-3/4"> (2564')(2657'-5684')

BH AT Curve <8-1/2"> (5684')(5735'-21662')

Sycamore: 6373' MD

Middlesex: 6528' MD

Burkett: 6675' MD

Marcellus POE: 6733' MD

Projected MD at TD: 21687'