



# ANTERO RESOURCES CORPORATION



Location: Tyler County, WV  
Field: Tyler  
Facility: Eldon Pad

Slot: Slot J  
Well: Phaeton Unit 1H  
Wellbore: Phaeton Unit 1H PWB

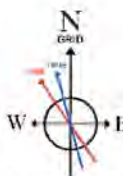
Easting (ft)

Scale 1 inch = 3000

Wellbore: Phaeton Unit 1H PWB Rev-B.0	Grid System: NAD27 / UTM Zone 17 North, US Feet
True vertical depths are referenced to H&P 519 (RKB)	North Reference: Grid north
Reference wellbore measured depths are referenced to H&P 519 (RKB)	Scale: True distance
H&P 519 (RKB) to Mean Sea Level: 910 feet	Coordinates are in feet referenced to GDA
Mean Sea Level to Ground level (At Slot: Slot J) = -880 feet	Depths are in feet
Offset wellbore MDs are referenced to each path's defined MD datum	Created by: redsayer on 2022-09-06; Database: WA_MPL_EASTERNUS_Delta

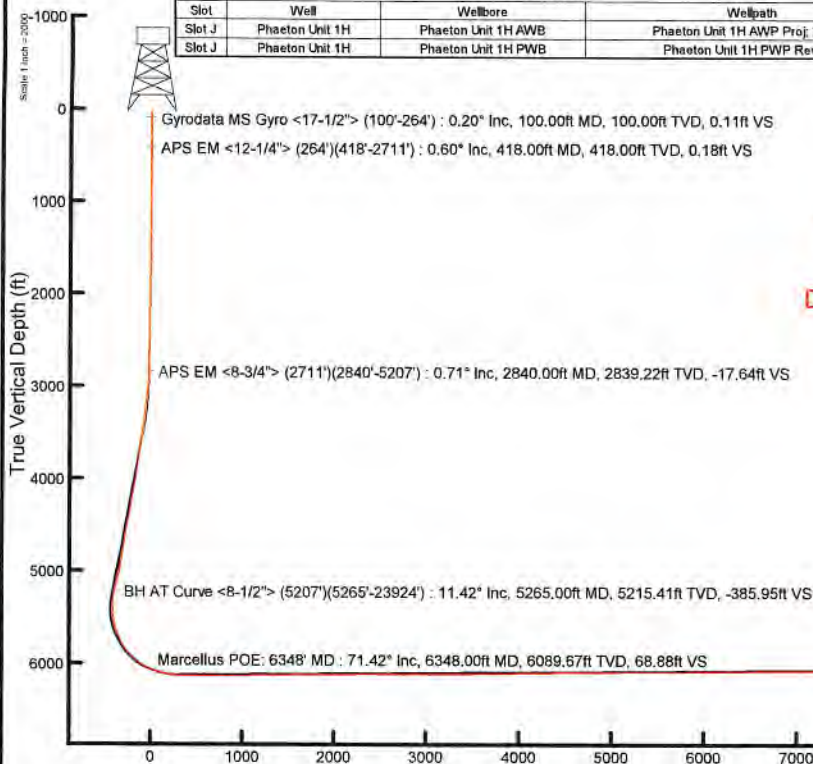
Location Information				
Facility Name	Grid East (US ft)	Grid North (US ft)	Latitude	Longitude
Eldon Pad	1652348.400	14341593.070	39°29'36.3190"N	80°57'27.7430"W
Slot	Local N (ft)	Local E (ft)	Grid East (US ft)	Grid North (US ft)
Slot J	61.02	475.79	1652824.000	14341654.070
			39°29'36.9198"N	80°57'21.6737"W
Comment: Phaeton Unit 1H				
H&P 519 (RKB) to Ground level (At Slot: Slot J)	30ft			
Mean Sea Level to Ground level (At Slot: Slot J)	-880ft			
H&P 519 (RKB) to Mean Sea Level	910ft			

Well Profile Data								
Design Comment	MD (ft)	Inc (")	Az (°)	TVD (ft)	Local N (ft)	Local E (ft)	DLS (°/100ft)	VS (ft)
Tie On	2711.00	1.070	120.040	2710.24	-25.68	-25.04	0.19	-16.15
Proj. to Bottom	2784.00	1.070	120.040	2783.23	-26.36	-23.86	0.00	-17.17
KOP 1	2864.00	1.070	120.040	2863.21	-27.11	-22.57	0.00	-18.30
End of 3D Arc	3496.09	12.877	195.070	3489.85	-98.36	-35.83	2.00	-81.38
Curve KOP	5332.50	12.877	195.070	5280.08	-493.53	-142.23	0.00	-420.56
POE	6337.24	69.575	341.035	6081.00	-87.54	-361.55	5.00	34.66
Landing Pt.	6598.80	90.500	341.035	6126.00	154.75	-444.80	8.00	290.87
BHL	24006.43	90.500	341.035	5974.09	16616.83	-6101.89	0.00	17897.84

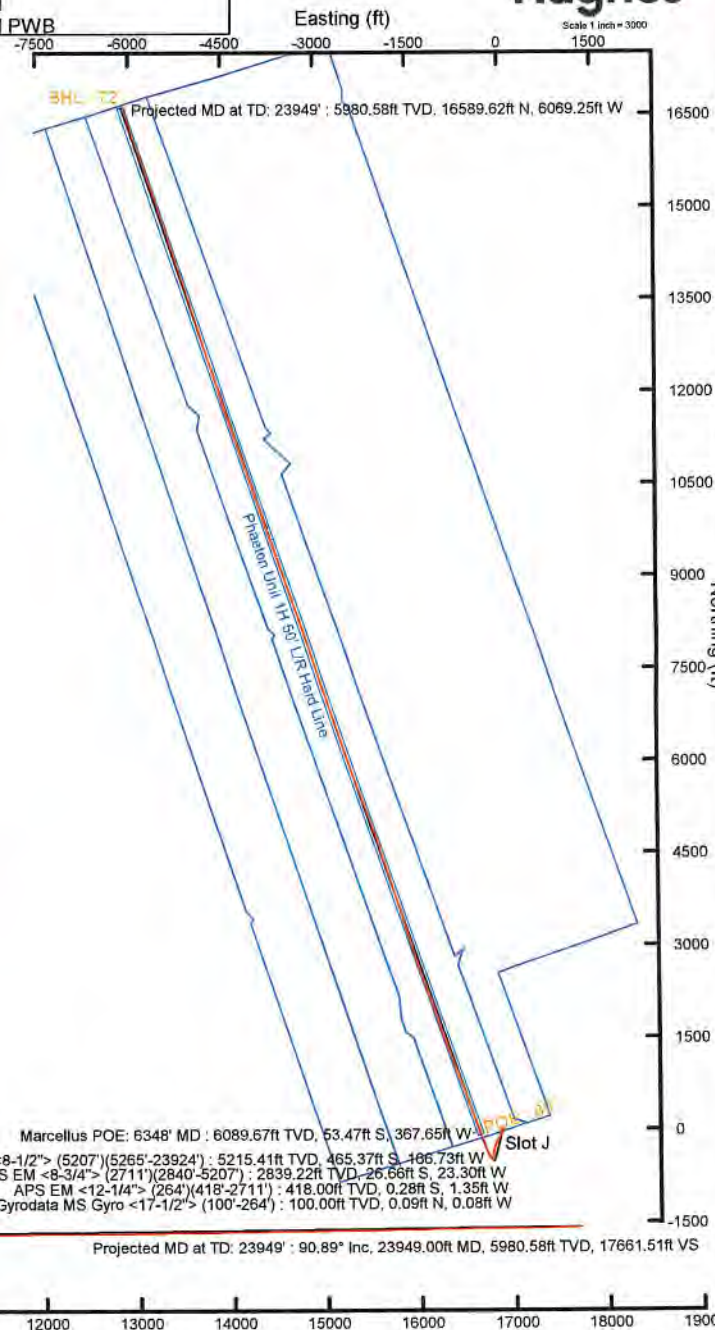


User specified (HDGM) Dip: 66.23° Field: 51408 nT  
Magnetic North is 7.44 degrees West of True North (at 7/25/2022)  
Grid North is 0.03 degrees East of True North  
To correct azimuth from True to Grid subtract 0.03 degrees  
To correct azimuth from Magnetic to Grid subtract 7.47 degrees

Well Data			
Slot	Well	Wellbore	Wellpath
Slot J	Phaeton Unit 1H	Phaeton Unit 1H AWB	Phaeton Unit 1H AWP Proj. 23949'
Slot J	Phaeton Unit 1H	Phaeton Unit 1H PWB	Phaeton Unit 1H PWP Rev-B.0



API: 47-095-02786-0000  
BH Job #: 111394536  
Rig: H&P 519  
Duration: 7/29/2022-8/3/2022



Vertical Section (ft)  
Azimuth 341.04° with reference 0.00 N, 0.00 E

Scale 1 inch = 2000



# Actual Wellpath Report

Phaeton Unit 1H AWP Proj: 23949'  
Page 1 of 13



REFERENCE WELLPATH IDENTIFICATION			
Operator	ANTERO RESOURCES CORPORATION	Well	Phaeton Unit 1H
Field	Tyler	API	47-095-02786-0000
Facility	Eldon Pad	Wellbore	Phaeton Unit 1H AWB
Slot	Slot J		

REPORT SETUP INFORMATION			
Projection System	NAD27 / UTM Zone 17 North, US feet	Software System	WellArchitect® 6.0
North Reference	Grid	User	Edsaryar
Scale	0.999600	Report Generated	9/6/2022 at 8:17:53 PM
Convergence at slot	0.03° East	Database	WA_MPL_EASTERNUS_Defn

WELLPATH LOCATION						
	Local coordinates		Grid coordinates		Geographic coordinates	
	North[ft]	East[ft]	Easting[US ft]	Northing[US ft]	Latitude	Longitude
Slot Location	61.02	475.79	1652824.00	14341654.07	39°29'36.9198"N	80°57'21.6737"W
Facility Reference Pt			1652348.40	14341593.07	39°29'36.3190"N	80°57'27.7430"W
Field Reference Pt			0.00	0.00	0°00'0.0000"	85°29'19.3013"W

WELLPATH DATUM			
Calculation method	Minimum curvature	H&P 519 (RKB) to Facility Vertical Datum	910.00ft
Horizontal Reference Pt	Slot	H&P 519 (RKB) to Mean Sea Level	910.00ft
Vertical Reference Pt	H&P 519 (RKB)	H&P 519 (RKB) to Ground Level at Slot (Slot J)	30.00ft
MD Reference Pt	H&P 519 (RKB)	Section Origin	N 0.00, E 0.00 ft
Field Vertical Reference	Mean Sea Level	Section Azimuth	341.04°





# Actual Wellpath Report

Phaeton Unit 1H AWP Proj: 23949'  
Page 2 of 13



REFERENCE WELLPATH IDENTIFICATION			
Operator	ANTERO RESOURCES CORPORATION	Well	Phaeton Unit 1H
Field	Tyler	API	47-095-02786-0000
Facility	Eldon Pad	Wellbore	Phaeton Unit 1H AWB
Slot	Slot J		

WELLPATH DATA (260 stations) † = interpolated, ‡ = extrapolated station																
MD [ft]	Inclination [°]	Azimuth [°]	TVD [ft]	Vert Sect [ft]	North [ft]	East [ft]	Grid East [US ft]	Grid North [US ft]	Latitude	Longitude	Closure Dist [ft]	Closure Dir [°]	DLS ["/100ft]	Build Rate ["/100ft]	Turn Rate ["/100ft]	Comments
0.00†	0.000	320.740	0.00	0.00	0.00	0.00	1652824.00	14341654.07	39°29'36.9198"N	80°57'21.6737"W	0.00	0.000	0.00	0.00	0.00	
30.00	0.000	320.740	30.00	0.00	0.00	0.00	1652824.00	14341654.07	39°29'36.9198"N	80°57'21.6737"W	0.00	0.000	0.00	0.00	0.00	
100.00	0.200	320.740	100.00	0.11	0.09	-0.08	1652823.92	14341654.16	39°29'36.9208"N	80°57'21.6747"W	0.12	320.740	0.29	0.29	0.00	Gyrodata MS Gyro <17-1/2"> (100'-264')
200.00	0.180	273.770	200.00	0.34	0.24	-0.34	1652823.66	14341654.31	39°29'36.9222"N	80°57'21.6781"W	0.42	304.870	0.15	-0.02	-46.97	
264.00	0.150	268.200	264.00	0.40	0.24	-0.53	1652823.47	14341654.31	39°29'36.9223"N	80°57'21.6804"W	0.58	294.783	0.05	-0.05	-8.70	
418.00	0.600	230.360	418.00	0.18	-0.28	-1.35	1652822.65	14341653.79	39°29'36.9171"N	80°57'21.6909"W	1.38	258.425	0.32	0.29	-24.57	APS EM <12-1/4"> (264')(418'-2711')
508.00	0.670	242.920	507.99	-0.06	-0.82	-2.18	1652821.82	14341653.25	39°29'36.9118"N	80°57'21.7015"W	2.33	249.479	0.17	0.08	13.96	
599.00	0.680	239.860	598.98	-0.24	-1.33	-3.12	1652820.88	14341652.74	39°29'36.9067"N	80°57'21.7135"W	3.39	246.929	0.04	0.01	-3.36	
690.00	0.710	240.020	689.98	-0.46	-1.88	-4.08	1652819.92	14341652.19	39°29'36.9012"N	80°57'21.7257"W	4.49	245.216	0.03	0.03	0.18	
780.00	0.720	244.900	779.97	-0.62	-2.40	-5.07	1652818.93	14341651.67	39°29'36.8961"N	80°57'21.7384"W	5.61	244.669	0.07	0.01	5.42	
870.00	0.970	253.700	869.96	-0.65	-2.86	-6.32	1652817.69	14341651.22	39°29'36.8916"N	80°57'21.7543"W	6.93	245.676	0.31	0.28	9.78	
960.00	1.090	256.460	959.95	-0.53	-3.27	-7.88	1652816.12	14341650.80	39°29'36.8876"N	80°57'21.7742"W	8.53	247.466	0.14	0.13	3.07	
1145.00	1.320	262.390	1144.90	0.05	-3.96	-11.70	1652812.30	14341650.11	39°29'36.8807"N	80°57'21.8230"W	12.36	251.289	0.14	0.12	3.21	
1239.00	1.510	256.530	1238.88	0.39	-4.40	-13.98	1652810.02	14341649.68	39°29'36.8765"N	80°57'21.8520"W	14.66	252.547	0.25	0.20	-6.23	
1334.00	1.850	249.870	1333.84	0.48	-5.16	-16.48	1652807.52	14341648.91	39°29'36.8689"N	80°57'21.8839"W	17.27	252.623	0.24	0.15	-7.01	
1428.00	1.790	250.950	1427.80	0.45	-6.10	-19.14	1652804.87	14341647.97	39°29'36.8596"N	80°57'21.9179"W	20.09	252.316	0.15	0.15	1.15	
1523.00	2.210	246.930	1522.74	0.31	-7.30	-22.23	1652801.78	14341646.77	39°29'36.8478"N	80°57'21.9572"W	23.40	251.808	0.47	0.44	-4.23	
1618.00	2.350	244.930	1617.66	-0.02	-8.85	-25.68	1652798.33	14341645.23	39°29'36.8325"N	80°57'22.0013"W	27.16	250.987	0.17	0.15	-2.11	
1712.00	3.020	243.710	1711.56	-0.55	-10.76	-29.64	1652794.37	14341643.31	39°29'36.8136"N	80°57'22.0519"W	31.54	250.048	0.72	0.71	-1.30	
1807.00	2.510	238.520	1806.45	-1.32	-12.96	-33.66	1652790.35	14341641.12	39°29'36.7920"N	80°57'22.1031"W	36.07	248.949	0.60	-0.54	-5.46	
1901.00	1.690	178.130	1900.40	-3.09	-15.42	-35.37	1652788.64	14341638.66	39°29'36.7676"N	80°57'22.1249"W	38.58	246.450	2.37	-0.87	-64.24	
1996.00	1.010	187.850	1995.37	-5.17	-17.65	-35.44	1652788.57	14341636.43	39°29'36.7456"N	80°57'22.1258"W	39.59	243.531	0.75	-0.72	10.23	
2090.00	1.310	128.800	2089.35	-6.82	-19.14	-34.72	1652789.30	14341634.94	39°29'36.7308"N	80°57'22.1166"W	39.64	241.130	1.25	0.32	-62.82	
2185.00	1.140	128.850	2184.33	-8.54	-20.41	-33.13	1652790.88	14341633.66	39°29'36.7182"N	80°57'22.0964"W	38.92	238.363	0.18	-0.18	0.05	
2279.00	0.530	138.800	2278.32	-9.73	-21.33	-32.12	1652791.89	14341632.75	39°29'36.7092"N	80°57'22.0835"W	38.55	236.416	0.66	-0.65	10.59	
2374.00	1.180	119.680	2373.31	-10.88	-22.14	-30.98	1652793.03	14341631.94	39°29'36.7012"N	80°57'22.0690"W	38.08	234.446	0.74	0.68	-20.13	
2469.00	1.210	122.710	2468.29	-12.40	-23.17	-29.29	1652794.73	14341630.91	39°29'36.6910"N	80°57'22.0474"W	37.34	231.652	0.07	0.03	3.19	
2563.00	1.170	120.020	2562.27	-13.90	-24.18	-27.62	1652796.39	14341629.89	39°29'36.6809"N	80°57'22.0261"W	36.71	228.793	0.07	-0.04	-2.86	
2658.00	1.170	120.130	2657.25	-15.36	-25.16	-25.94	1652798.07	14341628.92	39°29'36.6713"N	80°57'22.0047"W	36.14	225.879	0.00	0.00	0.12	
2711.00	1.070	120.040	2710.24	-16.15	-25.68	-25.04	1652798.97	14341628.40	39°29'36.6662"N	80°57'21.9933"W	35.87	224.286	0.19	-0.19	-0.17	





# Actual Wellpath Report

Phaeton Unit 1H AWP Proj: 23949'  
Page 3 of 13



REFERENCE WELLPATH IDENTIFICATION			
Operator	ANTERO RESOURCES CORPORATION	Well	Phaeton Unit 1H
Field	Tyler	API	47-095-02786-0000
Facility	Eldon Pad	Wellbore	Phaeton Unit 1H AWB
Slot	Slot J		

WELLPATH DATA (260 stations)																
MD [ft]	Inclination [°]	Azimuth [°]	TVD [ft]	Vert Sect [ft]	North [ft]	East [ft]	Grid East [US ft]	Grid North [US ft]	Latitude	Longitude	Closure Dist [ft]	Closure Dir [°]	DLS [°/100ft]	Build Rate [°/100ft]	Turn Rate [°/100ft]	Comments
2840.00	0.710	118.320	2839.22	-17.64	-26.66	-23.30	1652800.71	14341627.42	39°29'36.6565"N	80°57'21.9710"W	35.40	221.152	0.28	-0.28	-1.33	APS EM <8-3/4"> (2711')(2840'-5207')
2934.00	2.890	170.500	2933.18	-20.41	-29.27	-22.39	1652801.61	14341624.81	39°29'36.6306"N	80°57'21.9595"W	36.86	217.417	2.68	2.32	55.51	
3029.00	6.360	191.860	3027.86	-27.29	-36.79	-23.08	1652800.93	14341617.30	39°29'36.5564"N	80°57'21.9683"W	43.43	212.105	4.02	3.65	22.48	
3123.00	8.750	196.590	3121.04	-37.58	-48.74	-26.19	1652797.82	14341605.35	39°29'36.4383"N	80°57'22.0081"W	55.33	208.255	2.63	2.54	5.03	
3220.00	8.770	192.880	3216.90	-49.87	-63.02	-29.95	1652794.06	14341591.08	39°29'36.2972"N	80°57'22.0581"W	69.77	205.419	0.58	0.02	-3.82	
3315.00	8.960	208.930	3310.78	-60.98	-76.55	-35.14	1652788.87	14341577.55	39°29'36.1634"N	80°57'22.1224"W	84.23	204.658	2.60	0.20	16.89	
3409.00	11.360	205.420	3403.30	-72.51	-91.32	-42.66	1652781.36	14341562.78	39°29'36.0175"N	80°57'22.2184"W	100.79	205.038	2.64	2.55	-3.73	
3504.00	12.930	209.580	3496.18	-86.23	-109.02	-51.92	1652772.10	14341545.10	39°29'35.8426"N	80°57'22.3366"W	120.75	205.467	1.89	1.65	4.38	
3599.00	14.180	214.210	3588.53	-100.25	-127.89	-63.71	1652760.31	14341526.24	39°29'35.6562"N	80°57'22.4871"W	142.88	206.482	1.74	1.32	4.87	
3694.00	14.070	210.950	3680.66	-114.66	-147.41	-76.19	1652747.84	14341506.72	39°29'35.4633"N	80°57'22.6465"W	165.94	207.333	0.85	-0.12	-3.43	
3788.00	12.390	208.780	3772.16	-128.80	-166.05	-86.92	1652737.11	14341488.09	39°29'35.2791"N	80°57'22.7835"W	187.43	207.631	1.86	-1.79	-2.31	
3882.00	10.840	204.110	3864.24	-142.04	-182.96	-95.39	1652728.65	14341471.18	39°29'35.1120"N	80°57'22.8916"W	206.33	207.536	1.93	-1.65	-4.97	
3977.00	11.660	202.570	3957.41	-155.75	-199.98	-102.72	1652721.32	14341454.17	39°29'34.9439"N	80°57'22.9852"W	224.82	207.189	0.92	0.86	-1.62	
4072.00	14.640	204.380	4049.91	-171.67	-219.78	-111.37	1652712.68	14341434.38	39°29'34.7482"N	80°57'23.0956"W	246.39	206.872	3.17	3.14	1.91	
4166.00	14.010	201.700	4140.99	-188.95	-241.17	-120.48	1652703.57	14341412.99	39°29'34.5368"N	80°57'23.2119"W	269.59	206.544	0.97	-0.67	-2.85	
4261.00	11.510	198.340	4233.64	-205.21	-260.86	-127.71	1652696.34	14341393.32	39°29'34.3423"N	80°57'23.3043"W	290.44	206.086	2.74	-2.63	-3.54	
4355.00	11.900	194.460	4325.68	-220.76	-279.15	-133.08	1652690.97	14341375.04	39°29'34.1616"N	80°57'23.3730"W	309.25	205.490	0.93	0.41	-4.13	
4450.00	12.940	197.970	4418.46	-237.44	-298.75	-138.81	1652685.24	14341355.44	39°29'33.9679"N	80°57'23.4461"W	329.42	204.922	1.35	1.09	3.69	
4545.00	12.910	197.690	4511.05	-254.46	-318.98	-145.32	1652678.74	14341335.22	39°29'33.7680"N	80°57'23.5292"W	350.52	204.493	0.07	-0.03	-0.29	
4639.00	11.300	193.340	4602.96	-270.67	-337.94	-150.63	1652673.43	14341316.26	39°29'33.5805"N	80°57'23.5972"W	370.00	204.024	1.97	-1.71	-4.63	
4734.00	9.810	187.560	4696.35	-285.78	-355.02	-153.85	1652670.21	14341299.19	39°29'33.4117"N	80°57'23.6383"W	386.93	203.429	1.92	-1.57	-6.08	
4828.00	10.090	186.730	4788.94	-300.36	-371.14	-155.87	1652668.20	14341283.08	39°29'33.2525"N	80°57'23.6641"W	402.54	202.781	0.33	0.30	-0.88	
4923.00	11.780	189.190	4882.21	-316.41	-388.98	-158.39	1652665.67	14341265.25	39°29'33.0762"N	80°57'23.6964"W	419.99	202.156	1.85	1.78	2.59	
5018.00	13.580	188.440	4974.89	-334.87	-409.59	-161.58	1652662.49	14341244.65	39°29'32.8725"N	80°57'23.7372"W	440.30	201.528	1.90	1.89	-0.79	
5113.00	13.870	188.200	5067.18	-354.90	-431.89	-164.84	1652659.23	14341222.35	39°29'32.6521"N	80°57'23.7789"W	462.28	200.890	0.31	0.31	-0.25	
5207.00	12.610	181.320	5158.68	-374.55	-453.30	-166.68	1652657.39	14341200.95	39°29'32.4405"N	80°57'23.8026"W	482.97	200.189	2.14	-1.34	-7.32	
5265.00	11.420	179.060	5215.41	-385.95	-465.37	-166.73	1652657.34	14341188.88	39°29'32.3212"N	80°57'23.8033"W	494.34	199.711	2.21	-2.05	-3.90	BH AT Curve <8-1/2"> (5207')(5265'-23924')
5324.00	9.730	193.300	5273.42	-395.72	-476.07	-167.78	1652656.28	14341178.19	39°29'32.2155"N	80°57'23.8168"W	504.77	199.414	5.25	-2.86	24.14	
5418.00	6.760	260.060	5366.62	-401.59	-484.77	-175.08	1652648.99	14341169.49	39°29'32.1295"N	80°57'23.9098"W	515.42	199.857	9.98	-3.16	71.02	
5513.00	5.950	282.040	5461.05	-398.17	-484.71	-185.40	1652638.67	14341169.56	39°29'32.1302"N	80°57'24.0415"W	518.96	200.932	2.68	-0.85	23.14	





# Actual Wellpath Report

Phaeton Unit 1H AWP Proj: 23949'  
Page 4 of 13



REFERENCE WELLPATH IDENTIFICATION			
Operator	ANTERO RESOURCES CORPORATION	Well	Phaeton Unit 1H
Field	Tyler	API	47-095-02786-0000
Facility	Eldon Pad	Wellbore	Phaeton Unit 1H AWB
Slot	Slot J		

WELLPATH DATA (260 stations) † = interpolated, ‡ = extrapolated station																
MD [ft]	Inclination [°]	Azimuth [°]	TVD [ft]	Vert Sect [ft]	North [ft]	East [ft]	Grid East [US ft]	Grid North [US ft]	Latitude	Longitude	Closure Dist [ft]	Closure Dir [°]	DLS [°/100ft]	Build Rate [°/100ft]	Turn Rate [°/100ft]	Comments
5607.00	10.090	313.760	5554.16	-388.34	-477.99	-196.12	1652627.96	14341176.27	39°29'32.1966"N	80°57'24.1782"W	516.66	202.309	6.29	4.40	33.74	
5702.00	17.190	327.380	5646.44	-367.27	-460.39	-209.72	1652614.36	14341193.87	39°29'32.3707"N	80°57'24.3516"W	505.90	204.491	8.15	7.47	14.34	
5797.00	25.630	334.000	5734.82	-333.17	-430.04	-226.33	1652597.76	14341224.21	39°29'32.6707"N	80°57'24.5632"W	485.96	207.758	9.23	8.88	6.97	
5891.00	32.680	340.230	5816.86	-287.55	-387.82	-243.85	1652580.25	14341266.41	39°29'33.0881"N	80°57'24.7865"W	458.11	212.161	8.16	7.50	6.63	
5975.00†	41.310	340.140	5883.90	-237.06	-340.31	-260.97	1652563.13	14341313.90	39°29'33.5577"N	80°57'25.0046"W	428.86	217.483	10.27	10.27	-0.11	Sycamore: 5975' MD
5986.00	42.440	340.130	5892.09	-229.71	-333.41	-263.47	1652560.64	14341320.80	39°29'33.6259"N	80°57'25.0364"W	424.94	218.317	10.27	10.27	-0.09	
6080.00	49.460	339.300	5957.41	-162.22	-270.09	-286.90	1652537.21	14341384.09	39°29'34.2519"N	80°57'25.3349"W	394.03	226.729	7.49	7.47	-0.88	
6113.00†	52.005	339.371	5978.29	-136.68	-246.18	-295.92	1652528.20	14341407.99	39°29'34.4881"N	80°57'25.4498"W	384.93	230.242	7.71	7.71	0.21	Middlesex: 6113' MD
6174.00	56.710	339.490	6013.83	-87.14	-199.78	-313.33	1652510.80	14341454.37	39°29'34.9468"N	80°57'25.6716"W	371.60	237.478	7.71	7.71	0.20	
6269.00	64.780	339.540	6060.22	-4.36	-122.20	-342.31	1652481.83	14341531.91	39°29'35.7137"N	80°57'26.0407"W	363.47	250.353	8.49	8.49	0.05	
6275.00†	65.284	339.575	6062.75	1.08	-117.11	-344.21	1652479.93	14341537.01	39°29'35.7641"N	80°57'26.0649"W	363.58	251.211	8.42	8.40	0.58	Burkett: 6275' MD
6348.00†	71.416	339.976	6089.67	68.88	-53.47	-367.65	1652456.50	14341600.62	39°29'36.3931"N	80°57'26.3636"W	371.52	261.725	8.42	8.40	0.55	Marcellus POE: 6348' MD
6364.00	72.760	340.060	6094.59	84.11	-39.16	-372.85	1652451.30	14341614.92	39°29'36.5346"N	80°57'26.4298"W	374.90	264.004	8.42	8.40	0.52	
6459.00	77.620	339.740	6118.87	175.90	47.06	-404.41	1652419.76	14341701.11	39°29'37.3869"N	80°57'26.8318"W	407.14	276.638	5.13	5.12	-0.34	
6554.00	85.900	340.260	6132.47	269.82	135.33	-436.53	1652387.64	14341789.35	39°29'38.2595"N	80°57'27.2411"W	457.03	287.225	8.73	8.72	0.55	
6648.00	90.310	339.530	6135.58	363.73	223.54	-468.82	1652355.37	14341877.52	39°29'39.1313"N	80°57'27.6524"W	519.38	295.492	4.76	4.69	-0.78	
6743.00	90.150	339.330	6135.20	458.69	312.48	-502.20	1652322.01	14341966.42	39°29'40.0106"N	80°57'28.0776"W	591.48	301.891	0.27	-0.17	-0.21	
6837.00	90.090	340.380	6135.00	552.67	400.73	-534.57	1652289.65	14342054.64	39°29'40.8829"N	80°57'28.4900"W	668.09	306.856	1.12	-0.06	1.12	
6932.00	90.370	340.950	6134.62	647.67	490.37	-566.02	1652258.21	14342144.24	39°29'41.7690"N	80°57'28.8907"W	748.89	310.904	0.67	0.29	0.60	
7026.00	89.630	339.890	6134.62	741.66	578.93	-597.52	1652226.72	14342232.77	39°29'42.6444"N	80°57'29.2920"W	831.98	314.095	1.38	-0.79	-1.13	
7121.00	90.490	339.900	6134.52	836.64	668.14	-630.18	1652194.08	14342321.94	39°29'43.5263"N	80°57'29.7080"W	918.44	316.675	0.91	0.91	0.01	
7215.00	90.400	340.240	6133.79	930.62	756.51	-662.22	1652162.05	14342410.27	39°29'44.3998"N	80°57'30.1162"W	1005.40	318.802	0.37	-0.10	0.36	
7310.00	90.520	340.130	6133.03	1025.61	845.88	-694.42	1652129.86	14342499.61	39°29'45.2832"N	80°57'30.5264"W	1094.41	320.616	0.17	0.13	-0.12	
7405.00	90.460	338.790	6132.21	1120.57	934.84	-727.75	1652096.54	14342588.53	39°29'46.1626"N	80°57'30.9511"W	1184.71	322.100	1.41	-0.06	-1.41	
7500.00	90.220	339.160	6131.65	1215.50	1023.51	-761.83	1652062.47	14342677.17	39°29'47.0391"N	80°57'31.3853"W	1275.92	323.338	0.46	-0.25	0.39	
7594.00	90.800	339.080	6130.81	1309.45	1111.33	-795.34	1652028.98	14342764.96	39°29'47.9073"N	80°57'31.8121"W	1366.61	324.410	0.62	0.62	-0.09	
7688.00	92.250	341.230	6128.31	1403.40	1199.71	-827.23	1651997.10	14342853.30	39°29'48.7809"N	80°57'32.2185"W	1457.26	325.413	2.76	1.54	2.29	
7783.00	90.800	342.360	6125.78	1498.35	1289.92	-856.90	1651967.44	14342943.47	39°29'49.6726"N	80°57'32.5964"W	1548.60	326.404	1.93	-1.53	1.19	
7878.00	90.370	339.860	6124.81	1593.34	1379.79	-887.65	1651936.70	14343033.31	39°29'50.5609"N	80°57'32.9882"W	1640.66	327.246	2.67	-0.45	-2.63	
7973.00	91.020	340.550	6123.66	1688.32	1469.17	-919.82	1651904.55	14343122.65	39°29'51.4445"N	80°57'33.3981"W	1733.36	327.950	1.00	0.68	0.73	





# Actual Wellpath Report

Phaeton Unit 1H AWP Proj: 23949'  
Page 5 of 13



REFERENCE WELLPATH IDENTIFICATION			
Operator	ANTERO RESOURCES CORPORATION	Well	Phaeton Unit 1H
Field	Tyler	API	47-095-02786-0000
Facility	Eldon Pad	Wellbore	Phaeton Unit 1H AWB
Slot	Slot J		

WELLPATH DATA (260 stations)																
MD [ft]	Inclination [°]	Azimuth [°]	TVD [ft]	Vert Sect [ft]	North [ft]	East [ft]	Grid East [US ft]	Grid North [US ft]	Latitude	Longitude	Closure Dist [ft]	Closure Dir [°]	DLS ["/100ft]	Build Rate ["/100ft]	Turn Rate ["/100ft]	Comments
8067.00	89.820	338.960	6122.97	1782.29	1557.36	-952.35	1651872.04	14343210.80	39°29'52.3162"N	80°57'33.8124"W	1825.46	328.554	2.12	-1.28	-1.69	
8162.00	90.830	340.760	6122.43	1877.26	1646.54	-985.05	1651839.34	14343299.95	39°29'53.1978"N	80°57'34.2292"W	1918.70	329.110	2.17	1.06	1.89	
8257.00	90.710	341.720	6121.16	1972.25	1736.48	-1015.60	1651808.80	14343389.86	39°29'54.0869"N	80°57'34.6184"W	2011.67	329.678	1.02	-0.13	1.01	
8351.00	90.430	340.960	6120.22	2066.24	1825.54	-1045.68	1651778.74	14343478.87	39°29'54.9671"N	80°57'35.0015"W	2103.81	330.196	0.86	-0.30	-0.81	
8446.00	90.180	340.430	6119.72	2161.24	1915.19	-1077.08	1651747.35	14343568.50	39°29'55.8534"N	80°57'35.4016"W	2197.29	330.647	0.62	-0.26	-0.56	
8541.00	90.950	340.840	6118.78	2256.23	2004.81	-1108.58	1651715.86	14343658.08	39°29'56.7393"N	80°57'35.8029"W	2290.90	331.059	0.92	0.81	0.43	
8635.00	90.120	340.770	6117.90	2350.23	2093.58	-1139.49	1651684.97	14343746.81	39°29'57.6167"N	80°57'36.1966"W	2383.59	331.442	0.89	-0.88	-0.07	
8730.00	90.740	340.310	6117.19	2445.22	2183.15	-1171.13	1651653.34	14343836.35	39°29'58.5021"N	80°57'36.5998"W	2477.44	331.789	0.81	0.65	-0.48	
8825.00	89.260	341.320	6117.19	2540.21	2272.87	-1202.35	1651622.13	14343926.03	39°29'59.3890"N	80°57'36.9976"W	2571.30	332.121	1.89	-1.56	1.06	
8920.00	90.580	339.800	6117.32	2635.21	2362.45	-1233.97	1651590.53	14344015.57	39°30'0.2745"N	80°57'37.4004"W	2665.31	332.421	2.12	1.39	-1.60	
9014.00	90.150	339.530	6116.72	2729.18	2450.59	-1266.63	1651557.88	14344103.68	39°30'1.1457"N	80°57'37.8166"W	2758.58	332.667	0.54	-0.46	-0.29	
9109.00	90.520	341.240	6116.17	2824.17	2540.08	-1298.52	1651526.00	14344193.12	39°30'2.0303"N	80°57'38.2229"W	2852.74	332.923	1.84	0.39	1.80	
9204.00	89.450	341.490	6116.19	2919.16	2630.09	-1328.88	1651495.66	14344283.11	39°30'2.9201"N	80°57'38.6097"W	2946.75	333.194	1.16	-1.13	0.26	
9298.00	88.000	340.900	6118.28	3013.14	2719.05	-1359.17	1651465.38	14344372.03	39°30'3.7994"N	80°57'38.9956"W	3039.83	333.441	1.67	-1.54	-0.63	
9393.00	92.400	343.850	6117.95	3108.08	2809.56	-1387.93	1651436.63	14344462.50	39°30'4.6941"N	80°57'39.3619"W	3133.68	333.711	5.58	4.63	3.11	
9488.00	90.060	342.670	6115.91	3202.97	2900.50	-1415.28	1651409.29	14344553.41	39°30'5.5930"N	80°57'39.7104"W	3227.37	333.990	2.76	-2.46	-1.24	
9582.00	90.180	342.330	6115.72	3296.94	2990.15	-1443.55	1651381.03	14344643.02	39°30'6.4792"N	80°57'40.0705"W	3320.37	334.230	0.38	0.13	-0.36	
9677.00	91.390	343.950	6114.41	3391.87	3081.06	-1471.10	1651353.50	14344733.89	39°30'7.3777"N	80°57'40.4214"W	3414.24	334.477	2.13	1.27	1.71	
9772.00	90.770	342.440	6112.62	3486.78	3171.98	-1498.56	1651326.05	14344824.78	39°30'8.2765"N	80°57'40.7712"W	3508.15	334.712	1.72	-0.65	-1.59	
9866.00	90.770	342.650	6111.36	3580.74	3261.64	-1526.75	1651297.86	14344914.40	39°30'9.1628"N	80°57'41.1304"W	3601.29	334.916	0.22	0.00	0.22	
9961.00	90.770	342.240	6110.08	3675.70	3352.21	-1555.40	1651269.22	14345004.93	39°30'10.0580"N	80°57'41.4954"W	3695.48	335.109	0.43	0.00	-0.43	
10056.00	89.820	342.240	6109.59	3770.68	3442.68	-1584.38	1651240.26	14345095.37	39°30'10.9523"N	80°57'41.8646"W	3789.76	335.287	1.00	-1.00	0.00	
10151.00	90.830	342.410	6109.06	3865.65	3533.19	-1613.22	1651211.43	14345185.84	39°30'11.8470"N	80°57'42.2321"W	3884.06	335.459	1.08	1.06	0.18	
10246.00	92.650	343.120	6106.17	3960.56	3623.88	-1641.35	1651183.31	14345276.50	39°30'12.7434"N	80°57'42.5905"W	3978.26	335.633	2.06	1.92	0.75	
10340.00	91.420	343.240	6102.83	4054.43	3713.80	-1668.54	1651156.13	14345366.38	39°30'13.6322"N	80°57'42.9368"W	4071.40	335.807	1.31	-1.31	0.13	
10434.00	90.000	342.330	6101.67	4148.38	3803.58	-1696.35	1651128.33	14345456.12	39°30'14.5196"N	80°57'43.2912"W	4164.71	335.964	1.79	-1.51	-0.97	
10529.00	91.110	343.250	6100.75	4243.33	3894.32	-1724.46	1651100.23	14345546.83	39°30'15.4166"N	80°57'43.6493"W	4259.05	336.116	1.52	1.17	0.97	
10624.00	90.580	341.510	6099.35	4338.29	3984.85	-1753.21	1651071.49	14345637.32	39°30'16.3114"N	80°57'44.0156"W	4353.48	336.252	1.91	-0.56	-1.83	
10719.00	90.280	341.050	6098.63	4433.28	4074.82	-1783.70	1651041.02	14345727.25	39°30'17.2008"N	80°57'44.4041"W	4448.12	336.359	0.58	-0.32	-0.48	
10813.00	90.280	342.200	6098.17	4527.28	4164.03	-1813.33	1651011.40	14345816.42	39°30'18.0825"N	80°57'44.7816"W	4541.73	336.468	1.22	0.00	1.22	





# Actual Wellpath Report

Phaeton Unit 1H AWP Proj: 23949'  
Page 6 of 13


**REFERENCE WELLPATH IDENTIFICATION**

Operator	ANTERO RESOURCES CORPORATION	Well	Phaeton Unit 1H
Field	Tyler	API	47-095-02786-0000
Facility	Eldon Pad	Wellbore	Phaeton Unit 1H AWB
Slot	Slot J		

**WELLPATH DATA (260 stations)**

MD [ft]	Inclination [°]	Azimuth [°]	TVD [ft]	Vert Sect [ft]	North [ft]	East [ft]	Grid East [US ft]	Grid North [US ft]	Latitude	Longitude	Closure Dist [ft]	Closure Dir [°]	DLS [°/100ft]	Build Rate [°/100ft]	Turn Rate [°/100ft]	Comments
10908.00	91.420	342.000	6096.77	4622.25	4254.42	-1842.53	1650982.21	14345906.78	39°30'18.9760"N	80°57'45.1536"W	4636.27	336.583	1.22	1.20	-0.21	
11002.00	90.400	342.140	6095.27	4716.22	4343.84	-1871.46	1650953.29	14345996.16	39°30'19.8599"N	80°57'45.5223"W	4729.83	336.692	1.10	-1.09	0.15	
11097.00	90.090	342.130	6094.87	4811.20	4434.26	-1900.61	1650924.16	14346086.54	39°30'20.7537"N	80°57'45.8936"W	4824.41	336.799	0.33	-0.33	-0.01	
11192.00	90.680	342.610	6094.23	4906.17	4524.79	-1929.38	1650895.40	14346177.04	39°30'21.6486"N	80°57'46.2602"W	4918.97	336.907	0.80	0.62	0.51	
11287.00	90.310	342.430	6093.41	5001.14	4615.40	-1957.91	1650866.88	14346267.62	39°30'22.5442"N	80°57'46.6237"W	5013.52	337.013	0.43	-0.39	-0.19	
11381.00	90.710	341.950	6092.57	5095.11	4704.89	-1986.66	1650838.14	14346357.07	39°30'23.4288"N	80°57'46.9901"W	5107.14	337.108	0.66	0.43	-0.51	
11476.00	90.120	341.640	6091.88	5190.10	4795.13	-2016.34	1650808.47	14346447.28	39°30'24.3208"N	80°57'47.3682"W	5201.82	337.193	0.70	-0.62	-0.33	
11570.00	90.490	341.000	6091.38	5284.10	4884.18	-2046.45	1650778.38	14346536.29	39°30'25.2010"N	80°57'47.7519"W	5295.58	337.267	0.79	0.39	-0.68	
11665.00	90.340	339.990	6090.69	5379.09	4973.73	-2078.16	1650746.67	14346625.80	39°30'26.0861"N	80°57'48.1560"W	5390.43	337.323	1.07	-0.16	-1.06	
11759.00	90.250	339.430	6090.21	5473.06	5061.89	-2110.76	1650714.09	14346713.93	39°30'26.9576"N	80°57'48.5715"W	5484.35	337.364	0.60	-0.10	-0.60	
11854.00	90.800	339.520	6089.34	5568.02	5150.86	-2144.07	1650680.79	14346802.86	39°30'27.8371"N	80°57'48.9959"W	5579.28	337.400	0.59	0.58	0.09	
11949.00	91.170	340.520	6087.71	5662.99	5240.12	-2176.52	1650648.35	14346892.09	39°30'28.7194"N	80°57'49.4095"W	5674.16	337.444	1.12	0.39	1.05	
12043.00	90.650	340.040	6086.21	5756.97	5328.60	-2208.24	1650616.65	14346980.53	39°30'29.5940"N	80°57'49.8137"W	5768.04	337.490	0.75	-0.55	-0.51	
12138.00	90.830	339.970	6084.99	5851.95	5417.87	-2240.72	1650584.18	14347069.76	39°30'30.4764"N	80°57'50.2277"W	5862.94	337.531	0.20	0.19	-0.07	
12232.00	90.370	339.630	6084.00	5945.92	5506.08	-2273.17	1650551.74	14347157.94	39°30'31.3484"N	80°57'50.6413"W	5956.86	337.567	0.61	-0.49	-0.36	
12327.00	90.460	340.040	6083.31	6040.90	5595.25	-2305.92	1650519.01	14347247.07	39°30'32.2298"N	80°57'51.0586"W	6051.79	337.602	0.44	0.09	0.43	
12421.00	90.490	339.430	6082.53	6134.87	5683.43	-2338.48	1650486.46	14347335.22	39°30'33.1014"N	80°57'51.4736"W	6145.72	337.635	0.65	0.03	-0.65	
12516.00	90.580	339.830	6081.65	6229.84	5772.49	-2371.54	1650453.41	14347424.24	39°30'33.9817"N	80°57'51.8950"W	6240.66	337.665	0.43	0.09	0.42	
12611.00	90.280	340.490	6080.93	6324.82	5861.84	-2403.79	1650421.18	14347513.56	39°30'34.8650"N	80°57'52.3059"W	6335.57	337.703	0.76	-0.32	0.69	
12705.00	90.340	340.770	6080.43	6418.82	5950.52	-2434.96	1650390.02	14347602.20	39°30'35.7416"N	80°57'52.7032"W	6429.44	337.746	0.30	0.06	0.30	
12800.00	90.770	341.640	6079.51	6513.81	6040.45	-2465.57	1650359.42	14347692.09	39°30'36.6305"N	80°57'53.0932"W	6524.27	337.796	1.02	0.45	0.92	
12894.00	90.770	341.830	6078.24	6607.80	6129.71	-2495.03	1650329.98	14347781.31	39°30'37.5128"N	80°57'53.4686"W	6618.04	337.852	0.20	0.00	0.20	
12989.00	90.430	340.700	6077.25	6702.79	6219.67	-2525.54	1650299.48	14347871.24	39°30'38.4020"N	80°57'53.8575"W	6712.87	337.900	1.24	-0.36	-1.19	
13084.00	91.080	341.420	6076.00	6797.78	6309.51	-2556.37	1650268.66	14347961.05	39°30'39.2901"N	80°57'54.2504"W	6807.72	337.944	1.02	0.68	0.76	
13179.00	90.650	341.030	6074.56	6892.77	6399.45	-2586.94	1650238.10	14348050.95	39°30'40.1791"N	80°57'54.6400"W	6902.55	337.989	0.61	-0.45	-0.41	
13274.00	90.340	340.750	6073.74	6987.76	6489.21	-2618.04	1650207.01	14348140.67	39°30'41.0663"N	80°57'55.0364"W	6997.43	338.029	0.44	-0.33	-0.29	
13368.00	90.340	340.820	6073.18	7081.76	6577.97	-2648.98	1650176.09	14348229.40	39°30'41.9437"N	80°57'55.4307"W	7091.32	338.065	0.07	0.00	0.07	
13463.00	90.620	340.550	6072.39	7176.76	6667.62	-2680.40	1650144.68	14348319.01	39°30'42.8299"N	80°57'55.8311"W	7186.22	338.100	0.41	0.29	-0.28	
13557.00	91.020	341.330	6071.04	7270.75	6756.46	-2711.09	1650114.00	14348407.81	39°30'43.7080"N	80°57'56.2223"W	7280.09	338.136	0.93	0.43	0.83	
13652.00	90.030	340.300	6070.17	7365.74	6846.18	-2742.31	1650082.79	14348497.49	39°30'44.5948"N	80°57'56.6202"W	7374.98	338.171	1.50	-1.04	-1.08	





# Actual Wellpath Report

Phaeton Unit 1H AWP Proj: 23949'  
Page 7 of 13



REFERENCE WELLPATH IDENTIFICATION				
Operator	ANTERO RESOURCES CORPORATION		Well	Phaeton Unit 1H
Field	Tyler		API	47-095-02786-0000
Facility	Eldon Pad		Wellbore	Phaeton Unit 1H AWB
Slot	Slot J			

WELLPATH DATA (260 stations)																
MD [ft]	Inclination [°]	Azimuth [°]	TVD [ft]	Vert Sect [ft]	North [ft]	East [ft]	Grid East [US ft]	Grid North [US ft]	Latitude	Longitude	Closure Dist [ft]	Closure Dir [°]	DLS [°/100ft]	Build Rate [°/100ft]	Turn Rate [°/100ft]	Comments
13746.00	90.620	340.670	6069.64	7459.73	6934.77	-2773.71	1650051.41	14348586.06	39°30'45.4706"N	80°57'57.0204"W	7468.91	338.200	0.74	0.63	0.39	
13841.00	90.400	341.110	6068.79	7554.73	7024.53	-2804.81	1650020.32	14348675.78	39°30'46.3578"N	80°57'57.4167"W	7563.80	338.234	0.52	-0.23	0.46	
13935.00	90.710	340.430	6067.88	7648.72	7113.29	-2835.77	1649989.37	14348764.50	39°30'47.2351"N	80°57'57.8113"W	7657.70	338.265	0.79	0.33	-0.72	
14030.00	90.710	340.750	6066.71	7743.71	7202.88	-2867.34	1649957.82	14348854.05	39°30'48.1207"N	80°57'58.2137"W	7752.62	338.293	0.34	0.00	0.34	
14124.00	90.180	341.110	6065.98	7837.71	7291.72	-2898.05	1649927.12	14348942.86	39°30'48.9988"N	80°57'58.6051"W	7846.52	338.325	0.68	-0.56	0.38	
14219.00	90.550	341.130	6065.37	7932.71	7381.60	-2928.79	1649896.39	14349032.71	39°30'49.8873"N	80°57'58.9969"W	7941.40	338.358	0.39	0.39	0.02	
14313.00	91.080	341.620	6064.03	8026.69	7470.67	-2958.80	1649866.38	14349121.74	39°30'50.7677"N	80°57'59.3795"W	8035.26	338.394	0.77	0.56	0.52	
14408.00	90.740	341.920	6062.52	8121.67	7560.89	-2988.52	1649836.68	14349211.92	39°30'51.6595"N	80°57'59.7582"W	8130.09	338.433	0.48	-0.36	0.32	
14502.00	90.250	340.510	6061.71	8215.67	7649.88	-3018.79	1649806.43	14349300.87	39°30'52.5391"N	80°58'0.1440"W	8223.97	338.465	1.59	-0.52	-1.50	
14597.00	90.370	340.080	6061.20	8310.66	7739.31	-3050.82	1649774.41	14349390.27	39°30'53.4231"N	80°58'0.5522"W	8318.92	338.486	0.47	0.13	-0.45	
14692.00	90.250	339.910	6060.68	8405.64	7828.58	-3083.32	1649741.92	14349479.50	39°30'54.3055"N	80°58'0.9665"W	8413.89	338.503	0.22	-0.13	-0.18	
14787.00	90.030	340.970	6060.45	8500.63	7918.10	-3115.12	1649710.13	14349568.99	39°30'55.1903"N	80°58'1.3719"W	8508.83	338.524	1.14	-0.23	1.12	
14881.00	90.340	341.390	6060.15	8594.63	8007.07	-3145.45	1649679.82	14349657.92	39°30'56.0698"N	80°58'1.7584"W	8602.73	338.553	0.56	0.33	0.45	
14976.00	90.710	341.690	6059.28	8689.62	8097.18	-3175.53	1649649.75	14349747.99	39°30'56.9605"N	80°58'2.1418"W	8697.60	338.586	0.50	0.39	0.32	
15071.00	90.460	341.270	6058.31	8784.62	8187.25	-3205.70	1649619.59	14349838.03	39°30'57.8508"N	80°58'2.5264"W	8792.48	338.617	0.51	-0.26	-0.44	
15166.00	90.430	341.040	6057.57	8879.61	8277.16	-3236.38	1649588.92	14349927.90	39°30'58.7395"N	80°58'2.9175"W	8887.38	338.644	0.24	-0.03	-0.24	
15260.00	90.460	340.780	6056.84	8973.61	8365.99	-3267.13	1649558.19	14350016.69	39°30'59.6175"N	80°58'3.3093"W	8981.30	338.668	0.28	0.03	-0.28	
15355.00	90.400	340.560	6056.13	9068.61	8455.63	-3298.57	1649526.75	14350106.30	39°31'0.5036"N	80°58'3.7102"W	9076.24	338.689	0.24	-0.06	-0.23	
15449.00	90.340	340.950	6055.52	9162.60	8544.37	-3329.55	1649495.78	14350195.01	39°31'1.3808"N	80°58'4.1051"W	9170.18	338.710	0.42	-0.06	0.41	
15544.00	90.280	340.770	6055.01	9257.60	8634.12	-3360.70	1649464.65	14350284.72	39°31'2.2679"N	80°58'4.5021"W	9265.11	338.732	0.20	-0.06	-0.19	
15639.00	90.950	341.650	6053.99	9352.59	8724.05	-3391.30	1649434.06	14350374.62	39°31'3.1568"N	80°58'4.8921"W	9360.02	338.757	1.16	0.71	0.93	
15733.00	90.090	340.700	6053.13	9446.59	8813.02	-3421.63	1649403.75	14350463.55	39°31'4.0362"N	80°58'5.2787"W	9453.93	338.781	1.36	-0.91	-1.01	
15828.00	90.280	340.900	6052.83	9541.59	8902.73	-3452.87	1649372.52	14350553.22	39°31'4.9230"N	80°58'5.6770"W	9548.87	338.802	0.29	0.20	0.21	
15923.00	89.970	340.860	6052.62	9636.58	8992.49	-3483.99	1649341.41	14350642.95	39°31'5.8102"N	80°58'6.0736"W	9643.81	338.822	0.33	-0.33	-0.04	
16017.00	89.970	340.690	6052.67	9730.58	9081.25	-3514.94	1649310.47	14350731.67	39°31'6.6876"N	80°58'6.4682"W	9737.76	338.841	0.18	0.00	-0.18	
16112.00	89.910	341.040	6052.77	9825.58	9171.00	-3546.08	1649279.34	14350821.38	39°31'7.5747"N	80°58'6.8652"W	9832.70	338.860	0.37	-0.06	0.37	
16207.00	89.940	340.860	6052.89	9920.58	9260.80	-3577.09	1649248.35	14350911.15	39°31'8.4623"N	80°58'7.2604"W	9927.63	338.880	0.19	0.03	-0.19	
16301.00	89.780	340.410	6053.12	10014.58	9349.48	-3608.26	1649217.19	14350999.79	39°31'9.3389"N	80°58'7.6577"W	10021.59	338.897	0.51	-0.17	-0.48	
16396.00	89.880	340.740	6053.40	10109.58	9439.07	-3639.85	1649185.61	14351089.35	39°31'10.2245"N	80°58'8.0605"W	10116.55	338.913	0.36	0.11	0.35	
16491.00	90.060	340.890	6053.45	10204.58	9528.79	-3671.07	1649154.40	14351179.04	39°31'11.1113"N	80°58'8.4585"W	10211.50	338.930	0.25	0.19	0.16	





# Actual Wellpath Report

Phaeton Unit 1H AWP Proj: 23949'  
Page 8 of 13



REFERENCE WELLPATH IDENTIFICATION			
Operator	ANTERO RESOURCES CORPORATION	Well	Phaeton Unit 1H
Field	Tyler	API	47-095-02786-0000
Facility	Eldon Pad	Wellbore	Phaeton Unit 1H AWB
Slot	Slot J		

WELLPATH DATA (260 stations)																
MD [ft]	Inclination [°]	Azimuth [°]	TVD [ft]	Vert Sect [ft]	North [ft]	East [ft]	Grid East [US ft]	Grid North [US ft]	Latitude	Longitude	Closure Dist [ft]	Closure Dir [°]	DLS [°/100ft]	Build Rate [°/100ft]	Turn Rate [°/100ft]	Comments
16585.00	90.030	340.540	6053.38	10298.57	9617.52	-3702.12	1649123.37	14351267.72	39°31'11.9883"N	80°58'8.8542"W	10305.45	338.947	0.37	-0.03	-0.37	
16680.00	90.090	340.380	6053.28	10393.57	9707.05	-3733.89	1649091.61	14351357.22	39°31'12.8733"N	80°58'9.2593"W	10400.42	338.960	0.18	0.06	-0.17	
16775.00	89.720	339.740	6053.44	10488.55	9796.35	-3766.29	1649059.23	14351446.49	39°31'13.7560"N	80°58'9.6723"W	10495.40	338.970	0.78	-0.39	-0.67	
16870.00	90.370	341.630	6053.36	10583.55	9886.00	-3797.71	1649027.82	14351536.10	39°31'14.6421"N	80°58'10.0729"W	10590.35	338.986	2.10	0.68	1.99	
16964.00	90.060	341.180	6053.01	10677.54	9975.09	-3827.68	1648997.86	14351625.15	39°31'15.5228"N	80°58'10.4550"W	10684.27	339.007	0.58	-0.33	-0.48	
17059.00	90.030	340.980	6052.94	10772.54	10064.96	-3858.49	1648967.06	14351714.99	39°31'16.4111"N	80°58'10.8477"W	10779.21	339.025	0.21	-0.03	-0.21	
17154.00	89.910	340.880	6052.99	10867.54	10154.75	-3889.52	1648936.04	14351804.74	39°31'17.2986"N	80°58'11.2433"W	10874.16	339.042	0.16	-0.13	-0.11	
17249.00	90.370	340.980	6052.75	10962.54	10244.53	-3920.56	1648905.01	14351894.49	39°31'18.1860"N	80°58'11.6390"W	10969.10	339.058	0.50	0.48	0.11	
17343.00	90.370	340.890	6052.15	11056.54	10333.37	-3951.27	1648874.32	14351983.29	39°31'19.0642"N	80°58'12.0305"W	11063.05	339.074	0.10	0.00	-0.10	
17438.00	90.180	340.740	6051.69	11151.54	10423.10	-3982.49	1648843.12	14352072.98	39°31'19.9511"N	80°58'12.4284"W	11158.01	339.089	0.25	-0.20	-0.16	
17533.00	90.060	340.670	6051.49	11246.54	10512.76	-4013.88	1648811.74	14352162.61	39°31'20.8373"N	80°58'12.8286"W	11252.97	339.103	0.15	-0.13	-0.07	
17627.00	90.090	340.940	6051.37	11340.54	10601.53	-4044.78	1648780.84	14352251.34	39°31'21.7148"N	80°58'13.2227"W	11346.93	339.117	0.29	0.03	0.29	
17722.00	90.680	340.900	6050.73	11435.53	10691.31	-4075.84	1648749.80	14352341.09	39°31'22.6022"N	80°58'13.6185"W	11441.88	339.132	0.62	0.62	-0.04	
17817.00	90.740	340.800	6049.55	11530.53	10781.05	-4107.00	1648718.65	14352430.79	39°31'23.4892"N	80°58'14.0158"W	11536.83	339.146	0.12	0.06	-0.11	
17911.00	90.710	340.690	6048.36	11624.52	10869.78	-4137.99	1648687.67	14352519.49	39°31'24.3663"N	80°58'14.4110"W	11630.79	339.159	0.12	-0.03	-0.12	
18006.00	90.740	341.010	6047.16	11719.51	10959.52	-4169.15	1648656.52	14352609.19	39°31'25.2533"N	80°58'14.8083"W	11725.74	339.172	0.34	0.03	0.34	
18101.00	90.800	340.930	6045.88	11814.50	11049.34	-4200.08	1648625.61	14352698.97	39°31'26.1411"N	80°58'15.2026"W	11820.68	339.187	0.07	0.06	-0.02	
18196.00	90.800	340.360	6044.56	11909.49	11138.97	-4231.52	1648594.18	14352788.57	39°31'27.0271"N	80°58'15.6033"W	11915.64	339.199	0.66	0.00	-0.66	
18290.00	90.770	341.080	6043.27	12003.48	11227.69	-4262.55	1648563.16	14352877.25	39°31'27.9040"N	80°58'15.9990"W	12009.60	339.211	0.77	-0.03	0.77	
18385.00	90.220	340.430	6042.45	12098.47	11317.38	-4293.86	1648531.86	14352966.90	39°31'28.7905"N	80°58'16.3982"W	12104.56	339.223	0.90	-0.58	-0.68	
18480.00	90.340	340.560	6041.99	12193.47	11406.93	-4325.58	1648500.16	14353056.41	39°31'29.6757"N	80°58'16.8026"W	12199.53	339.233	0.19	0.13	0.14	
18575.00	89.940	340.930	6041.75	12288.46	11496.61	-4356.91	1648468.84	14353146.06	39°31'30.5622"N	80°58'17.2020"W	12294.50	339.245	0.57	-0.42	0.39	
18670.00	89.630	340.270	6042.11	12383.46	11586.22	-4388.46	1648437.30	14353235.63	39°31'31.4478"N	80°58'17.6044"W	12389.47	339.255	0.77	-0.33	-0.69	
18764.00	89.720	340.970	6042.64	12477.46	11674.89	-4419.65	1648406.12	14353324.27	39°31'32.3243"N	80°58'18.0021"W	12483.44	339.265	0.75	0.10	0.74	
18859.00	89.880	340.770	6042.97	12572.46	11764.64	-4450.79	1648375.00	14353413.98	39°31'33.2115"N	80°58'18.3990"W	12578.41	339.277	0.27	0.17	-0.21	
18954.00	90.370	342.510	6042.77	12667.45	11854.80	-4480.71	1648345.09	14353504.11	39°31'34.1026"N	80°58'18.7805"W	12673.32	339.295	1.90	0.52	1.83	
19049.00	90.740	344.400	6041.85	12762.35	11945.86	-4507.76	1648318.05	14353595.13	39°31'35.0027"N	80°58'19.1253"W	12768.06	339.326	2.03	0.39	1.99	
19143.00	90.890	341.930	6040.51	12856.27	12035.82	-4534.98	1648290.84	14353685.05	39°31'35.8918"N	80°58'19.4723"W	12861.84	339.354	2.63	0.16	-2.63	
19238.00	91.660	342.050	6038.40	12951.23	12126.14	-4564.34	1648261.49	14353775.34	39°31'36.7846"N	80°58'19.8467"W	12956.71	339.373	0.82	0.81	0.13	
19333.00	91.170	341.860	6036.05	13046.19	12216.44	-4593.76	1648232.08	14353865.60	39°31'37.6771"N	80°58'20.2218"W	13051.59	339.392	0.55	-0.52	-0.20	





# Actual Wellpath Report

Phaeton Unit 1H AWP Proj: 23949'  
Page 9 of 13



REFERENCE WELLPATH IDENTIFICATION				
Operator	ANTERO RESOURCES CORPORATION		Well	Phaeton Unit 1H
Field	Tyler		API	47-095-02786-0000
Facility	Eldon Pad		Wellbore	Phaeton Unit 1H AWB
Slot	Slot J			

WELLPATH DATA (260 stations)																
MD [ft]	Inclination [°]	Azimuth [°]	TVD [ft]	Vert Sect [ft]	North [ft]	East [ft]	Grid East [US ft]	Grid North [US ft]	Latitude	Longitude	Closure Dist [ft]	Closure Dir [°]	DLS [°/100ft]	Build Rate [°/100ft]	Turn Rate [°/100ft]	Comments
19428.00	90.830	341.850	6034.39	13141.17	12306.70	-4623.34	1648202.51	14353955.82	39°31'38.5693"N	80°58'20.5989"W	13146.49	339.410	0.36	-0.36	-0.01	
19522.00	91.050	341.500	6032.85	13235.15	12395.92	-4652.89	1648172.98	14354045.01	39°31'39.4512"N	80°58'20.9757"W	13240.40	339.428	0.44	0.23	-0.37	
19617.00	90.890	341.720	6031.24	13330.13	12486.06	-4682.86	1648143.02	14354135.11	39°31'40.3421"N	80°58'21.3578"W	13335.32	339.442	0.29	-0.17	0.23	
19712.00	90.890	341.070	6029.77	13425.12	12576.08	-4713.17	1648112.73	14354225.10	39°31'41.2320"N	80°58'21.7442"W	13430.25	339.455	0.68	0.00	-0.68	
19806.00	90.710	341.890	6028.45	13519.10	12665.20	-4743.02	1648082.89	14354314.18	39°31'42.1129"N	80°58'22.1248"W	13524.18	339.469	0.89	-0.19	0.87	
19901.00	90.740	342.000	6027.25	13614.08	12755.52	-4772.46	1648053.46	14354404.46	39°31'43.0056"N	80°58'22.5002"W	13619.09	339.487	0.12	0.03	0.12	
19996.00	90.220	341.950	6026.46	13709.07	12845.85	-4801.86	1648024.07	14354494.76	39°31'43.8985"N	80°58'22.8750"W	13714.00	339.504	0.55	-0.55	-0.05	
20090.00	90.090	340.560	6026.20	13803.07	12934.86	-4832.06	1647993.88	14354583.73	39°31'44.7783"N	80°58'23.2602"W	13807.95	339.516	1.49	-0.14	-1.48	
20185.00	90.860	342.140	6025.41	13898.06	13024.87	-4862.44	1647963.51	14354673.70	39°31'45.6679"N	80°58'23.6475"W	13902.89	339.528	1.85	0.81	1.66	
20280.00	90.490	342.320	6024.29	13993.03	13115.33	-4891.43	1647934.53	14354764.13	39°31'46.5621"N	80°58'24.0172"W	13997.78	339.547	0.43	-0.39	0.19	
20374.00	90.680	342.050	6023.33	14087.01	13204.82	-4920.19	1647905.79	14354853.58	39°31'47.4466"N	80°58'24.3838"W	14091.68	339.564	0.35	0.20	-0.29	
20469.00	90.860	341.790	6022.06	14181.99	13295.12	-4949.67	1647876.32	14354943.84	39°31'48.3391"N	80°58'24.7597"W	14186.59	339.580	0.33	0.19	-0.27	
20564.00	90.950	341.680	6020.56	14276.97	13385.32	-4979.44	1647846.56	14355034.01	39°31'49.2307"N	80°58'25.1393"W	14281.51	339.594	0.15	0.09	-0.12	
20658.00	90.860	341.590	6019.07	14370.95	13474.52	-5009.05	1647816.96	14355123.18	39°31'50.1124"N	80°58'25.5169"W	14375.44	339.608	0.14	-0.10	-0.10	
20753.00	91.080	342.070	6017.46	14465.93	13564.77	-5038.67	1647787.35	14355213.39	39°31'51.0045"N	80°58'25.8946"W	14470.36	339.622	0.56	0.23	0.51	
20848.00	90.310	341.500	6016.31	14560.91	13655.00	-5068.37	1647757.67	14355303.59	39°31'51.8963"N	80°58'26.2732"W	14565.28	339.636	1.01	-0.81	-0.60	
20943.00	90.430	341.650	6015.70	14655.90	13745.13	-5098.39	1647727.66	14355393.68	39°31'52.7872"N	80°58'26.6561"W	14660.23	339.649	0.20	0.13	0.16	
21038.00	90.430	341.640	6014.99	14750.90	13835.29	-5128.31	1647697.76	14355483.81	39°31'53.6784"N	80°58'27.0376"W	14755.17	339.662	0.01	0.00	-0.01	
21132.00	90.650	341.340	6014.10	14844.89	13924.43	-5158.15	1647667.93	14355572.90	39°31'54.5594"N	80°58'27.4181"W	14849.11	339.673	0.40	0.23	-0.32	
21227.00	90.650	341.710	6013.02	14939.88	14014.53	-5188.25	1647637.84	14355662.96	39°31'55.4500"N	80°58'27.8019"W	14944.06	339.685	0.39	0.00	0.39	
21322.00	90.430	341.350	6012.13	15034.87	14104.63	-5218.34	1647607.75	14355753.03	39°31'56.3405"N	80°58'28.1857"W	15039.00	339.697	0.44	-0.23	-0.38	
21417.00	90.740	341.850	6011.16	15129.86	14194.77	-5248.33	1647577.78	14355843.13	39°31'57.2315"N	80°58'28.5681"W	15133.95	339.709	0.62	0.33	0.53	
21511.00	90.650	342.040	6010.02	15223.84	14284.13	-5277.46	1647548.66	14355932.46	39°31'58.1148"N	80°58'28.9395"W	15227.87	339.723	0.22	-0.10	0.20	
21606.00	90.550	342.190	6009.02	15318.82	14374.54	-5306.63	1647519.50	14356022.83	39°31'59.0084"N	80°58'29.3116"W	15322.78	339.737	0.19	-0.11	0.16	
21701.00	90.370	342.040	6008.26	15413.80	14464.94	-5335.81	1647490.34	14356113.20	39°31'59.9020"N	80°58'29.6836"W	15417.70	339.752	0.25	-0.19	-0.16	
21795.00	90.400	341.810	6007.63	15507.79	14554.30	-5364.97	1647461.18	14356202.52	39°32'0.7852"N	80°58'30.0555"W	15511.63	339.765	0.25	0.03	-0.24	
21889.00	90.830	342.040	6006.62	15601.77	14643.66	-5394.14	1647432.03	14356291.84	39°32'1.6684"N	80°58'30.4274"W	15605.56	339.778	0.52	0.46	0.24	
21984.00	90.860	340.940	6005.22	15696.76	14733.73	-5424.29	1647401.89	14356381.88	39°32'2.5587"N	80°58'30.8119"W	15700.50	339.789	1.16	0.03	-1.16	
22079.00	91.140	341.000	6003.56	15791.74	14823.52	-5455.26	1647370.93	14356471.64	39°32'3.4463"N	80°58'31.2069"W	15795.47	339.796	0.30	0.29	0.06	
22174.00	90.580	341.000	6002.13	15886.73	14913.34	-5486.19	1647340.02	14356561.42	39°32'4.3340"N	80°58'31.6013"W	15890.43	339.803	0.59	-0.59	0.00	





# Actual Wellpath Report

Phaeton Unit 1H AWP Proj: 23949'  
Page 10 of 13



REFERENCE WELLPATH IDENTIFICATION			
Operator	ANTERO RESOURCES CORPORATION	Well	Phaeton Unit 1H
Field	Tyler	API	47-095-02786-0000
Facility	Eldon Pad	Wellbore	Phaeton Unit 1H AWB
Slot	Slot J		

WELLPATH DATA (260 stations) † = interpolated, ‡ = extrapolated station																
MD [ft]	Inclination [°]	Azimuth [°]	TVD [ft]	Vert Sect [ft]	North [ft]	East [ft]	Grid East [US ft]	Grid North [US ft]	Latitude	Longitude	Closure Dist [ft]	Closure Dir [°]	DLS [°/100ft]	Build Rate [°/100ft]	Turn Rate [°/100ft]	Comments
22269.00	91.140	340.930	6000.71	15981.72	15003.13	-5517.17	1647309.05	14356651.17	39°32'5.2216"N	80°58'31.9964"W	15985.40	339.810	0.59	0.59	-0.07	
22363.00	90.860	341.050	5999.07	16075.71	15091.99	-5547.78	1647278.45	14356740.00	39°32'6.0999"N	80°58'32.3868"W	16079.37	339.817	0.32	-0.30	0.13	
22458.00	90.920	340.590	5997.59	16170.69	15181.71	-5578.99	1647247.25	14356829.68	39°32'6.9866"N	80°58'32.7848"W	16174.34	339.823	0.49	0.06	-0.48	
22553.00	90.890	340.820	5996.09	16265.68	15271.36	-5610.38	1647215.88	14356919.30	39°32'7.8728"N	80°58'33.1851"W	16269.32	339.828	0.24	-0.03	0.24	
22648.00	91.020	340.800	5994.51	16360.67	15361.07	-5641.60	1647184.67	14357008.97	39°32'8.7595"N	80°58'33.5833"W	16364.29	339.833	0.14	0.14	-0.02	
22742.00	90.770	340.700	5993.04	16454.65	15449.80	-5672.59	1647153.69	14357097.67	39°32'9.6366"N	80°58'33.9785"W	16458.27	339.839	0.29	-0.27	-0.11	
22837.00	90.800	340.740	5991.74	16549.64	15539.47	-5703.95	1647122.34	14357187.29	39°32'10.5228"N	80°58'34.3785"W	16553.25	339.844	0.05	0.03	0.04	
22931.00	90.280	340.540	5990.85	16643.64	15628.15	-5735.11	1647091.19	14357275.94	39°32'11.3993"N	80°58'34.7759"W	16647.24	339.848	0.59	-0.55	-0.21	
23026.00	90.340	340.270	5990.34	16738.63	15717.64	-5766.97	1647059.35	14357365.40	39°32'12.2840"N	80°58'35.1822"W	16742.23	339.851	0.29	0.06	-0.28	
23121.00	90.400	340.050	5989.72	16833.61	15807.00	-5799.21	1647027.12	14357454.72	39°32'13.1672"N	80°58'35.5935"W	16837.23	339.853	0.24	0.06	-0.23	
23215.00	90.000	340.790	5989.40	16927.61	15895.57	-5830.71	1646995.63	14357543.25	39°32'14.0426"N	80°58'35.9952"W	16931.22	339.856	0.89	-0.43	0.79	
23310.00	90.340	340.810	5989.11	17022.61	15985.28	-5861.95	1646964.40	14357632.93	39°32'14.9293"N	80°58'36.3937"W	17026.21	339.862	0.36	0.36	0.02	
23405.00	90.030	340.660	5988.81	17117.60	16074.96	-5893.30	1646933.07	14357722.57	39°32'15.8157"N	80°58'36.7935"W	17121.20	339.866	0.36	-0.33	-0.16	
23499.00	90.550	341.160	5988.33	17211.60	16163.79	-5924.04	1646902.34	14357811.37	39°32'16.6937"N	80°58'37.1856"W	17215.18	339.872	0.77	0.55	0.53	
23594.00	91.050	341.930	5987.01	17306.59	16253.90	-5954.11	1646872.28	14357901.43	39°32'17.5844"N	80°58'37.5691"W	17310.13	339.881	0.97	0.53	0.81	
23688.00	90.950	341.660	5985.37	17400.57	16343.18	-5983.47	1646842.93	14357990.68	39°32'18.4668"N	80°58'37.9436"W	17404.06	339.892	0.31	-0.11	-0.29	
23783.00	91.050	340.820	5983.71	17495.55	16433.11	-6014.02	1646812.40	14358080.58	39°32'19.3558"N	80°58'38.3332"W	17499.02	339.899	0.89	0.11	-0.88	
23878.00	91.230	340.280	5981.82	17590.53	16522.68	-6045.65	1646780.78	14358170.11	39°32'20.2410"N	80°58'38.7366"W	17594.00	339.902	0.60	0.19	-0.57	
23924.00	90.890	340.720	5980.97	17686.52	16566.03	-6061.00	1646765.43	14358213.44	39°32'20.6695"N	80°58'38.9324"W	17639.98	339.904	1.21	-0.74	0.96	
23949.00‡	90.890	340.720	5980.58	17661.51	16589.62	-6069.25	1646757.18	14358237.03	39°32'20.9028"N	80°58'39.0377"W	17664.98	339.905	0.00	0.00	0.00	Projected MD at TD: 23949'





# Actual Wellpath Report

Phaeton Unit 1H AWP Proj: 23949'  
Page 11 of 13



## REFERENCE WELLPATH IDENTIFICATION

Operator	ANTERO RESOURCES CORPORATION	Well	Phaeton Unit 1H
Field	Tyler	API	47-095-02786-0000
Facility	Eldon Pad	Wellbore	Phaeton Unit 1H AWB
Slot	Slot J		

## HOLE & CASING SECTIONS - Ref Wellbore: Phaeton Unit 1H AWB Ref Wellpath: Phaeton Unit 1H AWP Proj: 23949'

String/Diameter	Start MD [ft]	End MD [ft]	Interval [ft]	Start TVD [ft]	End TVD [ft]	Start N/S [ft]	Start E/W [ft]	End N/S [ft]	End E/W [ft]
20in Conductor	30.00	130.00	100.00	30.00	130.00	0.00	0.00	0.16	-0.15
17.5in Open Hole	130.00	350.00	220.00	130.00	350.00	0.16	-0.15	0.08	-0.88
13.375in Casing Surface	30.00	330.00	300.00	30.00	330.00	0.00	0.00	0.15	-0.78
12.25in Open Hole	350.00	2784.00	2434.00	350.00	2783.23	0.08	-0.88	-26.29	-23.97
9.625in Casing Intermediate	30.00	2754.00	2724.00	30.00	2753.23	0.00	0.00	-26.05	-24.39
8.75in Open Hole	2784.00	5287.00	2503.00	2783.23	5237.00	-26.29	-23.97	-469.59	-166.83
8.5in Open Hole	5287.00	23949.00	18662.00	5237.00	5980.58	-469.59	-166.83	16589.62	-6069.25
5.5in Casing Production	30.00	23929.00	23899.00	30.00	5980.89	0.00	0.00	16570.75	-6062.65

## TARGETS

Name	TVD [ft]	North [ft]	East [ft]	Grid East [US ft]	Grid North [US ft]	Latitude	Longitude	Shape
Phaeton Unit 1H BHL Rev-2	5974.09	16616.83	-6101.89	1646724.56	14358264.22	39°32'21.1717"N	80°58'39.4542"W	point
Phaeton Unit 1H POE Rev-2	6081.00	-87.54	-361.55	1652462.60	14341566.57	39°29'36.0564"N	80°57'26.2859"W	point
Phaeton Unit 1H LP Rev-2	6126.00	154.75	-444.80	1652379.38	14341808.75	39°29'38.4513"N	80°57'27.3465"W	point
Phaeton Unit 1H 50' L/R Hard Line	6500.00	8264.65	-3231.72	1649593.58	14349915.40	39°30'58.6158"N	80°58'2.8580"W	rectangle

2D Rectangle 17663.2 x 100.





# Actual Wellpath Report

Phaeton Unit 1H AWP Proj: 23949'  
Page 12 of 13


**REFERENCE WELLPATH IDENTIFICATION**

Operator	ANTERO RESOURCES CORPORATION	Well	Phaeton Unit 1H
Field	Tyler	API	47-095-02786-0000
Facility	Eldon Pad	Wellbore	Phaeton Unit 1H AWB
Slot	Slot J		

**WELLPATH COMPOSITION - Ref Wellbore: Phaeton Unit 1H AWB    Ref Wellpath: Phaeton Unit 1H AWP Proj: 23949'**

Start MD [ft]	End MD [ft]	Positional Uncertainty Model	Log Name/Comment	Wellbore	Survey Date
30.00	264.00	Gyrodata 2015 - GC+WIR+DPIPE	01 Gyrodata MS Gyro <17-1/2"> (100'-264')	Phaeton Unit 1H AWB	6/23/2022
264.00	2711.00	BH NaviTrak (2019) (Axial Corr+HRGM)	02 APS EM <12-1/4"> (264')(418'-2711')	Phaeton Unit 1H AWB	6/23/2022
2711.00	5207.00	BH NaviTrak (2019) (Axial Corr+HRGM)	03 APS EM <8-3/4"> (2711')(2840'-5207')	Phaeton Unit 1H AWB	7/26/2022
5207.00	23949.00	BH AutoTrak Curve/eXpress (2019) (HRGM, Short spacing)	04 BH AT Curve <8-1/2"> (5207')(5265'-23924')	Phaeton Unit 1H AWB	7/26/2022





# Actual Wellpath Report

Phaeton Unit 1H AWP Proj: 23949'

Page 13 of 13



REFERENCE WELLPATH IDENTIFICATION			
Operator	ANTERO RESOURCES CORPORATION	Well	Phaeton Unit 1H
Field	Tyler	API	47-095-02786-0000
Facility	Eldon Pad	Wellbore	Phaeton Unit 1H AWB
Slot	Slot J		

COMMENTS
<p><b>Wellpath general comments</b> API: 47-095-02786-0000 BH Job #: 111394536 Rig: H&amp;P 519 Duration: 7/29/2022-8/3/2022 Gyrodatta MS Gyro &lt;17-1/2"&gt; (100'-264') APS EM &lt;12-1/4"&gt; (264')(418'-2711') APS EM &lt;8-3/4"&gt; (2711')(2840'-5207') BH AT Curve &lt;8-1/2"&gt; (5207')(5265'-23924') Sycamore: 5975' MD Middlesex: 6113' MD Burkett: 6275' MD Marcellus POE: 6348' MD Projected MD at TD: 23949'</p>