



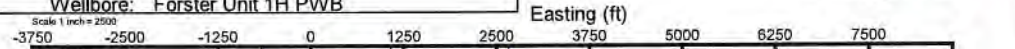
ANTERO RESOURCES CORPORATION



Location: Tyler County, WV
 Field: Tyler
 Facility: Beech Run Pad

Slot: Slot F
 Well: Forster Unit 1H
 Wellbore: Forster Unit 1H PWB

PHI reference wellpath is Forster Unit 1H PWB Row-C-D	Grid System: NAD27 / UTMZone 17 North, US feet
True vertical depths are referenced to H&P 317 (RKB)	North Reference: Grid north
Reference wellpath measured depths are referenced to H&P 317 (RKB)	Scale: True distance
H&P 317 (RKB) to Mean Sea Level: 1247.5 feet	Coordinates are in feet referenced to SKI
Mean Sea Level to Ground level (At Slot: Slot F): -1222 feet	Depths are in feet
Offset wellpath MDs are referenced to each path's defined MD datum	Created by: edcaryar on 2023-01-07; Database: WA_MPL_EASTERNUS_Data

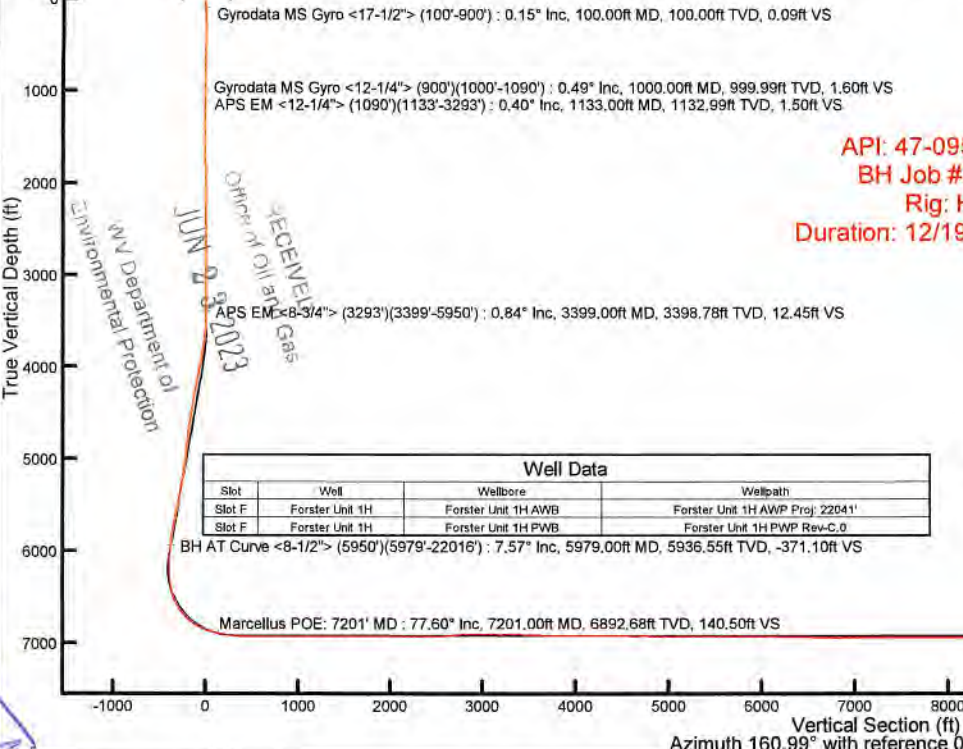


Location Information				
Facility Name	Grid East (US ft)	Grid North (US ft)	Latitude	Longitude
Beech Run Pad	1701783.750	14354455.970	39°31'42.7928"N	80°46'56.5204"W
Slot	Local N (ft)	Local E (ft)	Grid East (US ft)	Grid North (US ft)
Slot F	29.28	6.62	1701790.370	14354485.240

Comment: Forster Unit 1H
 H&P 317 (RKB) to Ground level (At Slot: Slot F): 25.5ft
 Mean Sea Level to Ground level (At Slot: Slot F): -1222ft
 H&P 317 (RKB) to Mean Sea Level: 1247.5ft

Well Profile Data								
Design Comment	MD (ft)	Inc (°)	Az (°)	TVD (ft)	Local N (ft)	Local E (ft)	DLS (°/100ft)	VS (ft)
Tie On	3293.00	0.700	219.470	3292.79	-16.88	-12.12	0.25	11.82
Proj. to Bottom	3369.00	0.700	219.470	3366.78	-17.39	-12.71	0.00	12.31
KOP 1	3449.00	0.700	219.470	3446.77	-18.15	-13.33	0.00	12.82
End of 3D Arc	4056.23	11.522	11.456	4052.12	38.84	-3.81	2.00	-37.71
Curve KOP	6112.49	11.522	11.456	6056.94	441.19	77.97	0.00	-391.73
POE	7179.91	73.926	169.871	6887.00	-48.32	214.13	8.00	115.43
Landing PL	7371.84	90.000	169.871	6915.00	-243.53	249.00	8.00	311.35
On AZI	7567.72	90.000	169.894	6915.00	-529.62	323.34	3.00	606.06
BHL	22050.20	90.000	169.894	6915.00	-14128.06	5007.14	0.00	14888.53

Scale 1 inch = 2000'
 WV Department of Environmental Protection
 RECEIVED
 JUN 29 2023
 OPERATIONS AND PERMITS
 RECEIVED



API: 47-095-02803-0000
 BH Job #: 111519970
 Rig: H&P 317
 Duration: 12/19/2022-12/23/2022

Well Data			
Slot	Well	Wellbore	Wellpath
Slot F	Forster Unit 1H	Forster Unit 1H AWP	Forster Unit 1H AWP Proj: 22041'
Slot F	Forster Unit 1H	Forster Unit 1H PWB	Forster Unit 1H PWB Rev-C-D



User specified (HDGM) Dip: 66.38° Field: 51711 nT
 Magnetic North is 7.59 degrees West of True North (at 12/15/2022)
 Grid North is 0.14 degrees East of True North
 To correct azimuth from True to Grid subtract 0.14 degrees
 To correct azimuth from Magnetic to Grid subtract 7.73 degrees

Projected MD at TD: 22041': 5993.86ft TVD, 14114.09ft S, 4992.52ft E
 BHL 57'
 Projected MD at TD: 22041': 89.11° Inc, 22041.00ft MD, 6993.86ft TVD, 14970.56ft VS

Vertical Section (ft)
 Azimuth 160.99° with reference 0.00 N, 0.00 E

Scale 1 inch = 2000'



Actual Wellpath Report

Forster Unit 1H AWP Proj: 22041'
Page 1 of 13



REFERENCE WELLPATH IDENTIFICATION			
Operator	ANTERO RESOURCES CORPORATION	Well	Forster Unit 1H
Field	Tyler	API	47-095-02803-0000
Facility	Beech Run Pad	Wellbore	Forster Unit 1H AWB
Slot	Slot F		

REPORT SETUP INFORMATION			
Projection System	NAD27 / UTM Zone 17 North, US feet	Software System	WellArchitect® 6.0
North Reference	Grid	User	Edsaryar
Scale	0.999604	Report Generated	1/7/2023 at 12:00:00 AM
Convergence at slot	0.14° East	Database	WA_MPL_EASTERNUS_Defn

WELLPATH LOCATION						
	Local coordinates		Grid coordinates		Geographic coordinates	
	North[ft]	East[ft]	Easting[US ft]	Northing[US ft]	Latitude	Longitude
Slot Location	29.28	6.62	1701790.37	14354485.24	39°31'43.0820"N	80°46'56.4350"W
Facility Reference Pt			1701783.75	14354455.97	39°31'42.7928"N	80°46'56.5204"W
Field Reference Pt			0.00	0.00	0°00'0.0000"	85°29'19.3013"W

WELLPATH DATUM			
Calculation method	Minimum curvature	H&P 317 (RKB) to Facility Vertical Datum	1247.50ft
Horizontal Reference Pt	Slot	H&P 317 (RKB) to Mean Sea Level	1247.50ft
Vertical Reference Pt	H&P 317 (RKB)	H&P 317 (RKB) to Ground Level at Slot (Slot F)	25.50ft
MD Reference Pt	H&P 317 (RKB)	Section Origin	N 0.00, E 0.00 ft
Field Vertical Reference	Mean Sea Level	Section Azimuth	160.99°

RECEIVED
 Office of Oil and Gas
 JUN 23 2023
 WV Department of
 Environmental Protection



Actual Wellpath Report

Forster Unit 1H AWP Proj: 22041'
Page 2 of 13



REFERENCE WELLPATH IDENTIFICATION				
Operator	ANTERO RESOURCES CORPORATION		Well	Forster Unit 1H
Field	Tyler		API	47-095-02803-0000
Facility	Beech Run Pad		Wellbore	Forster Unit 1H AWB
Slot	Slot F			

WELLPATH DATA (242 stations) † = interpolated, ‡ = extrapolated station																
MD (ft)	Inclination (°)	Azimuth (°)	TVD (ft)	Vert Sect (ft)	North (ft)	East (ft)	Grid East (US ft)	Grid North (US ft)	Latitude	Longitude	Closure Dist (ft)	Closure Dir (°)	DLS (°/100ft)	Build Rate (°/100ft)	Turn Rate (°/100ft)	Comments
0.00†	0.000	137.850	0.00	0.00	0.00	0.00	1701790.37	14354485.24	39°31'43.0820"N	80°46'56.4350"W	0.00	0.000	0.00	0.00	0.00	
25.50	0.000	137.850	25.50	0.00	0.00	0.00	1701790.37	14354485.24	39°31'43.0820"N	80°46'56.4350"W	0.00	0.000	0.00	0.00	0.00	
100.00	0.150	137.850	100.00	0.09	-0.07	0.07	1701790.44	14354485.17	39°31'43.0813"N	80°46'56.4342"W	0.10	137.850	0.20	0.20	0.00	Gyrodata MS Gyro <17-1/2"> (100'-900')
200.00	0.280	166.080	200.00	0.45	-0.41	0.21	1701790.58	14354484.83	39°31'43.0780"N	80°46'56.4323"W	0.46	152.450	0.16	0.13	28.23	
300.00	0.280	136.310	300.00	0.90	-0.81	0.43	1701790.80	14354484.43	39°31'43.0740"N	80°46'56.4296"W	0.91	152.106	0.14	-0.02	-29.77	
400.00	0.330	115.910	400.00	1.31	-1.10	0.84	1701791.21	14354484.14	39°31'43.0712"N	80°46'56.4243"W	1.38	142.465	0.13	0.07	-20.40	
500.00	0.410	117.000	499.99	1.77	-1.39	1.42	1701791.79	14354483.85	39°31'43.0683"N	80°46'56.4169"W	1.99	134.281	0.08	0.08	1.09	
600.00	0.190	47.390	599.99	1.96	-1.44	1.86	1701792.23	14354483.80	39°31'43.0678"N	80°46'56.4113"W	2.35	127.642	0.39	-0.22	-69.61	
700.00	0.330	64.630	699.99	1.87	-1.20	2.24	1701792.61	14354484.04	39°31'43.0701"N	80°46'56.4064"W	2.55	118.143	0.16	0.14	17.24	
800.00	0.190	52.710	799.99	1.78	-0.98	2.64	1701793.01	14354484.26	39°31'43.0723"N	80°46'56.4014"W	2.81	110.327	0.15	-0.14	-11.92	
900.00	0.100	76.870	899.99	1.74	-0.86	2.85	1701793.22	14354484.38	39°31'43.0735"N	80°46'56.3986"W	2.98	106.706	0.11	-0.09	24.16	
1000.00	0.490	271.260	999.99	1.60	-0.83	2.51	1701792.88	14354484.41	39°31'43.0738"N	80°46'56.4030"W	2.64	108.234	0.59	0.39	-165.61	Gyrodata MS Gyro <12-1/4"> (900')(1000'-1090')
1090.00	0.470	243.510	1089.99	1.51	-0.98	1.80	1701792.16	14354484.26	39°31'43.0723"N	80°46'56.4121"W	2.05	118.706	0.26	-0.02	-30.83	
1133.00	0.400	265.010	1132.99	1.50	-1.08	1.49	1701791.86	14354484.17	39°31'43.0714"N	80°46'56.4161"W	1.84	125.843	0.41	-0.16	50.00	APS EM <12-1/4"> (1090')(1133'-3293')
1228.00	0.340	219.740	1227.98	1.57	-1.32	0.98	1701791.35	14354483.92	39°31'43.0689"N	80°46'56.4226"W	1.64	143.487	0.31	-0.06	-47.65	
1322.00	0.470	219.570	1321.98	1.91	-1.83	0.55	1701790.92	14354483.41	39°31'43.0639"N	80°46'56.4280"W	1.91	163.184	0.14	0.14	-0.18	
1417.00	0.450	208.590	1416.98	2.37	-2.46	0.13	1701790.50	14354482.78	39°31'43.0577"N	80°46'56.4335"W	2.46	177.044	0.09	-0.02	-11.56	
1512.00	0.480	188.800	1511.98	2.97	-3.18	-0.11	1701790.26	14354482.06	39°31'43.0506"N	80°46'56.4366"W	3.18	182.023	0.17	0.03	-20.83	
1606.00	0.570	211.440	1605.97	3.62	-3.97	-0.42	1701789.95	14354481.27	39°31'43.0428"N	80°46'56.4405"W	3.99	185.991	0.24	0.10	24.09	
1701.00	1.010	187.100	1700.96	4.67	-5.20	-0.77	1701789.60	14354480.04	39°31'43.0306"N	80°46'56.4450"W	5.26	188.380	0.57	0.46	-25.62	
1796.00	1.130	169.020	1795.95	6.35	-6.95	-0.69	1701789.68	14354478.29	39°31'43.0133"N	80°46'56.4441"W	6.99	185.679	0.38	0.13	-19.03	
1890.00	1.210	165.480	1889.93	8.26	-8.82	-0.27	1701790.10	14354476.42	39°31'42.9948"N	80°46'56.4387"W	8.83	181.728	0.11	0.09	-3.77	
1985.00	1.370	171.660	1984.90	10.37	-10.92	0.15	1701790.52	14354474.33	39°31'42.9741"N	80°46'56.4334"W	10.92	179.213	0.22	0.17	6.51	
2080.00	0.060	278.870	2079.89	11.47	-12.03	0.27	1701790.64	14354473.21	39°31'42.9631"N	80°46'56.4320"W	12.04	178.736	1.46	-1.38	112.85	
2175.00	0.560	297.410	2174.89	11.11	-11.81	-0.20	1701790.17	14354473.43	39°31'42.9653"N	80°46'56.4379"W	11.82	180.949	0.53	0.53	19.52	
2269.00	0.640	320.110	2268.89	10.28	-11.20	-0.94	1701789.43	14354474.05	39°31'42.9714"N	80°46'56.4474"W	11.24	184.798	0.26	0.09	24.15	
2364.00	0.670	297.010	2363.88	9.39	-10.54	-1.78	1701788.60	14354474.70	39°31'42.9779"N	80°46'56.4580"W	10.69	189.561	0.28	0.03	-24.32	
2459.00	0.740	288.720	2458.87	8.61	-10.09	-2.85	1701787.52	14354475.15	39°31'42.9824"N	80°46'56.4717"W	10.49	195.777	0.13	0.07	-8.73	
2553.00	0.700	266.390	2552.87	8.09	-9.93	-4.00	1701786.37	14354475.31	39°31'42.9840"N	80°46'56.4864"W	10.71	201.932	0.30	-0.04	-23.76	
2648.00	0.730	253.830	2647.86	7.90	-10.14	-5.16	1701785.21	14354475.11	39°31'42.9820"N	80°46'56.5012"W	11.37	206.974	0.17	0.03	-13.22	

RECEIVED
Office of Oil and Gas
JUN 23 2023
NY Department of
Environmental Protection



Actual Wellpath Report

Forster Unit 1H AWP Proj: 22041'
Page 3 of 13



REFERENCE WELLPATH IDENTIFICATION			
Operator	ANTERO RESOURCES CORPORATION	Well	Forster Unit 1H
Field	Tyler	API	47-095-02803-0000
Facility	Beech Run Pad	Wellbore	Forster Unit 1H AWB
Slot	Slot F		

WELLPATH DATA (242 stations)																
MD [ft]	Inclination [°]	Azimuth [°]	TVD [ft]	Vert Sect [ft]	North [ft]	East [ft]	Grid East [US ft]	Grid North [US ft]	Latitude	Longitude	Closure Dist [ft]	Closure Dir [°]	DLS ["/100ft]	Build Rate ["/100ft]	Turn Rate ["/100ft]	Comments
2742.00	0.970	239.400	2741.85	8.03	-10.71	-6.42	1701783.95	14354474.54	39°31'42.9763"N	80°46'56.5173"W	12.49	210.940	0.34	0.26	-15.35	
2837.00	0.890	223.500	2836.84	8.54	-11.65	-7.62	1701782.75	14354473.59	39°31'42.9670"N	80°46'56.5326"W	13.92	213.178	0.28	-0.08	-16.74	
2932.00	0.880	235.780	2931.83	9.07	-12.60	-8.73	1701781.64	14354472.65	39°31'42.9577"N	80°46'56.5468"W	15.33	214.720	0.20	-0.01	12.93	
3026.00	0.800	214.040	3025.82	9.65	-13.55	-9.69	1701780.68	14354471.70	39°31'42.9484"N	80°46'56.5592"W	16.66	215.586	0.35	-0.09	-23.13	
3121.00	0.900	216.790	3120.81	10.47	-14.70	-10.51	1701779.86	14354470.55	39°31'42.9370"N	80°46'56.5696"W	18.07	215.579	0.11	0.11	2.89	
3216.00	0.890	220.150	3215.79	11.27	-15.86	-11.44	1701778.94	14354469.39	39°31'42.9256"N	80°46'56.5815"W	19.55	215.797	0.06	-0.01	3.54	
3293.00	0.700	219.470	3292.79	11.82	-16.68	-12.12	1701778.25	14354468.57	39°31'42.9175"N	80°46'56.5902"W	20.62	216.007	0.25	-0.25	-0.88	
3399.00	0.840	228.830	3398.78	12.45	-17.69	-13.12	1701777.26	14354467.56	39°31'42.9075"N	80°46'56.6030"W	22.02	216.558	0.18	0.13	8.83	APS EM <8-3/4"> (3293')(3399'-5950')
3493.00	1.440	7.930	3492.77	11.66	-16.97	-13.47	1701776.90	14354468.27	39°31'42.9146"N	80°46'56.6075"W	21.67	218.442	2.28	0.64	147.98	
3588.00	4.770	9.730	3587.61	7.13	-11.90	-12.64	1701777.74	14354473.35	39°31'42.9648"N	80°46'56.5967"W	17.38	226.737	3.51	3.51	1.89	
3682.00	7.910	6.560	3681.03	-2.13	-1.62	-11.24	1701779.13	14354483.63	39°31'43.0663"N	80°46'56.5785"W	11.36	261.822	3.36	3.34	-3.37	
3776.00	10.170	6.270	3773.85	-15.47	13.06	-9.59	1701780.78	14354498.30	39°31'43.2113"N	80°46'56.5571"W	16.21	323.700	2.40	2.40	-0.31	
3870.00	12.080	11.490	3866.09	-31.46	30.95	-6.73	1701783.64	14354516.18	39°31'43.3881"N	80°46'56.5199"W	31.67	347.735	2.30	2.03	5.55	
3964.00	12.450	10.760	3957.94	-48.73	50.55	-2.88	1701787.49	14354535.76	39°31'43.5816"N	80°46'56.4702"W	50.63	356.742	0.43	0.39	-0.78	
4059.00	11.870	6.960	4050.81	-66.40	70.30	0.22	1701790.59	14354555.52	39°31'43.7769"N	80°46'56.4301"W	70.30	0.178	1.04	-0.61	-4.00	
4153.00	12.490	12.670	4142.70	-83.74	89.82	3.62	1701793.99	14354575.02	39°31'43.9696"N	80°46'56.3861"W	89.89	2.308	1.44	0.66	6.07	
4247.00	12.470	20.060	4234.48	-100.27	109.27	9.33	1701799.70	14354594.47	39°31'44.1617"N	80°46'56.3126"W	109.67	4.881	1.70	-0.02	7.86	
4342.00	11.630	9.930	4327.40	-116.62	128.34	14.50	1701804.86	14354613.53	39°31'44.3501"N	80°46'56.2460"W	129.16	6.446	2.39	-0.88	-10.66	
4436.00	10.390	6.070	4419.67	-132.59	146.10	17.03	1701807.39	14354631.28	39°31'44.5256"N	80°46'56.2132"W	147.09	6.649	1.53	-1.32	-4.11	
4531.00	9.330	1.930	4513.26	-147.54	162.32	18.20	1701808.56	14354647.49	39°31'44.6858"N	80°46'56.1978"W	163.33	6.396	1.34	-1.12	-4.36	
4626.00	9.420	10.430	4607.00	-161.50	177.66	19.86	1701810.22	14354662.83	39°31'44.8374"N	80°46'56.1761"W	178.77	6.379	1.46	0.09	8.95	
4720.00	8.920	8.840	4699.80	-174.64	192.43	22.38	1701812.74	14354677.59	39°31'44.9833"N	80°46'56.1435"W	193.72	6.633	0.60	-0.53	-1.69	
4815.00	7.680	4.910	4793.80	-186.96	206.03	24.05	1701814.41	14354691.19	39°31'45.1177"N	80°46'56.1217"W	207.43	6.658	1.43	-1.31	-4.14	
4909.00	8.150	11.780	4886.91	-198.42	218.81	25.95	1701816.31	14354703.96	39°31'45.2440"N	80°46'56.0971"W	220.34	6.763	1.12	0.50	7.31	
5004.00	9.420	18.330	4980.80	-210.39	232.78	29.77	1701820.13	14354717.93	39°31'45.3820"N	80°46'56.0479"W	234.68	7.287	1.70	1.34	6.89	
5098.00	8.490	14.600	5073.65	-222.29	246.80	33.94	1701824.29	14354731.94	39°31'45.5204"N	80°46'55.9943"W	249.12	7.829	1.17	-0.99	-3.97	
5192.00	9.240	15.940	5166.53	-234.25	260.77	37.76	1701828.11	14354745.91	39°31'45.6584"N	80°46'55.9451"W	263.49	8.239	0.83	0.80	1.43	
5287.00	11.260	14.500	5260.00	-248.24	277.09	42.18	1701832.53	14354762.22	39°31'45.8196"N	80°46'55.8882"W	280.28	8.655	2.14	2.13	-1.52	
5383.00	12.770	7.550	5353.90	-265.54	296.68	45.92	1701836.27	14354781.80	39°31'46.0131"N	80°46'55.8399"W	300.21	8.798	2.18	1.57	-7.24	
5478.00	13.600	10.570	5446.40	-284.65	318.07	49.35	1701839.70	14354803.18	39°31'46.2244"N	80°46'55.7955"W	321.88	8.819	1.14	0.87	3.18	

RECEIVED
Office of Oil and Gas
JUN 23 2023
WY Department of
Environmental Protection



Actual Wellpath Report

Forster Unit 1H AWP Proj: 22041'
Page 4 of 13



REFERENCE WELLPATH IDENTIFICATION			
Operator	ANTERO RESOURCES CORPORATION	Well	Forster Unit 1H
Field	Tyler	API	47-095-02803-0000
Facility	Beech Run Pad	Wellbore	Forster Unit 1H AWP
Slot	Slot F		

WELLPATH DATA (242 stations) † = interpolated, ‡ = extrapolated station																
MD [ft]	Inclination [°]	Azimuth [°]	TVD [ft]	Vert Sect [ft]	North [ft]	East [ft]	Grid East [US ft]	Grid North [US ft]	Latitude	Longitude	Closure Dist [ft]	Closure Dir [°]	DLS ["/100ft]	Build Rate ["/100ft]	Turn Rate ["/100ft]	Comments
5572.00	13.760	14.180	5537.74	-303.62	339.77	54.11	1701844.46	14354824.88	39°31'46.4388"N	80°46'55.7340"W	344.06	9.049	0.92	0.17	3.84	
5667.00	13.000	14.780	5630.16	-321.95	361.06	59.61	1701849.95	14354846.16	39°31'46.6490"N	80°46'55.6632"W	365.95	9.374	0.81	-0.80	0.63	
5761.00	11.650	8.820	5721.99	-339.13	380.66	63.76	1701854.10	14354865.75	39°31'46.8427"N	80°46'55.6096"W	385.96	9.508	1.97	-1.44	-6.34	
5856.00	11.000	15.560	5815.14	-355.08	398.87	67.66	1701858.00	14354883.95	39°31'47.0226"N	80°46'55.5592"W	404.57	9.627	1.55	-0.68	7.09	
5950.00	8.160	16.910	5907.82	-367.87	413.90	72.01	1701862.35	14354898.97	39°31'47.1710"N	80°46'55.5033"W	420.12	9.869	3.03	-3.02	1.44	
5979.00	7.570	16.190	5936.55	-371.10	417.70	73.14	1701863.48	14354902.78	39°31'47.2085"N	80°46'55.4887"W	424.06	9.932	2.06	-2.03	-2.48	BH AT Curve <8-1/2"> (5950')(5979'-22016')
6074.00	10.020	15.010	6030.43	-383.06	431.70	77.02	1701867.36	14354916.76	39°31'47.3468"N	80°46'55.4387"W	438.51	10.116	2.59	2.58	-1.24	
6168.00	5.490	47.380	6123.58	-391.65	442.65	82.46	1701872.79	14354927.71	39°31'47.4549"N	80°46'55.3690"W	450.26	10.552	6.52	-4.82	34.44	
6263.00	3.960	207.990	6218.46	-391.23	442.83	84.26	1701874.60	14354927.89	39°31'47.4566"N	80°46'55.3460"W	450.78	10.774	9.81	-1.61	169.06	
6357.00	9.720	213.240	6311.75	-384.15	433.32	78.39	1701868.73	14354918.39	39°31'47.3628"N	80°46'55.4213"W	440.35	10.254	6.16	6.13	5.59	
6452.00	13.400	169.740	6404.98	-368.33	415.74	75.95	1701866.29	14354900.82	39°31'47.1891"N	80°46'55.4530"W	422.62	10.352	9.66	3.87	-45.79	
6546.00	19.580	164.390	6495.07	-341.81	389.83	82.13	1701872.47	14354874.91	39°31'46.9328"N	80°46'55.3748"W	398.39	11.897	6.76	6.57	-5.69	
6641.00	28.810	166.110	6581.64	-303.04	352.19	91.93	1701882.26	14354837.29	39°31'46.5607"N	80°46'55.2509"W	363.99	14.629	9.74	9.72	1.81	
6644.00†	29.089	166.002	6584.26	-301.59	350.78	92.28	1701882.61	14354835.88	39°31'46.5467"N	80°46'55.2465"W	362.72	14.739	9.47	9.31	-3.60	Sycamore: 6644' MD
6735.00	37.590	163.420	6660.22	-251.73	302.63	105.58	1701895.90	14354787.75	39°31'46.0705"N	80°46'55.0783"W	320.52	19.232	9.47	9.34	-2.84	
6789.00†	43.047	163.536	6701.38	-216.84	269.14	115.51	1701905.83	14354754.28	39°31'45.7393"N	80°46'54.9526"W	292.88	23.227	10.11	10.11	0.22	Middlesex: 6789' MD
6830.00	47.190	163.610	6730.30	-187.82	241.28	123.72	1701914.04	14354726.43	39°31'45.4637"N	80°46'54.8487"W	271.15	27.147	10.11	10.11	0.18	
6924.00	57.020	164.630	6787.97	-113.85	170.01	143.95	1701934.26	14354655.19	39°31'44.7589"N	80°46'54.5927"W	222.77	40.255	10.49	10.46	1.09	
6942.00†	58.420	164.785	6797.58	-98.67	155.33	147.96	1701938.27	14354640.51	39°31'44.6137"N	80°46'54.5419"W	214.53	43.608	7.81	7.78	0.86	Burkett: 6942' MD
7012.00†	63.865	165.347	6831.35	-37.54	96.12	163.75	1701954.05	14354581.32	39°31'44.0281"N	80°46'54.3423"W	189.87	59.588	7.81	7.78	0.80	Tully: 7012' MD
7019.00	64.410	165.400	6834.41	-31.26	90.02	165.34	1701955.64	14354575.23	39°31'43.9678"N	80°46'54.3222"W	188.26	61.433	7.81	7.78	0.76	
7113.00	71.780	163.480	6869.45	55.74	6.08	188.75	1701979.05	14354491.32	39°31'43.1376"N	80°46'54.0260"W	188.85	88.155	8.07	7.84	-2.04	
7201.00†	77.597	163.434	6892.68	140.50	-75.25	212.91	1702003.20	14354410.02	39°31'42.3332"N	80°46'53.7202"W	225.82	109.465	6.61	6.61	-0.05	Marcellus POE: 7201' MD
7208.00	78.060	163.430	6894.16	147.33	-81.81	214.86	1702005.15	14354403.46	39°31'42.2684"N	80°46'53.6955"W	229.91	110.844	6.61	6.61	-0.05	
7303.00	81.590	164.820	6910.94	240.68	-171.73	240.43	1702030.70	14354313.58	39°31'41.3790"N	80°46'53.3720"W	295.46	125.537	3.99	3.72	1.46	
7397.00	86.860	165.960	6920.39	333.89	-262.20	264.01	1702054.27	14354223.15	39°31'40.4843"N	80°46'53.0739"W	372.09	134.803	5.73	5.61	1.21	
7492.00	89.970	164.900	6923.02	428.56	-354.10	287.89	1702078.15	14354131.28	39°31'39.5755"N	80°46'52.7719"W	456.36	140.888	3.46	3.27	-1.12	
7586.00	89.880	164.880	6923.14	522.34	-444.85	312.40	1702102.64	14354040.57	39°31'38.6780"N	80°46'52.4620"W	543.58	144.921	0.10	-0.10	-0.02	
7681.00	90.310	164.990	6922.99	617.12	-536.58	337.09	1702127.32	14353948.87	39°31'37.7708"N	80°46'52.1498"W	633.68	147.862	0.47	0.45	0.12	
7775.00	89.970	161.290	6922.76	711.03	-626.52	364.35	1702154.57	14353858.96	39°31'36.8812"N	80°46'51.8047"W	724.76	149.820	3.95	-0.36	-3.94	

RECEIVED
Office of Oil and Gas
JUN 23 2023
WV Department of
Environmental Protection



Actual Wellpath Report

Forster Unit 1H AWP Proj: 22041'
Page 5 of 13



REFERENCE WELLPATH IDENTIFICATION			
Operator	ANTERO RESOURCES CORPORATION	Well	Forster Unit 1H
Field	Tyler	API	47-095-02803-0000
Facility	Beech Run Pad	Wellbore	Forster Unit 1H AWB
Slot	Slot F		

WELLPATH DATA (242 stations)																
MD [ft]	Inclination [°]	Azimuth [°]	TVD [ft]	Vert Sect [ft]	North [ft]	East [ft]	Grid East [US ft]	Grid North [US ft]	Latitude	Longitude	Closure Dist [ft]	Closure Dir [°]	DLS ["/100ft]	Build Rate ["/100ft]	Turn Rate ["/100ft]	Comments
7870.00	90.000	162.220	6922.78	806.02	-716.75	394.09	1702184.30	14353768.78	39°31'35.9888"N	80°46'51.4279"W	817.94	151.197	0.98	0.03	0.98	
7965.00	90.030	160.810	6922.76	901.02	-806.84	424.21	1702214.41	14353678.72	39°31'35.0976"N	80°46'51.0464"W	911.56	152.266	1.48	0.03	-1.48	
8060.00	90.060	162.730	6922.68	996.01	-897.07	453.93	1702244.12	14353588.53	39°31'34.2051"N	80°46'50.6699"W	1005.38	153.160	2.02	0.03	2.02	
8154.00	88.770	159.970	6923.64	1089.99	-986.12	483.98	1702274.16	14353499.51	39°31'33.3243"N	80°46'50.2892"W	1098.49	153.859	3.24	-1.37	-2.94	
8249.00	90.650	159.210	6924.12	1184.95	-1075.15	517.11	1702307.27	14353410.52	39°31'32.4436"N	80°46'49.8692"W	1193.04	154.314	2.13	1.98	-0.80	
8344.00	88.710	160.560	6924.65	1279.93	-1164.35	549.78	1702339.93	14353321.36	39°31'31.5612"N	80°46'49.4551"W	1287.62	154.724	2.49	-2.04	1.42	
8439.00	90.490	158.530	6925.32	1374.89	-1253.35	582.97	1702373.11	14353232.39	39°31'30.6808"N	80°46'49.0342"W	1382.29	155.055	2.84	1.87	-2.14	
8533.00	88.920	156.940	6925.80	1468.73	-1340.33	618.59	1702408.71	14353145.44	39°31'29.8203"N	80°46'48.5824"W	1476.19	155.226	2.38	-1.67	-1.69	
8627.00	91.260	160.730	6925.65	1562.64	-1427.97	652.52	1702442.63	14353057.84	39°31'28.9533"N	80°46'48.1522"W	1569.99	155.442	4.74	2.49	4.03	
8722.00	89.940	156.650	6924.66	1657.53	-1516.45	687.03	1702477.13	14352969.39	39°31'28.0780"N	80°46'47.7145"W	1664.82	155.627	4.51	-1.39	-4.29	
8816.00	90.090	157.560	6924.63	1751.32	-1603.04	723.60	1702513.68	14352882.84	39°31'27.2213"N	80°46'47.2505"W	1758.79	155.706	0.98	0.16	0.97	
8911.00	90.310	160.260	6924.30	1846.24	-1691.67	757.78	1702547.85	14352794.24	39°31'26.3446"N	80°46'46.8171"W	1853.64	155.870	2.85	0.23	2.84	
9006.00	89.750	157.110	6924.25	1941.15	-1780.16	792.31	1702582.36	14352705.79	39°31'25.4691"N	80°46'46.3793"W	1948.52	156.007	3.37	-0.59	-3.32	
9100.00	90.150	160.390	6924.33	2035.07	-1867.76	826.37	1702616.41	14352618.23	39°31'24.6026"N	80°46'45.9473"W	2042.40	156.133	3.52	0.43	3.49	
9195.00	89.350	163.800	6924.75	2130.04	-1958.14	855.58	1702645.60	14352527.88	39°31'23.7086"N	80°46'45.5775"W	2136.90	156.398	3.69	-0.84	3.59	
9289.00	90.340	163.190	6925.00	2223.94	-2048.27	882.28	1702672.30	14352437.79	39°31'22.8172"N	80°46'45.2395"W	2230.20	156.696	1.24	1.05	-0.65	
9384.00	89.420	161.350	6925.20	2318.92	-2138.75	911.21	1702701.22	14352347.34	39°31'21.9222"N	80°46'44.8732"W	2324.77	156.924	2.17	-0.97	-1.94	
9479.00	90.830	163.760	6924.99	2413.87	-2229.37	939.69	1702729.68	14352256.76	39°31'21.0259"N	80°46'44.5126"W	2419.32	157.144	2.94	1.48	2.54	
9574.00	89.690	163.430	6924.56	2508.77	-2320.50	966.52	1702756.50	14352165.66	39°31'20.1246"N	80°46'44.1731"W	2513.74	157.388	1.25	-1.20	-0.35	
9669.00	93.510	168.500	6921.91	2603.33	-2412.58	989.54	1702779.51	14352073.62	39°31'19.2140"N	80°46'43.8822"W	2607.63	157.699	6.68	4.02	5.34	
9764.00	96.780	164.710	6913.39	2697.46	-2504.59	1011.44	1702801.41	14351981.64	39°31'18.3040"N	80°46'43.6056"W	2701.11	158.009	5.26	3.44	-3.99	
9858.00	90.490	161.710	6907.43	2791.14	-2594.35	1038.53	1702828.49	14351891.92	39°31'17.4163"N	80°46'43.2627"W	2794.49	158.183	7.41	-6.69	-3.19	
9953.00	89.600	163.000	6907.35	2886.11	-2684.88	1067.33	1702857.27	14351801.43	39°31'16.5209"N	80°46'42.8981"W	2889.25	158.321	1.65	-0.94	1.36	
10047.00	90.650	164.290	6907.15	2980.01	-2775.07	1093.80	1702883.73	14351711.27	39°31'15.6289"N	80°46'42.5632"W	2982.85	158.488	1.77	1.12	1.37	
10142.00	90.430	163.720	6906.25	3074.87	-2866.39	1119.97	1702909.90	14351619.99	39°31'14.7257"N	80°46'42.2320"W	3077.42	158.658	0.64	-0.23	-0.60	
10237.00	88.150	163.650	6907.43	3169.75	-2957.55	1146.66	1702936.57	14351528.87	39°31'13.8241"N	80°46'41.8944"W	3172.05	158.808	2.40	-2.40	-0.07	
10331.00	92.370	167.040	6907.00	3263.45	-3048.46	1170.43	1702960.33	14351438.00	39°31'12.9250"N	80°46'41.5939"W	3265.42	158.996	5.76	4.49	3.61	
10426.00	89.290	162.170	6905.63	3358.21	-3140.00	1195.64	1702985.53	14351346.49	39°31'12.0197"N	80°46'41.2751"W	3359.93	159.154	6.06	-3.24	-5.13	
10521.00	87.480	164.060	6908.31	3453.10	-3230.86	1223.22	1703013.10	14351255.67	39°31'11.1210"N	80°46'40.9260"W	3454.66	159.263	2.75	-1.91	1.99	
10615.00	89.850	163.190	6910.50	3546.96	-3321.01	1249.71	1703039.58	14351165.55	39°31'10.2293"N	80°46'40.5908"W	3548.37	159.379	2.69	2.52	-0.93	

RECEIVED
Office of Oil and Gas
JUN 23 2023
WV Department of
Environmental Protection



Actual Wellpath Report

Forster Unit 1H AWP Proj: 22041'

Page 6 of 13



REFERENCE WELLPATH IDENTIFICATION				
Operator	ANTERO RESOURCES CORPORATION		Well	Forster Unit 1H
Field	Tyler		API	47-095-02803-0000
Facility	Beech Run Pad		Wellbore	Forster Unit 1H AWP
Slot	Slot F			

WELLPATH DATA (242 stations)																
MD [ft]	Inclination [°]	Azimuth [°]	TVD [ft]	Vert Sect [ft]	North [ft]	East [ft]	Grid East [US ft]	Grid North [US ft]	Latitude	Longitude	Closure Dist [ft]	Closure Dir [°]	DLS [°/100ft]	Build Rate [°/100ft]	Turn Rate [°/100ft]	Comments
10710.00	85.380	159.260	6914.45	3641.84	-3410.84	1280.24	1703070.10	14351075.75	39°31'9.3408"N	80°46'40.2041"W	3643.19	159.427	6.26	-4.71	-4.14	
10805.00	89.940	161.150	6918.33	3736.72	-3500.13	1312.37	1703102.22	14350986.51	39°31'8.4576"N	80°46'39.7969"W	3738.08	159.446	5.20	4.80	1.99	
10899.00	89.630	160.590	6918.68	3830.72	-3588.93	1343.18	1703133.01	14350897.73	39°31'7.5791"N	80°46'39.4066"W	3832.05	159.481	0.68	-0.33	-0.60	
10994.00	89.570	160.430	6919.34	3925.71	-3678.49	1374.87	1703164.70	14350808.21	39°31'6.6932"N	80°46'39.0050"W	3927.03	159.506	0.18	-0.06	-0.17	
11089.00	90.620	158.360	6919.19	4020.67	-3767.41	1408.30	1703198.11	14350719.33	39°31'5.8136"N	80°46'38.5812"W	4022.02	159.504	2.44	1.11	-2.18	
11184.00	89.510	159.560	6919.08	4115.61	-3856.07	1442.41	1703232.20	14350630.70	39°31'4.9365"N	80°46'38.1488"W	4117.01	159.491	1.72	-1.17	1.26	
11278.00	89.260	159.360	6920.09	4209.57	-3944.09	1475.39	1703265.17	14350542.72	39°31'4.0658"N	80°46'37.7308"W	4211.01	159.490	0.34	-0.27	-0.21	
11373.00	89.750	160.460	6920.91	4304.54	-4033.30	1508.02	1703297.79	14350453.54	39°31'3.1833"N	80°46'37.3173"W	4306.00	159.500	1.27	0.52	1.16	
11467.00	90.770	160.490	6920.48	4398.54	-4121.90	1539.43	1703329.19	14350364.98	39°31'2.3069"N	80°46'36.9192"W	4399.99	159.520	1.09	1.09	0.03	
11562.00	89.600	159.590	6920.17	4493.52	-4211.19	1571.86	1703361.61	14350275.73	39°31'1.4236"N	80°46'36.5082"W	4494.98	159.531	1.55	-1.23	-0.95	
11657.00	89.050	158.110	6921.29	4588.45	-4299.78	1606.14	1703395.87	14350187.17	39°31'0.5472"N	80°46'36.0737"W	4589.96	159.517	1.66	-0.58	-1.56	
11752.00	90.950	161.100	6921.29	4683.40	-4388.81	1639.24	1703428.96	14350098.18	39°30'59.6665"N	80°46'35.6542"W	4684.95	159.519	3.73	2.00	3.15	
11847.00	89.350	159.990	6921.05	4778.40	-4478.38	1670.88	1703460.58	14350008.64	39°30'58.7804"N	80°46'35.2533"W	4779.93	159.540	2.05	-1.68	-1.17	
11941.00	89.510	159.900	6921.98	4872.38	-4566.68	1703.11	1703492.80	14349920.38	39°30'57.9070"N	80°46'34.8448"W	4873.92	159.547	0.20	0.17	-0.10	
12036.00	89.970	160.830	6922.41	4967.37	-4656.15	1735.03	1703524.71	14349830.94	39°30'57.0219"N	80°46'34.4403"W	4968.91	159.563	1.09	0.48	0.98	
12131.00	89.690	159.630	6922.69	5062.36	-4745.55	1767.16	1703556.83	14349741.58	39°30'56.1376"N	80°46'34.0332"W	5063.90	159.575	1.30	-0.29	-1.26	
12225.00	89.970	159.920	6922.97	5156.34	-4833.75	1799.66	1703589.31	14349653.41	39°30'55.2650"N	80°46'33.6213"W	5157.90	159.579	0.43	0.30	0.31	
12320.00	89.510	159.460	6923.40	5251.31	-4922.84	1832.63	1703622.28	14349564.35	39°30'54.3837"N	80°46'33.2034"W	5252.90	159.581	0.68	-0.48	-0.48	
12414.00	89.820	160.060	6923.95	5345.29	-5011.04	1865.15	1703654.78	14349476.20	39°30'53.5112"N	80°46'32.7913"W	5346.89	159.584	0.72	0.33	0.64	
12509.00	90.000	159.820	6924.10	5440.27	-5100.27	1897.74	1703687.35	14349387.00	39°30'52.6285"N	80°46'32.3784"W	5441.89	159.590	0.32	0.19	-0.25	
12604.00	89.720	159.360	6924.33	5535.24	-5189.31	1930.87	1703720.47	14349297.99	39°30'51.7477"N	80°46'31.9585"W	5536.89	159.590	0.57	-0.29	-0.48	
12699.00	90.280	159.570	6924.33	5630.21	-5278.27	1964.19	1703753.78	14349209.07	39°30'50.8676"N	80°46'31.5361"W	5631.89	159.588	0.63	0.59	0.22	
12794.00	90.090	160.390	6924.03	5725.19	-5367.53	1996.71	1703786.29	14349119.84	39°30'49.9847"N	80°46'31.1240"W	5726.89	159.595	0.89	-0.20	0.86	
12888.00	89.350	160.610	6924.49	5819.19	-5456.14	2028.09	1703817.66	14349031.27	39°30'49.1082"N	80°46'30.7265"W	5820.87	159.609	0.82	-0.79	0.23	
12983.00	89.380	161.170	6925.54	5914.18	-5545.90	2059.19	1703848.74	14348941.55	39°30'48.2203"N	80°46'30.3325"W	5915.85	159.630	0.59	0.03	0.59	
13078.00	89.510	159.670	6926.46	6009.17	-5635.40	2091.03	1703880.56	14348852.09	39°30'47.3350"N	80°46'29.9292"W	6010.83	159.643	1.58	0.14	-1.58	
13172.00	89.720	159.460	6927.09	6103.14	-5723.48	2123.84	1703913.37	14348764.04	39°30'46.4636"N	80°46'29.5133"W	6104.83	159.641	0.32	0.22	-0.22	
13267.00	88.920	159.810	6928.22	6198.10	-5812.53	2156.90	1703946.41	14348675.02	39°30'45.5826"N	80°46'29.0943"W	6199.82	159.641	0.92	-0.84	0.37	
13362.00	89.110	160.620	6929.85	6293.08	-5901.91	2189.05	1703978.55	14348585.68	39°30'44.6985"N	80°46'28.6870"W	6294.80	159.650	0.88	0.20	0.85	
13456.00	89.110	160.370	6931.31	6387.06	-5990.51	2220.43	1704009.92	14348497.12	39°30'43.8221"N	80°46'28.2894"W	6388.78	159.662	0.27	0.00	-0.27	

RECEIVED
Office of Oil and Gas
JUN 23 2023
WV Department of
Environmental Protection



Actual Wellpath Report

Forster Unit 1H AWP Proj: 22041'
Page 7 of 13



REFERENCE WELLPATH IDENTIFICATION			
Operator	ANTERO RESOURCES CORPORATION	Well	Forster Unit 1H
Field	Tyler	API	47-095-02803-0000
Facility	Beech Run Pad	Wellbore	Forster Unit 1H AWB
Slot	Slot F		

WELLPATH DATA (242 stations)																
MD [ft]	Inclination [°]	Azimuth [°]	TVD [ft]	Vert Sect [ft]	North [ft]	East [ft]	Grid East [US ft]	Grid North [US ft]	Latitude	Longitude	Closure Dist [ft]	Closure Dir [°]	DLS ["/100ft]	Build Rate ["/100ft]	Turn Rate ["/100ft]	Comments
13551.00	88.550	160.310	6933.25	6482.04	-6079.95	2252.39	1704041.86	14348407.71	39°30'42.9373"N	80°46'27.8846"W	6483.75	159.672	0.59	-0.59	-0.06	
13646.00	89.480	159.900	6934.89	6577.01	-6169.26	2284.71	1704074.17	14348318.43	39°30'42.0538"N	80°46'27.4750"W	6578.73	159.678	1.07	0.98	-0.43	
13741.00	89.380	159.470	6935.83	6671.98	-6258.35	2317.69	1704107.14	14348229.38	39°30'41.1725"N	80°46'27.0571"W	6673.73	159.679	0.46	-0.11	-0.45	
13836.00	89.380	159.650	6936.86	6766.95	-6347.36	2350.87	1704140.30	14348140.40	39°30'40.2919"N	80°46'26.6366"W	6768.72	159.677	0.19	0.00	0.19	
13931.00	88.460	159.150	6938.65	6861.89	-6436.27	2384.29	1704173.71	14348051.53	39°30'39.4124"N	80°46'26.2131"W	6863.70	159.673	1.10	-0.97	-0.53	
14025.00	91.420	159.380	6938.75	6955.84	-6524.17	2417.56	1704206.97	14347963.66	39°30'38.5428"N	80°46'25.7914"W	6957.69	159.668	3.16	3.15	0.24	
14120.00	89.320	162.270	6938.13	7050.82	-6613.89	2448.76	1704238.16	14347873.98	39°30'37.6554"N	80°46'25.3962"W	7052.65	159.683	3.76	-2.21	3.04	
14215.00	89.510	159.770	6939.10	7145.81	-6703.71	2479.65	1704269.04	14347784.20	39°30'36.7668"N	80°46'25.0049"W	7147.62	159.701	2.64	0.20	-2.63	
14310.00	89.940	162.510	6939.56	7240.80	-6793.60	2510.36	1704299.73	14347694.34	39°30'35.8777"N	80°46'24.6160"W	7242.58	159.720	2.92	0.45	2.88	
14405.00	90.150	162.160	6939.49	7335.77	-6884.12	2539.19	1704328.55	14347603.86	39°30'34.9823"N	80°46'24.2512"W	7337.48	159.754	0.43	0.22	-0.37	
14499.00	91.050	161.150	6938.50	7429.76	-6973.34	2568.77	1704358.12	14347514.68	39°30'34.0998"N	80°46'23.8766"W	7431.42	159.778	1.44	0.96	-1.07	
14594.00	89.050	157.560	6938.42	7524.70	-7062.22	2602.26	1704391.59	14347425.83	39°30'33.2206"N	80°46'23.4522"W	7526.40	159.772	4.33	-2.11	-3.78	
14689.00	90.000	162.870	6939.21	7619.65	-7151.57	2634.40	1704423.72	14347336.51	39°30'32.3366"N	80°46'23.0450"W	7621.36	159.778	5.68	1.00	5.59	
14783.00	90.680	161.920	6938.65	7713.62	-7241.17	2662.83	1704452.14	14347246.95	39°30'31.4504"N	80°46'22.6851"W	7715.26	159.810	1.24	0.72	-1.01	
14878.00	89.230	162.010	6938.72	7808.60	-7331.50	2692.24	1704481.54	14347156.66	39°30'30.5569"N	80°46'22.3128"W	7810.19	159.836	1.53	-1.53	0.09	
14973.00	89.630	161.640	6939.67	7903.59	-7421.75	2721.87	1704511.16	14347066.44	39°30'29.6642"N	80°46'21.9377"W	7905.12	159.860	0.57	0.42	-0.39	
15067.00	90.520	161.540	6939.54	7997.58	-7510.94	2751.56	1704540.84	14346977.29	39°30'28.7820"N	80°46'21.5618"W	7999.08	159.880	0.95	0.95	-0.11	
15162.00	90.280	162.580	6938.88	8092.56	-7601.32	2780.82	1704570.08	14346886.94	39°30'27.8880"N	80°46'21.1914"W	8094.01	159.906	1.12	-0.25	1.09	
15256.00	89.080	157.950	6939.41	8186.52	-7689.77	2812.55	1704601.80	14346798.53	39°30'27.0130"N	80°46'20.7894"W	8187.98	159.910	5.09	-1.28	-4.93	
15351.00	89.940	161.610	6940.22	8281.48	-7778.90	2845.38	1704634.62	14346709.44	39°30'26.1313"N	80°46'20.3735"W	8282.96	159.908	3.96	0.91	3.85	
15445.00	89.230	160.170	6940.90	8375.48	-7867.71	2876.15	1704665.38	14346620.66	39°30'25.2528"N	80°46'19.9838"W	8376.94	159.919	1.71	-0.76	-1.53	
15540.00	90.430	160.710	6941.18	8470.47	-7957.23	2907.96	1704697.17	14346531.18	39°30'24.3673"N	80°46'19.5809"W	8471.93	159.925	1.39	1.26	0.57	
15635.00	89.050	157.290	6941.61	8565.40	-8045.90	2941.99	1704731.19	14346442.54	39°30'23.4900"N	80°46'19.1495"W	8566.90	159.915	3.88	-1.45	-3.60	
15729.00	89.540	161.610	6942.77	8659.33	-8133.89	2974.98	1704764.17	14346354.58	39°30'22.6196"N	80°46'18.7315"W	8660.87	159.910	4.62	0.52	4.60	
15824.00	89.020	161.330	6943.96	8754.32	-8223.96	3005.17	1704794.34	14346264.55	39°30'21.7287"N	80°46'18.3493"W	8755.83	159.927	0.62	-0.55	-0.29	
15919.00	89.570	161.760	6945.13	8849.31	-8314.07	3035.24	1704824.40	14346174.48	39°30'20.8373"N	80°46'17.9686"W	8850.78	159.944	0.73	0.58	0.45	
16013.00	89.660	161.800	6945.76	8943.30	-8403.35	3064.63	1704853.78	14346085.23	39°30'19.9542"N	80°46'17.5965"W	8944.73	159.964	0.10	0.10	0.04	
16108.00	88.980	161.500	6946.89	9038.28	-8493.51	3094.53	1704883.67	14345995.11	39°30'19.0623"N	80°46'17.2179"W	9039.68	159.981	0.78	-0.72	-0.32	
16202.00	88.920	161.120	6948.61	9132.27	-8582.54	3124.65	1704913.78	14345906.11	39°30'18.1817"N	80°46'16.8365"W	9133.64	159.995	0.41	-0.06	-0.40	
16297.00	89.140	161.280	6950.22	9227.25	-8672.46	3155.26	1704944.38	14345816.23	39°30'17.2922"N	80°46'16.4489"W	9228.61	160.007	0.29	0.23	0.17	

RECEIVED
Office of Oil and Gas
JUN 23 2023
WV Department of
Environmental Protection



Actual Wellpath Report

Forster Unit 1H AWP Proj: 22041'
Page 8 of 13



REFERENCE WELLPATH IDENTIFICATION				
Operator	ANTERO RESOURCES CORPORATION		Well	Forster Unit 1H
Field	Tyler		API	47-095-02803-0000
Facility	Beech Run Pad		Wellbore	Forster Unit 1H AWP
Slot	Slot F			

WELLPATH DATA (242 stations)																
MD [ft]	Inclination [°]	Azimuth [°]	TVD [ft]	Vert Sect [ft]	North [ft]	East [ft]	Grid East [US ft]	Grid North [US ft]	Latitude	Longitude	Closure Dist [ft]	Closure Dir [°]	DLS ["/100ft]	Build Rate ["/100ft]	Turn Rate ["/100ft]	Comments
16392.00	89.630	161.970	6951.24	9322.24	-8762.61	3185.21	1704974.31	14345726.12	39°30'16.4005"N	80°46'16.0698"W	9323.57	160.024	0.89	0.52	0.73	
16486.00	89.940	162.070	6951.60	9416.22	-8852.02	3214.22	1705003.32	14345636.74	39°30'15.5161"N	80°46'15.7028"W	9417.51	160.044	0.35	0.33	0.11	
16581.00	89.910	160.250	6951.72	9511.22	-8941.92	3244.90	1705033.98	14345546.87	39°30'14.6267"N	80°46'15.3141"W	9512.49	160.055	1.92	-0.03	-1.92	
16675.00	89.320	161.840	6952.35	9605.21	-9030.82	3275.43	1705064.50	14345458.01	39°30'13.7474"N	80°46'14.9275"W	9606.47	160.065	1.80	-0.63	1.69	
16770.00	89.420	161.910	6953.40	9700.20	-9121.10	3304.98	1705094.04	14345367.76	39°30'12.8544"N	80°46'14.5534"W	9701.41	160.082	0.13	0.11	0.07	
16865.00	89.480	161.710	6954.31	9795.18	-9211.35	3334.64	1705123.68	14345277.55	39°30'11.9617"N	80°46'14.1780"W	9796.37	160.099	0.22	0.06	-0.21	
16959.00	89.260	161.670	6955.34	9889.17	-9300.59	3364.17	1705153.20	14345188.35	39°30'11.0790"N	80°46'13.8042"W	9890.33	160.114	0.24	-0.23	-0.04	
17054.00	89.420	162.530	6956.44	9984.14	-9390.98	3393.36	1705182.38	14345097.99	39°30'10.1848"N	80°46'13.4347"W	9985.26	160.133	0.92	0.17	0.91	
17148.00	89.720	161.750	6957.14	10078.12	-9480.45	3422.19	1705211.20	14345008.56	39°30'9.2999"N	80°46'13.0698"W	10079.20	160.152	0.89	0.32	-0.83	
17243.00	89.510	162.630	6957.78	10173.10	-9570.89	3451.25	1705240.25	14344918.15	39°30'8.4053"N	80°46'12.7021"W	10174.14	160.171	0.95	-0.22	0.93	
17338.00	89.110	162.100	6958.92	10268.06	-9661.42	3480.03	1705269.01	14344827.66	39°30'7.5098"N	80°46'12.3379"W	10269.06	160.191	0.70	-0.42	-0.56	
17432.00	89.750	160.060	6959.86	10362.05	-9750.33	3510.50	1705299.48	14344738.79	39°30'6.6303"N	80°46'11.9520"W	10363.04	160.199	2.27	0.68	-2.17	
17526.00	89.600	161.530	6960.39	10456.05	-9839.10	3541.42	1705330.38	14344650.06	39°30'5.7522"N	80°46'11.5605"W	10457.03	160.204	1.57	-0.16	1.56	
17621.00	90.090	160.750	6960.65	10551.05	-9929.00	3572.13	1705361.08	14344560.19	39°30'4.8630"N	80°46'11.1717"W	10552.02	160.213	0.97	0.52	-0.82	
17716.00	89.880	161.910	6960.67	10646.04	-10018.99	3602.54	1705391.48	14344470.23	39°30'3.9727"N	80°46'10.7867"W	10647.00	160.223	1.24	-0.22	1.22	
17810.00	89.420	161.740	6961.25	10740.03	-10108.30	3631.86	1705420.79	14344380.96	39°30'3.0893"N	80°46'10.4155"W	10740.96	160.237	0.52	-0.49	-0.18	
17905.00	89.540	161.960	6962.11	10835.02	-10198.57	3661.45	1705450.37	14344290.72	39°30'2.1964"N	80°46'10.0410"W	10835.92	160.251	0.26	0.13	0.23	
18000.00	89.450	161.680	6962.95	10930.00	-10288.83	3691.09	1705479.99	14344200.51	39°30'1.3036"N	80°46'9.6658"W	10930.88	160.265	0.31	-0.09	-0.29	
18095.00	89.480	161.420	6963.83	11024.99	-10378.94	3721.16	1705510.05	14344110.43	39°30'0.4123"N	80°46'9.2853"W	11025.85	160.276	0.28	0.03	-0.27	
18189.00	89.910	161.820	6964.34	11118.99	-10468.14	3750.80	1705539.67	14344021.26	39°29'59.5299"N	80°46'8.9101"W	11119.82	160.287	0.62	0.46	0.43	
18284.00	89.480	161.620	6964.84	11213.98	-10558.35	3780.59	1705569.46	14343931.09	39°29'58.6376"N	80°46'8.5329"W	11214.79	160.299	0.50	-0.45	-0.21	
18378.00	90.400	161.530	6964.94	11307.97	-10647.53	3810.30	1705599.16	14343841.95	39°29'57.7555"N	80°46'8.1568"W	11308.77	160.310	0.98	0.98	-0.10	
18473.00	89.780	162.260	6964.79	11402.96	-10737.82	3839.82	1705628.67	14343751.69	39°29'56.8623"N	80°46'7.7832"W	11403.73	160.323	1.01	-0.65	0.77	
18567.00	89.350	161.810	6965.50	11496.94	-10827.24	3868.82	1705657.65	14343662.31	39°29'55.9778"N	80°46'7.4163"W	11497.69	160.337	0.66	-0.46	-0.48	
18662.00	89.720	161.770	6966.27	11591.93	-10917.48	3898.50	1705687.32	14343572.11	39°29'55.0852"N	80°46'7.0406"W	11592.65	160.349	0.39	0.39	-0.04	
18757.00	89.750	161.590	6966.71	11686.92	-11007.66	3928.36	1705717.17	14343481.96	39°29'54.1932"N	80°46'6.6626"W	11687.63	160.360	0.19	0.03	-0.19	
18851.00	90.030	161.880	6966.89	11780.91	-11096.92	3957.82	1705746.62	14343392.73	39°29'53.3102"N	80°46'6.2897"W	11781.60	160.371	0.43	0.30	0.31	
18946.00	90.340	161.890	6966.59	11875.90	-11187.21	3987.36	1705776.15	14343302.48	39°29'52.4171"N	80°46'5.9159"W	11876.57	160.383	0.33	0.33	0.01	
19040.00	89.540	161.800	6966.69	11969.89	-11276.53	4016.65	1705805.42	14343213.19	39°29'51.5335"N	80°46'5.5452"W	11970.53	160.394	0.86	-0.85	-0.10	
19135.00	89.320	161.760	6967.63	12064.87	-11366.77	4046.35	1705835.11	14343122.99	39°29'50.6410"N	80°46'5.1693"W	12065.50	160.405	0.24	-0.23	-0.04	

RECEIVED
Office of Oil and Gas
JUN 23 2023
WV Department of
Environmental Protection



Actual Wellpath Report

Forster Unit 1H AWP Proj: 22041'
Page 9 of 13



REFERENCE WELLPATH IDENTIFICATION			
Operator	ANTERO RESOURCES CORPORATION	Well	Forster Unit 1H
Field	Tyler	API	47-095-02803-0000
Facility	Beech Run Pad	Wellbore	Forster Unit 1H AWB
Slot	Slot F		

WELLPATH DATA (242 stations)																
MD [ft]	Inclination [°]	Azimuth [°]	TVD [ft]	Vert Sect [ft]	North [ft]	East [ft]	Grid East [US ft]	Grid North [US ft]	Latitude	Longitude	Closure Dist [ft]	Closure Dir [°]	DLS ["/100ft]	Build Rate ["/100ft]	Turn Rate ["/100ft]	Comments
19230.00	90.860	161.890	6967.48	12159.86	-11457.02	4075.98	1705864.73	14343032.77	39°29'49.7482"N	80°46'4.7942"W	12160.47	160.416	1.63	1.62	0.14	
19325.00	90.000	161.750	6966.77	12254.85	-11547.28	4105.62	1705894.36	14342942.55	39°29'48.8554"N	80°46'4.4191"W	12255.44	160.427	0.92	-0.91	-0.15	
19419.00	90.030	161.990	6966.74	12348.84	-11636.61	4134.87	1705923.60	14342853.26	39°29'47.9718"N	80°46'4.0489"W	12349.41	160.438	0.26	0.03	0.26	
19514.00	89.540	160.840	6967.10	12443.83	-11726.65	4165.15	1705953.86	14342763.25	39°29'47.0811"N	80°46'3.6657"W	12444.39	160.446	1.32	-0.52	-1.21	
19608.00	89.050	160.760	6968.26	12537.82	-11815.42	4196.06	1705984.76	14342674.52	39°29'46.2030"N	80°46'3.2743"W	12538.38	160.448	0.53	-0.52	-0.09	
19703.00	89.690	161.590	6969.30	12632.82	-11905.33	4226.71	1706015.40	14342584.64	39°29'45.3136"N	80°46'2.8863"W	12633.37	160.454	1.10	0.67	0.87	
19798.00	89.780	161.700	6969.74	12727.81	-11995.50	4256.63	1706045.31	14342494.51	39°29'44.4217"N	80°46'2.5076"W	12728.35	160.463	0.15	0.09	0.12	
19892.00	89.630	161.680	6970.23	12821.80	-12084.74	4286.16	1706074.83	14342405.31	39°29'43.5389"N	80°46'2.1339"W	12822.32	160.472	0.16	-0.16	-0.02	
19987.00	89.780	161.550	6970.71	12916.79	-12174.89	4316.12	1706104.78	14342315.20	39°29'42.6472"N	80°46'1.7547"W	12917.30	160.480	0.21	0.16	-0.14	
20082.00	89.970	161.330	6970.92	13011.79	-12264.94	4346.36	1706135.00	14342225.17	39°29'41.7564"N	80°46'1.3719"W	13012.29	160.487	0.31	0.20	-0.23	
20176.00	89.880	161.910	6971.05	13105.78	-12354.15	4376.00	1706164.63	14342136.00	39°29'40.8740"N	80°46'0.9968"W	13106.27	160.495	0.62	-0.10	0.62	
20271.00	89.600	161.730	6971.48	13200.77	-12444.41	4405.64	1706194.26	14342045.78	39°29'39.9812"N	80°46'0.6217"W	13201.25	160.505	0.35	-0.29	-0.19	
20365.00	89.260	160.940	6972.41	13294.76	-12533.46	4435.72	1706224.33	14341956.77	39°29'39.1003"N	80°46'0.2409"W	13295.23	160.511	0.91	-0.36	-0.84	
20459.00	89.450	160.770	6973.47	13388.76	-12622.25	4466.55	1706255.14	14341868.01	39°29'38.2219"N	80°45'59.8507"W	13389.22	160.513	0.27	0.20	-0.18	
20554.00	89.630	160.220	6974.23	13483.75	-12711.80	4498.27	1706286.85	14341778.50	39°29'37.3361"N	80°45'59.4490"W	13484.22	160.513	0.61	0.19	-0.58	
20649.00	89.540	160.550	6974.92	13578.74	-12801.28	4530.16	1706318.73	14341689.05	39°29'36.4509"N	80°45'59.0452"W	13579.22	160.512	0.36	-0.09	0.35	
20743.00	89.850	160.660	6975.42	13672.74	-12889.95	4561.37	1706349.93	14341600.42	39°29'35.5738"N	80°45'58.6500"W	13673.21	160.513	0.35	0.33	0.12	
20838.00	88.950	160.110	6976.42	13767.73	-12979.43	4593.26	1706381.80	14341510.98	39°29'34.6886"N	80°45'58.2462"W	13768.21	160.512	1.11	-0.95	-0.58	
20932.00	89.140	161.030	6977.98	13861.71	-13068.06	4624.53	1706413.06	14341422.38	39°29'33.8118"N	80°45'57.8503"W	13862.19	160.512	1.00	0.20	0.98	
21026.00	88.920	160.600	6979.57	13955.70	-13156.83	4655.41	1706443.93	14341333.65	39°29'32.9337"N	80°45'57.4593"W	13956.18	160.514	0.51	-0.23	-0.46	
21121.00	89.050	160.510	6981.26	14050.68	-13246.39	4687.03	1706475.54	14341244.11	39°29'32.0476"N	80°45'57.0589"W	14051.16	160.514	0.17	0.14	-0.09	
21216.00	89.260	160.770	6982.66	14145.67	-13336.01	4718.52	1706507.01	14341154.53	39°29'31.1611"N	80°45'56.6603"W	14146.15	160.515	0.35	0.22	0.27	
21310.00	89.260	160.580	6983.87	14239.66	-13424.71	4749.63	1706538.11	14341065.87	39°29'30.2837"N	80°45'56.2665"W	14240.14	160.516	0.20	0.00	-0.20	
21405.00	89.170	160.920	6985.17	14334.65	-13514.39	4780.94	1706569.41	14340976.23	39°29'29.3965"N	80°45'55.8700"W	14335.13	160.518	0.37	-0.09	0.36	
21499.00	89.260	160.840	6986.46	14428.64	-13603.19	4811.73	1706600.19	14340887.46	39°29'28.5181"N	80°45'55.4802"W	14429.12	160.520	0.13	0.10	-0.09	
21594.00	89.140	160.620	6987.79	14523.63	-13692.86	4843.08	1706631.52	14340797.82	39°29'27.6310"N	80°45'55.0834"W	14524.11	160.522	0.26	-0.13	-0.23	
21688.00	89.050	161.010	6989.27	14617.62	-13781.63	4873.97	1706662.40	14340709.09	39°29'26.7529"N	80°45'54.6924"W	14618.10	160.524	0.43	-0.10	0.41	
21783.00	89.380	160.540	6990.57	14712.61	-13871.32	4905.24	1706693.66	14340619.43	39°29'25.8656"N	80°45'54.2964"W	14713.09	160.525	0.60	0.35	-0.49	
21877.00	89.140	160.420	6991.79	14806.59	-13959.91	4936.65	1706725.06	14340530.88	39°29'24.9892"N	80°45'53.8987"W	14807.08	160.525	0.29	-0.26	-0.13	
21972.00	89.480	159.590	6992.93	14901.57	-14049.18	4969.13	1706757.52	14340441.65	39°29'24.1062"N	80°45'53.4874"W	14902.07	160.522	0.94	0.36	-0.87	

RECEIVED
 Office of Oil and Gas
 JUN 23 2023
 WV Department of
 Environmental Protection



Actual Wellpath Report

Forster Unit 1H AWP Proj: 22041'

Page 10 of 13



REFERENCE WELLPATH IDENTIFICATION			
Operator	ANTERO RESOURCES CORPORATION	Well	Forster Unit 1H
Field	Tyler	API	47-095-02803-0000
Facility	Beech Run Pad	Wellbore	Forster Unit 1H AWB
Slot	Slot F		

WELLPATH DATA (242 stations) † = interpolated, ‡ = extrapolated station																
MD [ft]	Inclination [°]	Azimuth [°]	TVD [ft]	Vert Sect [ft]	North [ft]	East [ft]	Grid East [US ft]	Grid North [US ft]	Latitude	Longitude	Closure Dist [ft]	Closure Dir [°]	DLS [°/100ft]	Build Rate [°/100ft]	Turn Rate [°/100ft]	Comments
22016.00	89.110	160.460	6993.47	14945.56	-14090.53	4984.16	1706772.55	14340400.31	39°29'23.6971"N	80°45'53.2971"W	14946.07	160.520	2.15	-0.84	1.98	
22041.00‡	89.110	160.460	6993.86	14970.56	-14114.09	4992.52	1706780.91	14340376.77	39°29'23.4641"N	80°45'53.1912"W	14971.06	160.520	0.00	0.00	0.00	Projected MD at TD: 22041'

HOLE & CASING SECTIONS - Ref Wellbore: Forster Unit 1H AWB Ref Wellpath: Forster Unit 1H AWP Proj: 22041'									
String/Diameter	Start MD [ft]	End MD [ft]	Interval [ft]	Start TVD [ft]	End TVD [ft]	Start N/S [ft]	Start E/W [ft]	End N/S [ft]	End E/W [ft]
20in Conductor	25.50	126.00	100.50	25.50	126.00	0.00	0.00	-0.13	0.11
17.5in Open Hole	126.00	988.00	862.00	126.00	987.99	-0.13	0.11	-0.83	2.61
13.375in Casing Surface	25.50	968.00	942.50	25.50	967.99	0.00	0.00	-0.83	2.73
12.25in Open Hole	988.00	3369.00	2381.00	987.99	3368.78	-0.83	2.61	-17.40	-12.80
9.625in Casing Intermediate	25.50	3349.00	3323.50	25.50	3348.78	0.00	0.00	-17.21	-12.60
8.75in Open Hole	3369.00	6026.00	2657.00	3368.78	5983.07	-17.40	-12.80	424.13	74.96
8.5in Open Hole	6026.00	22041.00	16015.00	5983.07	6993.86	424.13	74.96	-14114.09	4992.52
5.5in Casing Production	25.50	22021.00	21995.50	25.50	6993.55	0.00	0.00	-14095.24	4985.83

RECEIVED
 Office of Oil and Gas
 JUN 23 2023
 WV Department of
 Environmental Protection



Actual Wellpath Report

Forster Unit 1H AWP Proj: 22041'

Page 11 of 13



REFERENCE WELLPATH IDENTIFICATION			
Operator	ANTERO RESOURCES CORPORATION	Well	Forster Unit 1H
Field	Tyler	API	47-095-02803-0000
Facility	Beech Run Pad	Wellbore	Forster Unit 1H AWB
Slot	Slot F		

TARGETS								
Name	TVD [ft]	North [ft]	East [ft]	Grid East [US ft]	Grid North [US ft]	Latitude	Longitude	Shape
Forster Unit 1H POE Rev-3	6887.00	-48.32	214.13	1702004.41	14354436.94	39°31'42.5993"N	80°46'53.7039"W	point
Forster Unit 1H AZI Rev-3	6915.00	-529.62	323.34	1702113.59	14353955.83	39°31'37.8399"N	80°46'52.3249"W	point
Forster Unit 1H BHL Rev-3	6915.00	-14769.77	5228.17	1707016.46	14339721.34	39°29'16.9776"N	80°45'50.2075"W	point
Forster Unit 1H BHL Rev-4	6915.00	-14128.06	5007.14	1706795.52	14340362.80	39°29'23.3256"N	80°45'53.0052"W	point
Forster Unit 1H LP Rev-3	6915.00	-243.53	249.00	1702039.27	14354241.81	39°31'40.6692"N	80°46'53.2649"W	point
Forster Unit 1H 50' L/R Hard Line Rev-2	7250.00	-7328.84	2665.24	1704454.55	14347159.32	39°30'30.5839"N	80°46'22.6572"W	rectangle
2D Rectangle 14382.5 x 100.								

RECEIVED
 Office of Oil and Gas
 JUN 23 2023
 WV Department of
 Environmental Protection



Actual Wellpath Report

Forster Unit 1H AWP Proj: 22041'

Page 12 of 13



REFERENCE WELLPATH IDENTIFICATION			
Operator	ANTERO RESOURCES CORPORATION	Well	Forster Unit 1H
Field	Tyler	API	47-095-02803-0000
Facility	Beech Run Pad	Wellbore	Forster Unit 1H AWB
Slot	Slot F		

WELLPATH COMPOSITION - Ref Wellbore: Forster Unit 1H AWB Ref Wellpath: Forster Unit 1H AWP Proj: 22041'					
Start MD [ft]	End MD [ft]	Positional Uncertainty Model	Log Name/Comment	Wellbore	Survey Date
25.50	900.00	Gyrodatta 2015 - GC+WIR+DPIPE	01 Gyrodatta MS Gyro <17-1/2"> (100'-900')	Forster Unit 1H AWB	10/25/2022
900.00	1090.00	Gyrodatta 2015 - GC+WIR+DPIPE	02 Gyrodatta MS Gyro <12-1/4"> (900')(1000'-1090')	Forster Unit 1H AWB	10/28/2022
1090.00	3293.00	BH NaviTrak (2019) (Axial Corr+HRGM)	03 APS EM <12-1/4"> (1090')(1133'-3293')	Forster Unit 1H AWB	10/25/2022
3293.00	5950.00	BH NaviTrak (2019) (Axial Corr+HRGM)	04 APS EM <8-3/4"> (3293')(3399'-5950')	Forster Unit 1H AWB	12/15/2022
5950.00	22041.00	BH AutoTrak Curve/eXpress (2019) (HRGM, Short spacing)	05 BH AT Curve <8-1/2"> (5950')(5979'-22016')	Forster Unit 1H AWB	12/15/2022

RECEIVED
 Office of Oil and Gas
 JUN 23 2023
 NV Department of
 Environmental Protection



Actual Wellpath Report

Forster Unit 1H AWP Proj: 22041'

Page 13 of 13



REFERENCE WELLPATH IDENTIFICATION			
Operator	ANTERO RESOURCES CORPORATION	Well	Forster Unit 1H
Field	Tyler	API	47-095-02803-0000
Facility	Beech Run Pad	Wellbore	Forster Unit 1H AWB
Slot	Slot F		

COMMENTS
<p>Wellpath general comments API: 47-095-02803-0000 BH Job #: 111519970 Rig: H&P 317 Duration: 12/19/2022-12/23/2022 Gyrodatta MS Gyro <17-1/2"> (100'-900') Gyrodatta MS Gyro <12-1/4"> (900')(1000'-1090') APS EM <12-1/4"> (1090')(1133'-3293') APS EM <8-3/4"> (3293')(3399'-5950') BH AT Curve <8-1/2"> (5950')(5979'-22016') Sycamore: 6644' MD Middlesex: 6789' MD Burkett: 6942' MD Tully: 7012' MD Marcellus POE: 7201' MD Projected MD at TD: 22041'</p>

RECEIVED
Office of Oil and Gas
JUN 23 2023
WV Department of
Environmental Protection