



ANTERO RESOURCES CORPORATION

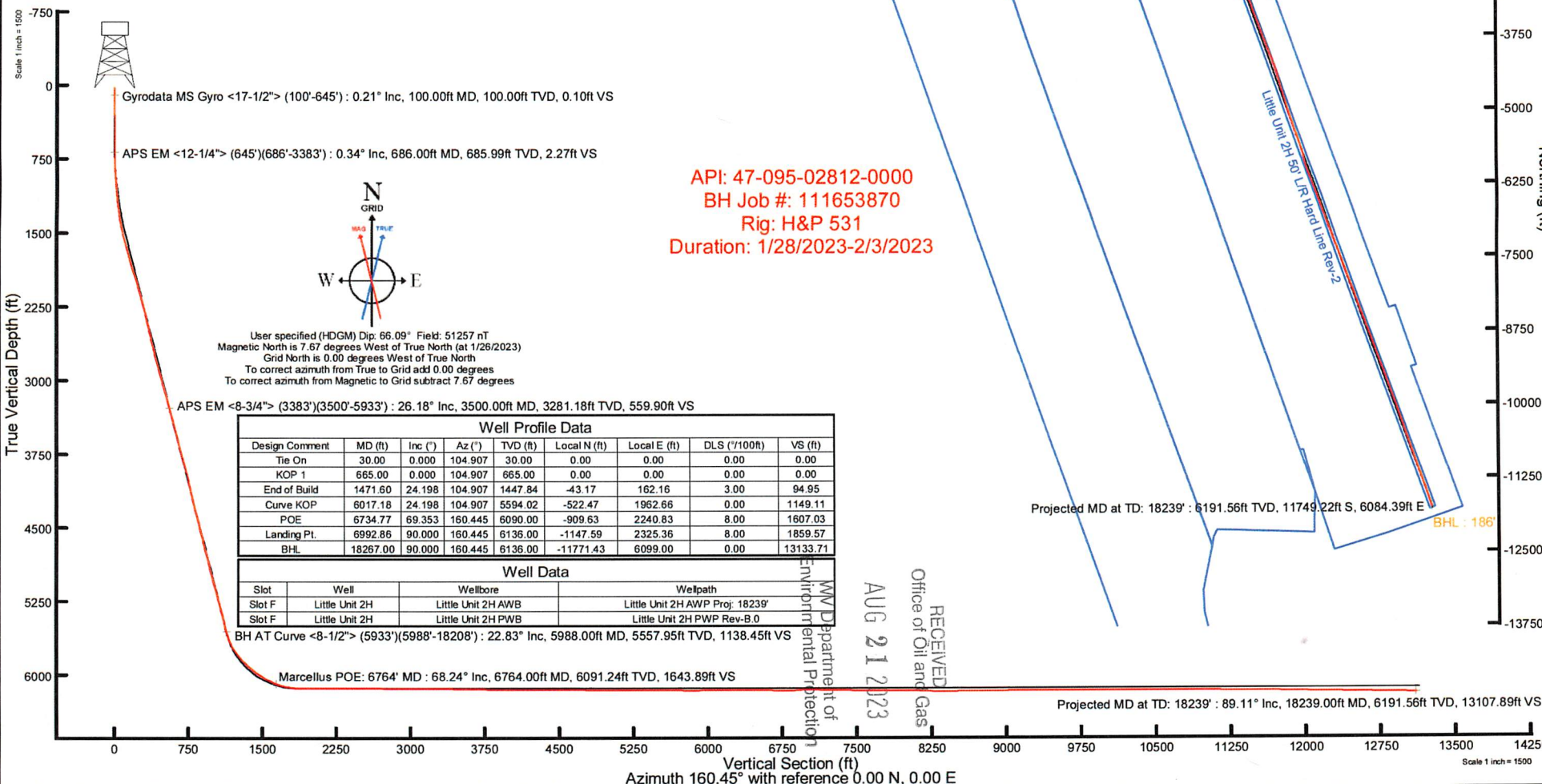


Location: Tyler County, WV
 Field: Tyler
 Facility: Wrigley Pad

Slot: Slot F
 Well: Little Unit 2H
 Wellbore: Little Unit 2H PWB

Plot reference wellpath is Little Unit 2H PWP Rev-B.0	Grid System: NAD27 / UTM Zone 17 North, US feet
True vertical depths are referenced to H&P 531 (RKB)	North Reference: Grid north
Reference wellpath measured depths are referenced to H&P 531 (RKB)	Scale: True distance
H&P 531 (RKB) to Mean Sea Level: 967 feet	Coordinates are in feet referenced to Slot
Mean Sea Level to Ground level (At Slot: Slot F): -937 feet	Depths are in feet
Offset wellpath MDs are referenced to each path's default MD datum	Created by: edsanyar on 2023-02-06; Database: WA_MPL_EASTERNUS_Defn

Location Information					
Facility Name	Grid East (US ft)	Grid North (US ft)	Latitude	Longitude	
Wrigley Pad	1638329.430	14315291.560	39°25'16.2920"N	81°00'26.6070"W	
Slot	Local N (ft)	Local E (ft)	Grid East (US ft)	Grid North (US ft)	Latitude
Slot F	-23.68	71.10	1638400.500	14315267.890	39°25'16.0580"N
Slot F					81°00'25.7011"W
Comment	Little Unit 2H				30ft
H&P 531 (RKB) to Ground level (At Slot: Slot F)					-937ft
Mean Sea Level to Ground level (At Slot: Slot F)					967ft
H&P 531 (RKB) to Mean Sea Level					





Actual Wellpath Report

Little Unit 2H AWP Proj: 18239'

Page 1 of 11



REFERENCE WELLPATH IDENTIFICATION

Operator	ANTERO RESOURCES CORPORATION	Well	Little Unit 2H
Field	Tyler	API	47-095-02812-0000
Facility	Wrigley Pad	Wellbore	Little Unit 2H AWB
Slot	Slot F		

REPORT SETUP INFORMATION

Projection System	NAD27 / UTM Zone 17 North, US feet	Software System	WellArchitect® 6.0
North Reference	Grid	User	Edsaryar
Scale	0.999600	Report Generated	2/6/2023 at 6:43:16 PM
Convergence at slot	0.00°	Database	WA_MPL_EASTERNUS_Defn

WELLPATH LOCATION

	Local coordinates		Grid coordinates		Geographic coordinates	
	North[ft]	East[ft]	Easting[US ft]	Northing[US ft]	Latitude	Longitude
Slot Location	-23.68	71.10	1638400.50	14315267.89	39°25'16.0580"N	81°00'25.7011"W
Facility Reference Pt			1638329.43	14315291.56	39°25'16.2920"N	81°00'26.6070"W
Field Reference Pt			0.00	0.00	0°00'0.0000"	85°29'19.3013"W

WELLPATH DATUM

Calculation method	Minimum curvature	H&P 531 (RKB) to Facility Vertical Datum	967.00ft
Horizontal Reference Pt	Slot	H&P 531 (RKB) to Mean Sea Level	967.00ft
Vertical Reference Pt	H&P 531 (RKB)	H&P 531 (RKB) to Ground Level at Slot (Slot F)	30.00ft
MD Reference Pt	H&P 531 (RKB)	Section Origin	N 0.00, E 0.00 ft
Field Vertical Reference	Mean Sea Level	Section Azimuth	160.45°

RECEIVED
 Office of Oil and Gas
 AUG 21 2023
 WV Department of
 Environmental Protection



Actual Wellpath Report

Little Unit 2H AWP Proj: 18239'
Page 2 of 11



REFERENCE WELLPATH IDENTIFICATION			
Operator	ANTERO RESOURCES CORPORATION	Well	Little Unit 2H
Field	Tyler	API	47-095-02812-0000
Facility	Wrigley Pad	Wellbore	Little Unit 2H AWB
Slot	Slot F		

WELLPATH DATA (205 stations) † = interpolated, ‡ = extrapolated station																
MD (ft)	Inclination (°)	Azimuth (°)	TVD (ft)	Vert Sect (ft)	North (ft)	East (ft)	Grid East [US ft]	Grid North [US ft]	Latitude	Longitude	Closure Dist (ft)	Closure Dir (°)	DLS (°/100ft)	Build Rate (°/100ft)	Turn Rate (°/100ft)	Comments
0.00†	0.000	200.510	0.00	0.00	0.00	0.00	1638400.50	14315267.89	39°25'16.0580"N	81°00'25.7011"W	0.00	0.000	0.00	0.00	0.00	
30.00	0.000	200.510	30.00	0.00	0.00	0.00	1638400.50	14315267.89	39°25'16.0580"N	81°00'25.7011"W	0.00	0.000	0.00	0.00	0.00	
100.00	0.210	200.510	100.00	0.10	-0.12	-0.04	1638400.46	14315267.77	39°25'16.0569"N	81°00'25.7016"W	0.13	200.510	0.30	0.30	0.00	Gyrodata MS Gyro <17-1/2"> (100'-645')
200.00	0.330	133.390	200.00	0.49	-0.49	0.10	1638400.60	14315267.40	39°25'16.0532"N	81°00'25.6998"W	0.50	168.444	0.31	0.12	-67.12	
300.00	0.370	128.970	300.00	1.03	-0.89	0.56	1638401.06	14315267.00	39°25'16.0492"N	81°00'25.6939"W	1.05	147.817	0.05	0.04	-4.42	
400.00	0.110	168.130	400.00	1.40	-1.19	0.83	1638401.33	14315266.70	39°25'16.0463"N	81°00'25.6905"W	1.45	145.010	0.29	-0.26	39.16	
500.00	0.240	183.950	500.00	1.68	-1.49	0.84	1638401.34	14315266.40	39°25'16.0433"N	81°00'25.6904"W	1.71	150.696	0.14	0.13	15.82	
600.00	0.140	149.610	600.00	2.00	-1.80	0.88	1638401.38	14315266.09	39°25'16.0402"N	81°00'25.6898"W	2.01	153.906	0.15	-0.10	-34.34	
645.00	0.150	168.860	644.99	2.11	-1.91	0.92	1638401.42	14315265.98	39°25'16.0392"N	81°00'25.6893"W	2.12	154.205	0.11	0.02	42.78	
686.00	0.340	137.930	685.99	2.27	-2.05	1.01	1638401.51	14315265.84	39°25'16.0378"N	81°00'25.6881"W	2.29	153.692	0.55	0.46	-75.44	APS EM <12-1/4"> (645')(686'-3383')
774.00	1.270	120.340	773.99	3.26	-2.74	2.03	1638402.53	14315265.15	39°25'16.0310"N	81°00'25.6752"W	3.41	143.438	1.08	1.06	-19.99	
863.00	3.480	107.560	862.90	5.65	-4.05	5.46	1638405.96	14315263.84	39°25'16.0180"N	81°00'25.6315"W	6.80	126.592	2.54	2.48	-14.36	
953.00	6.050	107.390	952.59	10.14	-6.29	12.59	1638413.08	14315261.60	39°25'15.9958"N	81°00'25.5406"W	14.08	116.564	2.86	2.86	-0.19	
1043.00	8.650	104.260	1041.84	16.76	-9.38	23.68	1638424.17	14315258.51	39°25'15.9654"N	81°00'25.3993"W	25.47	111.611	2.92	2.89	-3.48	
1137.00	11.440	99.640	1134.39	25.24	-12.68	39.72	1638440.21	14315255.21	39°25'15.9327"N	81°00'25.1949"W	41.70	107.708	3.09	2.97	-4.91	
1232.00	15.070	100.190	1226.84	35.97	-16.45	61.17	1638461.65	14315251.45	39°25'15.8955"N	81°00'24.9216"W	63.34	105.048	3.82	3.82	0.58	
1326.00	18.770	98.110	1316.76	49.06	-20.74	88.18	1638488.65	14315247.15	39°25'15.8531"N	81°00'24.5774"W	90.59	103.237	3.99	3.94	-2.21	
1421.00	22.520	98.070	1405.64	64.59	-25.46	121.34	1638521.79	14315242.44	39°25'15.8065"N	81°00'24.1549"W	123.98	101.848	3.95	3.95	-0.04	
1515.00	24.970	100.170	1491.68	82.78	-31.49	158.70	1638559.13	14315236.42	39°25'15.7470"N	81°00'23.6789"W	161.79	101.222	2.76	2.61	2.23	
1610.00	26.380	102.480	1577.30	103.91	-39.59	199.04	1638599.46	14315228.32	39°25'15.6669"N	81°00'23.1648"W	202.94	101.249	1.82	1.48	2.43	
1705.00	26.330	102.040	1662.43	126.14	-48.54	240.25	1638640.66	14315219.37	39°25'15.5784"N	81°00'22.6396"W	245.11	101.423	0.21	-0.05	-0.46	
1799.00	26.480	104.340	1746.62	148.75	-58.08	280.95	1638681.33	14315209.83	39°25'15.4842"N	81°00'22.1211"W	286.89	101.681	1.10	0.16	2.45	
1894.00	27.250	107.520	1831.37	173.67	-69.88	322.21	1638722.58	14315198.04	39°25'15.3676"N	81°00'21.5953"W	329.70	102.236	1.72	0.81	3.35	
1988.00	28.020	107.330	1914.65	199.89	-82.93	363.81	1638764.16	14315184.99	39°25'15.2386"N	81°00'21.0652"W	373.14	102.842	0.82	0.82	-0.20	
2083.00	27.050	107.120	1998.89	226.19	-95.94	405.76	1638806.09	14315171.99	39°25'15.1101"N	81°00'20.5307"W	416.94	103.303	1.03	-1.02	-0.22	
2178.00	26.530	105.670	2083.69	251.32	-108.03	446.83	1638847.15	14315159.91	39°25'14.9907"N	81°00'20.0073"W	459.70	103.591	0.88	-0.55	-1.53	
2273.00	25.220	105.600	2169.17	275.21	-119.20	486.75	1638887.06	14315148.74	39°25'14.8802"N	81°00'19.4986"W	501.14	103.761	1.38	-1.38	-0.07	
2367.00	23.250	106.310	2254.88	297.61	-129.80	523.85	1638924.14	14315138.14	39°25'14.7755"N	81°00'19.0259"W	539.69	103.916	2.12	-2.10	0.76	
2462.00	23.010	104.940	2342.24	319.11	-139.85	559.79	1638960.06	14315128.09	39°25'14.6762"N	81°00'18.5679"W	576.99	104.027	0.62	-0.25	-1.44	
2557.00	22.820	103.370	2429.74	339.64	-148.90	595.65	1638995.91	14315119.05	39°25'14.5868"N	81°00'18.1110"W	613.98	104.035	0.67	-0.20	-1.65	

RECEIVED
 Office of Oil and Gas
 AUG 21 2023
 WV Department of
 Environmental Protection



Actual Wellpath Report

Little Unit 2H AWP Proj: 18239'
Page 3 of 11



REFERENCE WELLPATH IDENTIFICATION			
Operator	ANTERO RESOURCES CORPORATION	Well	Little Unit 2H
Field	Tyler	API	47-095-02812-0000
Facility	Wrigley Pad	Wellbore	Little Unit 2H AWB
Slot	Slot F		

WELLPATH DATA (205 stations)																
MD [ft]	Inclination [°]	Azimuth [°]	TVD [ft]	Vert Sect [ft]	North [ft]	East [ft]	Grid East [US ft]	Grid North [US ft]	Latitude	Longitude	Closure Dist [ft]	Closure Dir [°]	DLS [°/100ft]	Build Rate [°/100ft]	Turn Rate [°/100ft]	Comments
2651.00	22.750	101.530	2516.41	358.93	-156.75	631.19	1639031.44	14315111.21	39°25'14.5093"N	81°00'17.6581"W	650.36	103.946	0.76	-0.07	-1.96	
2746.00	23.610	100.810	2603.74	378.02	-163.99	667.88	1639068.11	14315103.97	39°25'14.4377"N	81°00'17.1906"W	687.72	103.795	0.95	0.91	-0.76	
2841.00	25.290	104.050	2690.22	398.87	-172.48	706.25	1639106.47	14315095.48	39°25'14.3538"N	81°00'16.7016"W	727.01	103.724	2.26	1.77	3.41	
2935.00	25.090	101.290	2775.29	420.20	-181.26	745.28	1639145.48	14315086.70	39°25'14.2671"N	81°00'16.2043"W	767.00	103.669	1.27	-0.21	-2.94	
3030.00	25.740	101.840	2861.09	441.27	-189.43	785.22	1639185.40	14315078.53	39°25'14.1863"N	81°00'15.6954"W	807.75	103.563	0.73	0.68	0.58	
3125.00	27.350	106.750	2946.08	464.94	-199.96	826.31	1639226.48	14315068.01	39°25'14.0823"N	81°00'15.1717"W	850.16	103.603	2.86	1.69	5.17	
3219.00	26.770	105.860	3029.79	489.99	-211.97	867.36	1639267.51	14315056.01	39°25'13.9636"N	81°00'14.6488"W	892.88	103.733	0.75	-0.62	-0.95	
3314.00	26.500	105.030	3114.71	514.41	-223.31	908.41	1639308.54	14315044.67	39°25'13.8515"N	81°00'14.1257"W	935.45	103.811	0.48	-0.28	-0.87	
3383.00	26.700	104.710	3176.41	531.88	-231.24	938.27	1639338.39	14315036.75	39°25'13.7732"N	81°00'13.7452"W	966.34	103.845	0.36	0.29	-0.46	
3500.00	26.180	101.270	3281.18	559.90	-242.96	989.00	1639389.11	14315025.03	39°25'13.6574"N	81°00'13.0987"W	1018.41	103.802	1.38	-0.44	-2.94	APS EM <8-3/4"> (3383')(3500'-5933')
3594.00	25.500	106.940	3365.79	582.56	-252.91	1028.70	1639428.79	14315015.08	39°25'13.5590"N	81°00'12.5928"W	1059.34	103.812	2.73	-0.72	6.03	
3689.00	24.740	107.970	3451.81	606.83	-265.00	1067.18	1639467.25	14315003.00	39°25'13.4395"N	81°00'12.1026"W	1099.59	103.945	0.92	-0.80	1.08	
3783.00	23.460	106.420	3537.61	629.80	-276.36	1103.84	1639503.89	14314991.64	39°25'13.3273"N	81°00'11.6355"W	1137.90	104.056	1.52	-1.36	-1.65	
3878.00	22.050	109.430	3625.22	652.13	-287.64	1138.79	1639538.84	14314980.37	39°25'13.2158"N	81°00'11.1900"W	1174.56	104.175	1.92	-1.48	3.17	
3972.00	22.310	108.900	3712.26	674.32	-299.28	1172.31	1639572.34	14314968.73	39°25'13.1007"N	81°00'10.7629"W	1209.91	104.321	0.35	0.28	-0.56	
4066.00	23.160	111.090	3798.96	697.46	-311.72	1206.44	1639606.46	14314956.30	39°25'12.9779"N	81°00'10.3280"W	1246.06	104.487	1.28	0.90	2.33	
4160.00	24.420	106.900	3884.98	721.04	-324.02	1242.28	1639642.29	14314944.00	39°25'12.8563"N	81°00'9.8713"W	1283.85	104.618	2.24	1.34	-4.46	
4257.00	23.780	104.990	3973.52	744.04	-334.90	1280.36	1639680.35	14314933.12	39°25'12.7487"N	81°00'9.3861"W	1323.44	104.658	1.04	-0.66	-1.97	
4352.00	22.910	101.290	4060.75	764.38	-343.48	1317.00	1639716.97	14314924.55	39°25'12.6640"N	81°00'8.9193"W	1361.05	104.617	1.79	-0.92	-3.89	
4446.00	21.080	103.590	4147.91	783.01	-351.03	1351.38	1639751.33	14314917.00	39°25'12.5893"N	81°00'8.4812"W	1396.22	104.561	2.15	-1.95	2.45	
4541.00	20.440	108.250	4236.74	802.52	-360.24	1383.74	1639783.68	14314907.79	39°25'12.4983"N	81°00'8.0688"W	1429.86	104.593	1.86	-0.67	4.91	
4636.00	20.600	113.300	4325.72	824.05	-372.05	1414.84	1639814.78	14314895.99	39°25'12.3816"N	81°00'7.6725"W	1462.94	104.733	1.87	0.17	5.32	
4731.00	21.590	109.680	4414.36	846.47	-384.55	1446.65	1639846.57	14314883.50	39°25'12.2581"N	81°00'7.2672"W	1496.89	104.886	1.72	1.04	-3.81	
4826.00	23.760	105.770	4502.02	868.59	-395.64	1481.53	1639881.44	14314872.41	39°25'12.1485"N	81°00'6.8227"W	1533.45	104.952	2.78	2.28	-4.12	
4921.00	24.590	100.910	4588.69	889.68	-404.58	1519.37	1639919.25	14314863.47	39°25'12.0601"N	81°00'6.3406"W	1572.31	104.911	2.27	0.87	-5.12	
5015.00	23.160	105.340	4674.65	910.17	-413.17	1556.40	1639956.28	14314854.88	39°25'11.9752"N	81°00'5.8687"W	1610.31	104.867	2.44	-1.52	4.71	
5109.00	23.020	110.630	4761.13	932.61	-424.54	1591.43	1639991.29	14314843.52	39°25'11.8629"N	81°00'5.4224"W	1647.09	104.937	2.21	-0.15	5.63	
5204.00	21.270	106.940	4849.13	954.84	-436.11	1625.30	1640025.15	14314831.96	39°25'11.7485"N	81°00'4.9908"W	1682.80	105.020	2.35	-1.84	-3.88	
5298.00	20.970	108.270	4936.81	975.29	-446.35	1657.59	1640057.42	14314821.72	39°25'11.6473"N	81°00'4.5794"W	1716.63	105.071	0.60	-0.32	1.41	
5393.00	24.650	109.710	5024.37	998.26	-458.36	1692.39	1640092.21	14314809.71	39°25'11.5286"N	81°00'4.1359"W	1753.36	105.154	3.92	3.87	1.52	

RECEIVED
Office of Oil and Gas
AUG 21 2023
WV Department of
Environmental Protection



Actual Wellpath Report

Little Unit 2H AWP Proj: 18239'
Page 4 of 11



REFERENCE WELLPATH IDENTIFICATION				
Operator	ANTERO RESOURCES CORPORATION		Well	Little Unit 2H
Field	Tyler		API	47-095-02812-0000
Facility	Wrigley Pad		Wellbore	Little Unit 2H AWB
Slot	Slot F			

WELLPATH DATA (205 stations) † = interpolated, ‡ = extrapolated station																
MD [ft]	Inclination [°]	Azimuth [°]	TVD [ft]	Vert Sect [ft]	North [ft]	East [ft]	Grid East [US ft]	Grid North [US ft]	Latitude	Longitude	Closure Dist [ft]	Closure Dir [°]	DLS ["/100ft]	Build Rate ["/100ft]	Turn Rate ["/100ft]	Comments
5488.00	25.210	105.070	5110.52	1022.30	-470.31	1730.58	1640130.39	14314797.77	39°25'11.4105"N	81°00'3.6493"W	1793.35	105.204	2.14	0.59	-4.88	
5583.00	30.000	103.390	5194.69	1046.72	-481.07	1773.25	1640173.04	14314787.01	39°25'11.3041"N	81°00'3.1056"W	1837.35	105.179	5.11	5.04	-1.77	
5677.00	28.820	100.490	5276.58	1070.84	-490.64	1818.39	1640218.16	14314777.45	39°25'11.2096"N	81°00'2.5304"W	1883.42	105.100	1.97	-1.26	-3.09	
5772.00	26.330	97.770	5360.78	1091.98	-497.66	1861.79	1640261.54	14314770.43	39°25'11.1402"N	81°00'1.9774"W	1927.16	104.965	2.94	-2.62	-2.86	
5867.00	23.630	99.090	5446.89	1110.78	-503.52	1901.47	1640301.21	14314764.58	39°25'11.0823"N	81°00'1.4718"W	1967.01	104.832	2.90	-2.84	1.39	
5933.00	23.550	108.240	5507.39	1125.20	-509.74	1927.07	1640326.79	14314758.36	39°25'11.0209"N	81°00'1.1457"W	1993.34	104.816	5.54	-0.12	13.86	
5988.00	22.830	108.070	5557.95	1138.45	-516.48	1947.64	1640347.36	14314751.61	39°25'10.9542"N	81°00'0.8834"W	2014.96	104.852	1.31	-1.31	-0.31	BH AT Curve <8-1/2"> (5933')(5988'-18208')
6083.00	25.820	124.320	5644.60	1166.45	-533.89	1982.30	1640382.00	14314734.22	39°25'10.7821"N	81°00'0.4419"W	2052.94	105.074	7.69	3.15	17.11	
6178.00	32.970	139.350	5727.43	1207.38	-565.25	2016.32	1640416.01	14314702.87	39°25'10.4722"N	81°00'0.0084"W	2094.05	105.660	10.76	7.53	15.82	
6273.00	39.520	146.170	5804.04	1260.87	-610.04	2050.03	1640449.71	14314658.10	39°25'10.0295"N	80°59'59.5788"W	2138.87	106.572	8.09	6.89	7.18	
6368.00	47.240	144.380	5873.04	1323.77	-663.58	2087.23	1640486.89	14314604.58	39°25'9.5004"N	80°59'59.1048"W	2190.18	107.637	8.23	8.13	-1.88	
6397.00†	48.486	143.759	5892.49	1344.40	-680.99	2099.85	1640499.51	14314587.17	39°25'9.3283"N	80°59'58.9440"W	2207.51	107.968	4.58	4.30	-2.14	Sycamore: 6397' MD
6462.00	51.290	142.450	5934.37	1391.84	-720.73	2129.70	1640529.34	14314547.45	39°25'8.9355"N	80°59'58.5637"W	2248.35	108.697	4.58	4.31	-2.01	
6551.00†	55.324	146.408	5987.55	1460.42	-778.79	2171.14	1640570.77	14314489.42	39°25'8.3617"N	80°59'58.0357"W	2306.59	109.733	5.77	4.53	4.45	Middlesex: 6551' MD
6557.00	55.600	146.660	5990.95	1465.21	-782.91	2173.86	1640573.49	14314485.30	39°25'8.3209"N	80°59'58.0010"W	2310.55	109.806	5.77	4.61	4.21	
6652.00	59.930	151.580	6041.63	1543.96	-851.87	2215.01	1640614.62	14314416.36	39°25'7.6394"N	80°59'57.4767"W	2373.17	111.036	6.32	4.56	5.18	
6712.00†	63.871	156.368	6069.90	1596.53	-899.42	2238.18	1640637.78	14314368.83	39°25'7.1694"N	80°59'57.1815"W	2412.14	111.893	9.63	6.57	7.98	Burkett: 6712' MD
6747.00	66.240	159.010	6084.66	1628.22	-928.77	2250.22	1640649.81	14314339.49	39°25'6.8793"N	80°59'57.0281"W	2434.36	112.428	9.63	6.77	7.55	
6756.00†	67.299	159.411	6088.21	1636.49	-936.51	2253.15	1640652.75	14314331.76	39°25'6.8029"N	80°59'56.9907"W	2440.03	112.570	12.46	11.77	4.45	Tully: 6756' MD
6764.00†	68.241	159.762	6091.24	1643.89	-943.45	2255.74	1640655.33	14314324.82	39°25'6.7343"N	80°59'56.9578"W	2445.08	112.697	12.46	11.78	4.39	Marcellus POE: 6764' MD
6794.00	71.780	161.040	6101.49	1672.08	-970.00	2265.19	1640664.78	14314298.28	39°25'6.4718"N	80°59'56.8373"W	2464.14	113.182	12.46	11.80	4.26	
6841.00	76.610	160.640	6114.29	1717.29	-1012.71	2280.03	1640679.61	14314255.59	39°25'6.0497"N	80°59'56.6483"W	2494.81	113.949	10.31	10.28	-0.85	
6888.00	78.540	160.630	6124.40	1763.18	-1056.01	2295.25	1640694.82	14314212.31	39°25'5.6218"N	80°59'56.4543"W	2526.52	114.706	4.11	4.11	-0.02	
6936.00	82.600	160.490	6132.27	1810.53	-1100.65	2311.00	1640710.57	14314167.68	39°25'5.1806"N	80°59'56.2536"W	2559.72	115.467	8.46	8.46	-0.29	
6983.00	86.770	160.400	6136.62	1857.31	-1144.74	2326.66	1640726.23	14314123.61	39°25'4.7448"N	80°59'56.0541"W	2593.03	116.198	8.87	8.87	-0.19	
7031.00	90.460	160.050	6137.78	1905.29	-1189.89	2342.90	1640742.45	14314078.48	39°25'4.2986"N	80°59'55.8472"W	2627.73	116.925	7.72	7.69	-0.73	
7126.00	89.850	160.060	6137.52	2000.29	-1279.19	2375.30	1640774.85	14313989.22	39°25'3.4160"N	80°59'55.4343"W	2697.85	118.304	0.64	-0.64	0.01	
7221.00	89.780	160.020	6137.83	2095.28	-1368.48	2407.73	1640807.26	14313899.96	39°25'2.5334"N	80°59'55.0211"W	2769.46	119.613	0.08	-0.07	-0.04	
7315.00	89.910	160.860	6138.08	2189.28	-1457.05	2439.20	1640838.72	14313811.42	39°25'1.6580"N	80°59'54.6202"W	2841.25	120.852	0.90	0.14	0.89	
7410.00	89.720	160.600	6138.39	2284.28	-1546.73	2470.55	1640870.06	14313721.78	39°25'0.7717"N	80°59'54.2207"W	2914.79	122.049	0.34	-0.20	-0.27	

RECEIVED
 Office of Oil and Gas
 AUG 21 2023
 WV Department of
 Environmental Protection



Actual Wellpath Report

Little Unit 2H AWP Proj: 18239'
Page 5 of 11



REFERENCE WELLPATH IDENTIFICATION			
Operator	ANTERO RESOURCES CORPORATION	Well	Little Unit 2H
Field	Tyler	API	47-095-02812-0000
Facility	Wrigley Pad	Wellbore	Little Unit 2H AWB
Slot	Slot F		

WELLPATH DATA (205 stations)																
MD [ft]	Inclination [°]	Azimuth [°]	TVD [ft]	Vert Sect [ft]	North [ft]	East [ft]	Grid East [US ft]	Grid North [US ft]	Latitude	Longitude	Closure Dist [ft]	Closure Dir [°]	DLS [°/100ft]	Build Rate [°/100ft]	Turn Rate [°/100ft]	Comments
7505.00	89.910	159.920	6138.70	2379.28	-1636.15	2502.64	1640902.13	14313632.40	39°24'59.8879"N	80°59'53.8119"W	2990.01	123.175	0.74	0.20	-0.72	
7600.00	89.880	160.340	6138.87	2474.28	-1725.49	2534.93	1640934.41	14313543.09	39°24'59.0049"N	80°59'53.4005"W	3066.46	124.243	0.44	-0.03	0.44	
7693.00	89.820	160.130	6139.11	2567.28	-1813.01	2566.38	1640965.85	14313455.61	39°24'58.1399"N	80°59'52.9999"W	3142.18	125.239	0.23	-0.06	-0.23	
7788.00	89.600	160.020	6139.60	2662.27	-1902.32	2598.75	1640998.21	14313366.33	39°24'57.2571"N	80°59'52.5874"W	3220.61	126.205	0.26	-0.23	-0.12	
7883.00	89.540	159.860	6140.31	2757.27	-1991.56	2631.34	1641030.78	14313277.13	39°24'56.3752"N	80°59'52.1722"W	3300.04	127.121	0.18	-0.06	-0.17	
7978.00	89.480	160.150	6141.12	2852.26	-2080.83	2663.82	1641063.25	14313187.90	39°24'55.4929"N	80°59'51.7584"W	3380.20	127.995	0.31	-0.06	0.31	
8073.00	89.540	160.050	6141.93	2947.26	-2170.15	2696.15	1641095.57	14313098.61	39°24'54.6100"N	80°59'51.3464"W	3461.04	128.831	0.12	0.06	-0.11	
8167.00	89.200	159.870	6142.97	3041.25	-2258.46	2728.36	1641127.77	14313010.34	39°24'53.7373"N	80°59'50.9361"W	3541.83	129.617	0.41	-0.36	-0.19	
8262.00	89.230	159.510	6144.27	3136.23	-2347.54	2761.33	1641160.72	14312921.29	39°24'52.8568"N	80°59'50.5160"W	3624.35	130.369	0.38	0.03	-0.38	
8356.00	90.890	158.880	6144.17	3230.20	-2435.41	2794.72	1641194.10	14312833.46	39°24'51.9884"N	80°59'50.0907"W	3706.98	131.070	1.89	1.77	-0.67	
8451.00	89.480	159.880	6143.86	3325.18	-2524.32	2828.18	1641227.54	14312744.59	39°24'51.1096"N	80°59'49.6644"W	3790.88	131.751	1.82	-1.48	1.05	
8545.00	89.290	159.680	6144.87	3419.17	-2612.52	2860.66	1641260.01	14312656.42	39°24'50.2378"N	80°59'49.2506"W	3874.10	132.404	0.29	-0.20	-0.21	
8640.00	89.290	159.780	6146.05	3514.15	-2701.63	2893.57	1641292.91	14312567.35	39°24'49.3571"N	80°59'48.8313"W	3958.73	133.035	0.11	0.00	0.11	
8734.00	88.980	159.780	6147.47	3608.14	-2789.83	2926.06	1641325.38	14312479.18	39°24'48.4854"N	80°59'48.4174"W	4042.89	133.635	0.33	-0.33	0.00	
8829.00	89.050	159.510	6149.10	3703.11	-2878.88	2959.10	1641358.41	14312390.17	39°24'47.6052"N	80°59'47.9965"W	4128.46	134.213	0.29	0.07	-0.28	
8924.00	89.230	159.030	6150.53	3798.08	-2967.72	2992.72	1641392.02	14312301.36	39°24'46.7272"N	80°59'47.5682"W	4214.70	134.760	0.54	0.19	-0.51	
9018.00	89.630	160.990	6151.46	3892.07	-3056.05	3024.85	1641424.13	14312213.07	39°24'45.8542"N	80°59'47.1589"W	4299.90	135.294	2.13	0.43	2.09	
9112.00	89.820	156.960	6151.91	3986.02	-3143.77	3058.57	1641457.84	14312125.38	39°24'44.9871"N	80°59'46.7293"W	4386.13	135.787	4.29	0.20	-4.29	
9207.00	88.890	158.370	6152.98	4080.90	-3231.64	3094.67	1641493.92	14312037.55	39°24'44.1187"N	80°59'46.2694"W	4474.42	136.240	1.78	-0.98	1.48	
9302.00	90.740	162.690	6153.29	4175.87	-3321.18	3126.32	1641525.57	14311948.05	39°24'43.2337"N	80°59'45.8662"W	4561.15	136.731	4.95	1.95	4.55	
9396.00	91.380	158.100	6151.55	4269.83	-3409.69	3157.85	1641557.08	14311859.57	39°24'42.3589"N	80°59'45.4646"W	4647.36	137.196	4.93	0.68	-4.88	
9491.00	88.710	159.740	6151.48	4364.78	-3498.32	3192.01	1641591.23	14311770.98	39°24'41.4829"N	80°59'45.0293"W	4735.74	137.621	3.30	-2.81	1.73	
9586.00	88.980	160.190	6153.39	4459.76	-3587.55	3224.55	1641623.76	14311681.78	39°24'40.6010"N	80°59'44.6148"W	4823.72	138.050	0.55	0.28	0.47	
9681.00	91.380	160.960	6153.09	4554.75	-3677.14	3256.14	1641655.33	14311592.23	39°24'39.7155"N	80°59'44.2124"W	4911.60	138.475	2.65	2.53	0.81	
9776.00	88.680	159.810	6153.04	4649.74	-3766.61	3288.03	1641687.21	14311502.79	39°24'38.8312"N	80°59'43.8062"W	4999.85	138.881	3.09	-2.84	-1.21	
9870.00	89.320	157.820	6154.68	4743.68	-3854.24	3321.99	1641721.16	14311415.20	39°24'37.9651"N	80°59'43.3735"W	5088.30	139.242	2.22	0.68	-2.12	
9965.00	88.280	158.910	6156.67	4838.60	-3942.53	3357.01	1641756.16	14311326.95	39°24'37.0925"N	80°59'42.9274"W	5178.13	139.586	1.59	-1.09	1.15	
10060.00	90.890	159.980	6157.36	4933.57	-4031.47	3390.36	1641789.50	14311238.04	39°24'36.2134"N	80°59'42.5026"W	5267.57	139.937	2.97	2.75	1.13	
10155.00	88.610	158.810	6157.78	5028.54	-4120.38	3423.79	1641822.92	14311149.16	39°24'35.3346"N	80°59'42.0768"W	5357.23	140.275	2.70	-2.40	-1.23	
10249.00	91.390	158.640	6157.78	5122.49	-4207.97	3457.90	1641857.01	14311061.61	39°24'34.6689"N	80°59'41.6423"W	5446.47	140.588	2.96	2.96	-0.18	

RECEIVED
 Office of Oil and Gas
 AUG 21 2023
 WV Department of
 Environmental Protection



Actual Wellpath Report

Little Unit 2H AWP Proj: 18239'
Page 6 of 11



REFERENCE WELLPATH IDENTIFICATION			
Operator	ANTERO RESOURCES CORPORATION	Well	Little Unit 2H
Field	Tyler	API	47-095-02812-0000
Facility	Wrigley Pad	Wellbore	Little Unit 2H AWB
Slot	Slot F		

WELLPATH DATA (205 stations)																
MD [ft]	Inclination [°]	Azimuth [°]	TVD [ft]	Vert Sect [ft]	North [ft]	East [ft]	Grid East [US ft]	Grid North [US ft]	Latitude	Longitude	Closure Dist [ft]	Closure Dir [°]	DLS [°/100ft]	Build Rate [°/100ft]	Turn Rate [°/100ft]	Comments
10344.00	90.060	160.170	6156.57	5217.46	-4296.89	3491.31	1641890.41	14310972.73	39°24'33.5901"N	80°59'41.2167"W	5536.47	140.905	2.13	-1.40	1.61	
10439.00	89.660	163.480	6156.81	5312.42	-4387.13	3520.94	1641920.02	14310882.52	39°24'32.6981"N	80°59'40.8393"W	5625.29	141.251	3.51	-0.42	3.48	
10533.00	89.750	163.970	6157.29	5406.27	-4477.37	3547.28	1641946.35	14310792.32	39°24'31.8063"N	80°59'40.5038"W	5712.27	141.611	0.53	0.10	0.52	
10628.00	89.230	163.410	6158.13	5501.11	-4568.54	3573.96	1641973.02	14310701.19	39°24'30.9052"N	80°59'40.1640"W	5800.41	141.964	0.80	-0.55	-0.59	
10723.00	91.790	163.090	6157.29	5595.99	-4659.50	3601.33	1642000.39	14310610.27	39°24'30.0062"N	80°59'39.8153"W	5889.02	142.299	2.72	2.69	-0.34	
10817.00	87.780	162.620	6157.64	5689.88	-4749.30	3629.04	1642028.08	14310520.50	39°24'29.1186"N	80°59'39.4624"W	5977.10	142.616	4.30	-4.27	-0.50	
10912.00	88.120	163.260	6161.04	5784.73	-4840.06	3656.89	1642055.92	14310429.77	39°24'28.2215"N	80°59'39.1076"W	6066.22	142.927	0.76	0.36	0.67	
11007.00	90.980	165.160	6161.79	5879.51	-4931.46	3682.74	1642081.75	14310338.41	39°24'27.3182"N	80°59'38.7784"W	6154.82	143.248	3.61	3.01	2.00	
11102.00	93.630	160.700	6157.96	5974.31	-5022.17	3710.59	1642109.59	14310247.74	39°24'26.4216"N	80°59'38.4237"W	6244.25	143.541	5.46	2.79	-4.69	
11197.00	89.750	161.850	6155.16	6069.24	-5112.09	3741.06	1642140.06	14310157.86	39°24'25.5329"N	80°59'38.0355"W	6334.74	143.803	4.26	-4.08	1.21	
11291.00	89.850	161.580	6155.49	6163.22	-5201.34	3770.56	1642169.54	14310068.64	39°24'24.6508"N	80°59'37.6598"W	6424.25	144.061	0.31	0.11	-0.29	
11386.00	89.690	161.320	6155.87	6258.20	-5291.40	3800.78	1642199.75	14309978.62	39°24'23.7606"N	80°59'37.2749"W	6514.97	144.311	0.32	-0.17	-0.27	
11480.00	89.780	161.230	6156.31	6352.19	-5380.43	3830.95	1642229.91	14309889.63	39°24'22.8807"N	80°59'36.8905"W	6604.94	144.548	0.14	0.10	-0.10	
11575.00	89.720	161.320	6156.72	6447.18	-5470.40	3861.45	1642260.40	14309799.69	39°24'21.9915"N	80°59'36.5021"W	6695.97	144.782	0.11	-0.06	0.09	
11670.00	89.820	161.360	6157.10	6542.17	-5560.40	3891.85	1642290.78	14309709.72	39°24'21.1019"N	80°59'36.1150"W	6787.09	145.011	0.11	0.11	0.04	
11764.00	87.540	161.140	6159.27	6636.13	-5649.38	3922.05	1642320.97	14309620.78	39°24'20.2224"N	80°59'35.7302"W	6877.36	145.230	2.44	-2.43	-0.23	
11859.00	87.260	162.620	6163.58	6731.00	-5739.58	3951.57	1642350.48	14309530.62	39°24'19.3309"N	80°59'35.3543"W	6968.33	145.453	1.58	-0.29	1.56	
11954.00	92.550	169.850	6163.74	6825.42	-5831.75	3974.15	1642373.05	14309438.48	39°24'18.4199"N	80°59'35.0668"W	7057.14	145.727	9.43	5.57	7.61	
12048.00	95.360	162.920	6157.24	6918.62	-5922.83	3996.20	1642395.09	14309347.44	39°24'17.5197"N	80°59'34.7859"W	7144.90	145.992	7.94	2.99	-7.37	
12143.00	88.980	161.350	6153.65	7013.46	-6013.14	4025.31	1642424.19	14309257.17	39°24'16.6271"N	80°59'34.4152"W	7236.08	146.201	6.92	-6.72	-1.65	
12238.00	89.570	159.310	6154.85	7108.45	-6102.58	4057.28	1642456.15	14309167.76	39°24'15.7431"N	80°59'34.0080"W	7328.23	146.382	2.24	0.62	-2.15	
12332.00	89.380	159.670	6155.71	7202.43	-6190.62	4090.21	1642489.07	14309079.76	39°24'14.8730"N	80°59'33.5885"W	7419.81	146.547	0.43	-0.20	0.38	
12428.00	88.800	159.520	6157.24	7298.41	-6280.58	4123.68	1642522.52	14308989.83	39°24'13.9838"N	80°59'33.1623"W	7513.35	146.712	0.62	-0.60	-0.16	
12523.00	88.950	159.840	6159.10	7393.38	-6369.65	4156.66	1642555.49	14308900.80	39°24'13.1034"N	80°59'32.7422"W	7605.94	146.873	0.37	0.16	0.34	
12618.00	88.800	159.310	6160.97	7488.35	-6458.66	4189.81	1642588.62	14308811.82	39°24'12.2236"N	80°59'32.3200"W	7698.62	147.028	0.58	-0.16	-0.56	
12712.00	88.920	158.930	6162.84	7582.31	-6546.47	4223.30	1642622.11	14308724.05	39°24'11.3557"N	80°59'31.8934"W	7790.55	147.173	0.42	0.13	-0.40	
12807.00	91.450	160.920	6162.53	7677.29	-6635.69	4255.91	1642654.70	14308634.87	39°24'10.4740"N	80°59'31.4782"W	7883.22	147.325	3.39	2.66	2.09	
12902.00	89.540	159.440	6161.71	7772.28	-6725.05	4288.12	1642686.89	14308545.54	39°24'9.5907"N	80°59'31.0680"W	7975.85	147.477	2.54	-2.01	-1.56	
12997.00	89.420	159.520	6162.57	7867.26	-6814.02	4321.42	1642720.18	14308456.61	39°24'8.7114"N	80°59'30.6439"W	8068.80	147.617	0.15	-0.13	0.08	
13091.00	89.690	159.260	6163.30	7961.24	-6902.00	4354.50	1642753.25	14308368.66	39°24'7.8418"N	80°59'30.2225"W	8160.84	147.752	0.40	0.29	-0.28	

RECEIVED
Office of Oil and Gas
AUG 21 2023
WV Department of
Environmental Protection



Actual Wellpath Report

Little Unit 2H AWP Proj: 18239'
Page 7 of 11



REFERENCE WELLPATH IDENTIFICATION			
Operator	ANTERO RESOURCES CORPORATION	Well	Little Unit 2H
Field	Tyler	API	47-095-02812-0000
Facility	Wrigley Pad	Wellbore	Little Unit 2H AWB
Slot	Slot F		

WELLPATH DATA (205 stations)																
MD [ft]	Inclination [°]	Azimuth [°]	TVD [ft]	Vert Sect [ft]	North [ft]	East [ft]	Grid East [US ft]	Grid North [US ft]	Latitude	Longitude	Closure Dist [ft]	Closure Dir [°]	DLS [°/100ft]	Build Rate [°/100ft]	Turn Rate [°/100ft]	Comments
13186.00	90.060	157.260	6163.51	8056.17	-6990.24	4389.69	1642788.42	14308280.46	39°24'6.9696"N	80°59'29.7743"W	8254.26	147.872	2.14	0.39	-2.11	
13281.00	87.290	158.440	6165.71	8151.03	-7078.19	4425.49	1642824.21	14308192.54	39°24'6.1003"N	80°59'29.3183"W	8347.80	147.985	3.17	-2.92	1.24	
13376.00	87.810	159.750	6169.77	8245.92	-7166.86	4459.36	1642858.07	14308103.91	39°24'5.2239"N	80°59'28.8870"W	8440.96	148.109	1.48	0.55	1.38	
13471.00	89.630	159.450	6171.89	8340.88	-7255.87	4492.46	1642891.16	14308014.93	39°24'4.3441"N	80°59'28.4654"W	8534.05	148.236	1.94	1.92	-0.32	
13566.00	90.550	159.210	6171.74	8435.86	-7344.76	4526.00	1642924.68	14307926.09	39°24'3.4656"N	80°59'28.0384"W	8627.29	148.358	1.00	0.97	-0.25	
13661.00	92.680	160.200	6169.06	8530.81	-7433.82	4558.93	1642957.60	14307837.06	39°24'2.5853"N	80°59'27.6189"W	8720.41	148.480	2.47	2.24	1.04	
13756.00	89.780	159.840	6167.02	8625.77	-7523.07	4591.38	1642990.04	14307747.85	39°24'1.7032"N	80°59'27.2057"W	8813.48	148.604	3.08	-3.05	-0.38	
13847.00	90.620	159.500	6166.71	8716.76	-7608.40	4623.00	1643021.64	14307662.55	39°24'0.8598"N	80°59'26.8030"W	8902.80	148.716	1.00	0.92	-0.37	
13942.00	89.510	158.970	6166.60	8811.74	-7697.23	4656.68	1643055.31	14307573.76	39°23'59.9818"N	80°59'26.3741"W	8996.22	148.827	1.29	-1.17	-0.56	
14038.00	90.460	161.250	6166.62	8907.73	-7787.49	4689.34	1643087.95	14307483.53	39°23'59.0897"N	80°59'25.9582"W	9090.38	148.945	2.57	0.99	2.37	
14134.00	91.380	159.050	6165.08	9003.71	-7877.77	4721.93	1643120.53	14307393.29	39°23'58.1974"N	80°59'25.5432"W	9184.55	149.062	2.48	0.96	-2.29	
14230.00	89.750	159.420	6164.14	9099.68	-7967.53	4755.96	1643154.55	14307303.57	39°23'57.3102"N	80°59'25.1098"W	9279.04	149.166	1.74	-1.70	0.39	
14324.00	89.420	158.420	6164.82	9193.64	-8055.23	4789.77	1643188.34	14307215.90	39°23'56.4433"N	80°59'24.6793"W	9371.69	149.264	1.12	-0.35	-1.06	
14419.00	91.910	161.220	6163.71	9288.62	-8144.38	4822.53	1643221.09	14307126.79	39°23'55.5622"N	80°59'24.2620"W	9465.08	149.369	3.94	2.62	2.95	
14513.00	90.490	159.690	6161.75	9382.59	-8232.94	4853.97	1643252.52	14307038.26	39°23'54.6869"N	80°59'23.8617"W	9557.32	149.477	2.22	-1.51	-1.63	
14608.00	89.050	159.840	6162.13	9477.58	-8322.07	4886.83	1643285.36	14306949.16	39°23'53.8059"N	80°59'23.4433"W	9650.80	149.578	1.52	-1.52	0.16	
14703.00	89.820	159.030	6163.06	9572.56	-8411.01	4920.20	1643318.72	14306860.26	39°23'52.9268"N	80°59'23.0183"W	9744.41	149.674	1.18	0.81	-0.85	
14798.00	89.940	159.500	6163.26	9667.54	-8499.86	4953.83	1643352.34	14306771.45	39°23'52.0487"N	80°59'22.5900"W	9838.09	149.766	0.51	0.13	0.49	
14892.00	90.090	159.210	6163.24	9761.52	-8587.82	4986.97	1643385.47	14306683.52	39°23'51.1792"N	80°59'22.1680"W	9930.79	149.856	0.35	0.16	-0.31	
14987.00	90.030	159.190	6163.14	9856.50	-8676.63	5020.71	1643419.19	14306594.75	39°23'50.3015"N	80°59'21.7384"W	10024.54	149.944	0.07	-0.06	-0.02	
15082.00	90.370	159.330	6162.81	9951.48	-8765.47	5054.35	1643452.82	14306505.94	39°23'49.4233"N	80°59'21.3100"W	10118.30	150.031	0.39	0.36	0.15	
15176.00	89.630	159.410	6162.81	10045.46	-8853.44	5087.47	1643485.92	14306418.00	39°23'48.5538"N	80°59'20.8883"W	10211.06	150.117	0.79	-0.79	0.09	
15271.00	90.000	161.170	6163.11	10140.45	-8942.87	5119.51	1643517.95	14306328.61	39°23'47.6699"N	80°59'20.4803"W	10304.58	150.210	1.89	0.39	1.85	
15366.00	89.510	160.440	6163.52	10235.45	-9032.59	5150.74	1643549.17	14306238.93	39°23'46.7831"N	80°59'20.0826"W	10397.97	150.306	0.93	-0.52	-0.77	
15461.00	89.850	160.550	6164.05	10330.45	-9122.14	5182.46	1643580.88	14306149.42	39°23'45.8981"N	80°59'19.6787"W	10491.49	150.398	0.38	0.36	0.12	
15555.00	89.970	160.450	6164.20	10424.45	-9210.75	5213.84	1643612.24	14306060.85	39°23'45.0223"N	80°59'19.2792"W	10584.04	150.488	0.17	0.13	-0.11	
15650.00	90.030	160.180	6164.20	10519.45	-9300.19	5245.84	1643644.23	14305971.43	39°23'44.1382"N	80°59'18.8717"W	10677.66	150.575	0.29	0.06	-0.28	
15745.00	89.750	160.140	6164.38	10614.45	-9389.56	5278.08	1643676.46	14305882.11	39°23'43.2549"N	80°59'18.4611"W	10771.35	150.659	0.30	-0.29	-0.04	
15840.00	90.710	160.900	6164.00	10709.44	-9479.11	5309.76	1643708.13	14305792.59	39°23'42.3697"N	80°59'18.0578"W	10864.95	150.744	1.29	1.01	0.80	
15934.00	89.450	160.500	6163.87	10803.44	-9567.83	5340.83	1643739.18	14305703.91	39°23'41.4929"N	80°59'17.6622"W	10957.55	150.829	1.41	-1.34	-0.43	

RECEIVED
Office of Oil and Gas
AUG 21 2023
WV Department of
Environmental Protection



Actual Wellpath Report

Little Unit 2H AWP Proj: 18239'

Page 8 of 11



REFERENCE WELLPATH IDENTIFICATION

Operator	ANTERO RESOURCES CORPORATION	Well	Little Unit 2H
Field	Tyler	API	47-095-02812-0000
Facility	Wrigley Pad	Wellbore	Little Unit 2H AWB
Slot	Slot F		

WELLPATH DATA (205 stations) † = interpolated, ‡ = extrapolated station

MD [ft]	Inclination [°]	Azimuth [°]	TVD [ft]	Vert Sect [ft]	North [ft]	East [ft]	Grid East [US ft]	Grid North [US ft]	Latitude	Longitude	Closure Dist [ft]	Closure Dir [°]	DLS [°/100ft]	Build Rate [°/100ft]	Turn Rate [°/100ft]	Comments
16029.00	89.910	160.600	6164.40	10898.44	-9657.41	5372.46	1643770.80	14305614.37	39°23'40.6075"N	80°59'17.2594"W	11051.19	150.913	0.50	0.48	0.11	
16124.00	89.820	158.310	6164.62	10993.42	-9746.36	5405.80	1643804.13	14305525.45	39°23'39.7283"N	80°59'16.8349"W	11145.14	150.985	2.41	-0.09	-2.41	
16219.00	90.280	161.190	6164.54	11088.40	-9835.48	5438.68	1643836.99	14305436.37	39°23'38.8474"N	80°59'16.4163"W	11239.03	151.059	3.07	0.48	3.03	
16314.00	87.720	161.050	6166.20	11183.37	-9925.34	5469.41	1643867.71	14305346.54	39°23'37.9592"N	80°59'16.0250"W	11332.56	151.143	2.70	-2.69	-0.15	
16409.00	89.940	160.750	6168.14	11278.34	-10015.09	5500.49	1643898.78	14305256.83	39°23'37.0721"N	80°59'15.6293"W	11426.17	151.224	2.36	2.34	-0.32	
16504.00	90.120	161.250	6168.09	11373.34	-10104.91	5531.42	1643929.69	14305167.04	39°23'36.1843"N	80°59'15.2355"W	11519.80	151.304	0.56	0.19	0.53	
16598.00	90.180	161.290	6167.84	11467.33	-10193.94	5561.60	1643959.86	14305078.05	39°23'35.3044"N	80°59'14.8512"W	11612.40	151.384	0.08	0.06	0.04	
16693.00	89.480	161.930	6168.12	11562.31	-10284.08	5591.57	1643989.82	14304987.94	39°23'34.4134"N	80°59'14.4696"W	11705.90	151.467	1.00	-0.74	0.67	
16788.00	89.570	161.590	6168.91	11657.28	-10374.31	5621.30	1644019.54	14304897.75	39°23'33.5216"N	80°59'14.0910"W	11799.38	151.549	0.37	0.09	-0.36	
16883.00	88.920	161.150	6170.16	11752.26	-10464.32	5651.65	1644049.88	14304807.78	39°23'32.6319"N	80°59'13.7047"W	11892.99	151.627	0.83	-0.68	-0.46	
16977.00	88.950	161.220	6171.91	11846.23	-10553.28	5681.96	1644080.18	14304718.85	39°23'31.7526"N	80°59'13.3188"W	11985.68	151.702	0.08	0.03	0.07	
17071.00	88.950	161.090	6173.63	11940.21	-10642.23	5712.32	1644110.52	14304629.94	39°23'30.8735"N	80°59'12.9323"W	12078.39	151.775	0.14	0.00	-0.14	
17166.00	88.950	161.480	6175.37	12035.18	-10732.19	5742.80	1644140.99	14304540.01	39°23'29.9843"N	80°59'12.5443"W	12172.08	151.849	0.41	0.00	0.41	
17261.00	89.380	161.490	6176.76	12130.16	-10822.26	5772.96	1644171.14	14304449.98	39°23'29.0940"N	80°59'12.1602"W	12265.74	151.923	0.45	0.45	0.01	
17356.00	89.260	161.270	6177.88	12225.14	-10912.28	5803.29	1644201.46	14304359.99	39°23'28.2043"N	80°59'11.7741"W	12359.45	151.995	0.26	-0.13	-0.23	
17451.00	89.170	161.430	6179.19	12320.12	-11002.29	5833.67	1644231.82	14304270.03	39°23'27.3147"N	80°59'11.3873"W	12453.19	152.066	0.19	-0.09	0.17	
17545.00	89.010	161.360	6180.68	12414.09	-11091.36	5863.65	1644261.80	14304180.99	39°23'26.4342"N	80°59'11.0056"W	12545.95	152.136	0.19	-0.17	-0.07	
17640.00	88.800	161.340	6182.49	12509.07	-11181.36	5894.03	1644292.16	14304091.03	39°23'25.5447"N	80°59'10.6189"W	12639.71	152.205	0.22	-0.22	-0.02	
17735.00	89.170	161.770	6184.18	12604.03	-11271.46	5924.08	1644322.20	14304000.96	39°23'24.6541"N	80°59'10.2363"W	12733.44	152.274	0.60	0.39	0.45	
17829.00	89.110	160.710	6185.59	12698.01	-11360.46	5954.31	1644352.41	14303912.00	39°23'23.7745"N	80°59'9.8515"W	12826.29	152.340	1.13	-0.06	-1.13	
17924.00	89.110	161.380	6187.06	12792.99	-11450.30	5985.16	1644383.26	14303822.20	39°23'22.8865"N	80°59'9.4587"W	12920.19	152.404	0.71	0.00	0.71	
18018.00	89.170	161.620	6188.47	12886.97	-11539.43	6014.98	1644413.07	14303733.10	39°23'22.0055"N	80°59'9.0790"W	13013.01	152.469	0.26	0.06	0.26	
18113.00	89.290	161.770	6189.75	12981.94	-11629.61	6044.82	1644442.89	14303642.95	39°23'21.1141"N	80°59'8.6992"W	13106.78	152.536	0.20	0.13	0.16	
18208.00	89.110	161.650	6191.08	13076.90	-11719.80	6074.63	1644472.69	14303552.80	39°23'20.2227"N	80°59'8.3197"W	13200.57	152.601	0.23	-0.19	-0.13	
18239.00‡	89.110	161.650	6191.56	13107.89	-11749.22	6084.39	1644482.44	14303523.39	39°23'19.9319"N	80°59'8.1955"W	13231.18	152.622	0.00	0.00	0.00	Projected MD at TD: 18239'

RECEIVED
 Office of Oil and Gas
 WV Department of
 Environmental Protection
 AUG 21 2023



Actual Wellpath Report

Little Unit 2H AWP Proj: 18239'
Page 9 of 11



REFERENCE WELLPATH IDENTIFICATION			
Operator	ANTERO RESOURCES CORPORATION	Well	Little Unit 2H
Field	Tyler	API	47-095-02812-0000
Facility	Wrigley Pad	Wellbore	Little Unit 2H AWB
Slot	Slot F		

HOLE & CASING SECTIONS - Ref Wellbore: Little Unit 2H AWB Ref Wellpath: Little Unit 2H AWP Proj: 18239'										
String/Diameter	Start MD [ft]	End MD [ft]	Interval [ft]	Start TVD [ft]	End TVD [ft]	Start N/S [ft]	Start E/W [ft]	End N/S [ft]	End E/W [ft]	
20in Conductor	30.00	130.00	100.00	30.00	130.00	0.00	0.00	-0.23	-0.06	
17.5in Open Hole	130.00	624.00	494.00	130.00	624.00	-0.23	-0.06	-1.86	0.91	
13.375in Casing Surface	30.00	604.00	574.00	30.00	604.00	0.00	0.00	-1.81	0.89	
12.25in Open Hole	624.00	3457.00	2833.00	624.00	3242.62	-1.86	0.91	-239.03	970.38	
9.625in Casing Intermediate	30.00	3427.00	3397.00	30.00	3215.75	0.00	0.00	-236.03	957.37	
8.75in Open Hole	3457.00	6007.00	2550.00	3242.62	5575.43	-239.03	970.38	-519.01	1954.64	
8.5in Open Hole	6007.00	18239.00	12232.00	5575.43	6191.56	-519.01	1954.64	-11749.22	6084.39	
5.5in Casing Production	30.00	18219.00	18189.00	30.00	6191.25	0.00	0.00	-11730.24	6078.09	

RECEIVED
 Office of Oil and Gas
 WV Department of
 Environmental Protection
 AUG 21 2023



Actual Wellpath Report

Little Unit 2H AWP Proj: 18239'
Page 10 of 11



REFERENCE WELLPATH IDENTIFICATION			
Operator	ANTERO RESOURCES CORPORATION	Well	Little Unit 2H
Field	Tyler	API	47-095-02812-0000
Facility	Wrigley Pad	Wellbore	Little Unit 2H AWB
Slot	Slot F		

TARGETS								
Name	TVD [ft]	North [ft]	East [ft]	Grid East [US ft]	Grid North [US ft]	Latitude	Longitude	Shape
Little Unit 2H POE Rev-2	6090.00	-909.63	2240.83	1640640.43	14314358.63	39°25'7.0685"N	80°59'57.1477"W	point
Little Unit 2H BHL Rev-2	6136.00	-11869.70	6133.91	1644531.94	14303402.96	39°23'18.7411"N	80°59'7.5650"W	point
Little Unit 2H BHL Rev-3	6136.00	-11771.43	6099.00	1644497.05	14303501.19	39°23'19.7124"N	80°59'8.0094"W	point
Little Unit 2H LP Rev-2	6136.00	-1147.59	2325.36	1640724.92	14314120.76	39°25'4.7166"N	80°59'56.0707"W	point
Little Unit 2H 50' L/R Hard Line Rev-2	6250.00	-6340.53	4169.92	1642568.74	14308929.91	39°24'13.3912"N	80°59'32.5733"W	rectangle
2D Rectangle 11526.7 x 100.								

WELLPATH COMPOSITION - Ref Wellbore: Little Unit 2H AWB Ref Wellpath: Little Unit 2H AWP Proj: 18239'					
Start MD [ft]	End MD [ft]	Positional Uncertainty Model	Log Name/Comment	Wellbore	Survey Date
30.00	645.00	Gyrodatta 2015 - GC+WIR+DPIPE	01 Gyrodatta MS Gyro <17-1/2"> (100'-645')	Little Unit 2H AWB	1/26/2023
645.00	3383.00	BH NaviTrak (2019) (Axial Corr+HRGM)	02 APS EM <12-1/4"> (645')(686'-3383')	Little Unit 2H AWB	1/26/2023
3383.00	5933.00	BH NaviTrak (2019) (Axial Corr+HRGM)	03 APS EM <8-3/4"> (3383')(3500'-5933')	Little Unit 2H AWB	1/26/2023
5933.00	18239.00	BH AutoTrak Curve/eXpress (2019) (HRGM, Short spacing)	04 BH AT Curve <8-1/2"> (5933')(5988'-18208')	Little Unit 2H AWB	1/26/2023

RECEIVED
 Office of Oil and Gas
 WV Department of
 Environmental Protection
 AUG 21 2023



Actual Wellpath Report

Little Unit 2H AWP Proj: 18239'
Page 11 of 11



REFERENCE WELLPATH IDENTIFICATION			
Operator	ANTERO RESOURCES CORPORATION	Well	Little Unit 2H
Field	Tyler	API	47-095-02812-0000
Facility	Wrigley Pad	Wellbore	Little Unit 2H AWB
Slot	Slot F		

COMMENTS
<p>Wellpath general comments API: 47-095-02812-0000 BH Job #: 111653870 Rig: H&P 531 Duration: 1/28/2023-2/3/2023 Gyrodatta MS Gyro <17-1/2"> (100'-645') APS EM <12-1/4"> (645')(686'-3383') APS EM <8-3/4"> (3383')(3500'-5933') BH AT Curve <8-1/2"> (5933')(5988'-18208') Sycamore: 6397' MD Middlesex: 6551' MD Burkett: 6712' MD Tully: 6756' MD Marcellus POE: 6764' MD Projected MD at TD: 18239'</p>

RECEIVED
Office of Oil and Gas
AUG 21 2023
WV Department of
Environmental Protection