



ANTERO RESOURCES CORPORATION



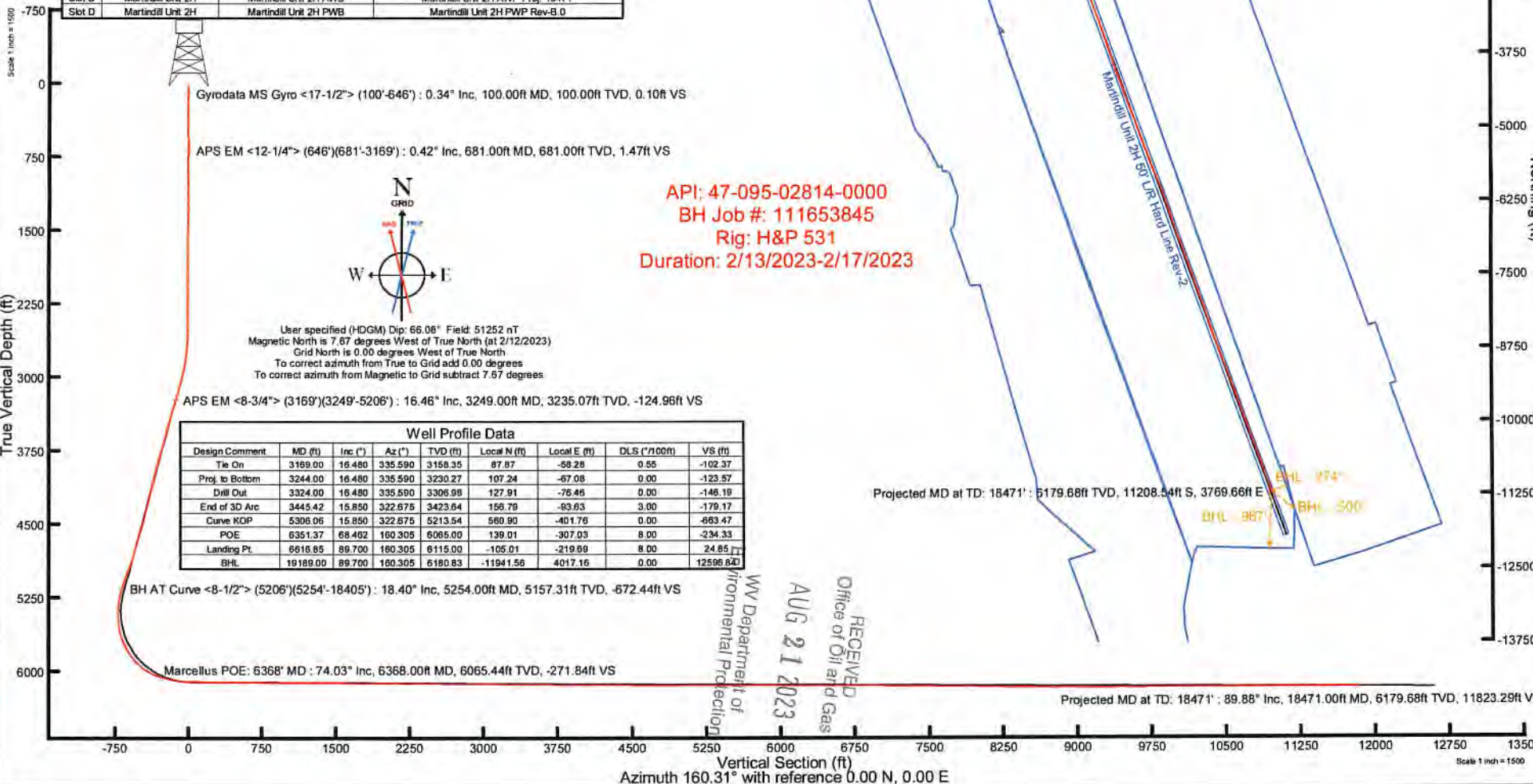
Location: Tyler County, WV
 Field: Tyler
 Facility: Wrigley Pad

Slot: Slot D
 Well: Martindill Unit 2H
 Wellbore: Martindill Unit 2H PWB

Plot reference wellpath is Martindill Unit 2H PWP Rev-B.0	Grid System: NAD83 / UTM Zone 17 North, US Feet
True vertical depths are referenced to H&P 531 (RKB)	North Reference: Grid north
Reference wellpath measured depths are referenced to H&P 531 (RKB)	Scale: True distance
H&P 531 (RKB) to Mean Sea Level: -607 feet	Coordinates are in feet referenced to Slot
Mean Sea Level to Ground level (At Slot: Slot D): -627 feet	Depths are in feet
Offset wellpath MDs are referenced to each path's default MD datum	Created by: always on 2023-03-13, 09:00:00 AM, WVA, EASTERN/S, Date

Location Information						
Facility Name		Grid East (US ft)	Grid North (US ft)	Latitude	Longitude	
Wrigley Pad		1638329.430	14315291.560	37°25'16.2920"N	81°00'26.6070"W	
Slot	Local N (ft)	Local E (ft)	Grid East (US ft)	Grid North (US ft)	Latitude	Longitude
Slot D	-14.28	42.70	1638372.110	14315277.290	37°25'16.1510"N	81°00'26.0630"W
Comment: Martindill Unit 2H						
H&P 531 (RKB) to Ground level (At Slot: Slot D)				30ft		
Mean Sea Level to Ground level (At Slot: Slot D)				-637ft		
H&P 531 (RKB) to Mean Sea Level				-957ft		

Well Data			
Slot	Well	Wellbore	Wellpath
Slot D	Martindill Unit 2H	Martindill Unit 2H AWP	Martindill Unit 2H AWP Proj. 18471'
Slot D	Martindill Unit 2H	Martindill Unit 2H PWB	Martindill Unit 2H PWP Rev-B.0





Actual Wellpath Report

Martindill Unit 2H AWP Proj: 18471'
Page 1 of 11



REFERENCE WELLPATH IDENTIFICATION			
Operator	ANTERO RESOURCES CORPORATION	Well	Martindill Unit 2H
Field	Tyler	API	47-095-02814-0000
Facility	Wrigley Pad	Wellbore	Martindill Unit 2H AWB
Slot	Slot D		

REPORT SETUP INFORMATION			
Projection System	NAD27 / UTM Zone 17 North, US feet	Software System	WellArchitect® 6.0
North Reference	Grid	User	Edsaryar
Scale	0.999600	Report Generated	3/13/2023 at 10:13:36 PM
Convergence at slot	0.00°	Database	WA_MPL_EASTERNUS_Defn

WELLPATH LOCATION						
	Local coordinates		Grid coordinates		Geographic coordinates	
	North[ft]	East[ft]	Easting[US ft]	Northing[US ft]	Latitude	Longitude
Slot Location	-14.28	42.70	1638372.11	14315277.29	39°25'16.1510"N	81°00'26.0630"W
Facility Reference Pt			1638329.43	14315291.56	39°25'16.2920"N	81°00'26.6070"W
Field Reference Pt			0.00	0.00	0°00'0.0000"	85°29'19.3013"W

WELLPATH DATUM			
Calculation method	Minimum curvature	H&P 531 (RKB) to Facility Vertical Datum	967.00ft
Horizontal Reference Pt	Slot	H&P 531 (RKB) to Mean Sea Level	967.00ft
Vertical Reference Pt	H&P 531 (RKB)	H&P 531 (RKB) to Ground Level at Slot (Slot D)	30.00ft
MD Reference Pt	H&P 531 (RKB)	Section Origin	N 0.00, E 0.00 ft
Field Vertical Reference	Mean Sea Level	Section Azimuth	160.31°

RECEIVED
 Office of Oil and Gas
 WV Department of
 Environmental Protection
 AUG 21 2023



Actual Wellpath Report

Martindill Unit 2H AWP Proj: 18471'
Page 2 of 11



REFERENCE WELLPATH IDENTIFICATION			
Operator	ANTERO RESOURCES CORPORATION	Well	Martindill Unit 2H
Field	Tyler	API	47-095-02814-0000
Facility	Wrigley Pad	Wellbore	Martindill Unit 2H AWB
Slot	Slot D		

WELLPATH DATA (202 stations) † = interpolated, ‡ = extrapolated station																
MD [ft]	Inclination [°]	Azimuth [°]	TVD [ft]	Vert Sect [ft]	North [ft]	East [ft]	Grid East [US ft]	Grid North [US ft]	Latitude	Longitude	Closure Dist [ft]	Closure Dir [°]	DLS ["/100ft]	Build Rate ["/100ft]	Turn Rate ["/100ft]	Comments
0.00†	0.000	100.430	0.00	0.00	0.00	0.00	1638372.11	14315277.29	39°25'16.1510"N	81°00'26.0630"W	0.00	0.000	0.00	0.00	0.00	
30.00	0.000	100.430	30.00	0.00	0.00	0.00	1638372.11	14315277.29	39°25'16.1510"N	81°00'26.0630"W	0.00	0.000	0.00	0.00	0.00	
100.00	0.340	100.430	100.00	0.10	-0.04	0.20	1638372.31	14315277.25	39°25'16.1506"N	81°00'26.0604"W	0.21	100.430	0.49	0.49	0.00	Gyrodatta MS Gyro <17-1/2"> (100'-646')
200.00	0.300	111.050	200.00	0.42	-0.19	0.74	1638372.85	14315277.10	39°25'16.1491"N	81°00'26.0535"W	0.76	104.054	0.07	-0.04	10.62	
300.00	0.220	111.110	300.00	0.72	-0.35	1.16	1638373.27	14315276.94	39°25'16.1475"N	81°00'26.0481"W	1.21	106.671	0.08	-0.08	0.06	
400.00	0.180	111.490	400.00	0.95	-0.48	1.49	1638373.60	14315276.81	39°25'16.1463"N	81°00'26.0440"W	1.56	107.700	0.04	-0.04	0.38	
500.00	0.180	159.600	500.00	1.21	-0.68	1.69	1638373.80	14315276.61	39°25'16.1442"N	81°00'26.0414"W	1.82	111.918	0.15	0.00	48.11	
600.00	0.140	219.330	600.00	1.43	-0.92	1.67	1638373.78	14315276.37	39°25'16.1419"N	81°00'26.0417"W	1.91	118.934	0.16	-0.04	59.73	
646.00	0.110	238.860	646.00	1.47	-0.99	1.59	1638373.70	14315276.30	39°25'16.1412"N	81°00'26.0427"W	1.88	121.794	0.11	-0.07	42.46	
681.00	0.420	254.050	681.00	1.47	-1.04	1.44	1638373.55	14315276.25	39°25'16.1407"N	81°00'26.0446"W	1.78	125.821	0.90	0.89	43.40	APS EM <12-1/4"> (646')(681'-3169')
773.00	0.410	294.410	772.99	1.21	-1.00	0.82	1638372.93	14315276.29	39°25'16.1411"N	81°00'26.0525"W	1.29	140.645	0.31	-0.01	43.87	
863.00	0.600	289.320	862.99	0.69	-0.71	0.08	1638372.19	14315276.58	39°25'16.1440"N	81°00'26.0619"W	0.71	173.562	0.22	0.21	-5.66	
953.00	0.520	299.640	952.99	0.09	-0.35	-0.72	1638371.39	14315276.94	39°25'16.1475"N	81°00'26.0721"W	0.80	244.040	0.14	-0.09	11.47	
1042.00	0.680	283.230	1041.98	-0.51	-0.03	-1.58	1638370.53	14315277.26	39°25'16.1507"N	81°00'26.0832"W	1.59	268.922	0.26	0.18	-18.44	
1137.00	0.610	267.570	1136.97	-0.96	0.08	-2.64	1638369.47	14315277.37	39°25'16.1517"N	81°00'26.0966"W	2.64	271.688	0.20	-0.07	-16.48	
1231.00	0.380	271.040	1230.97	-1.22	0.06	-3.45	1638368.66	14315277.35	39°25'16.1516"N	81°00'26.1069"W	3.45	271.033	0.25	-0.24	3.69	
1326.00	0.600	279.160	1325.97	-1.57	0.15	-4.26	1638367.86	14315277.44	39°25'16.1524"N	81°00'26.1172"W	4.26	271.979	0.24	0.23	8.55	
1421.00	0.450	254.580	1420.96	-1.84	0.13	-5.11	1638367.00	14315277.42	39°25'16.1522"N	81°00'26.1280"W	5.11	271.425	0.28	-0.16	-25.87	
1515.00	0.470	285.190	1514.96	-2.09	0.13	-5.84	1638366.28	14315277.42	39°25'16.1522"N	81°00'26.1373"W	5.84	271.276	0.26	0.02	32.56	
1610.00	0.470	242.850	1609.96	-2.26	0.05	-6.56	1638365.55	14315277.34	39°25'16.1515"N	81°00'26.1465"W	6.56	270.474	0.36	0.00	-44.57	
1704.00	0.480	275.350	1703.95	-2.38	-0.08	-7.29	1638364.82	14315277.21	39°25'16.1501"N	81°00'26.1559"W	7.29	269.332	0.28	0.01	34.57	
1799.00	0.530	241.330	1798.95	-2.48	-0.26	-8.07	1638364.04	14315277.03	39°25'16.1484"N	81°00'26.1659"W	8.08	268.165	0.32	0.05	-35.81	
1893.00	0.810	259.120	1892.94	-2.51	-0.59	-9.11	1638363.01	14315276.70	39°25'16.1451"N	81°00'26.1790"W	9.13	266.277	0.37	0.30	18.93	
1988.00	0.260	164.070	1987.94	-2.40	-0.93	-9.71	1638362.41	14315276.36	39°25'16.1418"N	81°00'26.1867"W	9.75	264.548	0.92	-0.58	-100.05	
2083.00	0.360	240.030	2082.94	-2.13	-1.28	-9.91	1638362.21	14315276.01	39°25'16.1383"N	81°00'26.1892"W	9.99	262.622	0.41	0.11	79.96	
2177.00	0.620	231.480	2176.94	-1.91	-1.75	-10.56	1638361.55	14315275.54	39°25'16.1337"N	81°00'26.1975"W	10.71	260.606	0.29	0.28	-9.10	
2272.00	0.580	223.620	2271.93	-1.53	-2.42	-11.30	1638360.82	14315274.88	39°25'16.1271"N	81°00'26.2069"W	11.55	257.930	0.10	-0.04	-8.27	
2367.00	0.540	224.420	2366.93	-1.12	-3.08	-11.94	1638360.17	14315274.21	39°25'16.1205"N	81°00'26.2151"W	12.33	255.522	0.04	-0.04	0.84	
2462.00	0.610	237.810	2461.92	-0.82	-3.67	-12.68	1638359.43	14315273.62	39°25'16.1147"N	81°00'26.2246"W	13.20	253.850	0.16	0.07	14.09	
2556.00	1.450	312.500	2555.91	-1.76	-3.14	-13.98	1638358.13	14315274.16	39°25'16.1200"N	81°00'26.2411"W	14.33	257.361	1.51	0.89	79.46	

RECEIVED
 Office of Oil and Gas
 AUG 21 2023
 WV Department of
 Environmental Protection



Actual Wellpath Report

Martindill Unit 2H AWP Proj: 18471'
Page 3 of 11



REFERENCE WELLPATH IDENTIFICATION			
Operator	ANTERO RESOURCES CORPORATION	Well	Martindill Unit 2H
Field	Tyler	API	47-095-02814-0000
Facility	Wrigley Pad	Wellbore	Martindill Unit 2H AWB
Slot	Slot D		

WELLPATH DATA (202 stations)																
MD [ft]	Inclination [°]	Azimuth [°]	TVD [ft]	Vert Sect [ft]	North [ft]	East [ft]	Grid East [US ft]	Grid North [US ft]	Latitude	Longitude	Closure Dist [ft]	Closure Dir [°]	DLS [°/100ft]	Build Rate [°/100ft]	Turn Rate [°/100ft]	Comments
2651.00	3.740	330.560	2650.81	-5.88	0.38	-16.39	1638355.72	14315277.67	39°25'16.1547"N	81°00'26.2718"W	16.40	271.312	2.53	2.41	19.01	
2746.00	6.360	334.430	2745.43	-14.17	7.82	-20.19	1638351.93	14315285.11	39°25'16.2282"N	81°00'26.3202"W	21.65	291.179	2.78	2.76	4.07	
2840.00	8.800	333.660	2838.60	-26.49	18.96	-25.62	1638346.50	14315296.25	39°25'16.3384"N	81°00'26.3895"W	31.88	306.503	2.60	2.60	-0.82	
2935.00	11.790	333.300	2932.06	-43.34	34.15	-33.21	1638338.91	14315311.43	39°25'16.4885"N	81°00'26.4862"W	47.64	315.798	3.15	3.15	-0.38	
3030.00	14.560	334.840	3024.55	-64.87	53.63	-42.65	1638329.48	14315330.90	39°25'16.6810"N	81°00'26.6065"W	68.52	321.507	2.94	2.92	1.62	
3124.00	16.240	335.790	3115.17	-89.73	76.32	-53.07	1638319.07	14315353.58	39°25'16.9052"N	81°00'26.7392"W	92.95	325.188	1.81	1.79	1.01	
3169.00	16.480	335.590	3158.35	-102.37	87.87	-58.28	1638313.85	14315365.12	39°25'17.0194"N	81°00'26.8057"W	105.44	326.443	0.55	0.53	-0.44	
3249.00	16.460	334.960	3235.07	-124.96	108.47	-67.77	1638304.37	14315385.72	39°25'17.2230"N	81°00'26.9266"W	127.90	328.003	0.22	-0.03	-0.79	APS EM <8-3/4"> (3169')(3249'-5206')
3311.00	16.580	332.600	3294.51	-142.47	124.28	-75.56	1638296.58	14315401.52	39°25'17.3792"N	81°00'27.0259"W	145.45	328.702	1.10	0.19	-3.81	
3408.00	16.950	328.360	3387.39	-170.02	148.61	-89.35	1638282.80	14315425.84	39°25'17.6196"N	81°00'27.2016"W	173.40	328.985	1.32	0.38	-4.37	
3502.00	16.830	324.990	3477.34	-196.55	171.42	-104.34	1638267.81	14315448.64	39°25'17.8451"N	81°00'27.3927"W	200.68	328.672	1.05	-0.13	-3.59	
3597.00	16.670	320.100	3568.31	-222.60	193.14	-120.97	1638251.19	14315470.35	39°25'18.0597"N	81°00'27.6046"W	227.90	327.939	1.49	-0.17	-5.15	
3692.00	15.610	323.840	3659.57	-247.65	213.91	-137.26	1638234.91	14315491.12	39°25'18.2650"N	81°00'27.8122"W	254.16	327.314	1.56	-1.12	3.94	
3786.00	15.800	324.160	3750.06	-272.07	234.50	-152.21	1638219.96	14315511.69	39°25'18.4685"N	81°00'28.0027"W	279.57	327.013	0.22	0.20	0.34	
3881.00	15.640	321.620	3841.51	-296.62	255.02	-167.73	1638204.44	14315532.21	39°25'18.6713"N	81°00'28.2006"W	305.24	326.666	0.74	-0.17	-2.67	
3976.00	15.210	327.800	3933.09	-320.92	275.61	-182.33	1638189.86	14315552.78	39°25'18.8748"N	81°00'28.3865"W	330.46	326.513	1.79	-0.45	6.51	
4071.00	14.720	328.570	4024.87	-344.91	296.45	-195.26	1638176.93	14315573.62	39°25'19.0808"N	81°00'28.5514"W	354.98	326.628	0.56	-0.52	0.81	
4165.00	14.260	324.990	4115.88	-367.76	316.12	-208.13	1638164.06	14315593.29	39°25'19.2752"N	81°00'28.7154"W	378.49	326.640	1.07	-0.49	-3.81	
4260.00	13.660	320.180	4208.08	-389.58	334.32	-222.03	1638150.17	14315611.48	39°25'19.4550"N	81°00'28.8925"W	401.33	326.411	1.37	-0.63	-5.06	
4355.00	14.510	325.080	4300.22	-411.60	352.70	-236.03	1638136.18	14315629.85	39°25'19.6366"N	81°00'29.0709"W	424.39	326.210	1.54	0.89	5.16	
4450.00	14.210	324.220	4392.26	-434.29	371.92	-249.66	1638122.56	14315649.06	39°25'19.8266"N	81°00'29.2446"W	447.94	326.128	0.39	-0.32	-0.91	
4544.00	16.210	322.580	4482.96	-457.87	391.70	-264.37	1638107.84	14315668.83	39°25'20.0221"N	81°00'29.4322"W	472.57	325.983	2.18	2.13	-1.74	
4639.00	17.940	326.180	4573.77	-484.69	414.39	-280.58	1638091.65	14315691.51	39°25'20.2463"N	81°00'29.6387"W	500.44	325.898	2.13	1.82	3.79	
4734.00	17.310	322.850	4664.31	-512.36	437.81	-297.26	1638074.97	14315714.92	39°25'20.4778"N	81°00'29.8512"W	529.18	325.825	1.25	-0.66	-3.51	
4829.00	16.410	319.390	4755.23	-538.38	459.26	-314.53	1638057.71	14315736.37	39°25'20.6898"N	81°00'30.0713"W	556.64	325.594	1.42	-0.95	-3.64	
4923.00	17.530	323.750	4845.14	-564.36	480.76	-331.54	1638040.70	14315757.86	39°25'20.9023"N	81°00'30.2882"W	583.99	325.409	1.80	1.19	4.64	
5018.00	20.890	334.610	4934.87	-594.94	507.61	-347.27	1638024.98	14315784.70	39°25'21.1677"N	81°00'30.4887"W	615.04	325.623	5.15	3.54	11.43	
5113.00	19.660	330.810	5023.98	-627.56	536.87	-362.33	1638009.92	14315813.94	39°25'21.4568"N	81°00'30.6806"W	647.70	325.985	1.90	-1.29	-4.00	
5206.00	18.760	327.380	5111.81	-657.57	563.12	-378.02	1637994.24	14315840.19	39°25'21.7163"N	81°00'30.8806"W	678.24	326.127	1.55	-0.97	-3.69	
5254.00	18.400	326.180	5157.31	-672.44	575.92	-386.40	1637985.86	14315852.98	39°25'21.8427"N	81°00'30.9873"W	693.53	326.141	1.09	-0.75	-2.50	BH AT Curve <8-1/2"> (5206')(5254'-18405')

RECEIVED
 Office of Oil and Gas
 AUG 21 2023
 WV Department of
 Environmental Protection



Actual Wellpath Report

Martindill Unit 2H AWP Proj: 18471'
Page 4 of 11



REFERENCE WELLPATH IDENTIFICATION			
Operator	ANTERO RESOURCES CORPORATION	Well	Martindill Unit 2H
Field	Tyler	API	47-095-02814-0000
Facility	Wrigley Pad	Wellbore	Martindill Unit 2H AWB
Slot	Slot D		

WELLPATH DATA (202 stations) † = interpolated, ‡ = extrapolated station																
MD	Inclination	Azimuth	TVD	Vert Sect	North	East	Grid East	Grid North	Latitude	Longitude	Closure Dist	Closure Dir	DLS	Build Rate	Turn Rate	Comments
[ft]	[°]	[°]	[ft]	[ft]	[ft]	[ft]	[US ft]	[US ft]			[ft]	[°]	["/100ft]	["/100ft]	["/100ft]	
5334.00	14.470	316.180	5234.04	-693.81	593.63	-400.36	1637971.91	14315870.68	39°25'22.0178"N	81°00'31.1652"W	716.02	326.003	6.04	-4.91	-12.50	
5429.00	7.670	288.340	5327.27	-708.58	604.21	-414.62	1637957.66	14315881.26	39°25'22.1223"N	81°00'31.3469"W	732.79	325.541	8.91	-7.16	-29.31	
5523.00	8.480	255.980	5420.39	-713.13	604.50	-427.30	1637944.98	14315881.55	39°25'22.1252"N	81°00'31.5086"W	740.28	324.745	4.84	0.86	-34.43	
5618.00	9.430	210.490	5514.34	-708.83	596.09	-438.06	1637934.22	14315873.14	39°25'22.0420"N	81°00'31.6456"W	739.74	323.688	7.32	1.00	-47.88	
5713.00	14.950	183.690	5607.24	-692.58	577.13	-442.81	1637929.48	14315854.18	39°25'21.8546"N	81°00'31.7061"W	727.43	322.502	8.18	5.81	-28.21	
5807.00	22.110	175.780	5696.32	-664.36	547.34	-442.28	1637930.00	14315824.41	39°25'21.5602"N	81°00'31.6994"W	703.70	321.060	8.06	7.62	-8.41	
5902.00	29.500	170.690	5781.80	-624.06	506.37	-437.18	1637935.11	14315783.45	39°25'21.1553"N	81°00'31.6343"W	668.98	319.194	8.11	7.78	-5.36	
5997.00	37.520	167.960	5860.95	-572.29	454.90	-427.34	1637944.94	14315732.01	39°25'20.6466"N	81°00'31.5089"W	624.15	316.789	8.59	8.44	-2.87	
6009.00†	38.599	167.805	5870.39	-564.96	447.67	-425.79	1637946.49	14315724.78	39°25'20.5752"N	81°00'31.4891"W	617.82	316.435	9.03	9.00	-1.29	Sycamore: 6009' MD
6092.00	46.070	166.900	5931.71	-509.52	393.18	-413.53	1637958.75	14315670.31	39°25'20.0366"N	81°00'31.3328"W	570.61	313.555	9.03	9.00	-1.09	
6143.00†	51.438	165.562	5965.32	-471.39	355.95	-404.39	1637967.89	14315633.10	39°25'19.6687"N	81°00'31.2163"W	538.73	311.355	10.71	10.53	-2.62	Middlesex: 6143' MD
6187.00	56.080	164.560	5991.33	-436.03	321.68	-395.23	1637977.04	14315598.84	39°25'19.3299"N	81°00'31.0996"W	509.59	309.142	10.71	10.55	-2.28	
6281.00	66.640	161.340	6036.33	-353.75	242.97	-370.97	1638001.29	14315520.16	39°25'18.5520"N	81°00'30.7903"W	443.45	303.223	11.63	11.23	-3.43	
6302.00†	68.504	160.782	6044.34	-334.34	224.61	-364.67	1638007.59	14315501.81	39°25'18.3705"N	81°00'30.7100"W	428.29	301.630	9.21	8.88	-2.66	Burkett: 6302' MD
6332.00	71.170	160.010	6054.68	-306.18	198.08	-355.22	1638017.03	14315475.29	39°25'18.1084"N	81°00'30.5896"W	406.72	299.145	9.21	8.89	-2.57	
6368.00†	74.033	158.976	6065.44	-271.84	165.91	-343.19	1638029.06	14315443.13	39°25'17.7904"N	81°00'30.4362"W	381.19	295.801	8.41	7.95	-2.87	Marcellus POE: 6368' MD
6376.00	74.670	158.750	6067.60	-264.14	158.72	-340.41	1638031.84	14315435.95	39°25'17.7194"N	81°00'30.4008"W	375.59	294.998	8.41	7.96	-2.82	
6471.00	76.940	157.410	6090.89	-172.12	73.29	-306.02	1638066.21	14315350.55	39°25'16.8751"N	81°00'29.9625"W	314.68	283.469	2.75	2.39	-1.41	
6565.00	83.180	156.980	6107.11	-79.71	-12.02	-270.15	1638102.07	14315265.28	39°25'16.0320"N	81°00'29.5053"W	270.42	267.453	6.65	6.64	-0.46	
6660.00	88.980	156.880	6113.60	14.86	-99.18	-233.03	1638139.18	14315178.15	39°25'15.1706"N	81°00'29.0322"W	253.25	246.946	6.11	6.11	-0.11	
6755.00	89.820	157.200	6114.60	109.70	-186.64	-195.97	1638176.22	14315090.72	39°25'14.3061"N	81°00'28.5599"W	270.63	226.397	0.95	0.88	0.34	
6850.00	89.570	157.790	6115.10	204.59	-274.41	-159.61	1638212.56	14315002.99	39°25'13.4387"N	81°00'28.0965"W	317.45	210.185	0.67	-0.26	0.62	
6944.00	89.450	159.650	6115.91	298.54	-361.99	-125.50	1638246.66	14314915.44	39°25'12.5731"N	81°00'27.6617"W	383.13	199.121	1.98	-0.13	1.98	
7039.00	89.540	159.200	6116.75	393.53	-450.93	-92.11	1638280.03	14314826.54	39°25'11.6941"N	81°00'27.2362"W	460.24	191.545	0.48	0.09	-0.47	
7134.00	89.420	159.450	6117.61	488.51	-539.81	-58.57	1638313.56	14314737.70	39°25'10.8157"N	81°00'26.8088"W	542.97	186.193	0.29	-0.13	0.26	
7229.00	89.750	159.380	6118.30	583.49	-628.74	-25.17	1638346.95	14314648.80	39°25'9.9368"N	81°00'26.3831"W	629.24	182.293	0.36	0.35	-0.07	
7323.00	89.630	159.880	6118.80	677.49	-716.86	7.55	1638379.65	14314560.72	39°25'9.0659"N	81°00'25.9661"W	716.90	179.397	0.55	-0.13	0.53	
7418.00	89.080	159.760	6119.87	772.48	-806.02	40.32	1638412.41	14314471.59	39°25'8.1847"N	81°00'25.5484"W	807.03	177.137	0.59	-0.58	-0.13	
7513.00	89.820	158.410	6120.79	867.45	-894.75	74.23	1638446.31	14314382.90	39°25'7.3077"N	81°00'25.1163"W	897.83	175.258	1.62	0.78	-1.42	
7607.00	89.260	159.330	6121.54	961.41	-982.43	108.11	1638480.18	14314295.25	39°25'6.4412"N	81°00'24.6844"W	988.36	173.720	1.15	-0.60	0.98	

RECEIVED
 Office of Oil and Gas
 AUG 21 2023
 WV Department of
 Environmental Protection



Actual Wellpath Report

Martindill Unit 2H AWP Proj: 18471'
Page 5 of 11



REFERENCE WELLPATH IDENTIFICATION			
Operator	ANTERO RESOURCES CORPORATION	Well	Martindill Unit 2H
Field	Tyler	API	47-095-02814-0000
Facility	Wrigley Pad	Wellbore	Martindill Unit 2H AWB
Slot	Slot D		

WELLPATH DATA (202 stations)																	
MD [ft]	Inclination [°]	Azimuth [°]	TVD [ft]	Vert Sect [ft]	North [ft]	East [ft]	Grid East [US ft]	Grid North [US ft]	Latitude	Longitude	Closure Dist [ft]	Closure Dir [°]	DLS [°/100ft]	Build Rate [°/100ft]	Turn Rate [°/100ft]	Comments	
7702.00	90.060	158.100	6122.10	1056.37	-1070.95	142.60	1638514.65	14314206.77	39°25'5.5664"N	81°00'24.2449"W	1080.40	172.416	1.54	0.84	-1.29		
7796.00	89.510	158.960	6122.46	1150.32	-1158.42	177.00	1638549.04	14314119.33	39°25'4.7018"N	81°00'23.8065"W	1171.87	171.313	1.09	-0.59	0.91		
7891.00	90.220	159.000	6122.68	1245.30	-1247.10	211.08	1638583.10	14314030.69	39°25'3.8254"N	81°00'23.3722"W	1264.84	170.394	0.75	0.75	0.04		
7986.00	89.750	160.420	6122.71	1340.29	-1336.20	244.02	1638616.03	14313941.63	39°25'2.9448"N	81°00'22.9524"W	1358.30	169.651	1.57	-0.49	1.49		
8080.00	89.630	161.450	6123.21	1434.28	-1425.04	274.72	1638646.72	14313852.82	39°25'2.0668"N	81°00'22.5611"W	1451.28	169.088	1.10	-0.13	1.10		
8175.00	89.320	161.310	6124.08	1529.26	-1515.07	305.05	1638677.04	14313762.83	39°25'1.1770"N	81°00'22.1746"W	1545.47	168.616	0.36	-0.33	-0.15		
8270.00	89.780	160.540	6124.83	1624.25	-1604.85	336.10	1638708.07	14313673.09	39°25'0.2897"N	81°00'21.7789"W	1639.66	168.172	0.94	0.48	-0.81		
8364.00	89.910	162.080	6125.09	1718.23	-1693.89	366.22	1638738.18	14313584.08	39°24'59.4097"N	81°00'21.3950"W	1733.02	167.800	1.64	0.14	1.64		
8459.00	88.980	161.300	6126.01	1813.20	-1784.07	396.06	1638768.01	14313493.94	39°24'58.5184"N	81°00'21.0147"W	1827.50	167.483	1.28	-0.98	-0.82		
8553.00	89.230	160.260	6127.47	1907.18	-1872.82	427.00	1638798.94	14313405.22	39°24'57.6413"N	81°00'20.8204"W	1920.88	167.156	1.14	0.27	-1.11		
8648.00	89.260	160.340	6128.73	2002.18	-1962.25	459.02	1638830.95	14313315.83	39°24'56.7574"N	81°00'20.2124"W	2015.23	166.834	0.09	0.03	0.08		
8743.00	89.820	160.890	6129.49	2097.17	-2051.86	490.55	1638862.47	14313226.25	39°24'55.8717"N	81°00'19.8105"W	2109.69	166.554	0.83	0.59	0.58		
8838.00	89.450	161.320	6130.09	2192.16	-2141.74	521.32	1638893.22	14313136.41	39°24'54.9834"N	81°00'19.4185"W	2204.27	166.320	0.60	-0.39	0.45		
8933.00	89.110	161.050	6131.29	2287.14	-2231.66	551.95	1638923.84	14313046.53	39°24'54.0948"N	81°00'19.0281"W	2298.90	166.108	0.46	-0.36	-0.28		
9028.00	89.420	161.790	6132.51	2382.11	-2321.70	582.22	1638954.10	14312956.53	39°24'53.2049"N	81°00'18.6424"W	2393.59	165.922	0.84	0.33	0.78		
9122.00	89.050	159.280	6133.76	2476.10	-2410.31	613.54	1638985.40	14312867.95	39°24'52.3291"N	81°00'18.2433"W	2487.17	165.719	2.70	-0.39	-2.67		
9217.00	89.820	160.830	6134.70	2571.09	-2499.60	645.94	1639017.79	14312778.69	39°24'51.4466"N	81°00'17.8304"W	2581.72	165.511	1.82	0.81	1.63		
9312.00	89.820	161.720	6135.00	2666.07	-2589.57	676.44	1639048.28	14312688.76	39°24'50.5573"N	81°00'17.4418"W	2676.47	165.361	0.94	0.00	0.94		
9406.00	89.020	161.070	6135.95	2760.05	-2678.66	706.43	1639078.25	14312599.71	39°24'49.6769"N	81°00'17.0596"W	2770.24	165.226	1.10	-0.85	-0.69		
9500.00	89.320	160.560	6137.31	2854.04	-2767.43	737.31	1639109.13	14312510.98	39°24'48.7996"N	81°00'16.6660"W	2863.96	165.081	0.83	0.32	-0.54		
9595.00	90.120	161.270	6137.77	2949.03	-2857.20	768.38	1639140.18	14312421.24	39°24'47.9123"N	81°00'16.2702"W	2958.72	164.948	1.13	0.84	0.75		
9690.00	89.200	161.600	6138.34	3044.01	-2947.26	798.62	1639170.41	14312331.22	39°24'47.0223"N	81°00'15.8848"W	3053.54	164.839	1.03	-0.97	0.35		
9785.00	89.320	161.400	6139.56	3138.98	-3037.34	828.76	1639200.54	14312241.17	39°24'46.1319"N	81°00'15.5007"W	3148.38	164.738	0.25	0.13	-0.21		
9879.00	89.540	159.720	6140.50	3232.97	-3125.97	860.04	1639231.81	14312152.57	39°24'45.2559"N	81°00'15.1021"W	3242.13	164.617	1.80	0.23	-1.79		
9974.00	89.020	161.400	6141.69	3327.96	-3215.55	891.66	1639263.41	14312063.04	39°24'44.3707"N	81°00'14.6993"W	3336.88	164.502	1.85	-0.55	1.77		
10069.00	89.380	159.820	6143.02	3422.94	-3305.15	923.19	1639294.93	14311973.47	39°24'43.4851"N	81°00'14.2974"W	3431.66	164.394	1.71	0.38	-1.66		
10164.00	90.090	161.630	6143.46	3517.94	-3394.82	954.55	1639326.28	14311883.84	39°24'42.5989"N	81°00'13.8979"W	3526.46	164.295	2.05	0.75	1.91		
10258.00	89.420	161.450	6143.86	3611.91	-3483.98	984.32	1639356.03	14311794.71	39°24'41.7177"N	81°00'13.5186"W	3620.36	164.224	0.74	-0.71	-0.19		
10353.00	89.600	160.800	6144.67	3706.90	-3573.86	1015.05	1639386.75	14311704.86	39°24'40.8293"N	81°00'13.1270"W	3715.22	164.144	0.71	0.19	-0.68		
10448.00	89.200	161.100	6145.67	3801.89	-3663.66	1046.05	1639417.74	14311615.11	39°24'39.9418"N	81°00'12.7319"W	3810.07	164.065	0.53	-0.42	0.32		

RECEIVED
Office of Oil and Gas
AUG 21 2023
WV Department of
Environmental Protection



Actual Wellpath Report

Martindill Unit 2H AWP Proj: 18471'
Page 6 of 11



REFERENCE WELLPATH IDENTIFICATION			
Operator	ANTERO RESOURCES CORPORATION	Well	Martindill Unit 2H
Field	Tyler	API	47-095-02814-0000
Facility	Wrigley Pad	Wellbore	Martindill Unit 2H AWB
Slot	Slot D		

WELLPATH DATA (202 stations)																
MD (ft)	Inclination (°)	Azimuth (°)	TVD (ft)	Vert Sect (ft)	North (ft)	East (ft)	Grid East (US ft)	Grid North (US ft)	Latitude	Longitude	Closure Dist (ft)	Closure Dir (°)	DLS (°/100ft)	Build Rate (°/100ft)	Turn Rate (°/100ft)	Comments
10543.00	89.230	160.560	6146.97	3896.88	-3753.38	1077.25	1639448.92	14311525.42	39°24'39.0550"N	81°00'12.3345"W	3904.91	163.986	0.57	0.03	-0.57	
10637.00	91.110	163.170	6146.69	3990.83	-3842.70	1106.50	1639478.17	14311436.14	39°24'38.1723"N	81°00'11.9617"W	3998.83	163.936	3.42	2.00	2.78	
10732.00	90.180	161.080	6145.62	4085.77	-3933.10	1135.66	1639507.31	14311345.77	39°24'37.2788"N	81°00'11.5902"W	4093.78	163.894	2.41	-0.98	-2.20	
10827.00	89.350	161.190	6146.01	4180.76	-4023.00	1166.37	1639538.01	14311255.91	39°24'36.3903"N	81°00'11.1989"W	4188.67	163.832	0.88	-0.87	0.12	
10921.00	89.630	160.100	6146.85	4274.75	-4111.68	1197.52	1639569.15	14311167.26	39°24'35.5138"N	81°00'10.8019"W	4282.52	163.762	1.20	0.30	-1.16	
11016.00	89.290	160.100	6147.74	4369.74	-4201.00	1229.86	1639601.47	14311077.98	39°24'34.6310"N	81°00'10.3899"W	4377.32	163.682	0.36	-0.36	0.00	
11111.00	88.830	158.170	6149.30	4464.71	-4289.76	1263.69	1639635.29	14310989.26	39°24'33.7538"N	81°00'9.9589"W	4472.01	163.586	2.09	-0.48	-2.03	
11206.00	88.950	161.300	6151.14	4559.67	-4378.85	1296.58	1639668.17	14310900.20	39°24'32.8733"N	81°00'9.5398"W	4566.77	163.506	3.30	0.13	3.29	
11301.00	90.520	159.180	6151.58	4654.66	-4468.24	1328.70	1639700.27	14310810.84	39°24'31.9897"N	81°00'9.1306"W	4661.61	163.439	2.78	1.65	-2.23	
11395.00	89.820	158.270	6151.30	4748.63	-4555.84	1362.80	1639734.37	14310723.28	39°24'31.1240"N	81°00'8.6961"W	4755.30	163.346	1.22	-0.74	-0.97	
11490.00	89.910	159.420	6151.53	4843.59	-4644.43	1397.09	1639768.64	14310634.72	39°24'30.2484"N	81°00'8.2593"W	4850.01	163.258	1.21	0.09	1.21	
11585.00	89.660	159.040	6151.88	4938.57	-4733.26	1430.78	1639802.31	14310545.93	39°24'29.3705"N	81°00'7.8300"W	4944.78	163.181	0.48	-0.26	-0.40	
11680.00	90.310	160.420	6151.91	5033.57	-4822.37	1463.69	1639835.21	14310456.86	39°24'28.4898"N	81°00'7.4107"W	5039.61	163.116	1.61	0.68	1.45	
11870.00	90.220	159.760	6151.03	5223.56	-5001.01	1528.39	1639899.89	14310278.29	39°24'26.7242"N	81°00'6.5864"W	5229.35	163.006	0.35	-0.05	-0.35	
11964.00	89.880	160.500	6150.95	5317.56	-5089.42	1560.34	1639931.82	14310189.92	39°24'25.8504"N	81°00'6.1793"W	5323.23	162.955	0.87	-0.36	0.79	
12059.00	89.450	159.030	6151.50	5412.55	-5178.55	1593.20	1639964.66	14310100.82	39°24'24.9695"N	81°00'5.7607"W	5418.08	162.899	1.61	-0.45	-1.55	
12154.00	90.030	160.440	6151.93	5507.54	-5267.66	1626.10	1639997.55	14310011.74	39°24'24.0887"N	81°00'5.3415"W	5512.94	162.845	1.60	0.61	1.48	
12249.00	89.450	160.180	6152.37	5602.54	-5357.11	1658.11	1640029.55	14309922.34	39°24'23.2047"N	81°00'4.9337"W	5607.85	162.802	0.67	-0.61	-0.27	
12344.00	89.450	157.940	6153.28	5697.51	-5445.82	1692.05	1640063.48	14309833.65	39°24'22.3279"N	81°00'4.5012"W	5702.64	162.740	2.36	0.00	-2.36	
12438.00	89.690	159.380	6153.98	5791.46	-5533.37	1726.26	1640097.68	14309746.14	39°24'21.4626"N	81°00'4.0655"W	5796.40	162.674	1.55	0.26	1.53	
12533.00	90.180	159.190	6154.09	5886.45	-5622.23	1759.86	1640131.27	14309657.32	39°24'20.5844"N	81°00'3.6373"W	5891.23	162.619	0.55	0.52	-0.20	
12628.00	89.480	159.020	6154.37	5981.43	-5710.98	1793.74	1640165.13	14309568.60	39°24'19.7072"N	81°00'3.2057"W	5986.06	162.563	0.76	-0.74	-0.18	
12722.00	89.600	159.560	6155.13	6075.41	-5798.91	1826.99	1640198.36	14309480.71	39°24'18.8382"N	81°00'2.7822"W	6079.90	162.513	0.59	0.13	0.57	
12817.00	90.430	159.470	6155.10	6170.40	-5887.90	1860.23	1640231.59	14309391.76	39°24'17.9587"N	81°00'2.3587"W	6174.77	162.467	0.88	0.87	-0.09	
12912.00	89.230	157.020	6155.38	6265.33	-5976.12	1895.44	1640266.79	14309303.57	39°24'17.0867"N	81°00'1.9101"W	6269.51	162.403	2.87	-1.26	-2.58	
13006.00	90.490	160.420	6155.61	6359.28	-6063.70	1929.55	1640300.88	14309216.03	39°24'16.2211"N	81°00'1.4756"W	6363.30	162.348	3.86	1.34	3.62	
13101.00	89.480	158.280	6155.64	6454.26	-6152.59	1963.05	1640334.37	14309127.17	39°24'15.3426"N	81°00'1.0488"W	6458.17	162.304	2.49	-1.06	-2.25	
13195.00	89.780	161.300	6156.25	6548.24	-6240.79	1995.52	1640366.82	14309039.01	39°24'14.4708"N	81°00'0.6352"W	6552.06	162.268	3.23	0.32	3.21	
13290.00	89.570	160.430	6156.79	6643.23	-6330.54	2026.66	1640397.95	14308949.30	39°24'13.5838"N	81°00'0.2385"W	6647.03	162.248	0.94	-0.22	-0.92	
13385.00	89.690	160.890	6157.40	6738.23	-6420.18	2058.12	1640429.40	14308859.69	39°24'12.6979"N	80°59'59.8377"W	6742.00	162.226	0.50	0.13	0.48	

RECEIVED
 Office of Oil and Gas
 AUG 21 2023
 WV Department of
 Environmental Protection



Actual Wellpath Report

Martindill Unit 2H AWP Proj: 18471'
Page 7 of 11



REFERENCE WELLPATH IDENTIFICATION			
Operator	ANTERO RESOURCES CORPORATION	Well	Martindill Unit 2H
Field	Tyler	API	47-095-02814-0000
Facility	Wrigley Pad	Wellbore	Martindill Unit 2H AWB
Slot	Slot D		

WELLPATH DATA (202 stations)

MD [ft]	Inclination [°]	Azimuth [°]	TVD [ft]	Vert Sect [ft]	North [ft]	East [ft]	Grid East [US ft]	Grid North [US ft]	Latitude	Longitude	Closure Dist [ft]	Closure Dir [°]	DLS ["/100ft]	Build Rate ["/100ft]	Turn Rate ["/100ft]	Comments
13480.00	89.690	161.180	6157.91	6833.22	-6510.02	2088.99	1640460.26	14308769.89	39°24'11.8099"N	80°59'59.4444"W	6836.97	162.209	0.31	0.00	0.31	
13574.00	89.820	161.770	6158.31	6927.20	-6599.15	2118.86	1640490.11	14308680.80	39°24'10.9290"N	80°59'59.0640"W	6930.97	162.199	0.64	0.14	0.63	
13669.00	89.080	157.000	6159.23	7022.15	-6688.03	2152.29	1640523.54	14308591.95	39°24'10.0505"N	80°59'58.6380"W	7025.82	162.161	5.08	-0.78	-5.02	
13764.00	89.720	161.790	6160.22	7117.11	-6776.92	2185.71	1640556.94	14308503.09	39°24'9.1720"N	80°59'58.2123"W	7120.68	162.124	5.09	0.67	5.04	
13858.00	89.600	158.140	6160.78	7211.09	-6865.22	2217.91	1640589.13	14308414.83	39°24'8.2993"N	80°59'57.8021"W	7214.59	162.096	3.89	-0.13	-3.88	
14048.00	89.140	160.520	6162.87	7401.03	-7042.96	2284.97	1640656.16	14308237.16	39°24'6.5425"N	80°59'56.9479"W	7404.35	162.025	1.28	-0.24	1.25	
14142.00	89.510	161.040	6163.98	7495.02	-7131.72	2315.91	1640687.09	14308148.44	39°24'5.6653"N	80°59'56.5537"W	7498.32	162.010	0.68	0.39	0.55	
14237.00	89.050	160.610	6165.17	7590.01	-7221.44	2347.11	1640718.28	14308058.75	39°24'4.7785"N	80°59'56.1563"W	7593.30	161.995	0.66	-0.48	-0.45	
14331.00	89.170	158.740	6166.63	7683.99	-7309.57	2379.76	1640750.91	14307970.66	39°24'3.9075"N	80°59'55.7405"W	7687.20	161.966	1.99	0.13	-1.99	
14426.00	90.430	161.190	6166.96	7778.98	-7398.82	2412.30	1640783.44	14307881.45	39°24'3.0255"N	80°59'55.3259"W	7782.14	161.942	2.90	1.33	2.58	
14520.00	88.680	160.670	6167.69	7872.97	-7487.65	2443.01	1640814.14	14307792.65	39°24'2.1474"N	80°59'54.9347"W	7876.12	161.930	1.94	-1.86	-0.55	
14615.00	89.260	161.120	6169.40	7967.95	-7577.40	2474.10	1640845.21	14307702.93	39°24'1.2604"N	80°59'54.5387"W	7971.08	161.918	0.77	0.61	0.47	
14709.00	89.660	160.890	6170.29	8061.94	-7666.28	2504.69	1640875.80	14307614.09	39°24'0.3819"N	80°59'54.1490"W	8065.07	161.907	0.49	0.43	-0.24	
14804.00	88.890	160.570	6171.49	8156.92	-7755.95	2536.04	1640907.13	14307524.46	39°23'59.4957"N	80°59'53.7497"W	8160.04	161.893	0.88	-0.81	-0.34	
14899.00	87.750	160.340	6174.27	8251.88	-7845.44	2567.81	1640938.89	14307435.01	39°23'58.6112"N	80°59'53.3451"W	8254.97	161.877	1.22	-1.20	-0.24	
14993.00	89.600	160.800	6176.45	8345.85	-7934.05	2599.07	1640970.13	14307346.43	39°23'57.7354"N	80°59'52.9469"W	8348.91	161.862	2.03	1.97	0.49	
15088.00	89.540	161.030	6177.16	8440.84	-8023.83	2630.13	1641001.18	14307256.69	39°23'56.8481"N	80°59'52.5512"W	8443.90	161.851	0.25	-0.06	0.24	
15183.00	89.320	161.130	6178.11	8535.83	-8113.69	2660.93	1641031.97	14307166.86	39°23'55.9599"N	80°59'52.1589"W	8538.89	161.843	0.25	-0.23	0.11	
15278.00	89.540	160.830	6179.05	8630.82	-8203.50	2691.89	1641062.92	14307077.09	39°23'55.0723"N	80°59'51.7646"W	8633.87	161.833	0.39	0.23	-0.32	
15373.00	89.690	160.930	6179.69	8725.81	-8293.26	2723.01	1641094.02	14306987.37	39°23'54.1851"N	80°59'51.3682"W	8728.85	161.823	0.19	0.16	0.11	
15467.00	90.280	161.000	6179.71	8819.81	-8382.12	2753.66	1641124.67	14306898.54	39°23'53.3069"N	80°59'50.9777"W	8822.84	161.814	0.63	0.63	0.07	
15562.00	90.000	162.320	6179.48	8914.78	-8472.29	2783.56	1641154.55	14306808.41	39°23'52.4156"N	80°59'50.5970"W	8917.84	161.812	1.42	-0.29	1.39	
15657.00	89.320	161.380	6180.05	9009.74	-8562.56	2813.15	1641184.13	14306718.17	39°23'51.5234"N	80°59'50.2201"W	9012.84	161.813	1.22	-0.72	-0.99	
15752.00	90.180	158.790	6180.46	9104.73	-8651.87	2845.50	1641216.47	14306628.90	39°23'50.6407"N	80°59'49.8080"W	9107.79	161.795	2.87	0.91	-2.73	
15847.00	89.110	158.280	6181.05	9199.68	-8740.28	2880.27	1641251.22	14306540.53	39°23'49.7670"N	80°59'49.3652"W	9202.63	161.761	1.25	-1.13	-0.54	
15942.00	90.860	162.390	6181.07	9294.65	-8829.71	2912.23	1641283.17	14306451.13	39°23'48.8830"N	80°59'48.9581"W	9297.58	161.746	4.70	1.84	4.33	
16037.00	90.520	157.120	6179.93	9389.61	-8918.81	2945.09	1641316.01	14306362.07	39°23'48.0024"N	80°59'48.5396"W	9392.48	161.726	5.56	-0.36	-5.55	
16132.00	89.820	159.840	6179.65	9484.55	-9007.18	2979.93	1641350.84	14306273.74	39°23'47.1290"N	80°59'48.0958"W	9487.32	161.694	2.96	-0.74	2.86	
16226.00	89.690	160.180	6180.05	9578.55	-9095.51	3012.07	1641382.97	14306185.43	39°23'46.2559"N	80°59'47.6865"W	9581.28	161.677	0.39	-0.14	0.36	
16416.00	91.390	157.960	6178.26	9768.48	-9272.95	3079.93	1641450.80	14306008.07	39°23'44.5022"N	80°59'46.8222"W	9771.06	161.627	1.47	0.89	-1.17	

RECEIVED
Office of Oil and Gas
AUG 21 2023
WV Department of
Environmental Protection



Actual Wellpath Report

Martindill Unit 2H AWP Proj: 18471'
Page 8 of 11



REFERENCE WELLPATH IDENTIFICATION			
Operator	ANTERO RESOURCES CORPORATION	Well	Martindill Unit 2H
Field	Tyler	API	47-095-02814-0000
Facility	Wrigley Pad	Wellbore	Martindill Unit 2H AWB
Slot	Slot D		

WELLPATH DATA (202 stations) † = interpolated, ‡ = extrapolated station																
MD [ft]	Inclination [°]	Azimuth [°]	TVD [ft]	Vert Sect [ft]	North [ft]	East [ft]	Grid East [US ft]	Grid North [US ft]	Latitude	Longitude	Closure Dist [ft]	Closure Dir [°]	DLS ["/100ft]	Build Rate ["/100ft]	Turn Rate ["/100ft]	Comments
16511.00	89.880	160.860	6177.20	9863.45	-9361.86	3113.33	1641484.19	14305919.19	39°23'43.6234"N	80°59'46.3968"W	9865.97	161.605	3.44	-1.59	3.05	
16606.00	90.000	160.270	6177.30	9958.45	-9451.45	3144.94	1641515.79	14305829.64	39°23'42.7380"N	80°59'45.9942"W	9960.95	161.595	0.63	0.13	-0.62	
16700.00	89.940	159.860	6177.35	10052.44	-9539.82	3176.99	1641547.82	14305741.31	39°23'41.8646"N	80°59'45.5860"W	10054.92	161.581	0.44	-0.06	-0.44	
16794.00	90.150	159.770	6177.28	10146.44	-9628.04	3209.43	1641580.25	14305653.12	39°23'40.9926"N	80°59'45.1729"W	10148.87	161.565	0.24	0.22	-0.10	
16889.00	90.250	159.860	6176.95	10241.44	-9717.21	3242.21	1641613.01	14305563.99	39°23'40.1113"N	80°59'44.7554"W	10243.83	161.548	0.14	0.11	0.09	
16983.00	90.220	159.550	6176.56	10335.43	-9805.37	3274.81	1641645.60	14305475.86	39°23'39.2399"N	80°59'44.3402"W	10337.78	161.532	0.33	-0.03	-0.33	
17077.00	90.520	161.260	6175.96	10429.43	-9893.92	3306.33	1641677.11	14305387.34	39°23'38.3647"N	80°59'43.9387"W	10431.76	161.521	1.85	0.32	1.82	
17172.00	90.280	159.830	6175.29	10524.42	-9983.49	3337.97	1641708.74	14305297.81	39°23'37.4794"N	80°59'43.5357"W	10526.74	161.513	1.53	-0.25	-1.51	
17266.00	87.630	159.860	6177.01	10618.39	-10071.72	3370.35	1641741.11	14305209.62	39°23'36.6074"N	80°59'43.1234"W	10620.67	161.498	2.82	-2.82	0.03	
17361.00	90.120	159.970	6178.87	10713.36	-10160.91	3402.97	1641773.71	14305120.46	39°23'35.7258"N	80°59'42.7080"W	10715.61	161.484	2.62	2.62	0.12	
17456.00	90.250	159.960	6178.56	10808.36	-10250.16	3435.51	1641806.24	14305031.25	39°23'34.8437"N	80°59'42.2935"W	10810.58	161.471	0.14	0.14	-0.01	
17551.00	90.030	160.170	6178.33	10903.36	-10339.47	3467.91	1641838.62	14304941.97	39°23'33.9610"N	80°59'41.8810"W	10905.55	161.458	0.32	-0.23	0.22	
17646.00	89.780	159.950	6178.49	10998.36	-10428.78	3500.30	1641871.01	14304852.71	39°23'33.0783"N	80°59'41.4684"W	11000.52	161.446	0.35	-0.26	-0.23	
17740.00	89.290	161.090	6179.25	11092.35	-10517.39	3531.65	1641902.34	14304764.13	39°23'32.2025"N	80°59'41.0692"W	11094.51	161.438	1.32	-0.52	1.21	
17835.00	90.150	161.640	6179.72	11187.34	-10607.41	3562.00	1641932.68	14304674.15	39°23'31.3128"N	80°59'40.6826"W	11189.50	161.438	1.07	0.91	0.58	
17930.00	90.000	160.870	6179.59	11282.32	-10697.37	3592.53	1641963.20	14304584.22	39°23'30.4236"N	80°59'40.2939"W	11284.50	161.436	0.83	-0.16	-0.81	
18025.00	90.550	161.400	6179.14	11377.31	-10787.26	3623.25	1641993.90	14304494.36	39°23'29.5351"N	80°59'39.9027"W	11379.50	161.434	0.80	0.58	0.56	
18120.00	89.970	160.650	6178.71	11472.30	-10877.10	3654.14	1642024.78	14304404.56	39°23'28.6472"N	80°59'39.5093"W	11474.49	161.430	1.00	-0.61	-0.79	
18215.00	89.850	160.770	6178.85	11567.30	-10966.77	3685.52	1642056.15	14304314.93	39°23'27.7610"N	80°59'39.1097"W	11569.49	161.424	0.18	-0.13	0.13	
18310.00	89.720	160.490	6179.21	11662.30	-11056.39	3717.03	1642087.65	14304225.35	39°23'26.8752"N	80°59'38.7084"W	11664.48	161.418	0.32	-0.14	-0.29	
18405.00	89.880	161.100	6179.54	11757.29	-11146.10	3748.28	1642118.88	14304135.67	39°23'25.9885"N	80°59'38.3105"W	11759.47	161.413	0.66	0.17	0.64	
18471.00	89.880	161.100	6179.68	11823.29	-11208.54	3769.66	1642140.25	14304073.25	39°23'25.3713"N	80°59'38.0383"W	11825.47	161.411	0.00	0.00	0.00	Projected MD at TD: 18471'

RECEIVED
 Office of Oil and Gas
 AUG 21 2023
 WV Department of
 Environmental Protection



Actual Wellpath Report

Martindill Unit 2H AWP Proj: 18471'
Page 9 of 11



REFERENCE WELLPATH IDENTIFICATION			
Operator	ANTERO RESOURCES CORPORATION	Well	Martindill Unit 2H
Field	Tyler	API	47-095-02814-0000
Facility	Wrigley Pad	Wellbore	Martindill Unit 2H AWB
Slot	Slot D		

HOLE & CASING SECTIONS - Ref Wellbore: Martindill Unit 2H AWB Ref Wellpath: Martindill Unit 2H AWP Proj: 18471'									
String/Diameter	Start MD [ft]	End MD [ft]	Interval [ft]	Start TVD [ft]	End TVD [ft]	Start N/S [ft]	Start E/W [ft]	End N/S [ft]	End E/W [ft]
20in Conductor	30.00	130.00	100.00	30.00	130.00	0.00	0.00	-0.07	0.38
17.5in Open Hole	130.00	620.00	490.00	130.00	620.00	-0.07	0.38	-0.96	1.64
13.375in Casing Surface	30.00	600.00	570.00	30.00	600.00	0.00	0.00	-0.92	1.67
12.25in Open Hole	620.00	3244.00	2624.00	620.00	3230.27	-0.96	1.64	107.19	-67.17
9.625in Casing Intermediate	30.00	3214.00	3184.00	30.00	3201.50	0.00	0.00	99.47	-63.59
8.75in Open Hole	3244.00	5279.00	2035.00	3230.27	5181.11	107.19	-67.17	582.16	-390.78
8.5in Open Hole	5279.00	18471.00	13192.00	5181.11	6179.68	582.16	-390.78	-11208.54	3769.66
5.5in Casing Production	30.00	18451.00	18421.00	30.00	6179.64	0.00	0.00	-11189.62	3763.18

RECEIVED
 Office of Oil and Gas
 AUG 21 2023
 WV Department of
 Environmental Protection



Actual Wellpath Report

Martindill Unit 2H AWP Proj: 18471'
Page 10 of 11



REFERENCE WELLPATH IDENTIFICATION

Operator	ANTERO RESOURCES CORPORATION	Well	Martindill Unit 2H
Field	Tyler	API	47-095-02814-0000
Facility	Wrigley Pad	Wellbore	Martindill Unit 2H AWB
Slot	Slot D		

TARGETS

Name	TVD [ft]	North [ft]	East [ft]	Grid East [US ft]	Grid North [US ft]	Latitude	Longitude	Shape
Martindill Unit 2H POE Rev-3	6065.00	139.01	-307.03	1638065.20	14315416.24	39°25'17.5246"N	81°00'29.9755"W	point
Martindill Unit 2H LP Rev-3	6115.00	-105.01	-219.69	1638152.51	14315172.32	39°25'15.1129"N	81°00'28.8622"W	point
Martindill Unit 2H BHL Rev-4	6180.83	-11941.56	4017.16	1642387.65	14303340.53	39°23'18.1263"N	80°59'34.8866"W	point
Martindill Unit 2H BHL Rev-3	6181.90	-12134.29	4086.14	1642456.61	14303147.88	39°23'16.2214"N	80°59'34.0082"W	point
Martindill Unit 2H 50' L/R Hard Line Rev-2	6250.00	-5901.28	1855.06	1640226.43	14309378.38	39°24'17.8264"N	81°00'2.4245"W	rectangle
2D Rectangle 12831.2 x 100.								

WELLPATH COMPOSITION - Ref Wellbore: Martindill Unit 2H AWB Ref Wellpath: Martindill Unit 2H AWP Proj: 18471'

Start MD [ft]	End MD [ft]	Positional Uncertainty Model	Log Name/Comment	Wellbore	Survey Date
30.00	646.00	Gyrodatta 2015 - GC+WIR+DPIPE	01 Gyrodatta MS Gyro <17-1/2"> (100'-646')	Martindill Unit 2H AWB	1/21/2023
646.00	3169.00	BH NaviTrak (2019) (Axial Corr+HRGM)	02 APS EM <12-1/4"> (646')(681'-3169')	Martindill Unit 2H AWB	1/21/2023
3169.00	5206.00	BH NaviTrak (2019) (Axial Corr+HRGM)	03 APS EM <8-3/4"> (3169')(3249'-5206')	Martindill Unit 2H AWB	2/10/2023
5206.00	18471.00	BH AutoTrak Curve/eXpress (2019) (HRGM, Short spacing)	04 BH AT Curve <8-1/2"> (5206')(5254'-18405')	Martindill Unit 2H AWB	2/10/2023

RECEIVED
 Office of Oil and Gas
 AUG 21 2023
 WV Department of
 Environmental Protection



Actual Wellpath Report
 Martindill Unit 2H AWP Proj: 18471'
 Page 11 of 11



REFERENCE WELLPATH IDENTIFICATION			
Operator	ANTERO RESOURCES CORPORATION	Well	Martindill Unit 2H
Field	Tyler	API	47-095-02814-0000
Facility	Wrigley Pad	Wellbore	Martindill Unit 2H AWB
Slot	Slot D		

COMMENTS
<p>Wellpath general comments API: 47-095-02814-0000 BH Job #: 111653845 Rig: H&P 531 Duration: 2/13/2023-2/17/2023 Gyrodata MS Gyro <17-1/2"> (100'-646') APS EM <12-1/4"> (646')(681'-3169') APS EM <8-3/4"> (3169')(3249'-5206') BH AT Curve <8-1/2"> (5206')(5254'-18405') Sycamore: 6009' MD Middlesex: 6143' MD Burkett: 6302' MD Marcellus POE: 6368' MD Projected MD at TD: 18471'</p>

RECEIVED
 Office of Oil and Gas
 AUG 21 2023
 WV Department of
 Environmental Protection