



# ANTERO RESOURCES CORPORATION



Location: Tyler County, WV  
Field: Tyler  
Facility: Thin Air Pad

Slot: Slot 2B  
Well: Gothic Unit 2H  
Wellbore: Gothic Unit 2H PWB

Plot reference wellpath is Gothic Unit 2H PWP Rev-B.0	Grid System: NAD27 / UTM Zone 17 North, US feet
True vertical depths are referenced to H&P 317 (RKB)	North Reference: Grid north
Reference wellpath measured depths are referenced to H&P 317 (RKB)	Scale: True distance
H&P 317 (RKB) to Mean Sea Level: 1225.5 feet	Coordinates are in feet referenced to Slot
Mean Sea Level to Ground level (At Slot: Slot 2B) -1200 feet	Depths are in feet
Offset wellpath MDs are referenced to each path's default MD datum	Created by: edhayanr on 2023-04-25, Database: WA_MPL_EASTERNUS_Dwh

Location Information				
Facility Name	Grid East (US ft)	Grid North (US ft)	Latitude	Longitude
Thin Air Pad	1698787.140	14354225.910	39°31'40.5880"N	80°47'34.7850"W
Slot	Local N (ft)	Local E (ft)	Grid East (US ft)	Grid North (US ft)
Slot 2B	155.67	69.07	1698856.180	14354381.520
Comment	Gothic Unit 2H			
H&P 317 (RKB) to Ground level (At Slot: Slot 2B)				25.5ft
Mean Sea Level to Ground level (At Slot: Slot 2B)				-1200ft
H&P 317 (RKB) to Mean Sea Level				1225.5ft

Well Profile Data								
Design Comment	MD (ft)	Inc (")	Az (°)	TVD (ft)	Local N (ft)	Local E (ft)	DLS (°/100ft)	VS (ft)
Tie On	3497.00	14.770	264.690	3386.28	-46.25	-757.71	0.55	-200.79
Proj. to Bottom	3579.00	14.770	264.690	3465.57	-48.18	-778.52	0.00	-205.68
Drill Out	3659.00	14.770	264.690	3542.93	-50.07	-798.83	0.00	-210.44
End of 3D Arc	3767.90	17.415	267.022	3647.58	-52.20	-828.93	2.50	-218.14
Curve KOP	6364.37	17.415	267.022	6125.00	-92.58	-1804.99	0.00	-430.41
POE	7352.23	73.639	161.167	6855.00	-638.19	-1598.59	8.00	88.08
Landing PL	7556.73	90.000	161.167	6884.00	-829.13	-1533.46	8.00	289.81
BHL	24796.88	90.000	161.167	6884.00	-17146.32	-4031.79	0.00	17529.95

Well Data			
Slot	Well	Wellbore	Wellpath
Slot 2B	Gothic Unit 2H	Gothic Unit 2H AWB	Gothic Unit 2H AWP Proj. 24940'
Slot 2B	Gothic Unit 2H	Gothic Unit 2H PWB	Gothic Unit 2H PWP Rev-B.0

Gyrodata MS Gyro <17-1/2"> (100'-470') : 0.34° Inc, 100.00ft MD, 100.00ft TVD, -0.11ft VS

APS EM <12-1/4"> (470')(505'-3497') : 0.54° Inc, 505.00ft MD, 504.99ft TVD, -0.39ft VS

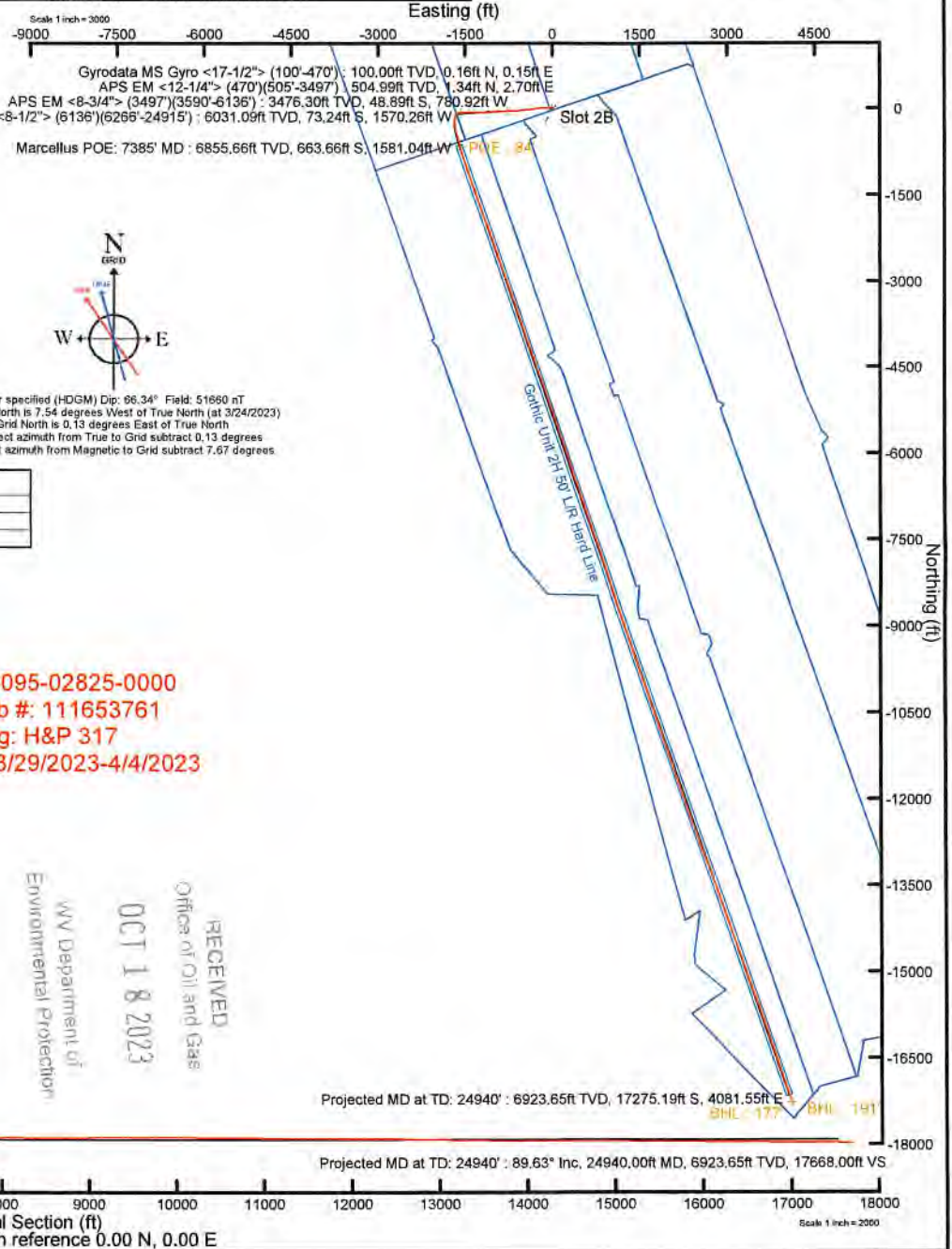
APS EM <8-3/4"> (3497')(3590'-6136') : 14.33° Inc, 3590.00ft MD, 3476.30ft TVD, -205.78ft VS

BH AT Curve <8-1/2"> (6136')(6266'-24915') : 17.27° Inc, 6266.00ft MD, 6031.09ft TVD, -437.50ft VS

Marcellus POE: 7385' MD : 73.55° Inc, 7385.00ft MD, 6855.66ft TVD, 117.84ft VS

API: 47-095-02825-0000  
BH Job #: 111653761  
Rig: H&P 317  
Duration: 3/29/2023-4/4/2023

RECEIVED  
Office of Oil and Gas  
OCT 18 2023  
WV Department of  
Environmental Protection



Vertical Section (ft)  
Azimuth 161.17° with reference 0.00 N, 0.00 E



# Actual Wellpath Report

Gothic Unit 2H AWP Proj: 24940'

Page 1 of 13



REFERENCE WELLPATH IDENTIFICATION			
Operator	ANTERO RESOURCES CORPORATION	Well	Gothic Unit 2H
Field	Tyler	API	47-095-02825-0000
Facility	Thin Air Pad	Wellbore	Gothic Unit 2H AWB
Slot	Slot 2B		

REPORT SETUP INFORMATION			
Projection System	NAD27 / UTM Zone 17 North, US feet	Software System	WellArchitect® 6.0
North Reference	Grid	User	Edsaryar
Scale	0.999604	Report Generated	4/26/2023 at 6:48:48 PM
Convergence at slot	0.13° East	Database	WA_MPL_EASTERNUS_Defn

WELLPATH LOCATION						
	Local coordinates		Grid coordinates		Geographic coordinates	
	North[ft]	East[ft]	Easting[US ft]	Northing[US ft]	Latitude	Longitude
Slot Location	155.67	69.07	1698856.18	14354381.52	39°31'42.1250"N	80°47'33.8990"W
Facility Reference Pt			1698787.14	14354225.91	39°31'40.5880"N	80°47'34.7850"W
Field Reference Pt			0.00	0.00	0°00'0.0000"	85°29'19.3013"W

WELLPATH DATUM			
Calculation method	Minimum curvature	H&P 317 (RKB) to Facility Vertical Datum	1225.50ft
Horizontal Reference Pt	Slot	H&P 317 (RKB) to Mean Sea Level	1225.50ft
Vertical Reference Pt	H&P 317 (RKB)	H&P 317 (RKB) to Ground Level at Slot (Slot 2B)	25.50ft
MD Reference Pt	H&P 317 (RKB)	Section Origin	N 0.00, E 0.00 ft
Field Vertical Reference	Mean Sea Level	Section Azimuth	161.17°

RECEIVED  
 Office of Oil and Gas  
 OCT 18 2023  
 WV Department of  
 Environmental Protection



# Actual Wellpath Report

Gothic Unit 2H AWP Proj: 24940'

Page 2 of 13



REFERENCE WELLPATH IDENTIFICATION				
Operator	ANTERO RESOURCES CORPORATION		Well	Gothic Unit 2H
Field	Tyler		API	47-095-02825-0000
Facility	Thin Air Pad		Wellbore	Gothic Unit 2H AWB
Slot	Slot 2B			

WELLPATH DATA (271 stations) † = interpolated, ‡ = extrapolated station																
MD [ft]	Inclination [°]	Azimuth [°]	TVD [ft]	Vert Sect [ft]	North [ft]	East [ft]	Grid East [US ft]	Grid North [US ft]	Latitude	Longitude	Closure Dist [ft]	Closure Dir [°]	DLS [°/100ft]	Build Rate [°/100ft]	Turn Rate [°/100ft]	Comments
0.00†	0.000	42.580	0.00	0.00	0.00	0.00	1698856.18	14354381.52	39°31'42.1250"N	80°47'33.8990"W	0.00	0.000	0.00	0.00	0.00	
25.50	0.000	42.580	25.50	0.00	0.00	0.00	1698856.18	14354381.52	39°31'42.1250"N	80°47'33.8990"W	0.00	0.000	0.00	0.00	0.00	
100.00	0.340	42.580	100.00	-0.11	0.16	0.15	1698856.33	14354381.68	39°31'42.1266"N	80°47'33.8971"W	0.22	42.580	0.46	0.46	0.00	Gyrodota MS Gyro <17-1/2"> (100'-470')
200.00	0.360	23.720	200.00	-0.48	0.67	0.48	1698856.66	14354382.19	39°31'42.1316"N	80°47'33.8929"W	0.82	35.478	0.12	0.02	-18.86	
300.00	0.400	72.720	300.00	-0.70	1.08	0.94	1698857.12	14354382.58	39°31'42.1354"N	80°47'33.8870"W	1.41	41.452	0.32	0.04	49.00	
400.00	0.480	79.970	399.99	-0.63	1.24	1.68	1698857.86	14354382.76	39°31'42.1372"N	80°47'33.8775"W	2.09	53.675	0.10	0.08	7.25	
470.00	0.620	85.040	469.99	-0.49	1.32	2.35	1698858.53	14354382.84	39°31'42.1380"N	80°47'33.8690"W	2.69	60.647	0.21	0.20	7.24	
505.00	0.540	90.630	504.99	-0.39	1.34	2.70	1698858.88	14354382.85	39°31'42.1381"N	80°47'33.8645"W	3.01	63.702	0.28	-0.23	15.97	APS EM <12-1/4"> (470')(505'-3497')
594.00	0.690	283.240	593.99	-0.54	1.45	2.60	1698858.78	14354382.97	39°31'42.1393"N	80°47'33.8658"W	2.98	60.792	1.37	0.17	-188.08	
684.00	2.710	275.130	683.94	-1.69	1.77	-0.05	1698856.13	14354383.29	39°31'42.1425"N	80°47'33.8995"W	1.77	358.464	2.25	2.24	-9.01	
774.00	4.960	275.150	773.73	-4.13	2.31	-6.04	1698850.14	14354383.83	39°31'42.1479"N	80°47'33.9760"W	6.47	290.899	2.50	2.50	0.02	
863.00	7.620	276.580	862.19	-8.23	3.33	-15.74	1698840.45	14354384.85	39°31'42.1582"N	80°47'34.0997"W	16.09	281.943	2.99	2.99	1.61	
953.00	9.730	276.240	951.16	-14.01	4.84	-29.23	1698826.96	14354386.36	39°31'42.1735"N	80°47'34.2718"W	29.63	279.402	2.35	2.34	-0.38	
1042.00	12.280	275.790	1038.51	-21.14	6.61	-46.12	1698810.08	14354388.13	39°31'42.1914"N	80°47'34.4874"W	46.59	278.158	2.87	2.87	-0.51	
1137.00	15.230	273.810	1130.78	-30.16	8.46	-68.63	1698787.58	14354389.98	39°31'42.2102"N	80°47'34.7746"W	69.15	277.028	3.14	3.11	-2.08	
1231.00	17.610	272.740	1220.94	-40.14	9.96	-95.16	1698761.06	14354391.48	39°31'42.2256"N	80°47'35.1130"W	95.68	275.976	2.55	2.53	-1.14	
1326.00	19.260	270.680	1311.06	-50.66	10.83	-125.18	1698731.05	14354392.35	39°31'42.2349"N	80°47'35.4962"W	125.65	274.947	1.87	1.74	-2.17	
1421.00	19.030	265.810	1400.81	-59.81	9.89	-156.29	1698699.95	14354391.40	39°31'42.2263"N	80°47'35.8933"W	156.61	273.620	1.70	-0.24	-5.13	
1515.00	18.230	262.800	1489.89	-66.64	6.93	-186.17	1698670.09	14354388.44	39°31'42.1977"N	80°47'36.2746"W	186.30	272.131	1.33	-0.85	-3.20	
1609.00	17.820	260.680	1579.28	-71.98	2.75	-214.95	1698641.32	14354384.27	39°31'42.1571"N	80°47'36.6420"W	214.97	270.734	0.82	-0.44	-2.26	
1704.00	17.850	263.690	1669.71	-77.54	-1.20	-243.77	1698612.51	14354380.32	39°31'42.1187"N	80°47'37.0099"W	243.77	269.718	0.97	0.03	3.17	
1798.00	17.860	263.780	1759.18	-83.81	-4.35	-272.41	1698583.87	14354377.18	39°31'42.0882"N	80°47'37.3756"W	272.45	269.086	0.03	0.01	0.10	
1892.00	18.070	261.400	1848.60	-89.55	-8.09	-301.16	1698555.14	14354373.44	39°31'42.0519"N	80°47'37.7426"W	301.27	268.462	0.81	0.22	-2.53	
1987.00	18.130	264.150	1938.90	-95.48	-11.80	-330.43	1698525.88	14354369.73	39°31'42.0159"N	80°47'38.1162"W	330.64	267.955	0.90	0.06	2.89	
2081.00	17.700	264.910	2028.35	-102.16	-14.56	-359.21	1698497.11	14354366.97	39°31'41.9893"N	80°47'38.4836"W	359.51	267.680	0.52	-0.46	0.81	
2175.00	17.790	262.640	2117.87	-108.41	-17.66	-387.69	1698468.65	14354363.86	39°31'41.9592"N	80°47'38.8471"W	388.09	267.391	0.74	0.10	-2.41	
2269.00	18.300	261.210	2207.25	-113.84	-21.76	-416.51	1698439.83	14354359.77	39°31'41.9194"N	80°47'39.2151"W	417.08	267.010	0.72	0.54	-1.52	
2364.00	17.690	264.520	2297.61	-119.77	-25.42	-445.62	1698410.73	14354356.11	39°31'41.8839"N	80°47'39.5867"W	446.35	266.736	1.25	-0.64	3.48	
2458.00	17.780	266.380	2387.14	-126.84	-27.69	-474.16	1698382.21	14354353.85	39°31'41.8621"N	80°47'39.9510"W	474.97	266.658	0.61	0.10	1.98	
2553.00	17.560	264.190	2477.66	-133.87	-30.05	-502.90	1698353.48	14354351.48	39°31'41.8394"N	80°47'40.3178"W	503.79	266.580	0.74	-0.23	-2.31	

RECEIVED  
 Office of Oil and Gas  
 OCT 18 2023  
 WV Department of  
 Environmental Protection



# Actual Wellpath Report

Gothic Unit 2H AWP Proj: 24940'

Page 3 of 13



REFERENCE WELLPATH IDENTIFICATION				
Operator	ANTERO RESOURCES CORPORATION		Well	Gothic Unit 2H
Field	Tyler		API	47-095-02825-0000
Facility	Thin Air Pad		Wellbore	Gothic Unit 2H AWB
Slot	Slot 2B			

WELLPATH DATA (271 stations)																
MD [ft]	Inclination [°]	Azimuth [°]	TVD [ft]	Vert Sect [ft]	North [ft]	East [ft]	Grid East [US ft]	Grid North [US ft]	Latitude	Longitude	Closure Dist [ft]	Closure Dir [°]	DLS ["/100ft]	Build Rate ["/100ft]	Turn Rate ["/100ft]	Comments
2647.00	17.410	261.270	2567.32	-139.53	-33.62	-530.90	1698325.49	14354347.91	39°31'41.8047"N	80°47'40.6753"W	531.97	266.376	0.95	-0.16	-3.11	
2741.00	16.810	263.120	2657.16	-144.81	-37.39	-558.30	1698298.10	14354344.15	39°31'41.7681"N	80°47'41.0250"W	559.55	266.169	0.86	-0.64	1.97	
2836.00	15.690	269.310	2748.37	-151.66	-39.19	-584.78	1698271.63	14354342.35	39°31'41.7509"N	80°47'41.3631"W	586.10	266.166	2.17	-1.18	6.52	
2930.00	15.210	268.730	2838.97	-159.33	-39.61	-609.82	1698246.60	14354341.92	39°31'41.7473"N	80°47'41.6826"W	611.11	266.283	0.54	-0.51	-0.62	
3025.00	14.830	264.530	2930.73	-165.90	-41.05	-634.38	1698222.05	14354340.49	39°31'41.7337"N	80°47'41.9961"W	635.71	266.298	1.21	-0.40	-4.42	
3119.00	14.960	267.480	3021.57	-172.09	-42.73	-658.48	1698197.96	14354338.81	39°31'41.7176"N	80°47'42.3037"W	659.87	266.287	0.82	0.14	3.14	
3213.00	15.720	269.520	3112.22	-179.51	-43.37	-683.34	1698173.12	14354338.17	39°31'41.7118"N	80°47'42.6209"W	684.71	266.369	0.99	0.81	2.17	
3308.00	15.380	269.570	3203.74	-187.54	-43.57	-708.80	1698147.66	14354337.97	39°31'41.7104"N	80°47'42.9459"W	710.14	266.482	0.36	-0.36	0.05	
3402.00	14.980	266.570	3294.46	-194.70	-44.38	-733.39	1698123.08	14354337.15	39°31'41.7029"N	80°47'43.2598"W	734.74	266.536	0.94	-0.43	-3.19	
3497.00	14.770	264.690	3386.28	-200.79	-46.25	-757.71	1698098.77	14354335.29	39°31'41.6851"N	80°47'43.5701"W	759.12	266.507	0.55	-0.22	-1.98	
3590.00	14.330	262.270	3476.30	-205.78	-48.89	-780.92	1698075.57	14354332.65	39°31'41.6594"N	80°47'43.8664"W	782.45	266.418	0.81	-0.47	-2.60	APS EM <8-3/4"> (3497')(3590'-6136')
3684.00	15.180	266.440	3567.20	-211.26	-51.22	-804.73	1698051.77	14354330.32	39°31'41.6370"N	80°47'44.1703"W	806.36	266.358	1.45	0.90	4.44	
3779.00	14.470	264.980	3659.04	-217.37	-53.03	-828.97	1698027.54	14354328.51	39°31'41.6196"N	80°47'44.4797"W	830.66	266.340	0.84	-0.75	-1.54	
3873.00	15.910	268.790	3749.75	-224.07	-54.33	-853.55	1698002.97	14354327.21	39°31'41.6073"N	80°47'44.7934"W	855.28	266.358	1.86	1.53	4.05	
3962.00	17.440	271.700	3835.01	-232.44	-54.19	-879.08	1697977.45	14354327.35	39°31'41.6092"N	80°47'45.1192"W	880.75	266.472	1.96	1.72	3.27	
4056.00	18.170	269.280	3924.51	-241.94	-53.96	-907.81	1697948.73	14354327.58	39°31'41.6122"N	80°47'45.4860"W	909.42	266.598	1.11	0.78	-2.57	
4151.00	20.840	268.160	4014.05	-251.48	-54.69	-939.52	1697917.03	14354326.85	39°31'41.6057"N	80°47'45.8906"W	941.11	266.669	2.84	2.81	-1.18	
4245.00	21.050	265.510	4101.84	-260.55	-56.55	-973.06	1697883.50	14354325.00	39°31'41.5881"N	80°47'46.3187"W	974.70	266.674	1.03	0.22	-2.82	
4340.00	19.850	261.980	4190.86	-267.80	-60.13	-1006.05	1697850.54	14354321.41	39°31'41.5534"N	80°47'46.7398"W	1007.84	266.579	1.81	-1.26	-3.72	
4434.00	19.060	263.390	4279.49	-274.04	-64.13	-1037.10	1697819.50	14354317.42	39°31'41.5146"N	80°47'47.1361"W	1039.08	266.462	0.98	-0.84	1.50	
4529.00	18.270	262.810	4369.49	-280.33	-67.77	-1067.28	1697789.33	14354313.77	39°31'41.4792"N	80°47'47.5214"W	1069.43	266.366	0.85	-0.83	-0.61	
4623.00	16.860	265.490	4459.11	-286.67	-70.69	-1095.49	1697761.13	14354310.86	39°31'41.4510"N	80°47'47.8815"W	1097.77	266.308	1.73	-1.50	2.85	
4717.00	15.360	264.580	4549.41	-292.93	-72.94	-1121.47	1697735.15	14354308.61	39°31'41.4294"N	80°47'48.2132"W	1123.84	266.279	1.62	-1.60	-0.97	
4812.00	13.930	266.340	4641.33	-298.84	-74.86	-1145.41	1697711.22	14354306.69	39°31'41.4110"N	80°47'48.5188"W	1147.85	266.261	1.58	-1.51	1.85	
4906.00	14.500	272.580	4732.45	-306.10	-75.05	-1168.46	1697688.18	14354306.50	39°31'41.4096"N	80°47'48.8129"W	1170.87	266.325	1.74	0.61	6.64	
5001.00	16.380	275.080	4824.02	-315.87	-73.33	-1193.69	1697662.97	14354308.22	39°31'41.4271"N	80°47'49.1348"W	1195.94	266.485	2.10	1.98	2.63	
5095.00	15.620	272.450	4914.38	-325.84	-71.61	-1219.53	1697637.13	14354309.93	39°31'41.4447"N	80°47'49.4646"W	1221.63	266.639	1.12	-0.81	-2.80	
5190.00	15.550	272.430	5005.89	-335.10	-70.53	-1245.03	1697611.64	14354311.02	39°31'41.4560"N	80°47'49.7900"W	1247.03	266.758	0.07	-0.07	-0.02	
5285.00	15.610	269.860	5097.40	-343.81	-70.02	-1270.54	1697586.15	14354311.53	39°31'41.4616"N	80°47'50.1155"W	1272.47	266.846	0.73	0.06	-2.71	
5381.00	15.870	269.390	5189.80	-352.05	-70.19	-1296.58	1697560.12	14354311.36	39°31'41.4605"N	80°47'50.4478"W	1298.48	266.901	0.30	0.27	-0.49	

RECEIVED  
 Office of Oil and Gas  
 OCT 18 2023  
 WV Department of  
 Environmental Protection



# Actual Wellpath Report

Gothic Unit 2H AWP Proj: 24940'  
Page 4 of 13



REFERENCE WELLPATH IDENTIFICATION				
Operator	ANTERO RESOURCES CORPORATION		Well	Gothic Unit 2H
Field	Tyler		API	47-095-02825-0000
Facility	Thin Air Pad		Wellbore	Gothic Unit 2H AWB
Slot	Slot 2B			

WELLPATH DATA (271 stations) † = interpolated, ‡ = extrapolated station																
MD (ft)	Inclination (°)	Azimuth (°)	TVD (ft)	Vert Sect (ft)	North (ft)	East (ft)	Grid East (US ft)	Grid North (US ft)	Latitude	Longitude	Closure Dist (ft)	Closure Dir (°)	DLS (°/100ft)	Build Rate (°/100ft)	Turn Rate (°/100ft)	Comments
5475.00	16.130	268.530	5280.16	-359.97	-70.66	-1322.48	1697534.22	14354310.89	39°31'41.4564"N	80°47'50.7784"W	1324.37	266.942	0.37	0.28	-0.91	
5569.00	15.230	270.020	5370.66	-367.85	-70.99	-1347.88	1697508.83	14354310.56	39°31'41.4537"N	80°47'51.1026"W	1349.75	266.985	1.05	-0.96	1.59	
5664.00	18.730	270.480	5461.50	-376.93	-70.86	-1375.62	1697481.10	14354310.69	39°31'41.4556"N	80°47'51.4566"W	1377.45	267.051	3.69	3.68	0.48	
5758.00	19.160	272.570	5550.41	-387.55	-70.04	-1406.13	1697450.61	14354311.51	39°31'41.4644"N	80°47'51.8458"W	1407.87	267.148	0.85	0.46	2.22	
5853.00	18.530	269.890	5640.32	-398.08	-69.37	-1436.80	1697419.96	14354312.18	39°31'41.4717"N	80°47'52.2372"W	1438.47	267.236	1.13	-0.66	-2.82	
5947.00	19.050	270.610	5729.31	-407.98	-69.24	-1467.07	1697389.69	14354312.31	39°31'41.4737"N	80°47'52.6236"W	1468.71	267.298	0.61	0.55	0.77	
6042.00	19.380	269.730	5819.02	-418.16	-69.15	-1498.34	1697358.44	14354312.40	39°31'41.4752"N	80°47'53.0226"W	1499.93	267.358	0.46	0.35	-0.93	
6136.00	19.390	266.990	5907.69	-427.38	-70.04	-1529.52	1697327.27	14354311.51	39°31'41.4671"N	80°47'53.4205"W	1531.12	267.378	0.97	0.01	-2.91	
6266.00	17.270	263.850	6031.09	-437.50	-73.24	-1570.26	1697286.55	14354308.31	39°31'41.4364"N	80°47'53.9405"W	1571.96	267.330	1.80	-1.63	-2.42	BH AT Curve <8-1/2"> (6136')(6266'-24915')
6361.00	17.710	264.000	6121.70	-443.80	-76.26	-1598.65	1697258.17	14354305.29	39°31'41.4072"N	80°47'54.3029"W	1600.47	267.269	0.47	0.46	0.16	
6455.00	17.710	242.080	6211.34	-444.72	-84.46	-1625.53	1697231.30	14354297.09	39°31'41.3267"N	80°47'54.6463"W	1627.72	267.026	7.05	0.00	-23.32	
6550.00	18.390	214.580	6301.83	-433.48	-103.60	-1646.84	1697209.99	14354277.96	39°31'41.1380"N	80°47'54.9188"W	1650.10	266.400	8.92	0.72	-28.95	
6644.00	22.990	199.610	6389.81	-410.24	-133.14	-1661.44	1697195.40	14354248.44	39°31'40.8464"N	80°47'55.1059"W	1666.76	265.419	7.42	4.89	-15.93	
6739.00	28.820	188.720	6475.27	-375.36	-173.30	-1671.15	1697185.70	14354208.29	39°31'40.4497"N	80°47'55.2310"W	1680.11	264.079	7.90	6.14	-11.46	
6827.00†	35.930	180.922	6549.58	-332.18	-220.16	-1674.79	1697182.06	14354161.44	39°31'39.9866"N	80°47'55.2787"W	1689.19	262.511	9.36	8.08	-8.86	Sycamore: 6827' MD
6833.00	36.430	180.490	6554.42	-328.84	-223.71	-1674.83	1697182.02	14354157.90	39°31'39.9516"N	80°47'55.2794"W	1689.70	262.392	9.36	8.34	-7.20	
6927.00	43.610	174.270	6626.39	-270.82	-283.97	-1671.83	1697185.02	14354097.66	39°31'39.3559"N	80°47'55.2428"W	1695.77	260.360	8.74	7.64	-6.62	
6984.00†	48.293	170.687	6666.02	-230.67	-324.56	-1666.42	1697190.43	14354057.09	39°31'38.9547"N	80°47'55.1749"W	1697.73	258.979	9.37	8.22	-6.29	Middlesex: 6984' MD
7022.00	51.470	168.580	6690.50	-201.93	-353.14	-1661.18	1697195.67	14354028.53	39°31'38.6721"N	80°47'55.1088"W	1698.30	257.999	9.37	8.36	-5.54	
7116.00	57.850	166.960	6744.85	-125.80	-428.02	-1644.90	1697211.93	14353953.67	39°31'37.9316"N	80°47'54.9033"W	1699.68	255.414	6.93	6.79	-1.72	
7152.00†	59.815	166.025	6763.48	-95.13	-457.97	-1637.70	1697219.13	14353923.73	39°31'37.6355"N	80°47'54.8123"W	1700.53	254.377	5.89	5.46	-2.60	Burkett: 7152' MD
7209.00†	62.940	164.618	6790.78	-45.23	-506.36	-1625.02	1697231.81	14353875.36	39°31'37.1569"N	80°47'54.6518"W	1702.08	252.693	5.89	5.48	-2.47	Tully: 7209' MD
7211.00	63.050	164.570	6791.69	-43.45	-508.08	-1624.54	1697232.28	14353873.64	39°31'37.1399"N	80°47'54.6458"W	1702.14	252.633	5.89	5.49	-2.39	
7306.00	68.980	164.850	6830.29	43.14	-591.77	-1601.67	1697255.15	14353789.99	39°31'36.3123"N	80°47'54.3563"W	1707.49	249.722	6.25	6.24	0.29	
7385.00†	73.552	163.145	6855.66	117.84	-663.66	-1581.04	1697275.77	14353718.13	39°31'36.6014"N	80°47'54.0950"W	1714.68	247.229	6.14	5.79	-2.16	Marcellus POE: 7385' MD
7401.00	74.480	162.810	6860.06	133.21	-678.37	-1576.53	1697280.27	14353703.42	39°31'35.4559"N	80°47'54.0380"W	1716.29	246.718	6.14	5.80	-2.09	
7495.00	82.220	162.720	6879.03	225.17	-766.23	-1549.28	1697307.52	14353615.60	39°31'34.5869"N	80°47'53.6926"W	1728.40	243.684	8.23	8.23	-0.10	
7590.00	91.140	163.350	6884.53	319.87	-856.85	-1521.63	1697335.15	14353525.01	39°31'33.6907"N	80°47'53.3424"W	1746.30	240.616	9.41	9.39	0.66	
7684.00	89.080	161.740	6884.35	413.83	-946.51	-1493.44	1697363.33	14353435.38	39°31'32.8039"N	80°47'52.9852"W	1768.12	237.634	2.78	-2.19	-1.71	
7778.00	92.680	160.630	6882.90	507.80	-1035.46	-1463.13	1697393.83	14353346.47	39°31'31.9241"N	80°47'52.6010"W	1792.47	234.713	4.01	3.83	-1.18	

RECEIVED  
 Office of Oil and Gas  
 OCT 18 2023  
 NY Department of  
 Environmental Protection



# Actual Wellpath Report

Gothic Unit 2H AWP Proj: 24940'

Page 5 of 13



REFERENCE WELLPATH IDENTIFICATION				
Operator	ANTERO RESOURCES CORPORATION		Well	Gothic Unit 2H
Field	Tyler		API	47-095-02825-0000
Facility	Thin Air Pad		Wellbore	Gothic Unit 2H AWB
Slot	Slot 2B			

WELLPATH DATA (271 stations)																
MD [ft]	Inclination [°]	Azimuth [°]	TVD [ft]	Vert Sect [ft]	North [ft]	East [ft]	Grid East [US ft]	Grid North [US ft]	Latitude	Longitude	Closure Dist [ft]	Closure Dir [°]	DLS [°/100ft]	Build Rate [°/100ft]	Turn Rate [°/100ft]	Comments
7873.00	89.630	161.010	6880.99	602.77	-1125.16	-1431.93	1697424.82	14353256.81	39°31'31.0369"N	80°47'52.2054"W	1821.10	231.841	3.24	-3.21	0.40	
7968.00	90.090	161.570	6881.22	697.77	-1215.14	-1401.46	1697455.28	14353166.86	39°31'30.1469"N	80°47'51.8191"W	1854.90	229.073	0.76	0.48	0.59	
8062.00	89.630	161.490	6881.45	791.77	-1304.30	-1371.68	1697485.05	14353077.74	39°31'29.2651"N	80°47'51.4416"W	1892.80	226.442	0.50	-0.49	-0.09	
8157.00	91.260	161.410	6880.71	886.76	-1394.36	-1341.46	1697515.26	14352987.72	39°31'28.3743"N	80°47'51.0586"W	1934.88	223.892	1.72	1.72	-0.08	
8251.00	89.510	160.140	6880.08	980.75	-1483.11	-1310.51	1697546.19	14352899.00	39°31'27.4965"N	80°47'50.6662"W	1979.15	221.465	2.30	-1.86	-1.35	
8345.00	88.860	161.270	6881.42	1074.74	-1571.82	-1279.45	1697577.24	14352810.33	39°31'26.6191"N	80°47'50.2724"W	2026.72	219.145	1.39	-0.69	1.20	
8440.00	90.740	161.730	6881.75	1169.73	-1661.90	-1249.31	1697607.37	14352720.28	39°31'25.7280"N	80°47'49.8903"W	2079.11	216.933	2.04	1.98	0.48	
8535.00	89.350	160.960	6881.67	1264.73	-1751.91	-1218.92	1697637.74	14352630.31	39°31'24.8378"N	80°47'49.5051"W	2134.23	214.829	1.67	-1.46	-0.81	
8629.00	91.420	162.080	6881.04	1358.72	-1841.05	-1189.13	1697667.52	14352541.20	39°31'23.9561"N	80°47'49.1275"W	2191.69	212.858	2.50	2.20	1.19	
8723.00	89.260	156.830	6880.48	1452.63	-1929.04	-1156.16	1697700.48	14352453.25	39°31'23.0858"N	80°47'48.7093"W	2248.97	210.938	6.04	-2.30	-5.59	
8818.00	90.740	161.450	6880.48	1547.54	-2017.78	-1122.34	1697734.29	14352364.54	39°31'22.2079"N	80°47'48.2803"W	2308.92	209.084	5.11	1.56	4.86	
8913.00	89.820	159.980	6880.02	1642.54	-2107.45	-1090.96	1697765.65	14352274.91	39°31'21.3211"N	80°47'47.8825"W	2373.09	207.369	1.83	-0.97	-1.55	
9007.00	90.400	161.150	6879.84	1736.53	-2196.09	-1059.69	1697796.91	14352186.30	39°31'20.4443"N	80°47'47.4859"W	2438.39	205.759	1.39	0.62	1.24	
9101.00	90.740	160.880	6878.90	1830.52	-2284.97	-1029.11	1697827.48	14352097.46	39°31'19.5652"N	80°47'47.0983"W	2506.02	204.246	0.46	0.36	-0.29	
9196.00	91.020	161.760	6877.45	1925.51	-2374.96	-998.69	1697857.89	14352007.51	39°31'18.6751"N	80°47'46.7127"W	2576.39	202.807	0.97	0.29	0.93	
9291.00	89.600	160.260	6876.93	2020.51	-2464.78	-967.77	1697888.79	14351917.72	39°31'17.7867"N	80°47'46.3208"W	2647.97	201.437	2.17	-1.49	-1.58	
9385.00	91.290	162.300	6876.20	2114.49	-2553.80	-937.61	1697918.94	14351828.74	39°31'16.9062"N	80°47'45.9385"W	2720.47	200.160	2.82	1.80	2.17	
9479.00	89.820	160.400	6875.29	2208.48	-2642.85	-907.55	1697948.99	14351739.72	39°31'16.0254"N	80°47'45.5575"W	2794.33	198.952	2.56	-1.56	-2.02	
9574.00	90.280	161.640	6875.21	2303.48	-2732.68	-876.66	1697979.87	14351649.33	39°31'15.1369"N	80°47'45.1658"W	2869.86	197.786	1.39	0.48	1.31	
9668.00	90.370	159.640	6874.67	2397.47	-2821.36	-845.50	1698011.02	14351561.28	39°31'14.2597"N	80°47'44.7708"W	2945.33	196.682	2.13	0.10	-2.13	
9763.00	89.780	161.300	6874.55	2492.46	-2910.89	-813.74	1698042.76	14351471.79	39°31'13.3742"N	80°47'44.3681"W	3022.49	195.618	1.85	-0.62	1.75	
9857.00	91.970	161.510	6873.12	2586.44	-2999.97	-783.77	1698072.72	14351382.75	39°31'12.4931"N	80°47'43.9883"W	3100.66	194.642	2.34	2.33	0.22	
9952.00	90.060	160.190	6871.43	2681.42	-3089.69	-752.61	1698103.87	14351293.06	39°31'11.6057"N	80°47'43.5933"W	3180.03	193.690	2.44	-2.01	-1.39	
10047.00	89.750	159.720	6871.59	2776.40	-3178.94	-720.05	1698136.42	14351203.85	39°31'10.7229"N	80°47'43.1804"W	3259.46	192.763	0.59	-0.33	-0.49	
10141.00	88.770	161.290	6872.80	2870.38	-3267.54	-688.68	1698167.77	14351115.29	39°31'9.8465"N	80°47'42.7827"W	3339.32	191.902	1.97	-1.04	1.67	
10236.00	91.970	162.140	6872.19	2965.36	-3357.72	-658.88	1698197.56	14351025.13	39°31'8.9545"N	80°47'42.4051"W	3421.76	191.102	3.49	3.37	0.89	
10331.00	89.570	160.140	6870.91	3060.34	-3447.60	-628.18	1698228.25	14350935.29	39°31'8.0655"N	80°47'42.0159"W	3504.37	190.326	3.29	-2.53	-2.11	
10426.00	91.390	162.320	6870.12	3155.32	-3537.54	-597.62	1698258.80	14350845.39	39°31'7.1760"N	80°47'41.6285"W	3587.66	189.589	2.99	1.92	2.29	
10520.00	90.620	161.120	6868.47	3249.30	-3626.78	-568.14	1698288.27	14350756.18	39°31'6.2933"N	80°47'41.2550"W	3671.01	188.903	1.52	-0.82	-1.28	
10614.00	90.580	161.300	6867.48	3343.30	-3715.77	-537.86	1698318.53	14350667.23	39°31'5.4132"N	80°47'40.8712"W	3754.49	188.236	0.20	-0.04	0.19	

RECEIVED  
 Office of Oil and Gas  
 Environmental Protection  
 WV Department of  
 OCT 18 2023



# Actual Wellpath Report

Gothic Unit 2H AWP Proj: 24940'

Page 6 of 13



## REFERENCE WELLPATH IDENTIFICATION

Operator	ANTERO RESOURCES CORPORATION	Well	Gothic Unit 2H
Field	Tyler	API	47-095-02825-0000
Facility	Thin Air Pad	Wellbore	Gothic Unit 2H AWB
Slot	Slot 2B		

## WELLPATH DATA (271 stations)

MD [ft]	Inclination [°]	Azimuth [°]	TVD [ft]	Vert Sect [ft]	North [ft]	East [ft]	Grid East [US ft]	Grid North [US ft]	Latitude	Longitude	Closure Dist [ft]	Closure Dir [°]	DLS [°/100ft]	Build Rate [°/100ft]	Turn Rate [°/100ft]	Comments
10709.00	90.180	160.820	6866.85	3438.30	-3805.62	-507.03	1698349.35	14350577.42	39°31'4.5244"N	80°47'40.4804"W	3839.25	187.589	0.66	-0.42	-0.51	
10804.00	89.720	161.180	6866.94	3533.29	-3895.44	-476.10	1698380.27	14350487.63	39°31'3.6360"N	80°47'40.0884"W	3924.43	186.968	0.61	-0.48	0.38	
10898.00	90.120	160.190	6867.07	3627.29	-3984.15	-445.01	1698411.35	14350398.95	39°31'2.7585"N	80°47'39.6942"W	4008.93	186.373	1.14	0.43	-1.05	
10993.00	90.800	159.990	6866.31	3722.27	-4073.47	-412.66	1698443.69	14350309.67	39°31'1.8750"N	80°47'39.2841"W	4094.32	185.785	0.75	0.72	-0.21	
11087.00	90.220	161.410	6865.47	3816.26	-4162.18	-381.59	1698474.74	14350221.00	39°31'0.9976"N	80°47'38.8903"W	4179.64	185.238	1.63	-0.62	1.51	
11182.00	90.250	161.730	6865.08	3911.26	-4252.31	-351.56	1698504.76	14350130.91	39°31'0.1062"N	80°47'38.5097"W	4266.81	184.726	0.34	0.30	0.34	
11277.00	90.580	160.440	6864.39	4006.25	-4342.17	-320.76	1698535.54	14350041.08	39°30'59.2173"N	80°47'38.1194"W	4354.00	184.225	1.40	0.35	-1.36	
11371.00	91.020	161.160	6863.08	4100.24	-4430.93	-289.85	1698566.44	14349952.35	39°30'58.3393"N	80°47'37.7275"W	4440.41	183.743	0.90	0.47	0.77	
11466.00	90.550	160.810	6861.78	4195.23	-4520.74	-258.90	1698597.38	14349862.58	39°30'57.4510"N	80°47'37.3353"W	4528.15	183.278	0.62	-0.49	-0.37	
11560.00	90.950	159.770	6860.55	4289.21	-4609.23	-227.20	1698629.07	14349774.13	39°30'56.5758"N	80°47'36.9334"W	4614.82	182.822	1.19	0.43	-1.11	
11655.00	90.620	160.750	6859.25	4384.19	-4698.63	-195.12	1698661.14	14349684.76	39°30'55.6914"N	80°47'36.5266"W	4702.68	182.378	1.09	-0.35	1.03	
11749.00	90.220	159.920	6858.56	4478.17	-4787.15	-163.49	1698692.76	14349596.28	39°30'54.8159"N	80°47'36.1256"W	4789.94	181.956	0.98	-0.43	-0.88	
11844.00	90.180	161.350	6858.22	4573.17	-4876.77	-131.99	1698724.24	14349506.69	39°30'53.9294"N	80°47'35.7263"W	4878.56	181.550	1.51	-0.04	1.51	
11939.00	89.630	160.340	6858.38	4668.16	-4966.51	-100.82	1698755.40	14349416.99	39°30'53.0418"N	80°47'35.3312"W	4967.53	181.163	1.21	-0.58	-1.06	
12034.00	90.280	161.280	6858.46	4763.16	-5056.23	-69.59	1698786.62	14349327.30	39°30'52.1544"N	80°47'34.9354"W	5056.71	180.789	1.20	0.68	0.99	
12128.00	90.120	162.260	6858.13	4857.15	-5145.51	-40.19	1698816.01	14349238.06	39°30'51.2713"N	80°47'34.5629"W	5145.67	180.447	1.06	-0.17	1.04	
12223.00	89.690	159.930	6858.29	4952.15	-5235.38	-9.41	1698846.77	14349148.23	39°30'50.3824"N	80°47'34.1728"W	5235.39	180.103	2.49	-0.45	-2.45	
12318.00	90.710	160.820	6857.95	5047.13	-5324.86	22.50	1698878.67	14349058.78	39°30'49.4973"N	80°47'33.7683"W	5324.90	179.758	1.42	1.07	0.94	
12412.00	90.250	160.880	6857.17	5141.13	-5413.65	53.33	1698909.49	14348970.02	39°30'48.6190"N	80°47'33.3775"W	5413.91	179.436	0.49	-0.49	0.06	
12507.00	90.060	161.030	6856.91	5236.13	-5503.45	84.33	1698940.48	14348880.26	39°30'47.7308"N	80°47'32.9846"W	5504.10	179.122	0.25	-0.20	0.16	
12602.00	90.060	160.980	6856.81	5331.13	-5593.28	115.25	1698971.39	14348790.47	39°30'46.8423"N	80°47'32.5927"W	5594.47	178.820	0.05	0.00	-0.05	
12697.00	90.250	161.400	6856.55	5426.13	-5683.20	145.88	1699002.00	14348700.58	39°30'45.9529"N	80°47'32.2046"W	5685.08	178.530	0.49	0.20	0.44	
12791.00	89.380	160.890	6856.86	5520.12	-5772.16	176.26	1699032.37	14348611.66	39°30'45.0730"N	80°47'31.8196"W	5774.85	178.251	1.07	-0.93	-0.54	
12886.00	90.030	160.830	6857.35	5615.12	-5861.91	207.41	1699063.51	14348521.95	39°30'44.1853"N	80°47'31.4248"W	5865.57	177.974	0.69	0.68	-0.06	
12980.00	90.060	160.960	6857.27	5709.12	-5950.73	238.17	1699094.26	14348433.16	39°30'43.3067"N	80°47'31.0349"W	5955.49	177.708	0.14	0.03	0.14	
13075.00	89.480	160.760	6857.65	5804.12	-6040.47	269.32	1699125.40	14348343.45	39°30'42.4190"N	80°47'30.6401"W	6046.48	177.447	0.65	-0.61	-0.21	
13169.00	89.350	162.390	6858.61	5898.11	-6129.65	299.03	1699155.09	14348254.31	39°30'41.5370"N	80°47'30.2637"W	6136.94	177.207	1.74	-0.14	1.73	
13264.00	90.370	162.080	6858.85	5993.09	-6220.12	328.02	1699184.06	14348163.88	39°30'40.6422"N	80°47'29.8966"W	6228.76	176.981	1.12	1.07	-0.33	
13358.00	89.290	161.570	6859.12	6087.08	-6309.43	357.34	1699213.37	14348074.61	39°30'39.7589"N	80°47'29.5251"W	6319.54	176.759	1.27	-1.15	-0.54	
13452.00	88.800	162.300	6860.69	6181.06	-6398.78	386.48	1699242.51	14347985.29	39°30'38.8751"N	80°47'29.1559"W	6410.44	176.544	0.94	-0.52	0.78	

RECEIVED  
Office of Oil and Gas  
OCT 18 2023  
WV Department of  
Environmental Protection



# Actual Wellpath Report

Gothic Unit 2H AWP Proj: 24940'

Page 7 of 13



REFERENCE WELLPATH IDENTIFICATION				
Operator	ANTERO RESOURCES CORPORATION		Well	Gothic Unit 2H
Field	Tyler		API	47-095-02825-0000
Facility	Thin Air Pad		Wellbore	Gothic Unit 2H AWP
Slot	Slot 2B			

WELLPATH DATA (271 stations)																
MD [ft]	Inclination [°]	Azimuth [°]	TVD [ft]	Vert Sect [ft]	North [ft]	East [ft]	Grid East [US ft]	Grid North [US ft]	Latitude	Longitude	Closure Dist [ft]	Closure Dir [°]	DLS [°/100ft]	Build Rate [°/100ft]	Turn Rate [°/100ft]	Comments
13547.00	89.820	161.470	6861.84	6276.04	-6489.06	416.02	1699272.03	14347895.04	39°30'37.9822"N	80°47'28.7817"W	6502.38	176.332	1.38	1.07	-0.87	
13642.00	90.060	162.450	6861.94	6371.03	-6579.39	445.43	1699301.44	14347804.75	39°30'37.0887"N	80°47'28.4091"W	6594.45	176.127	1.06	0.25	1.03	
13736.00	89.110	161.170	6862.62	6465.02	-6668.69	474.78	1699330.77	14347715.49	39°30'36.2055"N	80°47'28.0373"W	6685.57	175.928	1.70	-1.01	-1.36	
13831.00	91.290	161.790	6862.28	6560.01	-6758.76	504.95	1699360.93	14347625.45	39°30'35.3146"N	80°47'27.6550"W	6777.60	175.727	2.39	2.29	0.65	
13926.00	88.770	159.170	6862.23	6654.99	-6848.29	536.69	1699392.65	14347535.96	39°30'34.4291"N	80°47'27.2528"W	6869.28	175.519	3.83	-2.65	-2.76	
14020.00	90.310	163.040	6862.99	6748.97	-6937.20	567.12	1699423.07	14347447.08	39°30'33.5496"N	80°47'26.8671"W	6960.34	175.326	4.43	1.64	4.12	
14115.00	89.260	161.410	6863.35	6843.94	-7027.66	596.12	1699452.06	14347356.66	39°30'32.6549"N	80°47'26.4998"W	7052.90	175.152	2.04	-1.11	-1.72	
14210.00	90.250	161.450	6863.75	6938.94	-7117.71	626.37	1699482.30	14347266.64	39°30'31.7642"N	80°47'26.1165"W	7145.22	174.971	1.04	1.04	0.04	
14304.00	90.180	161.790	6863.40	7032.94	-7206.91	656.01	1699511.93	14347177.48	39°30'30.8819"N	80°47'25.7410"W	7236.71	174.799	0.37	-0.07	0.36	
14399.00	90.400	161.010	6862.92	7127.94	-7296.95	686.31	1699542.22	14347087.48	39°30'29.9913"N	80°47'25.3571"W	7329.15	174.627	0.85	0.23	-0.82	
14493.00	90.650	162.140	6862.06	7221.93	-7386.13	716.02	1699571.92	14346998.33	39°30'29.1093"N	80°47'24.9807"W	7420.75	174.463	1.23	0.27	1.20	
14588.00	89.910	161.720	6861.59	7316.92	-7476.44	745.49	1699601.37	14346908.06	39°30'28.2160"N	80°47'24.6075"W	7513.51	174.306	0.90	-0.78	-0.44	
14682.00	89.850	159.940	6861.79	7410.91	-7565.22	776.35	1699632.22	14346819.31	39°30'27.3378"N	80°47'24.2163"W	7604.95	174.141	1.89	-0.06	-1.89	
14777.00	89.480	162.540	6862.35	7505.90	-7655.17	806.90	1699662.76	14346729.40	39°30'26.4482"N	80°47'23.8293"W	7697.57	173.983	2.76	-0.39	2.74	
14871.00	90.220	161.230	6862.59	7599.89	-7744.50	836.13	1699691.98	14346640.10	39°30'25.5646"N	80°47'23.4590"W	7789.51	173.838	1.60	0.79	-1.39	
14966.00	89.200	161.690	6863.07	7694.89	-7834.57	866.33	1699722.17	14346550.07	39°30'24.6737"N	80°47'23.0764"W	7882.32	173.690	1.18	-1.07	0.48	
15060.00	90.890	162.130	6863.00	7788.88	-7923.92	895.52	1699751.35	14346460.75	39°30'23.7900"N	80°47'22.7067"W	7974.36	173.552	1.86	1.80	0.47	
15155.00	89.820	161.740	6862.41	7883.86	-8014.23	924.98	1699780.79	14346370.48	39°30'22.8967"N	80°47'22.3335"W	8067.44	173.416	1.20	-1.13	-0.41	
15249.00	90.030	161.660	6862.53	7977.86	-8103.48	954.49	1699810.30	14346281.27	39°30'22.0139"N	80°47'21.9596"W	8159.50	173.282	0.24	0.22	-0.09	
15344.00	90.520	162.660	6862.08	8072.84	-8193.91	983.60	1699839.39	14346190.87	39°30'21.1195"N	80°47'21.5910"W	8252.73	173.155	1.17	0.52	1.05	
15438.00	90.030	161.700	6861.63	8166.83	-8283.40	1012.36	1699868.14	14346101.42	39°30'20.2344"N	80°47'21.2267"W	8345.03	173.032	1.15	-0.52	-1.02	
15533.00	88.860	160.280	6862.55	8261.82	-8373.21	1043.31	1699899.07	14346011.64	39°30'19.3461"N	80°47'20.8347"W	8437.96	172.898	1.94	-1.23	-1.49	
15627.00	90.400	161.610	6863.15	8355.81	-8462.05	1073.99	1699929.74	14345922.84	39°30'18.4673"N	80°47'20.4458"W	8529.93	172.767	2.18	1.64	1.41	
15722.00	89.970	162.940	6862.85	8450.79	-8552.54	1102.91	1699958.66	14345832.39	39°30'17.5723"N	80°47'20.0796"W	8623.36	172.652	1.47	-0.45	1.40	
15816.00	90.120	161.770	6862.77	8544.77	-8642.12	1131.41	1699987.14	14345742.85	39°30'16.6864"N	80°47'19.7187"W	8715.86	172.541	1.25	0.16	-1.24	
15911.00	90.000	160.870	6862.67	8639.77	-8732.11	1161.83	1700017.55	14345652.89	39°30'15.7962"N	80°47'19.3333"W	8809.06	172.421	0.96	-0.13	-0.95	
16005.00	89.690	161.560	6862.93	8733.76	-8821.10	1192.10	1700047.81	14345563.93	39°30'14.9160"N	80°47'18.9498"W	8901.29	172.304	0.80	-0.33	0.73	
16100.00	90.220	161.610	6863.00	8828.76	-8911.24	1222.11	1700077.81	14345473.83	39°30'14.0244"N	80°47'18.5696"W	8994.65	172.191	0.56	0.56	0.05	
16194.00	90.000	161.120	6862.82	8922.76	-9000.31	1252.15	1700107.83	14345384.79	39°30'13.1434"N	80°47'18.1891"W	9086.99	172.080	0.57	-0.23	-0.52	
16289.00	90.650	161.830	6862.28	9017.76	-9090.38	1282.33	1700138.00	14345294.76	39°30'12.2625"N	80°47'17.8068"W	9180.38	171.971	1.01	0.68	0.75	

RECEIVED  
 Office of Oil and Gas  
 OCT 18 2023  
 WY Department of  
 Environmental Protection





# Actual Wellpath Report

Gothic Unit 2H AWP Proj: 24940'

Page 8 of 13



REFERENCE WELLPATH IDENTIFICATION				
Operator	ANTERO RESOURCES CORPORATION		Well	Gothic Unit 2H
Field	Tyler		API	47-095-02825-0000
Facility	Thin Air Pad		Wellbore	Gothic Unit 2H AWB
Slot	Slot 2B			

WELLPATH DATA (271 stations)																
MD [ft]	Inclination [°]	Azimuth [°]	TVD [ft]	Vert Sect [ft]	North [ft]	East [ft]	Grid East [US ft]	Grid North [US ft]	Latitude	Longitude	Closure Dist [ft]	Closure Dir [°]	DLS ["/100ft]	Build Rate ["/100ft]	Turn Rate ["/100ft]	Comments
16383.00	89.820	161.490	6861.90	9111.75	-9179.61	1311.91	1700167.57	14345205.57	39°30'11.3700"N	80°47'17.4321"W	9272.88	171.867	0.95	-0.88	-0.36	
16478.00	90.310	161.810	6861.79	9206.75	-9269.78	1341.82	1700197.46	14345115.43	39°30'10.4781"N	80°47'17.0533"W	9366.39	171.764	0.62	0.52	0.34	
16572.00	90.430	161.660	6861.18	9300.74	-9359.04	1371.28	1700226.91	14345026.21	39°30'9.5952"N	80°47'16.6801"W	9458.96	171.664	0.20	0.13	-0.16	
16667.00	90.180	161.410	6860.68	9395.74	-9449.15	1401.37	1700256.99	14344936.14	39°30'8.7039"N	80°47'16.2990"W	9552.50	171.564	0.37	-0.26	-0.26	
16761.00	90.090	161.560	6860.46	9489.74	-9538.28	1431.21	1700286.83	14344847.04	39°30'7.8223"N	80°47'15.9209"W	9645.06	171.466	0.19	-0.10	0.16	
16856.00	90.340	161.760	6860.10	9584.73	-9628.45	1461.11	1700316.71	14344756.90	39°30'6.9304"N	80°47'15.5422"W	9738.68	171.371	0.34	0.26	0.21	
16951.00	89.510	161.150	6860.22	9679.73	-9718.52	1491.32	1700346.91	14344666.87	39°30'6.0395"N	80°47'15.1595"W	9832.28	171.276	1.08	-0.87	-0.64	
17045.00	89.750	161.260	6860.83	9773.73	-9807.51	1521.61	1700377.18	14344577.92	39°30'5.1593"N	80°47'14.7758"W	9924.84	171.181	0.28	0.26	0.12	
17140.00	89.880	161.440	6861.14	9868.73	-9897.52	1551.99	1700407.55	14344487.94	39°30'4.2690"N	80°47'14.3910"W	10018.46	171.088	0.23	0.14	0.19	
17234.00	89.420	161.040	6861.71	9962.72	-9986.52	1582.22	1700437.77	14344398.98	39°30'3.3887"N	80°47'14.0080"W	10111.08	170.997	0.65	-0.49	-0.43	
17329.00	90.310	160.480	6861.93	10057.72	-10076.21	1613.52	1700469.06	14344309.32	39°30'2.5015"N	80°47'13.6114"W	10204.58	170.902	1.11	0.94	-0.59	
17518.00	89.290	161.890	6862.59	10246.71	-10255.11	1674.47	1700529.99	14344130.50	39°30'0.7320"N	80°47'12.8392"W	10390.91	170.726	0.92	-0.54	0.75	
17613.00	88.740	162.290	6864.23	10341.68	-10345.49	1703.68	1700559.18	14344040.15	39°29'59.8380"N	80°47'12.4693"W	10484.83	170.649	0.72	-0.58	0.42	
17707.00	89.050	161.320	6866.04	10435.66	-10434.77	1733.03	1700588.52	14343950.90	39°29'58.9549"N	80°47'12.0977"W	10577.70	170.570	1.08	0.33	-1.03	
17802.00	90.030	161.200	6866.80	10530.66	-10524.73	1763.55	1700619.03	14343860.98	39°29'58.0651"N	80°47'11.7111"W	10671.46	170.488	1.04	1.03	-0.13	
17896.00	89.880	161.760	6866.88	10624.65	-10613.86	1793.41	1700648.87	14343771.88	39°29'57.1835"N	80°47'11.3329"W	10764.31	170.409	0.82	-0.16	0.60	
17991.00	89.570	161.910	6867.33	10719.65	-10704.13	1823.02	1700678.48	14343681.66	39°29'56.2907"N	80°47'10.9578"W	10858.26	170.335	0.36	-0.33	0.16	
18085.00	89.820	161.450	6867.83	10813.64	-10793.36	1852.57	1700708.01	14343592.46	39°29'55.4081"N	80°47'10.5836"W	10951.19	170.261	0.56	0.27	-0.49	
18180.00	89.450	162.120	6868.44	10908.63	-10883.60	1882.26	1700737.69	14343502.26	39°29'54.5155"N	80°47'10.2075"W	11045.16	170.188	0.81	-0.39	0.71	
18274.00	89.230	161.080	6869.52	11002.62	-10972.78	1911.93	1700767.35	14343413.10	39°29'53.6334"N	80°47'9.8318"W	11138.11	170.116	1.13	-0.23	-1.11	
18369.00	89.570	161.390	6870.52	11097.62	-11062.73	1942.49	1700797.90	14343323.19	39°29'52.7437"N	80°47'9.4447"W	11231.97	170.041	0.48	0.36	0.33	
18464.00	89.480	161.790	6871.30	11192.61	-11152.86	1972.49	1700827.89	14343233.10	39°29'51.8522"N	80°47'9.0647"W	11325.95	169.970	0.43	-0.09	0.42	
18558.00	90.150	161.860	6871.61	11286.60	-11242.17	2001.81	1700857.19	14343143.82	39°29'50.9688"N	80°47'8.6934"W	11419.01	169.904	0.72	0.71	0.07	
18653.00	89.260	161.680	6872.10	11381.60	-11332.40	2031.53	1700886.90	14343053.63	39°29'50.0763"N	80°47'8.3171"W	11513.06	169.837	0.96	-0.94	-0.19	
18748.00	89.750	161.760	6872.92	11476.59	-11422.60	2061.33	1700916.69	14342963.46	39°29'49.1841"N	80°47'7.9397"W	11607.11	169.770	0.52	0.52	0.08	
18842.00	89.110	161.610	6873.85	11570.58	-11511.84	2090.86	1700946.21	14342874.26	39°29'48.3015"N	80°47'7.5656"W	11700.18	169.706	0.70	-0.68	-0.16	
18936.00	89.630	161.320	6874.89	11664.57	-11600.96	2120.74	1700976.08	14342785.18	39°29'47.4200"N	80°47'7.1872"W	11793.21	169.640	0.63	0.55	-0.31	
19031.00	89.910	161.340	6875.27	11759.57	-11690.96	2151.15	1701006.48	14342695.22	39°29'46.5298"N	80°47'6.8020"W	11887.22	169.574	0.30	0.29	0.02	
19126.00	89.260	161.520	6875.96	11854.57	-11781.01	2181.41	1701036.72	14342605.20	39°29'45.6391"N	80°47'6.4188"W	11981.26	169.510	0.71	-0.68	0.19	
19221.00	90.120	160.980	6876.47	11949.56	-11870.96	2211.94	1701067.24	14342515.28	39°29'44.7493"N	80°47'6.0321"W	12075.28	169.445	1.07	0.91	-0.57	

RECEIVED  
 Office of Oil and Gas  
 Environmental Protection  
 OCT 18 2023  
 WY Department of  
 Environmental Protection



# Actual Wellpath Report

Gothic Unit 2H AWP Proj: 24940'

Page 9 of 13



## REFERENCE WELLPATH IDENTIFICATION

Operator	ANTERO RESOURCES CORPORATION	Well	Gothic Unit 2H
Field	Tyler	API	47-095-02825-0000
Facility	Thin Air Pad	Wellbore	Gothic Unit 2H AWB
Slot	Slot 2B		

## WELLPATH DATA (271 stations)

MD [ft]	Inclination [°]	Azimuth [°]	TVD [ft]	Vert Sect [ft]	North [ft]	East [ft]	Grid East [US ft]	Grid North [US ft]	Latitude	Longitude	Closure Dist [ft]	Closure Dir [°]	DLS [°/100ft]	Build Rate [°/100ft]	Turn Rate [°/100ft]	Comments
19315.00	89.350	161.590	6876.90	12043.56	-11959.99	2242.10	1701097.39	14342426.29	39°29'43.8687"N	80°47'5.6501"W	12168.34	169.382	1.05	-0.82	0.65	
19410.00	89.540	161.550	6877.82	12138.55	-12050.11	2272.13	1701127.41	14342336.20	39°29'42.9773"N	80°47'5.2697"W	12262.46	169.322	0.20	0.20	-0.04	
19504.00	89.510	160.400	6878.60	12232.55	-12138.98	2302.78	1701158.04	14342247.38	39°29'42.0983"N	80°47'4.8816"W	12355.46	169.259	1.22	-0.03	-1.22	
19598.00	89.690	161.020	6879.26	12326.54	-12227.70	2333.83	1701189.08	14342158.69	39°29'41.2207"N	80°47'4.4882"W	12448.43	169.194	0.69	0.19	0.66	
19693.00	89.080	160.420	6880.28	12421.53	-12317.36	2365.19	1701220.43	14342069.06	39°29'40.3338"N	80°47'4.0908"W	12542.39	169.130	0.90	-0.64	-0.63	
19787.00	89.420	160.400	6881.51	12515.52	-12405.91	2396.71	1701251.93	14341980.55	39°29'39.4579"N	80°47'3.6916"W	12635.30	169.066	0.36	0.36	-0.02	
19882.00	89.050	161.310	6882.78	12610.51	-12495.65	2427.86	1701283.07	14341890.84	39°29'38.5702"N	80°47'3.2969"W	12729.33	169.005	1.03	-0.39	0.96	
19977.00	89.110	160.170	6884.30	12705.49	-12585.32	2459.19	1701314.39	14341801.21	39°29'37.6832"N	80°47'2.9000"W	12823.33	168.944	1.20	0.06	-1.20	
20071.00	89.110	160.120	6885.76	12799.46	-12673.72	2491.11	1701346.30	14341712.84	39°29'36.8088"N	80°47'2.4955"W	12916.22	168.880	0.05	0.00	-0.05	
20166.00	89.570	160.490	6886.86	12894.45	-12763.16	2523.13	1701378.30	14341623.44	39°29'35.9241"N	80°47'2.0899"W	13010.16	168.817	0.62	0.48	0.39	
20260.00	89.420	160.890	6887.69	12988.44	-12851.87	2554.21	1701409.37	14341534.77	39°29'35.0466"N	80°47'1.6961"W	13103.22	168.759	0.45	-0.16	0.43	
20355.00	89.420	159.410	6888.65	13083.42	-12941.21	2586.47	1701441.62	14341445.46	39°29'34.1628"N	80°47'1.2874"W	13197.15	168.698	1.56	0.00	-1.56	
20450.00	88.980	160.350	6889.97	13178.38	-13030.41	2619.14	1701474.28	14341356.30	39°29'33.2805"N	80°47'0.8734"W	13291.03	168.635	1.09	-0.46	0.99	
20544.00	89.420	160.580	6891.29	13272.37	-13118.99	2650.57	1701505.70	14341267.76	39°29'32.4043"N	80°47'0.4752"W	13384.07	168.578	0.53	0.47	0.24	
20639.00	89.260	160.570	6892.38	13367.35	-13208.57	2682.16	1701537.27	14341178.21	39°29'31.5181"N	80°47'0.0750"W	13478.15	168.521	0.17	-0.17	-0.01	
20828.00	89.010	160.620	6893.23	13556.32	-13386.82	2744.95	1701600.04	14341000.03	39°29'29.7550"N	80°46'59.2796"W	13665.34	168.412	0.13	-0.13	0.03	
20922.00	89.080	160.550	6896.80	13650.30	-13475.46	2776.19	1701631.27	14340911.43	39°29'28.8782"N	80°46'58.8838"W	13758.46	168.359	0.11	0.07	-0.07	
21017.00	89.050	160.870	6898.35	13745.29	-13565.11	2807.57	1701662.63	14340821.81	39°29'27.9913"N	80°46'58.4863"W	13852.61	168.307	0.34	-0.03	0.34	
21112.00	89.600	160.560	6899.47	13840.28	-13654.78	2838.94	1701693.99	14340732.18	39°29'27.1044"N	80°46'58.0889"W	13946.77	168.255	0.66	0.58	-0.33	
21206.00	89.480	160.780	6900.23	13934.27	-13743.47	2870.06	1701725.09	14340643.52	39°29'26.2270"N	80°46'57.6948"W	14039.95	168.204	0.27	-0.13	0.23	
21300.00	89.480	160.850	6901.08	14028.27	-13832.25	2900.95	1701755.97	14340554.78	39°29'25.3489"N	80°46'57.3036"W	14133.17	168.155	0.07	0.00	0.07	
21395.00	89.750	160.760	6901.72	14123.26	-13921.97	2932.18	1701787.19	14340465.10	39°29'24.4615"N	80°46'56.9079"W	14227.40	168.106	0.30	0.28	-0.09	
21490.00	89.820	160.580	6902.07	14218.26	-14011.61	2963.63	1701818.63	14340375.49	39°29'23.5747"N	80°46'56.5096"W	14321.60	168.057	0.20	0.07	-0.19	
21584.00	91.170	162.300	6901.26	14312.25	-14100.71	2993.54	1701848.53	14340286.42	39°29'22.6934"N	80°46'56.1308"W	14414.97	168.014	2.33	1.44	1.83	
21678.00	89.540	160.530	6900.68	14406.24	-14189.80	3023.50	1701878.48	14340197.37	39°29'21.8122"N	80°46'55.7514"W	14508.34	167.972	2.58	-1.73	-1.88	
21773.00	89.720	160.970	6901.29	14501.23	-14279.49	3054.82	1701909.78	14340107.72	39°29'20.9250"N	80°46'55.3547"W	14602.59	167.925	0.50	0.19	0.46	
21867.00	90.650	160.830	6900.99	14595.23	-14368.31	3085.58	1701940.53	14340018.93	39°29'20.0464"N	80°46'54.9652"W	14695.89	167.880	1.00	0.99	-0.15	
21962.00	89.910	160.380	6900.52	14690.22	-14457.92	3117.12	1701972.06	14339929.36	39°29'19.1600"N	80°46'54.5655"W	14790.13	167.833	0.91	-0.78	-0.47	
22056.00	89.880	160.570	6900.70	14784.22	-14546.51	3148.54	1702003.47	14339840.80	39°29'18.2837"N	80°46'54.1676"W	14883.36	167.787	0.20	-0.03	0.20	
22150.00	90.000	160.260	6900.80	14878.21	-14635.07	3180.05	1702034.96	14339752.27	39°29'17.4076"N	80°46'53.7684"W	14976.59	167.741	0.35	0.13	-0.33	

RECEIVED  
 Office of Oil and Gas  
 OCT 18 2023  
 WV Department of  
 Environmental Protection



# Actual Wellpath Report

Gothic Unit 2H AWP Proj: 24940'

Page 10 of 13



REFERENCE WELLPATH IDENTIFICATION			
Operator	ANTERO RESOURCES CORPORATION	Well	Gothic Unit 2H
Field	Tyler	API	47-095-02825-0000
Facility	Thin Air Pad	Wellbore	Gothic Unit 2H AWB
Slot	Slot 2B		

WELLPATH DATA (271 stations)																
MD [ft]	Inclination [°]	Azimuth [°]	TVD [ft]	Vert Sect [ft]	North [ft]	East [ft]	Grid East [US ft]	Grid North [US ft]	Latitude	Longitude	Closure Dist [ft]	Closure Dir [°]	DLS ["/100ft]	Build Rate ["/100ft]	Turn Rate ["/100ft]	Comments
22245.00	89.570	160.570	6901.15	14973.20	-14724.58	3211.89	1702066.79	14339662.80	39°29'16.5223"N	80°46'53.3650"W	15070.81	167.695	0.56	-0.45	0.33	
22339.00	89.600	161.210	6901.83	15067.19	-14813.39	3242.67	1702097.56	14339574.02	39°29'15.6437"N	80°46'52.9753"W	15164.15	167.653	0.68	0.03	0.68	
22434.00	89.540	160.740	6902.55	15162.19	-14903.20	3273.63	1702128.51	14339484.25	39°29'14.7554"N	80°46'52.5831"W	15258.51	167.611	0.50	-0.06	-0.49	
22528.00	90.220	161.270	6902.74	15256.19	-14992.08	3304.23	1702159.09	14339395.40	39°29'13.8762"N	80°46'52.1956"W	15351.89	167.571	0.92	0.72	0.56	
22623.00	89.720	160.870	6902.79	15351.19	-15081.94	3335.05	1702189.90	14339305.58	39°29'12.9873"N	80°46'51.8053"W	15446.28	167.531	0.67	-0.53	-0.42	
22718.00	89.260	160.240	6903.64	15446.18	-15171.52	3366.67	1702221.51	14339216.04	39°29'12.1013"N	80°46'51.4048"W	15540.58	167.488	0.82	-0.48	-0.66	
22813.00	89.720	160.460	6904.48	15541.17	-15260.99	3398.62	1702253.44	14339126.61	39°29'11.2163"N	80°46'51.0001"W	15634.84	167.445	0.54	0.48	0.23	
22907.00	89.480	160.650	6905.14	15635.16	-15349.62	3429.91	1702284.72	14339038.01	39°29'10.3395"N	80°46'50.6038"W	15728.16	167.404	0.33	-0.26	0.20	
23001.00	89.230	160.410	6906.20	15729.15	-15438.24	3461.24	1702316.04	14338949.43	39°29'9.4629"N	80°46'50.2069"W	15821.49	167.363	0.37	-0.27	-0.26	
23096.00	89.510	160.410	6907.24	15824.13	-15527.74	3493.09	1702347.88	14338859.97	39°29'8.5776"N	80°46'49.8035"W	15915.79	167.322	0.29	0.29	0.00	
23190.00	89.320	160.550	6908.20	15918.12	-15616.33	3524.50	1702379.27	14338771.41	39°29'7.7013"N	80°46'49.4057"W	16009.12	167.282	0.25	-0.20	0.15	
23284.00	89.540	160.950	6909.14	16012.11	-15705.07	3555.48	1702410.25	14338682.70	39°29'6.8235"N	80°46'49.0132"W	16102.50	167.244	0.49	0.23	0.43	
23379.00	89.350	160.450	6910.06	16107.10	-15794.73	3586.88	1702441.63	14338593.08	39°29'5.9366"N	80°46'48.6156"W	16196.88	167.205	0.56	-0.20	-0.53	
23473.00	89.380	160.930	6911.10	16201.10	-15883.43	3617.96	1702472.70	14338504.41	39°29'5.0592"N	80°46'48.2219"W	16290.27	167.168	0.51	0.03	0.51	
23568.00	89.630	161.600	6911.92	16296.09	-15973.39	3648.48	1702503.20	14338414.49	39°29'4.1693"N	80°46'47.8356"W	16384.77	167.134	0.75	0.26	0.71	
23662.00	89.450	161.620	6912.67	16390.08	-16062.59	3678.13	1702532.85	14338325.32	39°29'3.2870"N	80°46'47.4601"W	16478.33	167.102	0.19	-0.19	0.02	
23757.00	89.320	161.490	6913.69	16485.08	-16152.70	3708.19	1702562.89	14338235.25	39°29'2.3957"N	80°46'47.0796"W	16572.88	167.071	0.19	-0.14	-0.14	
23851.00	89.450	161.600	6914.70	16579.07	-16241.87	3737.94	1702592.63	14338146.12	39°29'1.5137"N	80°46'46.7029"W	16666.45	167.039	0.18	0.14	0.12	
23945.00	89.720	162.030	6915.38	16673.06	-16331.17	3767.28	1702621.96	14338056.85	39°29'0.6304"N	80°46'46.3316"W	16760.05	167.010	0.54	0.29	0.46	
24040.00	89.480	161.570	6916.05	16768.05	-16421.41	3796.95	1702651.62	14337966.64	39°28'59.7378"N	80°46'45.9560"W	16854.66	166.981	0.55	-0.25	-0.48	
24134.00	89.570	161.560	6916.83	16862.05	-16510.59	3826.67	1702681.33	14337877.51	39°28'58.8557"N	80°46'45.5796"W	16948.24	166.951	0.10	0.10	-0.01	
24229.00	89.600	161.420	6917.51	16957.04	-16600.67	3856.83	1702711.47	14337787.46	39°28'57.9647"N	80°46'45.1978"W	17042.81	166.921	0.15	0.03	-0.15	
24323.00	89.320	161.580	6918.40	17051.04	-16689.81	3886.66	1702741.29	14337698.36	39°28'57.0830"N	80°46'44.8202"W	17136.39	166.891	0.34	-0.30	0.17	
24418.00	89.510	161.580	6919.37	17146.03	-16779.94	3916.67	1702771.29	14337608.26	39°28'56.1915"N	80°46'44.4402"W	17230.98	166.862	0.20	0.20	0.00	
24512.00	89.510	161.560	6920.17	17240.02	-16869.11	3946.39	1702801.00	14337519.12	39°28'55.3094"N	80°46'44.0640"W	17324.57	166.833	0.02	0.00	-0.02	
24607.00	89.540	161.580	6920.96	17335.02	-16959.24	3976.42	1702831.02	14337429.04	39°28'54.4179"N	80°46'43.6838"W	17419.17	166.804	0.04	0.03	0.02	
24701.00	89.690	161.690	6921.59	17429.01	-17048.45	4006.04	1702860.62	14337339.86	39°28'53.5355"N	80°46'43.3089"W	17512.79	166.777	0.20	0.16	0.12	
24796.00	89.420	161.360	6922.33	17524.01	-17138.55	4036.14	1702890.71	14337249.80	39°28'52.6443"N	80°46'42.9278"W	17607.39	166.748	0.45	-0.28	-0.35	
24890.00	89.420	161.590	6923.28	17618.00	-17227.67	4066.00	1702920.57	14337160.71	39°28'51.7627"N	80°46'42.5498"W	17700.99	166.720	0.24	0.00	0.24	
24915.00	89.630	161.980	6923.49	17643.00	-17251.42	4073.82	1702928.38	14337136.97	39°28'51.5278"N	80°46'42.4509"W	17725.90	166.713	1.77	0.84	1.56	

RECEIVED  
 Office of Oil and Gas  
 OCT 18 2023  
 WV Department of  
 Environmental Protection



# Actual Wellpath Report

Gothic Unit 2H AWP Proj: 24940'

Page 11 of 13



## REFERENCE WELLPATH IDENTIFICATION

Operator	ANTERO RESOURCES CORPORATION	Well	Gothic Unit 2H
Field	Tyler	API	47-095-02825-0000
Facility	Thin Air Pad	Wellbore	Gothic Unit 2H AWB
Slot	Slot 2B		

## WELLPATH DATA (271 stations) † = interpolated, ‡ = extrapolated station

MD [ft]	Inclination [°]	Azimuth [°]	TVD [ft]	Vert Sect [ft]	North [ft]	East [ft]	Grid East [US ft]	Grid North [US ft]	Latitude	Longitude	Closure Dist [ft]	Closure Dir [°]	DLS [°/100ft]	Build Rate [°/100ft]	Turn Rate [°/100ft]	Comments
24940.00‡	89.630	161.980	6923.65	17668.00	-17275.19	4081.55	1702936.11	14337113.21	39°28'51.2927"N	80°46'42.3530"W	17750.81	166.707	0.00	0.00	0.00	Projected MD at TD: 24940'

## HOLE & CASING SECTIONS - Ref Wellbore: Gothic Unit 2H AWB Ref Wellpath: Gothic Unit 2H AWP Proj: 24940'

String/Diameter	Start MD [ft]	End MD [ft]	Interval [ft]	Start TVD [ft]	End TVD [ft]	Start N/S [ft]	Start E/W [ft]	End N/S [ft]	End E/W [ft]
20in Conductor	25.50	126.00	100.50	25.50	126.00	0.00	0.00	0.28	0.25
17.5in Open Hole	126.00	451.00	325.00	126.00	450.99	0.28	0.25	1.30	2.15
13.375in Casing Surface	25.50	431.00	405.50	25.50	430.99	0.00	0.00	1.28	1.96
12.25in Open Hole	451.00	3579.00	3128.00	450.99	3465.64	1.30	2.15	-48.53	-778.21
9.625in Casing Intermediate	25.50	3559.00	3533.50	25.50	3446.27	0.00	0.00	-47.91	-773.27
8.75in Open Hole	3579.00	6215.00	2636.00	3465.64	5982.50	-48.53	-778.21	-71.76	-1554.84
8.5in Open Hole	6215.00	24940.00	18725.00	5982.50	6923.65	-71.76	-1554.84	-17275.19	4081.55
5.5in Casing Production	25.50	24920.00	24894.50	25.50	6923.52	0.00	0.00	-17256.17	4075.37

RECEIVED  
 Office of Oil and Gas  
 OCT 18 2023  
 WV Department of  
 Environmental Protection



# Actual Wellpath Report

Gothic Unit 2H AWP Proj: 24940'

Page 12 of 13



## REFERENCE WELLPATH IDENTIFICATION

Operator	ANTERO RESOURCES CORPORATION	Well	Gothic Unit 2H
Field	Tyler	API	47-095-02825-0000
Facility	Thin Air Pad	Wellbore	Gothic Unit 2H AWB
Slot	Slot 2B		

## TARGETS

Name	TVD [ft]	North [ft]	East [ft]	Grid East [US ft]	Grid North [US ft]	Latitude	Longitude	Shape
Gothic Unit 2H POE Rev-3	6855.00	-638.19	-1598.59	1697258.23	14353743.58	39°31'35.8534"N	80°47'54.3182"W	point
Gothic Unit 2H BHL Rev-3	6884.00	-17146.32	4031.79	1702886.36	14337242.03	39°28'52.5676"N	80°46'42.9836"W	point
Gothic Unit 2H LP Rev-3	6884.00	-829.13	-1533.46	1697323.33	14353552.72	39°31'33.9649"N	80°47'53.4926"W	point
Gothic Unit 2H 50' L/R Hard Line	7000.00	-8892.26	1216.60	1700072.30	14345492.80	39°30'14.2122"N	80°47'18.6394"W	rectangle
2D Rectangle 17441.9 x 100.								

## WELLPATH COMPOSITION - Ref Wellbore: Gothic Unit 2H AWB Ref Wellpath: Gothic Unit 2H AWP Proj: 24940'

Start MD [ft]	End MD [ft]	Positional Uncertainty Model	Log Name/Comment	Wellbore	Survey Date
25.50	470.00	Gyrodata 2015 - GC+VMR+DPIPE	01 Gyrodata MS Gyro <17-1/2"> (100'-470')	Gothic Unit 2H AWB	1/20/2023
470.00	3497.00	BH NaviTrak (2019) (Axial Corr+HRGM)	02 APS EM <12-1/4"> (470')(505'-3497')	Gothic Unit 2H AWB	1/20/2023
3497.00	6136.00	BH NaviTrak (2019) (Axial Corr+HRGM)	03 APS EM <8-3/4"> (3497')(3590'-6136')	Gothic Unit 2H AWB	3/25/2023
6136.00	24940.00	BH AutoTrak Curve/eXpress (2019) (HRGM, Short spacing)	04 BH AT Curve <8-1/2"> (6136')(6266'-24915')	Gothic Unit 2H AWB	3/25/2023

RECEIVED  
 Office of Oil and Gas  
 OCT 18 2023  
 WV Department of  
 Environmental Protection



# Actual Wellpath Report

Gothic Unit 2H AWP Proj: 24940'

Page 13 of 13



## REFERENCE WELLPATH IDENTIFICATION

Operator	ANTERO RESOURCES CORPORATION	Well	Gothic Unit 2H
Field	Tyler	API	47-095-02825-0000
Facility	Thin Air Pad	Wellbore	Gothic Unit 2H AWB
Slot	Slot 2B		

## COMMENTS

### Wellpath general comments

API: 47-095-02825-0000

BH Job #: 111653761

Rig: H&P 317

Duration: 3/29/2023-4/4/2023

Gyrodata MS Gyro <17-1/2"> (100'-470')

APS EM <12-1/4"> (470')(505'-3497')

APS EM <8-3/4"> (3497')(3590'-6136')

BH AT Curve <8-1/2"> (6136')(6266'-24915')

Sycamore: 6827' MD

Middlesex: 6984' MD

Burkett: 7152' MD

Tully: 7209' MD

Marcellus POE: 7385' MD

Projected MD at TD: 24940'

RECEIVED  
Office of Oil and Gas  
OCT 18 2023  
WV Department of  
Environmental Protection