



ANTERO RESOURCES CORPORATION



Location: Tyler County, WV
Field: Tyler
Facility: Thin Air Pad

Slot: Slot 2F
Well: Embry Unit 1H
Wellbore: Embry Unit 1H PWB

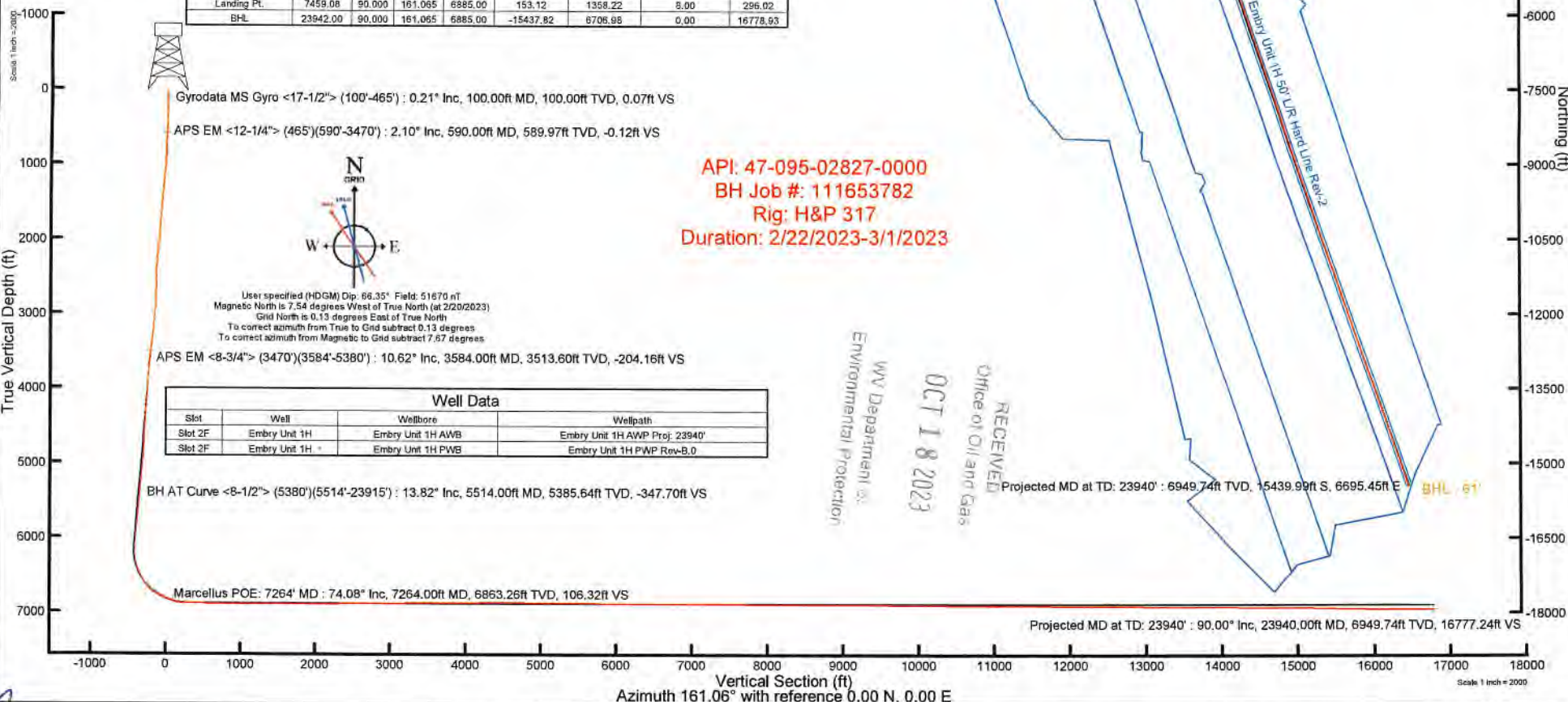
Easting (ft)

Scale 1 inch = 3000

Plot reference wellpath is Embry Unit 1H PWP Rev-B.0	Grid System: NAD27 / UTM Zone 17 North, US feet
True vertical depths are referenced to H&P 317 (RKB)	North Reference: Grid north
Reference wellpath measured depths are referenced to H&P 317 (RKB)	Scale: True distance
H&P 317 (RKB) to Mean Sea Level: 1225.5 feet	Coordinates are in feet referenced to Slot
Mean Sea Level to Ground level (At Slot Slot 2F): -1200 feet	Depths are in feet
Offset wellpath MDs are referenced to each path's default MD datum	Created by: edgarj on 2023-03-14; Database: WA_MPL_EASTERNUS_Disk

Location Information				
Facility Name	Grid East (US ft)	Grid North (US ft)	Latitude	Longitude
Thin Air Pad	1688787.140	14354225.910	39°31'40.588"N	80°47'34.785"W
Slot	Local N (ft)	Local E (ft)	Grid East (US ft)	Grid North (US ft)
Slot 2F	189.89	118.28	1698905.370	14354415.720
Comment	Embry Unit 1H			
H&P 317 (RKB) to Ground level (At Slot Slot 2F)	25.5ft			
Mean Sea Level to Ground level (At Slot Slot 2F)	-1200ft			
H&P 317 (RKB) to Mean Sea Level	1225.5ft			

Well Profile Data								
Design Comment	MD (ft)	Inc (")	Az (°)	TVD (ft)	Local N (ft)	Local E (ft)	DLS (°/100ft)	VS (ft)
Tie On	3470.00	11.710	36.860	3401.76	366.16	477.86	0.62	-191.20
Proj. to Bottom	3542.00	11.710	36.860	3472.26	377.85	486.73	0.00	-199.41
Drill Out	3622.00	11.710	36.860	3550.59	390.84	496.47	0.00	-208.53
End of 3D Arc	3826.61	14.053	52.034	3750.10	422.74	528.53	2.00	-228.31
Curve KOP	6272.00	14.053	52.034	6122.30	788.04	996.65	0.00	-421.88
POE	7261.80	74.217	161.065	6858.00	337.37	1295.01	8.00	101.22
Landing Pt.	7459.08	90.000	161.065	6885.00	153.12	1358.22	8.00	296.02
BHL	23942.00	90.000	161.065	6885.00	-15437.82	6706.88	0.00	16778.93





Actual Wellpath Report

Embry Unit 1H AWP Proj: 23940'

Page 1 of 13



REFERENCE WELLPATH IDENTIFICATION

Operator	ANTERO RESOURCES CORPORATION	Well	Embry Unit 1H
Field	Tyler	API	47-095-02827-0000
Facility	Thin Air Pad	Wellbore	Embry Unit 1H AWB
Slot	Slot 2F		

REPORT SETUP INFORMATION

Projection System	NAD27 / UTM Zone 17 North, US feet	Software System	WellArchitect® 6.0
North Reference	Grid	User	Edsaryar
Scale	0.999604	Report Generated	3/14/2023 at 1:55:46 AM
Convergence at slot	0.13° East	Database	WA_MPL_EASTERNUS_Defn

WELLPATH LOCATION

	Local coordinates		Grid coordinates		Geographic coordinates	
	North[ft]	East[ft]	Easting[US ft]	Northing[US ft]	Latitude	Longitude
Slot Location	189.89	118.28	1698905.37	14354415.72	39°31'42.4620"N	80°47'33.2700"W
Facility Reference Pt			1698787.14	14354225.91	39°31'40.5880"N	80°47'34.7850"W
Field Reference Pt			0.00	0.00	0°00'0.0000"	85°29'19.3013"W

WELLPATH DATUM

Calculation method	Minimum curvature	H&P 317 (RKB) to Facility Vertical Datum	1225.50ft
Horizontal Reference Pt	Slot	H&P 317 (RKB) to Mean Sea Level	1225.50ft
Vertical Reference Pt	H&P 317 (RKB)	H&P 317 (RKB) to Ground Level at Slot (Slot 2F)	25.50ft
MD Reference Pt	H&P 317 (RKB)	Section Origin	N 0.00, E 0.00 ft
Field Vertical Reference	Mean Sea Level	Section Azimuth	161.06°

RECEIVED
 Office of Oil and Gas
 OCT 18 2023
 WV Department of
 Environmental Protection



Actual Wellpath Report

Embry Unit 1H AWP Proj: 23940'

Page 2 of 13



REFERENCE WELLPATH IDENTIFICATION				
Operator	ANTERO RESOURCES CORPORATION		Well	Embry Unit 1H
Field	Tyler		API	47-095-02827-0000
Facility	Thin Air Pad		Wellbore	Embry Unit 1H AWB
Slot	Slot 2F			

WELLPATH DATA (260 stations) † = interpolated, ‡ = extrapolated station																
MD (ft)	Inclination (°)	Azimuth (°)	TVD (ft)	Vert Sect (ft)	North (ft)	East (ft)	Grid East [US ft]	Grid North [US ft]	Latitude	Longitude	Closure Dist (ft)	Closure Dir (°)	DLS (°/100ft)	Build Rate (°/100ft)	Turn Rate (°/100ft)	Comments
0.00	0.00	222.240	0.00	0.00	0.00	0.00	1698905.37	14354415.72	39°31'42.4620"N	80°47'33.2700"W	0.00	0.000	0.00	0.00	0.00	
25.50	0.000	222.240	25.50	0.00	0.00	0.00	1698905.37	14354415.72	39°31'42.4620"N	80°47'33.2700"W	0.00	0.000	0.00	0.00	0.00	
100.00	0.210	222.240	100.00	0.07	-0.10	-0.09	1698905.28	14354415.62	39°31'42.4610"N	80°47'33.2711"W	0.14	222.240	0.28	0.28	0.00	Gyrodota MS Gyro <17-1/2"> (100'-465')
200.00	0.210	232.310	200.00	0.21	-0.35	-0.36	1698905.01	14354415.37	39°31'42.4586"N	80°47'33.2746"W	0.50	225.905	0.04	0.00	10.07	
300.00	0.290	220.520	300.00	0.40	-0.65	-0.67	1698904.70	14354415.07	39°31'42.4556"N	80°47'33.2785"W	0.94	225.703	0.09	0.08	-11.79	
400.00	0.110	229.420	400.00	0.56	-0.91	-0.91	1698904.46	14354414.81	39°31'42.4531"N	80°47'33.2816"W	1.28	224.960	0.18	-0.18	8.90	
465.00	0.220	25.830	465.00	0.50	-0.84	-0.90	1698904.47	14354414.88	39°31'42.4538"N	80°47'33.2815"W	1.23	227.094	0.50	0.17	240.63	
590.00	2.100	59.810	589.97	-0.12	0.53	1.18	1698906.55	14354416.25	39°31'42.4672"N	80°47'33.2548"W	1.30	65.834	1.54	1.50	27.18	APS EM <12-1/4"> (465')(590'-3470')
680.00	5.020	56.230	679.78	-1.45	3.55	5.88	1698911.25	14354419.27	39°31'42.4970"N	80°47'33.1948"W	6.87	58.896	3.25	3.24	-3.98	
769.00	5.980	56.040	768.37	-3.65	8.30	12.97	1698918.33	14354424.02	39°31'42.5438"N	80°47'33.1042"W	15.40	57.362	1.08	1.08	-0.21	
859.00	6.060	55.600	857.88	-6.13	13.61	20.77	1698926.14	14354429.32	39°31'42.5960"N	80°47'33.0044"W	24.83	56.776	0.10	0.09	-0.49	
949.00	7.640	53.250	947.23	-9.22	19.87	29.49	1698934.85	14354435.58	39°31'42.6577"N	80°47'32.8930"W	35.56	56.026	1.78	1.76	-2.61	
1038.00	10.040	50.210	1035.17	-13.80	28.38	40.19	1698945.55	14354444.09	39°31'42.7416"N	80°47'32.7562"W	49.20	54.776	2.75	2.70	-3.42	
1132.00	12.010	47.140	1127.43	-20.68	40.27	53.66	1698959.01	14354455.98	39°31'42.8588"N	80°47'32.5840"W	67.09	53.109	2.19	2.10	-3.27	
1227.00	12.080	44.060	1220.34	-29.20	54.14	67.82	1698973.16	14354469.84	39°31'42.9956"N	80°47'32.4029"W	86.78	51.398	0.68	0.07	-3.24	
1322.00	13.630	48.380	1312.96	-38.03	68.72	83.10	1698988.44	14354484.41	39°31'43.1393"N	80°47'32.2074"W	107.83	50.410	1.92	1.63	4.55	
1416.00	13.750	47.610	1404.29	-46.74	83.61	99.63	1699004.96	14354499.30	39°31'43.2861"N	80°47'31.9960"W	130.06	49.997	0.23	0.13	-0.82	
1511.00	14.420	51.720	1496.43	-55.15	98.55	117.25	1699022.58	14354514.23	39°31'43.4333"N	80°47'31.7707"W	153.17	49.954	1.27	0.71	4.33	
1605.00	14.450	53.430	1587.47	-62.58	112.79	135.86	1699041.18	14354528.46	39°31'43.5736"N	80°47'31.5328"W	176.58	50.302	0.45	0.03	1.82	
1699.00	14.090	52.990	1678.56	-69.68	126.66	154.42	1699059.73	14354542.33	39°31'43.7103"N	80°47'31.2956"W	199.72	50.639	0.40	-0.38	-0.47	
1793.00	14.210	52.850	1769.71	-76.84	140.52	172.75	1699078.05	14354556.18	39°31'43.8468"N	80°47'31.0612"W	222.68	50.875	0.13	0.13	-0.15	
1888.00	14.380	51.540	1861.77	-84.42	154.90	191.28	1699096.57	14354570.55	39°31'43.9885"N	80°47'30.8243"W	246.13	51.000	0.38	0.18	-1.38	
1982.00	14.570	52.440	1952.79	-92.10	169.36	209.79	1699115.08	14354585.02	39°31'44.1311"N	80°47'30.5876"W	269.62	51.087	0.31	0.20	0.96	
2077.00	14.390	49.900	2044.77	-100.18	184.25	228.30	1699133.57	14354599.90	39°31'44.2778"N	80°47'30.3510"W	293.37	51.094	0.69	-0.19	-2.67	
2170.00	14.140	49.210	2134.90	-108.58	199.12	245.74	1699151.01	14354614.76	39°31'44.4243"N	80°47'30.1280"W	318.28	50.983	0.33	-0.27	-0.74	
2265.00	14.820	49.430	2226.89	-117.37	214.60	263.75	1699169.02	14354630.23	39°31'44.5769"N	80°47'29.8977"W	340.03	50.867	0.72	0.72	0.23	
2359.00	15.280	56.150	2317.67	-124.99	229.32	283.17	1699188.43	14354644.95	39°31'44.7220"N	80°47'29.6494"W	364.38	50.999	1.92	0.49	7.15	
2454.00	15.740	62.390	2409.21	-130.16	242.26	304.99	1699210.24	14354657.89	39°31'44.8494"N	80°47'29.3706"W	389.50	51.538	1.82	0.48	6.57	
2548.00	13.130	68.720	2500.24	-132.51	252.05	326.24	1699231.48	14354667.67	39°31'44.9456"N	80°47'29.0991"W	412.26	52.311	3.24	-2.78	6.73	
2643.00	11.960	68.920	2592.98	-133.32	259.51	345.48	1699250.71	14354675.12	39°31'45.0189"N	80°47'28.8533"W	432.09	53.088	1.23	-1.23	0.21	

RECEIVED
 Office of Oil and Gas
 OCT 18 2023
 WV Department of
 Environmental Protection



Actual Wellpath Report

Embry Unit 1H AWP Proj: 23940'
Page 3 of 13



REFERENCE WELLPATH IDENTIFICATION				
Operator	ANTERO RESOURCES CORPORATION		Well	Embry Unit 1H
Field	Tyler		API	47-095-02827-0000
Facility	Thin Air Pad		Wellbore	Embry Unit 1H AWB
Slot	Slot 2F			

WELLPATH DATA (260 stations)																
MD [ft]	Inclination [°]	Azimuth [°]	TVD [ft]	Vert Sect [ft]	North [ft]	East [ft]	Grid East [US ft]	Grid North [US ft]	Latitude	Longitude	Closure Dist [ft]	Closure Dir [°]	DLS [°/100ft]	Build Rate [°/100ft]	Turn Rate [°/100ft]	Comments
2737.00	12.200	66.900	2684.89	-134.41	266.91	363.70	1699268.93	14354682.52	39°31'45.0916"N	80°47'28.6205"W	451.13	53.727	0.52	0.26	-2.15	
2831.00	12.050	59.020	2776.80	-137.17	275.85	381.25	1699286.47	14354691.46	39°31'45.1797"N	80°47'28.3963"W	470.58	54.112	1.77	-0.16	-8.38	
2926.00	12.020	54.930	2869.72	-141.99	286.64	397.85	1699303.06	14354702.25	39°31'45.2859"N	80°47'28.1841"W	490.36	54.228	0.90	-0.03	-4.31	
3020.00	11.650	52.830	2961.72	-147.68	298.00	413.42	1699318.63	14354713.60	39°31'45.3978"N	80°47'27.9851"W	509.63	54.215	0.60	-0.39	-2.23	
3115.00	12.530	47.100	3054.61	-154.86	310.81	428.62	1699333.82	14354726.41	39°31'45.5241"N	80°47'27.7908"W	529.45	54.052	1.57	0.93	-6.03	
3209.00	12.330	44.930	3146.41	-163.43	324.86	443.17	1699348.37	14354740.45	39°31'45.6626"N	80°47'27.6046"W	549.49	53.758	0.54	-0.21	-2.31	
3303.00	11.990	39.770	3238.31	-172.92	339.47	456.51	1699361.70	14354755.05	39°31'45.8066"N	80°47'27.4340"W	568.89	53.365	1.21	-0.36	-5.49	
3398.00	11.800	39.030	3331.27	-183.19	354.60	468.94	1699374.12	14354770.18	39°31'45.9559"N	80°47'27.2749"W	587.91	52.904	0.26	-0.20	-0.78	
3470.00	11.710	36.880	3401.76	-191.20	366.16	477.96	1699383.14	14354781.74	39°31'46.0700"N	80°47'27.1594"W	602.10	52.544	0.62	-0.13	-2.99	
3584.00	10.620	33.160	3513.60	-204.18	384.21	490.65	1699395.82	14354799.78	39°31'46.2481"N	80°47'26.9969"W	623.18	51.937	1.15	-0.96	-3.26	APS EM <8-3/4"> (3470')(3584'-5380')
3678.00	11.300	39.720	3605.89	-214.27	398.55	501.27	1699406.44	14354814.11	39°31'46.3895"N	80°47'26.8609"W	640.40	51.513	1.51	0.72	6.98	
3773.00	13.480	47.380	3698.67	-223.56	413.21	515.37	1699420.53	14354828.76	39°31'46.5341"N	80°47'26.6806"W	660.56	51.279	2.87	2.29	8.06	
3867.00	16.190	56.470	3789.54	-231.26	427.87	534.36	1699439.52	14354843.42	39°31'46.6785"N	80°47'26.4378"W	684.55	51.315	3.79	2.88	9.67	
3962.00	16.160	57.170	3880.78	-237.77	442.35	556.51	1699461.66	14354857.90	39°31'46.8212"N	80°47'26.1547"W	710.90	51.520	0.21	-0.03	0.74	
4056.00	14.730	53.960	3971.39	-244.43	456.48	577.17	1699482.31	14354872.01	39°31'46.9603"N	80°47'25.8908"W	735.86	51.660	1.77	-1.52	-3.41	
4151.00	15.420	54.920	4063.12	-251.49	470.84	597.27	1699502.40	14354886.37	39°31'47.1018"N	80°47'25.6337"W	760.54	51.751	0.77	0.73	1.01	
4245.00	15.990	55.340	4153.61	-258.47	485.39	618.15	1699523.27	14354900.91	39°31'47.2451"N	80°47'25.3668"W	785.94	51.860	0.62	0.61	0.45	
4339.00	14.470	51.960	4244.31	-265.82	499.99	638.05	1699543.16	14354915.51	39°31'47.3889"N	80°47'25.1124"W	810.61	51.917	1.87	-1.62	-3.60	
4434.00	14.310	55.040	4336.33	-272.94	514.03	657.02	1699562.13	14354929.54	39°31'47.5272"N	80°47'24.8699"W	834.20	51.962	0.82	-0.17	3.24	
4528.00	12.470	54.430	4427.77	-279.06	526.59	674.79	1699579.90	14354942.10	39°31'47.6510"N	80°47'24.6426"W	855.95	52.033	1.96	-1.96	-0.65	
4623.00	12.150	55.600	4520.59	-284.66	538.20	691.39	1699596.48	14354953.71	39°31'47.7654"N	80°47'24.4305"W	876.17	52.101	0.43	-0.34	1.23	
4717.00	11.740	58.850	4612.55	-289.32	548.74	707.73	1699612.82	14354964.24	39°31'47.8691"N	80°47'24.2216"W	895.54	52.212	0.84	-0.44	3.46	
4812.00	13.240	63.890	4705.30	-292.72	558.53	725.77	1699630.86	14354974.02	39°31'47.9655"N	80°47'23.9911"W	915.81	52.420	1.95	1.58	5.31	
4906.00	14.810	60.850	4796.50	-296.19	569.12	745.93	1699651.01	14354984.61	39°31'48.0697"N	80°47'23.7335"W	938.25	52.658	1.84	1.67	-3.23	
5001.00	15.080	54.450	4888.29	-301.88	582.22	766.59	1699671.66	14354997.71	39°31'48.1987"N	80°47'23.4694"W	962.62	52.784	1.76	0.28	-6.74	
5095.00	15.680	51.630	4978.93	-309.60	597.21	786.50	1699691.56	14355012.69	39°31'48.3464"N	80°47'23.2149"W	987.55	52.790	1.02	0.64	-3.00	
5190.00	13.650	46.140	5070.83	-318.59	612.95	804.65	1699709.70	14355028.43	39°31'48.5015"N	80°47'22.9828"W	1011.52	52.701	2.59	-2.14	-5.78	
5284.00	13.050	48.580	5162.29	-327.32	627.68	820.61	1699725.65	14355043.13	39°31'48.6465"N	80°47'22.7787"W	1033.13	52.589	0.88	-0.64	2.60	
5380.00	14.130	48.330	5255.60	-336.00	642.62	837.49	1699742.53	14355058.08	39°31'48.7940"N	80°47'22.5628"W	1055.63	52.500	1.13	1.13	-0.26	
5514.00	13.820	51.400	5385.64	-347.70	663.48	862.22	1699767.24	14355078.93	39°31'48.9996"N	80°47'22.2466"W	1087.94	52.422	0.60	-0.23	2.29	BH AT Curve <8-1/2"> (5380')(5514'-23915')

RECEIVED
 Office of Oil and Gas
 OCT 18 2023
 WV Department of Environmental Protection



Actual Wellpath Report

Embry Unit 1H AWP Proj: 23940'

Page 4 of 13



REFERENCE WELLPATH IDENTIFICATION				
Operator	ANTERO RESOURCES CORPORATION		Well	Embry Unit 1H
Field	Tyler		API	47-095-02827-0000
Facility	Thin Air Pad		Wellbore	Embry Unit 1H AWB
Slot	Slot 2F			

WELLPATH DATA (260 stations) † = interpolated, ‡ = extrapolated station																
MD [ft]	Inclination [°]	Azimuth [°]	TVD [ft]	Vert Sect [ft]	North [ft]	East [ft]	Grid East [US ft]	Grid North [US ft]	Latitude	Longitude	Closure Dist [ft]	Closure Dir [°]	DLS [°/100ft]	Build Rate [°/100ft]	Turn Rate [°/100ft]	Comments
5608.00	14.110	50.640	5476.86	-355.48	677.75	879.85	1699784.87	14355093.20	39°31'49.1402"N	80°47'22.0212"W	1110.62	52.393	0.37	0.31	-0.81	
5702.00	13.990	51.090	5568.05	-363.35	692.15	897.55	1699802.56	14355107.60	39°31'49.2821"N	80°47'21.7948"W	1133.43	52.362	0.17	-0.13	0.48	
5797.00	14.010	50.950	5660.23	-371.23	706.61	915.41	1699820.42	14355122.05	39°31'49.4246"N	80°47'21.5664"W	1156.41	52.335	0.04	0.02	-0.15	
5891.00	14.070	50.420	5751.42	-379.17	721.06	933.06	1699838.06	14355136.49	39°31'49.5670"N	80°47'21.3408"W	1179.20	52.304	0.15	0.06	-0.56	
5985.00	13.960	50.720	5842.62	-387.14	735.52	950.64	1699855.63	14355150.94	39°31'49.7095"N	80°47'21.1160"W	1201.96	52.271	0.14	-0.12	0.32	
6080.00	14.010	50.300	5934.80	-395.20	750.12	968.36	1699873.34	14355165.54	39°31'49.8534"N	80°47'20.8894"W	1224.90	52.238	0.12	0.05	-0.44	
6174.00	13.820	50.440	6026.04	-403.18	764.53	985.77	1699890.75	14355179.95	39°31'49.9955"N	80°47'20.6668"W	1247.50	52.204	0.21	-0.20	0.15	
6269.00	13.740	51.780	6118.31	-410.90	778.74	1003.38	1699908.35	14355194.15	39°31'50.1355"N	80°47'20.4416"W	1270.12	52.184	0.35	-0.08	1.41	
6363.00	12.460	83.720	6209.98	-412.37	786.77	1022.25	1699927.22	14355202.17	39°31'50.2144"N	80°47'20.2005"W	1289.96	52.417	7.72	-1.36	33.98	
6458.00	14.940	108.840	6302.35	-402.61	783.93	1044.05	1699949.01	14355199.34	39°31'50.1858"N	80°47'19.9224"W	1305.60	53.099	6.72	2.61	26.44	
6552.00	18.730	132.200	6392.41	-381.94	769.86	1066.74	1699971.68	14355185.27	39°31'50.0462"N	80°47'19.6333"W	1315.53	54.182	8.17	4.03	24.85	
6647.00	24.920	152.380	6480.68	-348.72	741.81	1087.36	1699992.30	14355157.24	39°31'49.7686"N	80°47'19.3709"W	1316.30	55.698	10.15	6.52	21.24	
6732.00†	31.501	154.687	6555.54	-308.90	705.83	1105.18	1700010.11	14355121.27	39°31'49.4125"N	80°47'19.1446"W	1311.34	57.435	7.85	7.74	2.71	Sycamore: 6732' MD
6741.00	32.200	154.880	6563.19	-304.18	701.54	1107.20	1700012.13	14355116.98	39°31'49.3700"N	80°47'19.1189"W	1310.74	57.641	7.85	7.76	2.15	
6836.00	38.990	156.190	6640.39	-249.17	651.22	1130.04	1700034.96	14355066.68	39°31'48.8722"N	80°47'18.8289"W	1304.25	60.046	7.19	7.15	1.38	
6875.00†	42.558	156.135	6669.92	-223.80	627.92	1140.33	1700045.25	14355043.39	39°31'48.6417"N	80°47'18.6983"W	1301.79	61.161	9.15	9.15	-0.14	Middlesex: 6875' MD
6930.00	47.590	156.070	6708.75	-185.02	592.33	1156.10	1700061.01	14355007.82	39°31'48.2896"N	80°47'18.4981"W	1299.01	62.872	9.15	9.15	-0.12	
7024.00	57.890	153.320	6765.59	-110.79	524.85	1188.14	1700093.04	14354940.36	39°31'47.6219"N	80°47'18.0912"W	1298.91	66.167	11.20	10.96	-2.93	
7033.00†	58.471	153.431	6770.34	-103.21	518.01	1191.57	1700096.47	14354933.53	39°31'47.5543"N	80°47'18.0477"W	1299.30	66.504	6.54	6.46	1.23	Burkett: 7033' MD
7096.00†	62.543	154.173	6801.35	-48.82	468.82	1215.77	1700120.66	14354884.35	39°31'47.0675"N	80°47'17.7403"W	1303.03	68.913	6.54	6.46	1.18	Tully: 7096' MD
7119.00	64.030	154.430	6811.69	-28.42	450.31	1224.68	1700129.56	14354865.85	39°31'46.8843"N	80°47'17.6272"W	1304.84	69.812	6.54	6.47	1.12	
7213.00	70.710	155.930	6847.84	57.83	371.59	1261.05	1700165.92	14354787.17	39°31'46.1055"N	80°47'17.1654"W	1314.66	73.581	7.26	7.11	1.60	
7264.00†	74.076	158.234	6863.26	106.32	326.83	1279.97	1700184.83	14354742.42	39°31'45.6627"N	80°47'16.9253"W	1321.03	75.676	7.88	6.60	4.52	Marcellus POE: 7264' MD
7308.00	77.000	160.160	6874.25	148.89	287.00	1295.09	1700199.95	14354702.61	39°31'45.2687"N	80°47'16.7335"W	1326.51	77.505	7.88	6.64	4.38	
7402.00	86.270	162.090	6887.91	241.79	199.10	1325.13	1700229.97	14354614.74	39°31'44.3992"N	80°47'16.3528"W	1340.00	81.455	10.07	9.86	2.05	
7496.00	91.480	158.660	6889.76	335.72	110.62	1356.68	1700261.51	14354526.30	39°31'43.5240"N	80°47'15.9528"W	1361.18	85.339	6.63	5.54	-3.65	
7591.00	89.480	158.440	6888.96	430.62	22.21	1391.42	1700296.23	14354437.92	39°31'42.6494"N	80°47'15.5122"W	1391.59	89.086	2.12	-2.11	-0.23	
7689.00	88.950	160.350	6890.31	528.56	-69.51	1425.90	1700330.70	14354346.24	39°31'41.7422"N	80°47'15.0748"W	1427.59	92.791	2.02	-0.54	1.95	
7784.00	90.060	160.170	6891.13	623.55	-158.92	1457.98	1700362.77	14354256.86	39°31'40.8577"N	80°47'14.6681"W	1466.62	96.221	1.18	1.17	-0.19	
7878.00	89.850	160.170	6891.20	717.54	-247.35	1489.87	1700394.65	14354168.47	39°31'39.9830"N	80°47'14.2638"W	1510.26	99.426	0.22	-0.22	0.00	

RECEIVED
 Office of Oil and Gas
 OCT 18 2023
 WV Department of Environmental Protection



Actual Wellpath Report

Embry Unit 1H AWP Proj: 23940'

Page 5 of 13



REFERENCE WELLPATH IDENTIFICATION				
Operator	ANTERO RESOURCES CORPORATION		Well	Embry Unit 1H
Field	Tyler		API	47-095-02827-0000
Facility	Thin Air Pad		Wellbore	Embry Unit 1H AWB
Slot	Slot 2F			

WELLPATH DATA (260 stations)																
MD [ft]	Inclination [°]	Azimuth [°]	TVD [ft]	Vert Sect [ft]	North [ft]	East [ft]	Grid East [US ft]	Grid North [US ft]	Latitude	Longitude	Closure Dist [ft]	Closure Dir [°]	DLS [°/100ft]	Build Rate [°/100ft]	Turn Rate [°/100ft]	Comments
7972.00	90.150	160.010	6891.20	811.52	-335.73	1521.88	1700426.65	14354080.12	39°31'39.1088"N	80°47'13.8579"W	1558.47	102.440	0.36	0.32	-0.17	
8067.00	90.030	159.590	6891.05	906.50	-424.89	1554.69	1700459.44	14353991.00	39°31'38.2269"N	80°47'13.4420"W	1611.70	105.285	0.46	-0.13	-0.44	
8161.00	90.030	160.030	6891.00	1000.48	-513.11	1587.13	1700491.87	14353902.81	39°31'37.3542"N	80°47'13.0306"W	1668.01	107.916	0.47	0.00	0.47	
8256.00	89.940	160.140	6891.03	1095.46	-602.43	1619.49	1700524.21	14353813.53	39°31'36.4706"N	80°47'12.6204"W	1727.91	110.405	0.15	-0.09	0.12	
8350.00	90.000	159.760	6891.08	1189.45	-690.73	1651.72	1700556.43	14353725.26	39°31'35.5972"N	80°47'12.2118"W	1790.33	112.694	0.41	0.06	-0.40	
8445.00	89.690	158.980	6891.33	1284.40	-779.64	1685.19	1700589.89	14353636.39	39°31'34.7177"N	80°47'11.7873"W	1856.80	114.827	0.88	-0.33	-0.82	
8540.00	89.910	159.580	6891.66	1379.36	-868.49	1718.80	1700623.48	14353547.57	39°31'33.8387"N	80°47'11.3611"W	1925.76	116.807	0.67	0.23	0.63	
8634.00	90.400	158.810	6891.41	1473.30	-956.36	1752.18	1700656.86	14353459.74	39°31'32.9695"N	80°47'10.9377"W	1996.19	118.626	0.97	0.52	-0.82	
8729.00	90.280	159.940	6890.85	1568.26	-1045.27	1785.65	1700690.31	14353370.87	39°31'32.0900"N	80°47'10.5134"W	2069.09	120.344	1.20	-0.13	1.19	
8823.00	89.600	159.290	6890.94	1662.23	-1133.38	1818.39	1700723.04	14353282.79	39°31'31.2184"N	80°47'10.0982"W	2142.68	121.935	1.00	-0.72	-0.69	
8918.00	90.370	160.510	6890.97	1757.21	-1222.59	1851.04	1700755.67	14353193.61	39°31'30.3359"N	80°47'9.6843"W	2218.35	123.444	1.52	0.81	1.28	
9013.00	89.820	160.550	6890.81	1852.20	-1312.16	1882.70	1700787.32	14353104.08	39°31'29.4500"N	80°47'9.2829"W	2294.85	124.875	0.58	-0.58	0.04	
9107.00	90.000	159.490	6890.96	1946.19	-1400.50	1914.82	1700819.43	14353015.78	39°31'28.5761"N	80°47'8.8757"W	2372.33	126.182	1.14	0.19	-1.13	
9202.00	89.940	159.770	6891.01	2041.16	-1489.56	1947.89	1700852.48	14352926.75	39°31'27.6952"N	80°47'8.4564"W	2452.15	127.405	0.30	-0.06	0.29	
9296.00	89.970	159.880	6891.08	2135.13	-1577.79	1980.31	1700884.89	14352838.55	39°31'26.8224"N	80°47'8.0454"W	2532.00	128.546	0.12	0.03	0.12	
9391.00	90.150	161.970	6890.98	2230.13	-1667.57	2011.35	1700915.92	14352748.81	39°31'25.9343"N	80°47'7.6520"W	2612.72	129.661	2.21	0.19	2.20	
9580.00	90.370	162.190	6890.13	2419.10	-1847.40	2069.50	1700974.05	14352569.05	39°31'24.1557"N	80°47'6.9154"W	2774.12	131.755	0.16	0.12	0.12	
9675.00	90.280	162.100	6889.59	2514.08	-1937.82	2098.63	1701003.17	14352478.67	39°31'23.2613"N	80°47'6.5464"W	2856.47	132.719	0.13	-0.09	-0.09	
9769.00	90.370	161.300	6889.05	2608.07	-2027.07	2128.15	1701032.67	14352389.46	39°31'22.3786"N	80°47'6.1725"W	2939.05	133.607	0.86	0.10	-0.85	
9863.00	91.320	162.450	6887.67	2702.05	-2116.39	2157.38	1701061.90	14352300.17	39°31'21.4951"N	80°47'5.8021"W	3022.15	134.450	1.59	1.01	1.22	
9958.00	89.480	160.870	6887.00	2797.03	-2206.56	2187.27	1701091.77	14352210.04	39°31'20.6032"N	80°47'5.4235"W	3106.94	135.251	2.55	-1.94	-1.66	
10053.00	91.630	162.510	6886.08	2892.01	-2296.73	2217.11	1701121.60	14352119.90	39°31'19.7113"N	80°47'5.0454"W	3192.27	136.011	2.85	2.26	1.73	
10147.00	90.150	161.810	6884.62	2985.98	-2386.20	2245.91	1701150.38	14352030.47	39°31'18.8264"N	80°47'4.6807"W	3276.90	136.735	1.74	-1.57	-0.74	
10241.00	90.150	161.620	6884.38	3079.98	-2475.45	2275.40	1701179.86	14351941.25	39°31'17.9436"N	80°47'4.3071"W	3362.34	137.411	0.20	0.00	-0.20	
10336.00	90.180	161.450	6884.10	3174.97	-2565.56	2305.49	1701209.94	14351851.18	39°31'17.0523"N	80°47'3.9259"W	3449.26	138.056	0.18	0.03	-0.18	
10430.00	90.890	162.170	6883.23	3268.96	-2654.86	2334.83	1701239.27	14351761.92	39°31'16.1690"N	80°47'3.5542"W	3535.49	138.670	1.08	0.76	0.77	
10525.00	90.120	159.870	6882.39	3363.95	-2744.69	2365.73	1701270.15	14351672.13	39°31'15.2805"N	80°47'3.1627"W	3623.53	139.241	2.55	-0.81	-2.42	
10619.00	89.940	157.400	6882.34	3457.86	-2832.22	2399.97	1701304.38	14351584.63	39°31'14.4146"N	80°47'2.7285"W	3712.32	139.723	2.63	-0.19	-2.63	
10714.00	90.060	158.970	6882.34	3552.73	-2920.41	2435.27	1701339.67	14351496.47	39°31'13.5421"N	80°47'2.2807"W	3802.55	140.176	1.66	0.13	1.65	
10808.00	90.280	161.910	6882.06	3646.72	-3008.98	2466.74	1701371.12	14351407.94	39°31'12.6661"N	80°47'1.8819"W	3890.85	140.655	3.14	0.23	3.13	

RECEIVED
Office of Oil and Gas
OCT 18 2023
WV Department of Environmental Protection



Actual Wellpath Report

Embry Unit 1H AWP Proj: 23940'

Page 6 of 13



REFERENCE WELLPATH IDENTIFICATION				
Operator	ANTERO RESOURCES CORPORATION		Well	Embry Unit 1H
Field	Tyler		API	47-095-02827-0000
Facility	Thin Air Pad		Wellbore	Embry Unit 1H AWB
Slot	Slot 2F			

WELLPATH DATA (260 stations)																
MD [ft]	Inclination [°]	Azimuth [°]	TVD [ft]	Vert Sect [ft]	North [ft]	East [ft]	Grid East [US ft]	Grid North [US ft]	Latitude	Longitude	Closure Dist [ft]	Closure Dir [°]	DLS [°/100ft]	Build Rate [°/100ft]	Turn Rate [°/100ft]	Comments
10902.00	89.850	161.410	6881.95	3740.71	-3098.20	2496.31	1701400.69	14351318.75	39°31'11.7835"N	80°47'1.5072"W	3978.75	141.141	0.70	-0.46	-0.53	
10997.00	90.060	160.600	6882.03	3835.71	-3188.03	2527.23	1701431.60	14351228.96	39°31'10.8950"N	80°47'1.1154"W	4068.22	141.595	0.88	0.22	-0.85	
11091.00	90.770	161.610	6881.35	3929.71	-3276.96	2557.67	1701462.03	14351140.06	39°31'10.0154"N	80°47'0.7297"W	4156.94	142.028	1.31	0.76	1.07	
11185.00	90.280	160.740	6880.49	4023.70	-3365.93	2588.00	1701492.34	14351051.13	39°31'9.1354"N	80°47'0.3454"W	4245.85	142.444	1.06	-0.52	-0.93	
11279.00	91.420	161.320	6879.09	4117.69	-3454.81	2618.56	1701522.88	14350962.29	39°31'8.2562"N	80°46'59.9583"W	4335.04	142.840	1.36	1.21	0.62	
11373.00	91.200	159.070	6876.94	4211.65	-3543.22	2650.40	1701554.71	14350873.91	39°31'7.3816"N	80°46'59.5547"W	4424.82	143.203	2.40	-0.23	-2.39	
11468.00	90.340	160.100	6875.67	4306.60	-3632.24	2683.53	1701587.83	14350784.92	39°31'6.5010"N	80°46'59.1347"W	4516.03	143.543	1.41	-0.91	1.08	
11562.00	90.920	161.400	6874.63	4400.60	-3720.98	2714.52	1701618.81	14350696.22	39°31'5.6232"N	80°46'58.7420"W	4605.90	143.889	1.51	0.62	1.38	
11657.00	90.680	160.230	6873.31	4495.58	-3810.69	2745.73	1701650.01	14350606.54	39°31'4.7358"N	80°46'58.3464"W	4696.85	144.226	1.26	-0.25	-1.23	
11752.00	88.900	159.080	6873.74	4590.55	-3899.76	2778.76	1701683.02	14350517.51	39°31'3.8548"N	80°46'57.9278"W	4788.49	144.528	2.32	-1.98	-1.21	
11846.00	89.050	161.780	6875.50	4684.52	-3988.31	2810.24	1701714.49	14350429.00	39°31'2.9789"N	80°46'57.5288"W	4878.94	144.831	2.88	0.27	2.87	
11941.00	89.050	161.370	6877.08	4779.50	-4078.42	2840.26	1701744.50	14350338.92	39°31'2.0875"N	80°46'57.1485"W	4969.97	145.146	0.43	0.00	-0.43	
12036.00	89.050	159.740	6878.65	4874.48	-4167.99	2871.88	1701776.11	14350249.39	39°31'1.2015"N	80°46'56.7478"W	5061.60	145.432	1.72	0.00	-1.72	
12130.00	89.350	157.570	6879.96	4968.38	-4255.53	2906.09	1701810.30	14350161.88	39°31'0.3356"N	80°46'56.3140"W	5153.14	145.671	2.33	0.32	-2.31	
12225.00	89.080	157.940	6881.27	5063.22	-4343.45	2942.05	1701846.25	14350074.00	39°30'59.4658"N	80°46'55.8579"W	5246.07	145.888	0.48	-0.28	0.39	
12320.00	89.260	160.580	6882.64	5158.15	-4432.28	2975.68	1701879.87	14349985.21	39°30'58.5871"N	80°46'55.4314"W	5338.52	146.124	2.79	0.19	2.78	
12414.00	90.120	162.630	6883.15	5252.14	-4521.47	3005.35	1701909.52	14349896.05	39°30'57.7049"N	80°46'55.0557"W	5429.16	146.389	2.36	0.91	2.18	
12509.00	89.510	162.410	6883.46	5347.11	-4612.08	3033.88	1701938.04	14349805.48	39°30'56.8086"N	80°46'54.6944"W	5520.48	146.663	0.68	-0.64	-0.23	
12604.00	90.710	160.960	6883.28	5442.10	-4702.26	3063.73	1701967.88	14349715.33	39°30'55.9166"N	80°46'54.3163"W	5612.28	146.914	1.98	1.26	-1.53	
12699.00	90.090	161.580	6882.61	5537.09	-4792.23	3094.24	1701998.37	14349625.40	39°30'55.0267"N	80°46'53.9299"W	5704.36	147.151	0.92	-0.65	0.65	
12793.00	89.260	160.510	6883.15	5631.09	-4881.13	3124.77	1702028.89	14349536.54	39°30'54.1474"N	80°46'53.5431"W	5795.65	147.374	1.44	-0.88	-1.14	
12888.00	90.060	162.420	6883.71	5726.08	-4971.19	3154.97	1702059.08	14349446.51	39°30'53.2565"N	80°46'53.1606"W	5887.83	147.599	2.18	0.84	2.01	
12982.00	88.980	162.020	6884.50	5820.06	-5060.70	3183.67	1702087.77	14349357.04	39°30'52.3712"N	80°46'52.7971"W	5978.83	147.826	1.23	-1.15	-0.43	
13077.00	88.890	161.300	6886.26	5915.03	-5150.86	3213.55	1702117.65	14349266.91	39°30'51.4794"N	80°46'52.4186"W	6071.10	148.040	0.76	-0.09	-0.76	
13172.00	90.680	163.550	6886.62	6010.00	-5241.41	3242.24	1702146.32	14349176.39	39°30'50.5837"N	80°46'52.0554"W	6163.16	148.260	3.03	1.88	2.37	
13266.00	89.820	161.950	6886.21	6103.95	-5331.18	3270.11	1702174.18	14349086.66	39°30'49.6959"N	80°46'51.7026"W	6254.21	148.475	1.93	-0.91	-1.70	
13361.00	89.750	162.260	6886.57	6198.93	-5421.58	3299.30	1702203.36	14348996.29	39°30'48.8017"N	80°46'51.3329"W	6346.57	148.677	0.33	-0.07	0.33	
13456.00	89.880	161.950	6886.87	6293.92	-5511.99	3328.49	1702232.54	14348905.93	39°30'47.9075"N	80°46'50.9633"W	6439.01	148.874	0.35	0.14	-0.33	
13550.00	89.880	162.320	6887.07	6387.90	-5601.45	3357.33	1702261.36	14348816.50	39°30'47.0226"N	80°46'50.5981"W	6530.54	149.063	0.39	0.00	0.39	
13645.00	89.720	161.550	6887.40	6482.89	-5691.77	3386.79	1702290.81	14348726.22	39°30'46.1292"N	80°46'50.2251"W	6623.18	149.246	0.83	-0.17	-0.81	

RECEIVED
Office of Oil and Gas
OCT 18 2023
WV Department of Environmental Protection



Actual Wellpath Report

Embry Unit 1H AWP Proj: 23940'
Page 7 of 13



REFERENCE WELLPATH IDENTIFICATION				
Operator	ANTERO RESOURCES CORPORATION		Well	Embry Unit 1H
Field	Tyler		API	47-095-02827-0000
Facility	Thin Air Pad		Wellbore	Embry Unit 1H AWB
Slot	Slot 2F			

WELLPATH DATA (260 stations)																
MD [ft]	Inclination [°]	Azimuth [°]	TVD [ft]	Vert Sect [ft]	North [ft]	East [ft]	Grid East [US ft]	Grid North [US ft]	Latitude	Longitude	Closure Dist [ft]	Closure Dir [°]	DLS [°/100ft]	Build Rate [°/100ft]	Turn Rate [°/100ft]	Comments
13740.00	89.480	159.740	6888.06	6577.88	-5781.39	3418.27	1702322.28	14348636.63	39°30'45.2427"N	80°46'49.8262"W	6716.33	149.406	1.92	-0.25	-1.91	
13834.00	89.820	159.970	6888.64	6671.86	-5869.64	3450.64	1702354.64	14348548.41	39°30'44.3697"N	80°46'49.4159"W	6808.79	149.550	0.44	0.36	0.24	
13927.00	89.660	160.200	6889.06	6764.84	-5957.08	3482.32	1702386.30	14348461.01	39°30'43.5048"N	80°46'49.0144"W	6900.24	149.691	0.30	-0.17	0.25	
14022.00	89.750	160.430	6889.55	6859.83	-6046.53	3514.32	1702418.29	14348371.60	39°30'42.6200"N	80°46'48.6089"W	6993.64	149.834	0.26	0.09	0.24	
14117.00	90.490	161.530	6889.35	6954.83	-6136.34	3545.28	1702449.24	14348281.82	39°30'41.7316"N	80°46'48.2167"W	7086.87	149.983	1.40	0.78	1.16	
14211.00	89.750	161.430	6889.15	7048.83	-6225.47	3575.14	1702479.08	14348192.73	39°30'40.8500"N	80°46'47.8385"W	7179.00	150.132	0.79	-0.79	-0.11	
14306.00	90.340	161.640	6889.08	7143.82	-6315.58	3605.23	1702509.16	14348102.66	39°30'39.9587"N	80°46'47.4574"W	7272.15	150.280	0.66	0.62	0.22	
14401.00	89.750	161.380	6889.00	7238.82	-6405.67	3635.35	1702539.28	14348012.60	39°30'39.0675"N	80°46'47.0759"W	7365.35	150.424	0.68	-0.62	-0.27	
14496.00	89.910	161.700	6889.29	7333.82	-6495.78	3665.44	1702569.35	14347922.52	39°30'38.1762"N	80°46'46.6949"W	7458.59	150.565	0.38	0.17	0.34	
14590.00	89.780	161.830	6889.54	7427.81	-6585.06	3694.85	1702598.75	14347833.28	39°30'37.2931"N	80°46'46.3224"W	7550.83	150.703	0.20	-0.14	0.14	
14684.00	89.630	161.670	6890.02	7521.80	-6674.33	3724.29	1702628.17	14347744.04	39°30'36.4101"N	80°46'45.9496"W	7643.10	150.838	0.23	-0.16	-0.17	
14779.00	90.150	161.120	6890.21	7616.80	-6764.37	3754.60	1702658.47	14347654.04	39°30'35.5195"N	80°46'45.5657"W	7736.52	150.967	0.80	0.55	-0.58	
14874.00	89.420	160.560	6890.56	7711.79	-6854.10	3785.77	1702689.64	14347564.34	39°30'34.6319"N	80°46'45.1707"W	7830.12	151.087	0.97	-0.77	-0.59	
14968.00	89.970	161.770	6891.06	7805.79	-6943.07	3816.12	1702719.97	14347475.42	39°30'33.7519"N	80°46'44.7863"W	7922.69	151.205	1.41	0.59	1.29	
15063.00	89.850	161.980	6891.21	7900.78	-7033.35	3845.67	1702749.51	14347385.17	39°30'32.8589"N	80°46'44.4121"W	8016.06	151.331	0.25	-0.13	0.22	
15157.00	89.780	161.150	6891.52	7994.78	-7122.53	3875.40	1702779.23	14347296.03	39°30'31.9768"N	80°46'44.0357"W	8108.58	151.449	0.89	-0.07	-0.88	
15251.00	89.290	161.740	6892.28	8088.77	-7211.64	3905.31	1702809.13	14347206.95	39°30'31.0954"N	80°46'43.6568"W	8201.17	151.563	0.82	-0.52	0.63	
15346.00	89.720	161.080	6893.10	8183.76	-7301.68	3935.59	1702839.40	14347116.95	39°30'30.2047"N	80°46'43.2733"W	8294.78	151.675	0.83	0.45	-0.69	
15440.00	89.780	161.250	6893.51	8277.76	-7390.64	3965.94	1702869.73	14347028.02	39°30'29.3247"N	80°46'42.8889"W	8387.51	151.781	0.19	0.06	0.18	
15535.00	90.710	161.520	6893.10	8372.76	-7480.67	3996.27	1702900.04	14346938.03	39°30'28.4342"N	80°46'42.5048"W	8481.19	151.888	1.02	0.98	0.28	
15630.00	90.150	161.400	6892.39	8467.75	-7570.74	4026.47	1702930.24	14346848.00	39°30'27.5433"N	80°46'42.1223"W	8574.88	151.994	0.60	-0.59	-0.13	
15724.00	89.780	161.520	6892.45	8561.75	-7659.86	4056.36	1702960.12	14346758.91	39°30'26.6618"N	80°46'41.7438"W	8667.61	152.096	0.41	-0.39	0.13	
15819.00	90.280	161.220	6892.40	8656.75	-7749.88	4086.71	1702990.45	14346668.92	39°30'25.7713"N	80°46'41.3594"W	8761.38	152.196	0.61	0.53	-0.32	
15914.00	90.280	161.480	6891.93	8751.75	-7839.89	4117.09	1703020.82	14346578.95	39°30'24.8810"N	80°46'40.9747"W	8855.19	152.294	0.27	0.00	0.27	
16008.00	89.380	161.810	6892.21	8845.74	-7929.11	4146.69	1703050.41	14346489.77	39°30'23.9985"N	80°46'40.5998"W	8947.95	152.392	1.02	-0.96	0.35	
16103.00	89.690	161.640	6892.98	8940.73	-8019.31	4176.48	1703080.18	14346399.60	39°30'23.1063"N	80°46'40.2226"W	9041.70	152.489	0.37	0.33	-0.18	
16197.00	89.450	160.960	6893.69	9034.73	-8108.35	4206.61	1703110.31	14346310.60	39°30'22.2256"N	80°46'39.8410"W	9134.60	152.580	0.77	-0.26	-0.72	
16292.00	89.850	161.490	6894.27	9129.72	-8198.29	4237.19	1703140.87	14346220.69	39°30'21.3359"N	80°46'39.4537"W	9228.53	152.668	0.70	0.42	0.56	
16386.00	89.200	160.400	6895.05	9223.72	-8287.14	4267.88	1703171.55	14346131.88	39°30'20.4571"N	80°46'39.0650"W	9321.55	152.752	1.35	-0.69	-1.16	
16481.00	89.880	161.710	6895.81	9318.71	-8376.98	4298.72	1703202.38	14346042.07	39°30'19.5683"N	80°46'38.6744"W	9415.56	152.835	1.55	0.72	1.38	

RECEIVED
Office of Oil and Gas
OCT 18 2023
WV Department of
Environmental Protection



Actual Wellpath Report

Embry Unit 1H AWP Proj: 23940'

Page 8 of 13



REFERENCE WELLPATH IDENTIFICATION				
Operator	ANTERO RESOURCES CORPORATION		Well	Embry Unit 1H
Field	Tyler		API	47-095-02827-0000
Facility	Thin Air Pad		Wellbore	Embry Unit 1H AWB
Slot	Slot 2F			

WELLPATH DATA (260 stations)																
MD [ft]	Inclination [°]	Azimuth [°]	TVD [ft]	Vert Sect [ft]	North [ft]	East [ft]	Grid East [US ft]	Grid North [US ft]	Latitude	Longitude	Closure Dist [ft]	Closure Dir [°]	DLS ["/100ft]	Build Rate ["/100ft]	Turn Rate ["/100ft]	Comments
16575.00	89.660	161.070	6896.19	9412.71	-8466.07	4328.71	1703232.36	14345953.02	39°30'18.6871"N	80°46'38.2945"W	9508.53	152.919	0.72	-0.23	-0.68	
16670.00	89.720	161.630	6896.70	9507.71	-8556.08	4359.09	1703262.73	14345863.05	39°30'17.7968"N	80°46'37.9098"W	9602.51	153.002	0.59	0.06	0.59	
16764.00	89.720	161.170	6897.16	9601.70	-8645.17	4389.07	1703292.70	14345773.99	39°30'16.9156"N	80°46'37.5301"W	9695.51	153.083	0.49	0.00	-0.49	
16859.00	89.540	161.300	6897.78	9696.70	-8735.12	4419.63	1703323.24	14345684.08	39°30'16.0258"N	80°46'37.1431"W	9789.56	153.162	0.23	-0.19	0.14	
16953.00	89.110	160.790	6898.88	9790.70	-8824.01	4450.17	1703353.76	14345595.22	39°30'15.1465"N	80°46'36.7564"W	9882.67	153.237	0.71	-0.46	-0.54	
17047.00	89.290	160.530	6900.20	9884.68	-8912.70	4481.29	1703384.88	14345506.57	39°30'14.2692"N	80°46'36.3621"W	9975.88	153.307	0.34	0.19	-0.28	
17142.00	89.940	161.490	6900.83	9979.68	-9002.52	4512.20	1703415.78	14345416.78	39°30'13.3807"N	80°46'35.9706"W	10070.03	153.379	1.22	0.68	1.01	
17236.00	89.690	161.510	6901.14	10073.68	-9091.67	4542.03	1703445.59	14345327.67	39°30'12.4989"N	80°46'35.5929"W	10163.09	153.454	0.27	-0.27	0.02	
17331.00	89.480	161.160	6901.83	10168.67	-9181.67	4572.43	1703475.98	14345237.71	39°30'11.6087"N	80°46'35.2079"W	10257.20	153.527	0.43	-0.22	-0.37	
17426.00	89.540	161.280	6902.64	10263.67	-9271.61	4603.02	1703506.55	14345147.80	39°30'10.7190"N	80°46'34.8206"W	10351.35	153.597	0.14	0.06	0.13	
17520.00	89.140	160.020	6903.72	10357.66	-9360.29	4634.16	1703537.68	14345059.16	39°30'9.8418"N	80°46'34.4261"W	10444.64	153.661	1.41	-0.43	-1.34	
17615.00	89.600	161.270	6904.77	10452.65	-9449.91	4665.64	1703569.15	14344969.57	39°30'8.9552"N	80°46'34.0273"W	10538.93	153.723	1.40	0.48	1.32	
17709.00	89.600	161.260	6905.42	10546.64	-9538.93	4696.83	1703599.33	14344880.59	39°30'8.0747"N	80°46'33.6450"W	10632.12	153.790	0.01	0.00	-0.01	
17804.00	90.150	161.630	6905.63	10641.64	-9628.99	4726.06	1703629.55	14344790.56	39°30'7.1839"N	80°46'33.2622"W	10726.28	153.857	0.70	0.58	0.39	
17898.00	89.780	161.350	6905.69	10735.64	-9718.13	4755.91	1703659.38	14344701.46	39°30'6.3022"N	80°46'32.8843"W	10819.46	153.924	0.49	-0.39	-0.30	
17993.00	89.480	161.090	6906.30	10830.64	-9808.07	4786.49	1703689.95	14344611.56	39°30'5.4125"N	80°46'32.4970"W	10913.69	153.987	0.42	-0.32	-0.27	
18087.00	89.450	161.400	6907.18	10924.63	-9897.07	4816.71	1703720.16	14344522.59	39°30'4.5321"N	80°46'32.1143"W	11006.94	154.049	0.33	-0.03	0.33	
18182.00	89.940	161.420	6907.68	11019.63	-9987.11	4846.99	1703750.44	14344432.58	39°30'3.6414"N	80°46'31.7308"W	11101.16	154.112	0.52	0.52	0.02	
18276.00	90.090	161.820	6907.66	11113.63	-10076.27	4876.79	1703780.22	14344343.46	39°30'2.7596"N	80°46'31.3536"W	11194.38	154.174	0.27	0.16	0.21	
18371.00	89.850	160.860	6907.71	11208.62	-10166.22	4907.34	1703810.76	14344253.55	39°30'1.8698"N	80°46'30.9667"W	11288.67	154.233	0.84	-0.25	-0.80	
18466.00	89.480	160.820	6908.26	11303.62	-10255.95	4938.52	1703841.93	14344163.85	39°30'0.9821"N	80°46'30.5718"W	11383.04	154.288	0.39	-0.39	-0.04	
18560.00	89.880	161.380	6908.79	11397.62	-10344.88	4968.97	1703872.36	14344074.95	39°30'0.1025"N	80°46'30.1862"W	11476.38	154.344	0.73	0.43	0.60	
18654.00	89.820	161.800	6909.04	11491.62	-10434.07	4998.66	1703902.04	14343985.80	39°29'59.2203"N	80°46'29.8104"W	11569.63	154.402	0.45	-0.06	0.45	
18749.00	89.510	161.260	6909.59	11586.61	-10524.18	5028.75	1703932.12	14343895.73	39°29'58.3290"N	80°46'29.4293"W	11663.90	154.460	0.66	-0.33	-0.57	
18844.00	90.030	162.150	6909.97	11681.60	-10614.37	5058.57	1703961.93	14343805.57	39°29'57.4368"N	80°46'29.0518"W	11758.15	154.519	1.09	0.55	0.94	
18938.00	89.170	161.490	6910.63	11775.59	-10703.68	5087.90	1703991.24	14343716.30	39°29'56.5535"N	80°46'28.6805"W	11851.39	154.576	1.15	-0.91	-0.70	
19033.00	89.600	161.300	6911.65	11870.58	-10793.71	5118.21	1704021.54	14343626.31	39°29'55.6629"N	80°46'28.2968"W	11945.72	154.630	0.49	0.45	-0.20	
19128.00	90.030	161.490	6911.95	11965.58	-10883.74	5148.52	1704051.84	14343536.31	39°29'54.7723"N	80°46'27.9130"W	12040.06	154.684	0.49	0.45	0.20	
19222.00	88.860	160.200	6912.87	12059.57	-10972.53	5179.36	1704082.66	14343447.56	39°29'53.8940"N	80°46'27.5224"W	12133.51	154.731	1.85	-1.24	-1.37	
19317.00	89.690	160.170	6914.07	12154.55	-11061.90	5211.56	1704114.85	14343358.23	39°29'53.0100"N	80°46'27.1145"W	12228.08	154.774	0.87	0.87	-0.03	

RECEIVED
Office of Oil and Gas
OCT 18 2023
WV Department of
Environmental Protection



Actual Wellpath Report

Embry Unit 1H AWP Proj: 23940'
Page 9 of 13



REFERENCE WELLPATH IDENTIFICATION				
Operator	ANTERO RESOURCES CORPORATION		Well	Embry Unit 1H
Field	Tyler		API	47-095-02827-0000
Facility	Thin Air Pad		Wellbore	Embry Unit 1H AWP
Slot	Slot 2F			

WELLPATH DATA (260 stations)																
MD [ft]	Inclination [°]	Azimuth [°]	TVD [ft]	Vert Sect [ft]	North [ft]	East [ft]	Grid East [US ft]	Grid North [US ft]	Latitude	Longitude	Closure Dist [ft]	Closure Dir [°]	DLS ["/100ft]	Build Rate ["/100ft]	Turn Rate ["/100ft]	Comments
19412.00	89.910	161.760	6914.40	12249.55	-11151.70	5242.54	1704145.82	14343268.46	39°29'52.1217"N	80°46'26.7222"W	12322.53	154.821	1.69	0.23	1.67	
19506.00	89.320	161.350	6915.03	12343.54	-11240.87	5272.28	1704175.55	14343179.33	39°29'51.2397"N	80°46'26.3456"W	12415.88	154.872	0.76	-0.63	-0.44	
19601.00	89.450	160.570	6916.05	12438.54	-11330.67	5303.27	1704206.53	14343089.57	39°29'50.3514"N	80°46'25.9532"W	12510.34	154.918	0.83	0.14	-0.82	
19695.00	90.220	161.800	6916.32	12532.53	-11419.59	5333.74	1704236.99	14343000.68	39°29'49.4718"N	80°46'25.5674"W	12603.80	154.964	1.37	0.82	1.10	
19790.00	89.660	161.350	6916.42	12627.53	-11509.66	5363.92	1704267.16	14342910.64	39°29'48.5808"N	80°46'25.1852"W	12698.19	155.013	0.65	-0.59	-0.26	
19884.00	90.310	161.800	6916.45	12721.53	-11598.84	5393.63	1704296.86	14342821.49	39°29'47.6987"N	80°46'24.8091"W	12791.58	155.061	0.84	0.69	0.48	
19978.00	89.850	161.310	6916.31	12815.52	-11688.02	5423.37	1704326.59	14342732.36	39°29'46.8166"N	80°46'24.4326"W	12884.98	155.108	0.71	-0.49	-0.52	
20073.00	89.600	161.310	6916.77	12910.52	-11778.00	5453.82	1704357.02	14342642.40	39°29'45.9265"N	80°46'24.0472"W	12979.43	155.153	0.26	-0.26	0.00	
20167.00	89.660	161.460	6917.38	13004.52	-11867.08	5483.82	1704387.01	14342553.36	39°29'45.0453"N	80°46'23.6673"W	13072.87	155.198	0.17	0.06	0.16	
20261.00	89.910	161.240	6917.73	13098.51	-11956.15	5513.88	1704417.06	14342464.33	39°29'44.1643"N	80°46'23.2867"W	13166.33	155.242	0.35	0.27	-0.23	
20356.00	89.880	161.320	6917.90	13193.51	-12046.12	5544.37	1704447.53	14342374.39	39°29'43.2743"N	80°46'22.9007"W	13260.81	155.285	0.09	-0.03	0.08	
20451.00	89.600	161.550	6918.33	13288.51	-12136.18	5574.62	1704477.77	14342284.37	39°29'42.3835"N	80°46'22.5178"W	13355.27	155.329	0.38	-0.29	0.24	
20545.00	89.850	161.520	6918.79	13382.51	-12225.34	5604.39	1704507.53	14342195.25	39°29'41.5016"N	80°46'22.1409"W	13448.72	155.372	0.27	0.27	-0.03	
20640.00	89.720	161.390	6919.14	13477.50	-12315.40	5634.60	1704537.73	14342105.22	39°29'40.6107"N	80°46'21.7584"W	13543.19	155.415	0.19	-0.14	-0.14	
20733.00	89.780	161.210	6919.55	13570.50	-12403.49	5664.42	1704567.53	14342017.16	39°29'39.7393"N	80°46'21.3809"W	13635.70	155.455	0.20	0.06	-0.19	
20828.00	89.570	161.450	6920.09	13665.50	-12493.49	5694.83	1704597.93	14341927.20	39°29'38.8491"N	80°46'20.9958"W	13730.20	155.495	0.34	-0.22	0.25	
20923.00	89.480	161.280	6920.87	13760.49	-12583.51	5725.18	1704628.28	14341837.22	39°29'37.9586"N	80°46'20.6115"W	13824.70	155.536	0.20	-0.09	-0.18	
21018.00	89.660	161.410	6921.59	13855.49	-12673.52	5755.57	1704658.65	14341747.25	39°29'37.0683"N	80°46'20.2269"W	13919.22	155.575	0.23	0.19	0.14	
21112.00	89.600	161.360	6922.19	13949.49	-12762.60	5785.58	1704688.64	14341658.20	39°29'36.1872"N	80°46'19.8470"W	14012.74	155.614	0.08	-0.06	-0.05	
21207.00	89.630	161.410	6922.83	14044.48	-12852.62	5815.90	1704718.96	14341568.21	39°29'35.2966"N	80°46'19.4631"W	14107.25	155.653	0.06	0.03	0.05	
21302.00	89.600	161.020	6923.47	14139.48	-12942.56	5846.49	1704749.53	14341478.31	39°29'34.4070"N	80°46'19.0758"W	14201.81	155.690	0.41	-0.03	-0.41	
21396.00	89.660	161.190	6924.08	14233.48	-13031.49	5876.93	1704779.96	14341389.41	39°29'33.5273"N	80°46'18.6904"W	14295.39	155.726	0.19	0.06	0.18	
21491.00	89.380	161.580	6924.87	14328.47	-13121.52	5907.25	1704810.27	14341299.42	39°29'32.6367"N	80°46'18.3065"W	14389.93	155.763	0.51	-0.29	0.41	
21585.00	89.750	161.290	6925.59	14422.47	-13210.63	5937.18	1704840.19	14341210.35	39°29'31.7553"N	80°46'17.9277"W	14483.47	155.800	0.50	0.39	-0.31	
21679.00	89.690	161.310	6926.05	14516.47	-13299.66	5967.32	1704870.31	14341121.35	39°29'30.8746"N	80°46'17.5462"W	14577.03	155.835	0.07	-0.06	0.02	
21774.00	89.720	161.340	6926.54	14611.46	-13389.66	5997.74	1704900.72	14341031.39	39°29'29.9844"N	80°46'17.1611"W	14671.60	155.871	0.04	0.03	0.03	
21868.00	89.630	161.520	6927.07	14705.46	-13478.76	6027.67	1704930.64	14340942.32	39°29'29.1030"N	80°46'16.7821"W	14765.16	155.906	0.21	-0.10	0.19	
21963.00	89.850	161.380	6927.50	14800.46	-13568.83	6057.89	1704960.85	14340852.29	39°29'28.2121"N	80°46'16.3996"W	14859.72	155.941	0.27	0.23	-0.15	
22058.00	89.720	161.050	6927.86	14895.46	-13658.77	6088.49	1704991.43	14340762.39	39°29'27.3224"N	80°46'16.0123"W	14954.32	155.975	0.37	-0.14	-0.35	
22152.00	89.630	160.860	6928.39	14989.45	-13747.62	6119.16	1705022.09	14340673.57	39°29'26.4435"N	80°46'15.6239"W	15047.96	156.006	0.22	-0.10	-0.20	

RECEIVED
 Office of Oil and Gas
 OCT 18 2023
 WV Department of
 Environmental Protection



Actual Wellpath Report

Embry Unit 1H AWP Proj: 23940'

Page 10 of 13



REFERENCE WELLPATH IDENTIFICATION			
Operator	ANTERO RESOURCES CORPORATION	Well	Embry Unit 1H
Field	Tyler	API	47-095-02827-0000
Facility	Thin Air Pad	Wellbore	Embry Unit 1H AWB
Slot	Slot 2F		

WELLPATH DATA (260 stations) † = interpolated, ‡ = extrapolated station																
MD [ft]	Inclination [°]	Azimuth [°]	TVD [ft]	Vert Sect [ft]	North [ft]	East [ft]	Grid East [US ft]	Grid North [US ft]	Latitude	Longitude	Closure Dist [ft]	Closure Dir [°]	DLS ["/100ft]	Build Rate ["/100ft]	Turn Rate ["/100ft]	Comments
22246.00	89.720	161.230	6928.92	15083.45	-13836.52	6149.69	1705052.61	14340584.71	39°29'25.5641"N	80°46'15.2374"W	15141.60	156.037	0.41	0.10	0.39	
22340.00	88.950	161.310	6930.01	15177.44	-13925.54	6179.87	1705082.78	14340495.73	39°29'24.6835"N	80°46'14.8553"W	15235.20	156.069	0.82	-0.82	0.09	
22435.00	88.620	161.270	6932.03	15272.42	-14015.50	6210.34	1705113.24	14340405.80	39°29'23.7937"N	80°46'14.4696"W	15329.79	156.102	0.35	-0.35	-0.04	
22529.00	88.400	160.390	6934.47	15366.39	-14104.25	6241.20	1705144.08	14340317.08	39°29'22.9157"N	80°46'14.0789"W	15423.44	156.130	0.96	-0.23	-0.94	
22624.00	89.200	161.100	6936.46	15461.36	-14193.92	6272.52	1705175.39	14340227.45	39°29'22.0287"N	80°46'13.6823"W	15518.11	156.159	1.13	0.84	0.75	
22718.00	88.710	160.900	6938.18	15555.35	-14282.78	6303.12	1705205.98	14340138.62	39°29'21.1497"N	80°46'13.2950"W	15611.76	156.188	0.56	-0.52	-0.21	
22813.00	89.110	161.110	6939.98	15650.33	-14372.59	6334.03	1705236.88	14340048.85	39°29'20.2613"N	80°46'12.9036"W	15706.41	156.217	0.48	0.42	0.22	
22907.00	89.050	161.130	6941.49	15744.32	-14461.52	6364.44	1705267.28	14339959.95	39°29'19.3816"N	80°46'12.5185"W	15800.06	156.246	0.07	-0.06	0.02	
23001.00	89.080	161.320	6943.03	15838.31	-14550.51	6394.69	1705297.52	14339871.00	39°29'18.5013"N	80°46'12.1356"W	15893.69	156.275	0.20	0.03	0.20	
23096.00	88.860	161.250	6944.74	15933.29	-14640.47	6425.17	1705327.98	14339781.08	39°29'17.6114"N	80°46'11.7498"W	15988.32	156.305	0.24	-0.23	-0.07	
23190.00	90.770	161.830	6945.04	16027.28	-14729.63	6454.93	1705357.73	14339691.95	39°29'16.7295"N	80°46'11.3731"W	16081.92	156.336	2.12	2.03	0.62	
23284.00	89.350	161.110	6944.94	16121.28	-14818.75	6484.81	1705387.60	14339602.87	39°29'15.8479"N	80°46'10.9950"W	16175.54	156.365	1.69	-1.51	-0.77	
23379.00	89.420	161.440	6945.96	16216.27	-14908.72	6515.30	1705418.08	14339512.93	39°29'14.9579"N	80°46'10.6090"W	16270.19	156.394	0.36	0.07	0.35	
23473.00	89.230	161.290	6947.07	16310.26	-14997.79	6545.34	1705448.10	14339423.90	39°29'14.0769"N	80°46'10.2288"W	16363.83	156.423	0.26	-0.20	-0.16	
23567.00	89.480	161.100	6948.13	16404.26	-15086.76	6575.64	1705478.39	14339334.96	39°29'13.1968"N	80°46'9.8453"W	16457.50	156.450	0.33	0.27	-0.20	
23662.00	89.350	161.220	6949.10	16499.25	-15176.67	6606.31	1705509.05	14339245.09	39°29'12.3074"N	80°46'9.4570"W	16552.18	156.477	0.19	-0.14	0.13	
23756.00	89.780	161.270	6949.81	16593.25	-15265.67	6636.53	1705539.26	14339156.12	39°29'11.4270"N	80°46'9.0744"W	16645.85	156.504	0.46	0.46	0.05	
23851.00	90.180	161.400	6949.84	16688.25	-15355.68	6666.94	1705569.65	14339066.16	39°29'10.5367"N	80°46'8.6896"W	16740.52	156.531	0.44	0.42	0.14	
23915.00	90.000	161.270	6949.74	16752.24	-15416.31	6687.42	1705590.13	14339005.55	39°29'9.9369"N	80°46'8.4303"W	16804.29	156.549	0.35	-0.28	-0.20	
23940.00‡	90.000	161.270	6949.74	16777.24	-15439.99	6695.45	1705598.15	14338981.88	39°29'9.7027"N	80°46'8.3287"W	16829.21	156.556	0.00	0.00	0.00	Projected MD at TD: 23940'

RECEIVED
 Office of Oil and Gas
 OCT 18 2023
 WV Department of
 Environmental Protection



Actual Wellpath Report

Embry Unit 1H AWP Proj: 23940'

Page 11 of 13



REFERENCE WELLPATH IDENTIFICATION			
Operator	ANTERO RESOURCES CORPORATION	Well	Embry Unit 1H
Field	Tyler	API	47-095-02827-0000
Facility	Thin Air Pad	Wellbore	Embry Unit 1H AWB
Slot	Slot 2F		

HOLE & CASING SECTIONS - Ref Wellbore: Embry Unit 1H AWB Ref Wellpath: Embry Unit 1H AWP Proj: 23940'									
String/Diameter	Start MD [ft]	End MD [ft]	Interval [ft]	Start TVD [ft]	End TVD [ft]	Start N/S [ft]	Start E/W [ft]	End N/S [ft]	End E/W [ft]
20in Conductor	25.50	126.00	100.50	25.50	126.00	0.00	0.00	-0.17	-0.16
17.5in Open Hole	126.00	464.00	338.00	126.00	464.00	-0.17	-0.16	-0.84	-0.90
13.375in Casing Surface	25.50	444.00	418.50	25.50	444.00	0.00	0.00	-0.89	-0.92
12.25in Open Hole	464.00	3542.00	3078.00	464.00	3472.34	-0.84	-0.90	377.67	486.25
9.625in Casing Intermediate	25.50	3516.00	3490.50	25.50	3446.83	0.00	0.00	373.56	483.37
8.75in Open Hole	3542.00	5469.00	1927.00	3472.34	5341.95	377.67	486.25	656.67	853.85
8.5in Open Hole	5469.00	23940.00	18471.00	5341.95	6949.74	656.67	853.85	-15439.99	6695.45
5.5in Casing Production	25.50	23920.00	23894.50	25.50	6949.74	0.00	0.00	-15421.05	6689.03

RECEIVED
 Office of Oil & Gas Regulation
 OCT 18 2014
 WV Department of Environmental Protection



Actual Wellpath Report

Embry Unit 1H AWP Proj: 23940'

Page 12 of 13



REFERENCE WELLPATH IDENTIFICATION			
Operator	ANTERO RESOURCES CORPORATION	Well	Embry Unit 1H
Field	Tyler	API	47-095-02827-0000
Facility	Thin Air Pad	Wellbore	Embry Unit 1H AWB
Slot	Slot 2F		

TARGETS								
Name	TVD [ft]	North [ft]	East [ft]	Grid East [US ft]	Grid North [US ft]	Latitude	Longitude	Shape
Embry Unit 1H POE Rev-3	6858.00	337.37	1295.01	1700199.86	14354752.96	39°31'45.7666"N	80°47'16.7331"W	point
Embry Unit 1H BHL Rev-3	6885.00	-15913.03	6870.01	1705772.65	14338509.02	39°29'5.0230"N	80°46'6.1178"W	point
Embry Unit 1H BHL Rev-4	6885.00	-15437.82	6706.98	1705609.68	14338984.05	39°29'9.7239"N	80°46'8.1815"W	point
Embry Unit 1H LP Rev-3	6885.00	153.12	1358.22	1700263.05	14354568.78	39°31'43.9440"N	80°47'15.9319"W	point
Embry Unit 1H 50' L/R Hard Line Rev-2	7000.00	-7550.22	4000.99	1702904.77	14346868.50	39°30'27.7467"N	80°46'42.4467"W	rectangle
2D Rectangle 16677.7 x 100.								

WELLPATH COMPOSITION - Ref Wellbore: Embry Unit 1H AWB Ref Wellpath: Embry Unit 1H AWP Proj: 23940'					
Start MD [ft]	End MD [ft]	Positional Uncertainty Model	Log Name/Comment	Wellbore	Survey Date
25.50	465.00	Gyrodata 2015 - GC+WMR+DPIPE	01 Gyrodata MS Gyro <17-1/2"> (100'-465')	Embry Unit 1H AWB	2/6/2023
465.00	3470.00	BH NaviTrak (2019) (Axial Corr+HRGM)	02 APS EM <12-1/4"> (465')(590'-3470')	Embry Unit 1H AWB	2/6/2023
3470.00	5380.00	BH NaviTrak (2019) (Axial Corr+HRGM)	03 APS EM <8-3/4"> (3470')(3584'-5380')	Embry Unit 1H AWB	2/21/2023
5380.00	23940.00	BH AutoTrak Curve/eXpress (2019) (HRGM, Short spacing)	04 BH AT Curve <8-1/2"> (5380')(5514'-23915')	Embry Unit 1H AWB	2/21/2023

RECEIVED
 Office of Oil
 WV Department of
 Environmental Protection
 OCT 18 2023



Actual Wellpath Report

Embry Unit 1H AWP Proj: 23940'

Page 13 of 13



REFERENCE WELLPATH IDENTIFICATION			
Operator	ANTERO RESOURCES CORPORATION	Well	Embry Unit 1H
Field	Tyler	API	47-095-02827-0000
Facility	Thin Air Pad	Wellbore	Embry Unit 1H AWB
Slot	Slot 2F		

COMMENTS
<p>Wellpath general comments API: 47-095-02827-0000 BH Job #: 111653782 Rig: H&P 317 Duration: 2/22/2023-3/1/2023 Gyrodata MS Gyro <17-1/2"> (100'-465') APS EM <12-1/4"> (465')(590'-3470') APS EM <8-3/4"> (3470')(3584'-5380') BH AT Curve <8-1/2"> (5380')(5514'-23915') Sycamore: 6732' MD Middlesex: 6875' MD Burkett: 7033' MD Tully: 7096' MD Marcellus POE: 7264' MD Projected MD at TD: 23940'</p>

WV Department of
Environmental Protection

OCT 18 2023

RECEIVED
Office of Oil and Gas