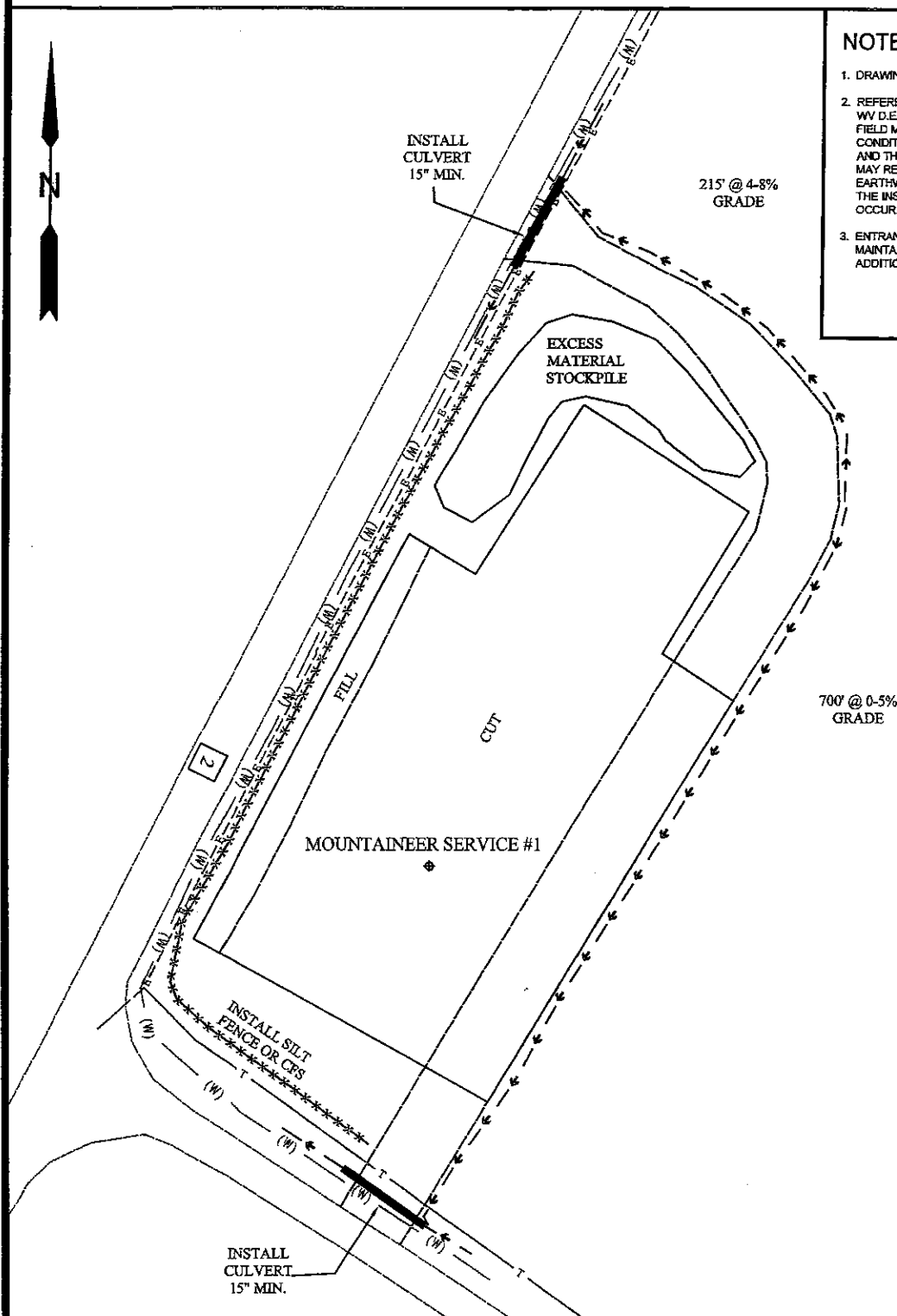


PROPOSED MOUNTAINEER SERVICE #1



NOTES:

1. DRAWING NOT TO SCALE
2. REFERENCE IS HEREBY MADE TO THE WV D.E.P. OFFICE OF OIL & GAS, "EROSION AND SEDIMENT CONTROL FIELD MANUAL" FOR REQUIREMENTS AND BMPs FOR AVERAGE FIELD CONDITIONS CONCERNING THE MAINTENANCE OF EXISTING ROADS AND THE CONSTRUCTION OF PROPOSED ROADS. FIELD CONDITIONS MAY REQUIRE VARIANCE FROM THESE GUIDELINES AND THE EARTHWORK CONTRACTOR IS RESPONSIBLE FOR NOTIFICATION TO THE INSPECTOR AND THE OPERATOR SHOULD THESE CONDITIONS OCCUR.
3. ENTRANCES ONTO PUBLIC ROADS SHALL BE CONSTRUCTED OR MAINTAINED IN ACCORDANCE WITH WV D.O.T. REGULATIONS. ADDITIONAL PERMITS MAY BE REQUIRED.

RECEIVED
Office of Oil and Gas

JAN 28 2025

WV Department of
Environmental Protection



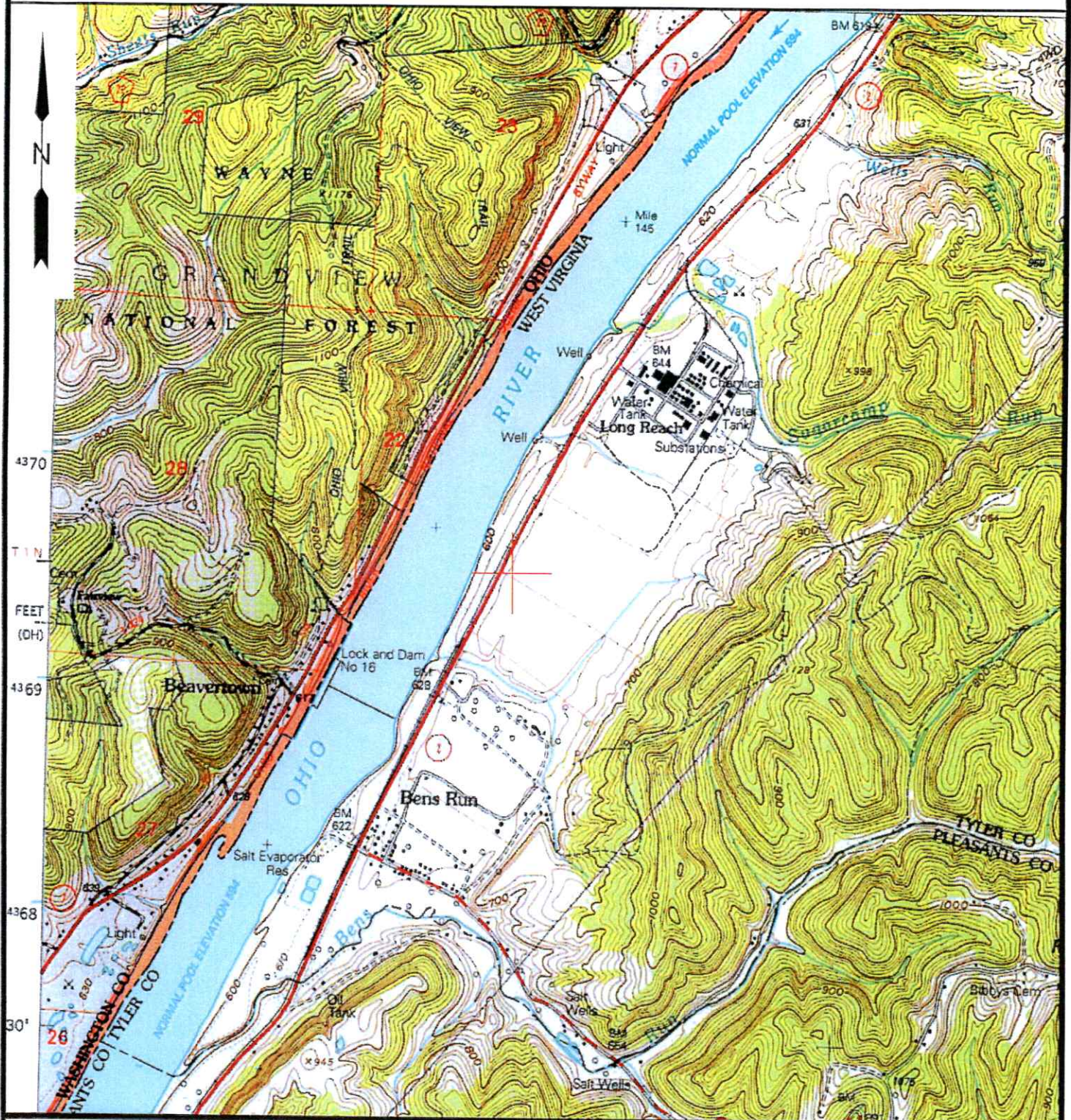
WV Department of Oil and Gas | Division of Oil and Gas | 1500 Kanawha Blvd. S., Suite 1000 | Charleston, WV 25305 | 800-441-2222
2024 and 2025 are trademarks of the State of West Virginia. All rights reserved.

COUNTY	DISTRICT
TYLER	UNION
DRAWN BY	JOB NO.
J.D.R.	8955

OPERATOR:
PREPARED FOR:
MOUNTAINEER WELL
SERVICES LLC

DATE	SCALE
12-09-24	NONE

PROPOSED MOUNTAINEER SERVICE #1 4709502922



TOPO SECTION:

BENS RUN 7.5'

COUNTY

DISTRICT

TYLER

UNION

DRAWN BY

JOB NO.

J.D.R.

8955

OPERATOR:

PREPARED FOR:
MOUNTAINEER WELL
SERVICES LLC

DATE

SCALE

12-09-24

1"=2000'

RECEIVED
Office of Oil and Gas

JAN 28 2025

WV Department of
Environmental Protection

03/21/2025

MOUNTAINEER WELL SERVICES, LLC

18.95 AC. ± SUBSURFACE LEASE

WELL NO. MOUNTAINEER SERVICE 1

WELL NO. MOUNTAINEER SERVICE 1
STATE PLANE COORDINATES
NORTH ZONE (NAD '83)

N. 359,922.69
E. 1,516,761.81

LAT=(N) 39.477132
LONG=(W) 81.100447

UTM (NAD '83) (METERS)
N. 4,369,731.468
E. 491,360.796

BENS RUN LAND COMPANY
LIMITED PARTNERSHIP
P/O 491.06 ACRES±
TM 10-7-2

REVISED
SUBSURFACE
LEASE
BOUNDARY

WELL NO.
MOUNTAINEER
SERVICE 1

S 01°46' E
228.38'

TYLER CO.
DEVELOPMENT
AUTHORITY INC.
2.14 ACRES±
TM 10-7-2.13

PROVIRON
AMERICA INC.
2.00 ACRES±
TM 10-7-2.3

STEVE SIMPSON
DISPOSAL WELL
1 ACRE±
TM 10-7-2.10

MPM SILICONES LLC
1190.39 ACRES±
TM 10-7-1

4.5 ACRES±
ORIGINAL
SURFACE/SUBSURFACE
LEASE

TYLER CO.
DEVELOPMENT
AUTHORITY INC.
7.018 ACRES±
TM 10-7-2.5

CAPITAL SAND
PROPPANTS LLC
8.9 ACRES±
TM 10-7-2.8

REVISED
SUBSURFACE
LEASE
BOUNDARY

PROVIRON INC.
10.00 ACRES±
TM 10-7-2.9

NOTES ON SURVEY

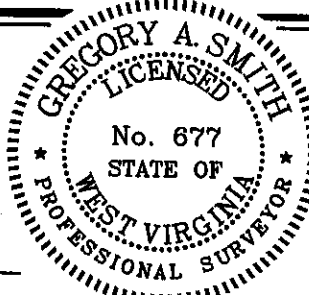
1. TIES TO WELLS, CORNERS AND REFERENCES ARE BASED ON GRID NORTH FOR THE WV STATE PLANE COORDINATE SYSTEM, NORTH ZONE, NAD '83.
2. TRACT BOUNDARY INFORMATION PROVIDED BY CLIENT.
3. SURFACE OWNER AND ADJOINER INFORMATION TAKEN FROM THE ASSESSOR AND COUNTY CLERK RECORDS OF MARSHALL COUNTY IN OCTOBER, 2018.
4. WELL LAT/LONG (NAD'83) ESTABLISHED BY DGPS (SURVEY GRADE).
5. PLAT UPDATED TO SHOW PROPOSED WELL NO./NAME CHANGE.



12 Vashons Drive | P.O. Box 900 | Blountville, WV 25901 | 504-483-8654
1412 Kanawha Boulevard, East | Charleston, WV 25301 | 504-346-1993
354 East Beckley Highway | Beckley, WV 25801 | 504-258-2266

I THE UNDERSIGNED, HEREBY CERTIFY THAT THIS PLAT IS CORRECT TO THE BEST OF MY KNOWLEDGE AND BELIEF AND SHOWS ALL THE INFORMATION REQUIRED BY LAW AND THE REGULATIONS ISSUED AND PRESCRIBED BY THE DIVISION OF ENVIRONMENTAL PROTECTION.

P.S. 2140 Gregory A. Smith



(+) DENOTES LOCATION OF WELL ON UNITED STATES TOPOGRAPHIC MAPS.

DATE SEPTEMBER 2, 20 21
REV. JANUARY 13, 2025

OPERATORS WELL NO. MOUNTAINEER SERVICE 1

API WELL NO. 47 - 095 - 02922
STATE COUNTY PERMIT

MINIMUM DEGREE OF ACCURACY 1 / 2500 FILE NO. 8955_P1R6.dwg
HORIZONTAL & VERTICAL CONTROL DETERMINED BY DGPS (SURVEY GRADE TIE TO CORS NETWORK) SCALE 1" = 400'

STATE OF WEST VIRGINIA
DIVISION OF ENVIRONMENTAL PROTECTION
OFFICE OF OIL AND GAS



WELL TYPE: OIL GAS BRINE & LIQUID INJECTION X WASTE DISPOSAL IF "GAS" PRODUCTION STORAGE DEEP X SHALLOW
LOCATION: GROUND ELEVATION 636' WATERSHED OHIO RIVER
DISTRICT UNION COUNTY TYLER QUADRANGLE BENS RUN 7.5'
SURFACE OWNER BENS RUN LAND COMPANY LIMITED PARTNERSHIP ACREAGE 4.5 ± (4.86 ± CALC.) OF 491.06
ROYALTY OWNER BENS RUN LAND COMPANY LIMITED PARTNERSHIP ACREAGE 18.95 ± (CALC.)
PROPOSED WORK: DRILL X CONVERT DRILL DEEPER REDRILL FRACTURE OR STIMULATE PLUG OFF OLD FORMATION PERFORATE NEW FORMATION PLUG AND ABANDON CLEAN OUT AND REPLUG OTHER
PHYSICAL CHANGE IN WELL (SPECIFY) TARGET FORMATION JUNIATA
ESTIMATED DEPTH 8000'

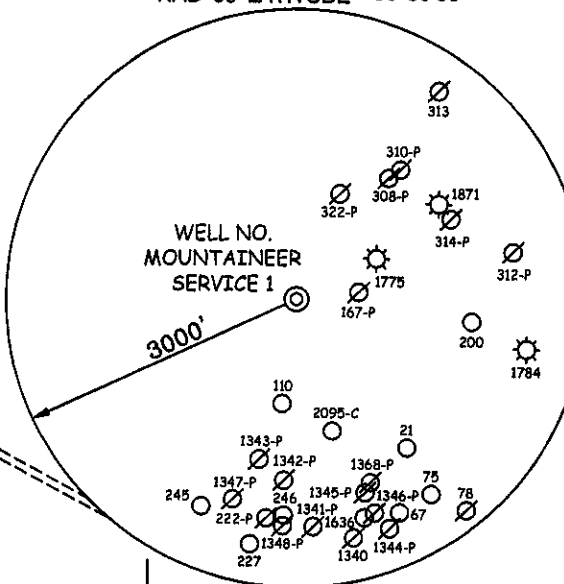
WELL OPERATOR MOUNTAINEER WELL SERVICES, LLC
ADDRESS P.O. BOX 20265
COLUMBUS, OH 43220

DESIGNATED AGENT PATRICK BRAKE
ADDRESS P.O. BOX 2722
BUCKHANNON, WV 26201

COUNTY NAME PERMIT

4,837' NAD '83 LATITUDE 39°30'00"

NAD '83 LONGITUDE 80°05'00"



REFERENCES

