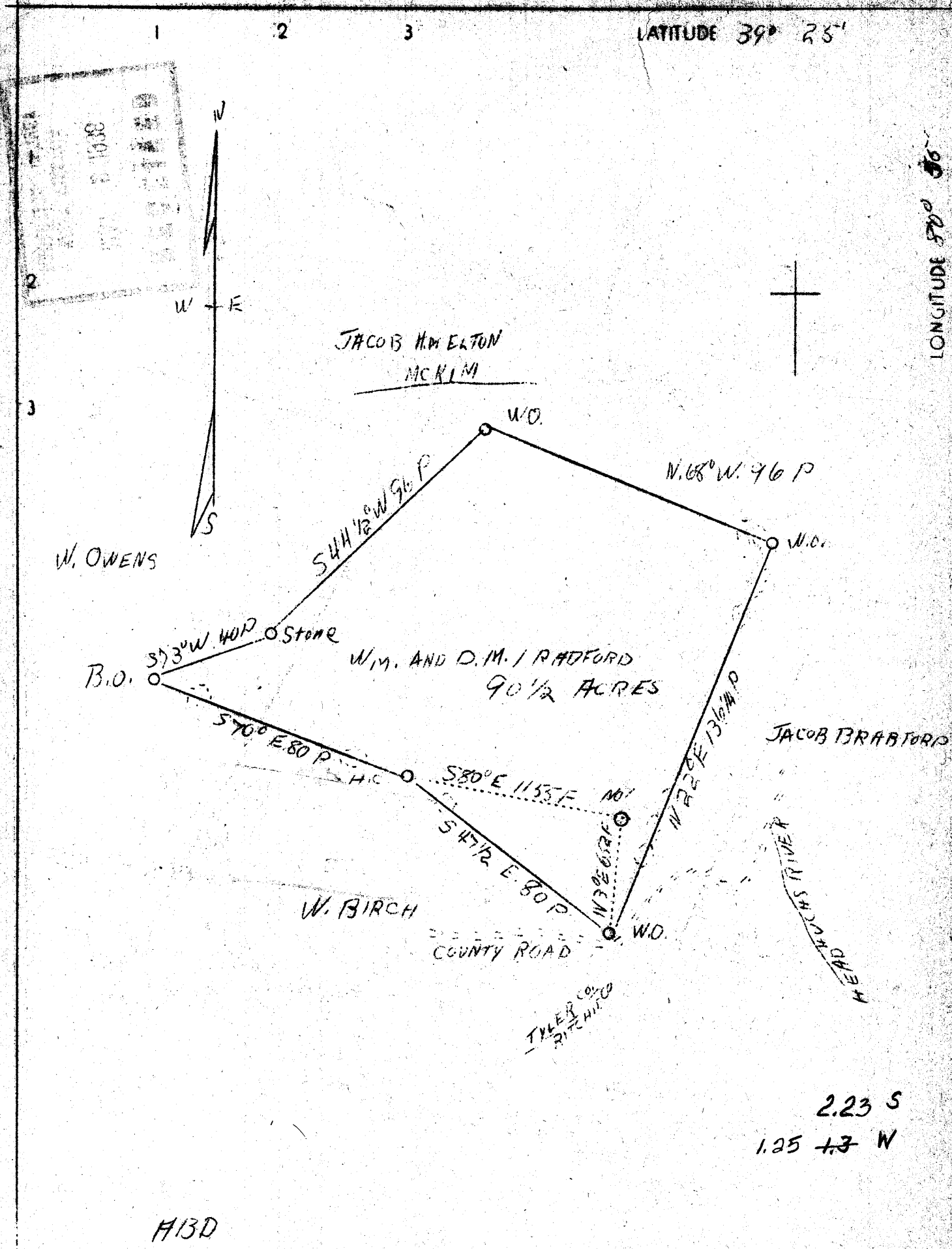


LATITUDE 39° 25'

LONGITUDE 80° 36'



Company F. E. Pritchard

Address Pennsboro, W. Va.

Farm Wm. and D. M. Bradford

Tract 1 Acres 90 1/2 Lease No. _____

Well (Farm) No. 1 Serial No. _____

Elevation (Spirit Level) 1254

Quadrangle West Union W.C.

County Tyler District Meigs

Engineer J. V. Dunbar

Engineer's Registration No. 65

File No. C-23-L Drawing No. _____

Date April 25, 1938 Scale 1" = 40 Feet

STATE OF WEST VIRGINIA
Department of Mines
OIL AND GAS DIVISION
CHARLESTON

WELL LOCATION MAP

File No. TYI-66-A

Denotes location of well on United States Topographic Maps, scale 1 to 62,500, latitude and longitude lines being represented by border lines as shown.

Denotes one foot section on the top of the land.

