

*Abandonment*

Company	Necly, Roby & Ray Oil & Gas Co.		
Address	St. Marys, W. Va.		
Farm	Edward Thorn		
Tract	Acres	60	Lease No.
Well (Farm) No.	1	Serial No.	
Elevation (Spirit Level)	843		
Quadrangle	St. Marys	W. Va. - 0.	<b>(NE)</b>
County	Tyler	District	Union
Engineer	Parker E. Peters		
Engineer's Registration No.	485		
File No.	Drawing No.		
Date	Aug. 14, 1937	Scale	1" = 30 Poles

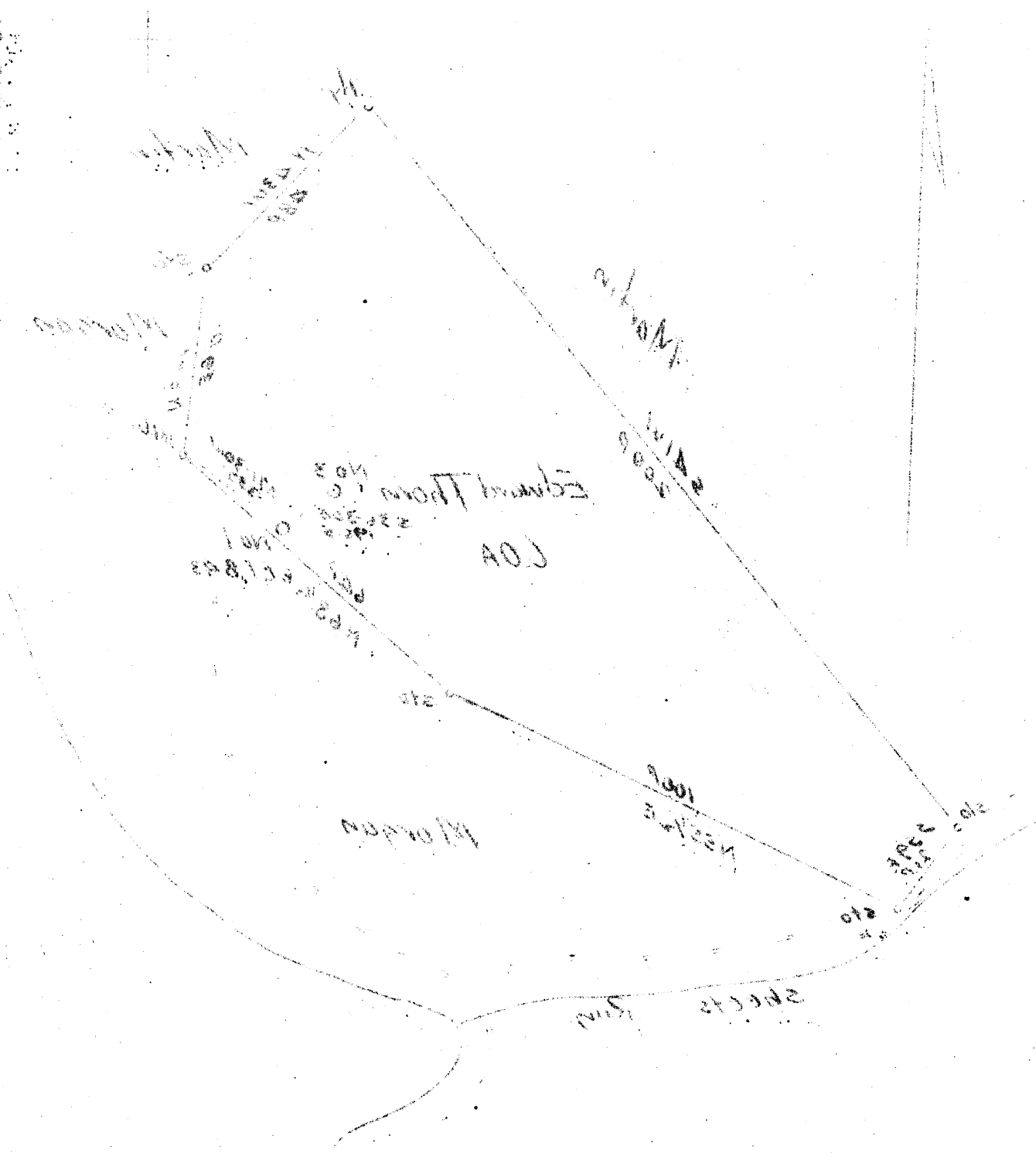
STATE OF WEST VIRGINIA  
 Department of Mines  
 OIL AND GAS DIVISION  
 CHARLESTON

WELL LOCATION MAP  
 File No. TYL-141A

+ Denotes location of well on United States Topographic Maps, scale 1 to 62,500, latitude and longitude lines being represented by border lines as shown.

— Denotes one inch spaces on border line of original tracing.

COMMISSIONER OF GEOL. SURV.



Aerial photograph

UNITED STATES GEOLOGICAL SURVEY  
 DEPARTMENT OF THE INTERIOR  
 BUREAU OF GEOLOGICAL SURVEY

WELL LOCATION MAP

Title No. T-111A

Location of well in United States Territory, scale 1 to 50,000, latitude and longitude lines being represented by border lines as shown.

Indicates one inch space in center line of original tracing.

Company, Noddy, Noddy & Ray Oil Co.  
 Address, St. Louis, Mo.  
 Name, Edward Thomas  
 Street, Howard  
 Well No., 1  
 Elevator (Depth), 435  
 County, St. Louis, Mo.  
 State, Mo.  
 Engineer, J. H. ...  
 Bureau of Geology, No. 435  
 Drawing No., ...  
 Date, Aug. 14, 1937  
 Code I-30705a

