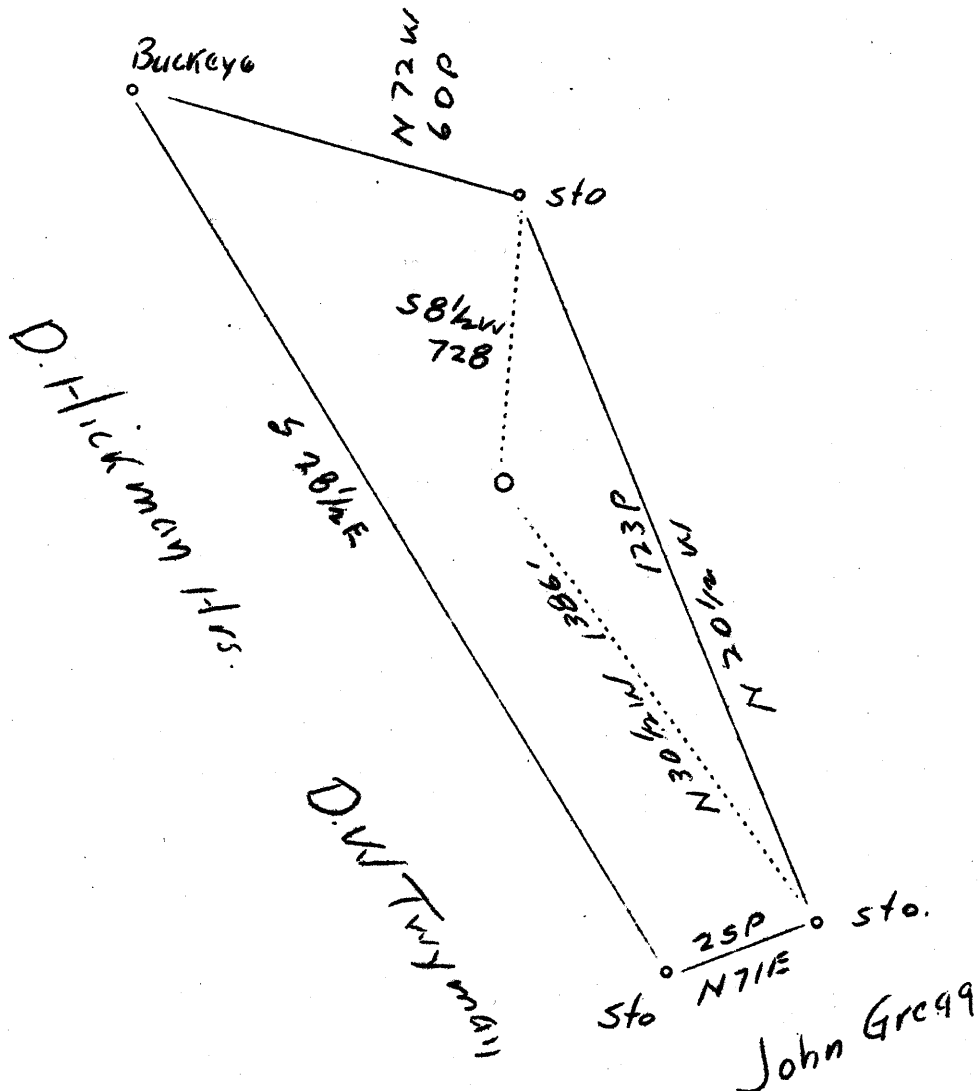


LATITUDE 39° 30'

LONGITUDE 80° 50'



Abandonment

2.82 2.85 W
0.69 0.7 2

Company Geo. McCretchen
 Address Middlebourne, W.Va.
 Farm K.S. Boreman
 Tract Acres 34 Lease No.
 Well (Farm) No. 1 Serial No.
 Elevation (Spirit Level) 805'
 Quadrangle West Union
 County Tyler District Ellsworth
 Engineer J.S. Haught
 Engineer's Registration No. Co. Surv.
 File No. Drawing No.
 Date 8-25-37 Scale 1"-30P.

STATE OF WEST VIRGINIA
 Department of Mines
 OIL AND GAS DIVISION
 CHARLESTON
 WELL LOCATION MAP
 File No. TYL-143A

+ Denotes location of well on United States Topographic Maps, scale 1 to 62,500, latitude and longitude lines being represented by border lines as shown.
 — Denotes one inch spaces on border line of original tracing.

RECEIVED
AUG 20 1937
WEST VIRGINIA
GEOLOGICAL SURVEY