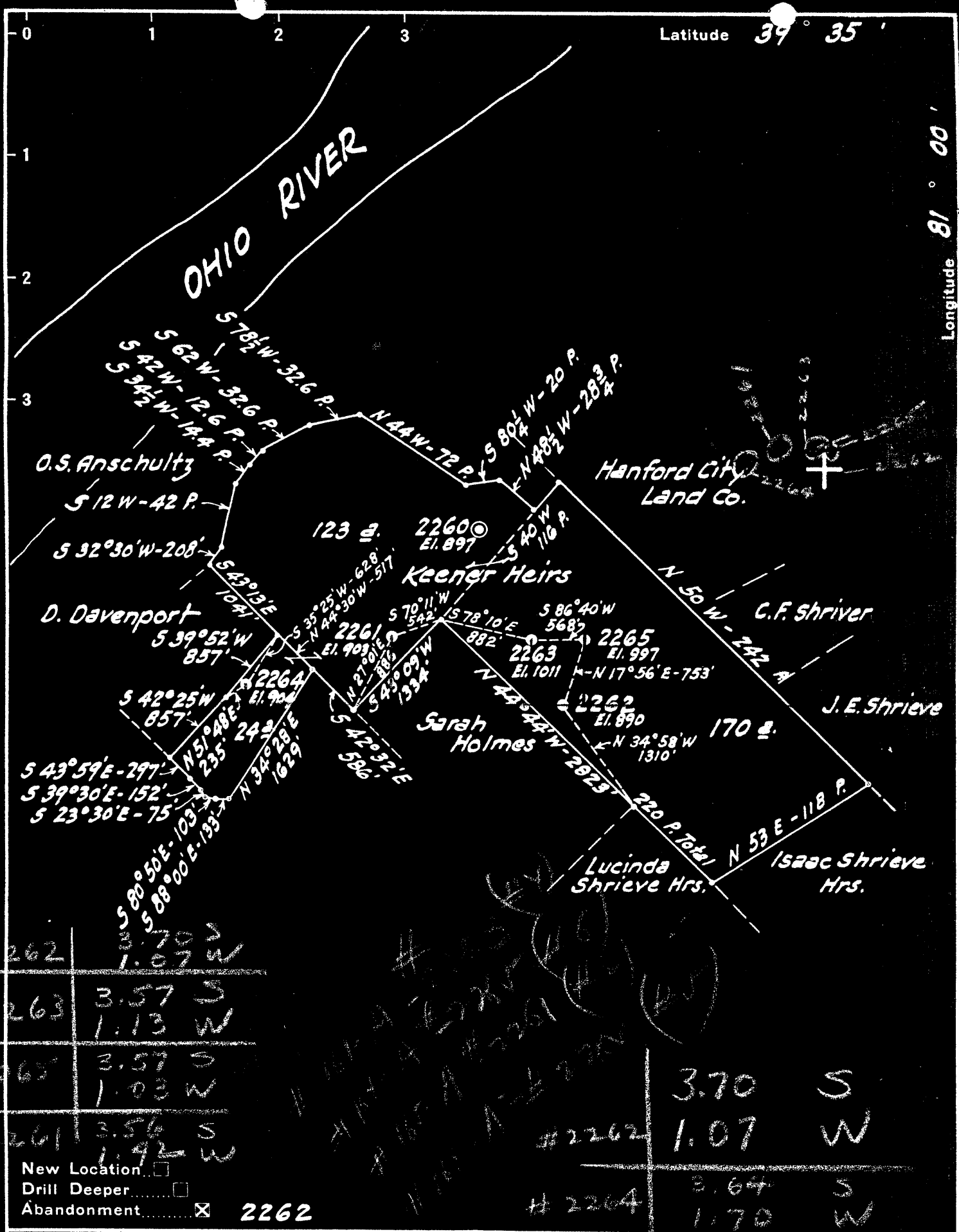


04105



2262	3.70 S	1.07 W
2263	3.57 S	1.13 W
2265	3.57 S	1.03 W
2261	3.56 S	1.92 W

#2262	3.70 S	1.07 W
#2264	3.64 S	1.70 W

New Location   
 Drill Deeper   
 Abandonment  2262

Company Hope Constr. & Ref. Co.  
 Address Clarksburg, W. Va.  
 Farm Keener Heirs  
 Tract \_\_\_\_\_ Acres 317 Lease No. \_\_\_\_\_  
 Well (Farm) No. 2-3-4-5-6 Serial No. 2261-2262-2263  
 Elevation (Spirit Level) See Above  
 Quadrangle New Metamoras  
 County Tyler District Union SE  
 Engineer J. Delark  
 Engineer's Registration No. 744  
 File No. \_\_\_\_\_ Drawing No. \_\_\_\_\_  
 Date Dec. 3, 1937 Scale 1" = 1320'

STATE OF WEST VIRGINIA  
 DEPARTMENT OF MINES  
 OIL AND GAS DIVISION  
 CHARLESTON

**WELL LOCATION MAP**  
 FILE NO. Jyl-155-A

+ Denotes location of well on United States Topographic Maps, scale 1 to 62,500, latitude and longitude lines being represented by border lines as shown.

- Denotes one inch spaces on border line of original tracing.

F.B. 518 P. 17-18-19

WEST VIRGINIA DEPARTMENT OF MINES  
OIL AND GAS DIVISION

265

WELL RECORD

Permit No. TYL-164-A

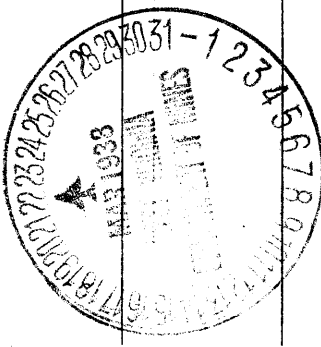
Oil or Gas Well Oil  
(Kind)

Company Hope Construction & Refining Company  
 Address Clarksburg, W. Va.  
 Farm Keener Heirs Acres 317  
 Location (waters) Ohio River  
 Well No. 2265 Elev. 997  
 District Union County Tyler  
 The surface of tract is owned in fee by \_\_\_\_\_  
 Address \_\_\_\_\_  
 Mineral rights are owned by \_\_\_\_\_  
 Address \_\_\_\_\_  
 Drilling commenced 7-24-1895  
 Drilling completed 10-28-1895  
 Date shot 7-6-1905 Depth of shot In Injun  
 Open Flow /10ths Water in \_\_\_\_\_ Inch  
 /10ths Merc. in \_\_\_\_\_ Inch  
 Volume \_\_\_\_\_ Cu. Ft.  
 Rock Pressure \_\_\_\_\_ lbs. \_\_\_\_\_ hrs.  
 Oil \_\_\_\_\_ bbls., 1st 24 hrs.  
 Fresh water None recorded feet \_\_\_\_\_ feet  
 Salt water None recorded feet \_\_\_\_\_ feet

Casing and Tubing	Used in Drilling	Left in Well	Packers
Size			
16			Kind of Packer
13			
10	130	Pulled	Size of
8 1/4	980	980	
<del>6 5/8</del> 6 1/2"	1450	1450	Depth set
<del>5 5/16</del> 4-7/8"	1715	1715	
3			Perf. top
2	1795	1795	Perf. bottom
Liners Used			Perf. top
			Perf. bottom

CASING CEMENTED \_\_\_\_\_ SIZE \_\_\_\_\_ No. FT. \_\_\_\_\_ Date \_\_\_\_\_  
**Not cemented**  
 COAL WAS ENCOUNTERED AT 570 FEET 60 INCHES  
 \_\_\_\_\_ FEET \_\_\_\_\_ INCHES FEET \_\_\_\_\_ INCHES  
 \_\_\_\_\_ FEET \_\_\_\_\_ INCHES FEET \_\_\_\_\_ INCHES

Formation	Color	Hard or Soft	Top	Bottom	Oil Gas or Water	Depth Found	Remarks
Pittsburgh Coal			570	575			
Cow Run Sand			1020	1060			
First salt sand			1250	1360			
Big Lime			1670	1725			
Keener Sand			1751	1775			
Big Injun Sand			1775	1819	Oil	1775	
Total Depth			1819				





KEENER HEIRS NO. 30 WELL.

Gal. No. 605 (lib)

70389

Union District, Tyler County, W. Va.  
Carter Oil Co.  
Elevation, 1005' B.  
Oil well.  
Survey No. 36.

# 36 of MTW  
Co. Rpt.

7  
1

	Top.	Bottom.
Big Injun Sand (Keener oil)	1751	
Total depth		1819