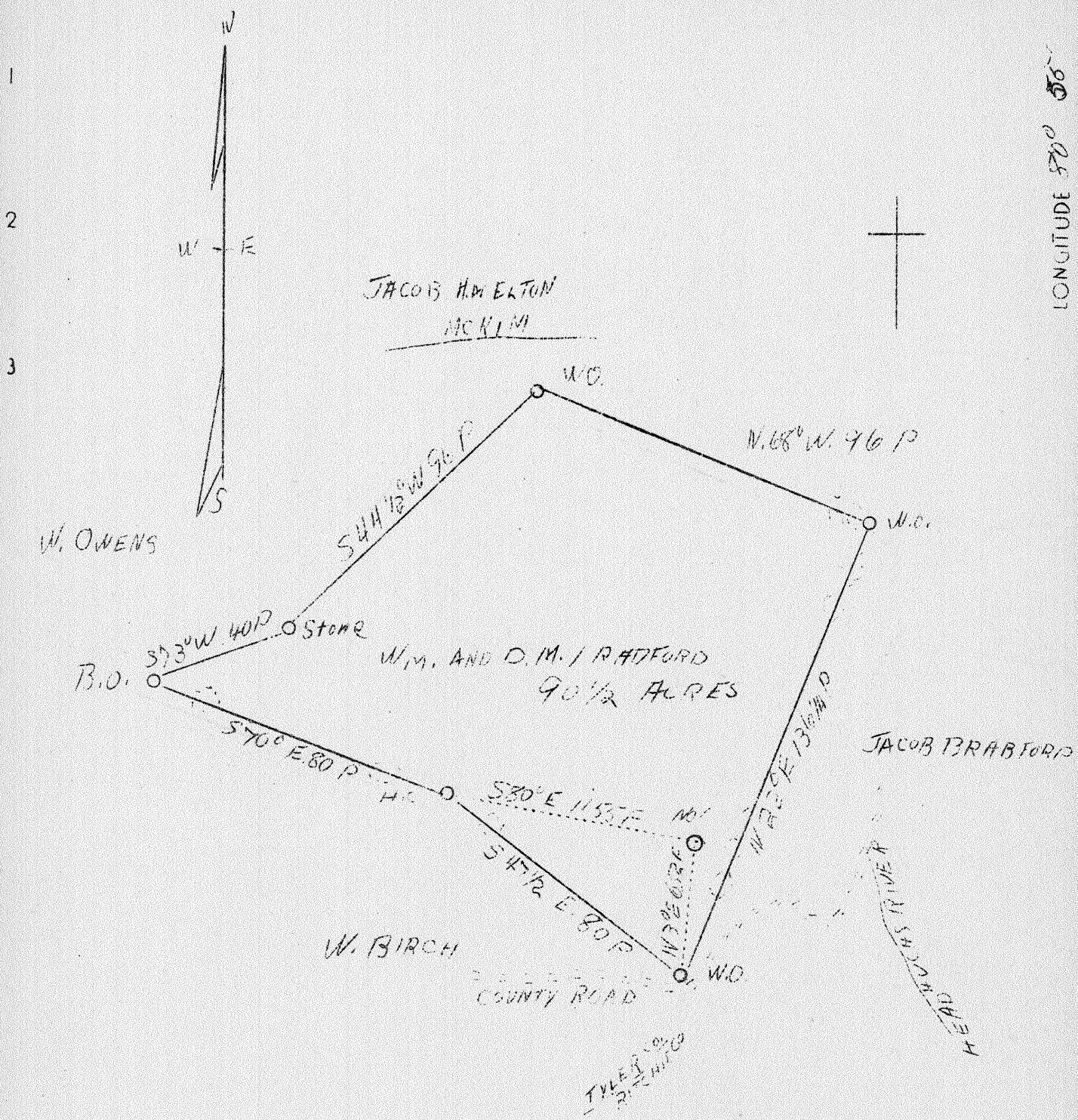


LATITUDE 39° 25'

LONGITUDE 80° 56'



1.25 1027 W  
 2.24 2027 R

H13D

MAY - 2 1938

Company	F.E.Pritchard
Address	Pennsboro, W.Va.
Farm	Wm. and D. M. Bradford
Tract 1 Acres	90 1/2
Lease No.	
Well (Farm) No.	1
Serial No.	
Elevation (Spirit Level)	1254
Quadrangle	West Union
County	Tyler
District	Meade
Engineer	J.V.Dunbar
Engineer's Registration No.	65
File No.	C-23-L
Drawing No.	
Date	April 25, 1938
Scale	1" = 40 Rods

STATE OF WEST VIRGINIA  
 Department of Mines  
 OIL AND GAS DIVISION  
 CHARLESTON

WELL LOCATION MAP

File No. TYL-166-A 166-A

Denotes location of well on United States Topographic Maps, scale 1 to 62,500, latitude and longitude lines being represented by border lines as shown.

Denotes one inch spaces on border line of original tracing.