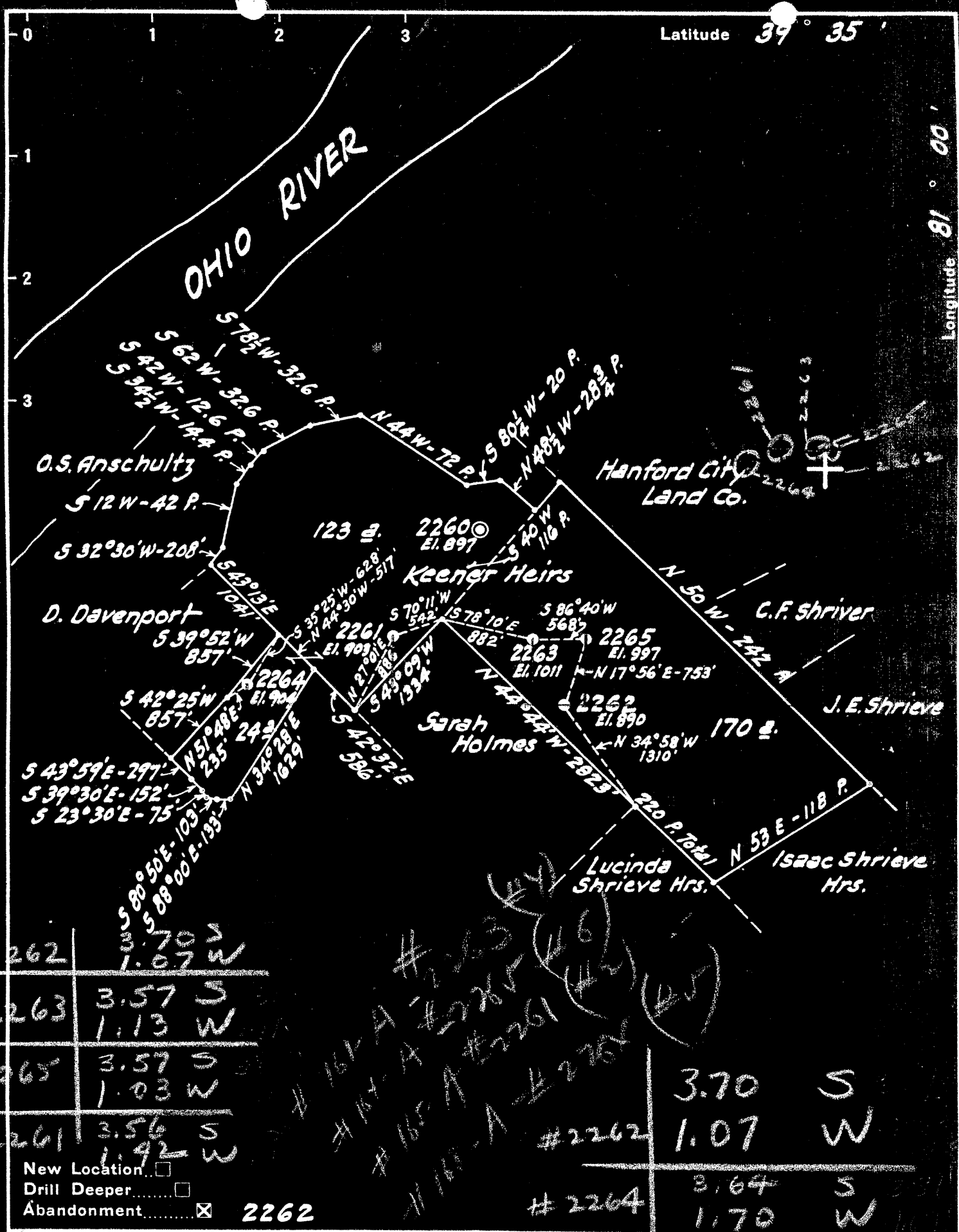


39105



#2262	1.07 W
#2263	3.57 S 1.13 W
#2265	3.57 S 1.03 W
#2261	3.56 S 1.42 W

*Handwritten notes:*  
 #161-A #2263  
 #157-A #2265  
 #165-A #2261  
 #161-A #2262  
 #165-A #2264

New Location   
 Drill Deeper   
 Abandonment  **2262**

#2262	3.70 S
#2262	1.07 W
#2264	3.64 S
#2264	1.70 W

Company Hope Constr. & Ref. Co.  
 Address Clarksburg, W. Va.  
 Farm Keener Heirs  
 Tract \_\_\_\_\_ Acres 317 Lease No. \_\_\_\_\_  
 Well (Farm) No. 2-3-4-5-6 Serial No. 2261-2262-2263  
 Elevation (Spirit Level) See Above  
 Quadrangle New Matamoras  
 County Tyler District Union SE  
 Engineer Delark  
 Engineer's Registration No. 744  
 File No. \_\_\_\_\_ Drawing No. \_\_\_\_\_  
 Date Dec. 3, 1937 Scale 1" = 1320'

STATE OF WEST VIRGINIA  
 DEPARTMENT OF MINES  
 OIL AND GAS DIVISION  
 CHARLESTON

**WELL LOCATION MAP**  
 FILE NO. Jyl-155-A

+ Denotes location of well on United States Topographic Maps, scale 1 to 62,500, latitude and longitude lines being represented by border lines as shown.

- Denotes one inch spaces on border line of original tracing.

F.B. 518 P. 17-18-19

WEST VIRGINIA DEPARTMENT OF MINES  
OIL AND GAS DIVISION

267

WELL RECORD

Permit No. TYL-168A

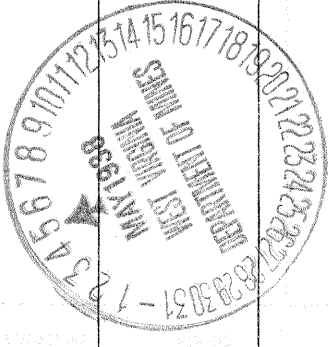
Oil or Gas Well oil  
(Kind)

Company Hope Construction & Refining Company  
 Address Clarksburg, W. Va.  
 Farm Keener Heirs Acres 51.7  
 Location (waters) Ohio River  
 Well No. 2264 Elev. 904  
 District Union County Tyler  
 The surface of tract is owned in fee by \_\_\_\_\_  
 Address \_\_\_\_\_  
 Mineral rights are owned by \_\_\_\_\_  
 Address \_\_\_\_\_  
 Drilling commenced ?  
 Drilling completed 12-26-1894  
 Date shot Last-6-26-1925 Depth of shot In Injun  
 Open Flow /10ths Water in \_\_\_\_\_ Inch  
 /10ths Merc. in \_\_\_\_\_ Inch  
 Volume \_\_\_\_\_ Cu. Ft.  
 Rock Pressure \_\_\_\_\_ lbs. \_\_\_\_\_ hrs.  
 Oil \_\_\_\_\_ bbls., 1st 24 hrs.  
 Fresh water None recorded feet \_\_\_\_\_ feet  
 Salt water None recorded feet \_\_\_\_\_ feet

Casing and Tubing	Used in Drilling	Left in Well	Packers
Size			
16			Kind of Packer
13			
10			Size of
8 1/4			
6 5/8 <del>6 1/2</del>	1220	1220	Depth set
5 3/16			
3 1/2 <del>7/8</del>	504	504	Perf. top
2	1735	1735	Perf. bottom
Liners Used			Perf. top
			Perf. bottom

CASING CEMENTED \_\_\_\_\_ SIZE \_\_\_\_\_ No. FT. \_\_\_\_\_ Date \_\_\_\_\_  
Not cemented  
 COAL WAS ENCOUNTERED AT 477 FEET 60 INCHES  
 \_\_\_\_\_ FEET \_\_\_\_\_ INCHES \_\_\_\_\_ FEET \_\_\_\_\_ INCHES  
 \_\_\_\_\_ FEET \_\_\_\_\_ INCHES \_\_\_\_\_ FEET \_\_\_\_\_ INCHES

Formation	Color	Hard or Soft	Top	Bottom	Oil Gas or Water	Depth Found	Remarks
Pittsburgh Coal		(Calculated)	477	482			
Cow Run Sand		(Calculated)	927	967			
Salt Sand		(Calculated)	1157	1267			
Big Lime		(Calculated)	1577	1622			
Keener Sand		(Calculated)	1622	1680			
Big Injun Sand			1680	1716	Oil	1680	
Total Depth				1735			



(Over)

MAY 27 1938

