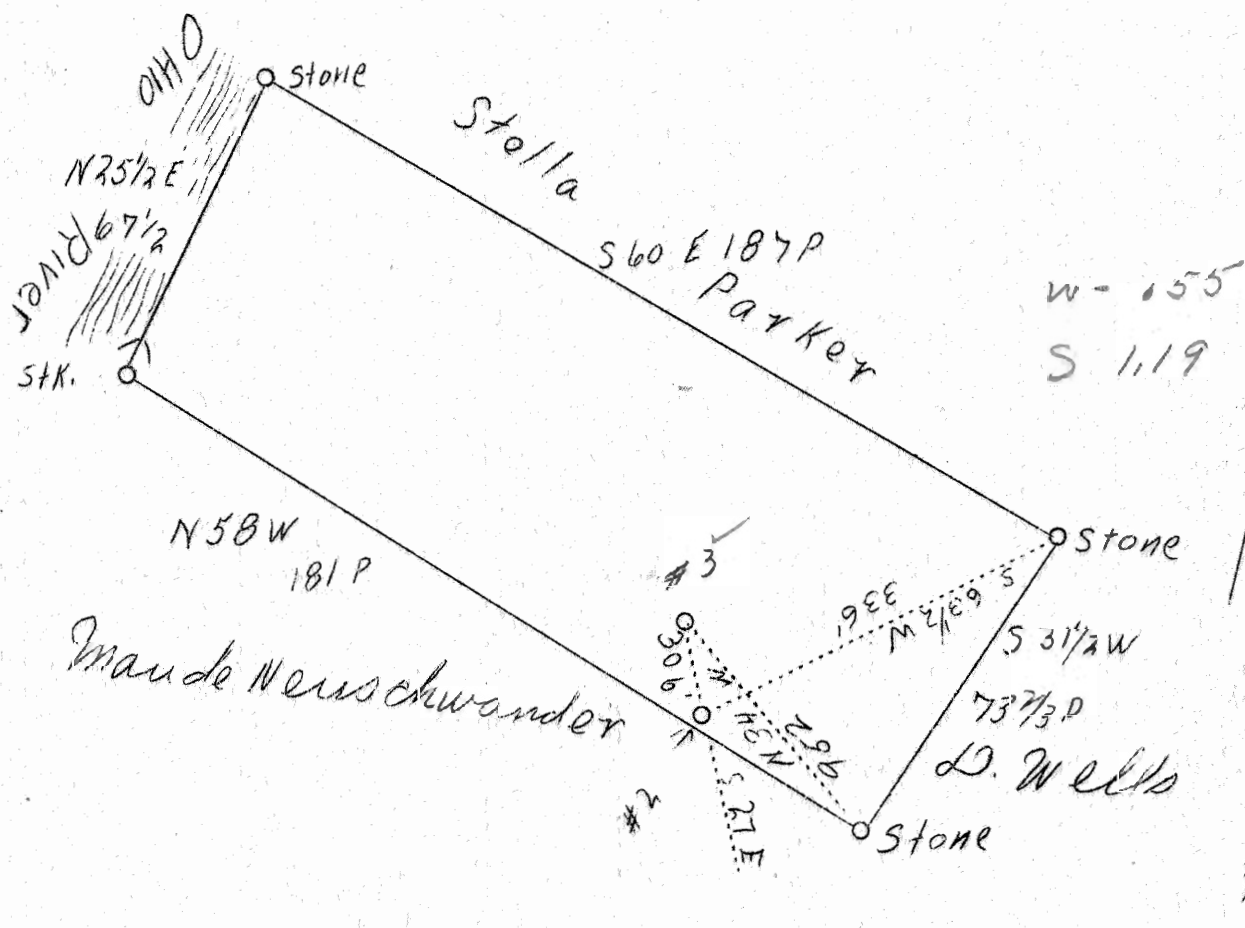


LATITUDE 39° 30'

LONGITUDE 81° 05'



ABD. #243

Company C.R. Mitchell  
 Address Toronto, Ohio Route 2 Box 21  
 Farm J.D. Holmes  
 Tract 1  
 Acres 48  
 Well (Farm) No. 3  
 Elev. (Spirit Level) 6:25'  
 Quadrangle St. Marys N.C.  
 County Tyler  
 District Union  
 Eng. J.S. Haught  
 Eng. Reg. No. C.S.T.C.  
 Date 11/9/38  
 Scale 1" = 40 Rods

STATE OF WEST VIRGINIA  
 Department of Mines  
 OIL AND GAS DIVISION  
 Charleston

WELL LOCATION MAP

File No. 111-1904191-H

x Denotes location of well on U.S. Topographic maps, scale 1 to 62,500, latitude and longitude lines being represented by border lines as shown.

- Denotes one inch spaces on border line of original tracing.