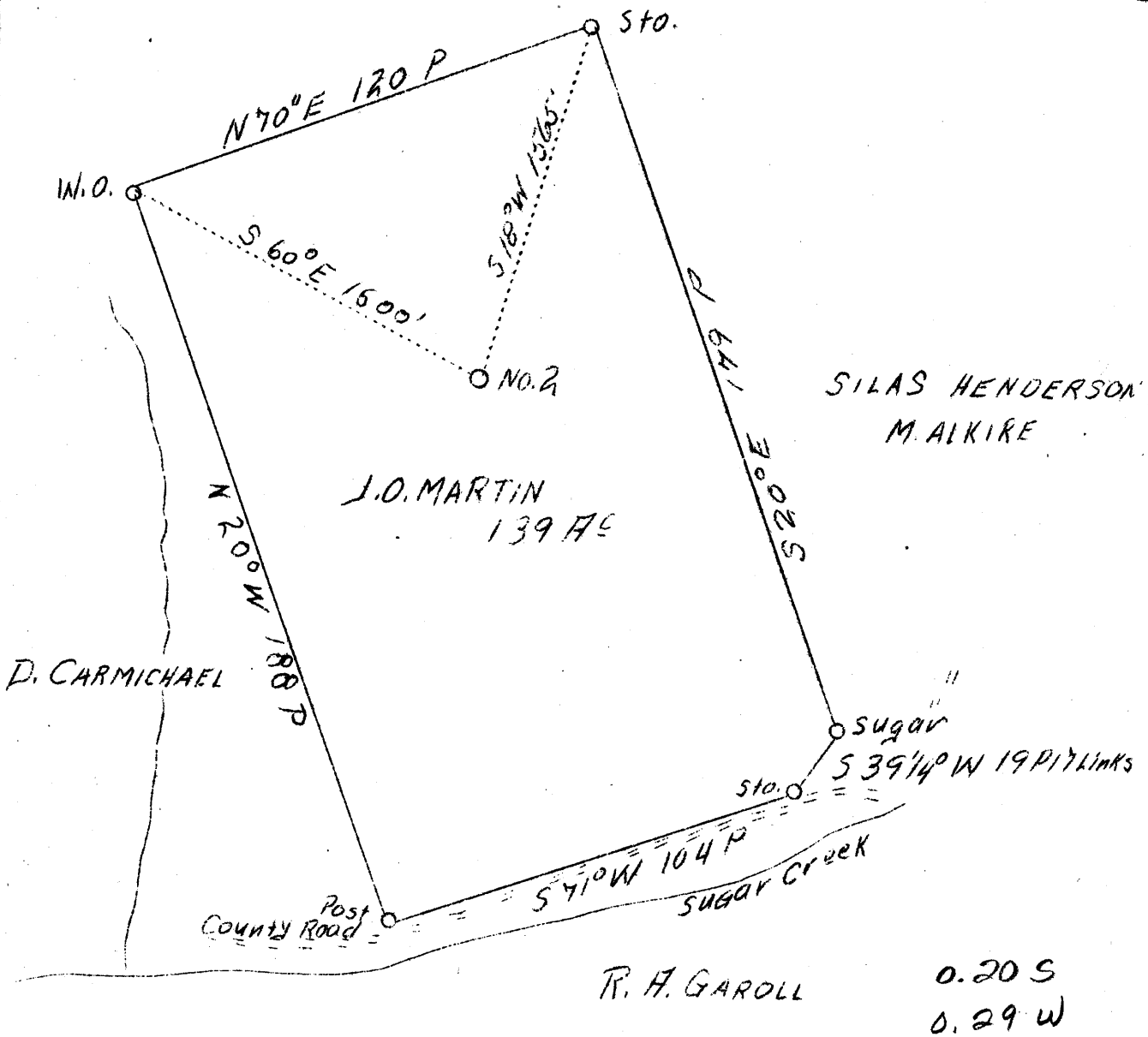


LATITUDE 39°25'

LONGITUDE 81°00'

SHERDAN & JOHN WELLS



ABD.

Company Casto Oil Co.
 Address Charleston, W. Va.
 Farm J. O. Martin
 Tract 10
 Acres 139
 Well (Farm) No. 2
 El. (S. L.) 840
 Quadrangle St. Mary's EC.
 County Tyler
 District Meado
 Eng. J. V. Dunbar
 Eng. Reg. No. 65
 File No. C - 23 - L
 Date 4/16/39
 Scale 1" = 40 Rds.

STATE OF WEST VIRGINIA
 Department of Mines
 OIL AND GAS DIVISION
 Charleston

WELL LOCATION MAP
 File No. TVI-704-A

x Denotes location of well on U.S. Topographic Maps, scale 1 to 62,500, latitude and longitude lines being represented by border lines as shown.
 - Denotes one inch spaces on border line of original tracing.