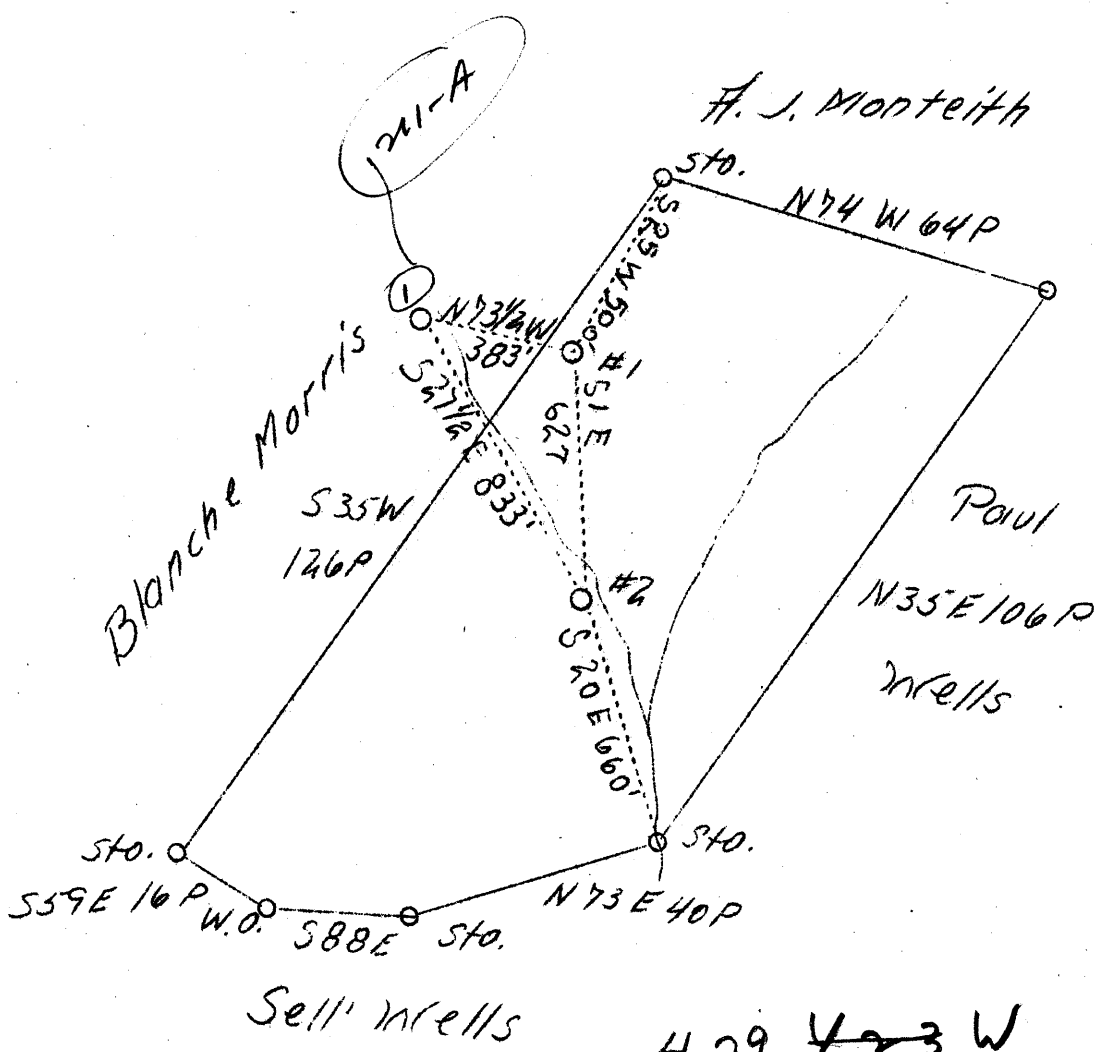


LATITUDE 39° 30'

LONGITUDE 81° 00'

+
0680'



4.29 ~~4.23~~ W
 1.76 ~~1.79~~ Q

SEP 12 1939

H.B.D.

Company	Warden & Fulmer
Address	New Matamoris Ohio
Farm	Mercy P. Wells
Tract	1
Acres	45
El.(S.L.)	883.82
Quadrangle	St. Marys
County	Tyler
District	Union
Eng.	J.S. Haught
Date	8/18/39
Scale	1" - 30 Rods

NE

STATE OF WEST VIRGINIA
 Department of Mines
 OIL AND GAS DIVISION
 Charleston

WELL LOCATION MAP

File No. TYL-212-A

x Denotes location of well on U.S. Topographic Maps, scale 1 to 62,500, latitude and longitude lines being represented by border lines as shown.

- Denotes one inch spaces on border line of original tracing.

(any map)

STATE OF WEST VIRGINIA
DEPARTMENT OF MINES
OIL AND GAS DIVISION

296

WELL RECORD

Permit No. *212-A*

Oil or Gas Well. *Oil*
(Kind)

Company <i>Harden and Gulmer</i>	Casing and Tubing	Used in Drilling	Left in Well	Packers
Address <i>New Matamoras, Ohio</i>	Size			
Farm <i>Mercy P. Wells</i> Acres <i>45</i>	16			
Location (waters)	13			
Well No. <i>1</i> Elev. <i>883.82</i>	8 1/4	<i>810</i>		Kind of Packer
District <i>Union</i> County <i>Tyler</i>	6 5/8	<i>1207</i>	<i>1207</i>	Size of <i>None</i>
The surface of tract is owned in fee by <i>Mrs. Blanche Morris</i>	5 3/16			Depth set <i>None</i>
Address <i>Harrisonville Mo.</i>	3			Perf. top
Mineral rights are owned by <i>Mrs. Blanche Morris</i>	2			Perf. bottom
Address <i>Harrisonville Mo.</i>	Liners Used			Perf. top
Drilling commenced <i>Oct 1915</i>				Perf. bottom
Drilling completed <i>Nov 1915</i>				
Date shot <i>Nov 1915</i> Depth of shot <i>1665-1671</i>				
Open Flow /10ths Water in _____ Inch				
/10ths Merc. in _____ Inch				
Volume <i>Estimated 100 Thousand</i> Cu. Ft.	CASING CEMENTED	SIZE	No. Ft.	Date
Rock Pressure <i>Not taken</i> lbs. _____ hrs.				
Oil <i>2</i> bbls., 1st 24 hrs.	COAL WAS ENCOUNTERED AT			
Fresh water _____ feet				
Salt water <i>Small amt.</i> feet <i>1665-1671</i> feet				

Formation	Color	Hard or Soft	Top	Bottom	Oil, Gas or Water	Depth Found	Remarks
<i>Cave</i>	<i>red</i>	<i>soft</i>	<i>555</i>	<i>655</i>			
<i>Cave</i>	<i>red</i>	<i>soft</i>	<i>715</i>	<i>745</i>			
<i>Cow Run</i>	<i>lime</i>	<i>hard</i>	<i>745</i>	<i>760</i>			<i>no good</i>
<i>Cave</i>	<i>red</i>	<i>soft</i>	<i>760</i>	<i>810</i>			
<i>Third belt</i>		<i>hard</i>	<i>1227</i>	<i>1335</i>			
<i>Macon</i>	<i>gray</i>	<i>soft</i>	<i>1468</i>	<i>1488</i>	<i>gas</i>	<i>1470-1475</i>	<i>No test Estimated 100 thousand</i>
<i>Big lime</i>	<i>gray</i>	<i>hard</i>	<i>1505</i>	<i>1610</i>			
<i>Keener</i>		<i>soft</i>	<i>1610</i>	<i>1642</i>			
<i>Slate</i>	<i>dark</i>	<i>soft</i>	<i>1642</i>	<i>1662</i>			
<i>Big Injin</i>			<i>1662</i>	<i>1690</i>	<i>Oil</i>	<i>1665-1671</i>	
<i>Total depth</i>				<i>1690</i>			

