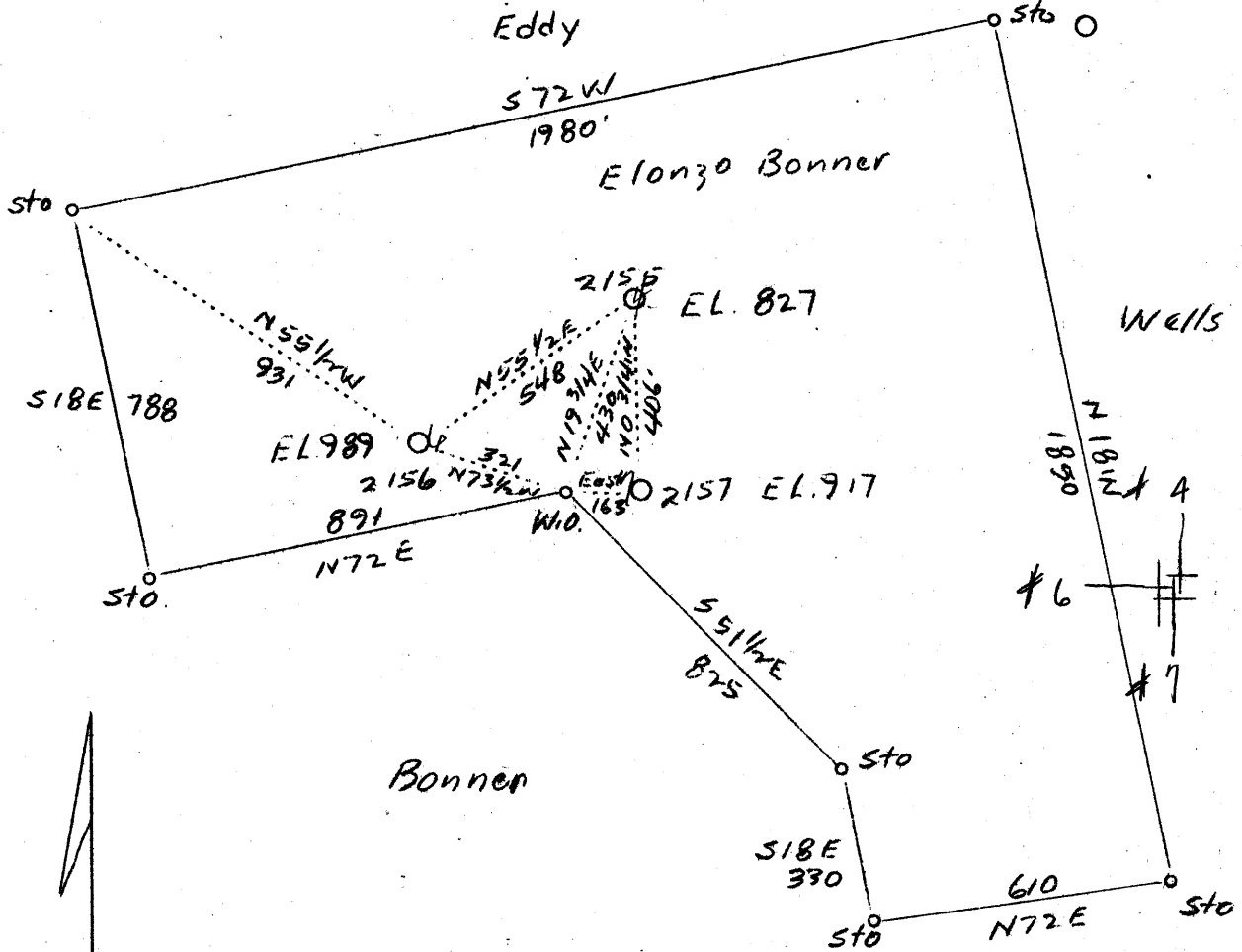


LATITUDE 39° 30'

LONGITUDE 81° 00'



# 4 { W - .7  
S - 5.54

Haught

# 6 { W. 72 0.82  
S - 5.16 # 7 { W. .75  
S - 5.169

Company F. S. Deem  
 Address Harrisville, W. Va.  
 Farm Elonzo Bonner  
 Acres 55  
 Well (Farm) No. 4, 6 and 7  
 Serial No. 2155-56-57  
 Elevation (SL) 827, 989 and 917  
 Quadrangle St. Marys NE.  
 County Tyler  
 District Meade  
 Engineer B. F. Rinehart  
 Eng. Reg. No. 648  
 Drawing No. 205-M-T  
 Date Sept. 25, 1939  
 Scale 1" = 400'

STATE OF WEST VIRGINIA  
 Department of Mines  
 OIL & GAS DIVISION  
 Charleston

WELL LOCATION MAP

File No. TYL-222A 223A 224A

x Denotes location of well on U. S. Topographic Maps, scale 1 to 62,500, latitude and longitude lines being represented by border lines as shown.

\* Denotes one inch spaces on border line of original tracing.

Meade District, Tyler County, W. Va.  
Hope Cons. & Ref. Co.  
Elevation, 815'.  
Oil well.  
On Sugar Creek.  
Shown on 9-C, St. Marys Quadrangle.