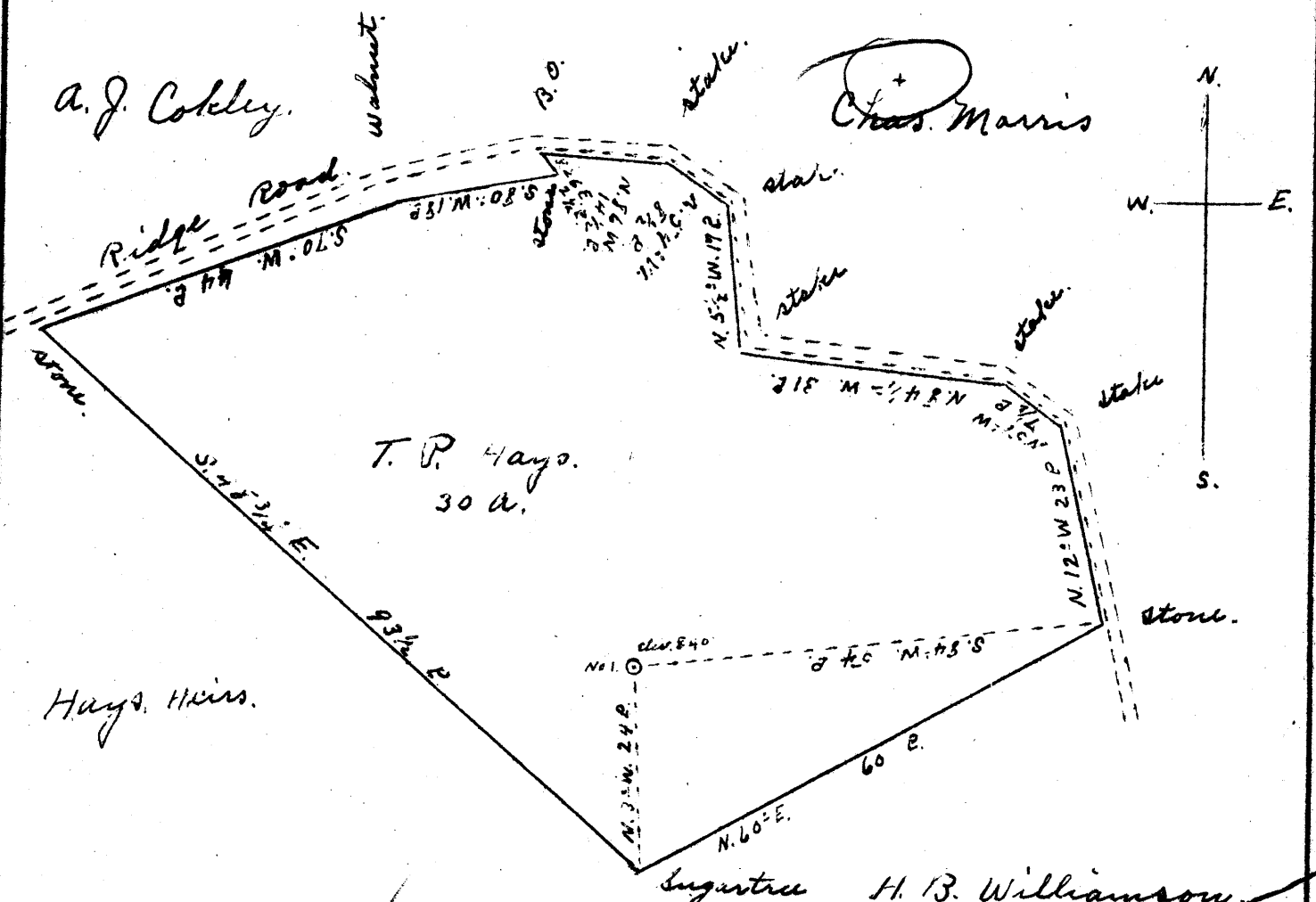


Latitude 39° 35'

Longitude 81° 00'



New Location   
 Drill Deeper   
 Abandonment

2.43 W  
 2.48 S

Company Little Flower Oil Co.  
 Address Listerville, W.Va.  
 Farm T.P. Hays (A.L. ANDERSON)  
 Tract \_\_\_\_\_ Acres 30 Lease No. \_\_\_\_\_  
 Well (Farm) No. 1 Serial No. \_\_\_\_\_  
 Elevation (Spirit Level) 840'  
 Quadrangle New Matamoras SE  
 County Tyler District Union  
 Engineer Jno Triplett  
 Engineer's Registration No. \_\_\_\_\_  
 File No. \_\_\_\_\_ Drawing No. \_\_\_\_\_  
 Date Jan. 23, 1941 Scale 20 P = 1"

STATE OF WEST VIRGINIA  
 DEPARTMENT OF MINES  
 OIL AND GAS DIVISION  
 CHARLESTON

WELL LOCATION MAP  
 FILE NO. TYL-285A

+ Denotes location of well on United States Topographic Maps, scale 1 to 62,500, latitude and longitude lines being represented by border lines as shown.

- Denotes one inch spaces on border line of original tracing.