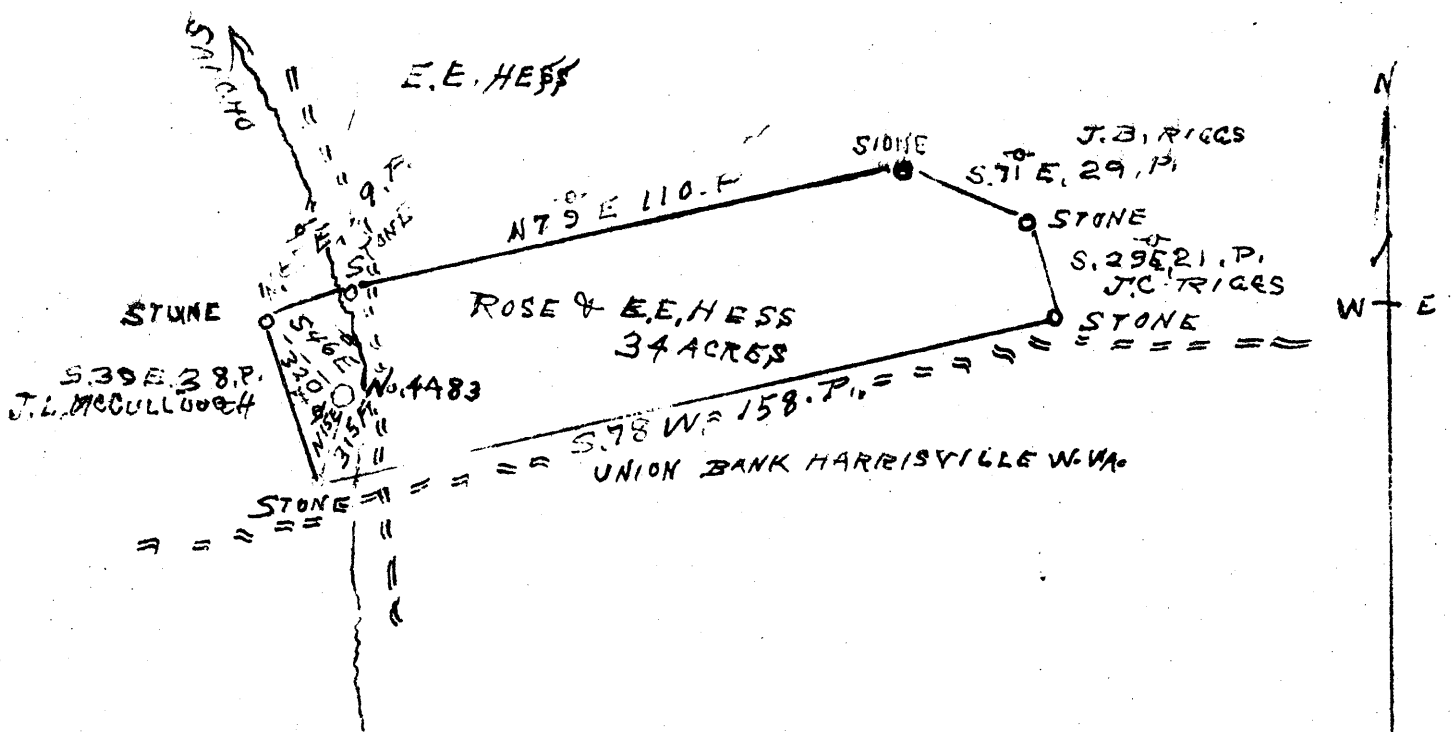


Latitude 39 25

Longitude 80 50

(+) 4.06 W
2.02 S



2.02 S
4.1 W

New Location
 Drill Deeper
 Abandonment

SURVEYED AND PLATTED BY ROBERT CHALANT, PIKE, W. VA.

Company JONES WOODYARD
 Address MOLE HILL WVA
 Farm ROSE & E.E. HESS
 Tract _____ Acres 34 Lease No. _____
 Well (Farm) No. 4438 Serial No. _____
 Elevation (Spirit Level) 871.5
 Quadrangle WEST UNION W-
 County TYLER District CENTERVILLE
 Engineer J. J. Dunbar
 Engineer's Registration No. 65
 File No. C-23-L Drawing No. _____
 Date Dec 24 1941 Scale 1 Inch = 40 P.

STATE OF WEST VIRGINIA
 DEPARTMENT OF MINES
 OIL AND GAS DIVISION
 CHARLESTON

WELL LOCATION MAP
 FILE NO. Tyl-300-A

+ Denotes location of well on United States Topographic Maps, scale 1 to 62,500, latitude and longitude lines being represented by border lines as shown.

- Denotes one inch spaces on border line of original tracing.

E. W. McCULLOUGH (ROSE HESS) NO. 4483 WELL.
Gal. No. 375 (352)

Centerville District, Tyler County, W. Va.
Philadelphia Co.
Elevation, 835'.
Gas well.
Completed in 1916.
Original rock pressure, 195 lbs., in 12 min.
2 mi. S. from Bearsville, on Sancho Creek.

| | Top. | Bottom. |
|--|------|---------|
| Pittsburgh Coal | 527 | |
| Big Lime | 1710 | - 1807 |
| Big Injan Sand (gas, 1807' and 1826-27') | 1807 | |
| Total depth | | 1837 |

TYL-300-A ?