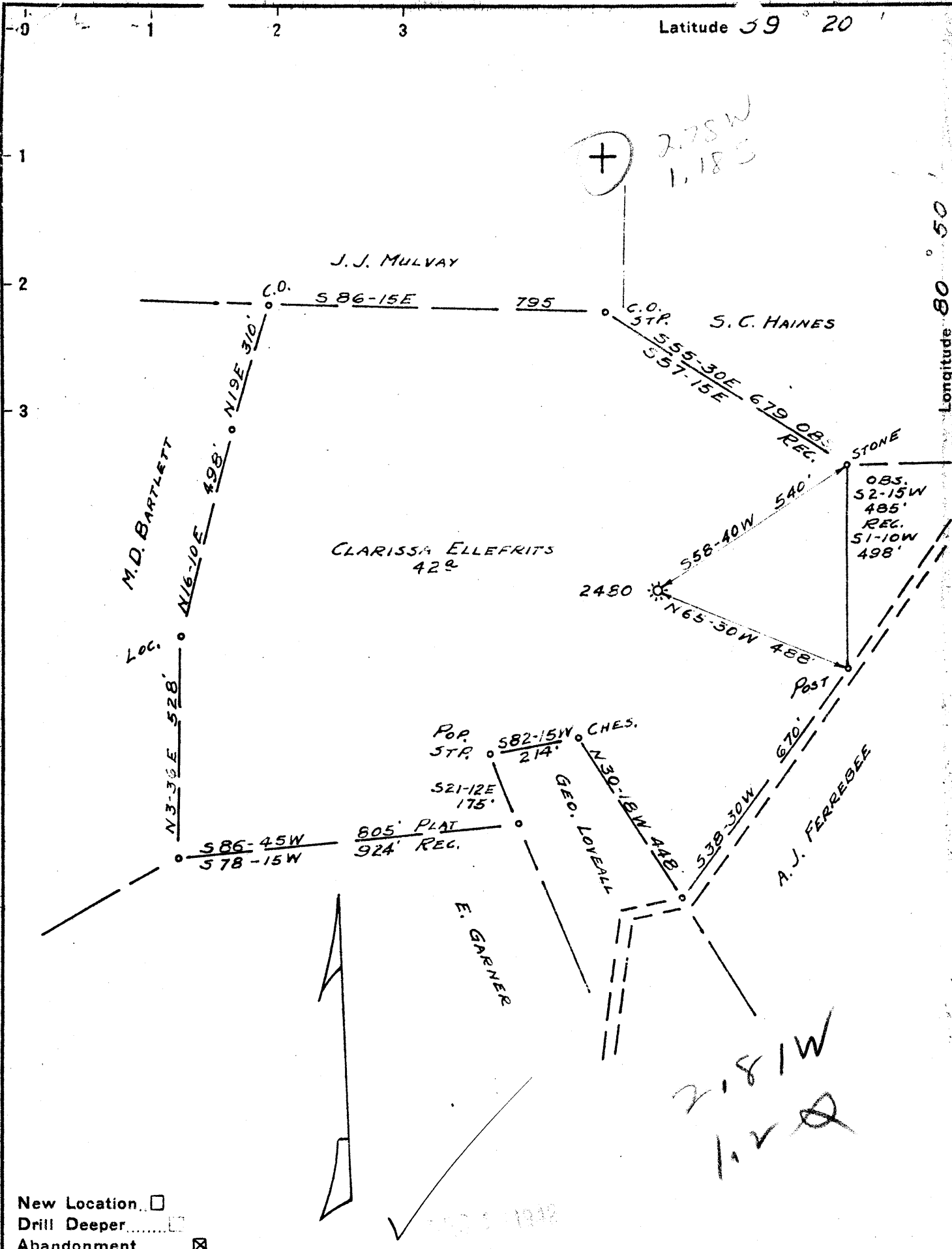


Latitude 39 20

Longitude 80 50



New Location   
 Drill Deeper   
 Abandonment

Company PITTSBURGH & W. VA. GAS CO.  
 Address CLARKSBURG, W. VA.  
 Farm CLARISSA ELLEFRITS  
 Tract \_\_\_\_\_ Acres 42 Lease No. 5590  
 Well (Farm) No. ONE Serial No. 2480  
 Elevation (Spirit Level) 1133 V.A.  
 Quadrangle WEST UNION S.W. 24  
 County TYLER District CENTERVILLE  
 Engineer Paul W. Cunningham  
 Engineer's Registration No. \_\_\_\_\_  
 File No. V-111-P.141 Drawing No. \_\_\_\_\_  
 Date 12-3-42 Scale 1"=300'

STATE OF WEST VIRGINIA  
 DEPARTMENT OF MINES  
 OIL AND GAS DIVISION  
 CHARLESTON

WELL LOCATION MAP  
 FILE NO. JYL-332-A

+ Denotes location of well on United States Topographic Maps, scale 1 to 62,500, latitude and longitude lines being represented by border lines as shown.

- Denotes one inch spaces on border line of original tracing.

"IMPERIAL" TRACING CLOTH  
 K & E CO., N. Y.

STATE OF WEST VIRGINIA  
DEPARTMENT OF MINES  
OIL AND GAS DIVISION

345

WELL RECORD

Permit No. 33711

Oil or Gas Well. Gas  
(Kind)

Company: Pittsburgh & West Va Gas Company.  
Address: Clarksburg, West Va.  
Farm: Clarissa Ellefritts Acres 42  
Location (waters): West Union N.W. 2-4  
Well No. 2480 Elev. 1133' VA  
District: Centerville County: Tyler  
The surface of tract is owned in fee by: Mary F. Ellefritts  
R.F.D.#1 Address: Central Sta., W.Va.  
Mineral rights are owned by: Mary F. Ellefritts et al.  
R.F.D.#1 Address: Central Sta., W.Va.  
Drilling commenced: November 10th, 1911  
Drilling completed: January 30th, 1912  
Date shot: Depth of shot:  
Open Flow /10ths Water in: Inch  
/10ths Merc. in: Inch  
Volume: Cu. Ft.  
Rock Pressure: lbs. hrs.  
Oil: bbls., 1st 24 hrs.  
Fresh water: 880 feet  
Salt water: 1225 & 1520' feet

| Casing and Tubing | Used in Drilling | Left in Well | Packers        |
|-------------------|------------------|--------------|----------------|
| Size              |                  |              |                |
| 16.               |                  |              | Kind of Packer |
| 13.               |                  |              |                |
| 10.               | 660'             | Pulled.      | Size of        |
|                   | 1125'            | 1125'        |                |
|                   | 1986'            | 1986'        | Depth set      |
| 6 3/16.           |                  |              |                |
| 3.                |                  |              | Perf. top      |
| 2.                |                  |              | Perf. bottom   |
| Liners Used       |                  |              | Perf. top      |
|                   |                  |              | Perf. bottom   |

CASING CEMENTED: SIZE: No. Ft. Date  
COAL WAS ENCOUNTERED AT: FEET INCHES  
FEET INCHES FEET INCHES  
FEET INCHES FEET INCHES

| Formation | Color | Hard or Soft | Top  | Bottom | Oil, Gas or Water | Depth Found | Remarks |
|-----------|-------|--------------|------|--------|-------------------|-------------|---------|
| Red Rock  | Red   | Soft         | 0    | 25     |                   |             |         |
| Sand      | White | Hard         | 25   | 50     |                   |             |         |
| Line      | "     | "            | 50   | 100    |                   |             |         |
| Slate     |       | Soft         | 100  | 150    |                   |             |         |
| Line      | Blue  | Hard         | 150  | 200    |                   |             |         |
| Red Rock  | Red   | "            | 200  | 250    |                   |             |         |
| Slate     | Blue  | Soft         | 250  | 300    |                   |             |         |
| Line      | White | Hard         | 300  | 350    |                   |             |         |
| Red Rock  | Red   | Soft         | 350  | 375    |                   |             |         |
| Slate     | Blue  | "            | 375  | 425    |                   |             |         |
| Line      | Dark  | "            | 425  | 475    |                   |             |         |
| Red Rock  | Red   | "            | 475  | 500    |                   |             |         |
| Slate     | Blue  | "            | 500  | 530    |                   |             |         |
| Sand      | White | Hard         | 530  | 565    |                   |             |         |
| Red Rock  | Red   | Soft         | 565  | 590    |                   |             |         |
| Sand      | White | Hard         | 590  | 600    |                   |             |         |
| Slate     | Blue  | Soft         | 600  | 640    | Water             | 640'        |         |
| Line      |       | Hard         | 640  | 645    |                   |             |         |
| Slate     | Blue  | Soft         | 645  | 660    |                   |             |         |
| Line      | Red   | Hard         | 660  | 675    |                   |             |         |
| "         | Blue  | "            | 675  | 685    |                   |             |         |
| "         | "     | "            | 685  | 725    |                   |             |         |
| Slate     | Black | Soft         | 725  | 735    |                   |             |         |
| Line      | Dark  | Hard         | 735  | 738    |                   |             |         |
| "         | "     | "            | 738  | 750    |                   |             |         |
| Slate     | Blue  | Soft         | 750  | 770    |                   |             |         |
| Line      | White | "            | 770  | 810    |                   |             |         |
| Slate     | Light | Soft         | 810  | 820    |                   |             |         |
| Line      | "     | Hard         | 820  | 830    |                   |             |         |
| Red Rock  | Red   | Soft         | 830  | 845    |                   |             |         |
| Line      | "     | "            | 845  | 865    |                   |             |         |
| Red Rock  | "     | "            | 865  | 885    |                   |             |         |
| Sand      | White | Hard         | 885  | 918    |                   |             |         |
| Line      | Brown | "            | 918  | 940    |                   |             |         |
| "         | Blue  | "            | 940  | 954    |                   |             |         |
| "         | Dark  | "            | 954  | 965    |                   |             |         |
| Slate     | Brown | Soft         | 965  | 980    |                   |             |         |
| Line      | Black | "            | 980  | 1015   |                   |             |         |
| Red Rock  | Red   | "            | 1015 | 1050   |                   |             |         |
| Shale     | Brown | "            | 1050 | 1125   |                   |             |         |
| Line      | White | Hard         | 1125 | 1200   |                   |             |         |
| Sand      | "     | "            | 1200 | 1250   | Water             | 1225'       |         |

| Formation      | Color | Hard or Soft | Top  | Bottom | Oil, Gas or Water | Depth Found | Remarks |
|----------------|-------|--------------|------|--------|-------------------|-------------|---------|
| Line           | Blue  | Hard         | 1250 | 1275   |                   |             |         |
| Slate          | White | "            | 1275 | 1300   |                   |             |         |
| Sand           | "     | "            | 1300 | 1350   |                   |             |         |
| Slate          | "     | Soft         | 1350 | 1375   |                   |             |         |
| Sand           | "     | Hard         | 1375 | 1410   |                   |             |         |
| Slate          | "     | Soft         | 1410 | 1435   |                   |             |         |
| Sand           | "     | Hard         | 1435 | 1485   |                   |             |         |
| Slate          | Dark  | Soft         | 1485 | 1500   |                   |             |         |
| Sand           | "     | Hard         | 1500 | 1620   | Water             | 1520'       |         |
| Slate          | Blue  | Soft         | 1620 | 1655   |                   |             |         |
| Line           | Black | Hard         | 1655 | 1700   |                   |             |         |
| Slate          | "     | Soft         | 1700 | 1725   |                   |             |         |
| Sand           | White | Hard         | 1725 | 1810   |                   |             |         |
| Slate          | Black | Soft         | 1810 | 1830   |                   |             |         |
| Maxon Sand     | White | Hard         | 1830 | 1915   | Gas               | 1895'       |         |
| Slate          | Dark  | Soft         | 1915 | 1925   |                   |             |         |
| Little Line    | White | Hard         | 1925 | 1945   |                   |             |         |
| Pencil Cave    | Dark  | Soft         | 1945 | 1955   |                   |             |         |
| Big Line       | White | Hard         | 1955 | 2045   |                   |             |         |
| Big Injun      | "     | "            | 2045 | 2140   | Gas               | 2120'       |         |
| Slate          | Dark  | Soft         | 2140 | 2200   |                   |             |         |
| Slate&Shells   |       |              | 2200 | 2300   |                   |             |         |
| Sand           | Dark  | Hard         | 2300 | 2465   |                   |             |         |
| Slate & Shells |       | Hard&Soft    | 2465 | 2748   |                   |             |         |
| Gordon Sand    | White | Soft         | 2748 | 2751   | Gas               | 2750'       |         |
| Slate          | "     | "            | 2751 | 2803   |                   |             |         |
| Total Depth    | ----- |              |      | 2803'  |                   |             |         |

May 15th, 1940

Date....., 19

PITTSBURGH & WEST VA GAS CO.

APPROVED....., Owner

By *F. L. Bricker*  
 F. L. Bricker  
 (Title)