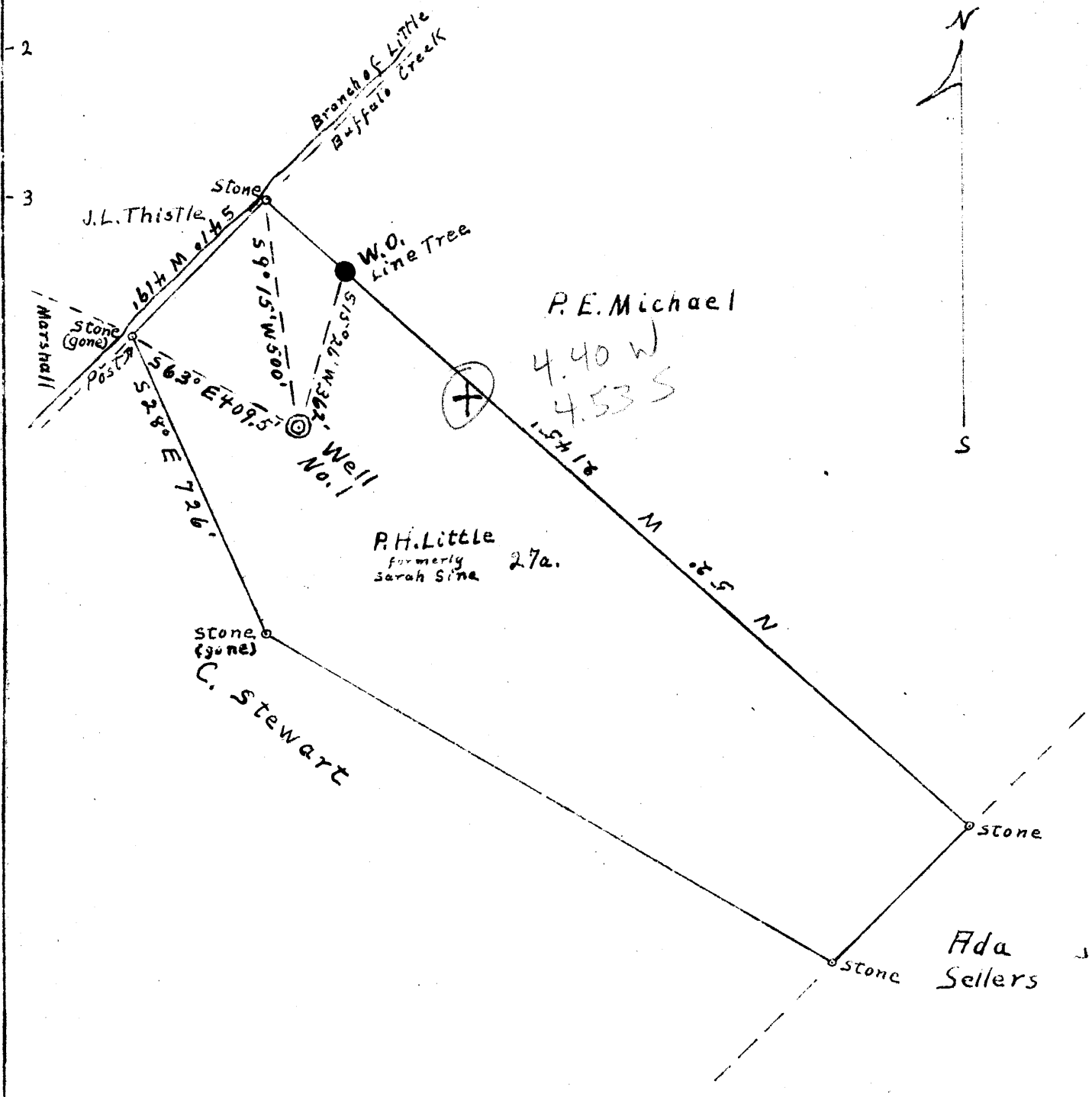


Latitude 39° 35'

Longitude 80° 55'



Abandonment

No Coal

Company Estelle Oil Company
 Address Sistersville, W. Va.
 Farm P.H. Little (Formerly Sarah Sine)
 Tract 1 Acres 27 Lease No. _____
 Well (Farm) No. 1 Serial No. _____
 Elevation (Spirit Level) 866.22'
 Quadrangle New Martinsville, W. Va.
 County Tyler District Union
 Engineer Don L. Rigale
 Engineer's Registration No. _____
 File No. A-E Drawing No. 819
 Date 9-23-43 Scale 1" = 330'

STATE OF WEST VIRGINIA
 DEPARTMENT OF MINES
 OIL AND GAS DIVISION
 CHARLESTON.

WELL LOCATION MAP
 FILE NO. JYL-351-A

+ Denotes location of well on United States Topographic Maps, scale 1 to 62,500, latitude and longitude lines being represented by border lines as shown.

- Denotes one inch spaces on border line of original tracing.