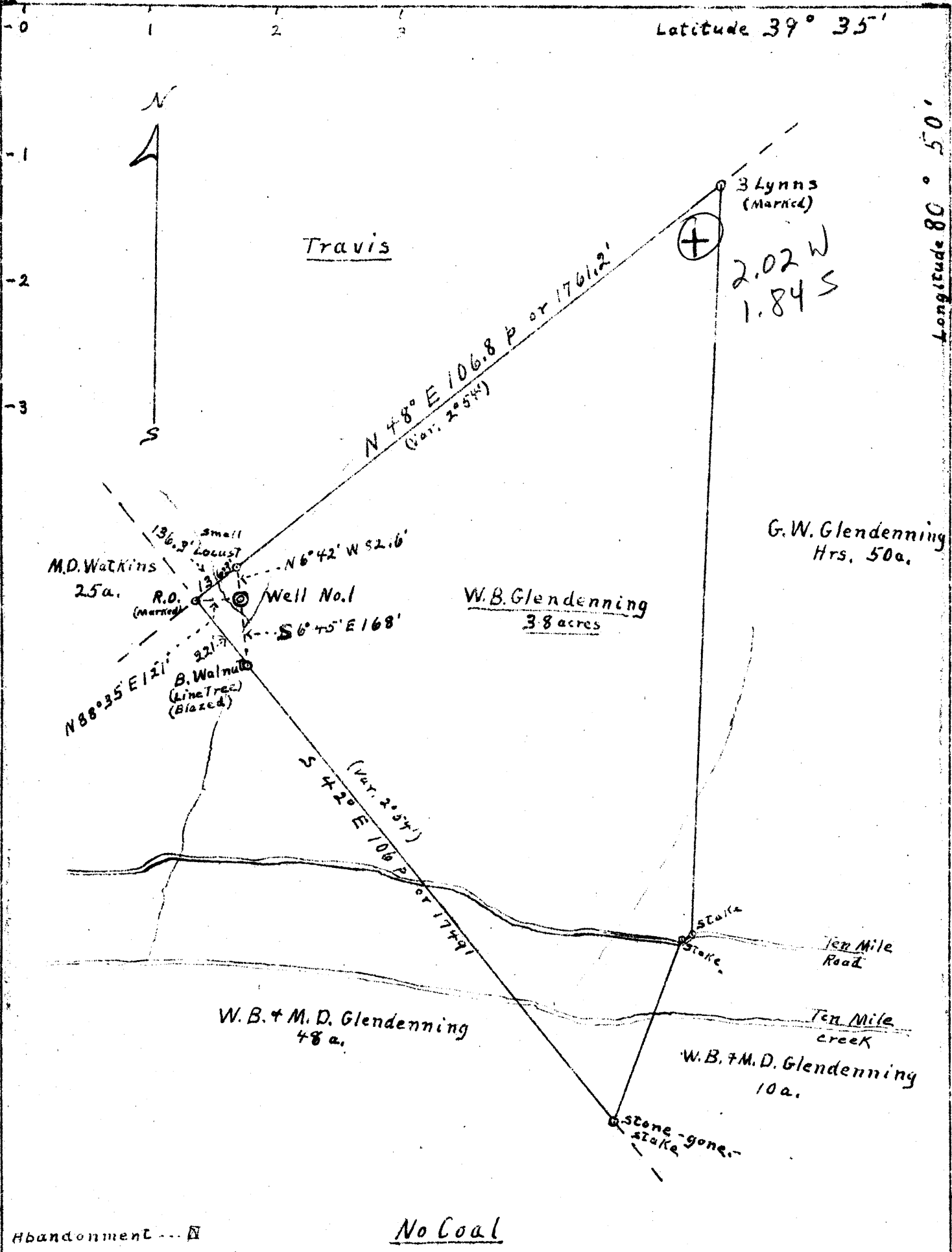


Latitude 39° 35'

Longitude 80° 50'



Company Pittsburgh Oil and Gas Co.
 Address 341 Oliver Bldg. Pittsburgh, Pa.
 Farm W. B. Glendenning
 Tract 1 Acres 38 Lease No. _____
 Well (Farm) No. 1 Serial No. _____
 Elevation (spirit level) 770.53'
 Quadrangle New Martinsville
 County Tyler District Ellsworth
 Engineer W. J. Wiggall
 Engineers Registration No. _____
 File No. F-P Drawing No. 818
 Date 4-21-43 Scale 1" = 330'

STATE OF WEST VIRGINIA
 DEPARTMENT OF MINES
 OIL AND GAS DIVISION
 CHARLESTON

WELL LOCATION MAP
 FILE NO. JYL-355-A

+ Denotes location of well on United States Topographic Maps, scale 1 to 62,500, latitude and longitude lines being represented by border lines as shown

- Denotes one inch spaces on border line of original tracing.