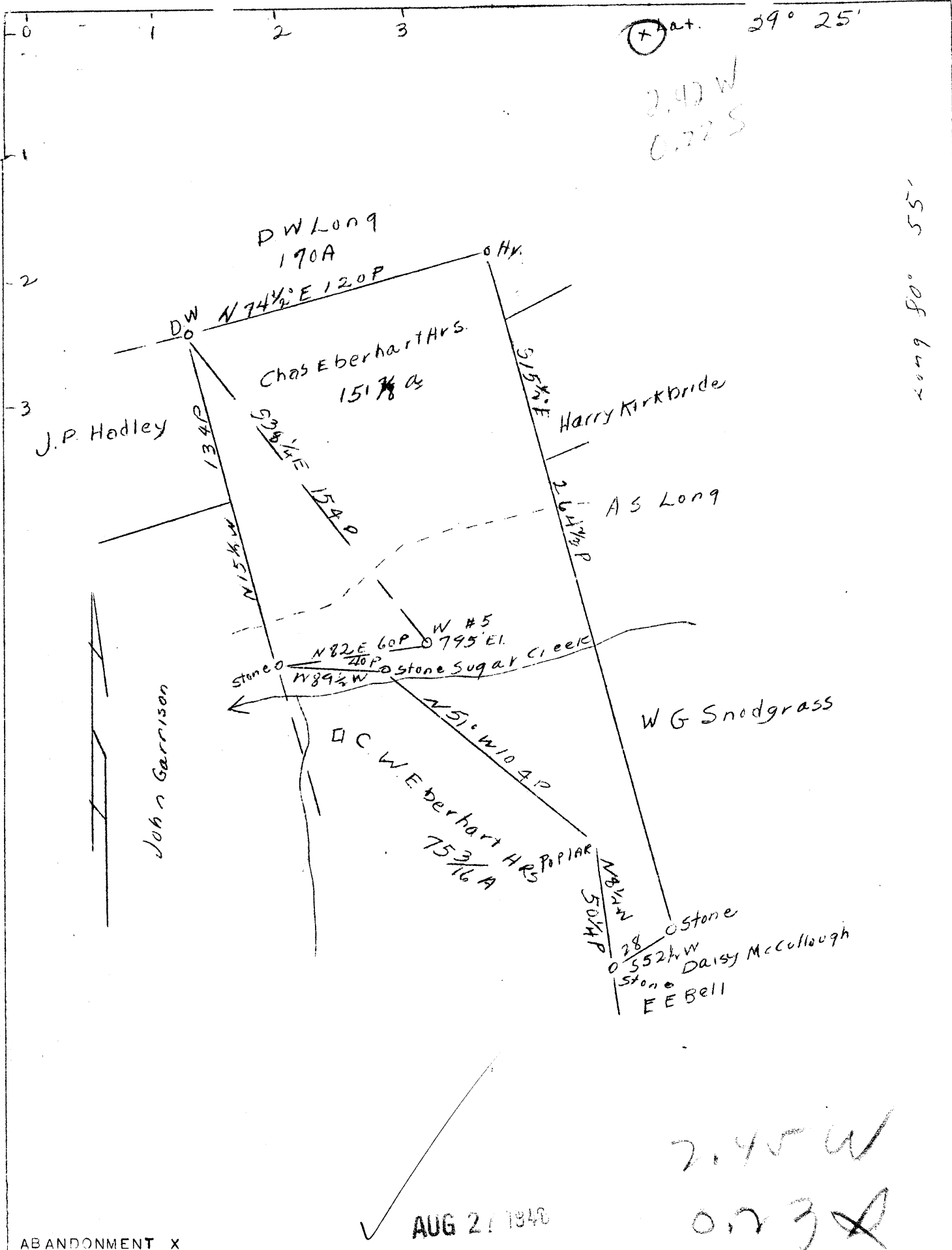


⊕ at. 29° 25'

2.42 W
0.72 S

Long 50° 55'



2.45 W
0.73 S

ABANDONMENT X

COMPANY	SMITH, PIERSOL, FEICK & COSS
ADDRESS	WALKER, RT. NO. 2, W. VA.
FARM	CHAS EBERHART, HRS.
TRACT	ACRES 151 7/8 LEASE NO.
WELL (FARM) NO.	5 SERIAL NO.
ELEVATION (S.L.)	795'
QUADRANGLE	WEST UNION
COUNTY	TYLER DISTRICT MEADE
ENGINEER	J. E. ANDERSON, WOOD COUNTY
ENGINEER'S REG. NO.	SURVEYOR
FILE NO.	DRAWING NO.
DATE	6/10/46 SCALE 1" = 50 POLES

STATE OF WEST VIRGINIA
 DEPARTMENT OF MINES
 OIL AND GAS DIVISION
 CHARLESTON
 WELL LOCATION MAP
 FILE NO. TYL-401A

+ DENOTES LOCATION OF WELL ON U.S. TOPOGRAPHIC MAPS. SCALE 1 TO 62,500 LATITUDE AND LONGITUDE LINES BEING REPRESENTED BY BORDER LINES AS SHOWN.
 - DENOTES ONE INCH SPACES ON BORDER LINE OF ORIGINAL TRACING.

CHAS. EBERHART HRS. NO. 5 - SMITH, PIERSOL, FEICK & COSS - TYL-401-A

STATE OF WEST VIRGINIA
DEPARTMENT OF MINES
OIL AND GAS DIVISION

388

WELL RECORD

Permit No. none

Oil or Gas Well (KIND)

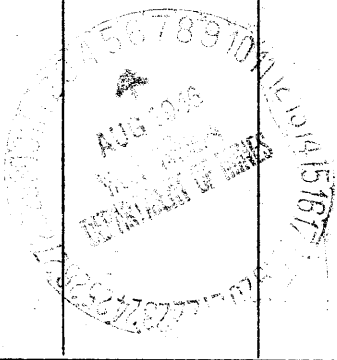
Company Smith, Pierson, Feick & Coss
 Address Walker Route No. 2, W. VA.
 Farm Charles Eberhart Acres 50
 Location (waters) Sugar Creek
 Well No. 5 Elev. 795
 District Meade County Tyler
 The surface of tract is owned in fee by Chas. W. Eberhart
 Address Parkersburg, W. VA.
 Mineral rights are owned by same Russell
Eberhart Address Middlebourne
 Drilling commenced 1907
 Drilling completed 1907
 Date Shot 11-7-07 From To
 With
 Open Flow /10ths Water in. Inch
 /10ths Merc. in. Inch
 Volume. Cu. Ft.
 Rock Pressure lbs. hrs.
 Oil bbls., 1st 24 hrs.
 Fresh water feet feet
 Salt water feet feet

Casing and Tubing	Used in Drilling	Left in Well	Packers
Size			
16.			Kind of Packer
13.			
10.			Size of
6 1/2.	1540	1540	Depth set
5 3/16.	1659	1659	
3.			Perf. top
2.			Perf. bottom
Liners Used			Perf. top
			Perf. bottom

CASING CEMENTED. SIZE. No. Ft. Date
 COAL WAS ENCOUNTERED AT FEET INCHES
 FEET INCHES FEET INCHES
 FEET INCHES FEET INCHES

Formation	Color	Hard or Soft	Top	Bottom	Oil, Gas or Water	Depth Found	Remarks
1st Cow Run sand			775	790			
2nd Cow Run sand			875	905			
1st Salt Sand			990	1140			
2nd Salt Sand			1250	1510			
Maron sand			1530	1555			
Big Line			1590	1650			
Keener sand			1650	1687			
Big Injun			1687	1757			
Oil		at 1724	1724	1734			
		Total depth		1757.			

The above is the record furnished to us by the South Penn Natural Gas Company, from whom we purchased the well.



Formation	Color	Hard or Soft	Top	Bottom	Oil, Gas or Water	Depth Found	Remarks

Date _____, 194_____

APPROVED _____, Owner

By E R Purzel
 (Title)