

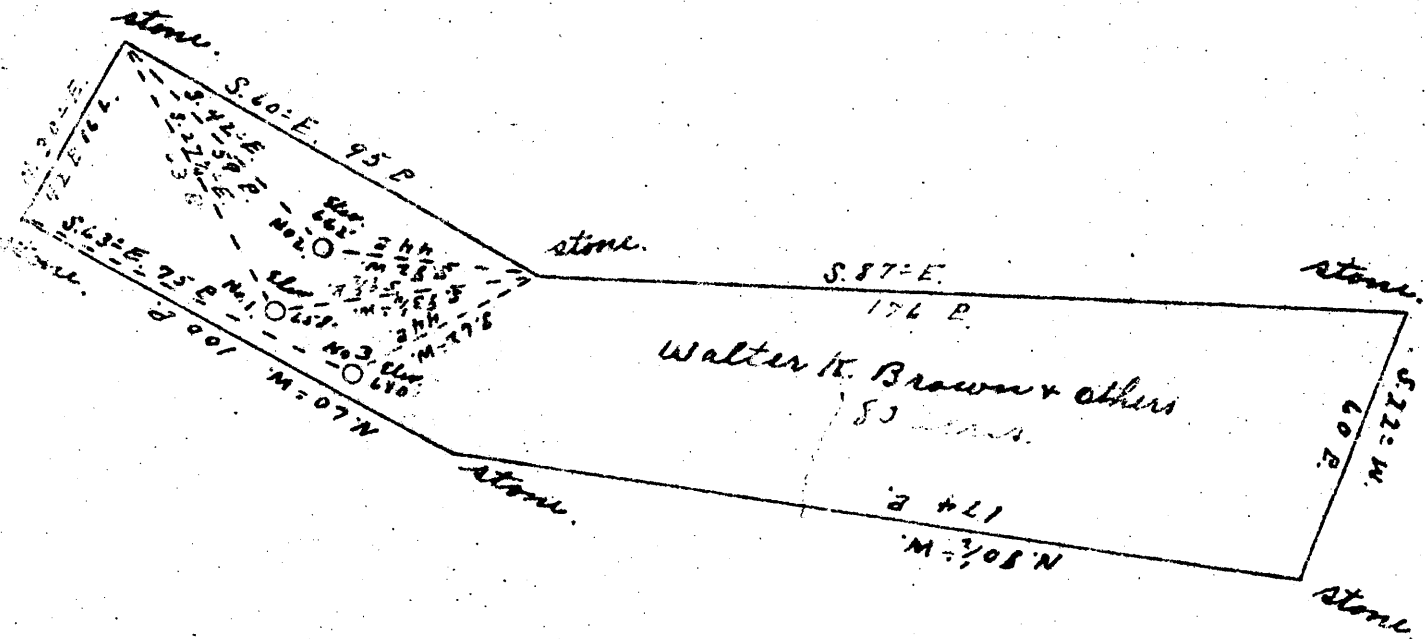
0.39 W  
1.36 S

0.44 W  
1.44 S

0.30 W  
1.43 S

J. Sellers

Longitude 78



O.T. Smith

Oli Haught

# 1	0.43 W 1.47 S
# 2	0.4 W 1.39 S
# 3	0.3 W 1.4 S

New Location   
 Drill Deeper   
 Abandonment

JAN 13 1947

1947?

Company Sugarcamp Oil Co.  
 Address New Matamoras Ohio  
 Farm Walter H. Brown & others  
 Tract \_\_\_\_\_ Acres 80 Lease No. \_\_\_\_\_  
 Well (Farm) No. 1, 2, & 3 Serial No. \_\_\_\_\_  
 Elevation (Spirit Level) No. 1, 658' No. 2, 662' No. 3, 660'  
 Quadrangle St. Marys W.Va.  
 County Tyler District Union  
 Engineer Jno Triplett  
 Engineer's Registration No. \_\_\_\_\_  
 File No. \_\_\_\_\_ Drawing No. \_\_\_\_\_  
 Date Oct. 28, 1946 Scale 1" = 40 P.

STATE OF WEST VIRGINIA  
 DEPARTMENT OF MINES  
 OIL AND GAS DIVISION  
 CHARLESTON

WELL LOCATION MAP  
 FILE NO. TYL-410-A; #1

TYL-411-A; #2 - TYL-412-A; #3  
 Denotes location of well on United States Topographic Maps, scale 1 to 62,500, latitude and longitude lines being represented by border lines, as shown.

— Denotes one inch spaces on border line of original tracing.